

# Error Correction and Adaptation in Conversational AI: A Review of Techniques and Applications in Chatbots

Saadat Izadi and Mohamad Forouzanfar \*

Department of Systems Engineering, École de Technologie Supérieure, Université du Québec, Montreal, QC H3C 1K3, Canada; saadat.izadi.1@ens.etsmtl.ca

\* Correspondence: mohamad.forouzanfar@etsmtl.ca

**Abstract:** This study explores the progress of chatbot technology, focusing on the aspect of error correction to enhance these smart conversational tools. Chatbots, powered by artificial intelligence (AI), are increasingly prevalent across industries such as customer service, healthcare, e-commerce, and education. Despite their use and increasing complexity, chatbots are prone to errors like misunderstandings, inappropriate responses, and factual inaccuracies. These issues can have an impact on user satisfaction and trust. This research provides an overview of chatbots, conducts an analysis of errors they encounter, and examines different approaches to rectifying these errors. These approaches include using data-driven feedback loops, involving humans in the learning process, and adjusting through learning methods like reinforcement learning, supervised learning, unsupervised learning, semi-supervised learning, and meta-learning. Through real life examples and case studies in different fields, we explore how these strategies are implemented. Looking ahead, we explore the different challenges faced by AI-powered chatbots, including ethical considerations and biases during implementation. Furthermore, we explore the transformative potential of new technological advancements, such as explainable AI models, autonomous content generation algorithms (e.g., generative adversarial networks), and quantum computing to enhance chatbot training. Our research provides information for developers and researchers looking to improve chatbot capabilities, which can be applied in service and support industries to effectively address user requirements.

**Citation:** Izadi, S.; Forouzanfar, M. Error Correction and Adaptation in Conversational AI: A Review of Techniques and Applications in Chatbots. *AI* **2024**, *5*, 803–841. <https://doi.org/10.3390/ai5020041>

Academic Editor: Gianni D'Angelo

Received: 8 April 2024

Revised: 17 May 2024

Accepted: 28 May 2024

Published: 4 June 2024



**Copyright:** © 2024 by the authors. Licensee MDPI, Basel, Switzerland. This article is an open access article distributed under the terms and conditions of the Creative Commons Attribution (CC BY) license (<https://creativecommons.org/licenses/by/4.0/>).

**Keywords:** artificial intelligence (AI); chatbot training; error correction; conversational AI; natural language processing (NLP); reinforcement learning (RL)

## 1. Introduction

Chatbots are being increasingly integrated into various aspects of modern life and are revolutionizing the way individuals and businesses interact and operate [1]. Fundamentally, chatbots are software applications designed to simulate human conversation. They enable interaction with users through text or voice commands. The evolution of chatbots has been driven by recent developments in artificial intelligence (AI) techniques such as natural language processing (NLP) that allow them to understand, interpret, and respond to human language more accurately [2]. This has led to chatbots that can be available 24/7, have fast response times, are scalable to huge amounts of data, are cost-effective, and are multilingual [3].

Chatbots serve a multitude of purposes in different sectors. In customer service, they reduce wait times and improve customer satisfaction by providing instant support, handling routine inquiries, and resolving common issues [4]. In e-commerce platforms, chatbots offer personalized shopping experiences and offer product recommendations and assistance based on user preferences and browsing history [5]. In the healthcare sector, they enhance patient engagement and healthcare accessibility by helping in

symptom assessment, appointment scheduling, and providing health tips [6]. In education, they assist in tutoring, language learning, and administrative tasks, making educational resources more accessible and interactive [7]. Moreover, chatbots play an important role in streamlining internal business processes. They assist in automating repetitive tasks such as data entry and scheduling, thereby increasing productivity and allowing human employees to focus on more complex and creative tasks.

As chatbots gather valuable data through interactions, they can offer insights into customer behavior and preferences, which can be used to inform business strategies [8,9]. Chatbots like IBM Watson Assistant have transformed customer support and engagement. On messaging platforms, the WhatsApp Business API has enabled seamless communication between businesses and customers. Meanwhile, cutting-edge AI models like ChatGPT from OpenAI have redefined the boundaries of text-based conversations [10].

However, the rise of chatbots also brings challenges, particularly concerning privacy and data security, as they often handle sensitive user information [11]. As chatbot technology continues to evolve, addressing these challenges in conversational AI remains crucial.

### *1.1. The Importance of Error Correction in ML*

Error correction is an important component of chatbots that shapes their efficacy and reliability. This includes enhancing the chatbot's learning capabilities, adaptability, and accuracy. ML models, trained on extensive datasets, are designed to identify patterns, make decisions, and predict outcomes. Despite their sophistication, these models are prone to errors due to factors such as biases in training data, overfitting, underfitting, or the complexity of tasks [12,13]. Error correction involves identifying these inaccuracies and refining the model for improved functionality. In the context of chatbots, inaccurate models not only impact performance but also pose the risk of a loss of credibility, particularly in critical sectors like healthcare and finance where errors can have grave consequences [14].

Error correction is essential for addressing biases in ML models. Biases, often ingrained in the training data, can lead to skewed outcomes, exacerbating existing societal prejudices [15]. Techniques like data augmentation, re-weighting, and adversarial training can help identify and mitigate biases within models [16]. Error correction also plays a crucial role in enhancing a model's ability to generalize from training data to new, unseen data [13]. As models are deployed, they encounter novel data and scenarios, often diverging from their initial training environments [17]. Generalization ensures the model's robustness and versatility in diverse real-world scenarios, especially in dynamic environments where adaptability to new data types and conditions is necessary [18]. This is especially important in real-time analytics and decision-making [19]. By incorporating user feedback and new data, chatbots can continuously learn and improve their performance over time [20].

### *1.2. Article Contributions and Overview*

In this article, we explore the evolving world of chatbots, exploring their capabilities, challenges, and the crucial role of error correction in shaping their evolution. Our work provides a comprehensive exploration into training chatbots to learn from their mistakes. It starts with an overview of chatbot technology, highlighting its evolution and current significance (Section 2). The focus then shifts to identifying common chatbot errors, which forms the basis for understanding their learning requirements (Section 3). A significant portion is dedicated to the importance of error correction in ML, emphasizing its role in enhancing chatbot accuracy and efficiency (Section 4). The article also outlines various strategies employed for chatbot improvement, including advanced techniques like feedback loops and reinforcement learning (RL) (Section 5). Incorporating real-world case studies, this article demonstrates the practical application and success of these methods

(Section 6). Furthermore, it discusses the challenges and ethical considerations in chatbot training (Section 7). The article concludes with insights into future trends in chatbot development and offers a perspective on the ongoing evolution in this field (Sections 8 and 9).

While previous research has addressed individual aspects of chatbot error correction, our work offers a unique contribution by providing a holistic and systematic analysis of the issue. We go beyond simply identifying common chatbot errors; we delve into their root causes. We also examine the broader impact of these errors on user experience and trust, highlighting the importance of error mitigation for the successful adoption and long-term viability of chatbots. Additionally, we offer a comprehensive review of error correction techniques, including both established methods and emerging approaches like reinforcement learning, and showcase their real-world applications through diverse case studies. This holistic approach distinguishes our work from the existing literature, which often focuses on specific error types or correction techniques in isolation.

## 2. Understanding Chatbots

Chatbots, also known as conversational agents, are software applications designed to simulate human-like conversation using text or voice interactions [21]. They function by recognizing user input, such as specific keywords or phrases, and responding based on a set of predefined rules or through more advanced AI techniques.

At their core, chatbots are programmed to mimic the conversational abilities of humans. Early versions of chatbots were rule-based and could only respond to specific commands. These have evolved into more advanced AI-driven chatbots that use NLP and ML to understand, interpret, and respond to user queries in a more natural and context-aware manner [22].

The key to a chatbot's functionality lies in its ability to process and analyze language. Rule-based chatbots rely on a database of responses and pick one based on the closest matching command from the user. In contrast, AI-powered chatbots use NLP to parse and understand the user's language, intent, and sentiment, enabling them to provide more relevant and personalized responses [23,24]. Chatbots are typically used in customer service to provide quick and automated responses to common inquiries and ease the workload of human staff [25]. They are also employed in various other domains, such as e-commerce for personalized shopping assistance, in healthcare for preliminary diagnosis and appointment scheduling, and in entertainment as interactive characters.

As technology advances, chatbots are becoming more capable of handling complex conversations, learning from past interactions, and providing more accurate and human-like responses. This evolution is transforming how businesses and customers interact, making chatbots an integral part of the modern digital experience.

### 2.1. Types of Chatbots: Rule-Based vs. AI-Based

Chatbots can generally be categorized into two primary types: rule-based and AI-based, each with unique functionalities and applications.

#### 2.1.1. Rule-Based Chatbots

These chatbots operate on predefined rules and a set of scripted responses. They are designed to handle queries based on specific conditions and triggers. Rule-based chatbots can efficiently manage straightforward, routine tasks by recognizing keywords or phrases in user inputs and responding with pre-programmed answers [26]. The key advantage of these chatbots lies in their simplicity and reliability in executing well-defined tasks. However, their major limitation is their lack of flexibility and inability to handle queries that fall outside their programmed rules. They cannot learn from interactions or improve over time, which makes them less adaptable to varying user needs [27].

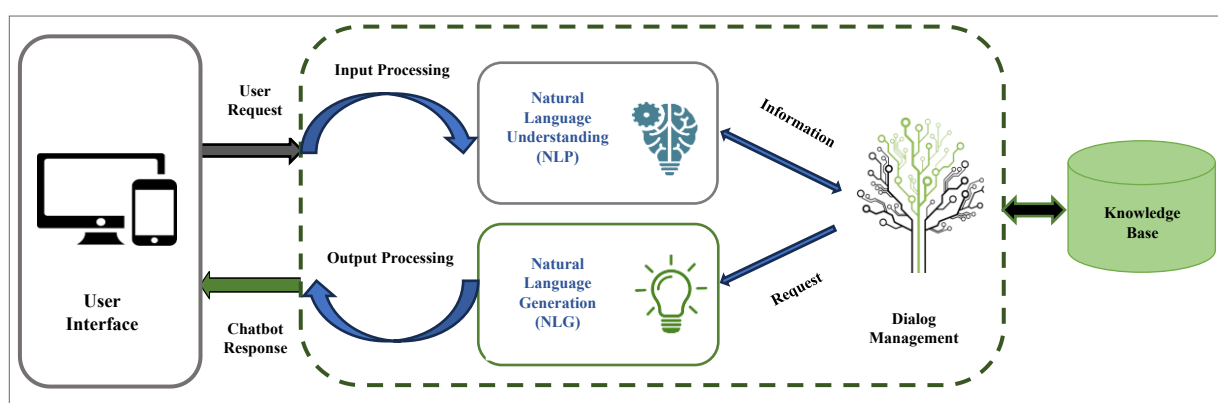
An example of a rule-based chatbot is the “APU Admin Bot”, designed to handle student inquiries, leveraging a Waterfall model development process and informed by interviews and questionnaires [28]. To build this chatbot, the developers gathered student needs through interviews and questionnaires. Analyzing these data, they created a flowchart outlining conversation paths. This flowchart was then used to design the chatbot’s logic on a platform like Chatfuel. Students can interact with the bot by following prompts or searching keywords to access pre-determined information. The chatbot provides easy access to information and improves administrative efficiency. Despite its success, its limitations include no backend updates and a lack of personalized responses.

In an approach aiming to promote self-reflection and proactive mental health, Miura et al. presented a rule-based chatbot system designed to monitor the mental well-being of elderly individuals [29]. Through the LINE messaging platform, the chatbot delivers daily inquiries tailored to assess the mental state of users. These inquiries, designed with simplicity in mind, prompt users to respond with yes or no answers, enabling easy expression of thoughts and emotions. Based on user responses, the chatbot adjusts its inquiries and provides weekly feedback and self-care advice, utilizing rules to identify areas of concern.

### 2.1.2. AI-Based Chatbots

AI-based chatbots provide a dynamic approach to automated interaction by leveraging advanced AI technologies like NLP, ML, and occasionally deep learning. These chatbots are intricately designed to grasp the context and intent of user queries, enabling conversational exchanges far beyond the capabilities of their rule-based counterparts [30].

Figure 1 illustrates the general architecture of an AI-based chatbot. User Interface (UI) is at the forefront of this architecture, which should offer users a smooth and intuitive means to communicate. Input Processing acts as the initial gatekeeper that parses user inputs and prepares them for deeper analysis. To understand user intent, AI-based chatbots use a natural language understanding (NLU) component. This unit analyzes the complexities of language and extracts key intents and entities from the dialogue. This analysis is then channeled into the dialogue management system, the chatbot’s decision-making core, which determines the most relevant response based on the conversation context, the chatbot’s accumulated knowledge, and previous interactions.



**Figure 1.** The architecture of an AI-based chatbot.

The chosen response is carefully constructed by the natural language generation (NLG) component, which translates the chatbot’s decision into a coherent and contextually appropriate message. This message undergoes final refinements in the Output Processing stage before being presented to the user via the UI. The chatbot relies on a knowledge base/database containing factual data and conversational patterns to inform its responses.

One of the most transformative features of AI-based chatbots is their learning component. This module allows for continuous improvement and personalization by integrating feedback and new data into the chatbot's operational framework. This learning adaptability of AI chatbots positions them as invaluable assets in fields requiring deep interaction and engagement. However, the sophistication of their design and the necessity for continuous training introduce challenges including the need for large datasets and powerful computing systems [31].

Al-Sharafi et al. investigated factors influencing the sustainable use of AI-based chatbots for educational purposes [32]. They built a theoretical model combining Expectation Confirmation Model (ECM) constructs (expectation confirmation, perceived usefulness, and satisfaction) with knowledge management (KM) factors (knowledge sharing, acquisition, and application). Data were collected from 448 university students who utilized chatbots for learning. Importantly, the study employed a novel hybrid Structural Equation Modeling–Artificial Neural Network (SEM-ANN) approach for analysis. The results emphasized the significance of knowledge application on chatbot sustainability, followed by perceived usefulness, acquisition, satisfaction, and sharing.

A recent study presented a legal counseling chatbot system enhanced by AI [33]. The system addresses the challenge of users locating pertinent legal information without specialized domain knowledge. It employs a slot-filling approach, prompting users to provide structured details about their legal inquiries such as the relevant legal domain and key terms. AI-powered NLP analyzes these structured data, enabling the system to understand the user's intent more accurately than traditional rule-based searches. To provide tailored responses, the system leverages a deep learning algorithm trained on a substantial database of legal questions and answers. This algorithm analyzes the user's structured query, identifies similar cases within the database, and extracts relevant information. Importantly, the system promotes continuous improvement through user feedback mechanisms. As users interact with the chatbot and assess the helpfulness of provided answers, the AI model can incorporate this feedback, refining the accuracy and relevance of its responses over time.

Rule-based chatbots are suitable for tasks requiring straightforward, consistent responses, while AI-based chatbots excel in scenarios that demand more complex, context-aware, and personalized interactions [34].

## 2.2. Common Applications of Chatbots

Chatbots have become integral across multiple sectors, significantly enhancing user experience and operational efficiency. In customer service, they offer instant support across digital platforms, efficiently handling inquiries and improving satisfaction [35]. The e-commerce sector sees chatbots personalizing shopping experiences, aiding in product discovery, and facilitating transactions, which potentially boosts sales [36,37]. Healthcare chatbots streamline patient interactions, from symptom checking to appointment scheduling, thereby increasing accessibility and efficiency in medical services [38]. In banking and finance, they provide secure, immediate assistance for account inquiries and transactions, revolutionizing customer service [39]. Educationally, chatbots support learning and administrative tasks, offering personalized tutoring and managing routine inquiries, enhancing the educational experience [40]. HR chatbots automate onboarding and recruitment processes, improving efficiency and candidate engagement [41]. In travel and hospitality, they simplify booking processes and customer support, enhancing travel experiences [42]. The legal field is no exception, with AI-powered chatbots emerging as valuable tools to bridge the gap between legal knowledge and user access [33]. Lastly, in entertainment and media, chatbots curate personalized content and engage users in interactive experiences, enriching media consumption [43,44]. Despite their widespread application, challenges in deployment and meeting user expectations underscore the importance of continuous improvement in chatbot technologies.

### 3. The Nature of Mistakes in Chatbots

As chatbots become increasingly integrated into various aspects of life, understanding the nature of their mistakes is crucial [45]. Like any technology based on AI, chatbots are prone to errors that can range from minor misunderstandings to significant miscommunications. These errors, while often technical in nature, can have far-reaching implications on user experience and trust [46]. This section explores the types of errors commonly encountered in chatbot interactions and examines the impact of these errors on users' perceptions and trust.

Table 1 provides a concise summary of these common errors with descriptions and examples for clarity.

**Table 1.** Types of chatbot errors and examples.

Error Type	Description	Examples
<b>Misunderstanding</b>	Errors where the chatbot fails to grasp the user's intent due to ambiguity in language, slang, or complex queries.	A user asks for "bank holidays," and the chatbot responds with information on holiday loans instead of actual dates.
<b>Inappropriate Response</b>	Situations where the chatbot's reply is out of context, offensive, or irrelevant. These can result from flawed training data or poor language understanding.	A chatbot, designed for customer support, uses casual language in a serious complaint scenario, worsening the issue.
<b>Factual Inaccuracy</b>	Occurs when a chatbot provides outdated, incorrect, or misleading information. Often a result of not updating the knowledge base regularly.	A health advice chatbot gives outdated dietary recommendations that have been debunked by recent studies.
<b>Repetitive Responses</b>	Chatbots may get stuck in a loop, providing the same response to varied inputs due to limited understanding or options.	A customer service chatbot repeats, "Can you rephrase that?" regardless of how the user alters their question.
<b>Lack of Personalization</b>	Fails to tailor responses to the individual user's context or history, resulting in a generic interaction that might not be helpful.	A chatbot treats a returning customer as a new user every time, asking repeatedly for the same basic information.
<b>Language Limitations</b>	Difficulty in processing and understanding multilingual inputs, dialects, or idiomatic expressions, leading to errors in response.	A chatbot fails to understand a common regional slang term, responding with unrelated information.
<b>Hallucinations</b>	AI model fills in gaps in its knowledge with fabricated information.	A chatbot, when asked about a recent scientific breakthrough, confidently describes a new drug that cures a major disease, even though such a drug does not exist and the breakthrough was not in that field.

#### 3.1. Types of Errors in Chatbot Responses

**Misunderstanding.** One of the most common errors in chatbot interactions is the misunderstanding of user intent [47]. This can occur due to various factors, such as the complexity of language, use of slang, typos, or ambiguous queries. When a chatbot fails to correctly interpret the user's request, it may provide irrelevant or off-target responses, leading to frustration and inefficiency.

Research has shown that dialog act classification can be a useful tool in helping chatbots better discern user intent and reduce misunderstandings [48]. The complexities of natural language understanding and generation often contribute to misunderstandings, as highlighted in studies on language model performance [49].

**Inappropriate responses.** Chatbots may sometimes generate responses that are inappropriate or offensive [50]. These instances usually stem from limitations in the

chatbot's programming or issues in the training data. Inappropriate responses can be particularly damaging, as they might offend users or reflect poorly on the brand or organization the chatbot represents.

Ethical considerations in the design of dialogue systems, including strategies to mitigate inappropriate responses, have been a focus of recent research [51]. In addition, the issue of "toxic degeneration" in language models, where they generate harmful or biased outputs, is a growing concern that can lead to inappropriate chatbot responses [52].

**Factual errors.** Chatbots providing informational or advisory services may occasionally give incorrect or outdated information [45]. This frequently results from a lack of updates to the chatbot's knowledge base or errors within its source data. Factual inaccuracies carry the risk of misleading users and could have harmful consequences in critical applications like healthcare or finance.

Leveraging knowledge bases like Wikipedia and semantic interpretation techniques can improve the accuracy of natural language processing systems and reduce factual errors in chatbots [53]. The development of web-scale knowledge fusion techniques, such as those employed in the Knowledge Vault project, offers a promising avenue for creating more accurate and up-to-date knowledge bases for chatbot information retrieval [54].

**Repetitive responses.** Chatbots with limited response generation capabilities might become stuck in a repetitive loop, offering the same responses over and over again, regardless of the user's input. This indicates a lack of flexibility and can quickly make the interaction feel stale and frustrating for the user. For example, a chatbot that continuously repeats "I'm sorry, I don't understand" shows that it is unable to adapt its responses.

Research into diversity-promoting objective functions and neural conversation models has explored ways to enhance the diversity and adaptability of chatbot responses, reducing repetitiveness [55,56].

**Lack of personalization.** Many chatbots fail to tailor their interactions to individual users. This means they provide generic, one-size-fits-all responses that do not consider the user's specific needs, preferences, or interaction history. This lack of personalization can make the chatbot feel robotic and impersonal, leading to a less engaging user experience. For example, if a chatbot does not remember a user's previous purchase or issue, it will not be able to offer a helpful, contextually relevant solution.

Recent advancements in personalized dialogue generation have focused on incorporating user traits and controllable induction to create more tailored and engaging interactions [57,58].

**Language limitations.** Chatbots often have limitations in their language understanding and generation abilities. They might be primarily designed to function in a single language, unable to handle multilingual conversations smoothly. Additionally, they may struggle with nuanced language, misinterpreting sarcasm, humor, or figurative speech. This can lead to misunderstandings and hinder the chatbot's ability to communicate effectively.

Multilingual neural machine translation systems, like those developed by Google, have the potential to greatly expand the language capabilities of chatbots and enable seamless cross-lingual communication [59]. Cross-lingual information retrieval models based on multilingual sentence representations, such as those utilizing BERT, can help chatbots better understand and respond to queries in diverse languages [60].

**Hallucinations.** In the context of AI and chatbots, hallucinations refer to instances where the AI generates outputs that are factually incorrect, nonsensical, or unrelated to the given input [61,62]. This is often due to the model trying to fill in gaps in its knowledge with fabricated information, rather than admitting its limitations.

Research on faithfulness and factuality in abstractive summarization highlights the challenges of ensuring the accuracy and relevance of generated text, which directly relates to the issue of hallucinations in chatbots [63]. The growing body of work surveying hallucination in natural language generation provides valuable insights into the causes and potential solutions for this phenomenon [64].

### *3.2. Impact of Chatbot Errors on User Experience and Trust*

The impact of chatbot errors on user experience is multifaceted [26,65,66]. When chatbots fail to understand user intent, provide inappropriate responses, or deliver inaccurate information, users experience frustration and dissatisfaction [67]. This directly affects their perception of the chatbot's efficiency and usefulness, potentially discouraging them from further interaction. In scenarios where users rely on the chatbot for critical information, such as in healthcare or financial advice, factual errors can have severe consequences, leading to misinformation and misguided decisions.

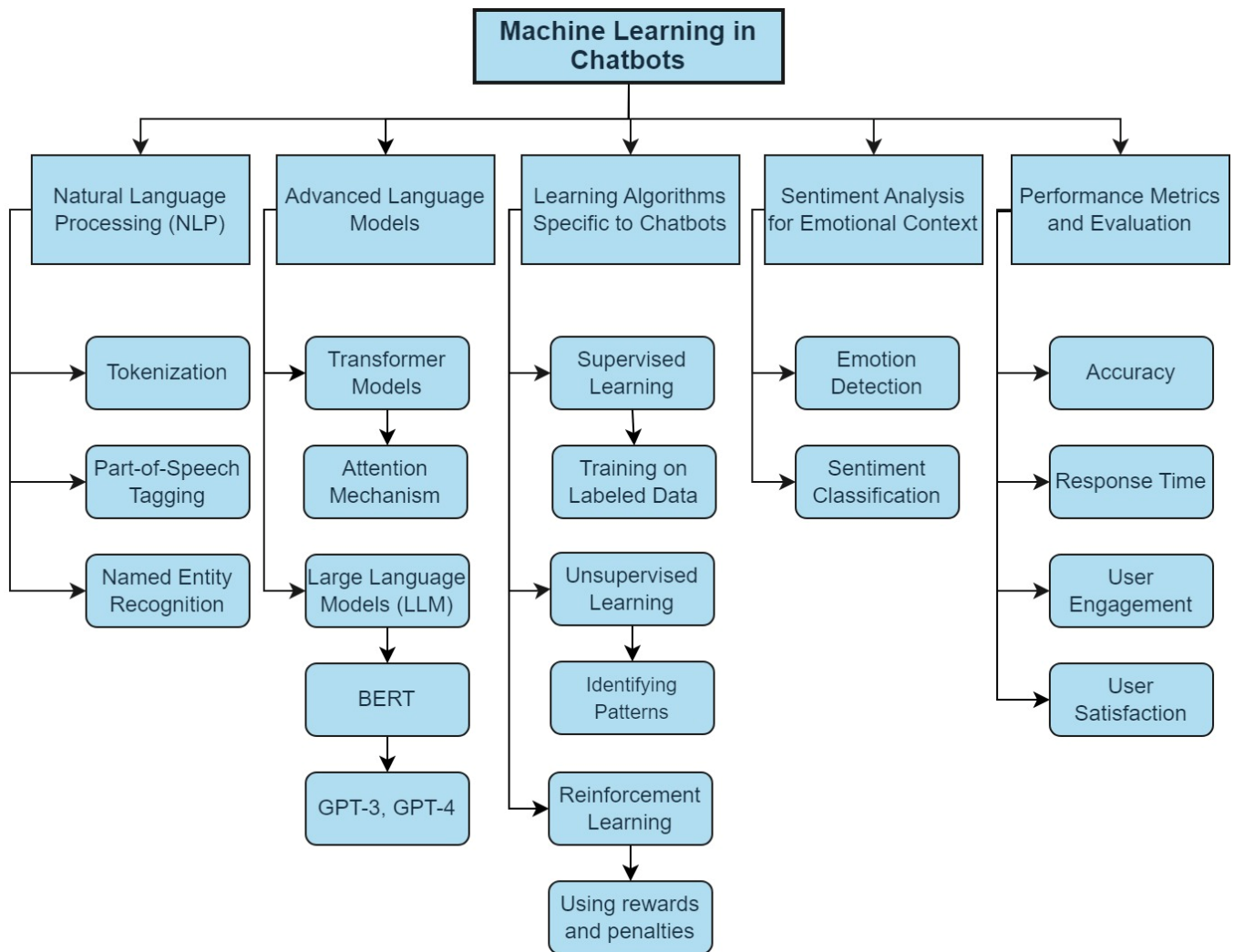
Beyond immediate frustration, errors significantly erode user trust in the chatbot and the organization it represents [68]. Trust is a cornerstone of successful human-computer interactions, especially when sensitive information or important decisions are involved [26,69]. Errors, particularly those related to factual accuracy or social appropriateness, undermine the chatbot's credibility and raise doubts about its reliability. This loss of trust is not easily repaired and can have lasting repercussions on user engagement and loyalty [44,70]. Users may become hesitant to share information, reluctant to follow advice, or simply choose to avoid the chatbot altogether. In essence, errors create a ripple effect, impacting not only the current interaction but also the long-term relationship between the user and the chatbot system.

Addressing these errors requires a multi-pronged approach. Developers must prioritize error identification and correction, utilizing robust error-handling mechanisms and transparent communication about the chatbot's limitations. Continuous learning and improvement are essential, ensuring the chatbot adapts and evolves to better meet user needs and expectations. By proactively addressing errors and building a foundation of trust, chatbot developers can create more satisfying, reliable, and valuable user experiences.

## **4. Foundations of ML for Chatbots**

ML is at the heart of modern chatbot technology. It equips chatbots with the ability to interpret, learn from, and respond to human language [71]. This section offers an overview of the key ML concepts that are instrumental in the development and operation of chatbots. Figure 2 shows an overview of these key ML concepts in chatbots.





**Figure 2.** Overview of key machine learning concepts in chatbots.

#### 4.1. Key ML Concepts in Chatbots

##### 4.1.1. Natural Language Processing (NLP)

NLP is vital in enabling chatbots to understand and interpret user queries contextually. This involves parsing user input, discerning intent, and generating appropriate responses. Advanced NLP techniques, such as tokenization, part-of-speech tagging, and named entity recognition, are employed to analyze, understand, and interpret human language [72].

Modern chatbots often utilize sophisticated language models like BERT (Bidirectional Encoder Representations from Transformers) or GPT (Generative Pre-trained Transformer) models [73]. GPT models are generative and are trained to predict the next word in a sequence, making them excellent for tasks like text generation and conversational AI. BERT models, on the other hand, are designed to understand the deep contextual relationships between words in a sentence. This bidirectional training makes BERT models ideal for tasks like question answering, sentiment analysis, and natural language understanding [74,75].

##### 4.1.2. Learning Algorithms Specific to Chatbots

Data-driven learning is a fundamental concept in the development of chatbots, crucial for enhancing their effectiveness and adaptability [76]. At its core, data-driven learning involves the systematic analysis of vast amounts of data to enable chatbots to

improve their conversational abilities over time. By leveraging diverse and comprehensive datasets, chatbots can better understand user intents, preferences, and behaviors, allowing them to generate more accurate and contextually relevant responses [77].

**Supervised vs. unsupervised learning.** In the context of chatbots, supervised learning is predominant. Here, chatbots are trained on labeled datasets comprising user queries and corresponding correct responses, allowing them to learn contextually appropriate reactions. Unsupervised learning, while less common, can be used to identify patterns or anomalies in user interactions, aiding in the chatbot's adaptive learning process [78].

For example, Wang et al. [79] proposed a chatbot to observe and evaluate the psychological condition of women during the perinatal period. They employed supervised machine learning techniques to analyze 31 distinct attributes of 223 samples. The objective was to train a model that can accurately determine the levels of anxiety, depression, and hypomania in perinatal women. Meanwhile, psychological test scales were used to assist in evaluations and make treatment suggestions to help users improve their mental health. The trained model demonstrated high reliability in identifying anxiety and depression, with initial reliability rates of 86% and 89%, respectively. Notably, over time, through long-term feedback and simulations, the model's diagnostic and recommendation accuracies improved. Specifically, after three weeks, the accuracy for anxiety diagnosis and recommendations reached 93%, and for depression, it reached 91% across five simulations.

**RL in conversations.** This learning paradigm involves training chatbots to make sequences of decisions. By using a system of rewards and penalties, chatbots learn to optimize their responses based on user feedback, gradually improving their conversational abilities and decision-making processes [80]. For instance, Jadhav et al. [81] introduced a new method for creating a chatbot system using ML for the academic and industrial sectors. The system facilitates human-machine discussions, identifies sentences, and responds to queries. It uses NLP and reinforcement learning algorithms, focusing on experience learning, improving connections, and constant information handling to maximize model accuracy and convergence rates.

A more detailed review of different learning algorithms aimed specifically at error correction in chatbots is provided in Section 5.

#### 4.1.3. Sentiment Analysis for Emotional Context

Chatbots equipped with sentiment analysis can gauge the emotional tone of user inputs [82]. By analyzing text for positive, negative, or neutral sentiments, chatbots can tailor their responses to match or appropriately respond to the user's emotional state, enhancing the overall interaction quality [83]. For example, Rifqi Majid et al. developed the Dinus Intelligent Assistant (DINA) chatbot to assist with student administration services, addressing the challenge of recognizing emotions in text-based conversations [84]. In their study, they preprocessed conversations using sentiment analysis and then collected data based on the conversations and the results of the sentiment analysis. Subsequently, they applied recurrent neural networks (RNNs) to categorize emotions based on current conversations. The outcome of this approach was promising, exhibiting a precision accuracy of 0.76. From these results, it was demonstrated that their algorithm could indeed help in recognizing emotions from text-based conversations.

#### 4.1.4. Large Language Models (LLMs)

Large Language Models (LLMs) have emerged as the cornerstone of modern AI-based chatbots [85]. These powerful language models, fueled by sophisticated architectures like transformer models, have revolutionized how chatbots understand and respond to human language.

Transformer models, introduced by Google in 2017, are a type of neural network architecture that has proven exceptionally effective for NLP tasks. Unlike traditional

recurrent neural networks (RNNs), transformers can process entire sentences in parallel, allowing for faster training and improved performance with long sequences of text.

The core mechanism within transformers is the “attention mechanism”. This allows the model to weigh the importance of different words in a sentence when predicting the next word. This attention mechanism is crucial for capturing contextual relationships between words and understanding the nuances of human language.

Two notable examples of LLMs that have garnered significant attention are GPT-3 and GPT-4, developed by OpenAI. These models, built upon the transformer architecture, have demonstrated impressive capabilities in a wide range of language tasks, including text generation, translation, summarization, and question answering. GPT-3, with its 175 billion parameters, marked a significant milestone in LLM development. Its successor, GPT-4, is expected to be even more powerful and capable, pushing the boundaries of what is possible with AI-based chatbots.

LLMs form the backbone of modern AI-based chatbots by enabling them to do the following:

- (1) Understand user input: LLMs analyze text input from users, deciphering the meaning, intent, and context behind their queries.
- (2) Generate human-like responses: LLMs can craft responses that mimic human conversation, making interactions feel more natural and engaging.
- (3) Adapt and learn: LLMs can continuously learn from new data and interactions, improving their performance and responsiveness over time.

By harnessing the power of LLMs, chatbot developers can create more intelligent, responsive, and helpful conversational agents that are capable of understanding and responding to a wide range of user queries.

#### 4.1.5. Performance Metrics and Evaluation

Performance metrics and evaluation are essential components in assessing the effectiveness of chatbots. These metrics, including accuracy, response time, user engagement rate, and satisfaction scores, provide valuable insights into how well a chatbot is performing in real-world scenarios. Accuracy measures the chatbot’s ability to provide correct responses, while response time reflects its efficiency in delivering those responses. The user engagement rate indicates the level of interaction and interest users have with the chatbot, while satisfaction scores gauge overall user satisfaction with the chatbot experience.

There is, however, a pressing need to standardize evaluation metrics for various chatbot applications, including healthcare. For instance, a 2020 study identified diverse technical metrics used to evaluate healthcare chatbots and suggested adopting more objective measures, such as conversation log analyses, and developing a framework for consistent evaluation [86].

#### 4.2. Learning from Interactions

Chatbots, particularly those powered by AI, have the remarkable ability to learn and evolve from user interactions [87]. This learning process involves various stages of data processing, analysis, and adaptation. Here we explore how chatbots learn from interactions:

**Data collection and analysis:** The initial step in the learning process is data collection. Every interaction a chatbot has with a user generates data. These data include the user’s input (questions, statements, and commands), the chatbot’s response, and any follow-up interaction. Over time, these data accumulate into a substantial repository. Chatbots analyze these collected data to identify patterns and trends. For instance, they can recognize which responses satisfactorily answered users’ queries and which led to further confusion or follow-up questions [88]. Additionally, analysis of user interactions

can reveal common pain points, enabling the chatbot to proactively address them in the future [89].

**Feedback incorporation:** User feedback, both implicit and explicit, is a critical component of the learning process. Explicit feedback can be in the form of user ratings or direct suggestions, while implicit feedback is derived from user behavior and interaction patterns. Chatbots use this feedback to adjust their algorithms. Positive feedback reinforces the responses or actions taken by the chatbot, while negative feedback prompts it to adjust its approach [90]. Reinforcement learning (RL) algorithms play a significant role in this adaptive process, allowing chatbots to learn from rewards and penalties associated with their actions [91].

**Training and model updating:** The core of a chatbot's learning process lies in training its ML models. Using gathered data and feedback, the chatbot's underlying ML model is periodically retrained to improve its accuracy and effectiveness [72]. During retraining, the model is exposed to new data points and variations, allowing it to learn from past mistakes and successes. This process can involve adjusting weights in neural networks, refining decision trees, or updating the parameters of statistical models to better align with user expectations and needs.

**Natural language understanding (NLU):** A significant aspect of a chatbot's learning process is enhancing its NLU [92]. This involves improving its ability to comprehend the context, tone, and intent behind user inputs. Through continuous interactions, the chatbot learns to parse complex sentences, understand colloquialisms, and recognize emotions or sentiments expressed by users. By leveraging NLU, chatbots can provide more accurate and contextually relevant responses, leading to improved user satisfaction [93].

**Personalization:** As chatbots interact with individual users over time, they start to personalize their responses. By recognizing patterns in a user's queries or preferences, the chatbot can tailor its responses to be more relevant and personal, enhancing user experience [94]. Personalization also involves adapting to the user's style of communication, which can include adjusting the complexity of language used, the formality of responses, or even the type of content presented [95].

**Continuous improvement and adaptation:** The learning process for chatbots is ongoing. They continually adapt to new trends in language use, changes in user behavior, and shifts in the topics or types of queries they encounter. This continuous improvement cycle ensures that chatbots remain effective over time, even as the environment in which they operate evolves [96].

In the next section, we will investigate these learning scenarios for error reduction in more detail.

## 5. Strategies for Error Correction

Error correction in chatbots is a critical process that ensures these AI-driven tools are efficient, accurate, and reliable. This section explores the various strategies employed to refine and enhance chatbot interactions, particularly focusing on how errors are identified and rectified. Three key approaches are explored as follows: data-driven methods utilizing feedback loops, algorithmic adjustments through reinforcement and supervised learning, and the incorporation of human oversight in the learning process. While these strategies can stand alone, in practice, the most effective chatbots use a combination of these approaches for the best results.

Figure 3 illustrates the general process of chatbot error correction, and Table 2 summarizes the different strategies that can be used for error correction with their benefits and challenges.

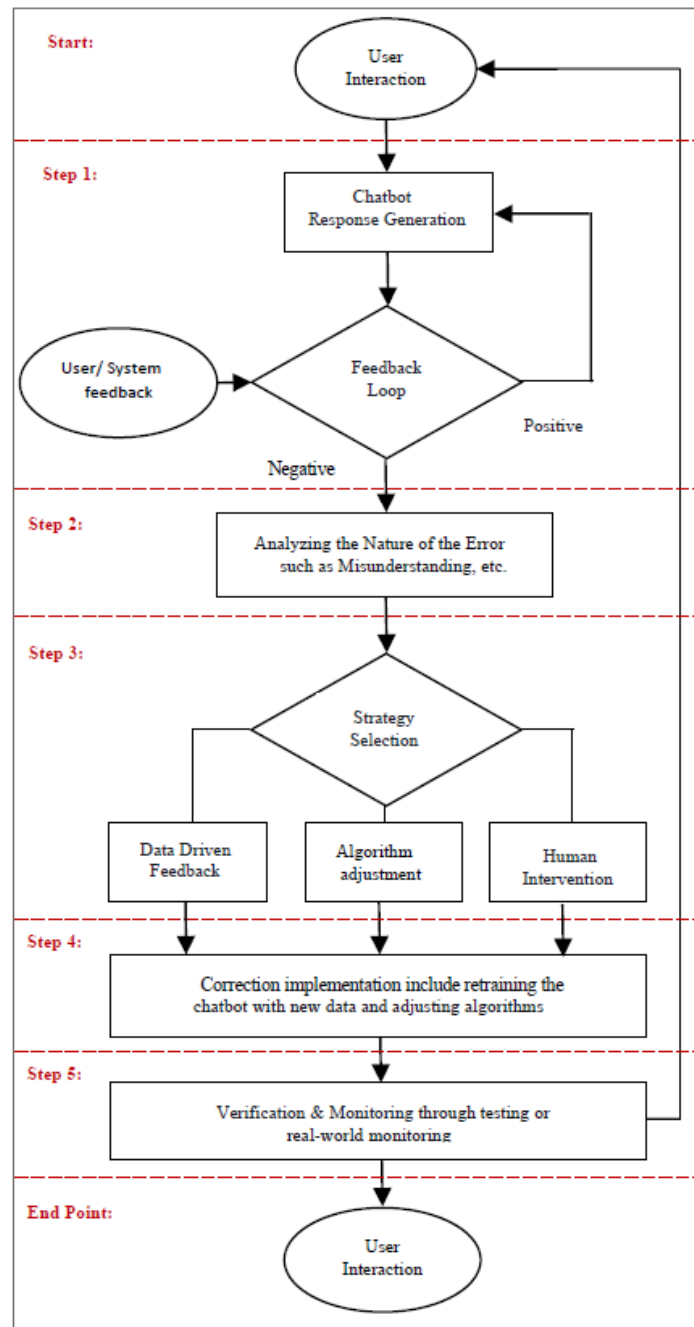


Figure 3. Flowchart of chatbot error correction process.

Table 2. Strategies for error correction in chatbots.

Strategy	Description	Benefits	Challenges
Data-Driven Approach	Collects and analyzes user feedback to pinpoint and correct errors.	Adapts to user needs, increases satisfaction, and can enable personalization.	Requires significant data collection and analysis; potential for bias in the feedback data.
Algorithmic Adjustments	Supervised learning: Trains on labeled data (input–output pairs) to learn patterns.	Reliable for well-defined tasks; straightforward to implement.	Requires large amounts of labeled data; may struggle with unseen scenarios.

	Reinforcement learning (RL): Learns by trial and error, receiving rewards or penalties for actions.	Optimizes responses based on feedback; adapts to evolving situations.	Complex to design reward systems; can be computationally expensive.
	Semi-supervised learning: Leverages both labeled and unlabeled data.	Improves performance when labeled data are scarce.	Requires careful data balancing; unlabeled data can introduce noise.
	Weakly supervised learning: Uses noisy or incomplete labels for training.	Enables learning with less manual effort.	May not be as accurate as strong supervision methods.
	Few-shot/zero-shot learning: Adapts to new tasks with minimal or no new labeled examples.	Efficient for rapidly expanding chatbot capabilities.	Performance heavily relies on pre-training quality; may struggle with complex tasks.
Human-in-the-Loop	Leverages human oversight during chatbot training and operation.	Increases accuracy, ensures ethical responses, and provides more nuanced understanding of user interactions.	Potential for slower response times; requires ongoing human resources.

### 5.1. Data-Driven Approach

Using feedback loops in a data-driven approach is a powerful strategy for error correction in chatbots [97,98]. Feedback loops are systems that collect responses and reactions from users and utilize this information to adjust and improve the chatbot. This allows for the continuous improvement of chatbot performance in dynamic conversational environments. This process works in the following manner:

**Collection of user feedback:** The collection of user feedback is a crucial step in the chatbot learning process. Chatbots gather feedback through various channels, including explicit mechanisms like direct ratings or textual comments on chatbot responses [99]. Additionally, implicit feedback is derived from analyzing user behavior, such as session duration, conversation abandonment rates, or even click-through patterns on suggested responses [98,100]. These diverse feedback mechanisms provide valuable insights into the effectiveness of the chatbot's responses and pinpoint areas where misunderstandings or errors occur [101]. By carefully analyzing these feedback data, developers can identify recurring issues, understand user preferences, and prioritize areas for improvement, thus driving the continuous enhancement of chatbot performance.

**Analysis of feedback data:** The collected data are analyzed to identify patterns and common issues. For instance, consistently low ratings or negative feedback on specific types of responses can indicate an area where the chatbot is struggling [102]. This analysis often involves looking at the chatbot's decision-making process, understanding why certain responses were chosen, and determining if they align with user expectations [103].

**Adapting and updating the chatbot:** Based on the analysis, the chatbot's response mechanisms are adapted [104,105]. This might involve updating the database of responses, changing the way the chatbot interprets certain queries, or modifying the algorithms that guide its decision-making process. In more advanced systems, this adaptation can be semi-automated, where the chatbot itself learns to make certain adjustments based on ongoing feedback [106].

**Testing and iteration:** After adjustments are made, the updated chatbot is tested, either in a controlled environment or directly in its operating context [107]. User interactions are closely monitored to assess the impact of the changes. This process is iterative. Continuous feedback is sought and analyzed, leading to further refinement [108].

**Enhancing personalization:** Feedback loops also aid in enhancing the personalization aspect of chatbots [109]. By understanding user preferences and common queries, chatbots can tailor their responses to be more personalized and context-specific, thereby improving user satisfaction [110].

## 5.2. Algorithmic Adjustments

Algorithmic adjustments, mainly through supervised reinforcement, are crucial in the error correction process of chatbots [81]. These techniques enable chatbots to learn from user interactions and feedback, adjust their decision-making algorithms, and progressively improve their ability to engage in accurate and contextually relevant conversations.

### 5.2.1. RL in Chatbots

RL involves training a chatbot through a system of rewards and penalties [111]. The chatbot is programmed to recognize certain actions or responses as positive (leading to a reward) or negative (resulting in a penalty). The objective is to develop a policy for the chatbot that maximizes the cumulative reward over time. This policy dictates the chatbot's responses based on the situation and past experiences [112].

**Application in chatbots.** In chatbots, RL can be used to fine-tune conversation flow and response accuracy. For instance, if a chatbot correctly interprets a user's request and provides a satisfactory response (as judged by user feedback or predefined criteria), it receives a reward. Conversely, inaccurate or inappropriate responses incur penalties. Over time, the RL algorithm adjusts the chatbot's responses to maximize rewards, thereby improving conversational accuracy and user satisfaction.

For instance, Jadhav et al. [81] investigated the use of RL to improve the responsiveness and adaptability of chatbots in academic settings. The proposed chatbot system integrates traditional NLP techniques for query understanding and response generation. Crucially, it employs an RL-based dialogue manager to optimize its interactions with users. The core of RL implementation is the Q-learning algorithm. This algorithm allows the chatbot to learn from experience by assigning rewards or penalties to its responses based on their perceived effectiveness. Over time, the chatbot prioritizes responses that consistently receive positive reinforcement. In another study, Liu et al. [113] proposed Goal-oriented Chatbots (GoChat), a framework for end-to-end training of chatbots to maximize long-term returns from offline multi-turn dialogue datasets. The framework uses hierarchical RL (HRL) to guide conversations toward the final goal, with a high-level policy determining sub-goals and a low-level policy fulfilling them. A recent paper proposed a novel framework for training dialogue agents using deep RL. The authors used an actor-critic architecture, where the actor generates responses and the critic evaluates their quality. They trained the model on a large dataset of human-human conversations and demonstrated that it can generate more engaging and natural dialogue than traditional rule-based or supervised learning methods [114]. Another recent work addressed a key challenge in DRL for dialogue: the need for a large amount of human feedback to train the reward function [115]. The authors proposed a way off-policy batch DRL algorithm that can learn from implicit human preferences, such as click-through rates or conversation length. They showed that this approach can significantly reduce the amount of human feedback required to train a high-performing dialogue agent.

**Challenges and considerations.** One of the challenges in applying RL to chatbots is defining appropriate reward mechanisms. The complexity of human language and the subjective nature of conversations make it difficult to quantify rewards and penalties accurately. Continuous monitoring and adjustment are often required to ensure that the RL system remains aligned with desired outcomes and does not develop biases or undesirable response patterns [116].

### 5.2.2. Supervised Learning in Chatbots

Supervised learning involves training a chatbot on a labeled dataset, where the input (user query) and the desired output (correct response) are provided. The chatbot uses this data to learn how to respond to various types of queries. This method is particularly

effective for training chatbots on specific tasks, such as customer support, where predictable and accurate responses are crucial [117].

The chatbot is exposed to a vast array of conversation scenarios during the training phase. The more diverse and comprehensive the training dataset, the better the chatbot becomes at handling different types of queries. The training process also involves fine-tuning the model parameters and structure to improve response accuracy and reduce errors like misunderstanding user intent or providing irrelevant responses [118].

Based on performance metrics (like accuracy, precision, and recall), the chatbot model is continually refined. New data, including more recent user interactions and feedback, are often incorporated into the training set to keep the chatbot updated with evolving language use and user expectations.

### 5.3. Overcoming Data and Label Scarcity

To further expand the chatbot capabilities, the use of new learning paradigms beyond traditional models is crucial. These techniques encompass semi-supervised and weakly supervised learning, as well as few-shot, zero-shot, and one-shot learning. These approaches address key challenges in chatbot development, such as data scarcity and the need for rapid adaptation to new tasks or domains.

#### 5.3.1. Semi-Supervised Learning

Semi-supervised learning stands as a hybrid model that merges the strengths of both supervised and unsupervised learning [119]. It utilizes a small amount of labeled data alongside a larger volume of unlabeled data. This blend is particularly advantageous for chatbots, as acquiring extensive, well-labeled conversational data can be resource-intensive. In this approach, the chatbot initially learns from the labeled data, gaining a basic understanding of language patterns and user intents. It then extrapolates this knowledge to the broader, unlabeled dataset, enhancing its comprehension and response capabilities.

For chatbots, semi-supervised learning can significantly expedite the training process. The chatbot can develop a preliminary model based on the limited labeled data and refine its understanding through exposure to the more extensive, unlabeled data [120]. This process is particularly effective for understanding the nuances of natural language, which is often too complex to be fully captured in a limited labeled dataset. The method is also beneficial in adapting to new slang, jargon, or evolving language trends, as the unlabeled data can provide a more current snapshot of language use.

For example, a recent study addressed the challenge of automating intent identification in e-commerce chatbots, crucial for enhancing the shopping experience by accurately answering a wide range of pre- and post-purchase user queries [121]. Recognizing the complexity added by code-mixed queries and grammatical inaccuracies from non-English speakers, the study proposed a semi-supervised learning strategy that combines a small, labeled dataset with a larger pool of unlabeled query data to train a transformer model. The approach included supervised MixUp data augmentation for the labeled data and label consistency with dropout noise for the unlabeled data. Testing various pre-trained transformer models, like BERT and sentence-BERT, the study showed significant performance gains over supervised learning baselines, even with limited labeled data. A version of this model has been successfully deployed in a production environment.

#### 5.3.2. Weakly Supervised Learning

**Training with imperfect labels.** Weakly supervised learning comes into play when the available training data are imperfectly labeled [122]. This might involve labels that are noisy, inaccurate, or too broad. In the context of chatbots, this means training the system with data where the annotations may not precisely match the desired output. Despite the



less-than-ideal nature of the training data, this approach can still yield valuable learning outcomes. It allows chatbots to be trained on a more diverse range of data, capturing a wider array of conversational styles and topics.

**Advantages in chatbot development.** One of the key benefits of weakly supervised learning is the ability to leverage larger datasets that might otherwise be unusable due to imperfect labeling. This can be particularly useful for developing chatbots designed to operate in specific niches or less common languages, where labeled data are scarce. Additionally, this approach can facilitate quicker iterations in the development cycle of chatbots [123]. It allows for rapid prototyping and testing of chatbot models, with the understanding that these initial models will be refined as more accurate data become available or as the chatbot itself helps to clean and label the data through user interactions.

For example, a study focused on enhancing chatbots for food delivery services tackled the challenge of understanding customer intent, especially when faced with incoherent English and code-mixed language (Hinglish) [122]. Recognizing the high cost of acquiring large volumes of high-quality labeled training data, the research explored weaker forms of supervision to generate training samples more economically, albeit with potential noise. The study addressed the complexity of conversations that could involve multiple messages with diverse intents and proposed the use of lightweight word embeddings and weak supervision techniques to accurately tag individual messages with relevant labels. Additionally, it found that simple augmentation techniques could notably improve the handling of code-mixed messages. Tested on an internal benchmark dataset, the proposed sampling method outperformed traditional random sampling, raw sample usage, and even Snorkel, a leading weak supervision framework, demonstrating a substantial improvement in the F1 score and illustrating the effectiveness of these strategies in a real-world application.

### 5.3.3. Few-Shot, Zero-Shot, and One-Shot Learning

Few-shot, zero-shot, and one-shot learning stand to revolutionize the training methodologies of chatbots. These paradigms are particularly adept at addressing the challenge of data scarcity and the need for chatbots to adapt to new domains or tasks with minimal examples.

Few-shot learning enables chatbots to grasp new concepts or intents from a very limited set of examples. This approach is instrumental in scenarios where collecting extensive labeled data is impractical, thus significantly speeding up the chatbot's ability to adapt to new user queries or languages [124].

Zero-shot learning takes this a step further by empowering chatbots to understand and respond to tasks or queries they have never encountered during training [125]. This paradigm leverages generalizable knowledge learned during training, applying it to entirely new contexts without the need for explicit examples. In the context of chatbots, this capability could be transformative, enabling them to provide relevant responses across a broader spectrum of topics without exhaustive domain-specific training.

One-shot learning, on the other hand, focuses on learning from a single example [126]. This method is especially beneficial for personalizing interactions or quickly incorporating user-specific preferences and contexts into the chatbot's response framework. By effectively learning from a single interaction, chatbots can offer more tailored and relevant responses, enhancing the user experience.

The integration of few-shot, zero-shot, and one-shot learning paradigms into chatbot training embodies a transformative approach to enhancing conversational AI's adaptability and intelligence. Implementing these paradigms necessitates the adoption of advanced algorithms that excel in abstracting learned knowledge and applying it to novel scenarios that the chatbot was not explicitly trained on. In the remaining part of this section, we explore in a deeper way how these advanced learning paradigms can be applied in the context of chatbot training.

**Leveraging meta-learning techniques:** Meta-learning, or learning to learn, stands at the forefront of enabling few-shot, zero-shot, and one-shot learning in chatbots [127]. By employing meta-learning algorithms, chatbots can generalize their learning from one task to another, facilitating rapid adaptation to new tasks or domains with minimal data. In practical terms, this means a chatbot trained in customer service could quickly adapt to provide support in a different language or domain, using only a few examples to guide the transition. Meta-learning achieves this by optimizing the model's internal learning process, allowing it to apply abstract concepts learned in one context to another vastly different one.

For example, a recent study introduced D-REPTILE as a meta-learning algorithm to refine dialogue state tracking across various domains by leveraging domain-specific tasks. This method involved selecting multiple domains, using them to iteratively adjust the initial model parameters, and thus creating a base model state optimized for quick adaptation to new, related domains [128]. D-REPTILE stood out for its operational simplicity and efficiency, enabling significant performance boosts in models trained on sparse data by preparing them for effective fine-tuning on target domains not seen during the initial training phase.

Another recent study adapted the model-agnostic meta-learning (MAML) approach for personalizing dialogue agents without relying on detailed persona descriptions [127]. Researchers trained the model on a variety of user dialogues, and then fine-tuned it to new personas with just a few samples from specific users. This process allowed the model to quickly adapt its responses to reflect the unique characteristics of each user's persona, demonstrated by improved fluency and consistency in conversations when evaluated against traditional methods.

**Embedding rich contextual and semantic understanding:** The core of effectively implementing these learning paradigms lies in infusing chatbots with a deep understanding of language semantics and context. Advanced NLP techniques, such as transformer models [129] and contextual embeddings [130], play a crucial role here. These models can capture the nuances of human language, including idioms, colloquialisms, and varying syntactic structures, making it possible for chatbots to understand and respond to queries accurately, even with minimal prior exposure to similar content. For instance, a chatbot could use one-shot learning to accurately interpret and respond to a user's unique request after seeing just one example of a similar query, thanks to its deep semantic understanding of the query's intent and context [131].

For example, a recent study introduced the context-aware self-attentive NLU (CASA-NLU) model, enhancing natural language understanding in dialog systems by incorporating a broader range of contextual signals, including prior intents, slots, dialog acts, and utterances [132]. Unlike traditional NLU systems that handle utterances in isolation and defer context management to dialogue management, the CASA-NLU model integrates these signals directly to improve intent classification and slot labeling. This approach led to a notable performance increase, with up to a 7% gain in intent classification accuracy on conversational datasets, and set a new state-of-the-art for the intent classification task on the Snips and ATIS datasets without relying on contextual data.

**Transfer learning:** Beyond meta-learning, transfer learning techniques can facilitate the application of few-shot, zero-shot, and one-shot learning by transferring knowledge from data-rich domains to those where data are scarce. Chatbots can leverage pre-trained models on extensive datasets and then fine-tune them with a small subset of domain-specific data [133,134]. This approach significantly reduces the need for large-labeled datasets in every new domain the chatbot encounters, streamlining the process of extending chatbot functionalities across various fields.

For example, an experimentation study focused on comparing Open Domain Question Answering (ODQA) solutions using the Haystack framework, particularly for troubleshooting documents [135]. The study explored various combinations of Retriever

and Reader components within Haystack to identify the most effective pair in terms of speed and accuracy. A dataset of 1246 question–answer pairs was created and divided into sets for training and validation, employing transfer learning with pre-trained models like BERT and RoBERTa on 724 questions. The performance of ten different Retriever–Reader combinations was assessed after fine-tuning these models. Notably, the combination of BERT Large Uncased with the ElasticSearch Retriever emerged as the most effective, demonstrating superior performance in top-1 answer evaluation metrics.

**Domain adaptation:** Domain adaptation in chatbots refers to the process of extracting and transferring knowledge from a chatbot experienced in one domain to another domain. For example, a chatbot trained in customer service for telecommunications can transfer some of its learned behaviors to retail customer service, adjusting only for domain-specific knowledge.

In a recent study, a personalized response generation model, PRG-DM, was developed using domain adaptation [136]. Initially, it learned broad human conversational styles from a large dataset, then fine-tuned on a smaller personalized dataset with a dual learning mechanism. The study also introduced three rewards for evaluating conversations on personalization, informativeness, and grammar, employing the policy gradient method to optimize for high-quality responses. Experimental results highlighted the model’s ability to produce distinctly better-personalized responses across different users.

**Dynamic data augmentation and synthetic data generation:** To support these advanced learning paradigms, dynamic data augmentation and synthetic data generation techniques can be utilized to enrich the training data. These methods artificially expand the dataset with new, varied examples derived from the existing data, improving the model’s ability to generalize from limited examples. In the context of chatbots, this could mean generating new user queries and dialogues that simulate potential real-world interactions, thereby providing a richer training environment for the chatbot to learn from [137]. For example, a framework called Chatbot Interaction with AI (CI-AI) was developed to train chatbots for natural human–machine interactions. It utilized artificial paraphrasing with the T5 model to expand its training data, enhancing the effectiveness of transformer-based NLP classification algorithms. This method led to a notable improvement in algorithm performance, with an average accuracy increase of 4.01% across several models. Specifically, the RoBERTa model trained on these augmented data reached an accuracy of 98.96%. By combining the top five performing models into an ensemble, accuracy further increased to 99.59%, illustrating the framework’s capacity to interpret human commands more accurately and make AI more accessible to non-technical users [129].

**Challenges and considerations:** While the potential benefits are vast, the practical application of few-shot, zero-shot, and one-shot learning in chatbots comes with a set of challenges. Ensuring the chatbot’s responses remain accurate and relevant in the face of sparse data points necessitates ongoing evaluation and refinement. Moreover, developing models that can effectively leverage these learning paradigms requires a deep understanding of the underlying mechanisms and the ability to translate this knowledge into conversational AI.

#### 5.4. Integrating Human Oversight

Integrating human oversight, commonly referred to as the “human-in-the-loop” approach, is a crucial strategy in the context of chatbot development and error correction. This method involves direct human participation in training, supervising, and refining the AI models that drive chatbots. Here is a detailed exploration of how this approach enhances chatbot functionality:

**Direct involvement in training and feedback.** In the human-in-the-loop method, human experts actively participate in the chatbot training process [138]. They provide valuable feedback on the chatbot’s responses, guiding and correcting them where

necessary. This involvement is particularly beneficial in addressing complex or nuanced queries that the chatbot might struggle with [139]. Human trainers can also help in tagging and labeling data more accurately, which is a vital part of supervised learning. Their expertise ensures high-quality training data, leading to more effective and accurate chatbot responses [140].

**Ongoing supervision and refinement.** Post-deployment, human supervisors monitor the chatbot's interactions to ensure it continues to respond appropriately [141]. They intervene when the chatbot fails to answer correctly or encounters unfamiliar scenarios, providing the correct response or action. This ongoing supervision allows for continuous refinement of the chatbot's algorithms. Human experts can identify and rectify subtle issues, such as context misunderstanding or tone misinterpretation, which might not be evident through automated processes alone [142].

**Enhancing personalization and empathy.** Human input is instrumental in enhancing the chatbot's ability to personalize interactions and respond empathetically. Humans can teach the chatbot to recognize and appropriately react to different emotional cues, a nuanced aspect that is challenging to automate [143]. By analyzing and understanding varied emotional responses and conversational styles, human trainers can program the chatbot to adapt its responses accordingly, making the interactions more relatable and engaging for users [144].

**Quality control and ethical oversight.** Human oversight also plays a crucial role in maintaining quality control, ensuring that the chatbot's responses meet ethical standards and do not inadvertently cause offense or harm [145]. This aspect is particularly vital in sensitive areas such as healthcare, finance, or legal advice, where inaccurate information or inappropriate language can have serious consequences [146].

**Balancing AI and human capabilities.** The human-in-the-loop approach effectively balances the strengths of AI with human intuition and understanding. It recognizes that while AI can handle a vast amount of data and provide quick responses, human judgment is essential for nuanced interpretation and ethical decision-making [147,148]. This balanced approach leads to the development of chatbots that are technically proficient and demonstrate a level of understanding and responsiveness that resonates more closely with human users.

## 6. Case Studies: Error Correction in Chatbots

In this section, we explore various case studies where chatbots learn from their mistakes to be successfully applied in a specific domain. This exploration is split into two parts: firstly, we demonstrate specific chatbots that have shown significant improvement through learning from errors; secondly, we analyze the strategies employed and the outcomes achieved. Table 3 provides a summary of these case studies.

**Table 3.** Examples of error correction strategies in chatbots across various domains.

Domain	Chatbot	Main Challenge	Strategy Implemented	Outcome
E-commerce	Intelligent conversational agent for customer service [149]	Handling complex customer service inquiries	Data-driven feedback loops, continuous learning	Enhanced customer interaction by adapting to user preferences, leading to improved satisfaction.
Healthcare	"Ted", designed to assist individuals with mental health concerns [150]	Providing accurate health advice	Human intervention, continuous learning models	Increased usability and reliability in providing health advice, improved patient engagement.
Banking	Customer service chatbot for processing natural language queries [151]	Processing natural language queries efficiently	Semi-supervised learning, feedback mechanism	Improved efficiency in customer service, better accuracy in understanding and classifying queries.

<b>Travel</b>	Advanced chatbot system on the Echo platform for travel planning [152]	Personalizing travel recommendations	RL, deep neural network (DNN) approach	Improved travel planning with personalized recommendations, enhanced user experience.
<b>Education</b>	LLM-based chatbot designed to enhance student understanding and engagement with personalized learning recommendations [153]	Ensuring student commitment through clear explanations of the rationale behind personalized recommendations	Utilized a knowledge graph (KG) to guide LLM responses, incorporated group chat with human mentors for additional support	User study demonstrated the potential benefits and limitations of using chatbots for conversational explainability in educational settings
<b>Language Learning</b>	Language learning chatbot developed during COVID-19 pandemic [154]	Correcting language mistakes and providing explanations	Human-in-the-loop, continuous user interaction data	More effective language learning through personalized instruction and feedback.

### 6.1. Effective Chatbot Learning Examples

Several chatbots across different industries have shown remarkable progress in enhancing their interaction quality by learning from errors. The strategies employed range from data-driven feedback loops to advanced ML models, showcasing the versatility and adaptability of chatbots in enhancing user interaction quality [155–157].

#### 6.1.1. Customer Service Chatbot in E-Commerce

In e-commerce, chatbots are implemented for handling customer queries. Through the integration of a feedback loop, these chatbots start to learn from customer interactions. Over time, they begin to recognize specific customer preferences and context, leading to more accurate product suggestions and higher customer satisfaction rates [158].

In an innovative application within the e-commerce sector, a new study has leveraged an intelligent, knowledge-based conversational agent to enhance its customer service capabilities [149]. The system's core is a unique knowledge base (KB) that continuously improves itself to offer superior support over time. The KB organizes customer knowledge into six categories: knowledge about the customer, knowledge from the customer, knowledge for the customer, reference information on products (such as comments from social media), confirmed knowledge from reliable sources (like manuals), and pre-confirmed knowledge awaiting human expert review.

A web crawler automatically gathers information from the internet to keep the KB updated with fresh data. An NLP engine analyzes user queries to understand their intent and meaning by recognizing keywords, entities, and grammatical structure. The dialogue module manages conversation flow, using the NLP engine to interpret user queries and retrieve relevant information from the KB. If an answer is found, the reply generator provides a response. Otherwise, the query is handed off to a human customer service representative. A handover module facilitates the transition between the chatbot and human representatives for complex queries, while an adapter allows the chatbot to connect with various online chat platforms.

A prototype system was implemented for a leading women's intimate apparel company, with positive results demonstrating increased customer service efficiency, improved customer satisfaction, and an enhanced knowledge base. This intelligent chatbot system offers a valuable tool for customer service applications across various industries, automating routine inquiries, improving customer experience, and freeing up human staff for more strategic tasks.

### 6.1.2. Healthcare Assistant Chatbot

Healthcare chatbots aim to assist patients with appointment scheduling and medication reminders [159]. Such chatbots may initially face challenges in interpreting patient inputs correctly. By employing supervised learning techniques, where the chatbots are trained with a more extensive set of medical terms and patient interaction scenarios, the accuracy of their responses improves significantly.

A recent study explored the development of an AI-powered chatbot named “Ted”, designed to assist individuals with mental health concerns [150]. The proposed solution aims to combat the shortage of mental healthcare providers by using NLP and deep learning techniques to understand user queries and provide supportive responses. The chatbot employs NLP methods such as tokenization, stop word removal, lemmatization, and lowercasing to preprocess user input. A neural network with Softmax activation is used for intent classification. Initial results demonstrate high accuracy (98.13%), suggesting the effectiveness of the proposed approach. This research highlights the potential of AI chatbots to offer accessible mental health support and address the stigma associated with seeking traditional help. Future studies should focus on conducting clinical validation to assess real-world benefits and addressing critical safety and ethical considerations.

Focusing on the underexplored area of hypertension self-management, a recent study introduced “Medicagent”, a chatbot developed through a user-centered design process utilizing Google Cloud’s Dialogflow [160]. This chatbot underwent rigorous usability testing with hypertension patients, involving tasks, questionnaires, and interviews, highlighting its potential to enhance self-management behaviors. With an impressive completion rate for tasks and a System Usability Scale (SUS) score of 78.8, indicating acceptable usability, “Medicagent” demonstrated strong potential in patient assistance. However, feedback suggested areas for improvement, including enhanced navigation features and the incorporation of a health professional persona to increase credibility and user satisfaction.

### 6.1.3. Banking Support Chatbot

In the banking sector, chatbots can assist customers with account inquiries and transactions. The incorporation of semi-supervised learning, where the bot is trained using a combination of labeled and unlabeled transaction data, enables it to better understand and classify different transaction requests, leading to more efficient customer service [161].

A recent study explored the development of a chatbot designed to enhance customer service efficiency in banking by processing natural language queries and providing timely responses [151]. A notable feature of this chatbot is its ability to learn from its mistakes through a feedback mechanism. When the chatbot fails to deliver a satisfactory answer, users can indicate their dissatisfaction via a Dislike button. Such responses are logged, allowing developers to later refine the chatbot’s database and retrain its classification model with accurate answers, thus progressively improving its performance and dataset accuracy. The study compared seven classification algorithms to identify the most effective for categorizing user queries. The integration of NLP, vectorization, and classification algorithms enables the chatbot to efficiently classify new queries without the need for retraining each time, significantly reducing processing time. Through usability testing, the Random Forest and Support Vector Machine classifiers emerged as the most accurate, informing the final choice for the chatbot’s design. In addition, query mapping and response generation were further refined using cosine similarity to match user queries with the most relevant answers from the dataset. This approach ensured that the chatbot remains domain-specific, with built-in thresholds for cosine similarity to manage out-of-domain queries effectively.

#### 6.1.4. Travel Booking Chatbot

Chatbots have proven useful for booking flights and hotels. RL enables these chatbots to improve their performance by rewarding the chatbot for accurately understanding booking details. Additionally, these chatbots can be trained to ask clarifying questions when faced with ambiguous user input, leading to more accurate bookings and an overall enhanced user experience [152,162].

For instance, a pioneering study introduced an advanced chatbot system designed for the Echo platform, showcasing a significant leap in enhancing human-machine interactions within the travel industry [152]. This chatbot, developed with the goal of streamlining travel planning, leverages a deep neural network (DNN) approach, specifically employing the Restricted Boltzmann Machine (RBM) combined with Collaborative Filtering techniques. It excels in gathering user preferences to form a comprehensive knowledge base, which in turn facilitates highly personalized travel recommendations.

A key feature of this chatbot is its capacity for learning from user interactions. As travelers interact with the chatbot, providing feedback and preferences, the system fine-tunes its recommendation algorithms. This continuous learning process improves the accuracy of travel suggestions over time and significantly enhances user experience by making interactions more intuitive and responses more relevant to individual needs.

#### 6.1.5. Education

Chatbots are rapidly transforming the educational landscape, offering innovative solutions for personalized learning, 24/7 support, and enhanced engagement. These AI-powered tools can analyze student data to create tailored learning paths, provide instant feedback, and automate administrative tasks, allowing educators to focus on meaningful interactions [163]. Interactive features like quizzes, games, and simulations make learning more enjoyable and effective. Chatbots can also assist with language learning, mental health support, and special needs education, catering to diverse student needs.

For example, Abu-Rasheed et al. presented an LLM-based chatbot designed to support students in understanding and engaging with personalized learning recommendations [153]. Recognizing that student commitment is linked to understanding the rationale behind recommendations, the authors proposed using the chatbot as a mediator for conversational explainability. The system leverages a knowledge graph (KG) as a reliable source of information to guide the LLM's responses, ensuring accurate and contextually relevant explanations. This approach mitigates the risks associated with uncontrolled LLM output while still benefiting from its generative capabilities. The chatbot also incorporates a group chat feature, allowing students to connect with human mentors when needed or when the chatbot's capabilities are exceeded. This hybrid approach combines the strengths of both AI and human guidance to provide comprehensive support. The researchers conducted a user study to evaluate the chatbot's effectiveness, highlighting the potential benefits and limitations of using chatbots for conversational explainability in educational settings. This study serves as a proof-of-concept for future research and development in this area.

Heller et al. (2005) explored the use of "Freudbot," an AIML-based chatbot emulating Sigmund Freud, to investigate whether a famous person chatbot could enhance student engagement with course content in a distance education setting [164]. The study involved 53 psychology students who interacted with Freudbot for 10 min, followed by a questionnaire assessing their experience. While student evaluations of the chat experience were neutral, participants expressed enthusiasm for chatbot technology in education and provided insights for future improvement. An analysis of chat logs revealed high levels of on-task behavior, suggesting the potential for chatbots as effective learning tools in online and distance education environments.

### 6.1.6. Language Learning Assistant

The challenge in the design of language learning chatbots is providing correct grammar explanations. By integrating the human-in-the-loop approach, language experts are able to provide direct feedback and corrections [163]. This human oversight, combined with continuous user interaction data, allows the chatbot to refine its grammar teaching techniques, becoming a more effective learning tool [165].

As an example, during the COVID-19 pandemic, an innovative chatbot was developed to support and motivate second language learners, leveraging Dialogflow for its construction [154]. Designed to complement in-class learning with active, out-of-class interactions, this chatbot adapts to each learner's unique abilities and learning pace, offering personalized instruction. A significant aspect of its design is the capability to learn from interactions, particularly addressing and correcting language mistakes. By engaging in chats, the chatbot identifies areas of difficulty for learners, adjusting its instructional approach accordingly. Hosted on a language center's Facebook page, it provides a familiar and accessible learning environment, facilitating 24/7 language practice. This chatbot exemplifies how AI can enhance language learning by adapting to individual learning needs and continuously improving its instructional methods based on learner feedback and errors.

Another example is "Ellie", a second language (L2) learning chatbot, that leverages voice recognition and rule-based response mechanisms to support language acquisition [166]. Developed with a focus on user-centered design, Ellie offers three interactive modes to cater to diverse learning needs. Its use of Dialogflow for NLP enables it to understand and respond to complex queries. The key to Ellie's design is its capacity for iterative improvement; by analyzing user interactions and feedback, it continuously refines its responses. Piloted among Korean high school students, Ellie demonstrated its potential as an effective educational tool, underscoring the importance of adaptability and personalized learning in language education.

## 6.2. Strategy Analysis and Outcomes

In examining the case studies of chatbots that have effectively learned from their mistakes, it becomes evident that the success of these chatbots centers around the strategic application of specific error correction methodologies. This analysis focuses on dissecting the strategies employed and evaluating their outcomes, providing a comprehensive understanding of what works in practical settings.

### 6.2.1. Feedback Loops and User Engagement

In e-commerce and travel booking chatbots, feedback loops play a pivotal role [167,168]. The direct input from users helps these chatbots to fine-tune their understanding of user preferences and requests. The outcome is a marked improvement in response accuracy, reflected in higher user satisfaction rates and increased efficiency in handling queries. The active involvement of users in shaping the chatbot's learning curve also fosters a sense of engagement and trust [169,170].

### 6.2.2. Supervised Learning for Domain-Specific Accuracy

Healthcare and banking support chatbots can benefit significantly from supervised learning, where they are trained with a curated dataset specific to their operational domains [79]. The outcome is an enhanced ability to comprehend and accurately respond to specialized queries. This precision in understanding domain-specific language and queries elevates the user experience and inspires confidence in users relying on these chatbots for critical information.



### 6.2.3. Semi-Supervised Learning for Expansive Understanding

In banking chatbots, the application of semi-supervised learning can allow for a broader understanding of transaction types by leveraging both labeled and unlabeled data [119]. The outcome is a more versatile chatbot capable of handling a diverse range of customer requests, reducing error rates, and improving overall service efficiency [171].

### 6.2.4. RL for Dynamic Adaptation

Travel booking chatbots can use RL by being rewarded for accurate interpretations, resulting in the chatbot developing a more nuanced understanding of user queries over time [3]. The dynamic nature of this learning approach leads to continuous improvement in performance, adapting to user behaviors and preferences. For example, Le et al. [172] introduced a novel method for modeling contextual information in conversational responses, aiming to improve accuracy. They combined a Deep Seq2Seq model with RL. The Deep Seq2Seq model generates responses based on the conversation history (left context), while RL evaluates the entire conversation for coherence (right context). Additionally, pre-trained word embeddings are employed to represent words and construct reward functions for the RL component. This approach resulted in more coherent responses compared to baseline models. Interestingly, the study also found that static word embeddings, which are pre-trained and more efficient to obtain, were more effective than embeddings learned from the trained model itself.

### 6.2.5. Human-in-the-Loop for Nuanced Corrections

Language learning chatbots can be further enhanced by human oversight. The direct intervention by language experts provides an additional layer of accuracy and contextual understanding [141].

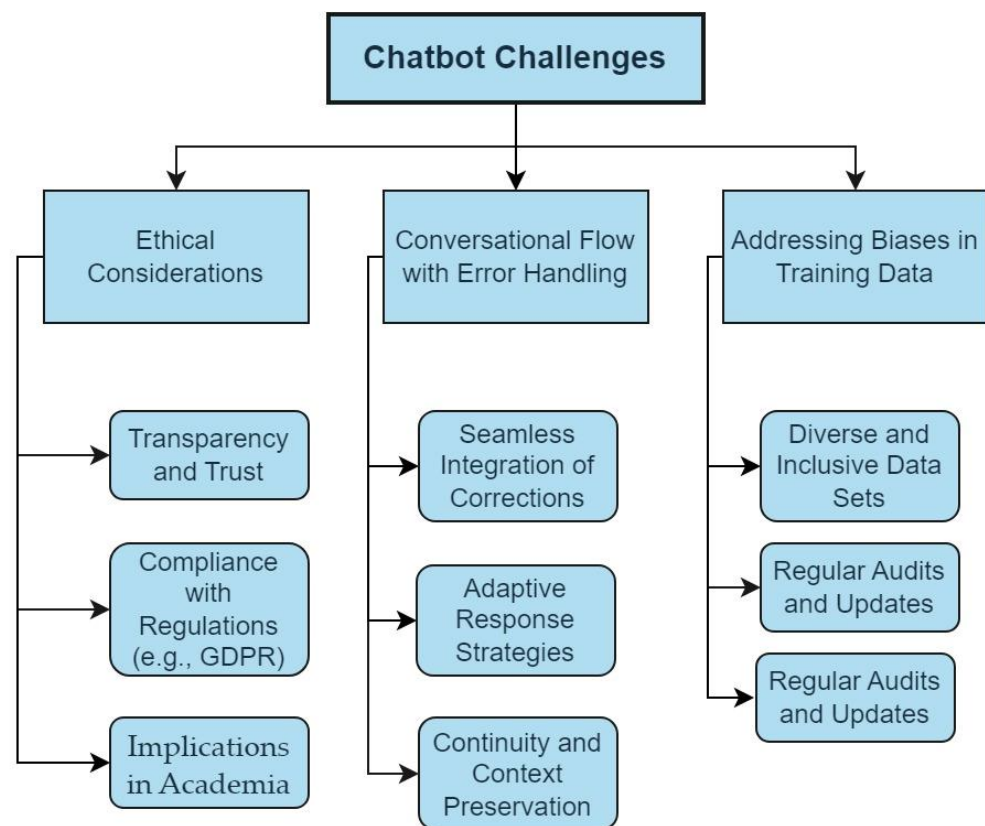
The concept of human-in-the-loop (HITL) is not new. It has previously been suggested to incorporate human feedback into computer-related processes to enhance their efficiency. For instance, one approach is to utilize paid feedback from individuals through crowdsourcing platforms like Amazon Turk [173]. Another example is seen in the Pay-as-You-Go dataspace, where users provide feedback to aid in resolving entities during data integration [174]. The HITL concept is also applied in few-shot learning, active learning, transfer learning, and user guidance [175].

### 6.2.6. Overall Impact and Business Value

These improvements will foster a deeper sense of trust and reliability among users, which is crucial for the long-term adoption of chatbot technology [176]. Business-oriented chatbots are commonly utilized in corporate settings. In addition to interacting with users, these chatbots possess the capability to handle business process data and provide relevant information pertaining to specific business matters. Typically, they are integrated into applications or websites that are associated with business operations, serving as auxiliary tools. Examples of chatbots falling under the category of business management include CardBot, Naver TalkTalk, SuperAgent, and numerous others [177,178].

## 7. Challenges and Considerations

As the field of chatbot development advances, it encounters a range of challenges and considerations that require careful navigation. This section investigates the crucial aspects that impact the efficacy and integrity of chatbots [179]. We will explore the ethical considerations inherent in chatbot training, the balance between error correction and maintaining a natural conversational flow, and the importance of addressing biases in training data. Figure 4 summarizes these challenges and considerations.



**Figure 4.** Challenges and considerations in chatbot development.

### 7.1. Ethical Considerations in Chatbot Training

A primary ethical concern in chatbot training involves handling user data. Ensuring data privacy and obtaining explicit user consent for data collection are imperative. Chatbots must be designed to protect sensitive information and comply with data protection regulations like GDPR [180].

Ethical training of chatbots also requires transparency [181]. Users should be aware that they are interacting with a bot and not a human. This clarity helps in setting realistic expectations and fosters trust [182]. For instance, a review emphasized the need for ethical considerations in chatbot use in nephrology, including robust guidelines for data collection, storage, and sharing, and effective security measures [183].

The emergence of chatbots like ChatGPT in academia presents both opportunities and challenges [184]. While these AI tools can aid brainstorming, drafting, and editing, concerns about plagiarism, over-reliance, and the potential devaluation of original thought have arisen. To navigate this landscape, clear policies are needed. These could include guidelines on appropriate chatbot use, transparent citation practices when AI is utilized, and educational initiatives to ensure students develop critical thinking and writing skills alongside AI assistance. Balancing the benefits of AI with academic integrity and the encouragement of independent thought will be crucial in shaping the future of academic writing.

### 7.2. Balancing Error Correction with Maintaining Conversational Flow

**Seamless integration of corrections:** While error correction is essential, it is important to integrate these corrections without disrupting the natural flow of conversation. The chatbot should be adept at handling corrections in a way that feels seamless and intuitive to the user [185].

**Adaptive response strategies:** Implementing adaptive response strategies helps in maintaining conversational flow. For instance, if a chatbot does not understand a query,

it should employ strategies like asking clarifying questions rather than abruptly ending the conversation or repeatedly making incorrect guesses [186]. For instance, Jeong et al. [187] highlighted the significance of adaptive learning in the field of educational technology and presented a comprehensive framework for the utilization of ChatGPT or comparable chatbots in adaptive learning. The framework included customized design, focused resources, feedback, multi-turn dialogue models, RL, and fine-tuning. In another work, Wang et al. [188] presented an adaptive response-matching network (ARM) that enhances multi-turn conversation modeling. They incorporated distinct response-matching encoders for various types of utterances and a knowledge embedding component for domain-specific knowledge. The ARM outperformed existing methods with a reduced number of parameters.

**Continuity and context preservation:** Preserving context throughout a conversation, even after corrections are made, is key to natural dialogue flow. Chatbots should be capable of referencing previous parts of the conversation to maintain continuity [77].

### 7.3. Addressing Biases in Training Data

**Diverse and inclusive data sets:** One of the primary methods to address biases in chatbots is by using diverse and inclusive training data. This includes data that represent various demographics, dialects, and cultural backgrounds, reducing the likelihood of a biased response system [189].

**Regular audits and updates:** Regular audits of chatbot responses and continuous updates to the training data are essential in mitigating biases. These audits help in identifying and rectifying any skewed patterns or prejudiced responses that the chatbot may have learned [190].

**Human oversight in training:** Incorporating human oversight in the training process can significantly help in identifying and addressing biases. Human evaluators bring a level of understanding and cultural context that is currently beyond the scope of AI [183].

## 8. Future of Chatbot Training

The way we train chatbots is constantly changing. With each breakthrough, they become more capable and more “human-like” in their interactions. The future holds the promise of chatbots that feel less like tools and more like helpful companions in our daily lives. Table 4 summarizes the future technological trends for chatbot training.

**Table 4.** The future of chatbot training: key technologies.

Technology/Trend	Description	Key Benefits
Advanced NLU Capabilities	Chatbots will have an enhanced understanding of natural language, including regional dialects, nuances, and idioms.	Interactions become more natural and human-like.
Voice Recognition and Synthesis Improvements	Chatbots will excel at understanding spoken language, recognizing intonation and emotion in addition to words.	Makes chatbots more accessible, especially alongside voice-based assistants.
Emotional Intelligence (EI)	Chatbots can recognize and respond to a user’s emotional state.	Conversations feel more empathetic and tailored to the user’s needs.
Augmented and Virtual Reality (AR/VR) Integration	Chatbots provide dynamic and interactive experiences in immersive environments.	Offers new ways for users to interact, like virtual shopping assistance.
Blockchain, IoT, 5G	Blockchain (secure data), IoT (smart device control), and 5G (reduced latency) will work together with chatbots.	Enhances security, provides new levels of interactivity, and makes chatbots faster.

Explainable AI (XAI)	Makes the "black box" of AI decision-making transparent.	Builds trust as users understand how the chatbot functions.
Generative Adversarial Networks (GANs)	Generates realistic data through adversarial training of generator and discriminator networks.	Produces highly realistic and sharp outputs.
Variational Autoencoders (VAEs)	Learns to generate diverse samples by compressing and reconstructing data.	Generates diverse and contextually relevant responses by learning the underlying distribution of dialogue data.
Difussion Models (DMs)	Generative models that learn to generate data by reversing a gradual noising process.	Produces high-quality, diverse samples with better stability and control compared to previous models.
Graph Neural Networks (GNNs)	Allows chatbots to process complex data structures like social networks or CRM data.	Provides personalized experiences, as bots better understand user context.
Quantum Computing	(While far off) promises vastly improved processing power for real-time learning.	Could lead to major leaps in chatbot capabilities, but is not an immediate factor.
Federated Learning	Training occurs on decentralized data, prioritizing user privacy.	Protects sensitive data, builds trust, and lets chatbots train on a broader range of real-life interactions.
Meta-Learning	Chatbots adapt to new topics or conversational styles quickly and easily.	Makes chatbots versatile and adaptable to different scenarios.
Semi-Supervised Learning	Leverages unlabeled data, reducing time-consuming labeling tasks.	Makes training easier with abundant real-world conversational data.
Multimodal Chatbots	Chatbots understand and respond to text, images, videos, and voice simultaneously.	Offers richer, more dynamic user experiences.
Personalization using Reinforcement Learning (RL)	Chatbots use reward feedback systems to tailor responses to individual users.	Conversations become more satisfying and successful.
Error Correction Improvements	Chatbots proactively identify and fix errors, using self-learning and pattern recognition.	Interactions become more accurate and reliable.

### 8.1. Emerging Technologies and Methods in Chatbot Training

Advances in AI continue to push the boundaries of chatbot training. A key trend is the development of advanced NLU capabilities. The evolution of deep learning techniques and complex neural network architectures promises chatbots an unprecedented level of language comprehension. This means future chatbots will be better equipped to grasp nuances, idioms, and even regional dialects, making interactions feel more natural and human-like [120,191].

Another significant technological breakthrough is in voice recognition and synthesis [192]. With voice-based assistants becoming increasingly common, the ability of chatbots to understand and respond in spoken language is crucial. This goes beyond mere word recognition; understanding intonation, emotion, and context is also essential.

Emotional intelligence in chatbots, enabling them to detect and respond to users' emotional states, is another emerging frontier [193]. This could include analyzing vocal cues or textual inputs to gauge mood and adjust responses accordingly.

Furthermore, augmented reality (AR) and virtual reality (VR) are beginning to play a role in chatbot training. In immersive environments, chatbots can offer dynamic, context-aware interactions. For instance, a chatbot within a virtual store might provide

recommendations or information based on a user's interactions with virtual products [194].

Emerging technologies like Blockchain and the Internet of Things (IoT), alongside advancements in connectivity such as 5G, are expected to introduce new layers of security, interactivity, and responsiveness. Blockchain could ensure secure and transparent data handling, while IoT integration might extend chatbot functionality to control smart devices, enhancing user experience. The advent of 5G promises significantly reduced latency, making chatbot interactions faster and more efficient.

### 8.2. Innovative Algorithms in Chatbot Training

On the algorithmic front, the introduction of explainable AI (XAI) techniques, generative adversarial networks (GANs), variational autoencoders (VAEs), diffusion models, graph neural networks (GNNs), and federated learning is poised to revolutionize chatbot training.

**XAI:** A critical challenge in AI, particularly with deep learning models, is the "black box" effect, where the internal decision-making process remains opaque. XAI techniques aim to shed light on how a model arrives at its conclusions. In the context of chatbots, XAI can make their decision-making processes transparent. This allows users to understand why a chatbot responds in a certain way, fostering trust and user confidence in the system's reliability. For example, XAI could highlight which keywords or user data points triggered a specific response, enabling users to see the reasoning behind the chatbot's interaction [195].

**GANs:** These powerful neural networks are known for their ability to generate realistic data, including text. In chatbot development, GANs hold promise for creating more diverse and nuanced conversational responses. Imagine a chatbot trained on a massive dataset of text conversations. A GAN could leverage these data to generate new, creative responses that go beyond simply regurgitating pre-programmed phrases. This would allow chatbots to engage in more natural and engaging conversations, mimicking human-like dialogue patterns [196,197].

**VAEs:** VAEs have emerged as a powerful tool in chatbot training, offering a unique approach to generating diverse and contextually relevant responses [198,199]. VAEs learn a latent representation of dialogue data, capturing the underlying distribution of potential responses. This enables the generation of novel responses that are not simply parroting the training data. By sampling from this latent space, chatbots can produce a wider range of replies, enhancing their creativity and adaptability. Moreover, VAEs can be conditioned on specific attributes or contexts, allowing for more tailored and nuanced conversations. This capability is particularly valuable in applications like customer service or mental health support, where personalized interactions are crucial.

**Diffusion Models (DMs):** These state-of-the-art models are revolutionizing chatbot training by enabling the generation of high-quality, diverse, and contextually relevant responses [200,201]. By learning to reverse a gradual noising process, DMs can generate text that is more coherent and less prone to the common pitfalls of previous generative models, such as repetition or nonsensical outputs [202]. This enhanced control over the generation process allows for the fine-tuning of response styles, sentiment, and even specific attributes, making chatbot interactions more natural and engaging. Additionally, the iterative nature of DM generation enables real-time feedback and adaptation, leading to more dynamic and personalized conversations. As a result, DMs are poised to significantly advance the capabilities of chatbots in various applications, from customer service and education to creative writing and even mental health support.

**GNNs:** These AI models excel at processing data structured as graphs—networks with interconnected nodes and edges. Social media networks, knowledge graphs, and customer relationship management (CRM) data are all examples of graph-structured information. GNNs could equip chatbots with the ability to understand these complex data structures, leading to more accurate and insightful interactions. For instance, a

customer service chatbot could leverage a GNN to analyze a customer's past interactions and preferences, enabling it to provide more personalized and relevant support [203].

**Quantum computing:** While still in its early stages, quantum computing has the potential to significantly improve chatbot training [204]. Traditional computers process information in bits (0 s or 1 s). Quantum computers utilize qubits, which can exist in multiple states simultaneously. This allows for vastly increased processing power. Integrating quantum computing into chatbot training could enable real-time learning from massive datasets, leading to faster development and more sophisticated chatbots with superior performance. However, it is important to acknowledge that quantum computing technology is still under development, and its practical application in chatbot training is likely still a few years away [205].

**Federated learning:** Federated learning prioritizes user privacy by enabling chatbots to train directly on decentralized data sources such as smartphones and web browsers. Instead of centralizing sensitive user data, only the updated learning parameters of the model are shared. This approach reduces the risk of data breaches and fosters trust in chatbot interactions, especially when personal information is involved.

Furthermore, federated learning enables chatbots to benefit from a vast and diverse pool of real-world conversations. This exposure to various language styles and interaction patterns allows chatbots to adapt more effectively to a broader population of users. Moreover, federated learning creates opportunities for cross-organizational collaboration in chatbot development. Organizations can contribute to training a shared model without compromising the privacy of their proprietary data, resulting in more robust and knowledgeable chatbots [206,207].

**Meta-learning:** Meta-learning, with its focus on "learning to learn," holds the potential to enhance chatbot training significantly. In traditional machine learning, a model is trained for a specific task. Meta-learning aims to create models that can quickly adapt to new tasks or domains with minimal additional training data [208]. For chatbots, this means they could become more flexible and versatile, able to handle new topics or conversational styles with ease. Meta-learning techniques like MAML (model-agnostic meta-learning) and reptile are particularly promising in this regard [209].

**Semi-supervised learning:** Chatbot training can benefit greatly from semi-supervised learning approaches. These techniques can utilize both labeled and unlabeled data, addressing the challenge of acquiring large, meticulously annotated datasets. Since real-world conversational data are often abundant but labor-intensive to label, semi-supervised learning unlocks a wealth of potential training material. Methods like consistency regularization, pseudo-labeling, and generative modeling are all relevant to chatbot development [210].

**Multimodal chatbots:** Chatbots are evolving beyond purely text-based interactions. Integrating modalities like images, videos, and voice offers a richer, more engaging user experience. Exploring algorithms specifically designed for understanding and combining multiple modalities is an area of active research. Key considerations include synchronizing different input streams, resolving potential conflicts between modalities, and ensuring that the bot can respond in a way that leverages the strengths of each provided input type [192,211].

For example, in a pioneering work, Das et al. (2017) introduced the task of Visual Dialog, wherein an AI agent engages in meaningful conversation with humans about visual content [212]. Given an image, dialogue history, and a question, the agent must ground the question in the image, infer context from the dialogue history, and respond accurately. This task serves as a general test of machine intelligence while remaining grounded in visual understanding, allowing for objective evaluation and benchmarking progress. The authors developed a novel data collection protocol and curated a large-scale Visual Dialog dataset (VisDial), comprising 1.4 million question-answer pairs on 140,000 images from the COCO dataset. They also proposed a family of neural encoder-decoder models for Visual Dialog, achieving superior performance compared to various baselines.

This work represents a significant step towards the development of “visual chatbots” capable of engaging in sophisticated dialogues about visual content.

**Personalization and adaptability:** Personalization and adaptability are crucial elements in crafting engaging and effective chatbot interactions. To avoid generic, one-size-fits-all responses, chatbots need the ability to tailor their communication style and content to individual users. RL provides a powerful framework for achieving this [213]. Within RL, the chatbot acts as an agent that continuously learns through a system of rewards and feedback. Positive user reactions or successful outcomes trigger rewards, while negative feedback or failure to achieve conversational goals do the opposite. This enables the chatbot to dynamically refine its responses and actions over time, leading to an increasingly personalized and satisfying user experience.

Additionally, contextual bandits offer another avenue for personalization and adaptability. These algorithms excel at real-time decision-making, analyzing the ongoing conversation to understand user intent, conversational history, and other relevant factors. Based on this contextual understanding, the chatbot can select the most appropriate response, offer relevant product suggestions, or take actions tailored to the user’s specific needs and preferences [214].

### *8.3. Evolution of Error Correction in Chatbots*

As chatbot technologies progress, we can anticipate significant advancements in error correction mechanisms. The future points towards an increased use of self-learning algorithms [215], enabling chatbots to autonomously learn from interactions and correct their mistakes in real time. Additionally, predictive analytics will play a crucial role in preemptive error correction. Through pattern recognition and anticipation, chatbots will learn to identify and address potential issues before they negatively impact user experience [37].

To further accelerate chatbot training, cross-platform learning could emerge as a key factor [216]. By leveraging interaction data from different platforms and contexts, chatbots could broaden their understanding, improve their adaptability, and minimize errors across various conversational scenarios. Importantly, hybrid approaches that combine the power of self-learning with targeted human intervention will remain valuable.

Furthermore, as error correction evolves, we can anticipate a focus on developing error taxonomies. Chatbots will need to become adept at recognizing not only factual inaccuracies but also misunderstandings, social missteps, and other subtle conversational pitfalls.

Overall, the future of chatbot training indicates a refinement in language processing, an elevation in emotional intelligence, deeper integration with immersive technologies, and advanced self-learning capabilities. These advancements will drive the development of highly effective error correction mechanisms, fostering meaningful, context-aware, and emotionally responsive interactions with users. As these technologies continue to mature, chatbots are poised to play an increasingly integral role in our digital experience and offer new levels of automation, personalization, and support.

## **9. Conclusions**

This exploration of chatbot technology highlighted the vital role of error correction in the ongoing evolution of these intelligent systems. We examined common errors in chatbot interactions, such as misunderstandings and factual inaccuracies, emphasizing the importance of data-driven approaches, algorithmic adjustments, and human oversight in addressing these issues. Real-world case studies demonstrated the practical application and benefits of these strategies.

Looking ahead, advancements in ML, particularly in NLP and emotional intelligence, hold the key to significantly enhanced chatbot capabilities. The future of chatbots lies in their ability to learn autonomously from interactions, adapt to new challenges, and offer increasingly empathetic and intuitive user experiences. As chatbots become increasingly

integrated into our lives, their continual improvement and adaptation will be crucial for providing valuable, reliable, and engaging interactions.

**Funding:** This research received no external funding.

**Conflicts of Interest:** The authors declare no conflict of interest.

## References

- Gupta, A.; Hathwar, D.; Vijayakumar, A. Introduction to AI chatbots. *Int. J. Eng. Res. Technol.* **2020**, *9*, 255–258.
- Adamopoulou, E.; Moussiades, L. Chatbots: History technology, and applications. *Mach. Learn. Appl.* **2020**, *2*, 100006.
- Suhaili, S.M.; Salim, N.; Jambli, M.N. Service chatbots: A systematic review. *Expert Syst. Appl.* **2021**, *184*, 115461.
- Adam, M.; Wessel, M.; Benlian, A. AI-based chatbots in customer service and their effects on user compliance. *Electron. Mark.* **2021**, *31*, 427–445.
- Moriuchi, E.; Landers, V.M.; Colton, D.; Hair, N. Engagement with chatbots versus augmented reality interactive technology in e-commerce. *J. Strateg. Mark.* **2021**, *29*, 375–389.
- Bhirud, N.; Tataale, S.; Randive, S.; Nahar, S. A literature review on chatbots in healthcare domain. *Int. J. Sci. Technol. Res.* **2019**, *8*, 225–231.
- Okonkwo, C.W.; Ade-Ibijola, A. Chatbots applications in education: A systematic review. *Comput. Educ. Artif. Intell.* **2021**, *2*, 100033.
- Kecht, C.; Egger, A.; Kratsch, W.; Röglinger, M. Quantifying chatbots' ability to learn business processes. *Inf. Syst.* **2023**, *113*, 102176.
- Kaczorowska-Spychalska, D. How chatbots influence marketing. *Management* **2019**, *23*, 251–270.
- Achiam, J.; Adler, S.; Agarwal, S.; Ahmad, L.; Akkaya, I.; Aleman, F.L. Gpt-4 technical report. *arXiv* **2023**, arXiv:2303.08774.
- Hwang, G.-J.; Chang, C.-Y. A review of opportunities and challenges of chatbots in education. *Interact. Learn. Environ.* **2023**, *31*, 4099–4112.
- Mehrabani, N.; Morstatter, F.; Saxena, N.; Lerman, K.; Galstyan, A. A survey on bias and fairness in machine learning. *ACM Comput. Surv. (CSUR)* **2021**, *54*, 1–35.
- Ying, X. An overview of overfitting and its solutions. *J. Phys. Conf. Ser.* **2019**, *1168*, 022022.
- Amodei, D.; Olah, C.; Steinhardt, J.; Christiano, P.; Schulman, J.; Mané, D. Concrete problems in AI safety. *arXiv* **2016**, arXiv:1606.06565.
- Manjarrés, Á.; Fernández-Aller, C.; López-Sánchez, M.; Rodríguez-Aguilar, J.A.; Castañer, M.S. Artificial intelligence for a fair, just, and equitable world. *IEEE Technol. Soc. Mag.* **2021**, *40*, 19–24.
- Kamishima, T.; Akaho, S.; Asoh, H.; Sakuma, J. Fairness-aware classifier with prejudice remover regularizer. In Proceedings of the Machine Learning and Knowledge Discovery in Databases: European Conference, ECML PKDD 2012, Bristol, UK, 24–28 September 2012; Proceedings, Part II 23; Springer: Berlin/Heidelberg, Germany, 2012; pp. 35–50.
- Davis, S.E.; Walsh, C.G.; Matheny, M.E. Open questions and research gaps for monitoring and updating AI-enabled tools in clinical settings. *Front. Digit. Health* **2022**, *4*, 958284.
- Sculley, D.; Holt, G.; Golovin, D.; Davydov, E.; Phillips, T.; Ebner, D.; Dennison, D. Hidden technical debt in machine learning systems. *Adv. Neural Inf. Process. Syst.* **2015**, *28*, 1–9.
- Horvitz, E. Principles and applications of continual computation. *Artif. Intell.* **2001**, *126*, 159–196.
- Amershi, S.; Begel, A.; Bird, C.; DeLine, R.; Gall, H.; Kamar, E.; Zimmermann, T. Software engineering for machine learning: A case study. In Proceedings of the 2019 IEEE/ACM 41st International Conference on Software Engineering: Software Engineering in Practice (ICSE-SEIP), Montréal, Canada, 25–31 May 2019; IEEE: Piscataway, NJ, USA; pp. 291–300.
- Adamopoulou, E.; Moussiades, L. An overview of chatbot technology. In *Proceedings of the IFIP International Conference on Artificial Intelligence Applications and Innovations, Neos Marmaras, Greece, 5–7 June 2020*; Springer: Berlin/Heidelberg, Germany, 2020; pp. 373–383.
- McTear, M.; Ashurkina, M. A New Era in Conversational AI. In *Transforming Conversational AI: Exploring the Power of Large Language Models in Interactive Conversational Agents*; Springer: Berlin/Heidelberg, Germany, 2024; pp. 1–16.
- Galitsky, B.; Galitsky, B. Adjusting chatbot conversation to user personality and mood. *Artificial Intelligence for Customer Relationship Management: Solving Customer Problems*; Springer: Berlin/Heidelberg, Germany, 2021; pp. 93–127.
- Peng, Z.; Ma, X. A survey on construction and enhancement methods in service chatbots design. *CCF Trans. Pervasive Comput. Interact.* **2019**, *1*, 204–223.
- Rožman, M.; Oreški, D.; Tominc, P. Artificial-intelligence-supported reduction of employees' workload to increase the company's performance in today's VUCA Environment. *Sustainability* **2023**, *15*, 5019.
- Toader, D.-C.; Boca, G.; Toader, R.; Măcelaru, M.; Toader, C.; Ighian, D.; Rădulescu, A.T. The effect of social presence and chatbot errors on trust. *Sustainability* **2019**, *12*, 256.
- Thorat, S.A.; Jadhav, V. A review on implementation issues of rule-based chatbot systems. In Proceedings of the International Conference on Innovative Computing & Communications (ICICC), New Delhi, India, 20–22 February 2020.
- Singh, J.; Joesph, M.H.; Jabbar, K.B.A. Rule-based chatbot for student enquiries. *J. Phys. Conf. Ser.* **2019**, *1228*, 012060.



29. Miura, C.; Chen, S.; Saiki, S.; Nakamura, M.; Yasuda, K. Assisting personalized healthcare of elderly people: Developing a rule-based virtual caregiver system using mobile chatbot. *Sensors* **2022**, *22*, 3829.
30. Lalwani, T.; Bhalotia, S.; Pal, A.; Rathod, V.; Bisen, S. Implementation of a Chatbot System using AI and NLP. *Int. J. Innov. Res. Comput. Sci. Technol. (IJIRCST)* **2018**, *6*, 1-5.
31. Kocaballi, A.B.; Sezgin, E.; Clark, L.; Carroll, J.M.; Huang, Y.; Huh-Yoo, J.; Kim, J.; Kocielnik, R.; Lee, Y.-C.; Mamykina, L.; et al. Design and evaluation challenges of conversational agents in health care and well-being: Selective review study. *J. Med. Internet Res.* **2022**, *24*, e38525.
32. Al-Sharafi, M.A.; Al-Emran, M.; Iranmanesh, M.; Al-Qaysi, N.; Iahad, N.A.; Arpac, I.I. Understanding the impact of knowledge management factors on the sustainable use of AI-based chatbots for educational purposes using a hybrid SEM-ANN approach. *Interact. Learn. Environ.* **2023**, *31*, 7491–7510.
33. Park, K.-R. Development of Artificial Intelligence-based Legal Counseling Chatbot System. *J. Korea Soc. Comput. Inf.* **2021**, *26*, 29–34.
34. Agarwal, R.; Wadhwa, M. Review of state-of-the-art design techniques for chatbots. *SN Comput. Sci.* **2020**, *1*, 246.
35. Stoilova, E. AI chatbots as a customer service and support tool. *ROBONOMICS J. Autom. Econ.* **2021**, *2*, 21.
36. Hildebrand, C.; Bergner, A. AI-driven sales automation: Using chatbots to boost sales. *NIM Mark. Intell. Rev.* **2019**, *11*, 36–41.
37. Patel, N.; Trivedi, S. Leveraging predictive modeling, machine learning personalization, NLP customer support, and AI chatbots to increase customer loyalty. *Empir. Quests Manag. Essences* **2020**, *3*, 1–24.
38. Maia, E.; Vieira, P.; Praça, I. Empowering Preventive Care with GECA Chatbot. *Healthcare* **2023**, *11*, 2532.
39. Doherty, D.; Curran, K. Chatbots for online banking services. *Web Intell.* **2019**, *17*, 327–342.
40. Mendoza, S.; Sánchez-Adame, L.M.; Urquiza-Yllescas, J.F.; González-Beltrán, B.A.; Decouchant, D. A model to develop chatbots for assisting the teaching and learning process. *Sensors* **2022**, *22*, 5532.
41. Nawaz, N.; Gomes, A.M. Artificial intelligence chatbots are new recruiters. *(IJACSA) Int. J. Adv. Comput. Sci. Appl.* **2019**, *10*, 1-5.
42. Lasek, M.; Jessa, S. Chatbots for customer service on hotels' websites. *Inf. Syst. Manag.* **2013**, *2*, 146–158.
43. García-Méndez, S.; De Arriba-Pérez, F.; González-Castaño, F.J.; Regueiro-Janeiro, J.A.; Gil-Castiñeira, F. Entertainment chatbot for the digital inclusion of elderly people without abstraction capabilities. *IEEE Access* **2021**, *9*, 75878–75891.
44. Cheng, Y.; Jiang, H. How do AI-driven chatbots impact user experience? Examining gratifications, perceived privacy risk, satisfaction, loyalty, and continued use. *J. Broadcast. Electron. Media* **2020**, *64*, 592–614.
45. de Sá Siqueira, M.A.; Müller, B.C.; Bosse, T. When do we accept mistakes from chatbots? The impact of human-like communication on user experience in chatbots that make mistakes. *Int. J. Hum. –Comput. Interact.* **2023**, *40*, 2862–2872.
46. Luttkholt, T. The Influence of Error Types on the User Experience of Chatbots. Master's Thesis, Radboud University Nijmegen, Nijmegen, the Netherlands, 2023.
47. Zamora, J. I'm sorry, dave, i'm afraid i can't do that: Chatbot perception and expectations. In Proceedings of the 5th International Conference on Human Agent Interaction, Gothenberg, Sweden, 4–7 December 2023; pp. 253–260.
48. Chen, H.; Liu, X.; Yin, D.; Tang, J. A survey on dialogue systems: Recent advances and new frontiers. *Acm Sigkdd Explor. Newsl.* **2017**, *19*, 25–35.
49. Radford, A.; Jozefowicz, R.; Sutskever, I. Learning to generate reviews and discovering sentiment. *arXiv* **2017**, arXiv:1704.01444.
50. Han, X.; Zhou, M.; Wang, Y.; Chen, W.; Yeh, T. Democratizing Chatbot Debugging: A Computational Framework for Evaluating and Explaining Inappropriate Chatbot Responses. In Proceedings of the 5th International Conference on Conversational User Interfaces, Eindhoven, The Netherlands, 19–21 July 2023; pp. 1–7.
51. Henderson, P.; Sinha, K.; Angelard-Gontier, N.; Ke, N.R.; Fried, G.; Lowe, R.; Pineau, J. Ethical challenges in data-driven dialogue systems. In Proceedings of the 2018 AAAI/ACM Conference on AI, Ethics, and Society, New Orleans, LA, USA, 2–3 February 2018; pp. 123–129.
52. Gehman, S.; Gururangan, S.; Sap, M.; Choi, Y.; Smith, N.A. Realltoxicityprompts: Evaluating neural toxic degeneration in language models. *arXiv* **2020**, arXiv:2009.11462.
53. Gabrilovich, E.; Markovitch, S. Wikipedia-based semantic interpretation for natural language processing. *J. Artif. Intell. Res.* **2009**, *34*, 443–498.
54. Dong, X.; Gabrilovich, E.; Heitz, G.; Horn, W.; Lao, N.; Murphy, K.; Zhang, W. Knowledge vault: A web-scale approach to probabilistic knowledge fusion. In Proceedings of the 20th ACM SIGKDD International Conference on Knowledge Discovery and Data Mining, New York, NY, USA, 24–27 August 2014; pp. 601–610.
55. Li, J.; Galley, M.; Brockett, C.; Gao, J.; Dolan, B. A diversity-promoting objective function for neural conversation models. *arXiv* **2015**, arXiv:1510.03055.
56. Shao, L.; Gouws, S.; Britz, D.; Goldie, A.; Strophe, B.; Kurzweil, R. Generating Long and Diverse Responses with Neural Conversation Models. **2016**. Available online: [https://www.researchgate.net/publication/312447509\\_Generating\\_Long\\_and\\_Diverse\\_Responses\\_with\\_Neural\\_Conversation\\_Models](https://www.researchgate.net/publication/312447509_Generating_Long_and_Diverse_Responses_with_Neural_Conversation_Models) (accessed on 1 April 2024).
57. Zheng, Y.; Chen, G.; Huang, M.; Liu, S.; Zhu, X. Personalized dialogue generation with diversified traits. *arXiv* **2019**, arXiv:1901.09672.
58. Zhang, S.; Dinan, E.; Urbanek, J.; Szlam, A.; Kiela, D.; Weston, J. Personalizing dialogue agents: I have a dog, do you have pets too? *arXiv* **2018**, arXiv:1801.07243.

59. Johnson, M.; Schuster, M.; Le, Q.V.; Krikun, M.; Wu, Y.; Chen, Z.; Thorat, N.; Viégas, F.; Wattenberg, M.; Corrado, G.; et al. Google's multilingual neural machine translation system: Enabling zero-shot translation. *Trans. Assoc. Comput. Linguist.* **2017**, *5*, 339–351.
60. Vulić, I.; Moens, M.-F. Monolingual and cross-lingual information retrieval models based on (bilingual) word embeddings. In Proceedings of the 38th International ACM SIGIR Conference on Research and Development in Information Retrieval, Santiago, Chile, 9–13 August 2015; pp. 363–372.
61. Alkasssi, H.; McFarlane, S.I. Artificial hallucinations in ChatGPT: Implications in scientific writing. *Cureus* **2023**, *15*, e35179.
62. Hannigan, T.R.; McCarthy, I.P.; Spicer, A. Beware of botshit: How to manage the epistemic risks of generative chatbots. *Bus. Horiz.* **2024**.
63. Maynez, J.; Narayan, S.; Bohnet, B.; McDonald, R. On faithfulness and factuality in abstractive summarization. *arXiv* **2020**, arXiv:2005.00661.
64. Ji, Z.; Lee, N.; Frieske, R.; Yu, T.; Su, D.; Xu, Y.; Ishii, E.; Bang, Y.J.; Madotto, A.; Fung, P. Survey of hallucination in natural language generation. *ACM Comput. Surv.* **2023**, *55*, 1–38.
65. Rane, Nitin, Enhancing Customer Loyalty through Artificial Intelligence (AI), Internet of Things (IoT), and Big Data Technologies: Improving Customer Satisfaction, Engagement, Relationship, and Experience (October 13, 2023). Available online: <https://ssrn.com/abstract=4616051> (accessed on 1 March 2024).
66. Hsu, C.-L.; Lin, J.C.-C. Understanding the user satisfaction and loyalty of customer service chatbots. *J. Retail. Consum. Serv.* **2023**, *71*, 103211.
67. Luger, E.; Sellen, A. Like Having a Really Bad PA" The Gulf between User Expectation and Experience of Conversational Agents. In Proceedings of the 2016 CHI Conference on Human Factors in Computing Systems, San Jose, CA, USA, 7–12 May 2016; pp. 5286–5297.
68. Cassell, J.; Bickmore, T. External manifestations of trustworthiness in the interface. *Commun. ACM* **2000**, *43*, 50–56.
69. Lee, J.D.; See, K.A. Trust in automation: Designing for appropriate reliance. *Hum. Factors* **2004**, *46*, 50–80.
70. Ho, R.C. Chatbot for online customer service: Customer engagement in the era of artificial intelligence. In *Impact of Globalization and Advanced Technologies on Online Business Models*; IGI Global: Hershey, PA, USA, 2021; pp. 16–31.
71. Galitsky, B.; Galitsky, B.; Goldberg, S. Explainable machine learning for chatbots. In *Developing Enterprise Chatbots: Learning Linguistic Structures*; Springer: Berlin/Heidelberg, Germany, 2019; pp. 53–83.
72. Suta, P.; Lan, X.; Wu, B.; Mongkolnam, P.; Chan, J.H. An overview of machine learning in chatbots. *Int. J. Mech. Eng. Robot. Res.* **2020**, *9*, 502–510.
73. Yoo, S.; Jeong, O. An intelligent chatbot utilizing BERT model and knowledge graph. *J. Soc. e-Bus. Stud.* **2020**, *24*, 87–98.
74. Kondurkar, I.; Raj, A.; Lakshmi, D. Modern Applications With a Focus on Training ChatGPT and GPT Models: Exploring Generative AI and NLP. In *Advanced Applications of Generative AI and Natural Language Processing Models*; IGI Global: Hershey, PA, USA, 2024; pp. 186–227.
75. Yenduri, G.; Srivastava, G.; Maddikunta, P.K.R.; Jhaveri, R.H.; Wang, W.; Vasilakos, A.V.; Gadekallu, T.R. Generative pre-trained transformer: A comprehensive review on enabling technologies, potential applications, emerging challenges, and future directions. *arXiv* **2023**, arXiv:2305.10435.
76. Kamphaug, Å.; Granmo, O.-C.; Goodwin, M.; Zadorozhny, V.I. Towards open domain chatbots—A gru architecture for data driven conversations. In Proceedings of the Internet Science: INSCI 2017 International Workshops, IFIN, DATA ECONOMY, DSI, and CONVERSATIONS, Thessaloniki, Greece, 22 November 2017; Revised Selected Papers 4; Springer: Berlin/Heidelberg, Germany, 2018; pp. 213–222.
77. Galitsky, B.; Galitsky, B. Chatbot components and architectures. *Developing Enterprise Chatbots: Learning Linguistic Structures*; Springer: Berlin/Heidelberg, Germany, 2019; pp. 13–51.
78. Hussain, S.; Sianaki, O.A.; Ababneh, N. A survey on conversational agents/chatbots classification and design techniques. In *Web, Artificial Intelligence and Network Applications: Proceedings of the Workshops of the 33rd International Conference on Advanced Information Networking and Applications (WAINA-2019), Matsue, Japan, 27–29 March 2019*; Springer: Berlin/Heidelberg, Germany, 2019; pp. 946–956.
79. Wang, R.; Wang, J.; Liao, Y.; Wang, J. Supervised machine learning chatbots for perinatal mental healthcare. In Proceedings of the 2020 International Conference on Intelligent Computing and Human-Computer Interaction (ICHCI), Sanya, China, 4–6 December 2020; IEEE: Piscataway, NJ, USA; pp. 378–383.
80. Cuayáhuitl, H.; Lee, D.; Ryu, S.; Cho, Y.; Choi, S.; Indurthi, S.; Yu, S.; Choi, H.; Hwang, I.; Kim, J. Ensemble-based deep reinforcement learning for chatbots. *Neurocomputing* **2019**, *366*, 118–130.
81. Jadhav, H.M.; Mulani, A.; Jadhav, M.M. Design and development of chatbot based on reinforcement learning. In *Machine Learning Algorithms for Signal and Image Processing*; Wiley-ISTE: Hoboken, NJ, USA, 2022; pp. 219–229.
82. El-Ansari, A.; Beni-Hssane, A. Sentiment analysis for personalized chatbots in e-commerce applications. *Wirel. Pers. Commun.* **2023**, *129*, 1623–1644.
83. Svikhnushina, E.; Pu, P. PEACE: A model of key social and emotional qualities of conversational chatbots. *ACM Trans. Interact. Intell. Syst.* **2022**, *12*, 1–29.
84. Majid, R.; Santoso, H.A. Conversations sentiment and intent categorization using context RNN for emotion recognition. In Proceedings of the 2021 7th International Conference on Advanced Computing and Communication Systems (ICACCS), Coimbatore, India, 19–20 March 2021; IEEE: Piscataway, NJ, USA; pp. 46–50.

85. Kasneci, E.; Sessler, K.; Küchemann, S.; Bannert, M.; Dementieva, D.; Fischer, F.; Gasser, U.; Groh, G.; Günemann, S.; Hüllermeier, E.; et al. ChatGPT for good? On opportunities and challenges of large language models for education. *Learn. Individ. Differ.* **2023**, *103*, 102274.
86. Abd-Alrazaq, A.; Safi, Z.; Alajlani, M.; Warren, J.; Househ, M.; Denecke, K. Technical metrics used to evaluate health care chatbots: Scoping review. *J. Med. Internet Res.* **2020**, *22*, e18301.
87. Chaves, A.P.; Gerosa, M.A. How should my chatbot interact? A survey on social characteristics in human–chatbot interaction design. *Int. J. Hum. Comput. Interact.* **2021**, *37*, 729–758.
88. Rhim, J.; Kwak, M.; Gong, Y.; Gweon, G. Application of humanization to survey chatbots: Change in chatbot perception, interaction experience, and survey data quality. *Comput. Human Behav.* **2022**, *126*, 107034.
89. Xu, A.; Liu, Z.; Guo, Y.; Sinha, V.; Akkiraju, R. A new chatbot for customer service on social media. In Proceedings of the 2017 CHI Conference on Human Factors in Computing Systems, Denver, CO, USA, 6–11 May 2017; pp. 3506–3510.
90. Chang, D.H.; Lin, M.P.-C.; Hajian, S.; Wang, Q.Q. Educational Design Principles of Using AI Chatbot That Supports Self-Regulated Learning in Education: Goal Setting, Feedback, and Personalization. *Sustainability* **2023**, *15*, 12921.
91. Sutton, R.S.; Barto, A.G. *Reinforcement learning: An introduction*; MIT Press: Cambridge, MA, USA, 2018.
92. Abdellatif, A.; Badran, K.; Costa, D.E.; Shihab, E. A comparison of natural language understanding platforms for chatbots in software engineering. *IEEE Trans. Softw. Eng.* **2021**, *48*, 3087–3102.
93. Young, T.; Hazarika, D.; Poria, S.; Cambria, E. Recent trends in deep learning based natural language processing. *IEEE Comput. Intell. Mag.* **2018**, *13*, 55–75.
94. Park, S.; Jung, Y.; Kang, H. Effects of Personalization and Types of Interface in Task-oriented Chatbot. *J. Conver. Cult. Technol.* **2021**, *7*, 595–607.
95. Shi, W.; Wang, X.; Oh, Y.J.; Zhang, J.; Sahay, S.; Yu, Z. Effects of persuasive dialogues: Testing bot identities and inquiry strategies. In Proceedings of the 2020 CHI Conference on Human Factors in Computing Systems, Honolulu, HI, USA, 25–30 April 2020; pp. 1–13.
96. Radford, A.; Wu, J.; Child, R.; Luan, D.; Amodei, D.; Sutskever, I. Language models are unsupervised multitask learners. *OpenAI Blog* **2019**, *1*, 9.
97. Ait-Mlouk, A.; Jiang, L. KBot: A Knowledge graph based chatBot for natural language understanding over linked data. *IEEE Access* **2020**, *8*, 149220–149230.
98. Alaaeldin, R.; Asfoura, E.; Kassem, G.; Abdel-Haq, M.S. Developing Chatbot System To Support Decision Making Based on Big Data Analytics. *J. Manag. Inf. Decis. Sci.* **2021**, *24*, 1–15.
99. Bhagwat, V.A. Deep learning for chatbots. Master’s Thesis, San Jose State University, San Jose, CA, USA, 2018.
100. Denecke, K.; Abd-Alrazaq, A.; Househ, M.; Warren, J. Evaluation metrics for health chatbots: A Delphi study. *Methods Inf. Med.* **2021**, *60*, 171–179.
101. Jannach, D.; Manzoor, A.; Cai, W.; Chen, L. A survey on conversational recommender systems. *ACM Comput. Surv. (CSUR)* **2021**, *54*, 1–36.
102. Følstad, A.; Taylor, C. Investigating the user experience of customer service chatbot interaction: A framework for qualitative analysis of chatbot dialogues. *Qual. User Exp.* **2021**, *6*, 6.
103. Akhtar, M.; Neidhardt, J.; Werthner, H. The potential of chatbots: Analysis of chatbot conversations. In 2019 IEEE 21st Conference on Business Informatics (CBI), Moscow, Russia, 15–17 July 2019; IEEE: Piscataway, NJ, USA, 2019; pp. 397–404.
104. Rebelo, H.D.; de Oliveira, L.A.; Almeida, G.M.; Sotomayor, C.A.; Magalhães, V.S.; Rochocz, G.L. Automatic update strategy for real-time discovery of hidden customer intents in chatbot systems. *Knowl. -Based Syst.* **2022**, *243*, 108529.
105. Panda, S.; Chakravarty, R. Adapting intelligent information services in libraries: A case of smart AI chatbots. *Libr. Hi Tech News* **2022**, *39*, 12–15.
106. Yorita, A.; Egerton, S.; Oakman, J.; Chan, C.; Kubota, N. Self-adapting Chatbot personalities for better peer support. In Proceedings of the 2019 IEEE International Conference on Systems, Man and Cybernetics (SMC), Bari, Italy, 6–9 October 2019; IEEE: Piscataway, NJ, USA; pp. 4094–4100.
107. Vijayaraghavan, V.; Cooper, J.B. Algorithm inspection for chatbot performance evaluation. *Procedia Comput. Sci.* **2020**, *171*, 2267–2274.
108. Han, X.; Zhou, M.; Turner, M.J.; Yeh, T. Designing effective interview chatbots: Automatic chatbot profiling and design suggestion generation for chatbot debugging. In Proceedings of the 2021 CHI Conference on Human Factors in Computing Systems, Online Virtual, 8–13 May 2021; pp. 1–15.
109. Shumanov, M.; Johnson, L. Making conversations with chatbots more personalized. *Comput. Hum. Behav.* **2021**, *117*, 106627.
110. Qian, H.; Dou, Z. Topic-Enhanced Personalized Retrieval-Based Chatbot. In Proceedings of the European Conference on Information Retrieval, Dublin, Ireland, 2–6 April 2023; Springer: Berlin/Heidelberg, Germany, 2023; pp. 79–93.
111. Wang, H.-N.; Liu, N.; Zhang, Y. Deep reinforcement learning: A survey. *Front. Inf. Technol. Electron. Eng.* **2020**, *21*, 1726–1744.
112. Serban, I.V.; Cheng, G.S. A deep reinforcement learning chatbot. *arXiv* **2017**, arXiv:1709.02349.
113. Liu, J.; Pan, F.; Luo, L. Gochat: Goal-oriented chatbots with hierarchical reinforcement learning. In Proceedings of the 43rd International ACM SIGIR Conference on Research and Development in Information Retrieval, Virtual Event, 25–30 July 2020; pp. 1793–1796.
114. Li, J.; Monroe, W.; Ritter, A.; Galley, M.; Gao, J.; Jurafsky, D. Deep reinforcement learning for dialogue generation. *arXiv* **2016**, arXiv:1606.01541.

115. Jaques, N.; Ghandeharioun, A.; Shen, J.H.; Ferguson, C.; Lapedriza, A.; Jones, N.; Picard, R. Way off-policy batch deep reinforcement learning of implicit human preferences in dialog. *arXiv* **2019**, arXiv:1907.00456.
116. Lapan, M. *Deep Reinforcement Learning Hands-On: Apply Modern RL Methods to Practical Problems of Chatbots, Robotics, Discrete Optimization, Web Automation, and More*; Packt Publishing Ltd.: Birmingham, UK, 2020.
117. Liu, C.; Jiang, J.; Xiong, C.; Yang, Y.; Ye, J. Towards building an intelligent chatbot for customer service: Learning to respond at the appropriate time. In Proceedings of the 26th ACM SIGKDD International Conference on Knowledge Discovery & Data Mining, Virtual Event, 23–27 August 2020; pp. 3377–3385.
118. Gunel, B.; Du, J.; Conneau, A.; Stoyanov, V. Supervised contrastive learning for pre-trained language model fine-tuning. *arXiv* **2020**, arXiv:2011.01403.
119. Uprety, S.P.; Jeong, S.R. The Impact of Semi-Supervised Learning on the Performance of Intelligent Chatbot System. *Comput. Mater. Contin.* **2022**, *71*, 3937–3952.
120. Luo, B.; Lau, R.Y.; Li, C.; Si, Y.W. A critical review of state-of-the-art chatbot designs and applications. *Wiley Interdiscip. Rev. Data Min. Knowl. Discov.* **2022**, *12*, e1434.
121. Kulkarni, M.; Kim, K.; Garera, N.; Trivedi, A. Label efficient semi-supervised conversational intent classification. In Proceedings of the 61st Annual Meeting of the Association for Computational Linguistics (Volume 5: Industry Track), Toronto, Canada, 10–12 July 2023; pp. 96–102.
122. Prabhu, S.; Brahma, A.K.; Misra, H. Customer Support Chat Intent Classification using Weak Supervision and Data Augmentation. In Proceedings of the 5th Joint International Conference on Data Science & Management of Data (9th ACM IKDD CODS and 27th COMAD), Bangalore, India, 8–10 January 2022; pp. 144–152.
123. Raisi, E. Weakly Supervised Machine Learning for Cyberbullying Detection. Ph.D. Thesis, Virginia Tech., Blacksburg, VA, USA, 2019.
124. Ahmed, M.; Khan, H.U.; Munir, E.U. Conversational ai: An explication of few-shot learning problem in transformers-based chatbot systems. *IEEE Trans. Comput. Soc. Syst.* **2023**, *11*, 1888–1906.
125. Tavares, D. Zero-Shot Generalization of Multimodal Dialogue Agents. In Proceedings of the 30th ACM International Conference on Multimedia, Lisboa, Portugal, 10–14 October 2022; pp. 6935–6939.
126. Chai, Y.; Liu, G.; Jin, Z.; Sun, D. How to keep an online learning chatbot from being corrupted. In Proceedings of the 2020 International Joint Conference on Neural Networks (IJCNN), Glasgow, UK, 19–24 July 2020; IEEE: Piscataway, NJ, USA; pp. 1–8.
127. Madotto, A.; Lin, Z.; Wu, C.-S.; Fung, P. Personalizing dialogue agents via meta-learning. In Proceedings of the 57th Annual Meeting of the Association for Computational Linguistics, Florence, Italy, 28 July–2 August 2019; pp. 5454–5459.
128. Dingliwal, S.; Gao, B.; Agarwal, S.; Lin, C.-W.; Chung, T.; Hakkani-Tur, D. Few shot dialogue state tracking using meta-learning. *arXiv* **2021**, arXiv:2101.06779.
129. Bird, J.J.; Ekárt, A.; Faria, D.R. Chatbot Interaction with Artificial Intelligence: Human data augmentation with T5 and language transformer ensemble for text classification. *J. Ambient. Intell. Humaniz. Comput.* **2023**, *14*, 3129–3144.
130. Paul, A.; Latif, A.H.; Adnan, F.A.; Rahman, R.M. Focused domain contextual AI chatbot framework for resource poor languages. *J. Inf. Telecommun.* **2019**, *3*, 248–269.
131. Gallo, S.; Malizia, A.; Paternò, F. Towards a Chatbot for Creating Trigger-Action Rules based on ChatGPT and Rasa. In Proceedings of the International Symposium on End-User Development (IS-EUD), Cagliari, Italy, 6–8 June 2023.
132. Gupta, A.; Zhang, P.; Lalwani, G.; Diab, M. Casa-nlu: Context-aware self-attentive natural language understanding for task-oriented chatbots. *arXiv* **2019**, arXiv:1909.08705.
133. Ilievski, V.; Musat, C.; Hossmann, A.; Baeriswyl, M. Goal-oriented chatbot dialog management bootstrapping with transfer learning. *arXiv* **2018**, arXiv:1802.00500.
134. Shi, N.; Zeng, Q.; Lee, R. The design and implementation of language learning chatbot with xai using ontology and transfer learning. *arXiv* **2020**, arXiv:2009.13984.
135. Syed, Z.H.; Trabelsi, A.; Helbert, E.; Bailleau, V.; Muths, C. Question answering chatbot for troubleshooting queries based on transfer learning. *Procedia Comput. Sci.* **2021**, *192*, 941–950.
136. Zhang, W.N.; Zhu, Q.; Wang, Y.; Zhao, Y.; Liu, T. Personalized response generation via domain adaptation. In Proceedings of the 40th International ACM SIGIR Conference on Research and Development in Information Retrieval, Tokyo, Japan, 7–11, August 2017; pp. 1021–1024.
137. Lee, C.-J.; Croft, W.B. Generating queries from user-selected text. In Proceedings of the 4th Information Interaction in Context Symposium, Nijmegen, the Netherlands, 21–24 August 2012; pp. 100–109.
138. Gnewuch, U.; Morana, S.; Hinz, O.; Kellner, R.; Maedche, A. More than a bot? The impact of disclosing human involvement on customer interactions with hybrid service agents. *Inf. Syst. Res.* **2023**, pp. 1–20.
139. Wu, X.; Xiao, L.; Sun, Y.; Zhang, J.; Ma, T.; He, L. A survey of human-in-the-loop for machine learning. *Future Gener. Comput. Syst.* **2022**, *135*, 364–381.
140. Wiethof, C.; Rooks, T.; Bittner, E.A. Gamifying the human-in-the-loop: Toward increased motivation for training AI in customer service. In Proceedings of the International Conference on Human-Computer Interaction, Virtual Event, 1–26 June 2022; Springer: Berlin/Heidelberg, Germany, pp. 100–117.
141. Melo dos Santos, G. Adaptive Human-Chatbot Interactions: Contextual Factors, Variability Design and Levels of Automation. 2023. Available online: <https://uwspace.uwaterloo.ca/handle/10012/20139> (accessed on 1 March 2024).

142. Wu, J.; Huang, Z.; Hu, Z.; Lv, C. Toward human-in-the-loop AI: Enhancing deep reinforcement learning via real-time human guidance for autonomous driving. *Engineering* **2023**, *21*, 75–91.
143. Wardhana, A.K.; Ferdiana, R.; Hidayah, I. Empathetic chatbot enhancement and development: A literature review. In 2021 International Conference on Artificial Intelligence and Mechatronics Systems (AIMS), Jakarta, Indonesia, 28–30 April 2021; IEEE: Piscataway, NJ, USA; pp. 1–6.
144. Chen, F. Human-AI cooperation in education: Human in loop and teaching as leadership. *J. Educ. Technol. Innov.* **2022**, *2*, 1.
145. Barletta, V.S.; Caivano, D.; Colizzi, L.; Dimauro, G.; Piattini, M. Clinical-chatbot AHP evaluation based on “quality in use” of ISO/IEC 25010. *Int. J. Med. Inform.* **2023**, *170*, 104951.
146. Gronsund, T.; Aanestad, M. Augmenting the algorithm: Emerging human-in-the-loop work configurations. *J. Strateg. Inf. Syst.* **2020**, *29*, 101614.
147. Rayhan, R.; Rayhan, S. AI and human rights: Balancing innovation and privacy in the digital age. *Comput. Sci. Eng.* **2023**, *2*, 353964. 10.13140/RG.2.2.35394.56001.
148. Fan, H.; Han, B.; Gao, W. (Im) Balanced customer-oriented behaviors and AI chatbots’ Efficiency–Flexibility performance: The moderating role of customers’ rational choices. *J. Retail. Consum. Serv.* **2022**, *66*, 102937.
149. Ngai, E.W.; Lee, M.C.; Luo, M.; Chan, P.S.; Liang, T. An intelligent knowledge-based chatbot for customer service. *Electron. Commer. Res. Appl.* **2021**, *50*, 101098.
150. Pandey, S.; Sharma, S.; Wazir, S. Mental healthcare chatbot based on natural language processing and deep learning approaches: Ted the therapist. *Int. J. Inf. Technol.* **2022**, *14*, 3757–3766.
151. Kulkarni, C.S.; Bhavsar, A.U.; Pingale, S.R.; Kumbhar, S.S. BANK CHAT BOT—an intelligent assistant system using NLP and machine learning. *Int. Res. J. Eng. Technol.* **2017**, *4*, 2374–2377.
152. Argal, A.; Gupta, S.; Modi, A.; Pandey, P.; Shim, S.; Choo, C. Intelligent travel chatbot for predictive recommendation in echo platform. In Proceedings of the 2018 IEEE 8th Annual Computing and Communication Workshop and Conference (CCWC), Las Vegas, NV, USA, 8–10 January 2018; IEEE: Piscataway, NJ, USA; pp. 176–183.
153. Abu-Rasheed, H.; Abdulsalam, M.H.; Weber, C.; Fathi, M. Supporting Student Decisions on Learning Recommendations: An LLM-Based Chatbot with Knowledge Graph Contextualization for Conversational Explainability and Mentoring. *arXiv* **2024**, arXiv:2401.08517.
154. Kohnke, L. A pedagogical chatbot: A supplemental language learning tool. *RELC J.* **2023**, *54*, 828–838.
155. Haristiani, N. Artificial Intelligence (AI) chatbot as language learning medium: An inquiry. *J. Phys. Conf. Ser.* **2019**, *1387*, 012020.
156. Tamayo, P.A.; Herrero, A.; Martín, J.; Navarro, C.; Tránchez, J.M. Design of a chatbot as a distance learning assistant. *Open Prax.* **2020**, *12*, 145–153.
157. McTear, M. *Conversational ai: Dialogue Systems, Conversational Agents, and Chatbots*; Springer Nature: Berlin/Heidelberg, Germany, 2022.
158. Braggaar, A.; Verhagen, J.; Martijn, G.; Liebrecht, C. Conversational repair strategies to cope with errors and breakdowns in customer service chatbot conversations. In Proceedings of the Conversations: Workshop on Chatbot Research, Oslo, Norway, 22–23 November 2023.
159. Fang, K.Y.; Bjerling, H. Development of an interactive Messenger chatbot for medication and health supplement reminders. In Proceedings of the 36th National Conference Health Information Management: Celebrating, Cape Town, South Africa, 20–23 October 2019; Volume 70, p. 51.
160. Griffin, A.C.; Khairat, S.; Bailey, S.C.; Chung, A.E. A chatbot for hypertension self-management support: User-centered design, development, and usability testing. *JAMIA Open* **2023**, *6*, ooad073.
161. Alt, M.-A.; Vizeli, I.; Săplăcan, Z. Banking with a chatbot—A study on technology acceptance. *Stud. Univ. Babeş-Bolyai Oeconomica* **2021**, *66*, 13–35.
162. Ukpabi, D.C.; Aslam, B.; Karjaluo, H. Chatbot adoption in tourism services: A conceptual exploration. In *Robots, Artificial Intelligence, and Service Automation in Travel, Tourism and Hospitality*; Emerald Publishing Limited: Bingley, UK, 2019; pp. 105–121.
163. Ji, H.; Han, I.; Ko, Y. A systematic review of conversational AI in language education: Focusing on the collaboration with human teachers. *J. Res. Technol. Educ.* **2023**, *55*, 48–63.
164. Heller, B.; Proctor, M.; Mah, D.; Jewell, L.; Cheung, B. Freudbot: An investigation of chatbot technology in distance education. In *EdMedia+ Innovate Learning*; Association for the Advancement of Computing in Education (AACE): Asheville, NC, USA, 2005; pp. 3913–3918.
165. Huang, W.; Hew, K.F.; Fryer, L.K. Chatbots for language learning—Are they really useful? A systematic review of chatbot-supported language learning. *J. Comput. Assist. Learn.* **2022**, *38*, 237–257.
166. Kim, H.; Yang, H.; Shin, D.; Lee, J.H. Design principles and architecture of a second language learning chatbot. *Lang. Learn. Technol.* **2022**, *26*, 1–18.
167. Li, L.; Lee, K.Y.; Emokpae, E.; Yang, S.-B. What makes you continuously use chatbot services? Evidence from chinese online travel agencies. *Electron. Mark.* **2021**, *31*, 575–599.
168. Shafi, P.M.; Jawalkar, G.S.; Kadam, M.A.; Ambawale, R.R.; Bankar, S.V. AI—Assisted chatbot for e-commerce to address selection of products from multiple products. In *Internet of Things, Smart Computing and Technology: A Roadmap Ahead*; Springer: Berlin/Heidelberg, Germany, 2020; pp. 57–80.

169. Sundar, S.S.; Bellur, S.; Oh, J.; Jia, H.; Kim, H.-S. Theoretical importance of contingency in human-computer interaction: Effects of message interactivity on user engagement. *Commun. Res.* **2016**, *43*, 595–625.
170. Janssen, A.; Cardona, D.R.; Passlick, J.; Breitner, M.H. How to Make chatbots productive—A user-oriented implementation framework. *Int. J. Hum. Comput. Stud.* **2022**, *168*, 102921.
171. Rakshit, S.; Clement, N.; Vajjhala, N.R. Exploratory review of applications of machine learning in finance sector. In *Advances in Data Science and Management: Proceedings of ICDSM 2021*; Springer Verlag: Singapore, 2022; pp. 119–125.
172. Le, A.-C. *Improving Chatbot Responses with Context and Deep Seq2Seq Reinforcement Learning*; Springer Verlag: Singapore, 2023.
173. Wang, J.; Oyama, S.; Kurihara, M.; Kashima, H. Learning an accurate entity resolution model from crowdsourced labels. In Proceedings of the 8th International Conference on Ubiquitous Information Management and Communication, 2014, Belfast, UK, 9–11 January 2014; pp. 1–8.
174. Maskat, R.; Paton, N.W.; Embury, S.M. Pay-as-you-go configuration of entity resolution. *Transactions on Large-Scale Data-and Knowledge-Centered Systems XXIX.*; Springer: Berlin/Heidelberg, Germany, 2016; pp. 40–65.
175. Budd, S.; Robinson, E.C.; Kainz, B. A survey on active learning and human-in-the-loop deep learning for medical image analysis. *Med. Image Anal.* **2021**, *71*, 102062.
176. Selamat, M.A.; Windasari, N.A. Chatbot for SMEs: Integrating customer and business owner perspectives. *Technol. Soc.* **2021**, *66*, 101685.
177. Heo, M.; Lee, K.J. Chatbot as a new business communication tool: The case of naver talktalk. *Bus. Commun. Res. Pract.* **2018**, *1*, 41–45.
178. Cui, L.; Huang, S.; Wei, F.; Tan, C.; Duan, C.; Zhou, M. Superagent: A customer service chatbot for e-commerce websites. In Proceedings of ACL 2017, System Demonstrations, Vancouver, Canada, 30 July–4 August 2017; pp. 97–102.
179. Abdellatif, A.; Costa, D.; Badran, K.; Abdalkareem, R.; Shihab, E. Challenges in chatbot development: A study of stack overflow posts. In Proceedings of the 17th International Conference on Mining Software Repositories, Seoul, Republic of Korea, 29–30 June 2020; pp. 174–185.
180. Hasal, M.; Nowaková, J.; Saghair, K.A.; Abdulla, H.; Snášel, V.; Ogiela, L. Chatbots: Security, privacy, data protection, and social aspects. *Concurr. Comput. Pract. Exp.* **2021**, *33*, e6426.
181. Atkins, S.; Badrie, I.; van Otterloo, S. Applying Ethical AI Frameworks in practice: Evaluating conversational AI chatbot solutions. *Comput. Soc. Res. J.* **2021**, *1*, qxom4114.
182. Tamimi, A. Chatting with Confidence: A Review on the Impact of User Interface, Trust, and User Experience in Chatbots, and a Proposal of a Redesigned Prototype. 2023. Available online: <https://hdl.handle.net/10365/33240> (accessed on 1 February 2024).
183. Valencia, O.A.G.; Suppadungsuk, S.; Thongprayoon, C.; Miao, J.; Tangpanithandee, S.; Craici, I.M.; Cheungpasitporn, W. Ethical implications of chatbot utilization in nephrology. *J. Pers. Med.* **2023**, *13*, 1363.
184. Dwivedi, Y.K.; Kshetri, N.; Hughes, L.; Slade, E.L.; Jeyaraj, A.; Kar, A.K. “So what if ChatGPT wrote it?” Multidisciplinary perspectives on opportunities, challenges and implications of generative conversational AI for research, practice and policy. *Int. J. Inf. Manag.* **2023**, *71*, 102642.
185. Alshurafat, H. The usefulness and challenges of chatbots for accounting professionals: Application on ChatGPT. 2023. Available online: [https://papers.ssrn.com/sol3/papers.cfm?abstract\\_id=4345921](https://papers.ssrn.com/sol3/papers.cfm?abstract_id=4345921) (accessed on 1 February 2024).
186. Jiang, Y.; Yang, X.; Zheng, T. Make chatbots more adaptive: Dual pathways linking human-like cues and tailored response to trust in interactions with chatbots. *Comput. Human Behav.* **2023**, *138*, 107485.
187. Jeong, H.; Yoo, J.H.; Han, O. Next-Generation Chatbots for Adaptive Learning: A proposed Framework. *J. Internet Comput. Serv.* **2023**, *24*, 37–45.
188. Wang, D.; Fang, H. An adaptive response matching network for ranking multi-turn chatbot responses. In Proceedings of the Natural Language Processing and Information Systems: 25th International Conference on Applications of Natural Language to Information Systems, NLDB 2020, Saarbrücken, Germany, 24–26 June 2020; Proceedings 25; Springer: Berlin/Heidelberg, Germany, 2020; pp. 239–251.
189. Han, S.; Lee, M.K. FAQ chatbot and inclusive learning in massive open online courses. *Comput. Educ.* **2022**, *179*, 104395.
190. Gondaliya, K.; Butakov, S.; Zavarisky, P. SLA as a mechanism to manage risks related to chatbot services. In Proceedings of the 2020 IEEE 6th Intl Conference on Big Data Security on Cloud (BigDataSecurity), IEEE Intl Conference on High Performance and Smart Computing (HPSC) and IEEE Intl Conference on Intelligent Data and Security (IDS), New York, NY, USA, 25–27 May 2020; IEEE: Piscataway, NJ, USA; pp. 235–240.
191. Park, D.-M.; Jeong, S.-S.; Seo, Y.-S. Systematic review on chatbot techniques and applications. *J. Inf. Process. Syst.* **2022**, *18*, 26–47.
192. Jeon, J.; Lee, S.; Choe, H. Beyond ChatGPT: A conceptual framework and systematic review of speech-recognition chatbots for language learning. *Comput. Educ.* **2023**, *206*, 104898.
193. Bilquise, G.; Ibrahim, S.; Shaalan, K. Emotionally intelligent chatbots: A systematic literature review. *Hum. Behav. Emerg. Technol.* **2022**, *2022*, 9601630.
194. Hilken, T.; Chylinski, M.; de Ruyter, K.; Heller, J.; Keeling, D.I. Exploring the frontiers in reality-enhanced service communication: From augmented and virtual reality to neuro-enhanced reality. *J. Serv. Manag.* **2022**, *33*, 657–674.
195. Gao, M.; Liu, X.; Xu, A.; Akkiraju, R. Chat-XAI: A new chatbot to explain artificial intelligence. In *Intelligent Systems and Applications: Proceedings of the 2021 Intelligent Systems Conference (IntelliSys) Volume 3*; Springer: Berlin/Heidelberg, Germany, 2022; pp. 125–134.

196. Kapočiūtė-Dzikiene, J. A domain-specific generative chatbot trained from little data. *Appl. Sci.* **2020**, *10*, 2221.
197. Golizadeh, N.; Golizadeh, M.; Forouzanfar, M. Adversarial grammatical error generation: Application to Persian language. *Int. J. Nat. Lang. Comput.* **2022**, *11*, 19–28.
198. Jain, U.; Zhang, Z.; Schwing, A.G. Creativity: Generating diverse questions using variational autoencoders. In Proceedings of the IEEE Conference on Computer Vision and Pattern Recognition, Honolulu, HI, USA, 21–26 July 2017; pp. 6485–6494.
199. Liu, M.; Bao, X.; Liu, J.; Zhao, P.; Shen, Y. Generating emotional response by conditional variational auto-encoder in open-domain dialogue system. *Neurocomputing* **2021**, *460*, 106–116.
200. Ho, J.; Jain, A.; Abbeel, P. Denoising diffusion probabilistic models. *Adv. Neural Inf. Process. Syst.* **2020**, *33*, 6840–6851.
201. Dhariwal, P.; Nichol, A. Diffusion models beat gans on image synthesis. *Adv. Neural Inf. Process. Syst.* **2021**, *34*, 8780–8794.
202. Bengesi, S.; El-Sayed, H.; Sarker, M.K.; Houkpati, Y.; Irungu, J.; Oladunni, T. Advancements in Generative AI: A Comprehensive Review of GANs, GPT, Autoencoders, Diffusion Model, and Transformers. *IEEE Access*, **2024**, *12*, 1.
203. Varitimadiis, S.; Kotis, K.; Pittou, D.; Konstantakis, G. Graph-based conversational AI: Towards a distributed and collaborative multi-chatbot approach for museums. *Appl. Sci.* **2021**, *11*, 9160.
204. Preskill, J. Quantum computing 40 years later. In *Feynman Lectures on Computation*; CRC Press: Boca Raton, FL, USA, 2023; pp. 193–244.
205. Aragonés-Soria, Y.; Oriol, M. C4Q: A Chatbot for Quantum. *arXiv* **2024**, arXiv:2402.01738.
206. Jalali, N.A.; Chen, H. Comprehensive Framework for Implementing Blockchain-enabled Federated Learning and Full Homomorphic Encryption for Chatbot security System. *Clust. Comput.* **2024**. Pp. 1–24.
207. Hamsath Mohammed Khan, R.: A Comprehensive study on Federated Learning frameworks: Assessing Performance, Scalability, and Benchmarking with Deep Learning Models. Master’s Thesis, University of Skövde, Skövde, Sweden, 2023.
208. Drigas, A.; Mitsea, E.; Skianis, C. Meta-learning: A Nine-layer model based on metacognition and smart technologies. *Sustainability* **2023**, *15*, 1668.
209. Kulkarni, U.; SM, M.; Hallyal, R.; Sulibhavi, P.; Guggari, S.; Shanbhag, A.R. Optimisation of deep neural network model using Reptile meta learning approach. *Cogn. Comput. Syst.* **2023**.pp. 1–8.
210. Yamamoto, K.; Inoue, K.; Kawahara, T. Character expression for spoken dialogue systems with semi-supervised learning using Variational Auto-Encoder. *Comput. Speech Lang.* **2023**, *79*, 101469.
211. Fijačko, N.; Prosen, G.; Abella, B.S.; Metličar, Š.; Štiglic, G. Can novel multimodal chatbots such as Bing Chat Enterprise, ChatGPT-4 Pro, and Google Bard correctly interpret electrocardiogram images? *Resuscitation* **2023**, *193*, 110009.
212. Das, A.; Kottur, S.; Gupta, K.; Singh, A.; Yadav, D.; Moura, J.M. Visual dialog. In Proceedings of the IEEE Conference on Computer Vision and Pattern Recognition, Honolulu, HI, USA, 21–26 July 2017; pp. 326–335.
213. Tran, Q.-D.L.; Le, A.-C. Exploring bi-directional context for improved chatbot response generation using deep reinforcement learning. *Appl. Sci.* **2023**, *13*, 5041.
214. Cai, W.; Grossman, J.; Lin, Z.J.; Sheng, H.; Wei, J.T.-Z.; Williams, J.J.; Goel, S. Bandit algorithms to personalize educational chatbots. *Mach. Learn.* **2021**, *110*, 2389–2418.
215. Liu, W.; He, Q.; Li, Z.; Li, Y. Self-learning modeling in possibilistic model checking. *IEEE Trans. Emerg. Top. Comput. Intell.* **2023**. Vol 8, 264–278.
216. Lee, Y.-J.; Roger, P. Cross-platform language learning: A spatial perspective on narratives of language learning across digital platforms. *System* **2023**, *118*, 103145.

**Disclaimer/Publisher’s Note:** The statements, opinions and data contained in all publications are solely those of the individual author(s) and contributor(s) and not of MDPI and/or the editor(s). MDPI and/or the editor(s) disclaim responsibility for any injury to people or property resulting from any ideas, methods, instructions or products referred to in the content.