

Supplementary Materials: Article The Use of a Two-Dimensional Electrical Resistivity Tomography (2D-ERT) As a Technique for Cadmium Determination in Cacao Crop Soils

Daniel Bravo and Javier Benavides-Eraza

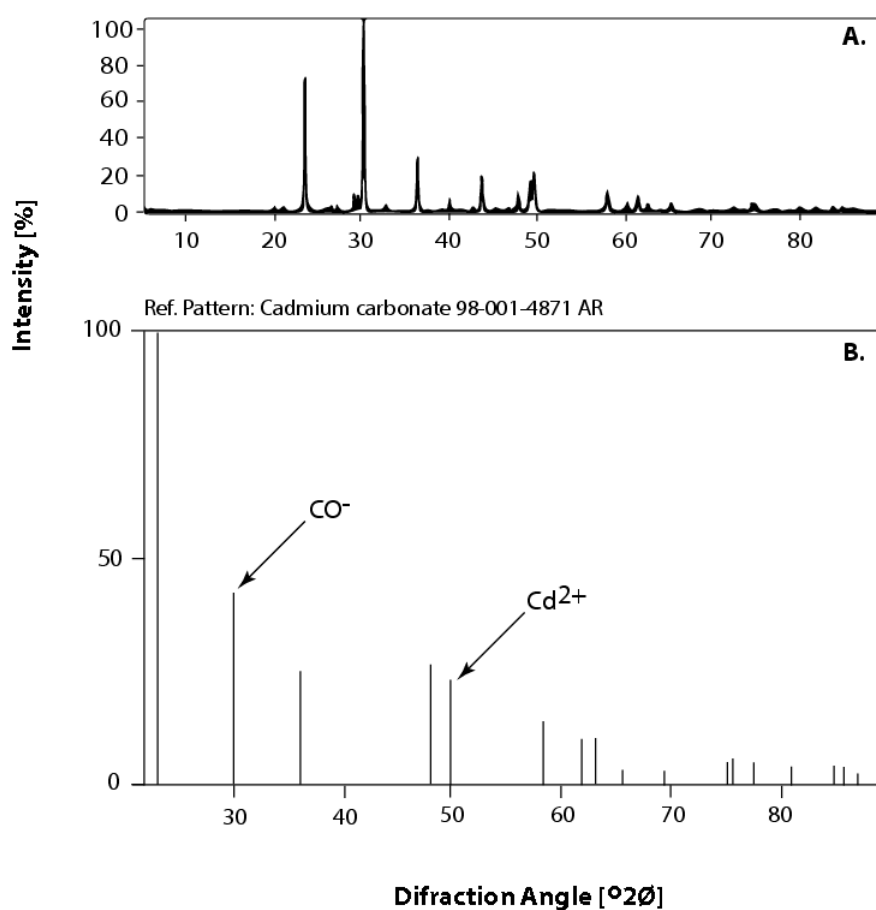


Figure S1: An X ray diffractogram (XRD) analysis of otavite confirmed in a cacao farm in Muzo, Boyacá. The Cd geomorphs were observed surrounding a cacao secondary root hair in topsoil (0.228 m soil depth).