

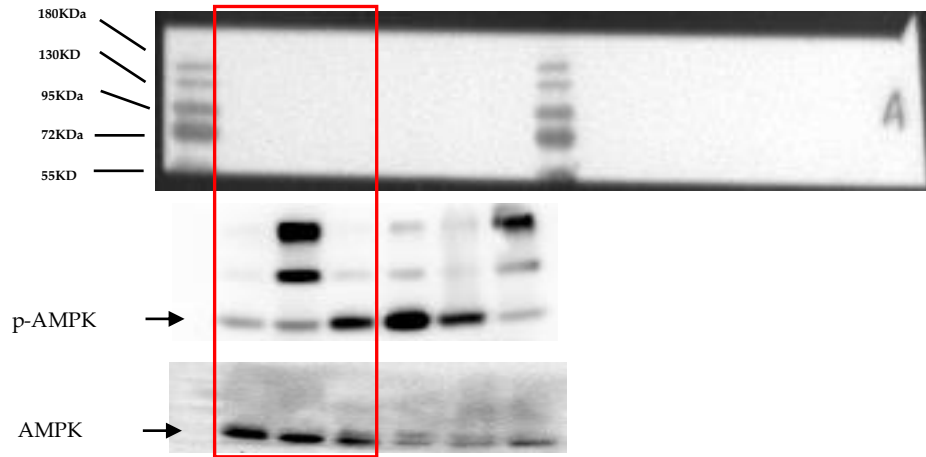
Supplementary files

**Wasabi compound 6-(methylsulfinyl) hexyl
isothiocyanate induces cell death with co-existing
mitotic arrest and autophagy in human chronic
myelogenous leukemia K562 cells**

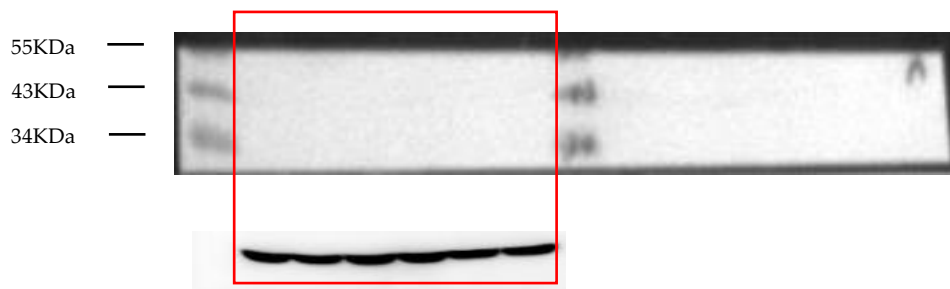
Kun-Ming Wu ^{1,2,3}, Hui-Fen Liao ⁴, Chih-Wen Chi ^{5,6}, Yu Ru Kou ^{1,*} and Yu-Jen Chen ^{3,5,7,8,*}

Figure 3: Original blot

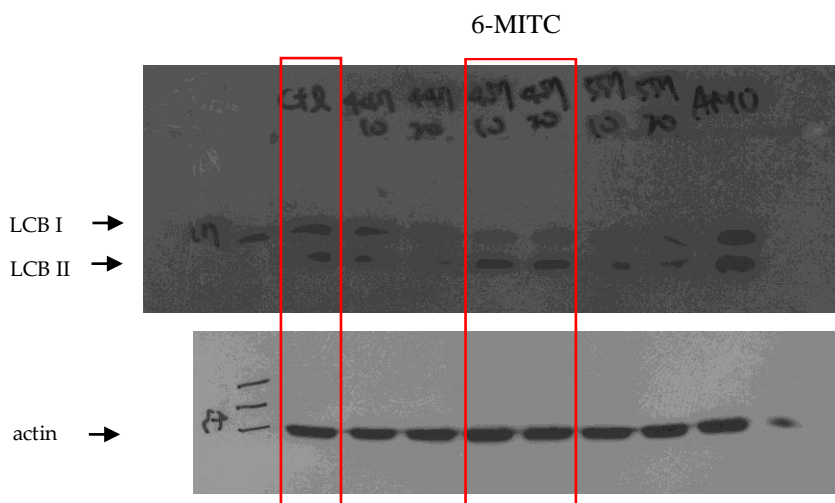
p-AMPK and AMPK



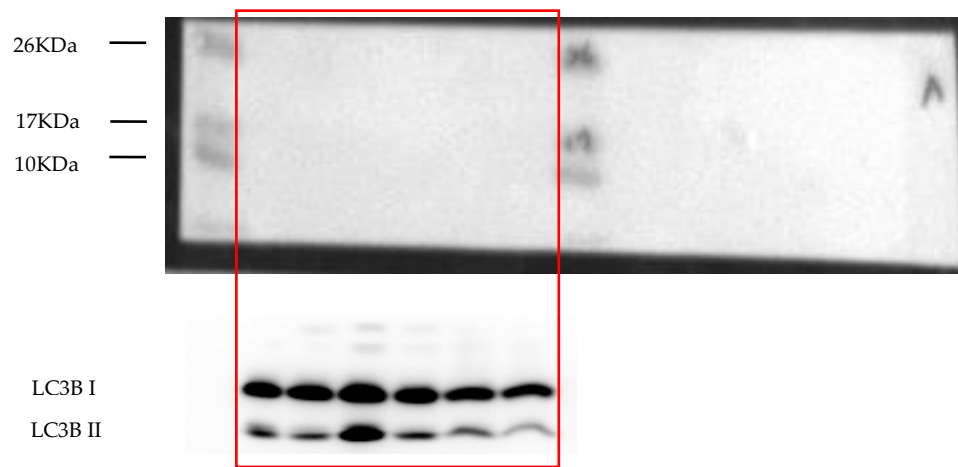
Actin



LC3B protein was exposure to x-ray film



LC3B treatment with autophagic inhibitor, 3-methyladenine (3-MA)



Actin

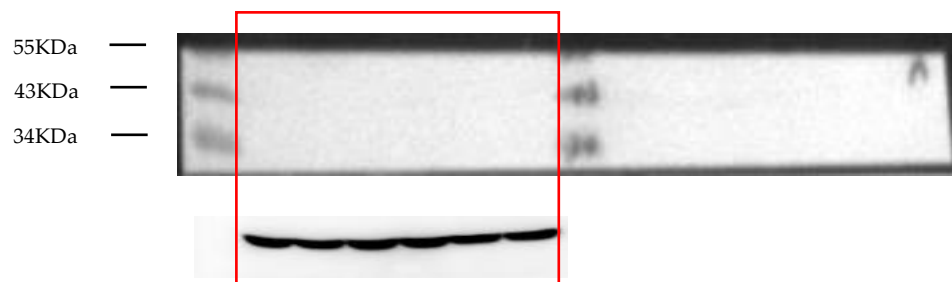


Figure S1. The original blots of figure 3 in the manuscript.