

Article

The Effects of Working Memory Capacity in Metaphor and Metonymy Comprehension in Mandarin-English Bilinguals' Minds: An fMRI Study

Chia-Hsin Yin ¹ and Fan-Pei Gloria Yang ^{2,3,4,*}¹ Department of Teaching and Learning, The Ohio State University, Columbus, Ohio, OH 43210, USA; yin.762@osu.edu² Department of Foreign Languages and Literature, National Tsing Hua University, Hsinchu 300044, Taiwan³ Center for Cognition and Mind Sciences, National Tsing Hua University, Hsinchu 300044, Taiwan⁴ Department of Radiology, Graduate School of Dentistry, Osaka University, Osaka 565-0871, Japan

* Correspondence: fbyang@gmail.com

Abstract: This study investigated the role of working memory capacity (WMC) in metaphoric and metonymic processing in Mandarin–English bilinguals' minds. It also explored the neural correlations between metaphor and metonymy computations. We adopted event-related functional magnetic resonance imaging (fMRI) design, which consisted of 21 English dialogic sets of stimuli and created five conditions: systematic literal, circumstantial literal, metaphor, systematic metonymy, and circumstantial metonymy, contextualizing in daily conversations. A similar fronto-temporal network for the figurative language processing pattern was found: superior temporal gyrus (STG) for metaphorical comprehension and inferior parietal junction (IPJ) for metonymic processing. Consistent brain regions were identified in previous studies, in the homologue Right Hemisphere, in better WMC bilinguals. The degree to which bilateral strategies that bilinguals with better WMC or larger vocabulary size resort to is differently modulated by subtypes of metonymies. In particular, when processing circumstantial metonymy, cuneus (where putamen is contained) was activated as higher span bilinguals filtered out irrelevant information, resorting to inhibitory control use. Cingulate gyrus activation was also revealed in better WMC bilinguals, reflecting their mental flexibility to adopt the subjective perspective of critical figurative items by self-control. It is hoped that this research provides a better understanding of Mandarin–English bilinguals' English metaphoric and metonymic processing in Taiwan.

Citation: Yin, C.-H.; Yang, F.-P. G. The Effects of Working Memory Capacity in Metaphor and Metonymy Comprehension in Mandarin-English Bilinguals' Minds: An fMRI Study. *Brain Sci.* **2022**, *12*, 633. <https://doi.org/10.3390/brainsci12050633>

Academic Editors: Jason Rothman, Vincent DeLuca, Alicia Luque, Yanina Prystauka and Toms Voits

Received: 28 February 2022

Accepted: 2 May 2022

Published: 11 May 2022

Publisher's Note: MDPI stays neutral with regard to jurisdictional claims in published maps and institutional affiliations.



Copyright: © 2022 by the authors. Licensee MDPI, Basel, Switzerland. This article is an open access article distributed under the terms and conditions of the Creative Commons Attribution (CC BY) license (<https://creativecommons.org/licenses/by/4.0/>).

Keywords: metaphor; metonymy; working memory; vocabulary; functional magnetic resonance imaging (fMRI)

1. Introduction

1.1. Research Background

1.1.1. Figurative Language

Figurative language, e.g., idioms (e.g., beat around the bush), metaphors (e.g., Knowledge is power.), and metonymies (e.g., The pen is mightier than the sword.) combines semantics and world knowledge with abstract reasoning and is used to convey thoughts, feelings, and ideas that may be inexpressible or less effectively expressed with literal language [1]. Therefore, figurative language competence indicates the ability of abstract thinking [2] and higher-level language processing. In particular, metaphor and metonymy are familiar forms of figurative language and crucial in our everyday language [3–5]. Such nonliteral expressions are widely used to express symbolism in the arts [6,7].

The issue of hemispherical processing for figurative language comprehension is still a debate. Research on the neural correlates of metaphor comprehension has historically

focused on the role of right hemisphere (RH) contributions. Early neuropsychological research suggested that RH was necessary for understanding figurative speech [8,9] which is supported by some previous neuroimaging research [10,11]. However, another set of neuroimaging studies proposed the increasing importance of left hemisphere (LH) involvement in metaphor comprehension [12–15]). A meta-analysis of neuroimaging investigations of discourse even found no evidence of RH contributions to metaphor processing that were unaccompanied by LH contributions [16]. On top of that, Benedek et al. was the first to investigate the neural correlations of figurative language production, claiming that the generation of novel metaphors particularly relies on the left angular gyrus (AG) and the posterior cingulate cortex (PCC), and the left dorsomedial prefrontal (DMPFC) was activated as both metaphor production and creation [17]. Lai and Desai further proposed that there is no lateralization effect for metaphors; both hemispheres are statistically equally activated with small numerical right lateralization [18]. In line with the “spill over” effect in the RH, the LH is activated more for all types of difficult linguistic stimuli. Lai and Desai suggested that the right inferior frontal gyrus (IFG), especially, was activated when the resources provided by the LH were not sufficient due to comprehending difficulties [18].

On the other hand, the neural basis for metonymic processing seems to be a new topic. Few previous attempts have discussed this issue. Recent behavioral research [19] with self-paced reading (SPR), event-related potentials (ERP), and functional magnetic resonance imaging (fMRI), has begun to shed light on the cognitive abilities underlying metonymy, such as referential dependency. Piñango and colleagues proposed that two types of metonymies (systematic and circumstantial) shared an underlying processing mechanism with the overlapping activation in cortical regions, especially the ventrolateral prefrontal cortex (vLPFC) and the dorsolateral prefrontal cortex (dLPFC) [19]. This mechanism differed in the contextualization needed. More recently, in a study that looked at German idioms, Michl [20] further pointed out that metonymies are perceived as less non-literal metaphorical idioms and that metaphors are generally highly non-literal. Besides, metonymy is based on more basic cognition and is suggested to be easier to acquire and comprehend than metaphorical language [21,22] in both children [23] and seniors [24–26]. This idea is also supported linguistically. Metonymies function within one semantic concept or domain, as opposed to metaphors, which connect distinctive semantic concepts or domains [27,28]. Namely, “what is said is likely cognitively or semantically closer to what is meant in a metonymy than in a metaphor (Michl, 2019, p. 100 [20])”, which seems to suggest a systematic difference between metonymies and metaphors.

The overlapping process has been demonstrated between WM and figurative language competence [29,30], mainly in adults [31]. More specifically, WM mediates the ability to integrate and infer meaning in understanding figurative language since non-literal processing is supposed to utilize contextual information to construct meaning [2,32] as well as to defer a literal interpretation [2]. In the study of WM involvement with ambiguity resolution [33,34], a three-stage model of metaphor comprehension of determination, checking, and reinterpretation of the literal meaning to derive a conveyed meaning is posited to allow for nonliteral comprehension [35]. Qualls and Harris [30] showed that adults’ WM and reading comprehension skills should be considered in metaphor comprehension, while coherent interpretation is more likely to appear when metaphors are contextualized and presented within contexts [36]. Similar to metaphor processing, metonymical comprehension is also context-bound [30], and it requires an increased memory load, inferential ability, and contextual cues to relevant information through determining the similarities between the metonymical targets [37]. Compared to the robust relationship between WM and metaphors, the study on the association between WM and metonymy is scarce.

Two more novel studies explained how metaphor and metonymy are different cognitively and semantically. Fregni et al. [38] compared the neural mechanisms of metaphor and metonymy processing, albeit with the hearers’ understanding, demonstrating left-lateralized frontotemporal activation related to the Theory-of-Mind regions [39], such as

the superior temporal gyrus (STS), the temporoparietal junction (TPJ), the medial prefrontal cortex (mPFC), and the precuneus, in both types of non-linear language. The study highlighted the possibility of greater extent of the engagement of cognitive control and conflict resolution in both metaphor and metonymy comprehension. Nonetheless, metaphor resolution seems to have more flexibility for greater distance between the semantic source and the target domain. In metonymy processing, the right inferior frontal was found, due to extra cognitive effort, to integrate nonliteral reference into major meaning of the metaphorical sentence, which was consistent with Rapp et al.'s study [40]. However, these two rigorous research studies are still far from fully addressing a bigger body of literature that is pertinent to metonymies as well as the relations between metaphorical and metonymic processing. There is a critical need to study the neutral correlation between metaphor and metonymy in further detail.

Given that both metaphoric and metonymic comprehension require inferential processing [37,41,42], it is reasonable to assume that cognitive processing resource (i.e., working memory) demands will vary, depending on the types of figurative language. In addition, researchers argued that WM is central to language comprehension since it is necessary for the integration of information and the resolution of ambiguity [33,34]. Although some progress has been made in understanding how metaphors are comprehended [43–45], the study of how metaphor is neurally related to metonymy, working memory, an especially significant memory area for learning [46,47], and vocabulary size, particularly, in Chinese–English bilinguals remains generally outside the mainstream of neurolinguistic investigation.

1.1.2. Working Memory (WM)

Briefly, working memory (WM) is defined as the aspect of memory that involves the simultaneous storage and processing of information. Theoretically, WM is composed of three subcomponents: an executive attentional controller, a memory buffer for processing phonological information, and a memory buffer for processing visuospatial information [48,49]. The resource hypothesis proposes that WM comprises a limited number of general-purpose resources that can enable or enhance a range of cognitive functions [34], including reasoning, learning, mental calculation, and language comprehension [46,50]. Furthermore, WM is a significant component of the cognitive processes underlying bilingual language processing and performance on measures of second language proficiency [51]. Based on the Bilingual Anterior to Posterior and Subcortical Shift (BAPSS) model [52], due to augmented demands on working memory and several language/executive control processes, more frontal network would be established when an additional (L2) language incurs. Shifts to subcortical and posterior regions begin as more continuous and sustained exposure to an L2 in a bilingual immersion environment [53]. In other words, WM is critical to bilingualism.

Neuroimaging research has demonstrated that the neurobiological basis of the WM procedure is known to involve the prefrontal cortex (PFC) [54–56]. For both verbal and visual working memory tasks, the prefrontal cortex and secondary visual cortex were activated bilaterally. The inferior frontal cortex, inferior parietal cortex, and temporal gyrus were principally activated in the left hemisphere [57], whereas predominantly right activation occurred in the inferior parietal region. The importance of the superior occipital gyrus in the visual short-term memory, during the verbal memory updating task, was also found out [56]. In a functional MRI study [55], a bilateral activation in the dorsolateral prefrontal cortex (BA 46 and BA 9), as well as in the anterior cingulate during the concurrent performance of the span tasks, which is expected to engage the central executive, was observed. In addition, Lewis et al. [58], and Monetta et al. [59] even suggested that Parkinson disease participants with impaired WM were simultaneously impaired in the processing of metaphorical language depending on fronto-striatal systems for working memory.

1.1.3. WM, Vocabulary, and Bilingualism

Notably, WM is also reflected in the inhibitory control areas associated with bilingualism and is studied in relation to vocabulary size [60–62]. In a Chinese–English bilingual fMRI study, Guo, Liu, Misra, and Kroll [63] concluded the recruitment of different systems for each local inhibition, the dorsal anterior cingulate cortex (ACC), and the supplementary motor area (SMA). They demonstrated that the dorsal left frontal gyrus and parietal cortex play a role for global inhibition. Since bilinguals must constantly regulate attention [64] between two simultaneously active language systems [65–67], the attentional control and executive functioning related to WMC is more developed in bilingual children than in their monolingual counterparts in terms of selective focus on target hints in conflicting situations [64]. Intriguingly, according to Bialystok et al. [60]; Bialystok and Luk [61], the effects of bilingualism on vocabulary size show consistency in age, yet this claim was only based on their recruitment of native English speakers for the study. In the same investigation of vocabulary size and bilingual children [60] and adults [61], Bialystok and colleagues [60] reported that bilingual children possess a smaller lexicon compared to monolingual speakers. In a similar vein, using the Peabody Picture Vocabulary Test [68], adults control a smaller vocabulary community than their monolingual equivalents [61,69]. Prat et al. [70] stressed that individuals with a smaller lexicon and lower WMC resorted to “neural efficiency” strategy to draw more RH neural resources for metaphor comprehension, which indicates that more attentional demands or conflict monitoring processing would be needed in the increased anterior cingulate activation. This research corroborates that vocabulary size is more strongly related to neural efficiency than individual differences in WMC to neural efficiency [70,71].

The above arguments, thus, increased our curiosity about the potential effects of individual differences in vocabulary size, as bilinguals process metaphor and metonymy. Another motive we have is that vocabulary knowledge and comprehension skills are correlated with verbal working memory and could be quality predictors for metaphor interpretations [72]. Receptive vocabulary ability was proved to be highly reliable predictors of metaphor and metonymy performance in children and adults [73]. Additionally, strengthening language learners’ metaphor awareness facilitates their vocabulary acquisition and retention [74]. Reading and vocabulary build the mechanism that constructs rich and complex semantic networks [75,76]). The richer our semantic networks are, the higher quality metaphors we produce. Furthermore, the higher scores in working memory measures also link to better inhibitory control and well-built metaphors [77]. On top of that, in this multilingual world, bilingualism and multilingualism is the global trend [78] and have caught abundant attention in language acquisition discipline [79–81]. However, in the novel and regular metonymy tests [82], as expected, speakers of English, Korean, and Spanish treated the tasks differently, and the most proficient learners of English demonstrated the closest performance to native speakers. The result is explained by the generative lexicon approach to metonymy and calls for more attention on speakers of non-English natives. The inquiry of whether bilingualism on other languages, such as Mandarin Chinese, sheds lights on WMC and lexicon in understanding figurative language is underexplored.

1.1.4. Types of Metonymies

Our interests in different types of metonymies was inspired by, to our best knowledge, the only neuro-cognitive study in systematic and circumstantial metonymy [19] so far. Pinango et al. [19] illustrated the differences between the two labels of metonymies, based on different terminologies that are used to describe these labels: “whereas systematic metonymy (e.g., producer-or-product, place-for-event, place-for-inhabitant) has been given labels like regular polysemy or lexical metonymy [83,84], circumstantial metonymy has been given labels such as reference or meaning transfer [85,86])” (p. 352). In this study, an example to unveil the differences between the two types of metonymies is provided: (a) highly conventionalized systematic metonymy (producer-for-product: “We all read Shakespeare”.); (b) less conventionalized circumstantial metonymy (“[an old bartender says to the new hire:] ‘The martini at Table 10 is a regular customer.’”). Systematic metonymy requires more contextual demands, whereas circumstantial metonymy is more contextualized [19]. Both types capture a similar dependency between the named and intended conceptual aspects [19,85–87].

1.2. Research Purpose

As previously described, substantial psycholinguistic [75,88,89] and neuroscientific [10,13] research has thoroughly investigated the cognitive processes in metaphor comprehension. Nonetheless, little is known about how metaphor is related to metonymy, a conceptual projection whereby one domain is partially understood in terms of another domain included in the same experiential area [90]. As a result, the present study aims to identify the plausible relationship between metaphorical and metonymic sentence processing on a neural basis.

Additionally, individual differences in cognitive capacities are associated with differences in recruitment and modulation of working memory and executive function regions [33,75], indicating the “overlapping computations in metaphor comprehension and general thinking and reasoning (p. 282 [70])”. Since metonymic comprehension also requires abstract thinking [2] and reasoning, the second purpose of this study is to investigate the relationship between individual differences in working memory capacity and metaphor and metonymy processing.

Alternatively, we could expect a common neural signature for all types of figurative language processing because they all require a certain amount of non-literal understanding that goes beyond literal expression. As predicted by the standard pragmatic model, it states that all types of figurative language violate the maxim of truthfulness [91,92]. Potential regions for brain areas shared by all types of figurative language would, consequently, include regions that are associated with theory of mind processing [93]. However, studies that showed comparison differences in different types of metaphors [94], between metaphor and irony [95]; Eviatar and Just, [96]) or between metaphor and sarcasm [97], are found predominantly in English as the first language (L1) speakers’ minds. Accordingly, this study fulfils this gap and aims to further investigate whether the importance of working memory capacity [77] and vocabulary size [70] have an impact on both metonymy (systematic metonymy and circumstantial metonymy) [19] and metaphor computation, which, to our belief, has not been thoroughly investigated in Mandarin-English bilinguals. We therefore hypothesize that:

1. Metaphorical processing engages some crucial brain areas with metonymic processing.
2. There are individual differences in WMC for bilinguals when comprehending metaphor and systematic and circumstantial metonymy.
3. There are individual differences in vocabulary size for bilinguals when comprehending metaphor and systematic and circumstantial metonymy.

As such, we propose three research questions to guide the study:

1. What are the neural correlates between metaphor and metonymy processing in

- Mandarin–English bilinguals’ minds?
2. What is the role of working memory capacity in metaphor and metonymy in Mandarin–English bilinguals’ minds?
 3. What is the role of vocabulary size in metaphor and metonymy comprehension in Mandarin–English bilinguals’ minds?

2. Materials and Methods

2.1. Participants

Data were initially collected from twenty-one Mandarin–English bilinguals (six males, fifteen females; mean age = 27.19; SD = 4.23) recruited through various universities in northern Taiwan. Four participants were excluded because of excessive head motion (greater than 2 mm) from fMRI data analysis (The remaining 17 participants, 5 males and 12 females (mean age = 27.11; SD = 4.56) were included for the whole-brain imaging analysis.). All participants were right-handed and self-reported to have no history of neurological illness, brain injury, or psychiatric disease. They had normal or corrected-to-normal vision. Written informed consent, in accordance with the guidelines set by the National Tsing Hua University Research Ethics Committee and Imaging Center for Integrated Body, Mind, and Culture Research, National Taiwan University and compensation fees, was given to all participants.

2.2. Experiment Tasks

Outside the scanner, the Language Background Questionnaire, selected parts from the Language Experience and Proficiency Questionnaire, the LEAP-Q, [98], reading span task in Mandarin, reading span task in English [99], and the Nelson Denny Reading Test [100] were taken by the subjects.

Inside the scanner, the subjects took a valence judgement task under three intermixed conditions (literal, metaphor, and metonymy) of five language subtypes: systematic literal, circumstantial literal, systematic metonymy, circumstantial metonymy, and metaphor.

2.2.1. The Language Background Questionnaire and The Language Experience and Proficiency Questionnaire (LEAP-Q)

The Language Background Questionnaire was designed anew; the LEAP-Q was adapted and utilized in this study in order to scrutinize subjects’ English language learning experience, background, and proficiency. The LEAP-Q was constructed to assess foreign language learning experience and proficiency profiles in second and other foreign languages, irrespective of the specific languages involved. The internal validity of the LEAP-Q, criterion-based validity of the LEAP-Q, and predictive relationships between self-reported measures and performance on standardized language tests, as well as predictive relationships between language history and self-reported proficiency levels, have been recognized [98]. However, in terms of English proficiency level, given that Taiwan is an English as foreign language (EFL) context, which differs from an English as a second language (ESL) environment described in the LEAP-Q, we created the Language Background Questionnaire. Participants who self-reported reaching the CEFR, The Common European Framework of Reference for Languages: Learning, Teaching, Assessment, B2, or its equivalent, were generally considered to be an English bilingual. Therefore, we applied the adapted the Language Experience and Proficiency Questionnaire (LEAP-Q) to fully describe participants’ bilingual learning experience as contextualizing their valid Mandarin–English bilingual status with the Language Background Questionnaire. All of the twenty-one subjects were qualified to be a Mandarin–English bilingual person.

2.2.2. Working Memory Measurement (Reading Span Task)

Reading span tasks in both Mandarin and English were taken by 21 participants after the fMRI scan. According to Daneman and Carpenter's [33] classic reading span task (RST) and listening span task (LST) finding, RST was significantly correlated with LST, and span tasks would be a powerful predictor of the neural bases in individual differences in verbal working memory capacity. In the current study, the reason that RST was selected for the experiment, rather than LST, was due to the fact that sentence comprehension demands extensive storage of partial and final products in the service of complex information processing, as well as requiring maximum attentional control [101]. Another reason is that RST is excellent for testing parallel control functions in executive systems of working memory. In addition, the way RST administered was much more cognitively and neurally correlated with the fMRI context when participants reading sentences for judgement than LST. In this study, RST was performed in two different versions in Mandarin and English, respectively, and was measured online as adapting Conway et al. 's design [99] (<http://www.pitt.edu/~tol7/res/research/psych-tests/rspan/>, accessed on 7 May 2016), indicating significant reliability of working memory tests.

During the RST procedure, subjects were required to remember two, three, four, five, or six alphabets while doing sentence semantic judgement tasks. That is, for each trial, two, three, four, five, or six alphabets would present, equally, for three times in five blocks. There were, thus, 66 sentences. Another set of three two-alphabet trials in one block were used as practice trials.

2.2.3. Nelson-Denny Reading Test

The Nelson–Denny Reading Test [100] provides measures of comprehension, reading rate, and vocabulary. It is widely used in research studies with undergraduate students and for assessment purposes in the USA. Two parts of the test were conducted in the current study: the reading comprehension test (7 passages with 38 questions) and the vocabulary test (80 questions mainly on vocabulary semantic meaning and pragmatic use) were performed by the participants.

2.3. Experimental Stimuli

The stimuli for the fMRI valence task were 63 English dialogic sentence sets with equal amount of 21 literal, metaphorical, and metonymic dialogic sentence sets in English. Literal, metaphorical, and metonymic stimuli were all controlled in each task. Circumstantial metonymy is less contextualized than systematic metonymy. Hence, we assume that participants process circumstantial metonymy longer than systematic metonymy because of the familiarity shown in metaphorical comprehension [102–109].

Valence task was selected for several justifications. As Rapp et al. [13] proposed, the valence task may require “deep semantic processing and an assessment of the ‘ground’ of the metaphor”. It should be noted that semantic relations among words are important for valence decisions because figurative meaning has to be integrated based on the analysis of the semantic relations of words. Besides, research [107,108] has demonstrated that valence judgment and semantic relatedness judgment in metaphor processing require the processing of figurative meaning and semantic relations. In the valence judgment task, participants decide whether sentences have a positive, neutral, or negative connotation as comprehending the sentences in each trial. The valence judgement was normalized and balanced in the stimuli (half positive, half negative) in each condition.

2.4. General Experimental Procedure

Subjects were given instructions and practice trials prior to performing the event-related design. There were two types of sentences in each trial: context sentence and target sentence. They were sectioned from a string of relevant pragmatic, daily, colloquial dialogue by different interlocutors or two logical narrative sentences. Target sentence was followed by context sentence. During the valence task, from which subjects reading and making valence judgement within six seconds, they were asked to read each presented target sentence in the mind and decide, as fast and as accurately as possible, whether this condition (context plus target sentences) had a positive, negative, or neutral meaning, indicating their decision by pressing one of three buttons after reading the context sentence. Left index finger responded to negative meaning, right index finger responded to positive meaning, and right middle finger responded to neutral connotation. Complete sentences were visually presented via a mirror mounted above the head coil within the scanner. Each sentence was shown on one line in silver-white letters against a black background. The task was implemented in 3 runs, with each run containing 21 stimuli of three intermixed conditions (LIT, META, METO). For instance, in literal condition, context sentence: "One Emergency Room nurse says to another:" and the target sentence was followed for another 6 s during which the participants made valence judgement: "The patient in room 17B says she needs another pain pill." In metaphor condition, the context could be "At a restaurant, a server says to a cook:" and the target sentence was "The fat pig on Table 7 says he doesn't have enough eggs." In metonymy condition, the context was provided as: "In a bar, an old bartender says to the new hire:", and then, the target sentence followed: "The martini at Table 10 is a regular customer." During the inter-stimulus intervals, a fixation cross was displayed on the screen for 6 s.

The number of positive-valenced and negative-valenced sentences was balanced in all conditions. Each condition had an equal number of high- and low-concreteness, familiarity, and imageability sentences. Each inter-stimulus interval was 6 s. During the inter-stimulus intervals, a fixation cross was shown on the screen. Subjects' responses and reaction times (RTs) were recorded with E-Prime 2.0 software (www.pstnet.com/e-prime/, accessed on 4 July 2016).

After taking valence-judgement tasks [10,13] inside the scanner, participants completed The Language Experience and Proficiency Questionnaire (LEAP-Q) and Nelson-Denny Reading Test [100] outside the scanner. Afterwards, participants were asked to finish the reading span task (RST) in both Mandarin [109] and in English [33,99] online within one week (Figure 1).

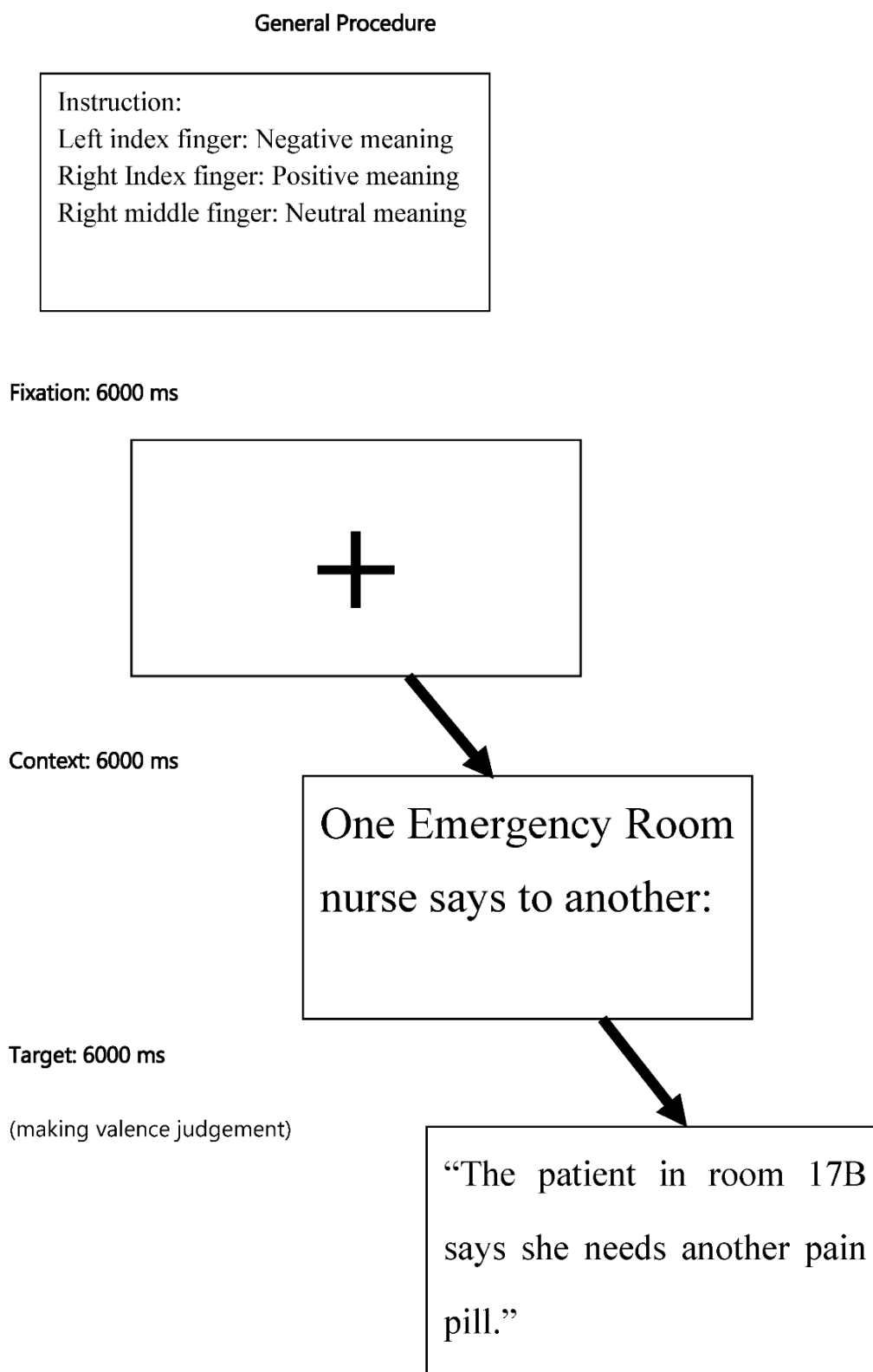


Figure 1. Experimental Procedure of the fMRI Valence task.

3. Results

3.1. Data Acquisition

3.1.1. Behavioral Data Acquisition

Subjects' responses and RTs were recorded with E-Prime 2.0 software (www.pstnet.com/e-prime/, accessed on 4 July 2016).

3.1.2. Imaging Data Acquisition

Brain imaging data were acquired using a 3T Siemens Magnetom Trio, A Tim System scanner (Siemens Healthcare, Erlangen, Germany) equipped with a 12-channel standard head coil. Functional images were acquired with an echo-planar image sequence sensitive to BOLD-contrast (TE 30MS, TR 2.5 s, α flip angle 70°). The volume covered the whole brain with a 64×64 matrix and 46 transverse slices (4 mm thickness with a 0 mm inter-slice gap); (voxel size $3.00 \times 3.00 \times 3.00$ mm). High-resolution MPRAGE 3D T1-weighted scans were also acquired for anatomical localization. Participants lay supine in the scanner where they could directly hear and respond verbally with the vocal transceiver in the scanning room, from where instructions and auditory cues were delivered. Behavioral responses (left index finger for responding negative meaning right index finger) were given via an MRI-compatible response (Luminex platform, Luminex Corp, Austin, TX) pad connected to a computer that logged reaction times. The same computer ran with E-Prime 2.0 software (www.pstnet.com/e-prime/, accessed on 4 July 2016). Head motion was minimized using foam padding on the sides of the head. Right before the start of the experimental sessions, T2-weighted anatomical images were acquired in the same plane as the functional images using a turbo spin echo sequence (TR = 2500 ms, TE = 30 ms, FA = 90 u, FOV = 1,926,192 mm, matrix size = 2,566,256, in-plane resolution 0.7560.75 mm). In each experimental session, 152 whole-brain echo-planar functional images were acquired in 33 contiguous 4 mm axial slices parallel to the AC-PC line (TR = 2500 ms, TE = 30 ms, FA = 80 u, FOV = 1,926,192 mm, matrix size = 64,664, in-plane resolution 363 mm). Before analyses, the first 3 scans of each session were discarded to account for magnetic saturation effects. Whole-brain T1-weighted anatomical images (1 mm³) were also acquired prior to the experiments.

3.1.3. Imaging Data Preprocessing

The resulting functional scans were preprocessed using Matlab (version R2016a, Mathworks, Inc., Natick, MA, USA) and SPM 8 (Wellcome Trust Centre for Neuroimaging, UK, <http://www.fil.ion.ucl.ac.uk/spm/software/spm8>, accessed on 8 February 2017): slice timing correction was performed, using the first slice as a reference, followed by realignment and adjustment of head motion using the first image of each session as a reference, after realigning the first image of each session to the first image of the first session (no subjects moved more than the length of a voxel in any one direction, thus none were excluded from the analysis); functional and anatomical images were co-registered using a two-step procedure involving the participant's T2- and T1-weighted anatomical images. Functional images were spatially normalized to the standard stereotaxic Montreal Neurological Institute (MNI) space by applying the transformation matrix, derived by normalizing the T1-weighted anatomical image, to the SPM 8 templates/T1.nii image.

3.2. Data Analysis

3.2.1. Behavioral Data Analysis

Behavioral data collected during scans were averaged across each condition following logarithmic transformation to account for reaction time (RT) outliers (Ratcliff, 1993[110]). Results across the three conditions (LIT, METO, META) were compared using one-way analyses of variance (ANOVAs).

3.2.2. Behavioral Data Results

Mean score of the reading comprehension was 21.62 (total score: 38.00; SD = 6.80), and the mean score of vocabulary was 35.50 (total score: 80.00; SD = 12.09) from The Nelson–Denny Reading Test [100]. English working memory measurement mean score was 0.7608 (total score: 1.0000; SD = 0.1161) and Mandarin working memory measurement mean score was 0.7675 (total score: 1.000; SD = 0.1430). Pearson correlation between English WM and Mandarin WM score was 0.870 ($R^2 = 0.757$). This illustrated that, in Mandarin–English bilingual minds, English WMC is strongly correlated with Mandarin Chinese WMC, which validates our research in studying the role of bilingualism of English and Mandarin speakers.

For the behavioral data, we constructed linear mixed models, using the lme4 package [111] in R version 3.3 (R Core Team, 2016). Language type (literal, metonymy, and metaphor) was included as a fixed effect, and random factors included intercepts for participants and items. Table 1 reported the mean reaction time (RT) of each language type and its standard error. The reaction time (RT) among literal, metaphor, and metonymy comprehension slightly varied. Individuals spent the most time processing metonymy and the least on literal sentences; however, to our surprise, Type II Wald F test with Kenward–Roger df showed no significant effect of language types ($F < 1$, $p = 0.59$) (Table 1). In consequence, we assume that the level of familiarity or difficulty for these three types of language will differ as fMRI evidence has revealed.

Table 1. Behavioral data of fMRI scanning for three language types.

Type	Mean RT (ms)	Standard Error	<i>p</i> (F-test)
Literal	3830.27	141.36	0.59
Metaphor	3843.44	140.67	
Metonymy	3996.08	143.35	

To explore our speculation that items in the systematic literal and metonymies were unfamiliar (more difficult) to our subjects, we constructed another mixed effect model, with language type (literal and metonymy) and subtype (circumstantial and systematic) as fixed effects, as well as random participants and items intercepts. Type II Wald F test with Kenward–Roger df showed a near significant effect of subtype ($F(1, 36.94) = 3.03$, $p = 0.08$), with mean reaction time in the systematic subtypes ($M = 3978.72$; $SE = 151.78$) longer than that in the circumstantial subtypes ($M = 3734.06$; $SE = 146.82$), $p = 0.08$. Neither main effect of language type, nor interaction between the two, was discovered (both $F_s < 1$). This confirmed our speculation to such a degree that we further conducted a re-analysis of the fMRI data, focusing on systematic and circumstantial view analyses of the trials.

3.2.3. Imaging Data Analysis

All image processing operations and analyses were performed with Matlab (version R2016a, Mathworks, Inc., Natick, MA, USA), and d SPM 8 (Wellcome Trust Centre for Neuroimaging, UK, <http://www.fil.ion.ucl.ac.uk/spm/software/spm8>, accessed on 8 February 2017). The functional images of each participant were corrected for motion and realigned in the first stage of data analysis. T1 anatomical images were co-registered to the mean of the functional data and normalized with MNI (Montreal Neurosciences Institute) 152 template. Finally, the functional images were smoothed. Model time courses were calculated by defining stimulus onset asynchrony from the protocol using a convolved with the canonical SPM hemodynamic response function (HRF) to specify the design matrix. Condition and participant effects were estimated according to the general linear model (GLM) in each voxel.

3.2.4. General Linear Model Analysis

At the individual level, brain activity during the execution of the valence task was estimated on a voxel-by-voxel basis using the GLM implemented in SPM 8. The GLM had two regressors of interest in this study: vocabulary scores and working memory capacity scores. In the first level processing analysis, regressors of no interest were the six parameters describing head motion plus the constant regressors accounting for the mean session effect. Linear contrast images were generated for each participant using pairwise comparisons between tasks or between the task and the implicit baseline. The participant-specific contrast images of parameter estimates were used as inputs to a random effects model to permit group-level inferences. The resulting statistical maps were submitted to a voxel-level threshold of p -value < 0.001 , uncorrected, and a cluster extent threshold of p -value < 0.05 , corrected, for the whole brain. The cluster extent thresholds were determined for each group-level analysis using the function `CorrClusTh.m` (v. 1.12), written in Matlab by Thomas Nichols ("`CorrClusTh.m`" could be found on <http://www2.warwick.ac.uk/fac/sci/statistics/staff/academic-research/nichols/scripts/spm>, accessed on 8 February 2017.), and were in the range of 196 to 270 voxels.

For the two variables of interest in second level analysis, we constructed two regression models respectively: one with vocabulary size as a regressor of interest and working memory as a controlled covariate; the other model with working memory capacity as a regressor of interest and vocabulary size as a controlled covariate [70].

3.3. Metaphor and Metonymy in General Processing

3.3.1. META > METO

In the contrast of META > METO, surprisingly, we did not find significant difference based on voxel analysis in our Mandarin–English bilinguals. However, understanding that how figurative expressions pose a challenge for the overall language processing mechanism is vital. Previous research presented that metaphorical conceptualizations might be stored as fixed neural circuits in the brain that get automatically activated when processing metaphors [112]. In an fMRI study, Gallagher and colleagues [113] found support for a connection between metaphor comprehension and ToM (Theory of Mind) since both tasks activate the medial prefrontal cortex. Conversely, others have found evidence implying that the development of language skills precedes the development of ToM, thus reversing the link [114].

To process an unfamiliar figurative expression, increasing engagement of the RH in order to compute more complex semantic information was reported in Giora, Zaidel, Soroker, Batori, and Kashner's research [106]. They found differential effects of right and left brain lesions on understanding salient metaphors. Few bilingual studies have addressed the RH neural efficiency in different non-native languages, and it seems that cerebral asymmetries are disclosed in bilingual figurative processing despite that they are not entirely consistent with the native speaker processing patterns [115].

3.3.2. METO > META

This contrast, METO > META, which has not yet been compared in other studies, in our finding, suggested that SupraMarginal, cerebellum, and precentral gyrus regions were primarily involved, as displayed in Table 2 and Figure 2. We previously defined metonymy as the notion of referential dependency and functional correspondence. Distinct from metaphor, metonymy not only requires individuals' pragmatic adjustment processes, looking for the source of the target concept for functional correspondence, but also perceptual integration of the reference transfer (e.g., in the form of producer-for-product). Individuals need to be more sensitive to the semantic and imagery clues beyond the metonymy structure than processing metaphor. It is reflected in the role of right SupraMarginal for making phonological word choices, as well as inhibiting and projecting

emotions, rather than being egocentric [116]. Here, we speculate that metonymy comprehension may appear to be associated with an individual's social perspective-taking.

This speculation is supported by our cerebellum evidence. As formerly mentioned, we pinpointed cerebellum activation in attention, phonological, and semantic activity. Essentially, the role of the cerebellum was empirically acknowledged by its role in linguistic [117], as well as related cognitive and behavioral-affective [118], and contributed as “cognitive cerebellum” [119,120]. Higher-level language and metalinguistic abilities in figurative tasks have also been investigated with cerebellar lesions [121,122]. For example, Murdoch and Whelan [123] described 10 patients with primary left cerebellar strokes who had difficulties in producing multiple definitions (provision of two distinct meanings of spoken homophonic words), recreating sentences tasks, in figurative and ambiguous language tests, in word association tasks, in antonym/synonym generation, and in interpreting semantic absurdities.

Table 2. Whole Brain Analysis of Metonymy minus Metaphor Contrast (Differential Contrast for Metonymy > Metaphor sentences. Random effects model, $p < 0.001$ uncorrected, $p < 0.05$ FDR-corrected. Coordinates are reported in MNI space.).

Region	BA	Hemisphere	Voxels	X	Y	Z	Max <i>t</i> -Value
SupraMarginal gyrus	40	R	733	60	−36	34	5.40
Cerebelum 4_5		R	312	20	−42	−24	5.28
Precentral gyrus	4	L	238	−30	−18	58	5.19

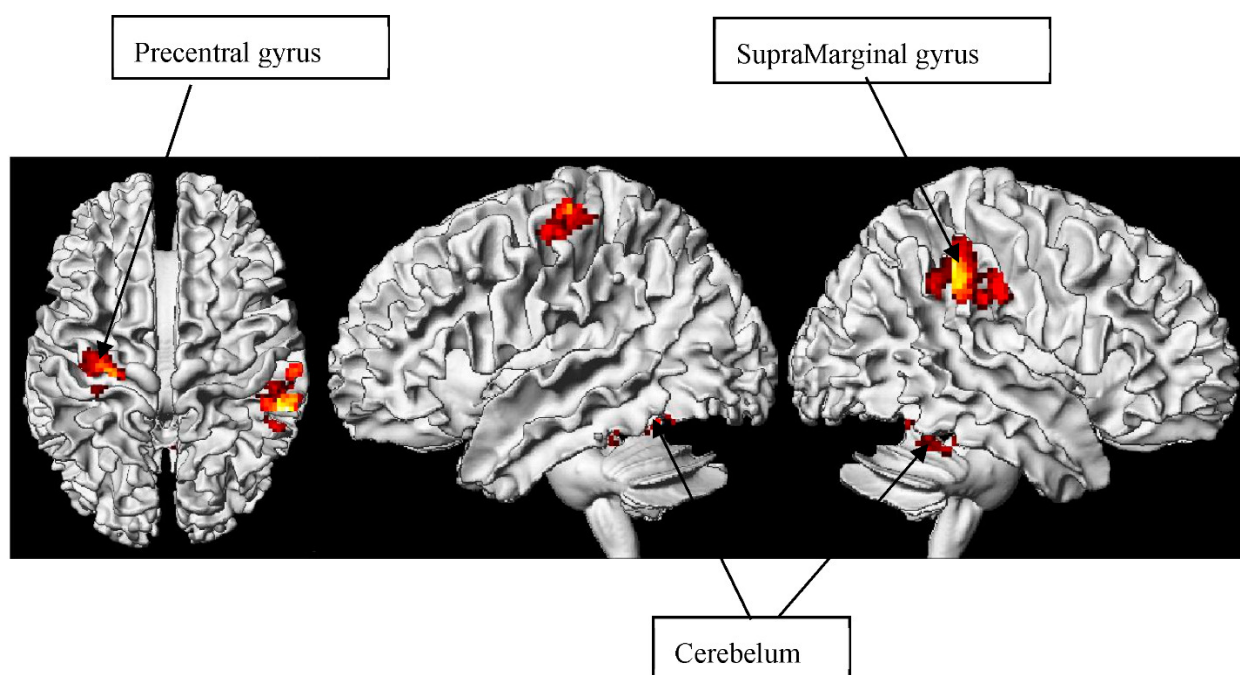


Figure 2. Differential Contrast for Metonymy > Metaphor Contrast.

While more lesion research of these regions was identified for cerebellum's linguistic role, our finding may provide new insights into the neural connection between cerebellum and different figurative language types. Therefore, in line with the recent studies in cerebellar theory related to reading, our finding further strengthens the link between cerebellums in accordance with figurative language processing. In addition, the precentral gyrus has been implicated in mental imagery strategies and episodic memory retrieval [124], which are relevant to metonymy.

3.3.3. Metaphor and Circumstantial Metonymy and Systematic Metonymy Processing

In order to fulfill our research questions further, we conducted another whole-brain correlation analysis. We distinguished our stimuli of three conditions (literal, metaphor, and metonymy) from “systematic” and “circumstantial” view and, thus, into five sub-types: systematic literal, circumstantial literal, systematic metonymy, circumstantial metonymy, and metaphor contrasts.

3.3.4. Vocabulary Effects

META > C LIT

In Table 3 and Figure 3, the vocabulary effect of metaphor relative to circumstantial literal contrast was, not surprisingly, found in IFG, but interestingly, it was found in the right hemisphere rather than in the typical left hemisphere. Distinct from the RH spillover hypothesis that increased RH activation is due to a higher ratio of processing demands in lower capacity individuals, our study found that individuals with a higher vocabulary size, in fact, depend more on their RH. In other words, when comprehending metaphor, in contrast to literal reading, our subjects with lower vocabulary sizes were dominantly LH reliable without resorting to RH neural resources. However, for subjects with higher vocabulary sizes, they apparently recruited much greater neural reserves from RH. Although no general advantages for figurative language processing in the RH were claimed, Bohrn et al. [125] proposed that RH involvement was found for novel metaphors and for semantic processes. Hence, it may be explainable that, in metaphor processing, individuals with higher vocabulary sizes recruit their RH for conceptualization strategy through visual imagery [126] and “imagery thinking” [127] in a flexible way.

Table 3. Vocabulary Effect of Metaphor minus Circumstantial Literal Contrast. Note. Inferior Frontal Gyrus (IFG) (Random effects model, $p < 0.001$ uncorrected, $p < 0.05$ FDR-corrected. Coordinates are reported in MNI space.).

Region	BA	Hemisphere	Voxels	X	Y	Z	Max <i>t</i> -Value
Sub-gyral		R	225	40	4	22	6.34
IFG	6/44/45	R	312	52	0	26	4.56

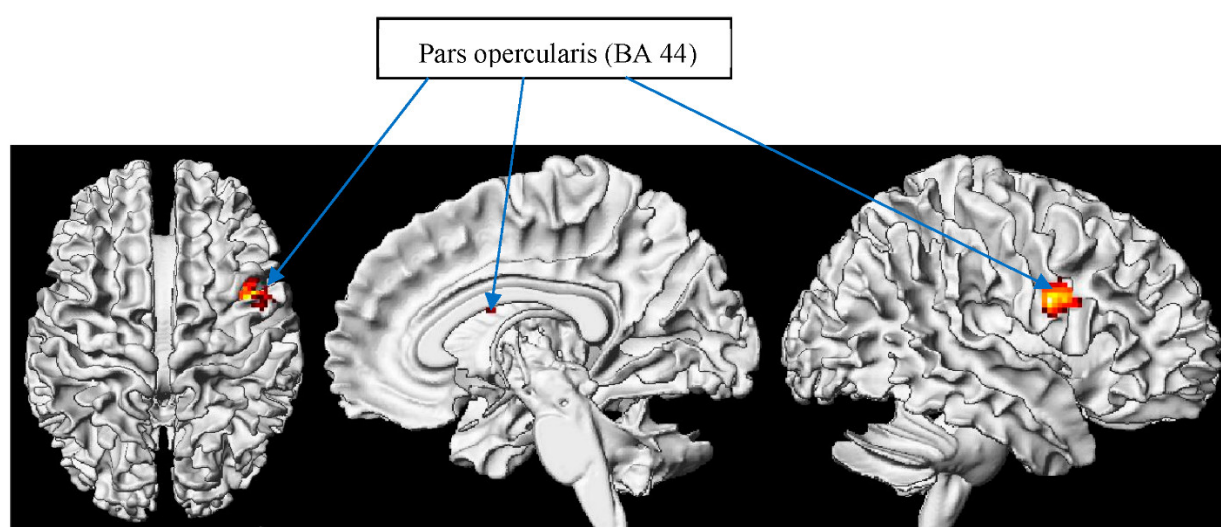


Figure 3. Vocabulary Effect of Metaphor > Circumstantial Literal.

META > C METO

This contrast presented in Table 4 and Figure 4 may not have been investigated previously in the research. In parallel, results were found in the same regions but different hemispheres. Compared with the current study, in accordance to our META > C LIT contrast, in this META > C METO analysis, right IFG was revealed for robust activation in individuals with higher vocabulary sizes during the processing of metaphors. This is consistent with prior research in Rapp et al.'s meta-analysis [128], suggesting that the overall metaphor contrast shown activated, mostly, in IFG in the LH, while our contrast was in the RH.

Table 4. Vocabulary Effect of Metaphor minus Circumstantial Metonymy Contrast. Note. Ventral Anterior Nucleus (VAN), Inferior Frontal Gyrus (IFG), Middle Temporal Frontal (MTG). (Random effects model, $p < 0.001$ uncorrected, and $p < 0.05$ FDR-corrected. Coordinates are reported in MNI space.).

Region	BA	Hemisphere	Voxels	X	Y	Z	Max <i>t</i> -Value
VAN		R/L	781	10	−6	6	8.77
IFG	6/44/45	R	1031	22	−22	44	8.16
MTG	38	L	181	−40	−6	−24	6.45

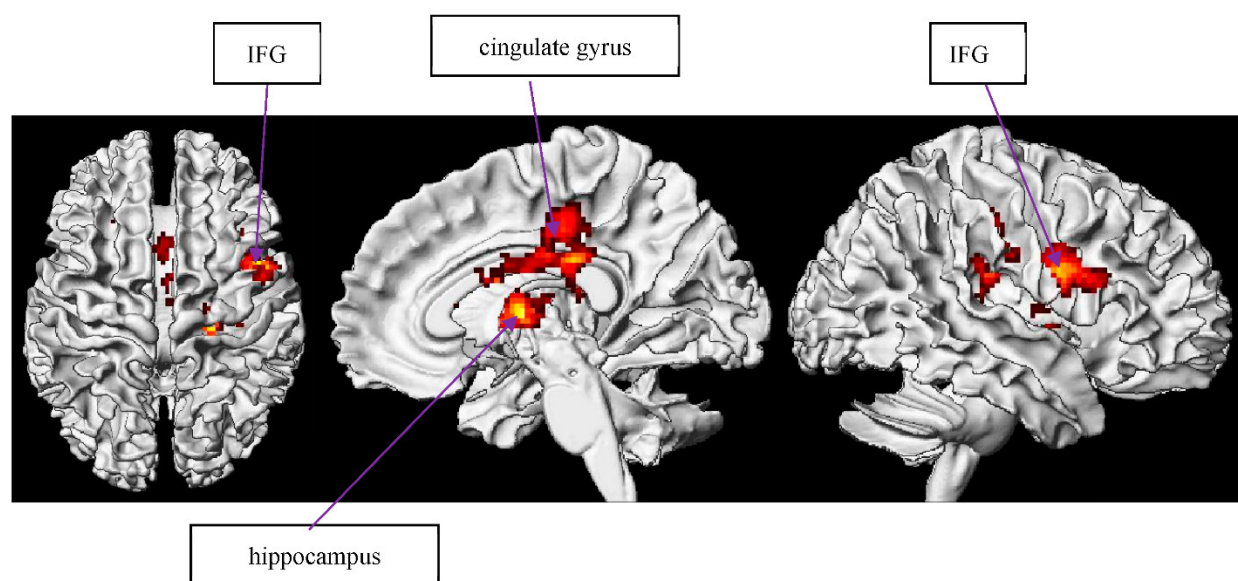


Figure 4. Vocabulary Effect of Metaphor > Circumstantial Metonymy.

C METO

Our results of large right activated regions in the superior temporal gyrus, STG, and posterior cingulate cortex are in line with RH involvement with increased demands [107,129] and with decreased individual reading skills [18,71,130,131]. Prat et al. proposed “neural efficiency” that, when comprehending metaphor, individuals with a lower vocabulary size involved more RH assistance, whereas individuals with higher vocabulary size did not [71,131]. Another study posited the LH efficiency is pertinent to English–Spanish bilingual metaphor understanding [132], illustrating that the LH was more sensitive than the RH to metaphor familiarity. Particularly, we found that, when comprehending metonymy, individuals with a lower vocabulary size also recruit more RH neural resources. The possible account for the increased RH involvement with increased processing demands is that it implies a greater need for more general cognitive processes, such as response selection and/or inhibition [133]. The phenomena which the RH inferior frontal area activated was also the phenomena that the dominant interpretation needed to be

suppressed to accurately comprehend the critical utterance as a metonymy item. Additionally, bilateral activations of hippocampus and cingulate gyrus reflected that individuals with lower vocabulary sizes may resort to more episodic memory in order to perceive metonymic sentential context from their vocabulary relevance. There are individual differences in retrieving the extra RH employment for neural resources and demonstrating bilateral engagement for relevant cognitive representations between people with larger and smaller lexicons.

3.3.5. Working Memory Capacity Effects

The role of working memory capacity was primarily significant in metonymic processing and was highlighted under both circumstantial metonymy and circumstantial literal comprehension.

C METO > C LIT

Remarkably, cuneus was found to be mainly evoked in the RH. In addition to the traditional role as a site for fundamental visual processing, gray matter volume in the cuneus is associated with better inhibitory control [134]. Bilateral activation was indicated in the cuneus during WM tasks in fMRI studies [135,136], revealing that stronger cuneus activation was reported for high-workload conditions [135]. In a recent Electroencephalography (EEG) study, Haldane et al. [134] proposed that cuneus increased its activation with increased alpha activity, reflecting active functional task-irrelevant inhibition. This is in tandem with the Resource Sharing theory [33,47,137] entailed for the working memory model. Based on the theory, there is a trade-off between information manipulation and storage. The more efficiently the individuals store their critical information, the more available resources they can infer from. Besides, individuals with higher span scores were likely to possess more robust knowledge about the distribution of syntactic constructions [138,139]. Accordingly, we can infer that individuals with higher working memory capacity scores are not only better at storing the critical item in metonymic sentential context but also at manipulating the critical resource for the target sentence in the experiment by diminishing redundant information. Thus, we strengthen the proof that cuneus, as an inhibitory control, tends to contribute to irrelevant information inhibition for metonymy processing (Table 5 and Figure 5).

Table 5. WM Effect of Circumstantial Metonymy minus Circumstantial Literal Contrast. (Random effects model, $p < 0.001$ uncorrected, and $p < 0.05$ FDR-corrected. Coordinates are reported in MNI space.).

Region	BA	Left/Right	Voxels	X	Y	Z	Max t -Value
Cuneus	18/19	R	195	20	−100	8	7.01

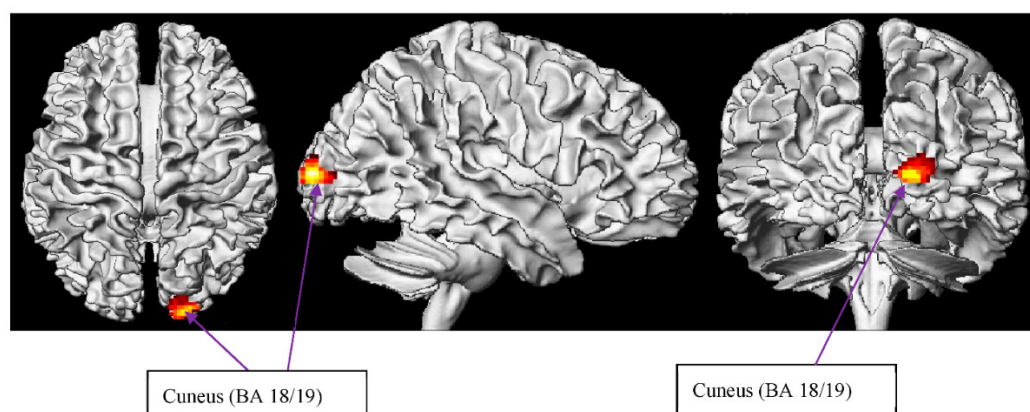


Figure 5. WM Effect of Circumstantial Metonymy > Circumstantial Literal.

C METO

Evidently, cerebellum was prominent in the correlation between working memory capacity and circumstantial metonymy condition (Table 6 and Figure 6). In the same vein, we may support the view of the associations between working memory and cerebellum [140] as well as the investigation that the cerebellum is active during working memory tasks [141,142]. The activation of cingulate gyrus was consistent with Osaka et al.'s finding [143] in higher span group and may, again, support our speculation that individuals with better working memory capacity (higher span group) resort to a perspective-taking strategy for comprehending a broader sense of metonymic connotation. Notably, the observation of elevated BOLD responses in lentiform nucleus (where putamen is contained) can be inferred as the putamen's role and is responsible for inhibitory function, especially for irrelevant information during working memory execution [144], which also supports our previous finding in cuneus function. It is, therefore, indicated that individuals with better working memory capacity also recruit another strategy to better manipulate their limited WM capacity to focus on the target critical items. Additionally, a lentiform nucleus was found in rule-based tasks via hypothesis-testing, dependent on working memory [145].

Table 6. WM Effect Circumstantial Metonymy Baseline. Note. Superior Temporal Gyrus (STG). (Random effects model, $p < 0.001$ uncorrected, and $p < 0.05$ FDR-corrected. Coordinates are reported in MNI space.)

Region	BA	Hemisphere	Voxels	X	Y	Z	Max <i>t</i> -Value
STG	38	R	102	−44	16	−18	5.51
Declive		L	242	−30	−78	−24	4.86
Extra-Nuclear		R	197	0	−38	−4	5.25
cerebellar vermis 3		L	100	28	−28	−4	9.82

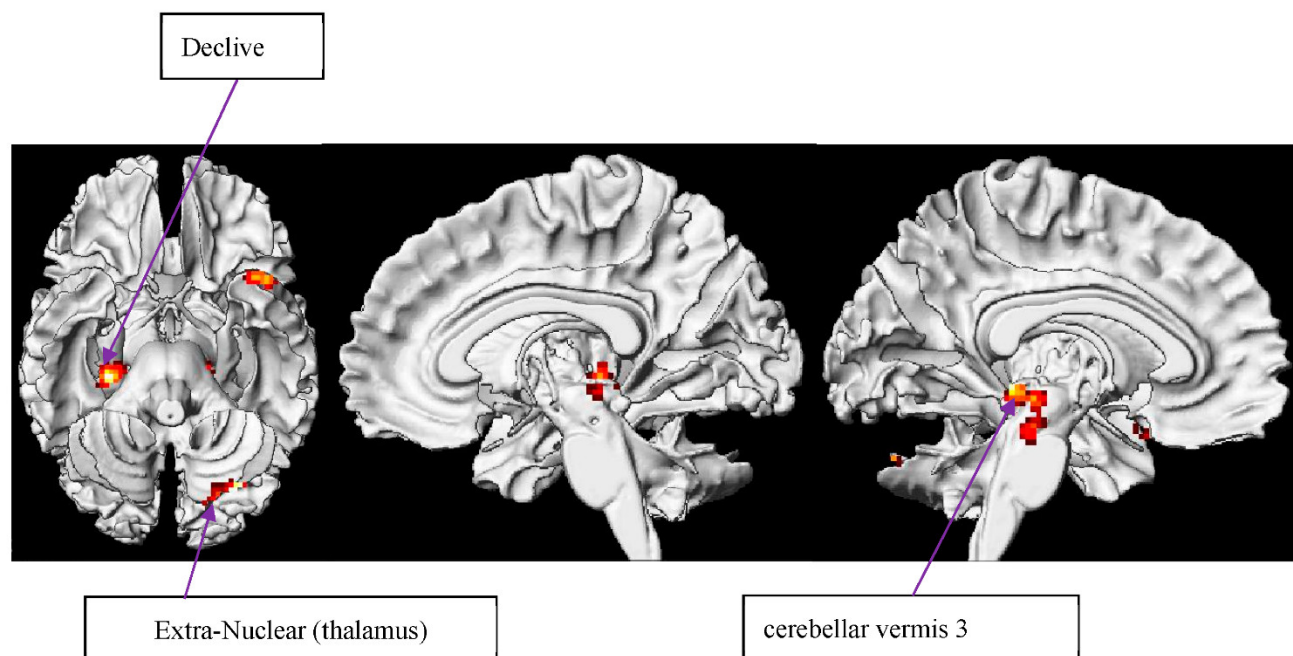


Figure 6. WM Effect of Circumstantial Metonymy Baseline.

4. Discussion

Similar fronto-temporal network for figurative language processing pattern was found: superior temporal gyrus (STG) and inferior parietal junction (IPJ) for metaphor and metonymy comprehension, respectively. STG was activated in metaphorical comprehension, as is also discussed in the previous literature [146]. IPJ was engaged in metonymic processing, different from the previous findings for metaphor tasks [147]. We assume that processing metonymy requires different neuro-cognitive resources compared to metaphor understanding. This strategy was demonstrated, for example, in *cuneus* when reading circumstantial metonymy. Bialystok and Luk [61] indicated that inhibitory control modulates WM in bilingualism. In what follows, our study illustrated that *cuneus*, where putamen is contained and related to WM, was activated in higher span bilinguals. It is suggested that Mandarin–English bilinguals with better WM and vocabulary size resort to inhibitory control use, filtering out irrelevant information in metonymy comprehension as well. Moreover, cingulate gyrus activation was also revealed in better WMC bilinguals, pointing out, to their mental flexibility, to adopt the subjective perspective of critical figurative items by self-control.

We found out that the neural correlates to metaphor and metonymy, as well as the effects of WM and vocabulary size. The first hypothesis was supported by the metaphorical processing, which links some important areas of the brain with metonymic processing. Our results were also consistent with the cognitive and linguistic activities of cerebellar engagement in metonymy interpretation. The second and third hypotheses were partially supported in the whole-brain volumetric analysis, but the effects of WM and vocabulary varied. The only WM effect that this study has proved is circumstantial metonymy contrast. We did not find neural correlation between working memory capacity and metaphor comprehension, as presented in Chiappe and Chiappe's inquiry [77]. However, the activation of middle frontal gyrus (MFG) was consistent with its association with working memory [148] and inhibitory control in bilingualism [61,69,149,150]. In the effects of vocabulary size, interestingly, the finding of metonymic processing resonated with Prat, Manson, and Just's metaphorical investigation [70]. Our Mandarin–English bilinguals with lower vocabulary size also spilled over their RH for compensatory resources as neural efficiency strategy in metonymical processing. This may reflect the neuro-cognitive similarity between metaphor and metonymy and the needs for bilateral semantic network for learners with less vocabulary, even in bilinguals. Hence, circumstantial metonymy is neurally correlated with a smaller lexicon in bilinguals.

No neural correlations were found between systematic metonymy, the effects of WM, and the size of the lexicon. According to the Graded Salience Hypothesis [102–106]), whether a word is used in its literal or figurative meaning is far less relevant than whether that word and its intended meaning is familiar/lexicalized and salient in the context in which it occurs. That is, GSH predicts that performance on lexicalized metaphors will be better than on novel ones. As a result, our findings may extend GSH to the implication that metonymical processing is in the similar trend. Whether the sentences were conveyed in metaphorical or metonymical condition, individuals comprehend circumstantial conditions, which is more familiar, lexicalized, and less difficult, even for bilinguals. This is observed more with the Mandarin–English bilinguals in our study.

Further, as previously unfolded in our literature review, the evidence from psycholinguistic and neurolinguistic studies proposed that metonymy comprehension not only involves consideration and subsequent rejection of a literal sense but it also often involves knowledge of cultural conventions and idealized cognitive models, if only at a subconscious level. As a result, beyond traditional definition and linguistic structure of both metaphor (as conceptual mapping or lexical-pragmatic adjustment processes) and metonymy (as circumstantial with higher conventionalization or systematic with lesser conventionalization degree) [19], we propose that a person requires the ability to make inferences, take different perspectives for reasoning, integrate social-cultural cues of the target

language, and thus, to activate the mental imagery network in both metaphor and metonymy understanding.

Since the awareness of conceptual metaphors does not guarantee bilingual learners' automatic access to conceptual metaphor and metonymy comprehension and their active computation of metaphorical/metonymic mappings [151] during figurative language processing [152], our findings support the neural-imaging evidence. There exists cognitive distance in bilinguals' minds, between relating their (vocabulary) knowledge and experiences to the target metaphorical concepts precisely and schematizing concepts appropriately, to fully comprehend. In terms of pragmatic and/or sociocultural awareness, bilinguals should be informed of the fact that not every type of figurative language is entirely interpretable. However, as Chen and Lai's study [153] clearly argued, it is necessary to identify metaphorical mappings to assist L2/EFL learners in connecting the context and target domain sentences and to encourage them to associate existing and universal knowledge with unfamiliar and specific knowledge. This may offer widespread implications for second or foreign language acquisition and teaching paradigm.

5. Limitations

In our study, several limitations regarding the sample size and individual study parameters should be acknowledged. First, the limitation stems from the gender distribution. In the light of gender differences in human brain structure [154] and in language processing [155], this unequal distribution might have influenced the results we found for both metaphor and metonymy processing. Secondly, due to (1) the nature of fMRI design and (2) the fact that our participants are bilinguals whose native language is Mandarin Chinese, the study may lack of generalizability to the larger population, identification of developmental trajectories, and of distinguishing causes from effects [156].

6. Conclusions

The effects of WM and vocabulary size were found in circumstantial metonymy, rather than in metaphor and systematic metonymy comprehension. However, inhibitory control and cerebellar association in bilingualism [61,69,149,150] shown in middle frontal gyrus (MFG) [148] was supported in working memory modulation. Contrary to our hypothesis, no voxel analysis of systematic metonymy contrast was observed in vocabulary and working memory effect correlation, yet since previous investigations proved that the task demands may modulate the effects of WMC [157–161], we assume that different types of metonymy (systematic and circumstantial metonymy) may also recruit neural demands at different levels.

Taken together, in our volumetric analysis, both the left posterior PFC (BA 44/9) and the left PFC (BA 47) received activated responses. Linking with the left tempo-frontal network for figurative language processing, these regions have been suggested to robustly connect with controlled retrieval and selection of information from semantic memory [162]. Corresponding left PFC regions have been proposed to subserve semantic working memory processes [163].

Future research should study the relevance between neural efficiency and different types of metonymy (e.g., systematic and circumstantial metonymy) and how RH recruit more neural resources to support bilateral computation to work, in concert, in a dynamic pattern for less bilingual speakers with different native languages rather than English. Our fMRI evidence suggests that it is critical to reinforce the neuro-cognitive and neuro-linguistics foundation of metaphor and metonymy reading in bilingualism. Apparently, the area of neural correlation between metaphor and metonymy processing with Mandarin–English bilinguals calls for much more research. This approach promises to provide greater insight into flexible neural mechanisms of figurative languages and other cognitive abilities for bilingualism.

Author Contributions: Conceptualization, C.-H.Y. and F.-P.G.Y.; methodology, C.-H.Y.; software, C.-H.Y. and F.-P.G.Y.; validation, C.-H.Y.; formal analysis, C.-H.Y.; investigation, C.-H.Y.; resources, F.-P.G.Y.; data curation, C.-H.Y.; writing—original draft preparation, C.-H.Y.; writing—review and editing, C.-H.Y.; visualization, C.-H.Y. and F.-P.G.Y.; supervision, F.-P.G.Y.; project administration, F.-P.G.Y.; funding acquisition, F.-P.G.Y. All authors have read and agreed to the published version of the manuscript.

Funding: This research received funding from Professor Fan-Pei Gloria Yang’s grants supported by Ministry of Science and Technology (Grant No. 107-2410-H-007-050) and Ministry of Education (Grant No. 108J0054RT).

Institutional Review Board Statement: The study was conducted according to the guidelines of the Ethics Committee of National Tsing Hua University and approved by the Institutional Review Board (IRB No.: 10408HS034).

Informed Consent Statement: Informed consent was obtained from all subjects involved in the study.

Data Availability Statement: Data will be available upon request from the corresponding author.

Acknowledgments: We acknowledge the support from the Lab for Language and Cognitive Neurology and the Center for Cognition and Mind Sciences at National Tsing Hua University, which are led by Professor Fan-Pei Gloria Yang. We also thank Professor Maria Piñango and Andy Muye Zhang at Yale University and Kuan-Jung Huang at University of Massachusetts Amherst for discussion on experimental paradigms.

Conflicts of Interest: The authors declare no conflict of interest.

References

1. Bischofshausen, S.; Makoid, L.A.; Cole, J. Effects of Inference Requirements on Comprehension and Recognition of Metaphors. *Metaphor Symb. Act.* **1989**, *4*, 227–246.
2. Levorato, M.C.; Cacciari, C. Children’s comprehension and production of idioms: The role of context and familiarity. *J. Child Lang.* **1992**, *19*, 415–433.
3. Gibbs, W.W. Lost science in the third world. *Sci. Am.* **1995**, *273*, 92–99.
4. Makkai, A.; Boatner, M.T.; Gates, J.E. *A Dictionary of American Idioms*, 3rd ed.; Barron’s Educational Series: Hauppauge, NY, USA, 1995.
5. Milosky, L.M. Nonliteral language abilities: Seeing the forest for the trees. In *Language Learning Disabilities in School-Age Children and Adolescents: Some Principles and Applications*; Macmillan College Publishers: New York, NY, USA, 1994, pp. 275–303.
6. Kennedy, G.A. *The Art of Rhetoric in the Roman World: 300 BC–AD 300*; Wipf and Stock Publishers: Eugene, OR, USA, 2008; Volume 2.
7. McCarthy, M.; Carter, R. “There’s millions of them”: Hyperbole in everyday conversation. *J. Pragmat.* **2004**, *36*, 149–184.
8. Brownell, H.H.; Simpson, T.L.; Bihrl, A.M.; Potter, H.H.; Gardner, H. Appreciation of metaphoric alternative word meanings by left and right brain-damaged patients. *Neuropsychologia* **1990**, *28*, 375–383.
9. Rinaldi, M.C.; Marangolo, P.; Baldassari, F. Metaphor processing in right braindamaged patients with visuo-verbal and verbal material: A dissociation (re)considered. *Cortex* **2004**, *40*, 479–490.
10. Mashal, N.; Faust, M.; Hendler, T.; Jung-Beeman, M. An fMRI investigation of the neural correlates underlying the processing of novel metaphoric expressions. *Brain Lang.* **2007**, *100*, 115–126.
11. Stringaris, A.K.; Medford, N.; Giora, R.; Giampietro, V.C.; Brammer, M.J.; David, A.S. How metaphors influence semantic relatedness judgments: The role of the right frontal cortex. *NeuroImage* **2006**, *33*, 784–793.
12. Lee, S.S.; Dapretto, M. Metaphorical vs. literal word meanings: fMRI evidence against a selective role of the right hemisphere. *NeuroImage* **2006**, *29*, 536–544.
13. Rapp, A.M.; Leube, D.T.; Erb, M.; Grodd, W.; Kircher, T. Neural correlates of metaphor processing. *Cogn. Brain Res.* **2004**, *20*, 395–402.
14. Rapp, A.M.; Leube, D.T.; Erb, M.; Grodd, W.; Kircher, T. Laterality in metaphor processing: Lack of evidence from functional magnetic resonance imaging for the right hemisphere theory. *Brain Lang.* **2007**, *100*, 142–149.
15. Shibata, M.; Abe, J.-I.; Terao, A.; Miyamoto, T. Neural mechanisms involved in the comprehension of metaphoric and literal sentences: An fMRI study. *Brain Res.* **2007**, *1166*, 92–102.
16. Ferstl, E.C.; Neumann, J.; Bogler, C.; Von Cramon, D.Y. The extended language network: A meta-analysis of neuroimaging studies on text comprehension. *Hum. Brain Mapp.* **2008**, *29*, 581–593.
17. Benedek, M.; Beaty, R.; Jauk, E.; Koschutnig, K.; Fink, A.; Silvia, P.J.; Dunst, B.; Neubauer, A.C. Creating metaphors: The neural basis of figurative language production. *NeuroImage* **2013**, *90*, 99–106.

18. Lai, V.T.; Desai, R.H. The grounding of temporal metaphors. *Cortex* **2016**, *76*, 43–50.
19. Piñango, M.M.; Zhang, M.; Foster-Hanson, E.; Negishi, M.; Lacadie, C.; Constable, R.T. Metonymy as referential dependency: Psycholinguistic and neurolinguistic arguments for a unified linguistic treatment. *Cogn. Sci.* **2017**, *41*, 351–378.
20. Michl, D. Metonymies are more literal than metaphors: Evidence from ratings of German idioms. *Lang. Cogn.* **2019**, *11*, 98–124.
21. Goossens, L. *From Three Respectable Horses' Mouths: Metonymy and Conventionalization in a Diachronically Differentiated Data Base*; Pragmatics and beyond new Series; John Benjamins Publishing Company: Amsterdam, The Netherlands, 1995, pp. 175–204.
22. Taylor, J.R. *Linguistic Categorization. Prototypes in Linguistic Theory*, 2nd ed.; Basil Blackwell: Oxford, UK, 1995.
23. Annaz, D.; Van Herwegen, J.; Thomas, M.; Fishman, R.; Karmiloff-Smith, A.; Rundblad, G. Comprehension of metaphor and metonymy in children with Williams syndrome. *Int. J. Lang. Commun. Disord.* **2009**, *44*, 962–978.
24. Klepousniotou, E. The Processing of Lexical Ambiguity: Homonymy and Polysemy in the Mental Lexicon. *Brain Lang.* **2002**, *81*, 205–223.
25. Rundblad, G.; Annaz, D.; Dimitriou, D. The atypical development of metaphor and metonymy comprehension in children with autism. *Autism* **2010**, *14*, 29–46.
26. Weiland, H.; Bambini, V.; Schumacher, P.B. The role of literal meaning in figurative language comprehension: Evidence from masked priming ERP. *Front. Hum. Neurosci.* **2014**, *8*, 583.
27. Lakoff, G.; Turner, M. *More Than Cool Reason: A Field Guide to Poetic Metaphor*; University of Chicago Press: Chicago, IL, USA, 1989.
28. Sweetser, E. *From Etymology to Pragmatics: Metaphorical and Cultural Aspects of Semantic Structure*; Cambridge University Press: Cambridge, UK, 1990; Volume 54.
29. Qualls, C.D.; Bodle, H.; O'Brien, R.; Treaster, B.; Blood, G.W.; Hammer, C.S. Idioms in Rural 5th Graders: Effects of Differential Language Exposure. In Proceedings of the Annual Convention of the American Speech-Language and Hearing Association, New Orleans, LA, USA, 2001.
30. Qualls, C.D.; Harris, J.L. Age, Working Memory, Figurative Language Type, and Reading Ability. *Am. J. Speech-Language Pathol.* **2003**, *12*, 92–102.
31. Zelinski, E.M.; Hyde, J.C. Old Words, New Meanings: Aging and Sense Creation. *J. Mem. Lang.* **1996**, *35*, 689–707.
32. Levorato, M.C.; Cacciari, C. The effects of different tasks on the comprehension and production of idioms in children. *J. Exp. Child Psychol.* **1995**, *60*, 261–283.
33. Daneman, M.; Carpenter, P.A. Individual differences in working memory and reading. *J. Verbal Learn. Verbal Behav.* **1980**, *19*, 450–466.
34. Salthouse, T.A. Working memory as a processing resource in cognitive aging. *Dev. Rev.* **1990**, *10*, 101–124.
35. Searle, J.R.; Willis, Y.S. *The Construction of Social Reality*; Simon and Schuster: New York, NY, USA, 1995.
36. Fraser, G. The Pornographic Imagination in All Strange Away. *MFS Mod. Fict. Stud.* **1995**, *41*, 515–530.
37. Clark, H.H.; Gerrig, R.J. Understanding old words with new meanings. *J. Verbal Learn. Verbal Behav.* **1983**, *22*, 591–608.
38. Fregni, S.; Heidlmayr, K.; Weber, K.; Peeters, D. An Exploratory fMRI Study on Metonymy and Metaphor Processing. Master Thesis. Radboud University, The Netherlands. 2019. Available online: <http://docplayer.net/214866682-An-exploratory-fmri-study-on-metonymy-and-metaphor-processing.html> (accessed on 12 December 2021).
39. Hauptman, M.; Blank, I.; Fedorenko, E. Non-literal language processing is jointly supported by the language and Theory of Mind networks: Evidence from a novel meta-analytic fMRI approach. *BioRxiv* **2022**. doi: <https://doi.org/10.1101/2022.03.08.481056>
40. Rapp, A.M.; Wild, B. Nonliteral language in Alzheimer dementia: A review. *J. Int. Neuropsychol. Soc.* **2011**, *17*, 207–218.
41. Gregory, M.E.; Waggoner, J.E. Factors that influence metaphor comprehension skills in adulthood. *Exp. Aging Res.* **1996**, *22*, 83–98.
42. Hasher, L.; Zacks, R.T. Working memory, comprehension, and aging: A review and a new view. *Psychol. Learn. Motiv.* **1988**, *22*, 193–225.
43. Gildea, P.; Glucksberg, S. On understanding metaphor: The role of context. *J. Verbal Learn. Verbal Behav.* **1983**, *22*, 577–590.
44. Glucksberg, S.; Gildea, P.; Bookin, H.B. On understanding nonliteral speech: Can people ignore metaphors? *J. Verbal Learn. Verbal Behav.* **1982**, *21*, 85–98.
45. Tourangeau, R.; Sternberg, R.J. Aptness in metaphor. *Cogn. Psychol.* **1981**, *13*, 27–55.
46. Baddeley, A.D.; Hitch, G. Working memory. In *Psychology of Learning and Motivation*; Academic Press: Cambridge, MA, USA, 1974; Volume 8, pp. 47–89.
47. Just, M.A.; Carpenter, P.A. A capacity theory of comprehension: Individual differences in working memory. *Psychol. Rev.* **1992**, *99*, 122.
48. Baddeley, A. The episodic buffer: A new component of working memory? *Trends Cogn. Sci.* **2000**, *4*, 417–423.
49. Metcalfe, J.; Shimamura, A.P. (Eds.) *Metacognition: Knowing about Knowing*; MIT Press: Cambridge, MA, USA, 1994.
50. Baddeley, A.D. *Working Memory*; Oxford University Press: Oxford, UK, 1986.
51. Linck, J.A.; Osthus, P.; Koeth, J.T.; Bunting, M.F. Working memory and second language comprehension and production: A meta-analysis. *Psychon. Bull. Rev.* **2014**, *21*, 861–883.

52. Grundy, J.G.; Anderson, J.A.; Bialystok, E. Bilinguals have more complex EEG brain signals in occipital regions than monolinguals. *NeuroImage* **2017**, *159*, 280–288.
53. DeLuca, V.; Rothman, J.; Bialystok, E.; Pliatsikas, C. Redefining bilingualism as a spectrum of experiences that differentially affects brain structure and function. *Proc. Natl. Acad. Sci. USA* **2019**, *116*, 7565–7574.
54. Pigott, S.; Milner, B. Capacity of visual short-term memory after unilateral frontal or anterior temporal-lobe resection. *Neuropsychologia* **1994**, *32*, 969–981.
55. D’Esposito, M.; Detre, J.A.; Alsop, D.; Shin, R.K.; Atlas, S.; Grossman, M. The neural basis of the central executive system of working memory. *Nature* **1995**, *378*, 279–281.
56. Salmon, E.; Van der Linden, M.; Collette, F.; Delfiore, G.; Maquet, P.; Degueldre, C.; Maquet, P.; Degueldre, C.; Luxen, A.; Franck, G. Regional brain activity during working memory tasks. *Brain* **1996**, *119*, 1617–1625.
57. Na, D.G.; Ryu, J.W.; Byun, H.S.; Choi, D.S.; Lee, E.J.; Chung, W.I.; Cho, J.M.; Han, B.K. Functional MR Imaging of Working Memory in the Human Brain. *Korean J. Radiol.* **2000**, *1*, 19–24.
58. Lewis, S.J.; Cools, R.; Robbins, T.; Dove, A.; Barker, R.A.; Owen, A.M. Using executive heterogeneity to explore the nature of working memory deficits in Parkinson’s disease. *Neuropsychologia* **2003**, *41*, 645–654.
59. Monetta, L.; Pell, M.D. Effects of verbal working memory deficits on metaphor comprehension in patients with Parkinson’s disease. *Brain Lang.* **2007**, *101*, 80–89.
60. Bialystok, E.; Luk, G.; Peets, K.F.; Sujin, Y.A.N.G. Receptive vocabulary differences in monolingual and bilingual children. *Biling. Lang. Cogn.* **2010**, *13*, 525–531.
61. Bialystok, E.; Luk, G. Receptive vocabulary differences in monolingual and bilingual adults. *Biling. Lang. Cogn.* **2011**, *15*, 397–401.
62. Prat, C.S.; Mason, R.A.; Just, M.A. Individual differences in the neural basis of causal inferencing. *Brain Lang.* **2011**, *116*, 1–13.
63. Guo, T.; Liu, H.; Misra, M.; Kroll, J.F. Local and global inhibition in bilingual word production: fMRI evidence from Chinese–English bilinguals. *NeuroImage* **2011**, *56*, 2300–2309.
64. Martin-Rhee, M.M.; Bialystok, E. The development of two types of inhibitory control in monolingual and bilingual children. *Biling. Lang. Cogn.* **2008**, *11*, 81–93.
65. Grainger, J.; Beauvillain, C. Language blocking and lexical access in bilinguals. *Q. J. Exp. Psychol. Sect. A* **1987**, *39*, 295–319.
66. Brysbaert, M. Word recognition in bilinguals: Evidence against the existence of two separate lexicons. *Psychol. Belg.* **1998**, *38*, 163–175.
67. Dijkstra, T.; Kroll, J.F. Bilingual visual word recognition and lexical access. In *Handbook of Bilingualism: Psycholinguistic Approaches*; Oxford University Press: Oxford, UK; 2005; Volume 178, p. 201.
68. Dunn, L.; Dunn, L. *Peabody Picture Vocabulary Test*, 3rd ed.; American Guidance Service: Circle Pines, MN, USA, 1997.
69. Bialystok, E.; Craik, F.I.; Luk, G. Bilingualism: Consequences for mind and brain. *Trends Cogn. Sci.* **2012**, *16*, 240–250.
70. Prat, C.S.; Mason, R.A.; Just, M.A. An fMRI investigation of analogical mapping in metaphor comprehension: The influence of context and individual cognitive capacities on processing demands. *J. Exp. Psychol. Learn. Mem. Cogn.* **2012**, *38*, 282–294.
71. Prat, C.S.; Keller, T.A.; Just, M.A. Individual Differences in Sentence Comprehension: A Functional Magnetic Resonance Imaging Investigation of Syntactic and Lexical Processing Demands. *J. Cogn. Neurosci.* **2007**, *19*, 1950–1963.
72. Kazmerski, V.A.; Blasko, D.G.; Dessalegn, B.G. ERP and behavioral evidence of individual differences in metaphor comprehension. *Mem. Cogn.* **2003**, *31*, 673–689.
73. Rundblad, G.; Annaz, D. Development of metaphor and metonymy comprehension: Receptive vocabulary and conceptual knowledge. *Br. J. Dev. Psychol.* **2010**, *28*, 547–563.
74. Boers, F. Metaphor awareness and vocabulary retention. *Appl. Linguist.* **2000**, *21*, 553–571.
75. Kintsch, W. Predication. *Cogn. Sci.* **2001**, *25*, 173–202.
76. Landauer, T.K. Learning and representing verbal meaning: The latent semantic analysis theory. *Curr. Dir. Psychol. Sci.* **1998**, *7*, 161–164.
77. Chiappe, D.L.; Chiappe, P. The role of working memory in metaphor production and comprehension. *J. Mem. Lang.* **2007**, *56*, 172–188.
78. Stein-Smith, K. The Role of Multilingualism in Effectively Addressing Global Issues: The Sustainable Development Goals and Beyond. *Theory Pract. Lang. Stud.* **2016**, *6*, 2254.
79. Amaro, J.C.; Flynn, S.; Rothman, J. (Eds.) *Third Language Acquisition in Adulthood*; John Benjamins Publishing: Amsterdam, The Netherlands; 2012; Volume 46.
80. Rothman, J.; Niño Murcia, M. Multilingualism and identity. In *Bilingualism and Identity: Spanish at the Crossroads with Other Languages*; John Benjamins Publishing: Amsterdam, The Netherlands, 2008; pp. 301–332.
81. Rothman, J.; Halloran, B. Formal linguistic approaches to L3/Ln acquisition: A focus on morphosyntactic transfer in adult multilingualism. *Annu. Rev. Appl. Linguist.* **2013**, *33*, 51–67.
82. Slabakovaa, R.; Amarob, J.C.; Kangc, S.K. L2 regular and novel metonymy: How to curl up with a good Agatha Christie in your L2. In *Proceedings of the 37th Boston University Conference on Language Development, Boston, MA, USA*; Cascadia Press: Somerville, MA, USA, 2013; pp. 397–409.

83. Apresjan, J.D. Regular Polysemy. *Linguistics*. **1974**, *12*, 142.
84. Eckardt, R. Three ways to create metonymy: A study in locative readings of institution names. *Studi Ital. Di Linguist. Teor. Ed Appl.* **1999**, *28*, 265–282.
85. Jackendoff, R. *The Architecture of the Language Faculty*; No. 28; MIT Press: Cambridge, MA, USA, 1997.
86. Nunberg, G. The non-uniqueness of semantic solutions: Polysemy. *Linguistics Philos.* **1979**, *3*, 143–184.
87. Nunberg, G. Transfers of meaning. *J. Semant.* **1995**, *12*, 109–132.
88. Gibbs, R.W.; Jr. *Figurative Thought and Figurative Language*; Cambridge University Press: Cambridge, UK, 1994.
89. Lakoff, G.; Johnson, M. Conceptual Metaphor in Everyday Language. *J. Philos.* **1980**, *77*, 453.
90. Barcelona, A. *Metaphor and Metonymy at the Crossroads*; De Gruyter Mouton: Berlin, Germany, 2000; pp. 109–132.
91. Grice, H.P. Logic and conversation. In *Speech Acts*; Brill: Leiden, The Netherlands, 1975; pp. 41–58.
92. Searle, J.R. The intentionality of intention and action. *Inquiry* **1979**, *22*, 253–280.
93. Sperber, D.; Wilson, D. Pragmatics, modularity and mind-reading. *Mind Lang.* **2002**, *17*, 3–23.
94. Chen, E.; Widick, P.; Chatterjee, A. Functional-anatomical organization of predicate metaphor processing. *Brain Lang.* **2008**, *107*, 194–202.
95. Wakusawa, K.; Sugiura, M.; Sassa, Y.; Jeong, H.; Horie, K.; Sato, S.; Yokoyama, H.; Tsuchiya, S.; Inuma, K.; Kawashima, R. Comprehension of implicit meanings in social situations involving irony: A functional MRI study. *NeuroImage* **2007**, *37*, 1417–1426.
96. Eviatar, Z.; Just, M.A. Brain correlates of discourse processing: An fMRI investigation of irony and conventional metaphor comprehension. *Neuropsychologia* **2006**, *44*, 2348–2359.
97. Uchiyama, H.T.; Saito, D.N.; Tanabe, H.C.; Harada, T.; Seki, A.; Ohno, K.; Koeda, T.; Sadato, N. Distinction between the literal and intended meanings of sentences: A functional magnetic resonance imaging study of metaphor and sarcasm. *Cortex* **2012**, *48*, 563–583.
98. Marian, V.; Blumenfeld, H.K.; Kaushanskaya, M. The Language Experience and Proficiency Questionnaire (LEAP-Q): Assessing language profiles in bilinguals and multilinguals. *J. Speech Lang. Hear. Res.* **2007**, *50*, 940–947.
99. Conway, A.R.A.; Kane, M.J.; Bunting, M.F.; Hambrick, D.Z.; Wilhelm, O.; Engle, R.W. Working memory span tasks: A methodological review and user's guide. *Psychon. Bull. Rev.* **2005**, *12*, 769–786.
100. Brown, J.A.; Fishco, V.V.; Hanna, G. *Nelson-Denny Reading Test: Manual for Scoring and Interpretation, Forms G & H*; Riverside Publishing: Rolling Meadows, IL, USA, 1993.
101. Engle, R.W.; Carullo, J.J.; Collins, K.W. Individual Differences in Working Memory for Comprehension and Following Directions. *J. Educ. Res.* **1991**, *84*, 253–262.
102. Giora, R. Understanding figurative and literal language: The graded salience hypothesis. *Cogn. Linguistics* **1997**, *8*, 183–206.
103. Giora, R. On the priority of salient meanings: Studies of literal and figurative language. *J. Pragmat.* **1999**, *31*, 919–929.
104. Giora, R. Literal vs. figurative language: Different or equal? *J. Pragmat.* **2002**, *34*, 487–506.
105. Giora, R. *On Our Mind: Salience, Context, and Figurative Language*; Oxford University Press: Oxford, UK, 2003.
106. Giora, R.; Zaidel, E.; Soroker, N.; Batori, G.; Kasher, A. Differential effects of right-and left-hemisphere damage on understanding sarcasm and metaphor. *Metaphor. Symb.* **2000**, *15*, 63–83.
107. Yang, F.G.; Edens, J.; Simpson, C.; Krawczyk, D.C. Differences in task demands influence the hemispheric lateralization and neural correlates of metaphor. *Brain Lang.* **2009**, *111*, 114–124.
108. Yang, F.G.; Fuller, J.; Khodaparast, N.; Krawczyk, D.C. Figurative language processing after traumatic brain injury in adults: A preliminary study. *Neuropsychologia* **2010**, *48*, 1923–1929.
109. Zhou, H.; Rossi, S.; Chen, B. Effects of working memory capacity and tasks in processing L2 complex sentence: Evidence from Chinese-English bilinguals. *Front. Psychol.* **2017**, *8*, 595.
110. Ratcliff, R. Methods for dealing with reaction time outliers. *Psychol. Bull.* **1993**, *114*, 510–532.
111. Bates, D.; Maechler, M.; Bolker, B.; Walker, S.; Christensen, R.H.B.; Singmann, H.; Dai, B.; Scheipl, F.; Grothendieck, G. Package 'lme4'. In *Linear Mixed-Effects Models Using S4 Classes*; R Package Version1; 2011; pp. 1–48. Available online: <https://cran.r-project.org/web/packages/lme4/lme4.pdf> (accessed on 27 February 2022).
112. Lakoff, G. The Neural Theory of Metaphor. *Law Rhetor. Ejournal.* **2009**. Available online: https://papers.ssrn.com/sol3/papers.cfm?abstract_id=1437794 (accessed on 27 February 2022).
113. Gallagher, H.L.; Happé, F.; Brunswick, N.; Fletcher, P.C.; Frith, U.; Frith, C.D. Reading the mind in cartoons and stories: An fMRI study of 'theory of mind' in verbal and nonverbal tasks. *Neuropsychologia* **2000**, *38*, 11–21.
114. Hale, C.M.; Tager-Flusberg, H. The influence of language on theory of mind: A training study. *Dev. Sci.* **2003**, *6*, 346–359.
115. Cieślacka, A.B. Bilingual figurative language processing. In *Psychology of Bilingualism*; Springer: Cham, Switzerland, 2017; pp. 75–118.
116. Silani, G.; Lamm, C.; Ruff, C.; Singer, T. Right Supramarginal Gyrus Is Crucial to Overcome Emotional Egocentricity Bias in Social Judgments. *J. Neurosci.* **2013**, *33*, 15466–15476.
117. Leiner, H.C.; Leiner, A.L.; Dow, R.S. Cognitive and language functions of the human cerebellum. *Trends Neurosci.* **1993**, *16*, 444–447.

118. De Smet, H.J.; Paquier, P.; Verhoeven, J.; Mariën, P. The cerebellum: Its role in language and related cognitive and affective functions. *Brain Lang.* **2013**, *127*, 334–342.
119. Botez-Marquard, T.; Léveillé, J.; Botez, M. Neuropsychological Functioning in Unilateral Cerebellar Damage. *Can. J. Neurol. Sci./J. Can. des Sci. Neurol.* **1994**, *21*, 353–357.
120. Gottwald, B.; Wilde, B.; Mihajlovic, Z.; Mehdorn, H.M. Evidence for distinct cognitive deficits after focal cerebellar lesions. *J. Neurol. Neurosurg. Psychiatry* **2004**, *75*, 1524–1531.
121. Cook, M.; Murdoch, B.; Cahill, L.; Whelan, B. Higher-level language deficits resulting from left primary cerebellar lesions. *Aphasiology* **2004**, *18*, 771–784.
122. Whelan, B.-M.; Murdoch, B. Unravelling subcortical linguistic substrates: Comparison of thalamic versus cerebellar cognitive-linguistic regulation mechanisms. *Aphasiology* **2005**, *19*, 1097–1106.
123. Murdoch, B.E.; Whelan, B.-M. Language Disorders Subsequent to Left Cerebellar Lesions: A Case for Bilateral Cerebellar Involvement in Language? *Folia Phoniatr. Logop.* **2007**, *59*, 184–189.
124. Cavanna, A.E.; Trimble, M.R. The precuneus: A review of its functional anatomy and behavioural correlates. *Brain* **2006**, *129*, 564–583.
125. Bohrn, I.C.; Altmann, U.; Jacobs, A.M. Looking at the brains behind figurative language—A quantitative meta-analysis of neuroimaging studies on metaphor, idiom, and irony processing. *Neuropsychologia* **2012**, *50*, 2669–2683.
126. Virshup, E.; Virshup, B. Visual imagery: The language of the right brain. In *Imagery*; Springer: Boston, MA, USA, 1980; pp. 107–112.
127. He, K. *A Theory of Creative Thinking*; Springer: Beijing, China, 2017.
128. Rapp, A.M.; Mutschler, D.E.; Erb, M. Where in the brain is nonliteral language? A coordinate-based meta-analysis of functional magnetic resonance imaging studies. *NeuroImage* **2012**, *63*, 600–610.
129. Just, M.A.; Carpenter, P.A.; Keller, T.A.; Eddy, W.F.; Thulborn, K.R. Brain activation modulated by sentence comprehension. *Science* **1996**, *274*, 114–116.
130. Prat, C.S.; Long, D.L.; Baynes, K. The representation of discourse in the two hemispheres: An individual differences investigation. *Brain Lang.* **2007**, *100*, 283–294.
131. Prat, C.S.; Just, M.A. Exploring the neural dynamics underpinning individual differences in sentence comprehension. *Cereb. Cortex* **2011**, *21*, 1747–1760.
132. Segal, D.; Gollan, T.H. What's left for balanced bilinguals? Language proficiency and item familiarity affect left-hemisphere specialization in metaphor processing. *Neuropsychology* **2018**, *32*, 866–879.
133. Dodds, C.M.; Morein-Zamir, S.; Robbins, T.W. Dissociating inhibition, attention, and response control in the frontoparietal network using functional magnetic resonance imaging. *Cereb. Cortex* **2011**, *21*, 1155–1165.
134. Haldane, M.; Cunningham, G.; Androustos, C.; Frangou, S. Structural brain correlates of response inhibition in Bipolar Disorder I. *J. Psychopharmacol.* **2008**, *22*, 138–143.
135. Tomasi, D.; Ernst, T.; Caparelli, E.C.; Chang, L. Common deactivation patterns during working memory and visual attention tasks: An intra-subject fMRI study at 4 Tesla. *Hum. Brain Mapp.* **2006**, *27*, 694–705.
136. Lagopoulos, J.; Ivanovski, B.; Malhi, G.S. An event-related functional MRI study of working memory in euthymic bipolar disorder. *J. Psychiatry Neurosci.* **2007**, *32*, 174–184.
137. Miyake, A.; Just, M.A.; Carpenter, P.A. Working memory constraints on the resolution of lexical ambiguity: Maintaining multiple interpretations in neutral contexts. *J. Mem. Lang.* **1994**, *33*, 175–202.
138. Pearlmuter, N.J.; MacDonald, M.C. Individual differences and probabilistic constraints in syntactic ambiguity resolution. *J. Mem. Lang.* **1995**, *34*, 521–542.
139. Farmer, T.A.; Fine, A.B.; Misyak, J.B.; Christiansen, M.H. Reading Span Task Performance, Linguistic Experience, and the Processing of Unexpected Syntactic Events. *Q. J. Exp. Psychol.* **2017**, *70*, 413–433.
140. Bellebaum, C.; Daum, I. Cerebellar involvement in executive control. *Cerebellum* **2007**, *6*, 184–192.
141. Desmond, J.E.; A Fiez, J. Neuroimaging studies of the cerebellum: Language, learning and memory. *Trends Cogn. Sci.* **1998**, *2*, 355–362.
142. Hayter, A.; Langdon, D.; Ramnani, N. Cerebellar contributions to working memory. *NeuroImage* **2007**, *36*, 943–954.
143. Osaka, M.; Osaka, N.; Kondo, H.; Morishita, M.; Fukuyama, H.; Aso, T.; Shibasaki, H. The neural basis of individual differences in working memory capacity: An fMRI study. *NeuroImage* **2003**, *18*, 789–797.
144. Baier, B.; Karnath, H.-O.; Dieterich, M.; Birklein, F.; Heinze, C.; Müller, N.G. Keeping Memory Clear and Stable—The Contribution of Human Basal Ganglia and Prefrontal Cortex to Working Memory. *J. Neurosci.* **2010**, *30*, 9788–9792.
145. Ell, S.W.; Marchant, N.L.; Ivry, R.B. Focal putamen lesions impair learning in rule-based, but not information-integration categorization tasks. *Neuropsychologia* **2006**, *44*, 1737–1751.
146. Cardillo, E.R.; Watson, C.; Schmidt, G.L.; Kranjec, A.; Chatterjee, A. From novel to familiar: Tuning the brain for metaphors. *NeuroImage* **2012**, *59*, 3212–3221.
147. Subramaniam, K.; Faust, M.; Beeman, M.; Mashal, N. The Repetition Paradigm: Enhancement of novel metaphors and suppression of conventional metaphors in the left inferior parietal lobe. *Neuropsychologia* **2012**, *50*, 2705–2719.

-
148. Leung, H.C.; Gore, J.C.; Goldman-Rakic, P.S. Sustained mnemonic response in the human middle frontal gyrus during on-line storage of spatial memoranda. *J. Cogn. Neurosci.* **2002**, *14*, 659–671.
 149. Abutalebi, J.; Annoni, J.-M.; Zimine, I.; Pegna, A.; Seghier, M.; Lee-Jahnke, H.; Lazeyras, F.; Cappa, S.; Khateb, A. Language Control and Lexical Competition in Bilinguals: An Event-Related fMRI Study. *Cereb. Cortex* **2007**, *18*, 1496–1505.
 150. Abutalebi, J.; Green, D. Bilingual language production: The neurocognition of language representation and control. *J. Neurolinguistics* **2007**, *20*, 242–275.
 151. Lakoff, G.; Johnson, M. The metaphorical structure of the human conceptual system. *Cogn. Sci.* **1980**, *4*, 195–208.
 152. Gibbs, R.W.; Bogdanovich, J.M.; Sykes, J.R.; Barr, D.J. Metaphor in Idiom Comprehension. *J. Mem. Lang.* **1997**, *37*, 141–154.
 153. Chen, Y.; Lai, H. EFL learners' awareness of metonymy-metaphor continuum. *Lang. Aware.* **2012**, *21*, 235–248.
 154. Ruigrok, A.N.; Salimi-Khorshidi, G.; Lai, M.-C.; Baron-Cohen, S.; Lombardo, M.; Tait, R.J.; Suckling, J. A meta-analysis of sex differences in human brain structure. *Neurosci. Biobehav. Rev.* **2013**, *39*, 34–50.
 155. Shaywitz, B.A.; Shaywitz, S.E.; Pugh, K.R.; Constable, R.T.; Skudlarski, P.; Fulbright, R.K.; Bronen, R.A.; Fletcher, J.M.; Shankweiler, D.P.; Katz, L.; et al. Sex differences in the functional organization of the brain for language. *Nature* **1995**, *373*, 607–609.
 156. Horga, G.; Kaur, T.; Peterson, B.S. Annual Research Review: Current limitations and future directions in MRI studies of child- and adult-onset developmental psychopathologies. *J. Child Psychol. Psychiatry* **2014**, *55*, 659–680.
 157. Juffs, A. Representation, Processing and Working Memory in a Second Language. *Trans. Philol. Soc.* **2004**, *102*, 199–225.
 158. Juffs, A. Working memory, second language acquisition and low-educated second language and literacy learners. *LOT Occas. Ser.* **2006**, *6*, 89–104.
 159. Juffs, A.; Harrington, M. Aspects of working memory in L2 learning. *Lang. Teach.* **2011**, *44*, 137–166.
 160. Sagarra, N. From CALL to face-to-face interaction: The effect of computer-delivered recasts and working memory on L2 development. In *Conversational Interaction in Second Language Acquisition: A Collection of Empirical Studies*; Oxford University Press: New York, NY, USA, 2007; pp. 229–248.
 161. Havik, E.; Roberts, L.; Van Hout, R.; Schreuder, R.; Haverkort, M. Processing Subject-Object Ambiguities in the L2: A Self-Paced Reading Study with German L2 Learners of Dutch. *Lang. Learn.* **2009**, *59*, 73–112.
 162. Badre, D.; Wagner, A.D. Semantic retrieval, mnemonic control, and prefrontal cortex. *Behav. Cogn. Neurosci. Rev.* **2002**, *1*, 206–218.
 163. Gabrieli, J.D.E.; Poldrack, R.A.; Desmond, J.E. The role of left prefrontal cortex in language and memory. *Proc. Natl. Acad. Sci. USA* **1998**, *95*, 906–913.