

Supplementary Materials

Nano-Ru supported on Ni nanowires for low-temperature carbon dioxide methanation

Tomasz Siudyga^{1,*}, Maciej Kapkowski¹, Dawid Janas², Tomasz Wasiak², Rafał Sitko¹,
Maciej Zubko^{3,7}, Jacek Szade⁴, Katarzyna Balin⁴, Joanna Klimontko⁴, Daniel Lach¹,
Judyta Popiel⁵, Adam Smoliński⁶, Jaroslaw Polanski^{1*}

¹ Faculty of Science and Technology, Institute of Chemistry, University of Silesia, Szkolna 9, 40-006 Katowice, Poland

tomasz.siudyga@us.edu.pl (T.S.); maciej.kapkowski@us.edu.pl (M.K.); rafal.sitko@us.edu.pl (R.S.); daniel.lach@us.edu.pl (D.L.); polanski@us.edu.pl (J.Pol.)

² Department of Chemistry, Silesian University of Technology, B. Krzywoustego 4, 44-100 Gliwice, Poland

dawid.janas@polsl.pl (D.J.); tomasz.wasiak@polsl.pl (T.W.)

³ Faculty of Science and Technology, Institute of Materials Engineering, University of Silesia, 75 Pułku Piechoty 1A, 41-500 Chorzów, Poland

maciej.zubko@us.edu.pl (M.Z.)

⁴ Faculty of Science and Technology, August Chełkowski Institute of Physics, University of Silesia, 75 Pułku Piechoty 1A, 41-500 Chorzów, Poland

jacek.szade@us.edu.pl (J.S.); joanna.klimontko@us.edu.pl (J.K.); katarzyna.balin@us.edu.pl (K.B.)

⁵ BIT-MED Sp. z o.o., Polna 23, 42-400 Zawiercie, Poland

judytapopiel@gmail.com (J.Pop.)

⁶ Central Mining Institute, Plac Gwarkow 1, 40-166 Katowice, Poland

smolin@gig.katowice.pl (A.S.)

⁷ Faculty of Science, Department of Physics, University of Hradec Králové, Rokitanského 62, 500 03, Hradec Králové, Czech Republic

maciej.zubko@uhk.cz (M.Z.)

* Correspondence: tomasz.siudyga@us.edu.pl (T.S.) Tel.: +48 32 349 77 28

or jaroslaw.polanski@us.edu.pl (J.Pol.); Tel.: +48 32 259 99 78

Table of contents

Figure S1 Positive TOF-SIMS spectra obtained from sample 1 before (blue) and 2 after (red) process presented in narrowed mass range (a) 5-40 u (b) 40-80 u, (c) 80-145 u. The coincidental cover of some Ni and carbon species is possible, e.g., O-CO₂⁺ (m/z=60) and ⁶⁰Ni⁺ (m/z=60).

Figure S2 Negative TOF-SIMS spectra obtained from sample before (blue) and after (red) process presented in narrowed mass range (a) 5-40 u, (b) 40-80 u, (c) 80-151 u.

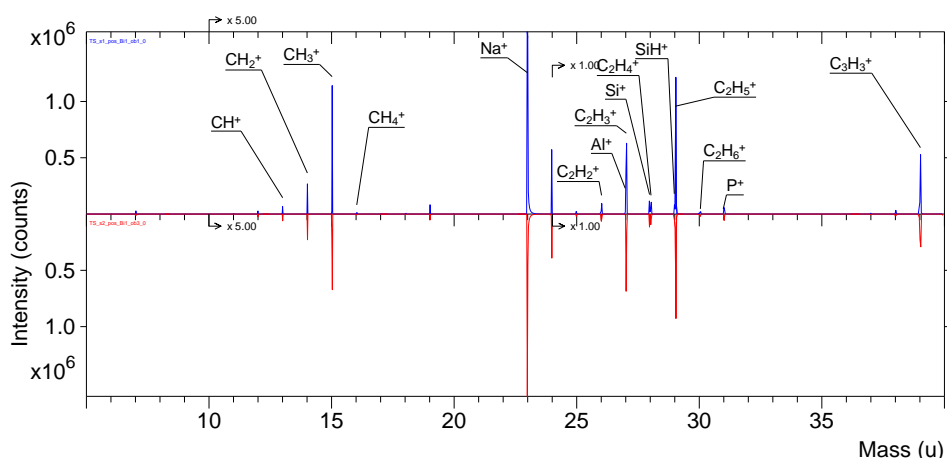
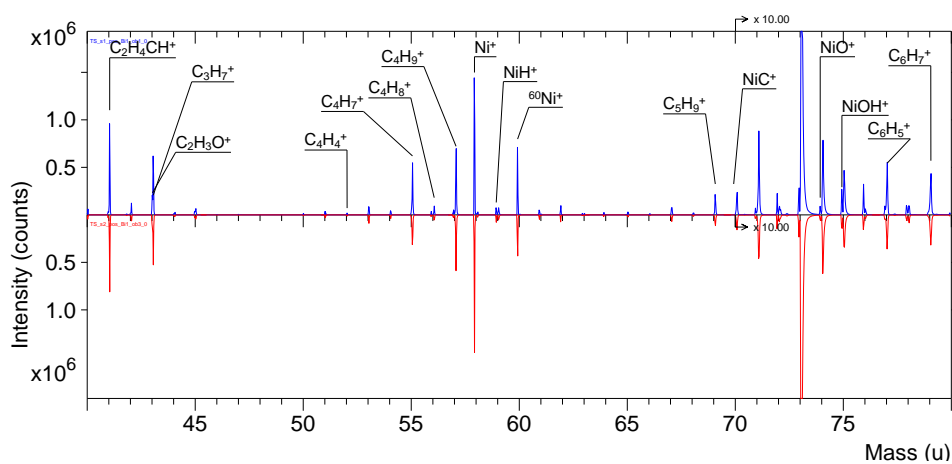
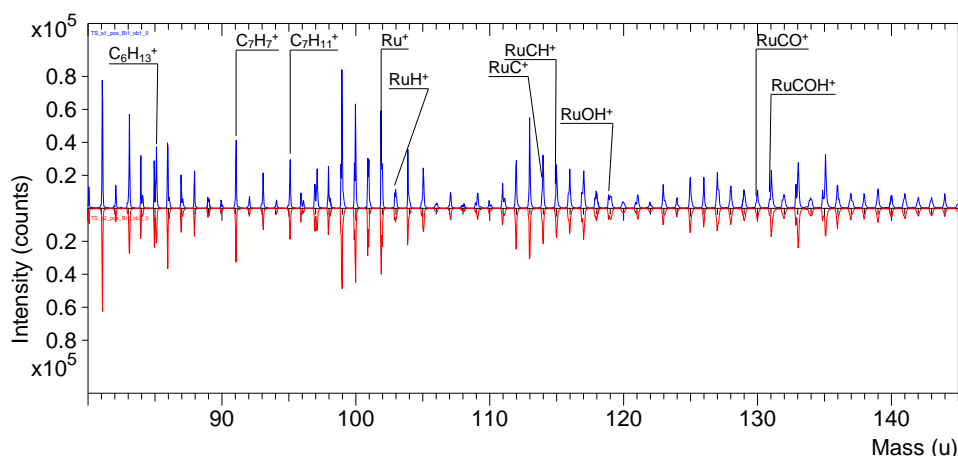
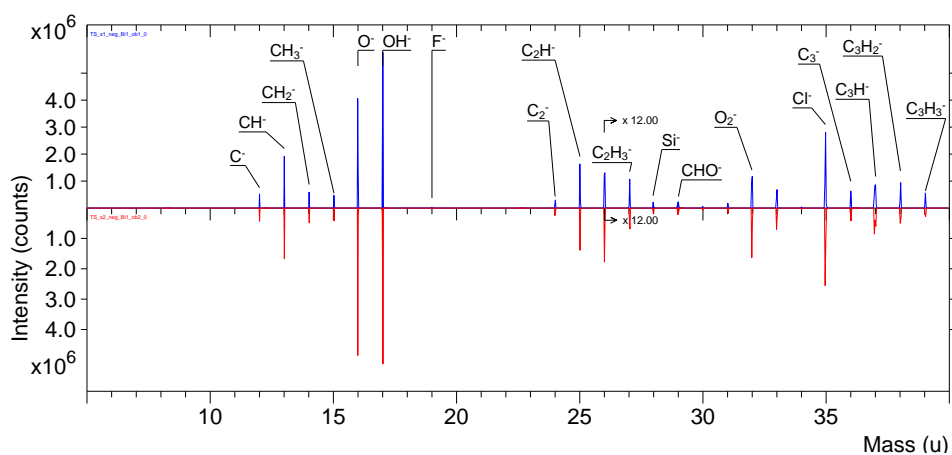
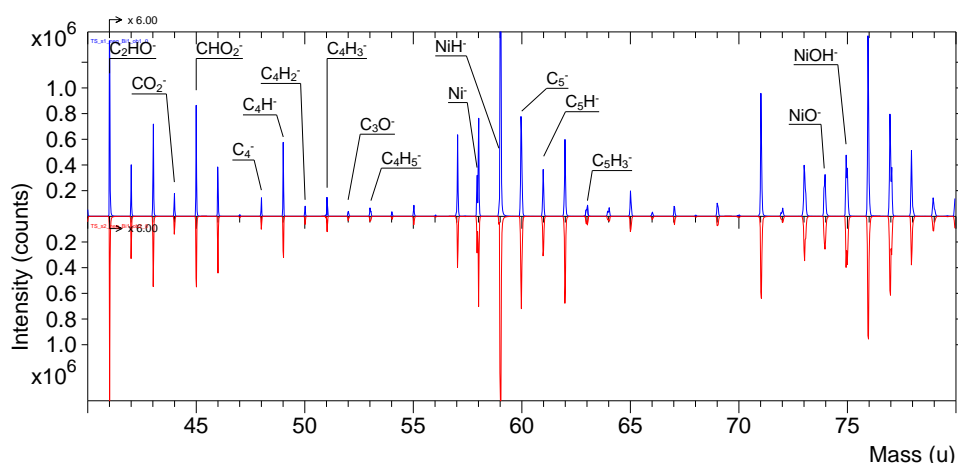
A**B****C**

Figure S1 Positive TOF-SIMS spectra obtained from sample 1 before (blue) and 2 after (red) process presented in narrowed mass range (A) 5-40 u (B) 40-80 u, (C) 80-145 u. The coincidental cover of some Ni and carbon species is possible, e.g., O-CO_2^+ ($m/z=60$) and $^{60}\text{Ni}^+$ ($m/z=60$).

A



B



C

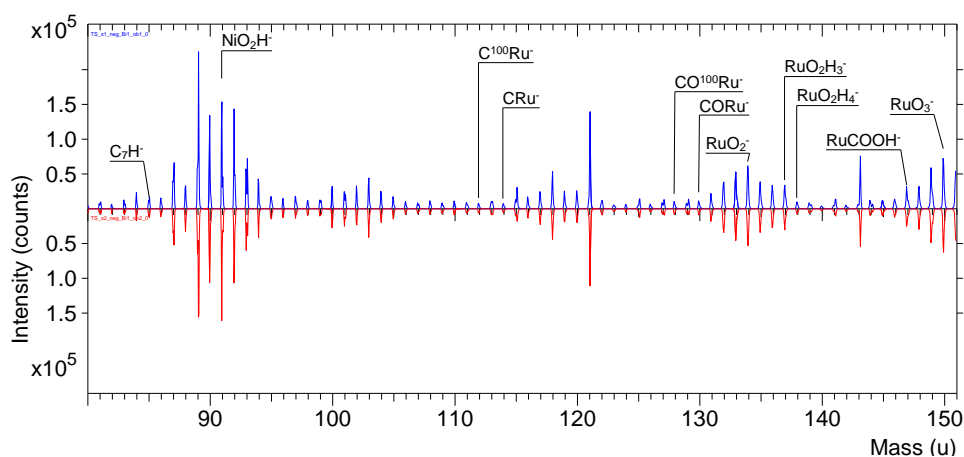


Figure S2 Negative TOF-SIMS spectra obtained from sample before (blue) and after (red) process presented in narrowed mass range (A) 5-40 u, (B) 40-80 u, (C) 80-151 u.