

Supplementary Materials

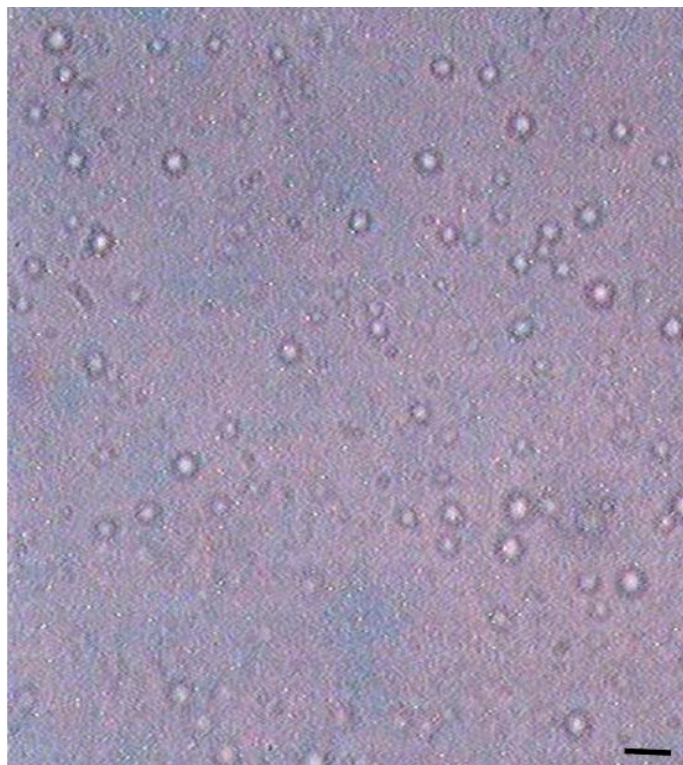


Figure S1. Microscopic photograph of a typical macro-emulsion. Scale bar denotes 1 μm .

Table S1. Values of skin roughness (SEr), skin scaliness (SEsc), skin smoothness (SEsm) and skin wrinkles (SEw) after chronically application of active formulation (AF) and placebo (P) in volunteers cheeks ($n = 13$). No statistical significant ($p > 0.05$) difference was found among the values with respect to time.

SELS Parameters	TIME 0		MONTH 1		MONTH 2		MONTH 3	
	AF	P	AF	P	AF	P	AF	P
Mean SEr \pm SD	2.90 \pm 0.096	2.94 \pm 0.102	2.87 \pm 0.092	2.94 \pm 0.101	2.82 \pm 0.093	2.88 \pm 0.097	2.78 \pm 0.091	2.92 \pm 0.102
Mean SEsc \pm SD	1.65 \pm 0.026	1.68 \pm 0.023	1.61 \pm 0.024	1.67 \pm 0.024	1.59 \pm 0.023	1.66 \pm 0.024	1.56 \pm 0.023	1.66 \pm 0.024
Mean SEsm \pm SD	98.63 \pm 2.547	98.62 \pm 2.524	96.63 \pm 2.582	98.81 \pm 2.516	94.48 \pm 2.505	98.42 \pm 2.494	91.90 \pm 2.530	98.51 \pm 2.234
Mean SEw \pm SD	60.43 \pm 1.133	59.82 \pm 1.305	60.65 \pm 1.104	60.03 \pm 1.287	58.94 \pm 1.174	60.04 \pm 1.262	58.01 \pm 1.141	59.79 \pm 1.303

© 2015 by the authors; licensee MDPI, Basel, Switzerland. This article is an open access article distributed under the terms and conditions of the Creative Commons Attribution license (<http://creativecommons.org/licenses/by/4.0/>).