




Communication

Metal Concentration in *Palaemon elegans* along the Coastal Areas of Gran Canaria (Canary Islands): Potential Bioindicator of Pollution

Enrique Lozano-Bilbao ^{1,2,*} , José Antonio González ², José María Lorenzo ², Thabatha Thorne-Bazarrá ^{1,3}, Arturo Hardisson ^{1,3}, Carmen Rubio ^{1,3} , Dailos González-Weller ^{1,4}, Soraya Paz ^{1,3} and Ángel J. Gutiérrez ^{1,3} 

- ¹ Grupo Interuniversitario de Toxicología Ambiental y Seguridad de los Alimentos y Medicamentos, Facultad de Medicina, Universidad de La Laguna (ULL), Campus de Ofra, 38071 San Cristóbal de La Laguna, Spain; ttabatha@gmail.com (T.T.-B.); atorre@ull.edu.es (A.H.); crubio@ull.edu.es (C.R.); dgonwel@gmail.com (D.G.-W.); spazmont@ull.edu.es (S.P.); ajguti@ull.edu.es (Á.J.G.)
 - ² Grupo de Investigación en Ecología Marina Aplicada y Pesquerías (EMAP), Instituto de Investigación de Estudios Ambientales y Recursos Naturales (i-UNAT), Universidad de Las Palmas de Gran Canaria (ULPGC), Campus de Tafira, 35017 Las Palmas de Gran Canaria, Spain; pepe.solea@ulpgc.es (J.A.G.); josemaria.lorenzo@ulpgc.es (J.M.L.)
 - ³ Departamento de Obstetricia y Ginecología, Pediatría, Medicina Preventiva y Salud Pública, Toxicología, Medicina Legal y Forense y Parasitología, Área de Toxicología, Universidad de La Laguna (ULL), Campus de Ofra, 38071 San Cristóbal de La Laguna, Spain
 - ⁴ Servicio Público Canario de Salud, Laboratorio Central, 38006 Santa Cruz de Tenerife, Spain
- * Correspondence: enrique.lozano@ulpgc.es

Abstract: Ocean pollution poses a significant issue in the marine ecosystem. Coastal areas are particularly impacted by this pollution, and consequently, organisms associated with these coasts bear the brunt of its effects. Therefore, the presence of robust bioindicators, such as the shrimp species *Palaemon elegans*, is critically important. In this study, 20 *P. elegans* specimens were examined in each of the five areas on Gran Canaria Island. Water samples were collected to assess the potential existence of elevated concentrations. Significant discrepancies were observed in the levels of Al and Li across all zones, except those previously mentioned. The highest concentrations were recorded in Arguineguín (Southern sector), reaching 49.14 ± 4.51 mg/kg (Al) and 47.64 ± 2.86 mg/kg (Li). The authors contend that *P. elegans* proves to be a reliable bioindicator for tourist and port-related pollution, specifically for the metals Al, Zn, Cd, Pb, Ni, Fe, B, and Li analyzed in this research.

Keywords: biomonitor; shrimp; ICO-OES; trace elements



Citation: Lozano-Bilbao, E.; González, J.A.; Lorenzo, J.M.; Thorne-Bazarrá, T.; Hardisson, A.; Rubio, C.; González-Weller, D.; Paz, S.; Gutiérrez, Á.J. Metal Concentration in *Palaemon elegans* along the Coastal Areas of Gran Canaria (Canary Islands): Potential Bioindicator of Pollution. *Diversity* **2023**, *15*, 1151. <https://doi.org/10.3390/d15111151>

Academic Editor: Bert W. Hoeksema

Received: 12 October 2023
Revised: 17 November 2023
Accepted: 18 November 2023
Published: 20 November 2023



Copyright: © 2023 by the authors. Licensee MDPI, Basel, Switzerland. This article is an open access article distributed under the terms and conditions of the Creative Commons Attribution (CC BY) license (<https://creativecommons.org/licenses/by/4.0/>).

1. Introduction

Crustaceans play a vital role as a significant fishing resource in numerous countries, serving as a key source of sustenance and a well-established industry contributing to economies worldwide. Diverse methods are utilized to capture these resources, including trawling, gill nets, pots, traps, traditional shellfishing, and spearfishing. Ensuring the sustainable management of this resource is imperative, taking into account the varied interests of stakeholders residing in coastal areas or relying on marine and coastal resources. These stakeholders encompass fishermen, fishing industries, aquaculturists, handling and trade companies, educators, local authorities, and consumers [1–6]. The management of marine resources revolves around the principles of conservation and sustainable utilization. This involves the implementation of conservation strategies, regulation of fishing activities, and addressing pollution. Furthermore, it entails the preservation of biological diversity and wildlife, controlling overfishing, protecting marine ecosystems, and preventing anthropogenic pollution [7–12].

Marine pollution arises from the infiltration of toxic substances and waste into oceans, leading to various adverse effects on the health of marine organisms, human communities relying on them for sustenance, and various adverse effects on overall environment. These harmful substances stem from a variety of sources, including agriculture, industry, sewage discharge, shipping activities, atmospheric debris, oil extraction, and fishing operations [13–19]. The repercussions of marine pollution are extensive, encompassing a range of issues such as habitat destruction, alterations in the oceans' chemical composition, depletion of wildlife populations, and contamination of food sources. Additionally, marine pollution can pose health risks to humans, including poisoning from mercury, lead, and cadmium, as well as foodborne illnesses [20–22]. Given these concerns, it is crucial to conduct periodic monitoring of coastal and pelagic fishing resources to assess the levels of metals and trace elements. The present study examined a sample of the pool shrimp *Palaemon elegans* Rathke, 1836, obtained from coastal waters surrounding the island of Gran Canaria (Canary Islands), and aimed to evaluate its potential as a bioindicator of coastal pollution.

2. Material and Methods

For the monitoring study, a total of 20 *Palaemon elegans* samples were collected from each designated zone along the coastal periphery of Gran Canaria, and the areas have been chosen based on the topography of the island of Gran Canaria, taking into account pollution sources as well. Bañaderos and El Confital were selected because they are the two areas with the lowest tourist density, resulting in significantly lower pollution levels. Arguineguín was chosen because it is the most touristic area among the selected ones, leading to higher pollution due to tourist pressure. El Confital was chosen due to its proximity to the island's capital and, therefore, its exposure to strong tourist pressure. Agaete was chosen because it is located in a port with high maritime traffic. Moreover, we gathered 10 water samples from the identical puddles where we retrieved the shrimp ($n = 50$) in February 2022 (Figure 1). The choice of these zones was deliberate, comprising Confital, recognized as a legislatively protected area; Agaete with a bustling ferry port; Bañaderos situated on the less anthropogenically pressured northern slope; Arinaga positioned on the southwestern slope abundant with factories; and Arguineguín on the southern slope known for its high tourist population. The total length of each specimen was measured in millimeters (mm) using a digital caliper.

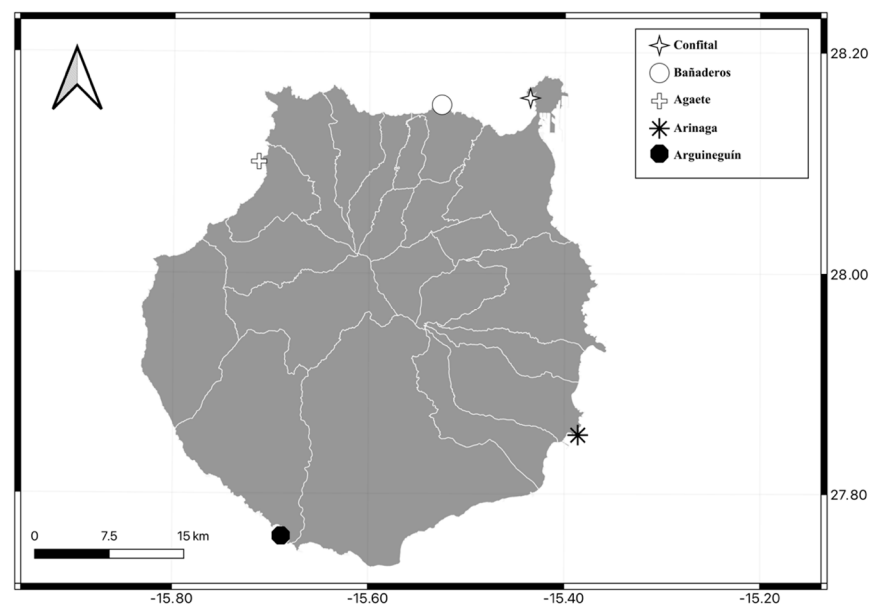


Figure 1. Map of Gran Canaria showing study areas.

2.1. Sample Preparation

For analytical procedures, a 0.5 g sample of the abdomen was extracted from each shrimp specimen. Concurrently, water samples were collected from the same intertidal pools where the study specimens were captured, utilizing 25 mL of water for the sampling process. The sample preparation entailed initial drying in an oven at 70 °C, followed by ashing in a muffle furnace at 450 ± 25 °C. Subsequently, a solution comprising 10 mL of 1.5% HNO₃ was introduced to each sample. The subsequent analysis of the samples was performed utilizing inductively coupled plasma-optical emission spectrophotometry (ICP-OES) employing a Thermo Scientific ICAP 6300 Duo model (Waltham, MA, USA) equipped with an Auto Sampler (CETAX model ASX-520). Al, Zn, Cd, Pb, Ni, Fe, B, and Li were analyzed because they are anthropogenic metals when found in high concentrations [23]. Table 1 contains details regarding the limits of detection. To ensure the precision and accuracy of the analytical measurements, quality control measures were rigorously enforced. This encompassed the use of blank samples as controls and the incorporation of reference materials like ERM-CE278 mussel tissue and SRM1566b oyster tissue in the analysis. Notably, the recovery rate achieved using these reference materials exceeded 98%.

Table 1. Limits of detection and quantification of the analyzed elements.

Metal	Wavelength (nm)	Limit of Detection (mg/L)	Limit of Quantification (mg/L)
Al	167.0	0.004	0.012
B	249.7	0.003	0.012
Cd	226.5	0.0003	0.001
Fe	259.9	0.002	0.005
Li	670.8	0.005	0.013
Ni	231.6	0.0007	0.003
Pb	220.3	0.0003	0.001
Zn	206.2	0.002	0.007

2.2. Statistical Analysis

To investigate the potential differences in heavy metals and trace metals content and relative composition among the analyzed tissue samples, a permutational multivariate analysis of variance (PERMANOVA) was conducted. Euclidean distances were utilized for the analysis. The study employed a one-way design with the fixed factor “zone”, which consisted of five variation levels (Confital, Bañaderos, Agaete, Arinaga, and Arguineguín). The analysis incorporated the following variables: Al, Zn, Cd, Pb, Ni, Fe, B, and Li. To examine the dissimilarities between the zones, a principal coordinate analysis (PCoA) was employed. This analysis represented the metals that best accounted for the data variability as vectors. Additionally, one-way permutational analyses of variance were performed using Euclidean distances based on the raw data. A total of 9999 permutations of interchangeable units were employed in the analyses. Pairwise post hoc comparisons were conducted to assess differences between significant factors at a *p*-value threshold of <0.05. The statistical packages PRIMER 7 and PERMANOVA p v.1.0.1 were used for the statistical analyses [24,25].

3. Results

Table 2 presents the mean total length and descriptive statistics for the metal content of the shrimp samples. Shrimp specimens from Bañaderos exhibited the longest mean length. In terms of metal and trace element concentrations, Arguineguín had the highest levels, followed by Agaete. Table 3 displays the outcomes of the PERMANOVA analyses. No noteworthy disparities were observed in the total length among the sampling areas. Consequently, the total length of the specimens will not be factored into the analysis of metals and trace elements. Moreover, in the statistical examination of each metal and trace element, no significant differences emerged for any of the elements between Bañaderos

(Northern sector) and Arinaga (Eastern sector), nor between Confital (NE sector) and Agaete (NW sector). Al and Li presented significant differences between all the zones, except for those already mentioned, with the highest concentrations being registered in Arguineguín (Southern sector) with 49.141 ± 4.511 mg/kg (Al) and 47.640 ± 2.865 mg/kg (Li). The samples from Arguineguín had higher concentrations of all metals than the other four zones, followed by those from Agaete.

Table 2. Descriptive statistics of all the elements analyzed in each sampling zone (Mean, standard deviation, minimum, and maximum). Total length (TL, cm) and metal content (mg/kg).

		Confital	Bañaderos	Agaete	Arinaga	Arguineguín
TL	Mean	3.72	3.78	3.76	3.72	3.72
	Sd	0.16	0.28	0.27	0.16	0.21
	Min	3.5	3.4	3.4	3.5	3.4
	Max	4.0	4.2	4.2	4.0	4.0
Al	Mean	40.70	36.30	42.23	36.52	49.14
	Sd	2.27	2.57	4.12	3.58	4.51
	Min	36.68	32.04	34.86	31.39	42.25
	Max	43.27	39.34	47.08	41.94	56.43
Zn	Mean	19.23	17.14	19.92	17.18	22.82
	Sd	2.22	2.07	2.63	1.81	1.53
	Min	16.26	14.78	17.15	15.17	20.78
	Max	23.68	21.53	25.77	21.10	25.70
Cd	Mean	0.073	0.065	0.075	0.065	0.084
	Sd	0.016	0.014	0.017	0.013	0.014
	Min	0.058	0.052	0.057	0.051	0.070
	Max	0.096	0.088	0.105	0.086	0.109
Pb	Mean	0.132	0.118	0.137	0.118	0.152
	Sd	0.028	0.026	0.033	0.026	0.016
	Min	0.107	0.098	0.109	0.096	0.132
	Max	0.201	0.182	0.218	0.179	0.184
Ni	Mean	0.590	0.525	0.609	0.523	0.695
	Sd	0.186	0.164	0.188	0.152	0.222
	Min	0.376	0.342	0.409	0.369	0.496
	Max	0.903	0.789	0.928	0.773	1.094
Fe	Mean	20.21	18.01	20.98	18.0	22.974
	Sd	3.27	2.98	3.94	2.641	0.92
	Min	16.29	14.81	17.73	15.97	21.49
	Max	27.75	25.22	30.19	24.72	24.62
B	Mean	4.128	3.681	4.265	3.687	5.04
	Sd	0.840	0.768	0.890	0.721	0.442
	Min	2.839	2.479	3.089	2.430	4.451
	Max	5.789	5.263	6.299	5.158	5.657
Li	Mean	38.59	34.39	39.95	34.56	47.64
	Sd	2.51	2.34	3.23	2.93	2.86
	Min	34.93	31.75	36.24	31.11	43.92
	Max	42.17	38.33	45.88	40.28	54.20

Table 3. Results of pairwise tests examining the significant factor “Zone” obtained in a one-way ANOVA analyzing the metal content variation and Total length (TL). * $p < 0.05$.

Groups	TL	Al	Zn	Cd	Pb	Ni	Fe	B	Li
Bañaderos, Confital	0.688	0.009 *	0.088	0.306	0.348	0.483	0.203	0.327	0.009 *
Bañaderos, Agaete	0.882	0.007 *	0.034 *	0.237	0.235	0.352	0.131	0.215	0.001 *
Bañaderos, Arinaga	0.706	0.923	0.967	0.973	0.956	0.997	0.974	0.985	0.912
Bañaderos, Arguineguín	0.696	0.001 *	0.002 *	0.015 *	0.007 *	0.127	0.003 *	0.003 *	0.001 *
Confital, Agaete	0.839	0.424	0.609	0.725	0.721	0.832	0.706	0.760	0.399
Confital, Arinaga	0.986	0.020 *	0.077	0.273	0.321	0.484	0.184	0.320	0.022 *
Confital, Arguineguín	0.955	0.002 *	0.009 *	0.115	0.079	0.311	0.048 *	0.029 *	0.001 *
Agaete, Arinaga	0.857	0.019 *	0.036 *	0.200	0.267	0.342	0.119	0.212	0.002 *
Agaete, Arguineguín	0.842	0.007 *	0.031 *	0.276	0.217	0.446	0.156	0.041 *	0.003 *
Arinaga, Arguineguín	0.963	0.001 *	0.002 *	0.016 *	0.009 *	0.042 *	0.002 *	0.001 *	0.001 *

These findings were prominently evident in the PCoA analysis, elucidating approximately 89.1% of the overall data variability (Figure 2). The sample distribution distinctly showcased a notable disparity in heavy metal content within the Arguineguín area in comparison to the other four zones. While these groups exhibited some overlap, indicating a resemblance in heavy metal levels among them, the Arguineguín area stood out. The metals delineating the observed data variability were visually represented as vectors in the PCoA plot. Particularly, aluminum (Al), iron (Fe), lithium (Li), and zinc (Zn) demonstrated a discernible ascending trend in the Arguineguín area in contrast to the other locations, despite considerable variation observed within the samples.

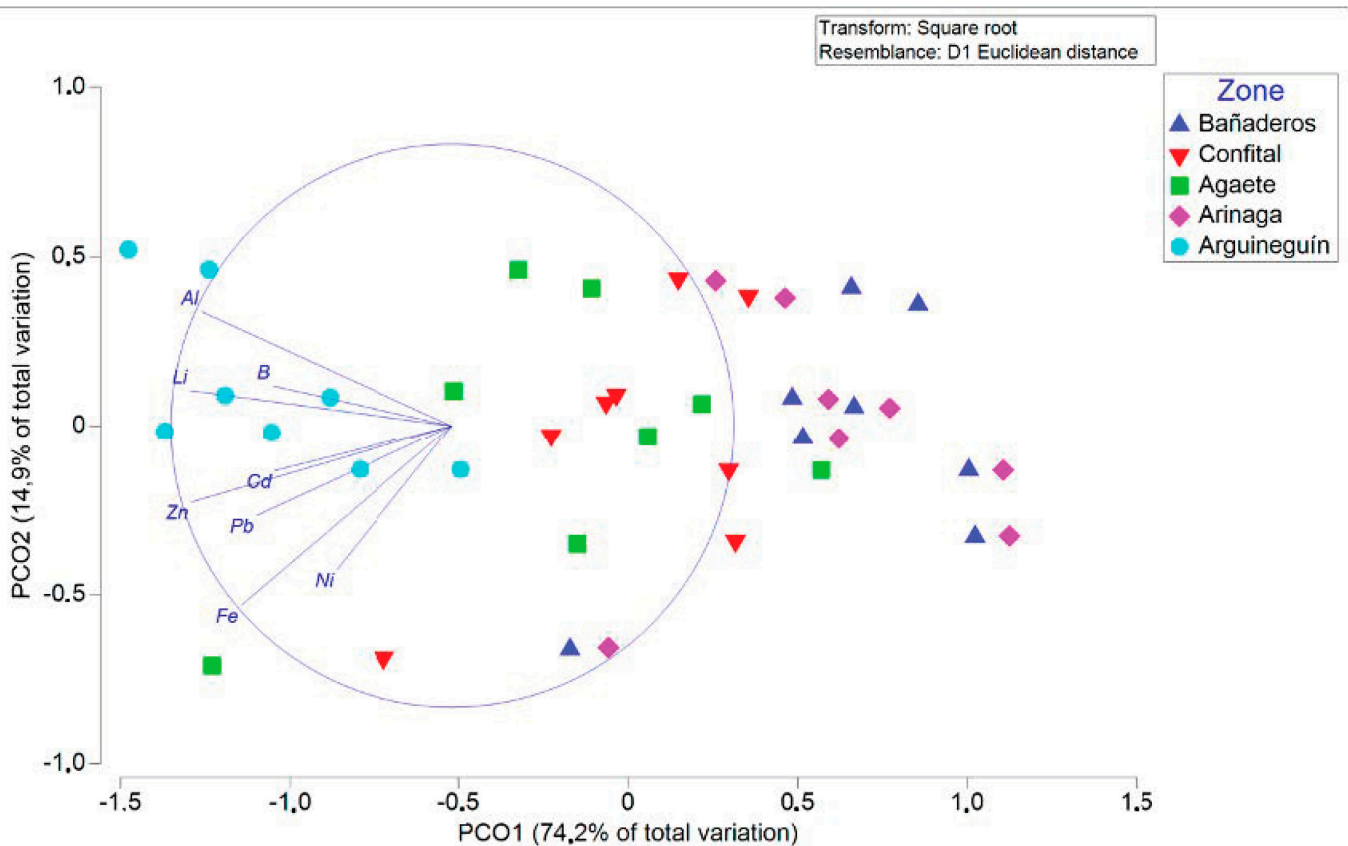


Figure 2. Principal coordinate analysis (PCoA) showing the first two axes (89.1% of variability), based on Euclidean distances of square-root-transformed data of heavy metal and trace element content in the five areas.

4. Discussion and Conclusions

The obtained results revealed that *Palaemon elegans* specimens from the Arguineguín zone exhibited elevated concentrations of metals and trace elements compared to the other areas. This disparity may stem from the fact that the southern sector of the island, being the most touristic, experiences heightened anthropic activity in comparison to the other designated stations. Pollution in tourist-oriented regions is a burgeoning concern affecting numerous parts of the globe. This surge is primarily attributed to the escalating number of tourists visiting these locations, consequently driving up the demand for fossil fuels, waste production, and pollution of air, water, and soil [26–30]. Agaete represented the zone where *P. elegans* demonstrated the second-highest concentrations of heavy metals and trace elements. Notably, this area is characterized by the presence of both a commercial and fishing port. Pollution from ports poses a significant environmental challenge for coastal communities worldwide [31–34]. While ports are vital sources of employment, they can also become sources of pollution if adequate preventative measures are not implemented. Pollution from ports can stem from various origins, including the release of industrial waste, fuel disposal, usage of pesticides and herbicides, sewage discharge, and rainwater runoff. These sources can have detrimental impacts on human health, the environment, and marine ecosystems [35–39]. The authors posit that *P. elegans* serves as a reliable bioindicator of both tourist and port-related pollution, particularly for metals like Al, Zn, Cd, Pb, Ni, Fe, B, and Li, as examined in this study. Shrimps have been widely employed as bioindicators of pollution across various regions globally. This is attributed to their capacity to absorb and metabolize contaminants present in the water, including heavy metals, pesticides, and other toxic substances. Shrimps also function as environmental sentinels, reflecting contamination levels in the water [1,40–42]. Table 4 displays the concentrations noted in water samples analyzed at diverse locations, all sourced from the identical pools where the shrimp specimens were gathered, while Table 5 delineates the significant differences within each zone concerning specific metals, presenting a consistent trend in the shrimp samples. The existence of contamination by heavy metals in intertidal zones can have profound implications for both the organisms inhabiting these ecosystems and the overall environmental balance. Heavy metals, characterized by their high density, encompass elements such as lead, cadmium, zinc, copper, and others. These metals have the propensity to accumulate within intertidal organisms along the food chain, resulting in an increasing concentration as one ascends the chain. Such accumulation can adversely impact apex predators and, ultimately, individuals who consume contaminated organisms.

Table 4. Descriptive statistics of all the elements analyzed in each water sampling zone (Mean, standard deviation) and metal content (mg/kg).

	Confital	Bañaderos	Agaete	Arinaga	Arguineguín
Al	0.400 ± 0.112	0.383 ± 0.150	0.481 ± 0.178	0.388 ± 0.119	0.502 ± 0.186
Zn	0.067 ± 0.040	0.063 ± 0.027	0.075 ± 0.051	0.069 ± 0.034	0.078 ± 0.060
Cd	0.001 ± 0.000	0.001 ± 0.000	0.002 ± 0.001	0.001 ± 0.000	0.001 ± 0.001
Pb	0.003 ± 0.002	0.003 ± 0.001	0.005 ± 0.003	0.003 ± 0.002	0.004 ± 0.003
Ni	0.060 ± 0.040	0.059 ± 0.042	0.072 ± 0.042	0.062 ± 0.041	0.073 ± 0.051
Fe	0.521 ± 0.251	0.519 ± 0.241	0.561 ± 0.273	0.520 ± 0.244	0.566 ± 0.271
B	1.861 ± 0.620	1.851 ± 0.614	1.900 ± 0.714	1.854 ± 0.624	1.915 ± 0.661
Li	0.052 ± 0.003	0.050 ± 0.003	0.060 ± 0.004	0.051 ± 0.004	0.062 ± 0.005

Table 5. Results of pairwise tests examining the significant factor “Zone” obtained in a one-way ANOVA analyzing the metal content variation in water sample. * $p < 0.05$.

Groups	Al	Zn	Cd	Pb	Ni	Fe	B	Li
Bañaderos, Confital	0.005 *	0.988	0.321	0.357	0.235	0.210	0.427	0.008 *
Bañaderos. Agaete	0.005 *	0.024 *	0.257	0.214	0.450	0.141	0.235	0.002 *
Bañaderos, Arinaga	0.532	0.857	0.943	0.958	0.985	0.920	0.915	0.922
Bañaderos, Arguineguín	0.001 *	0.002 *	0.005 *	0.006 *	0.110	0.001 *	0.005 *	0.002 *
Confital, Agaete	0.317	0.655	0.521	0.472	0.252	0.758	0.760	0.772
Confital, Arinaga	0.009 *	0.085	0.241	0.358	0.417	0.178	0.620	0.012 *
Confital, Arguineguín	0.003 *	0.007 *	0.215	0.087	0.320	0.038 *	0.019 *	0.002 *
Agaete, Arinaga	0.009 *	0.046 *	0.218	0.350	0.471	0.222	0.522	0.001 *
Agaete, Arguineguín	0.007 *	0.022 *	0.242	0.310	0.358	0.165	0.011 *	0.004 *
Arinaga, Arguineguín	0.001 *	0.001 *	0.011 *	0.005 *	0.032 *	0.001 *	0.001 *	0.002 *

Table 6 presents findings from various studies on different *Palaemon* species. Notably, two of these studies were conducted in the Canary Islands on Tenerife, showcasing considerable variability both within those studies and in comparison, to the results of the current study. Lozano et al.’s (2010) concentrations, being determined twelve years ago in an area of Tenerife’s capital, suggest a significant source of contamination, particularly considering *P. elegans*’s efficacy as a bioindicator. Conversely, Lozano et al. (2016) reported lower values compared to our study, which were attributed to the smaller, juvenile specimens analyzed. In the study by Adebisi et al. (2020), notably high concentrations of Cd and Pb were reported, potentially linked to the lax pollution control regulations in Nigeria [43–47], and metal values were higher than those obtained in our study, possibly due to the Sea of Marmara being surrounded by countries with extensive maritime traffic. This resulted in concentrated contaminants incorporated into organisms due to slow water renewal rates [48–52]. A study in Scotland (Nugegoda and Rainbow, 1995) reported higher Zn and Cd concentrations than our study, which were potentially linked to shrimp collection near a river mouth, and led to the sedimentation of nutrients enriching the ocean with metals and trace elements [53–57]. The concentration of heavy metals and trace elements in *P. elegans* muscle is notably higher in the Arguineguín area, which experiences the most significant contamination due to human activities, and is particularly heightened by tourist density. Hence, a more extensive monitoring initiative should be undertaken in this area to assess the ecosystem’s condition.

The selection of *P. elegans* as a bioindicator for heavy metal contamination, as opposed to other species like fish, mollusks, jellyfish, seabirds, and marine reptiles, is based on a series of key factors that establish this shrimp as an exceptionally valuable choice for assessing water quality and the well-being of aquatic ecosystems. First and foremost, *P. elegans* boasts a short life cycle and a high reproductive rate, allowing it to swiftly respond to alterations in water conditions and the presence of heavy metals. This rapid response is vital for early pollution detection, ensuring effective monitoring of fluctuations in metal concentrations in water and their impact on aquatic organisms. In contrast to many fish species with longer life cycles and lower reproductive rates, *P. elegans* offers a more concise timeframe for assessing pollution effects, rendering it a more sensitive indicator [58–61]. Moreover, these shrimp are comparatively easy to maintain in laboratory settings, streamlining the execution of long-term studies and controlled experiments. This advantage holds particular significance in scientific research as it facilitates the replication of consistent and comparable experimental conditions across various studies. In comparison, many fish and seabird species pose challenges in terms of captivity, making controlled research more cumbersome. Another advantage of *P. elegans* is its position within the aquatic food chain. As a benthic organism and a part of the diet of numerous fish and seabirds, these shrimp tend to accumulate heavy metals through their dietary intake, effectively reflecting the exposure of other organisms to pollution. This positions them as a valuable indicator for gauging the bioavailability of metals in the environment and their transfer through

the food web, which can have significant implications for the health of fish and seabird populations. Additionally, *P. elegans* exhibits a wide geographical distribution and inhabits a variety of aquatic environments, permitting its use as a bioindicator in diverse regions and ecosystems, ranging from estuaries to coastal lagoons. This geographical versatility is especially pertinent for pollution monitoring across varying scenarios where other species may be absent or less representative [62–67].

Table 6. Comparison with other studies on different species of Palaemon (mg/kg).

	Canary Islands			Nigeria	Turkey	Scotland
	<i>P. elegans</i>	<i>P. elegans</i>	<i>P. elegans</i>	<i>P. hastatus</i>	<i>P. serratus</i>	<i>P. elegans</i>
Zn	19.92	76.9			21.9	86.4
Fe	20.98	62.8		18.8	38.4	
Ni	0.61	8.3	0.03		6.7	
Cd	0.075		0.011	1.3	0.7	0.576
Pb	0.137		0.315	0.91	2.9	
B	4.26		0.177			
	Este estudio	[68]	[69]	[70]	[71]	[72]

Author Contributions: Introduction: E.L.-B., T.T.-B., J.M.L., J.A.G. and Á.J.G.; Material: E.L.-B., S.P., D.G.-W., C.R. and A.H.; Results and discussion: E.L.-B., J.A.G., J.M.L., T.T.-B., A.H. and S.P.; Conclusion: E.L.-B., Á.J.G., T.T.-B., J.M.L., J.A.G., D.G.-W., S.P., C.R., A.H. and Á.J.G. All authors have read and agreed to the published version of the manuscript.

Funding: This research received no external funding.

Institutional Review Board Statement: All authors declare that the use of animals for this research complies with the requirements of European legislation on the use of animals for experimentation. All samples were collected by researchers in the Canary Islands. Therefore, we faithfully comply with the Code of Practice for Housing and Care of Animals Used in Scientific Procedures.

Informed Consent Statement: We confirmed that this manuscript has not been published elsewhere and is not under consideration by another journal. Ethical approval and informed consent are not applicable for this study.

Data Availability Statement: Data will be made available on request. The data are not publicly available as the data will not be released until the project is completed.

Acknowledgments: Enrique Lozano-Bilbao thanks the University of La Laguna (ULL) and the Spanish Ministry of Universities for the Margarita Salas postdoctoral fellowship, granted by the UNI/551/2021 Order and funded by Next Generation EU Fund.

Conflicts of Interest: The authors declare that they have no known competing financial interests or personal relationships that could have appeared to influence the work reported in this paper.

References

1. Chatvijitkul, S.; Boyd, C.E.; Davis, D.A.; McNevin, A.A. Pollution Potential Indicators for Feed-Based Fish and Shrimp Culture. *Aquaculture* **2017**, *477*, 43–49. [\[CrossRef\]](#)
2. Gardner, C.; Watson, R.A.; Jayanti, A.D.; Suadi, J.; AlHusaini, M.; Lovrich, G.; Thiel, M. Crustaceans as Fisheries Resources: General Overview. In *Fisheries and Aquaculture*; Oxford University Press: Oxford, UK, 2020; Volume 9, p. 9.
3. Ajeeshkumar, K.K.; Visnu, K.V.; Remyakumari, K.R.; Navaneethan, R.; Asha, K.K.; Ganesan, B.; Chatterjee, N.S.; Anandan, R.; Mathew, S. Biochemical Composition and Heavy Metal Content of Selected Marine Fish from the Gulf of Mannar, India. *Fish. Technol.* **2015**, *52*, 164.
4. Pauly, D.; Christensen, V.; Dalsgaard, J.; Froese, R.; Torres, F. Fishing Down Marine Food Webs. *Science* **1998**, *279*, 860–863. [\[CrossRef\]](#) [\[PubMed\]](#)
5. Watson, R.A.; Cheung, W.W.L.; Anticamara, J.A.; Sumaila, R.U.; Zeller, D.; Pauly, D. Global Marine Yield Halved as Fishing Intensity Redoubles. *Fish Fish.* **2013**, *14*, 493–503. [\[CrossRef\]](#)
6. Jennings, S.; Reynolds, J.D.; Mills, S.C. Life History Correlates of Responses to Fisheries Exploitation. *Proc. R Soc. Lond B Biol. Sci.* **1998**, *265*, 333–339. [\[CrossRef\]](#)

7. Pezzullo, P.C. *Toxic Tourism: Rhetorics of Pollution, Travel, and Environmental Justice*; University of Alabama Press: Tuscaloosa, AL, USA, 2009; ISBN 0817355871.
8. Lerner, A.P. Priorities and Pollution: Comment. *Am. Econ. Rev.* **1974**, *64*, 715–717.
9. Mele, M.; Magazzino, C. Pollution, Economic Growth, and COVID-19 Deaths in India: A Machine Learning Evidence. *Environ. Sci. Pollut. Res.* **2021**, *28*, 2669–2677. [[CrossRef](#)]
10. Harrison, R.M. *Pollution: Causes, Effects and Control*; Royal Society of Chemistry: London, UK, 2001; ISBN 0854046216.
11. Sindermann, C.J. *Ocean Pollution: Effects on Living Resources and Humans*; CRC Press: Boca Raton, FL, USA, 1995; ISBN 1482229749.
12. Katircioglu, S.T. International Tourism, Energy Consumption, and Environmental Pollution: The Case of Turkey. *Renew. Sustain. Energy Rev.* **2014**, *36*, 180–187. [[CrossRef](#)]
13. Wear, S.L.; Thurber, R.V. Sewage Pollution: Mitigation Is Key for Coral Reef Stewardship. *Ann. N. Y. Acad. Sci.* **2015**, *1355*, 15–30. [[CrossRef](#)]
14. Cabral-Oliveira, J.; Pardal, M.A. Sewage Discharges in Oceanic Islands: Effects and Recovery of Eulittoral Macrofauna Assemblages. *J. Coast. Conserv.* **2016**, *20*, 307–314. [[CrossRef](#)]
15. Amiel, A.J.; Navrot, J. Nearshore Sediment Pollution in Israel by Trace Metals Derived from Sewage Effluent. *Mar. Pollut. Bull.* **1978**, *9*, 10–14. [[CrossRef](#)]
16. Liu, W.; Zhao, J.; Ouyang, Z.; Söderlund, L.; Liu, G. Impacts of Sewage Irrigation on Heavy Metal Distribution and Contamination in Beijing, China. *Environ. Int.* **2005**, *31*, 805–812. [[CrossRef](#)] [[PubMed](#)]
17. Roth, F.; Lessa, G.C.; Wild, C.; Kikuchi, R.K.P.; Naumann, M.S. Impacts of a High-Discharge Submarine Sewage Outfall on Water Quality in the Coastal Zone of Salvador (Bahia, Brazil). *Mar. Pollut. Bull.* **2016**, *106*, 43–48. [[CrossRef](#)] [[PubMed](#)]
18. Lozano-Bilbao, E.; Alcázar-Treviño, J. Sewage Pipe Waters Affect Colour Composition in Palaemon Shrimp from the Intertidal in the Canary Islands: A New Non-Lethal Bioindicator of Anthropogenic Pollution. *Diversity* **2023**, *15*, 658. [[CrossRef](#)]
19. Lozano-Bilbao, E.; González-Delgado, S.; Alcázar-Treviño, J. Use of Survival Rates of the Barnacle Chthamalus Stellatus as a Bioindicator of Pollution. *Environ. Sci. Pollut. Res.* **2021**, *28*, 1247–1253. [[CrossRef](#)]
20. Ruilian, Y.; Xing, Y.; Zhao, Y.; Hu, G.; Tu, X. Heavy Metal Pollution in Intertidal Sediments from Quanzhou Bay, China. *J. Environ. Sci.* **2008**, *20*, 664–669. [[CrossRef](#)]
21. Sadeghi, P.; Loghmani, M.; Frokhzad, S. Human Health Risk Assessment of Heavy Metals via Consumption of Commercial Marine Fish (Thunnus Albacares, Euthynnus Affinis, and Katsuwonus Pelamis) in Oman Sea. *Environ. Sci. Pollut. Res.* **2020**, *27*, 14944–14952. [[CrossRef](#)]
22. Lozano-Bilbao, E.; Espinosa, J.M.; Thorne-Bazarra, T.; Hardisson, A.; Paz, S.; González-Weller, D.; Rubio, C.; Gutiérrez, Á.J. Monitoring Different Sources of Marine Pollution in the Canarian Intertidal Zone Using Anemonia Sulcata as a Bioindicator. *Mar. Pollut. Bull.* **2023**, *195*, 115538. [[CrossRef](#)]
23. Lozano-Bilbao, E.; Alcázar-Treviño, J.; Alduán, M.; Lozano, G.; Hardisson, A.; Rubio, C.; González-Weller, D.; Paz, S.; Carrillo, M.; Gutiérrez, Á.J. Metal Content in Stranded Pelagic vs Deep-Diving Cetaceans in the Canary Islands. *Chemosphere* **2021**, *285*, 131441. [[CrossRef](#)]
24. Anderson, M.R. The Resource for the Power Industry Professional. *Proc. ASME Power* **2004**, *32*, 35–40.
25. Anderson, M.; Braak, C. Ter Permutation Tests for Multi-Factorial Analysis of Variance. *J. Stat. Comput. Simul.* **2003**, *73*, 85–113. [[CrossRef](#)]
26. Kocasoy, G. Effects of Tourist Population Pressure on Pollution of Coastal Seas. *Environ. Manag.* **1995**, *19*, 75–79. [[CrossRef](#)]
27. Yanes Luque, A.; Rodríguez-Báez, J.A.; Máyer Suárez, P.; Dorta Antequera, P.; López-Díez, A.; Díaz-Pacheco, J.; Pérez-Chacón, E. Marine Storms in Coastal Tourist Areas of the Canary Islands. *Nat. Hazards* **2021**, *109*, 1297–1325. [[CrossRef](#)]
28. Mikhailenko, A.V.; Ruban, D.A.; Ermolaev, V.A.; van Loon, A.J. Cadmium Pollution in the Tourism Environment: A Literature Review. *Geosciences* **2020**, *10*, 242. [[CrossRef](#)]
29. Carrillo, J.; González, A.; Pérez, J.C.; Expósito, F.J.; Díaz, J.P. Projected Impacts of Climate Change on Tourism in the Canary Islands. *Reg. Environ. Chang.* **2022**, *22*, 61. [[CrossRef](#)]
30. Ferreira, M.A.; Andrade, F. Intertidal Communities as Indicators of Environmental Change and Their Potencial Use in Biomonitoring: The Troia Resort (Portugal), a Large-Scale Tourist Development, as a Case Study. *Bol. Inst. Esp. Oceanogr.* **2003**, *19*, 253.
31. Cravo, A.; Bebianno, M.J. Bioaccumulation of Metals in the Soft Tissue of Patella Aspera: Application of Metal/Shell Weight Indices. *Estuar. Coast. Shelf. Sci.* **2005**, *65*, 571–586. [[CrossRef](#)]
32. Karnjanapratum, S.; Benjakul, S.; Kishimura, H.; Tsai, Y.H. Chemical Compositions and Nutritional Value of Asian Hard Clam (Meretrix Lusoria) from the Coast of Andaman Sea. *Food Chem.* **2013**, *141*, 4138–4145. [[CrossRef](#)]
33. Raman, A.V. Pollution Effects in Visakhapatnam Harbour, India: An Overview of 23 Years of Investigations and Monitoring. *Helgoländer Meeresunters* **1995**, *49*, 633–645. [[CrossRef](#)]
34. Mostafa, A.R.; Barakat, A.O.; Qian, Y.; Wade, T.L.; Yuan, D. An Overview of Metal Pollution in the Western Harbour of Alexandria, Egypt. *Soil Sediment Contam.* **2004**, *13*, 299–311. [[CrossRef](#)]
35. Campanella, L.; Conti, M.E.; Cubadda, F.; Sucapane, C. Trace Metals in Seagrass, Algae and Molluscs from an Uncontaminated Area in the Mediterranean. *Environ. Pollut.* **2001**, *111*, 117–126. [[CrossRef](#)] [[PubMed](#)]
36. Guerra-García, J.M.; García-Gómez, J.C. Assessing Pollution Levels in Sediments of a Harbour with Two Opposing Entrances. Environmental Implications. *J. Environ. Manag.* **2005**, *77*, 1–11. [[CrossRef](#)] [[PubMed](#)]

37. Costa, F.; Coelho, J.P.; Baptista, J.; Martinho, F.; Pereira, M.E.; Pardal, M.A. Mercury Accumulation in Fish Species along the Portuguese Coast: Are There Potential Risks to Human Health? *Mar. Pollut. Bull.* **2020**, *150*, 110740. [[CrossRef](#)] [[PubMed](#)]
38. Schwarzenbach, R.P.; Egli, T.; Hofstetter, T.B.; Von Gunten, U.; Wehrli, B. Global Water Pollution and Human Health. *Annu. Rev. Environ. Resour.* **2010**, *35*, 109–136. [[CrossRef](#)]
39. He, F.J.; MacGregor, G.A. Beneficial Effects of Potassium on Human Health. *Physiol. Plant.* **2008**, *133*, 725–735. [[CrossRef](#)]
40. Páez-Osuna, F.; Guerrero-Galván, S.R.; Ruiz-Fernández, A.C. The Environmental Impact of Shrimp Aquaculture and the Coastal Pollution in Mexico. *Mar. Pollut. Bull.* **1998**, *36*, 65–75. [[CrossRef](#)]
41. Olgunoğlu, M.P.; Olgunoğlu, İ.A.; Bayhan, Y.K. Heavy Metal Concentrations (Cd, Pb, Cu, Zn, Fe) in Giant Red Shrimp (*Aristaeomorpha foliacea* Risso 1827) from the Mediterranean Sea. *Pol. J. Environ. Stud.* **2015**, *24*, 631–635. [[CrossRef](#)]
42. Vazquez, F.G.; Sharma, V.K.; Mendoza, Q.A.; Hernandez, R. Metals in Fish and Shrimp of the Campeche Sound, Gulf of Mexico. *Bull. Environ. Contam. Toxicol.* **2001**, *67*, 756–762. [[CrossRef](#)]
43. Markus, T.; Sánchez, P.P.S. Managing and Regulating Underwater Noise Pollution. In *Handbook on Marine Environment Protection: Science, Impacts and Sustainable Management*; Salomon, M., Markus, T., Eds.; Springer International Publishing: Cham, Switzerland, 2018; pp. 971–995. ISBN 978-3-319-60156-4.
44. Anand, K.S.; Giraud-Carrier, F.C. Pollution Regulation of Competitive Markets. *Manag. Sci.* **2020**, *66*, 4193–4206. [[CrossRef](#)]
45. Ward-paige, C.A. A Global Overview of Shark Sanctuary Regulations and Their Impact on Shark Fisheries. *Mar. Policy* **2017**, *82*, 87–97. [[CrossRef](#)]
46. Yang, D.; Yang, X.; Wang, X.; Huang, C.; Zhu, S. Migration Paths and Laws of Pb from Source to Ocean. In *IOP Conference Series: Earth and Environmental Science*; IOP Publishing: Bristol, UK, 2019; Volume 295, p. 12046.
47. Hua, S.; Pei, X.; Li, W.; Cheng, H.; Zhao, H.; Sturdivant, D. Migration and Deposition Law of Pollutants in Urban Sewage Confluence Pipe Network from the Perspective of Ecology. *J. Environ. Public Health* **2022**, *2022*, 9893246. [[CrossRef](#)] [[PubMed](#)]
48. Ghomian, T.; Kizilkaya, O.; Choi, J.-W. Lead Sulfide Colloidal Quantum Dot Photovoltaic Cell for Energy Harvesting from Human Body Thermal Radiation. *Appl. Energy* **2018**, *230*, 761–768. [[CrossRef](#)]
49. Yilmaz, A.B. Comparison of Heavy Metal Levels of Grey Mullet (*Mugil cephalus* L.) and Sea Bream (*Sparus aurata* L.) Caught in Iskenderun Bay (Turkey). *Turk. J. Vet. Anim. Sci.* **2005**, *29*, 257–262.
50. Uysal, K.; Emre, Y.; Köse, E. The Determination of Heavy Metal Accumulation Ratios in Muscle, Skin and Gills of Some Migratory Fish Species by Inductively Coupled Plasma-Optical Emission Spectrometry (ICP-OES) in Beymelek Lagoon (Antalya/Turkey). *Microchem. J.* **2008**, *90*, 67–70. [[CrossRef](#)]
51. Wang, H.; Liu, D.; Dai, G. Review of Maritime Transportation Air Emission Pollution and Policy Analysis. *J. Ocean Univ. China* **2009**, *8*, 283–290. [[CrossRef](#)]
52. Viana, M.; Hammingh, P.; Colette, A.; Querol, X.; Degraeuwe, B.; de Vlieger, I.; Van Aardenne, J. Impact of Maritime Transport Emissions on Coastal Air Quality in Europe. *Atmos. Environ.* **2014**, *90*, 96–105. [[CrossRef](#)]
53. Cameron, V.; Vance, D. Heavy Nickel Isotope Compositions in Rivers and the Oceans. *Geochim. Cosmochim. Acta* **2014**, *128*, 195–211. [[CrossRef](#)]
54. Raptis, C.E.; van Vliet, M.T.H.; Pfister, S. Global Thermal Pollution of Rivers from Thermoelectric Power Plants. *Environ. Res. Lett.* **2016**, *11*, 104011. [[CrossRef](#)]
55. Jithesh, M.; Radhakrishnan, M.V. Seasonal Variation in Accumulation of Metals in Selected Tissues of the Ribbon Fish, *Trichiurus lepturus* Collected from Chaliyar River, Kerala, India. *J. Entomol. Zool. Stud.* **2017**, *5*, 51–56.
56. Squadrone, S.; Prearo, M.; Brizio, P.; Gavinelli, S.; Pellegrino, M.; Scanzio, T.; Guarise, S.; Benedetto, A.; Abete, M.C. Heavy Metals Distribution in Muscle, Liver, Kidney and Gill of European Catfish (*Silurus glanis*) from Italian Rivers. *Chemosphere* **2013**, *90*, 358–365. [[CrossRef](#)]
57. Chafi, S.; Azzouz, A.; Ballesteros, E. Occurrence and Distribution of Endocrine Disrupting Chemicals and Pharmaceuticals in the River Bouregreg (Rabat, Morocco). *Chemosphere* **2022**, *287*, 132202. [[CrossRef](#)] [[PubMed](#)]
58. Persson, M.; Andersson, S.; Baden, S.; Moksnes, P.-O. Trophic Role of the Omnivorous Grass Shrimp *Palaemon elegans* in a Swedish Eelgrass System. *Mar. Ecol. Prog. Ser.* **2008**, *371*, 203–212. [[CrossRef](#)]
59. Lorenzon, S.; Francese, M.; Ferrero, E.A. Heavy Metal Toxicity and Differential Effects on the Hyperglycemic Stress Response in the Shrimp *Palaemon elegans*. *Arch. Environ. Contam. Toxicol.* **2000**, *39*, 167–176. [[CrossRef](#)] [[PubMed](#)]
60. Achituv, Y.; Cook, P.A. The Influence of Temperature Variations and Thermal Pollution on Various Aspects of the Biology of the Prawn *Palaemon pacificus* (Stimpson). *J. Exp. Mar. Biol. Ecol.* **1984**, *74*, 291–302. [[CrossRef](#)]
61. Fishery in the Aegean Sea (Izmir Bay, Turkey). *J. Appl. Ichthyol.* **2008**, *24*, 339–341. [[CrossRef](#)]
62. Devineau, J.; Amiard Triquet, C. Patterns of Bioaccumulation of an Essential Trace Element (Zinc) and a Pollutant Metal (Cadmium) in Larvae of the Prawn *Palaemon serratus*. *Mar. Biol.* **1985**, *86*, 139–143. [[CrossRef](#)]
63. Penha-Lopes, G.; Torres, P.; Cannicci, S.; Narciso, L.; Paula, J. Monitoring Anthropogenic Sewage Pollution on Mangrove Creeks in Southern Mozambique: A Test of *Palaemon concinnus* Dana, 1852 (*Palaemonidae*) as a Biological Indicator. *Environ. Pollut.* **2011**, *159*, 636–645. [[CrossRef](#)]
64. Burger, J. Bioindicators: A Review of Their Use in the Environmental Literature 1970–2005. *Environ. Bioindic.* **2006**, *1*, 136–144. [[CrossRef](#)]
65. Markert, B.A.; Breure, A.M.; Zechmeister, H.G. *Bioindicators and Biomonitoring*; Elsevier: Amsterdam, The Netherlands, 2003; ISBN 0080527973.

66. Manickavasagam, S.; Sudhan, C.; Aanand, S. Bioindicators in Aquatic Environment and Their Significance. *J. Aquac. Trop.* **2019**, *34*, 73–79. [[CrossRef](#)]
67. Li, J.; Lusher, A.L.; Rotchell, J.M.; Deudero, S.; Turra, A.; Bråte, I.L.N.; Sun, C.; Shahadat Hossain, M.; Li, Q.; Kolandhasamy, P.; et al. Using Mussel as a Global Bioindicator of Coastal Microplastic Pollution. *Environ. Pollut.* **2019**, *244*, 522–533. [[CrossRef](#)]
68. Lozano, G.; Herraiz, E.; Hardisson, A.; Gutiérrez, A.J.; González-Weller, D.; Rubio, C. Heavy and Trace Metal Concentrations in Three Rockpool Shrimp Species (*Palaemon elegans*, *Palaemon adspersus* and *Palaemon serratus*) from Tenerife (Canary Islands). *Environ. Monit. Assess.* **2010**, *168*, 451–460. [[CrossRef](#)] [[PubMed](#)]
69. Lozano, E.; Lozano, G.; Hardisson, A.; Rubio, C. Contenido de Metales Pesados y Elementos Traza en Especies de Camarones de La Isla de Tenerife. *Capitán* **2016**, *28*, 60–72.
70. Adebisi, F.M.; Ore, O.T.; Ogunjimi, I.O. Evaluation of Human Health Risk Assessment of Potential Toxic Metals in Commonly Consumed Crayfish (*Palaemon hastatus*) in Nigeria. *Heliyon* **2020**, *6*, e03092. [[CrossRef](#)]
71. Kurun, A.; Balkis, H.; Balkis, N. Accumulations of Total Metal in Dominant Shrimp Species (*Palaemon adspersus*, *Palaemon serratus*, *Parapenaeus longirostris*) and Bottom Surface Sediments Obtained from the Northern Inner Shelf of the Sea of Marmara. *Environ. Monit. Assess.* **2007**, *135*, 353–367. [[CrossRef](#)] [[PubMed](#)]
72. Nugegoda, D.; Rainbow, P.S. The Uptake of Dissolved Zinc and Cadmium by the Decapod Crustacean *Palaemon Elegans*. *Mar. Pollut. Bull.* **1995**, *31*, 460–463. [[CrossRef](#)]

Disclaimer/Publisher’s Note: The statements, opinions and data contained in all publications are solely those of the individual author(s) and contributor(s) and not of MDPI and/or the editor(s). MDPI and/or the editor(s) disclaim responsibility for any injury to people or property resulting from any ideas, methods, instructions or products referred to in the content.