

Article

A New Model of Solar Illumination of Earth's Atmosphere during Night-Time

Roberto Colonna * and Valerio Tramutoli 

School of Engineering, University of Basilicata, 85100 Potenza, Italy; Valerio.tramutoli@unibas.it

* Correspondence: roberto.colonna@unibas.it

Abstract: In this work, a solar illumination model of the Earth's atmosphere is developed. The developed model allows us to determine with extreme accuracy how the atmospheric illumination varies during night hours on a global scale. This time-dependent variation in illumination causes a series of sudden changes in the entire Earth-atmosphere-ionosphere system of considerable interest for various research sectors and applications related to climate change, ionospheric disturbances, navigation and global positioning systems. The use of the proposed solar illumination model to calculate the time-dependent Solar Terminator Height (STH) at the global scale is also presented. Time-dependent STH impact on the measurements of ionospheric Total Electron Content (TEC) is, for the first time, investigated on the basis of 20 years long time series of GPS-based measurements collected at ground. The correlation analysis, performed in the post-sunset hours, allows new insights into the dependence of TEC–STH relation on the different periods (seasons) of observation and solar activity conditions.

Keywords: Solar Terminator Height; solar illumination of the atmosphere; Total Electron Content; ionosphere; GNSS; solar activity



Citation: Colonna, R.; Tramutoli, V. A New Model of Solar Illumination of Earth's Atmosphere during Night-Time. *Earth* **2021**, *2*, 191–207. <https://doi.org/10.3390/earth2020012>

Academic Editor: Charles Jones

Received: 16 February 2021

Accepted: 29 April 2021

Published: 30 April 2021

Publisher's Note: MDPI stays neutral with regard to jurisdictional claims in published maps and institutional affiliations.



Copyright: © 2021 by the authors. Licensee MDPI, Basel, Switzerland. This article is an open access article distributed under the terms and conditions of the Creative Commons Attribution (CC BY) license (<https://creativecommons.org/licenses/by/4.0/>).

1. Introduction

The dividing boundary between the day and night side of the Earth and its atmosphere is called Solar Terminator (ST). Its position on the ground determines the times of sunrise and sunset. Solar illumination reaching the two sides of this region differently contributes to the energy balance at different heights in the atmosphere. Such a differential, time-dependent, illumination generates sudden changes throughout the whole Earth-atmosphere-ionosphere system. Among the consequences of such a vertical (and horizontal) ST variation during the time there are: generation of acoustic gravity waves (AGW) [1–6] which, manifesting themselves at ionospheric heights as traveling ionospheric disturbances (TID), are responsible for the transport of energy and momentum in the near-Earth space; oscillations of vertical pressure and temperature gradients as well as of neutral and ionic atmospheric components (such as N₂, O, O⁺, NO⁺, O₂⁺) of particular interest for the study of climate change [7]; significant effects on wave propagation of all frequencies (ULF, VLF, LF, HF, etc.) [8] and on Total Electron Content [9], both of considerable interest for their significant influence on radio transmissions and for the study of the ionospheric effects of seismic activity. Moreover, as demonstrated by [10], over the equatorial region, horizontal and vertical components of AGW phase velocity coincide with horizontal and vertical components of the terminator velocity. For example, in the study of atmospheric gravitational waves, it is important to accurately determine the time, latitudes and altitudes in which the speed of variation of terminator becomes supersonic because in this space–time interval it can generate gravitational waves [1].

Vertical movements of the ST are particularly relevant for the construction of ionospheric empirical models [11]. They affect the composition and transport dynamics of plasma (temperature and ion/electron concentration) providing basic information required

to separate day and night conditions at different ionospheric layers. On this basis, in fact, it is possible to predict the layer D disappearance during the night or the elevation changes of the F2 layer peak. Similarly, the knowledge of *ST* movements is fundamental for the interpretation of the differential illumination of lower ionospheric layers that can oscillate following the regular alternation of day and night while, in certain conditions (e.g., at high latitudes), the upper layers remain always irradiated.

Despite its multi-disciplinary importance, a detailed model for the determination of *ST* vertical movements is still lacking. In the scientific literature available to date, manuscripts dealing with the subject [12] provide only partial solution equations.

In this paper, a Solar Terminator Height (*STH*) model is proposed which provides, with unprecedented accuracy and at the global scale, the vertical variation of the *ST* as a function of time.

The model also offers methodological support and solution equations to go beyond a series of approximations (e.g., use of the spherical shape of the Earth, not precise Earth–Sun position, use of sidereal time, use of the mean terrestrial radius, etc.) still used in all field of applications, even when greater accuracy would improve the performances.

As an example of the impact of *ST* variations on space–time dynamics of atmospheric parameters, the case of ionospheric Total Electron Content (*TEC*) is particularly addressed.

The *TEC* represents the number of electrons present along a ray path of 1 m² of an ionospheric section, measured in *TEC Unit* (1 *TEC Unit* = 10¹⁶ electrons/m²), and can be determined by ground-based (e.g., from ionosondes, Global Navigation Satellite Systems receivers [13]) and space-based (e.g., FORMOSAT/COSMIC series [14,15], DEMETER [16]) measurements.

In this work, a statistically-based analysis of 20 years of *GPS* (Global Positioning System)-*TEC* data measured over Central Italy during the period 2000–2019 is performed in order to recognize its dependence on *STH* space–time variations.

The analysis here implemented investigates, for the first time, the correlations between *TEC* measurements and *STH*. In the post-sunset hours, in fact, the sudden variation in solar irradiation incident on the various ionospheric layers generates variation in total ionization. Such a study can be particularly useful in the elaboration of ionospheric *TEC* models as well as in those applications requiring predicting the behavior of *TEC* parameter in specific conditions.

Moreover, due to the fact that the ionosphere directly influences trans-ionospheric radio waves propagating from satellites to *GNSS* receivers [17,18], such models are of vital importance in order to evaluate and correct errors (that can be quite significant) in *GNSS*-positioning due to *TEC* ionospheric irregularities. No less important is the role that *TEC* models play in the study of the possible relations between ionospheric perturbations and seismic activity, theorized by several authors in recent years [19–23].

2. Materials and Methods

This section is divided into two subsections. In the first one, we illustrate the proposed time-dependent *STH* model describing how the atmospheric solar illumination varies during the night along the vertical at a given geographical position. In the second, we report the method used for the statistical correlation analysis between *STH* and the ionospheric *TEC* parameter measured over Central Italy.

2.1. Solar Terminator Height Determination

The Solar Terminator Height (*STH*) at time *t*, *h* (θ , φ , *t*) for a given point *P*, at latitude θ and longitude φ on the Earth's surface, represents the height of the Sun-shadow demarcation line (solar terminator) at the instant *t* along the vertical at point *P* (θ , φ).

The only assumptions we make in the mathematical modelling are: solar rays parallel to each other and ellipsoidal (WGS84) shape of the Earth.

The vertical height of the point *P* above the Earth's surface is a line joining the point *P* and a point *H* along the local ellipsoid's normal *n* (Figure 1). The length \overline{PH} is called the

ellipsoidal height h . The ellipsoid's normal n is a straight line perpendicular to the plane tangent to the ellipsoid at the point P and which, then, crosses in a generic point P_0 the axis of rotation of the Earth.

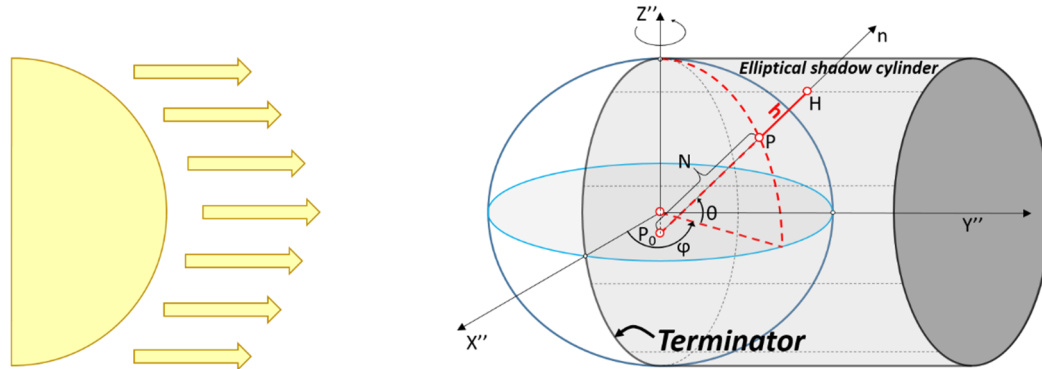


Figure 1. Solar illumination model of the Earth's ellipsoid at the time of the equinox and representation of the ellipsoidal height of the solar terminator (Solar Terminator Height) h and of some of the related parameters.

Therefore, the terminal point $H(\theta, \varphi, t)$ of the solar terminator ellipsoidal height $h(\theta, \varphi, t)$ is given by the intersection between n and the boundary of the shape generated by the shadow produced by the Earth's ellipsoid illuminated by the Sun's rays (elliptical shadow cylinder shown in Figure 1).

By choosing WGS84 as reference ellipsoid and by choosing a Cartesian reference system, which for convenience we call $X''Y''Z''$, having the Z'' axis coinciding with the Earth's rotation axis, the $X''Y''$ plane coinciding with the equatorial plane and the X'' axis which intersects the prime meridian on the positive side (Figure 1), it is possible to determine the ellipsoidal height h by making it explicit from any of the well-known conversion formulas provided by geodesy:

$$X''_H = (N + h) \cdot \cos \theta \cdot \cos \varphi; \quad (1)$$

$$Y''_H = (N + h) \cdot \cos \theta \cdot \sin \varphi; \quad (2)$$

$$Z''_H = [N \cdot (1 - e^2) + h] \cdot \sin \theta; \quad (3)$$

where:

- H is the terminal point of the ellipsoidal height h ;
- $N = \frac{a}{\sqrt{1 - e^2 \cdot \sin^2 \theta}}$ is the length of the straight line coinciding with the ellipsoid's normal n connecting the point P and the point of intersection between n and Z'' axis P_0 (length $\overline{PP_0}$ in Figure 1);
- e^2 and a , respectively equal to 0.00669438 and to 6,378,137 m, are the ellipsoidal parameters first eccentricity squared and semi-major axis of the reference ellipsoid used (WGS84);
- θ and φ are, respectively, the geodetic latitude and the longitude.

Since we are interested in determining the variation of h as a function of time (and therefore of the angle of rotation of the Earth around its axis), for our purposes it is more convenient to choose a new $X'Y'Z'$ reference system, rotating the $X''Y''Z''$ system around the Z'' axis, so that, as the Earth rotates, our reference system rotates in the opposite direction, making sure that the positive side of the X' axis always passes through the point of intersection between sunset line and equatorial plane (Figure 1 shows the moment of the day in which $X'Y'Z'$ coincides with $X''Y''Z''$).

In order for the proposed equations, (1), (2) and (3), to be valid in the new $X'Y'Z'$ reference system, we replace the longitude φ with the angle measured on the equatorial plane between the meridian passing through the X' axis (sunset line) and the meridian

determine the equation of the two geometric figures (n and E) and their intersection at the point H_{xz} .

n_{xz} is a straight line passing through the projections on the XZ plane of the points P and P_0 . The coordinates of the points P and P_0 in the $X''Y''Z''$ reference system are given, again, by the well-known equations of the ellipsoid's normal provided by geodesy:

$$X''_P = N \cdot \cos \theta \cdot \cos \varphi; \quad (11)$$

$$Y''_P = N \cdot \cos \theta \cdot \sin \varphi; \quad (12)$$

$$Z''_P = N \cdot (1 - e^2) \cdot \sin \theta; \quad (13)$$

$$X''_{P_0} = 0; \quad (14)$$

$$Y''_{P_0} = 0; \quad (15)$$

$$Z''_{P_0} = -e^2 \cdot N \cdot \sin \theta. \quad (16)$$

Applying the equations of rotation already used to rotate the point H from the reference system $X''Y''Z''$ to the reference system XYZ , the points P and P_0 in XYZ are given by the following expressions:

$$X_P = N \cdot \cos \theta \cdot \cos \lambda; \quad (17)$$

$$Z_P = N \cdot \cos \theta \cdot \sin \lambda \cdot \sin \delta + N \cdot (1 - e^2) \cdot \sin \theta \cdot \cos \delta; \quad (18)$$

$$X_{P_0} = 0; \quad (19)$$

$$Z_{P_0} = -e^2 \cdot N \cdot \sin \theta \cdot \cos \delta. \quad (20)$$

At this point, we can determine the equation of the line n_{xz} passing through the points P e P_0 (and through the point H_{xz} ; see Figure 2):

$$\frac{X_n - X_{P_0}}{X_P - X_{P_0}} = \frac{Z_n - Z_{P_0}}{Z_P - Z_{P_0}}; \quad (21)$$

$$X_n = \frac{Z_n - Z_{P_0}}{Z_P - Z_{P_0}} \cdot X_P. \quad (22)$$

From the Equations (17), (18) and (20), after some simplifications, we have:

$$\frac{X_P}{Z_P - Z_{P_0}} = \frac{\cos \lambda}{\sin \lambda \cdot \sin \delta + \tan \theta \cdot \cos \delta}; \quad (23)$$

defining:

$$C_1 = \frac{\cos \lambda}{\sin \lambda \cdot \sin \delta + \tan \theta \cdot \cos \delta}; \quad (24)$$

we can write:

$$X_n = (Z_n - Z_{P_0}) \cdot C_1. \quad (25)$$

Let's now move on to the equation of the ellipsoid E , which, in the $X''Y''Z''$ reference system, coincides with the one in the $X'Y'Z'$ reference system:

$$\frac{X'_E{}^2 + Y'_E{}^2}{a^2} + \frac{Z'_E{}^2}{c^2} = 1; \quad (26)$$

where c , equal to 6,356,752.314 m, is the semi-minor ellipsoid parameter of the reference ellipsoid used (WGS84).

We determine the equation of the coordinate X_E as a function of Z_E on the XZ plane (for $Y = 0$). Again exploiting the rotation equations of the reference system, in XYZ , after some substitutions, we have:

$$X'_E = X_E; \quad (27)$$

$$Y'_E = Z'_E \cdot \frac{\sin \delta}{\cos \delta} = Z'_E \cdot \tan \delta; \quad (28)$$

$$Z'_E = \frac{Z_E - Y'_E \cdot \sin \delta}{\cos \delta} = \frac{Z_E - Z'_E \cdot \tan \delta \cdot \sin \delta}{\cos \delta} = \frac{Z_E}{\cos \delta} - Z'_E \cdot \tan^2 \delta; \quad (29)$$

from which:

$$Z'_E = \frac{Z_E}{\cos \delta \cdot (1 + \tan^2 \delta)}; \quad (30)$$

$$Y'_E = \frac{Z_E \cdot \tan \delta}{\cos \delta \cdot (1 + \tan^2 \delta)}. \quad (31)$$

By replacing Equations (27), (31) and (30) in (26), we have:

$$\frac{X_E^2}{a^2} + \left[\frac{Z_E \cdot \tan \delta}{a \cdot \cos \delta \cdot (1 + \tan^2 \delta)} \right]^2 + \left[\frac{Z_E}{c \cdot \cos \delta \cdot (1 + \tan^2 \delta)} \right]^2 = 1; \quad (32)$$

$$\frac{X_E^2}{a^2} + \left[\frac{Z_E \cdot \tan \delta}{a \cdot \cos \delta \cdot (1 + \tan^2 \delta)} \right]^2 + \left[\frac{Z_E}{c \cdot \cos \delta \cdot (1 + \tan^2 \delta)} \right]^2 = 1; \quad (33)$$

$$\frac{X_E^2}{a^2} + Z_E^2 \cdot \frac{1}{[\cos \delta \cdot (1 + \tan^2 \delta)]^2} \cdot \left(\frac{\tan^2 \delta}{a^2} + \frac{1}{c^2} \right) = 1; \quad (34)$$

$$X_E^2 = a^2 - Z_E^2 \cdot \frac{1}{[\cos \delta \cdot (1 + \tan^2 \delta)]^2} \cdot \left(\tan^2 \delta + \frac{a^2}{c^2} \right). \quad (35)$$

Defining:

$$C_2 = \frac{1}{[\cos \delta \cdot (1 + \tan^2 \delta)]^2} \cdot \left(\tan^2 \delta + \frac{a^2}{c^2} \right); \quad (36)$$

we can write:

$$X_E^2 = a^2 - Z_E^2 \cdot C_2; \quad (37)$$

and, squaring the Equation (25), we obtain:

$$X_n^2 = Z_n^2 \cdot C_1^2 - Z_n \cdot (2 \cdot Z_{P_0} \cdot C_1^2) + Z_{P_0}^2 \cdot C_1^2. \quad (38)$$

Thus, given the expressions of X_n (Z_n) and X_E (Z_E), (38) and (37), it is possible to determine their point of intersection Z_H (X_H) by equating them:

$$Z_H^2 \cdot (C_1^2 + C_2) - Z_H \cdot (2 \cdot Z_{P_0} \cdot C_1^2) + Z_{P_0}^2 \cdot C_1^2 - a^2 = 0. \quad (39)$$

Defining:

$$K_1 = C_1^2 + C_2; \quad (40)$$

$$K_2 = 2 \cdot Z_{P_0} \cdot C_1^2; \quad (41)$$

$$K_3 = Z_{P_0}^2 \cdot C_1^2 - a^2; \quad (42)$$

we can write:

$$Z_H = \frac{K_2 \pm \sqrt{K_2^2 - 4 \cdot K_1 \cdot K_3}}{2K_1}. \quad (43)$$

We use the positive sign if $\theta + \delta > 0$ and the negative sign if $\theta + \delta < 0$.

From Equation (25), it follows that:

$$X_H = (Z_H - Z_{P_0}) \cdot C_1; \quad (44)$$

and, finally, it is possible to compute the Equation (10):

$$h = STH = \frac{X_H}{\cos \theta \cdot \cos \lambda} - N. \quad \text{if } \alpha \leq 0^\circ \quad (45)$$

The last step consists in determining the three unknown angles:

- Solar declination angle δ ;
- Local hour angle from sunset λ ;
- Solar elevation angle α .

We use the equations proposed in *Chapters 25, 7, 22 and 30* of the book *Astronomical Algorithms* [24] for the accurate determination of the solar declination angle δ and the equations proposed in *Chapters 28, 22 and 25* of the same book [24] for the determination of the equation of time ET , as a function of which the angles λ and α will then be determined. The proposed equations can also be deduced from the spreadsheets available online on the NOAA solar calculator website [25], also based on the book *Astronomical Algorithms* [24]. However, given that the equations proposed by [24] have different scopes from those proposed in the present work and different possibilities of choosing the “previous parameters” according to the use of the “dependent parameters” and that over time there have been some updates to the equations, it is preferred to reorganize them and report them below for clarity and simplicity of use.

2.1.1. Solar Declination Angle: δ

The equations proposed in *Chapters 25, 7, 22 and 30* of [24] for the accurate determination of the solar declination angle δ are then reorganized below.

Defining JD as the Julian Day from the epoch “1 January 2000 12:00:00 UTC”, it is possible to determine the time T expressed in Julian centuries:

$$T = \frac{JD}{36525}; \quad (46)$$

It is considered superfluous to report the JD calculation procedure as nowadays any programming language has at least one function for its calculation; in any case, the procedure can be found in Chapter 7 of [24].

Thus, the Sun’s Mean Longitude (ML), referring to the mean equinox of the date (decimal degrees), is:

$$ML = 280.46646^\circ + T(36000.76983^\circ + 0.0003032^\circ \cdot T); \quad (47)$$

where 280.46646° is the mean longitude of the Sun on 1 January 2000 at noon UTC (mean equinox of the date).

Then, the Sun’s Mean Anomaly MA is given by:

$$MA = 357.52911^\circ + T(35999.05029^\circ - 0.0001537^\circ \cdot T); \quad (48)$$

MA is defined as “the angular distance from perihelion which the planet would have if it moved around the Sun with a constant angular velocity” [24] (Cap. 30, p. 194).

As a function of MA , it is now possible to calculate the Sun’s equation of the center C , that is, the angular difference between the actual position of a body in its elliptical orbit and the position it would occupy if its motion were uniform in a circular orbit of the same period.

C can be performed as follows:

$$C = \sin(MA) \cdot (1.914602^\circ - T(0.004817^\circ + 0.000014^\circ \cdot T)) + \sin(2T) \cdot (0.019993^\circ - 0.000101^\circ \cdot T) + \sin(3T) \cdot 0.000289^\circ; \quad (49)$$

By adding Sun's equation of the center C to Sun's Mean Anomaly MA , we calculate the Sun's true longitude TL (the true geometric longitude referred to the mean equinox of the date):

$$TL = ML + C; \quad (50)$$

The Sun's Apparent longitude AL , i.e., TL corrected for the nutation and the aberration, is given by:

$$AL = TL - 0.00569^\circ - 0.00478^\circ \cdot \sin(125.04^\circ - 1934.136^\circ \cdot T); \quad (51)$$

The next step is to calculate the mean obliquity of the ecliptic MOE . The equation proposed by the 1998 version of *Astronomical Algorithms* [24], which we are using as the main reference, shows terms up to the third order. This equation is still in use also in the spreadsheets available online on the NOAA solar calculator website [25], but the JPL's fundamental ephemerides are constantly updated. In particular, the MOE calculation was updated in the *Astronomical Almanac* for the year 2010 [26], which, in addition to correcting the coefficients for the terms up to the third order, adds the terms of the fourth and fifth orders:

$$MOE = 23^\circ 26' 21'', 406 - 46'', 836769T - 0'', 0001831T^2 + 0'', 00200340T^3 - 0'', 576 \cdot 10^{-6}T^4 - 4'', 34 \cdot 10^{-8}T^5; \quad (52)$$

where, again, T is the time measured in Julian centuries from noon 1 January 2000 UTC.

Once MOE is known, it is possible to compute the obliquity corrected OC , which should be considered in order to calculate the apparent position of the Sun (position of the Sun corrected for the nutation and the aberration):

$$OC = MOE + 0.00256^\circ \cdot \cos(125.04^\circ - 1934.136^\circ \cdot T); \quad (53)$$

Finally, the Sun's declination δ is given by:

$$\delta = \arcsin(\sin OC \cdot \sin AL); \quad (54)$$

2.1.2. Equation of Time: ET (min)

For the precise determination of the angles λ and α , instead, we use the equation of time ET , the calculation of which is proposed in Chapter 28 (with references to Chapters 22 and 25) of the book *Astronomical Algorithms* [24].

ET is a corrective parameter of the heliocentric longitude of the Earth and therefore of solar time. In particular, it transforms the mean solar time MST into the true solar time TST .

MST , in fact, is calculated on the basis of the assumption of Earth's constant velocity of revolution along a circular orbit, rather than an elliptical one. Furthermore, at a much lower magnitude, the equation of time also corrects the variations in the Earth's speed along the elliptical due to the interaction with the Moon and with the planets.

ET expressed in minutes is given by the following expression:

$$ET = [y \cdot \sin(2 \cdot ML) - 2 \cdot e \cdot \sin(MA) + 4 \cdot e \cdot y \cdot \sin(MA) \cdot \cos(2 \cdot ML) - 1/2 \cdot y^2 \cdot \sin(4 \cdot ML) - 5/4 e^2 \cdot \sin(2 \cdot MA)] \cdot \frac{1440 \text{ min}}{360^\circ}; \quad (55)$$

where e = eccentricity of the Earth's orbit:

$$e = 0.016708634 - 0.000042037 \cdot T - 0.0000001267 \cdot T^2; \quad (56)$$

y = coefficient of correction of the position of the Sun for the nutation and the aberration:

$$y = \tan^2 \frac{OC}{2}; \quad (57)$$

2.1.3. Local Hour Angle from Sunset λ

The angle λ is defined as the local hour angle from sunset since it represents the local hour angle LHA reduced by 90° . In fact, LHA , which is the angle between the meridian passing through the geographical position of the Sun and the meridian passing through the geographical position of the point P , measures 0° when the point P is at solar noon. Similarly, λ is equal to 0 when the meridian passing through the point P coincides with the meridian passing through the point where sunset occurs on the equatorial plane.

For its determination, the following 4 steps are carried out:

1. HD (min/UTC), the hour of the day hh:mm:ss UTC of point P expressed in minutes, is calculated:

$$HD = hh \cdot 60 + mm + ss/60; \quad (58)$$

2. TST (min/UTC), the true solar time of point P expressed in minutes, is obtained as follows:

$$TST = (HD + ET + 4 \cdot \varphi) \bmod 1440 \text{ min}; \quad (59)$$

3. LHA ($^\circ$), the local hour angle of point P expressed in degrees, is given by:

$$LHA = TST/4 - 180^\circ; \quad (60)$$

4. λ ($^\circ$), local hour angle from sunset expressed in degrees, then, is:

$$\lambda = (LHA - 90^\circ) \bmod 360^\circ; \quad (61)$$

2.1.4. Solar Elevation Angle α

Finally, still exploiting the knowledge of the LHA , it is possible to calculate α ($^\circ$), the solar elevation angle, expressed in degrees:

$$\alpha = \arcsin(\sin \theta \cdot \sin \delta + \cos \theta \cdot \cos \delta \cdot \cos LHA). \quad (62)$$

A computer code for the time-dependent STH calculation for any geographic location on the globe was written using the R programming language [27]. This code can be found in the Supplementary Materials (Supplementary 1) to this paper.

2.2. STH –TEC Correlation Analysis

A simple look at the typical behavior of TEC measurements clearly enhances their strict dependence on the daily solar variation (see Figure 3, [28]).

Solar forcing also causes seasonal variations [29–31]; however, it is not the unique cause of ionospheric TEC deviations. For instance, geomagnetic activity (and storms) can significantly affect TEC so that, in order to discriminate solar from other contributions, it is particularly important to study those parts of the day (before sunrise or after sunset) when ionospheric layers are selectively illuminated by the Sun [32] (Figure 3).

In order to evaluate solar contribution to TEC variations (as a function of the specific location and time of year and in different conditions of solar activity), a correlation analysis with STH after sunset was performed. A simple linear regression model and a log-linear regression model, accompanied by the estimate of Pearson's linear correlation coefficient, were used to verify the existence of a relationship between the two variables and the relative degree of correlation between them.

In the data preprocessing phase, the following data selection and filtering operations were implemented in order to respond to the double need for homogeneity and statistical significance of the *TEC* data under investigation.

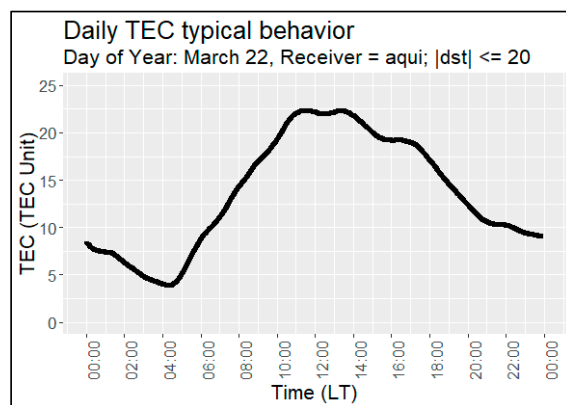


Figure 3. TEC measurements collected by the GPS L'Aquila receiver (Central Italy) on 22 March 2016 showing the fairly standard behavior of *TEC* at mid-latitudes (in quiet geomagnetic activity conditions).

Collection of *TEC* Data Samples

The analyzed Total Electron Content (*TEC*) data were obtained using the open-source software IONOLAB-*TEC* [33]; this software, developed by the Ionospheric Research Laboratory of the Hacettepe University of Ankara (Turkey), elaborates the *vertical TEC* (*slant TEC* calculated along the joining GPS satellite–GPS receiver corrected for vertical direction) using the method described in [34] and offers the possibility to test its effectiveness by comparison with *TEC* estimates from IGS analysis centers. The satellite DCB (Differential Code Bias) is obtained from IONEX files, and the receiver DCB is obtained using the IONOLAB-BIAS algorithm detailed in [35]. The temporal resolution of the *TEC* data is 30 s.

To avoid comparing non-homogeneous data, we proceeded, first of all, to sample only data coming from the same GPS receiver, and then measured in the same geographical position. The one located in Central Italy in the city of L'Aquila was chosen as the reference station for estimating the *TEC*, whose GPS receiver is called AQUA (Lat.: 42.368, Long.: 13.35). We chose this station as it is the one that provides the longest historical series of data at national level, lasting over 20 years. We then analyzed the twenty-year time interval that goes from 1 January 2000 00:00:00 to 1 January 2020 00:00:00 of *TEC* data.

As a first operation, in order to avoid unnecessary delays in processing the twenty-year time series under analysis, the data were downsampled from 30 s to 10 min. The time interval of 30 s between successive observations was, in fact, considered the low temporal dynamic of the signal, considered excessively short for the purposes of this work.

The next step of pre-processing the data, implemented in order to prepare them for the linear correlation study with the *STH* variable, was to filter the *TEC* data, saving only the data recorded at the times of our interest, that is, from the time of sunset to solar midnight at the geographical position of the AQUA-GPS receiver.

The *TEC*, as previously anticipated, is a parameter that varies not just in response to the normal daily/seasonal solar cycle but also according to additional known and unknown sources. Known further sources of variation are intensification of solar activity as well as the already mentioned geomagnetic activity both affecting *TEC* above the geographic location under observation.

Therefore, a twenty-year dataset of observations was built, including the measured indices of solar activity *F10.7* and of geomagnetic activity (*Dst*) obtained from NASA's data supply service [36]. Using the 20:00 measurement of the *F10.7* index and the hourly measurements of the *Dst* index, for each of the two parameters, through a linear interpolation operation between successive values, the difference in time resolution with the *TEC* index

(which is equal to 10 min) was filled. Both are indices measured on a global scale, which, however, influence the *TEC* parameter to a variable extent, even at a local level.

In particular, geomagnetic activity is more difficult to manage, as it can generate anomalous and unpredictable local variations in the electron content in the ionosphere. Therefore, to determine to what extent the *TEC* may vary as a function just of the portion of the ionosphere illuminated by the Sun, periods affected by intense ($|Dst| > 20$ nT) geomagnetic activity were excluded by the dataset.

In order to take into account *TEC* dependence on both seasonal solar cycle and active-Sun periods, the twenty-year dataset was divided into 12 monthly groups, one for each month of the year, and into 6 groups according to the parameter *F10.7* (6 ranges of solar activity shown in Table 1) in order to obtain 72 homogeneous datasets.

Table 1. Solar activity levels of *F10.7* index in solar flux unit (s.f.u.) in which the *STH*–*TEC* linear regression graphs are grouped.

Solar Activity Level	Range 1	Range 2	Range 3	Range 4	Range 5	Range 6
<i>F10.7</i> (s.f.u.)	0–80	80–100	100–120	120–140	140–160	160–Inf.

3. Results

3.1. *STH* as Function of Time

Figures 4–6 give some examples of time-dependent *STH* values computed following the model described in Section 2.1 over three pairs of points chosen in both hemispheres in three different (Tropical, Temperate and Polar) Zones. The temporal resolution of the graphs is 10 min, and the *STH* values are shown for an entire year (2000).

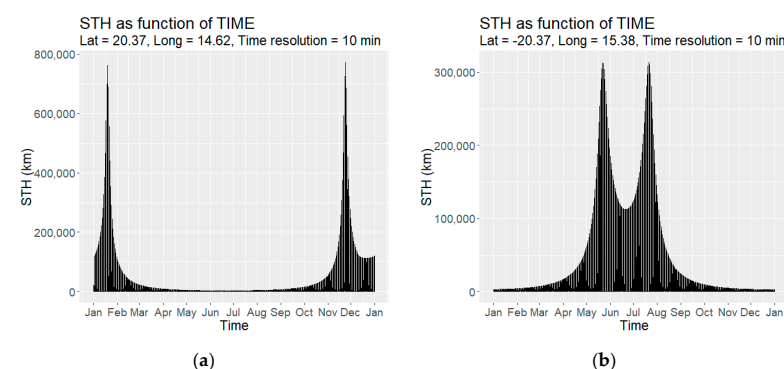


Figure 4. Examples of time-dependent *STH* determination by using the proposed model. The two figures show the trend of *STH* as a function of time over an entire year (2000) in tropical latitudes. Figure (a) represents *STH* in the Northern Hemisphere. Figure (b) represents *STH* in the Southern Hemisphere. Note that, in the two *STH* peaks—corresponding to the solar midnight of the two days of the year in which the latitude θ is closest to $-\delta$ (declination)—small variations in computation time or longitude are enough to ensure that each of the two *STH* peaks varies considerably (in fact, if it were $\theta = -\delta$, when $SZA = -180$, it would be $STH = \infty$). Therefore, precise longitude values were chosen, such as to better emphasize such an aspect.

As can be seen, the graphs proposed reflect expected *STH* annual behavior. In the case of the first two plots (Figure 4), relating to intertropical latitudes, the solar terminator reaches peak altitudes in the few winter nights in which the vertical to the considered geographical position is almost parallel to the direction of the Sun's rays, going to meet the Sun-shadow line at hundreds of thousands of kilometers of altitude, before dropping abruptly. At mid-latitudes (Figure 5), however, the nocturnal peak heights show more tenuous variations, touching the maximum and minimum values at the relative winter and summer solstices. Finally, at polar latitudes, it is possible to appreciate the alternation of the months of polar day and polar night, with maximum daily values of *STH* that are maintained in the order of hundreds (or a few thousand) of kilometers of altitude.

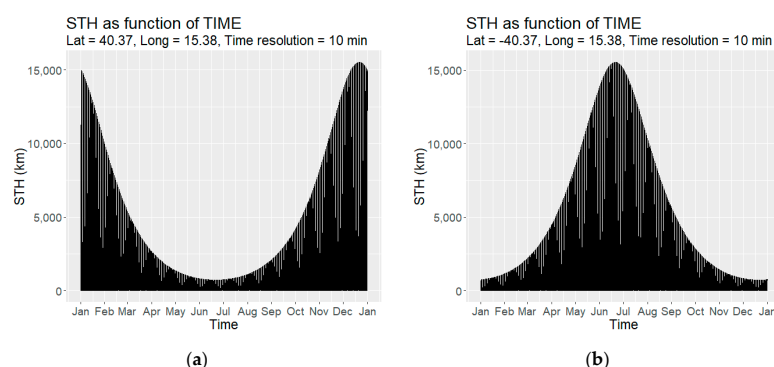


Figure 5. Examples of time-dependent *STH* determination by using the proposed model. The two figures show the trend of *STH* as a function of time over an entire year (2000) in temperate latitudes. Figure (a) represents *STH* in the Northern Hemisphere. Figure (b) represents *STH* in the Southern Hemisphere.

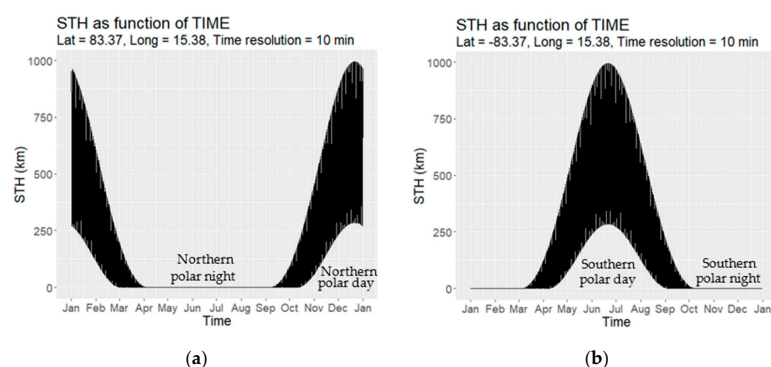


Figure 6. Examples of time-dependent *STH* determination by using the proposed model. The two figures show the trend of *STH* as a function of time over an entire year (2000) in polar latitudes. Figure (a) represents *STH* in the Northern Hemisphere. Figure (b) represents *STH* in the Southern Hemisphere.

3.2. *STH*–*TEC* Correlation Analysis

In this section, we show the results of a preliminary study on the *STH*–*TEC* correlation analysis during the period between sunset and solar midnight. In particular, the scatter plots and the regression lines for the two variables were monthly processed in different conditions of solar activity. As a representative example of how the correlation evolves on average in the six ranges of solar activity, we show the plots related to the solar activity level between 100 and 120 *s.f.u.* (Figure 7). The other five ranges of solar activity plots can be found in the Supplementary Materials to this paper (Supplementary). The *TEC* data used in the analysis were collected by the *AQUI* GPS receiver located in Central Italy (Lat.: 42.37; Long.:13.35). At the top of each graph, the corresponding linear correlation coefficient, the root mean squared error (*RMSE*) and the daily mean Time Coverage (*TC*) of the month are reported.

The statistical analysis carried out on the time interval between sunset and solar midnight highlights, as expected, a negative correlation between *STH* and *TEC*, which, albeit to a more or less marked extent, always exists. In other words, in this period of time and in the absence of high geomagnetic activity, regardless of the solar activity, it can be expected that, as the portion of the atmosphere illuminated by the sun decreases (increasing *STH*), the *TEC* also decreases.

From the visual analysis of the monthly scatter plots generated in presence of solar activity between 100 and 120 *s.f.u.*, it is quite evident that, if on the one hand there is a fairly clear *TEC*–*STH* linear anti-correlation during the spring–summer period (in particular during the period May–August), on the other, in the autumn–winter period the decrease in *TEC* as *STH* increases is considerably more marked in the first 200–500 km of altitude, a trend that, probably, during the period September–March, can be better described with a log-linear regression (this would imply that the *TEC*–*STH* relationship is exponential).

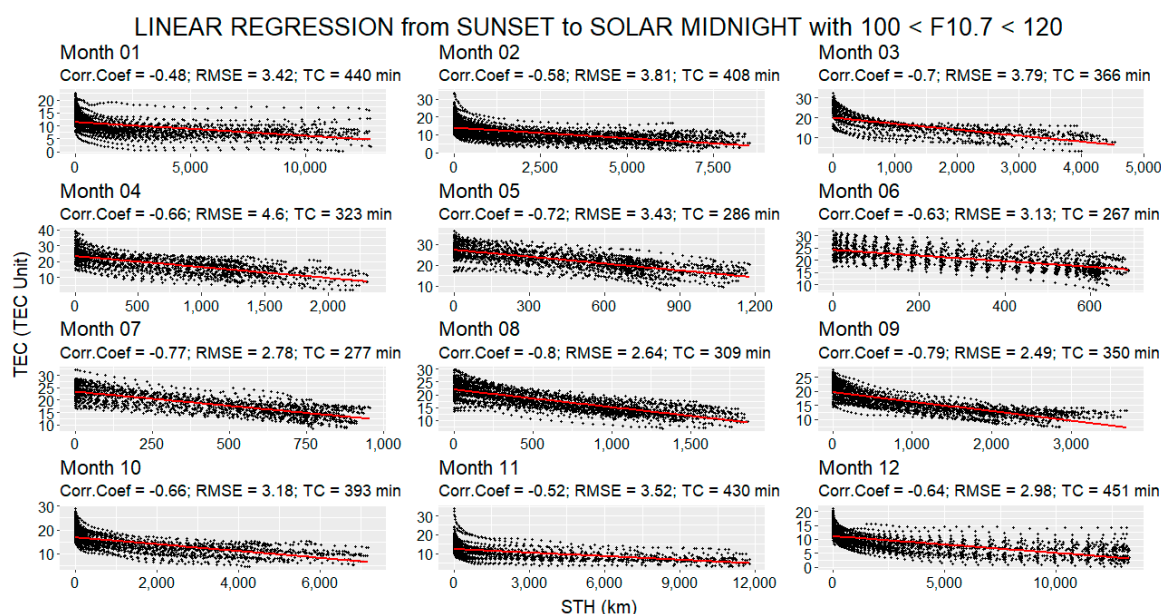


Figure 7. The 12 graphs show the *TEC*–*STH* scatter plots and the related linear regression line of 20 years (2000–2019) of data grouped by month, with solar activity level between 100 and 120 s.f.u., under quiet geomagnetic conditions and in the time interval between sunset and solar midnight. The linear correlation coefficient, the root mean squared error and the daily mean Time Coverage (TC) of the month are shown at the top of the graphs.

Another element that can be seen when looking at plots individually is the tendency of *TEC* to decrease (as *STH* increases) during spring–summer months always at similar rates within the same graph (the higher the *TEC* at sunset, the higher the *TEC* at midnight). This, during this period, when the correlation tends to be linear, gives the graphs the property of homoscedasticity, a desirable property, as it implies that the errors on *TEC* do not vary as *STH* varies. However, this element allows us to assume that the correlation between the two parameters has further margins for improvement if only the causes underlying the higher or lower electronic content at sunset within the ionospheric layer could be identified. Some table checks, carried out on a sample basis, show how the initial *TEC* variation is only rarely attributable to slight variations in solar or geomagnetic activity within the predetermined ranges but often remains unjustified.

Given the exponential trend detected by the graphs during the autumn–winter period, a monthly log-linear regression analysis was also performed for each of the six solar activity ranges. Figure 8 shows, again by way of example, the monthly graphs of the log-linear correlation analysis for the period October–March in the same range of solar activity as in Figure 7 ($100 \text{ s.f.u.} < F10.7 < 120 \text{ s.f.u.}$). The other log-linear plots can be found in the Supplementary Materials to this paper (Supplementary 2).

The *STH*–*TEC* log-linear correlation, actually, in the solar activity range between 100 and 120 s.f.u. and during the autumn–winter period, seems to fit better than the linear one as also confirmed by the higher correlation coefficient reported at the top of the plots.

The monthly correlation coefficients obtained from each of the two analyses (linear and log-linear) and for each solar activity range are compared in Table 2.

Adding to the visual analysis the comparison of the correlation coefficients, it appears that generally the months of March–April and September–October act as periods of transition between the two models. Instead, during the May–August and November–February periods, respectively, the linear model and the log-linear model seem to fit better. The only exception is the period October–March with $F10.7 < 80 \text{ s.f.u.}$ (very low solar activity), when neither model seems to fit well (correlation coefficients never greater than 0.5).

In Table 3, excluding the transition periods, for each of the two correlation models, are shown the seasonal means of the *TEC*–*STH* correlation coefficients of the months in

which each of the two models fits better than the other (May–August for the linear one and November–February for the log-linear one).

The seasonal means of the correlation coefficients obtained with each of the two models, with the exception of the winter period in conditions of very low solar activity ($F10.7 < 80$), show generally good values (with correlation coefficients always greater than 0.6).

In the case of linear correlation, there is no particular trend as the solar activity varies, while in the case of log-linear correlation, as the solar activity increases the correlation coefficient also increases. The case where $F10.7$ is greater than 160 *s.f.u.* is an exception showing a reduction of the log-linear correlation coefficient likely due to the major weights assumed by $F10.7$ outliers compared with a reduced population of records.

LOG-LINEAR REGRESSION from SUNSET to SOLAR MIDNIGHT with $100 < F10.7 < 120$

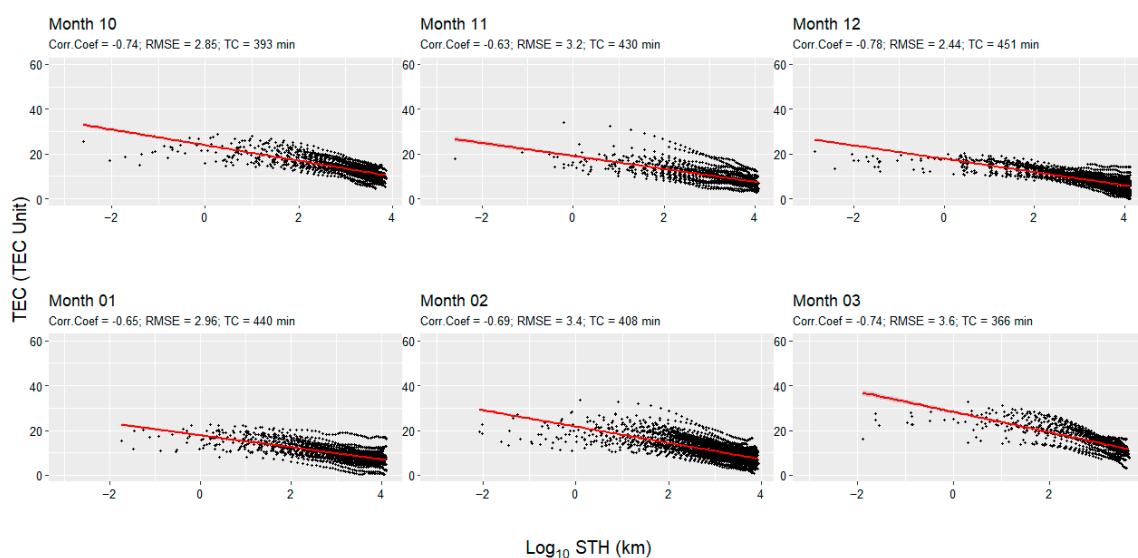


Figure 8. The 6 graphs show the TEC – STH scatter plots and the related log-linear regression line of 20 years (2000–2019) of data grouped by month, for the period October–March, with solar activity level between 100 and 120 *s.f.u.*, under quiet geomagnetic conditions and in the time interval between sunset and solar midnight. The log-linear correlation coefficient, the root mean squared error and the daily mean Time Coverage (TC) of the month are shown at the top of the graphs.

Table 2. TEC – STH correlation coefficient values for the sunset–solar midnight period obtained in each of the 12 months of the year in each of the 6 predetermined solar activity ranges and for both linear (Lin) and log-linear (Log-Lin) correlation. The values in bold are the maximums in the comparison between Lin and Log-Lin.

Month	Linear and Log-Linear TEC – STH Correlation Coefficients Comparison											
	$F10.7 < 80$		$80 < F10.7 < 100$		$100 < F10.7 < 120$		$120 < F10.7 < 140$		$140 < F10.7 < 160$		$F10.7 > 160$	
	Lin	Log-Lin	Lin	Log-Lin	Lin	Log-Lin	Lin	Log-Lin	Lin	Log-Lin	Lin	Log-Lin
1	−0.38	−0.45	−0.55	−0.67	−0.48	−0.65	−0.60	−0.78	−0.60	−0.79	−0.45	−0.63
2	−0.45	−0.50	−0.64	−0.68	−0.58	−0.69	−0.71	−0.82	−0.69	−0.81	−0.47	−0.53
3	−0.49	−0.50	−0.66	−0.64	−0.70	−0.74	−0.70	−0.72	−0.71	−0.71	−0.67	−0.66
4	−0.66	−0.56	−0.67	−0.60	−0.66	−0.57	−0.74	−0.69	−0.71	−0.68	−0.59	−0.63
5	−0.66	−0.53	−0.61	−0.49	−0.72	−0.58	−0.78	−0.67	−0.65	−0.56	−0.77	−0.70
6	−0.69	−0.55	−0.60	−0.50	−0.63	−0.52	−0.65	−0.56	−0.72	−0.61	−0.62	−0.52
7	−0.70	−0.58	−0.66	−0.53	−0.77	−0.63	−0.76	−0.62	−0.76	−0.64	−0.63	−0.53
8	−0.64	−0.53	−0.67	−0.57	−0.80	−0.69	−0.79	−0.67	−0.78	−0.65	−0.75	−0.63
9	−0.54	−0.52	−0.65	−0.63	−0.79	−0.78	−0.61	−0.66	−0.75	−0.76	−0.64	−0.65
10	−0.44	−0.42	−0.67	−0.58	−0.66	−0.74	−0.62	−0.73	−0.69	−0.83	−0.59	−0.70
11	−0.42	−0.44	−0.58	−0.60	−0.52	−0.63	−0.59	−0.74	−0.65	−0.82	−0.55	−0.75
12	−0.39	−0.45	−0.47	−0.60	−0.64	−0.78	−0.57	−0.75	−0.62	−0.82	−0.54	−0.76

Table 3. Averages of the *TEC–STH* correlation coefficients of the periods May–August (linear) and November–February (log-linear), in each of the 6 predetermined solar activity ranges.

	Seasonal Means of The <i>TEC–STH</i> Correlation Coefficients					
	F10.7 < 80	80 < F10.7 < 100	100 < F10.7 < 120	120 < F10.7 < 140	140 < F10.7 < 160	F10.7 > 160
Lin (May–Aug)	−0.67	−0.64	−0.73	−0.74	−0.73	−0.69
Log-Lin (Nov–Feb)	−0.46	−0.64	−0.69	−0.77	−0.81	−0.67

4. Discussion

The availability of an accurate solar illumination model of the Earth’s atmosphere could be functional to the improvement of studies relating to the whole series of applications (*AGW/TID*, vertical pressure and temperature profiles, neutral and ionic atmospheric components, electromagnetic waves, total electron content, ionospheric empirical models, etc.) already discussed in the introductory section.

The *TEC–STH* dependence relationships that were determined, on the other hand, have the ultimate aim of describing and better predicting the nocturnal behavior of the *TEC* parameter to obtain useful information for improving the processing of empirical models and forecasting models. In this sense, also given the absence of previous studies on the same topic, the investigation initiated represents a starting point for proceeding to more detailed analyses that can open up different directions of research.

This first *STH–TEC* correlation analysis seems to indicate that, in the absence of geomagnetic activity and in the post-sunset hours, the trend with which the *TEC* decreases, as the portion of the ionosphere illuminated by the sun decreases, tends to be linear during the summer period and exponential during the winter period. The exponential decreasing trend is best suited in conditions of high solar activity.

The fact that the *TEC* has a decreasing trend (as *STH* increases) always at similar rates within the monthly time intervals during the spring/summer period suggests that the relationship could be also investigated by a multivariate regression analysis involving other potential covariates (e.g., vertical temperature profile, portion of the atmosphere crossed by incident solar radiation, Sun’s declination angle, etc.).

Supplementary Materials: The following are available online at <https://www.mdpi.com/article/10.3390/earth2020012/s1>. Supplementary 1: Time dependent *STH* code. Supplementary 2: *TEC–STH* Regression Plots.

Author Contributions: Conceptualization, R.C.; Data curation, R.C.; Investigation, V.T.; Methodology, R.C.; Resources, V.T.; Software, R.C.; Supervision, V.T.; Validation, R.C. and V.T.; Writing—original draft, R.C.; Writing—review & editing, V.T. All authors have read and agreed to the published version of the manuscript.

Funding: This research received no external funding.

Institutional Review Board Statement: Not applicable.

Informed Consent Statement: Not applicable.

Acknowledgments: Roberto Colonna acknowledges Ermenegildo Caccese and Sergio Ciamprone for mathematical support, Nicola Capece for IT technical assistance and the reviewers for their valuable contributions and time devoted to improving the quality of the manuscript.

Conflicts of Interest: The authors declare no conflict of interest.

References

1. Beer, T. Supersonic Generation of Atmospheric Waves. *Nature* **1973**, *242*, 34. [CrossRef]
2. Dominici, P.; Bianchi, C.; Cander, L.; De Francheschi, G.; Scotto, C.; Zolesi, B. Preliminary results on the ionospheric structure at dawn time observed during HRIS campaigns. *Ann. Geophys.* **1994**, *37*, 71–76. [CrossRef]

3. Vasilyev, V.P. Latitude location of the source of the ionospheric short-term terminator disturbances. *Geomag. Aeron.* **1996**, *35*, 589.
4. Galushko, V.G.; Paznukhov, V.V.; Yampolski, Y.M.; Foster, J.C. Incoherent scatter radar observations of AGW/TID events generated by the moving solar terminator. *Ann. Geophys.* **1998**, *16*, 821–827. [\[CrossRef\]](#)
5. Afraimovich, E.L.; Edemskiy, I.K.; Leonovich, A.S.; Leonovich, L.A.; Voeykov, S.V.; Yasyukevich, Y.V. MHD nature of night-time MSTIDs excited by the solar terminator. *Geophys. Res. Lett.* **2009**, *36*. [\[CrossRef\]](#)
6. MacDougall, J.; Jayachandran, P. Solar terminator and auroral sources for traveling ionospheric disturbances in the midlatitude F region. *J. Atmos. Sol. Terr. Phys.* **2011**, *73*, 2437–2443. [\[CrossRef\]](#)
7. Fowler, D.; Pilegaard, K.; Sutton, M.; Ambus, P.; Raivonen, M.; Duyzer, J.; Simpson, D.; Fagerli, H.; Fuzzi, S.; Schjoerring, J.; et al. Atmospheric composition change: Ecosystems–Atmosphere interactions. *Atmos. Environ.* **2009**, *43*, 5193–5267. [\[CrossRef\]](#)
8. Karpov, I.V.; Bessarab, F.S. Model studying the effect of the solar terminator on the thermospheric parameters. *Geomagn. Aeron.* **2008**, *48*, 209–219. [\[CrossRef\]](#)
9. Afraimovich, E.L.; Edemskiy, I.K.; Voeykov, S.V.; Yasyukevich, Y.V.; Zhivetiev, I.V. The first GPS-TEC imaging of the space structure of MS wave packets excited by the solar terminator. *Ann. Geophys.* **2009**, *27*, 1521–1525. [\[CrossRef\]](#)
10. Bespalova, A.V.; Fedorenko, A.; Cheremnykh, O.; Zhuk, I. Satellite observations of wave disturbances caused by moving solar TERMINATOR. *J. Atmos. Sol. Terr. Phys.* **2016**, *140*, 79–85. [\[CrossRef\]](#)
11. Pignalberi, A.; Habarulema, J.; Pezzopane, M.; Rizzi, R. On the Development of a Method for Updating an Empirical Climatological Ionospheric Model by Means of Assimilated vTEC Measurements from a GNSS Receiver Network. *Space Weather* **2019**, *17*, 1131–1164. [\[CrossRef\]](#)
12. Verhulst, T.G.W.; Stankov, S.M. Height-dependent sunrise and sunset: Effects and implications of the varying times of occurrence for local ionospheric processes and modelling. *Adv. Space Res.* **2017**, *60*, 1797–1806. [\[CrossRef\]](#)
13. Kintner, P.M.; Ledvina, B.M. The ionosphere, radio navigation, and global navigation satellite systems. *Adv. Space Res.* **2005**, *35*, 788–811. [\[CrossRef\]](#)
14. Rocken, C.; Kuo, Y.H.; Schreiner, W.S.; Hunt, D.; Sokolovskiy, S.; McCormick, C. COSMIC System Description. *Terr. Atmos. Ocean. Sci.* **2000**, *11*, 21–52. [\[CrossRef\]](#)
15. Hajj, G.A.; Lee, L.C.; Pi, X.; Romans, L.J.; Schreiner, W.S.; Straus, P.R.; Wang, C. COSMIC GPS Ionospheric Sensing and Space Weather. *Terr. Atmos. Ocean. Sci.* **2000**, *11*, 235–272. [\[CrossRef\]](#)
16. Parrot, M. The micro-satellite DEMETER. *J. Geodyn.* **2002**, *33*, 535–541. [\[CrossRef\]](#)
17. Tiwari, R.; Bhattacharya, S.; Purohit, P.K.; Gwal, A.K. Effect of TEC Variation on GPS Precise Point at Low Latitude. *Open Atmos. Sci. J.* **2009**, *3*, 1–12. [\[CrossRef\]](#)
18. Fayose, R.S.; Babatunde, R.; Oladosu, O.; Groves, K. Variation of Total Electron Content [TEC] and Their Effect on GNSS over Akure, Nigeria. *Appl. Phys. Res.* **2012**, *4*, 105. [\[CrossRef\]](#)
19. Freund, F. Pre-earthquake signals: Underlying physical processes. *J. Asian Earth Sci.* **2011**, *41*, 383–400. [\[CrossRef\]](#)
20. Pulnits, S.; Ouzounov, D. Lithosphere–Atmosphere–Ionosphere Coupling (LAIC) model—An unified concept for earthquake precursors validation. *J. Asian Earth Sci.* **2011**, *41*, 371–382. [\[CrossRef\]](#)
21. Kuo, C.L.; Huba, J.D.; Joyce, G.; Lee, L.C. Ionosphere plasma bubbles and density variations induced by pre-earthquake rock currents and associated surface charges. *J. Geophys. Res. Space Phys.* **2011**, *116*. [\[CrossRef\]](#)
22. Kuo, C.L.; Lee, L.C.; Huba, J.D. An improved coupling model for the lithosphere-atmosphere-ionosphere system. *J. Geophys. Res. Space Phys.* **2014**, *119*, 3189–3205. [\[CrossRef\]](#)
23. Yang, S.; Asano, T.; Hayakawa, M. Abnormal Gravity Wave Activity in the Stratosphere Prior to the 2016 Kumamoto Earthquakes. *J. Geophys. Res. Space Phys.* **2019**, *124*, 1410–1425. [\[CrossRef\]](#)
24. Meeus, J. *Astronomical Algorithms*, 2nd ed.; Willmann-Bell Inc.: Richmond, VA, USA, 1998.
25. NOAA. Solar Calculation Details. Available online: <https://www.esrl.noaa.gov/gmd/grad/solcalc/calcdetails.html> (accessed on 8 April 2021).
26. Astronomical Almanac for the Year 2010 and Its Companion the Astronomical Almanac Online. Available online: <http://www.admiraltyshop.co.uk> (accessed on 8 April 2021).
27. R Core Team. *R: A Language and Environment for Statistical Computing*; R Foundation for Statistical Computing: Vienna, Austria, 2013; Available online: <http://www.R-project.org/> (accessed on 8 April 2021).
28. Eyelade, V.A.; Adewale, A.O.; Akala, A.O.; Bolaji, O.S.; Rabi, A.B. Studying the variability in the diurnal and seasonal variations in GPS total electron content over Nigeria. *Ann. Geophys.* **2017**, *35*, 701–710. [\[CrossRef\]](#)
29. Yuen, P.; Roelofs, T. Seasonal variations in ionospheric total electron content. *J. Atmos. Sol. Terr. Phys.* **1967**, *29*, 321–326. [\[CrossRef\]](#)
30. Zhao, B.; Wan, W.; Liu, L.; Mao, T.; Ren, Z.; Wang, M.; Christensen, A.B. Features of annual and semiannual variations derived from the global ionospheric maps of total electron content. *Ann. Geophys.* **2007**, *25*, 2513–2527. [\[CrossRef\]](#)
31. Tsai, H.-F.; Liu, J.-Y.; Tsai, W.-H.; Liu, C.-H.; Tseng, C.-L.; Wu, C.-C. Seasonal variations of the ionospheric total electron content in Asian equatorial anomaly regions. *J. Geophys. Res. Space Phys.* **2001**, *106*, 30363–30369. [\[CrossRef\]](#)
32. Perevalova, N.; Polyakova, A.; Zalozovski, A. Diurnal variations of the total electron content under quiet helio-geomagnetic conditions. *J. Atmos. Sol. Terr. Phys.* **2010**, *72*, 997–1007. [\[CrossRef\]](#)
33. IONOLAB. Available online: <http://www.ionolab.org/index.php?page=ionolabtec&language=en> (accessed on 9 February 2021).
34. Sezen, U.; Arikan, F.; Arikan, O.; Ugurlu, O.; Sadeghimorad, A. Online, automatic, near-real time estimation of GPS-TEC: IONOLAB-TEC. *Space Weather* **2013**, *11*, 297–305. [\[CrossRef\]](#)

-
35. Arikan, F.; Nayir, H.; Sezen, U.; Arikan, O. Estimation of single station interfrequency receiver bias using GPS-TEC. *Radio Sci.* **2008**, *43*, 4. [[CrossRef](#)]
 36. OMINWeb. Available online: <https://omniweb.gsfc.nasa.gov/form/dx1.html> (accessed on 8 April 2021).