

Supplementary Materials

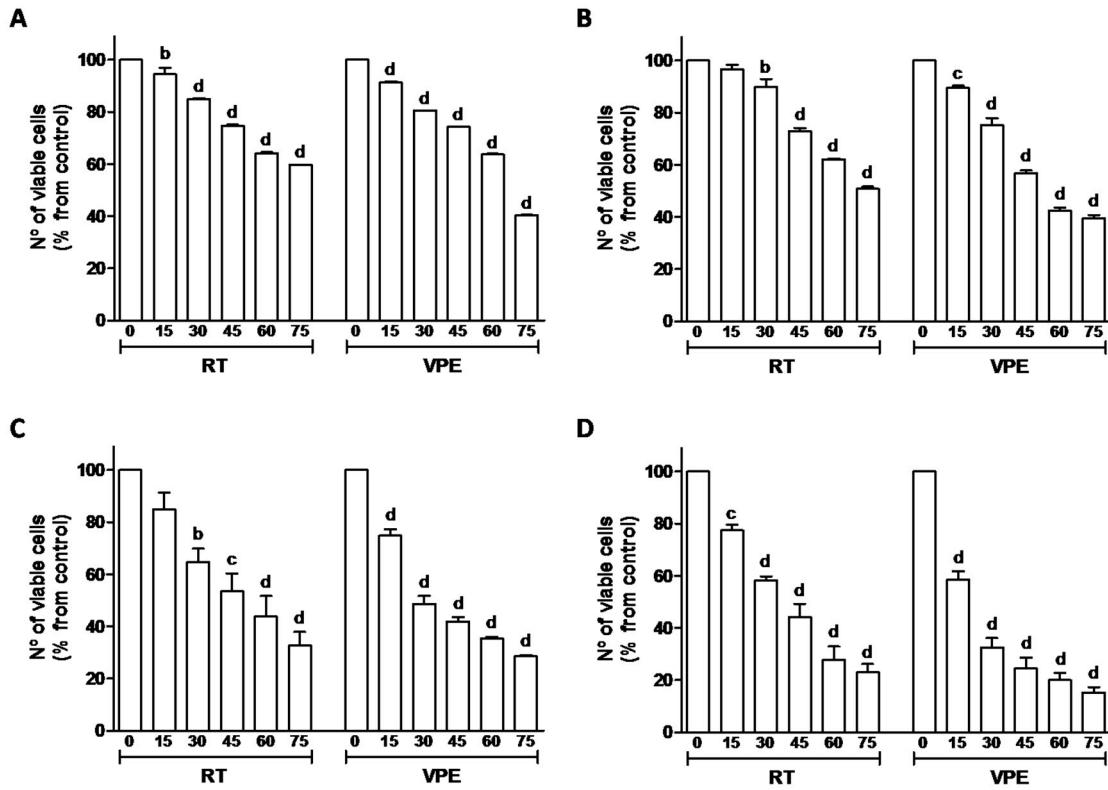


Figure S1. Effect of VPR extracts on cell viability of HCT116 (A&B) and RKO (C&D) cells, as measured by the MTT assay. Cells were incubated with different concentrations of RT and VPE for 24 h (A&C) or 48 h (B&D). Values are expressed as mean \pm SEM of three independent experiments. Letters represent statistical significance: **b** $p \leq 0.01$, **c** $p \leq 0.001$, **d** $p \leq 0.0001$ when compared with control by one-way ANOVA.

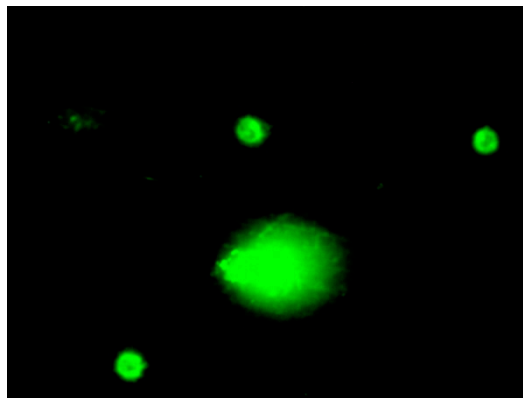


Figure S2. Representative image obtained by comet assay showing the DNA damage caused by 48h exposure to etoposide (ET, positive control).

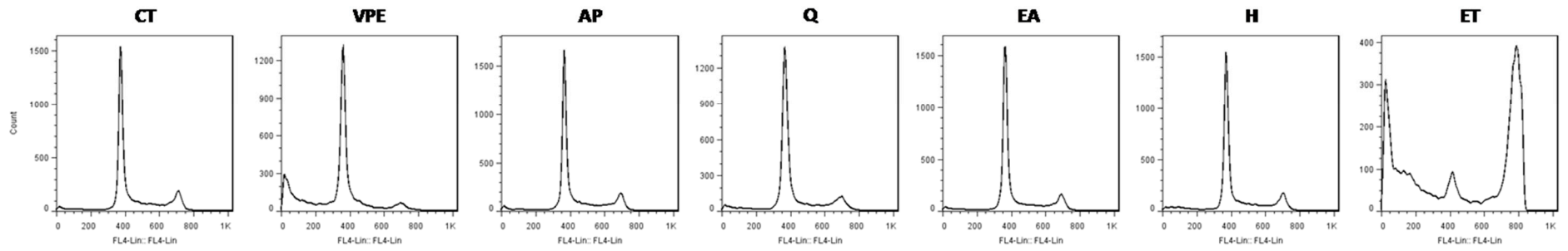
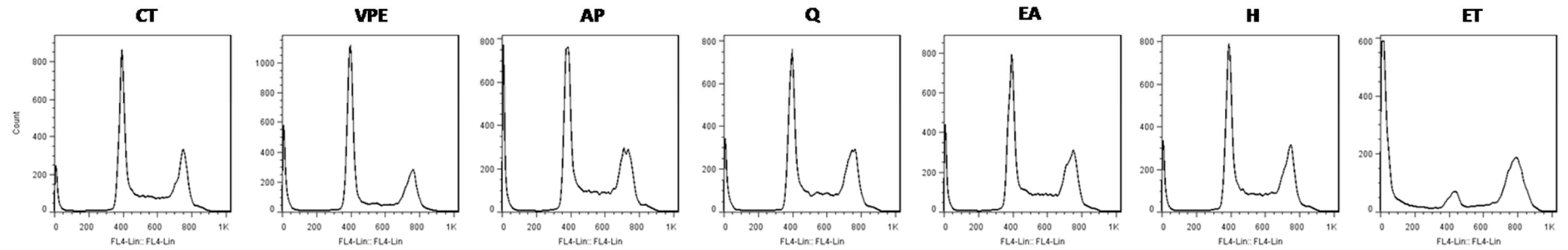
A**B**

Figure S3. Representative histograms of the effect of VPE (IC_{50}) and its major constituents on cell cycle of HCT116 (A) and RKO (B) cells for 48 h, as assessed by flow cytometry.