

Enhanced thermal stability and chiral directing effects in heterochiral self-assembled gels

William Edwards^a and David K. Smith^{*,a}

SUPPLEMENTARY INFORMATION

Contents

- 1 Thermal Stability Data
- 2 Variable Temperature NMR Spectroscopy Data

1. Thermal Stability

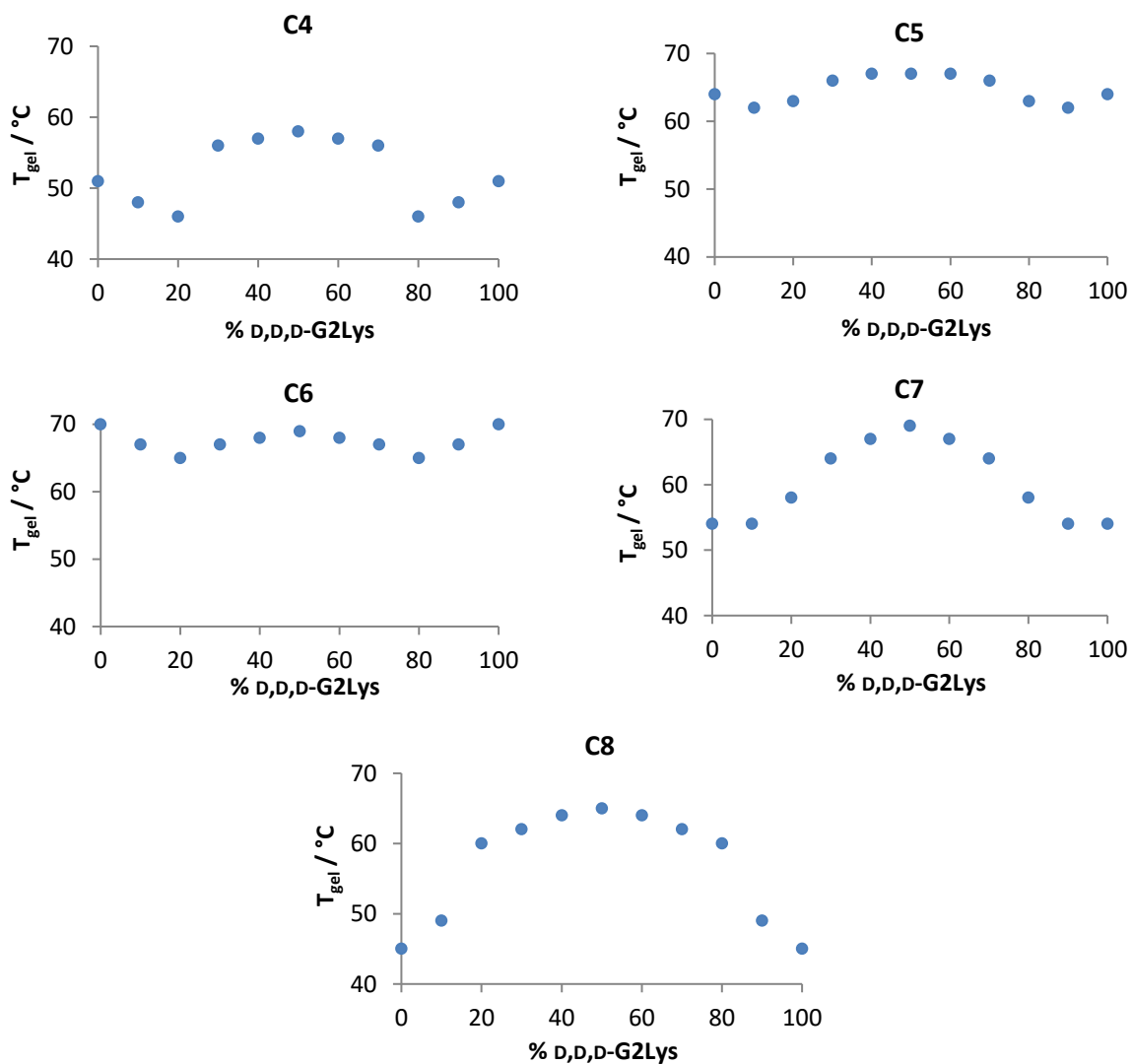


Figure S1. Effect of enantiomeric mixing on T_{gel} , as measured by tube inversion. Concentration of amine is 10 mM, and total concentration of dendron (D,D,D+L,L,L) is also 10 mM.

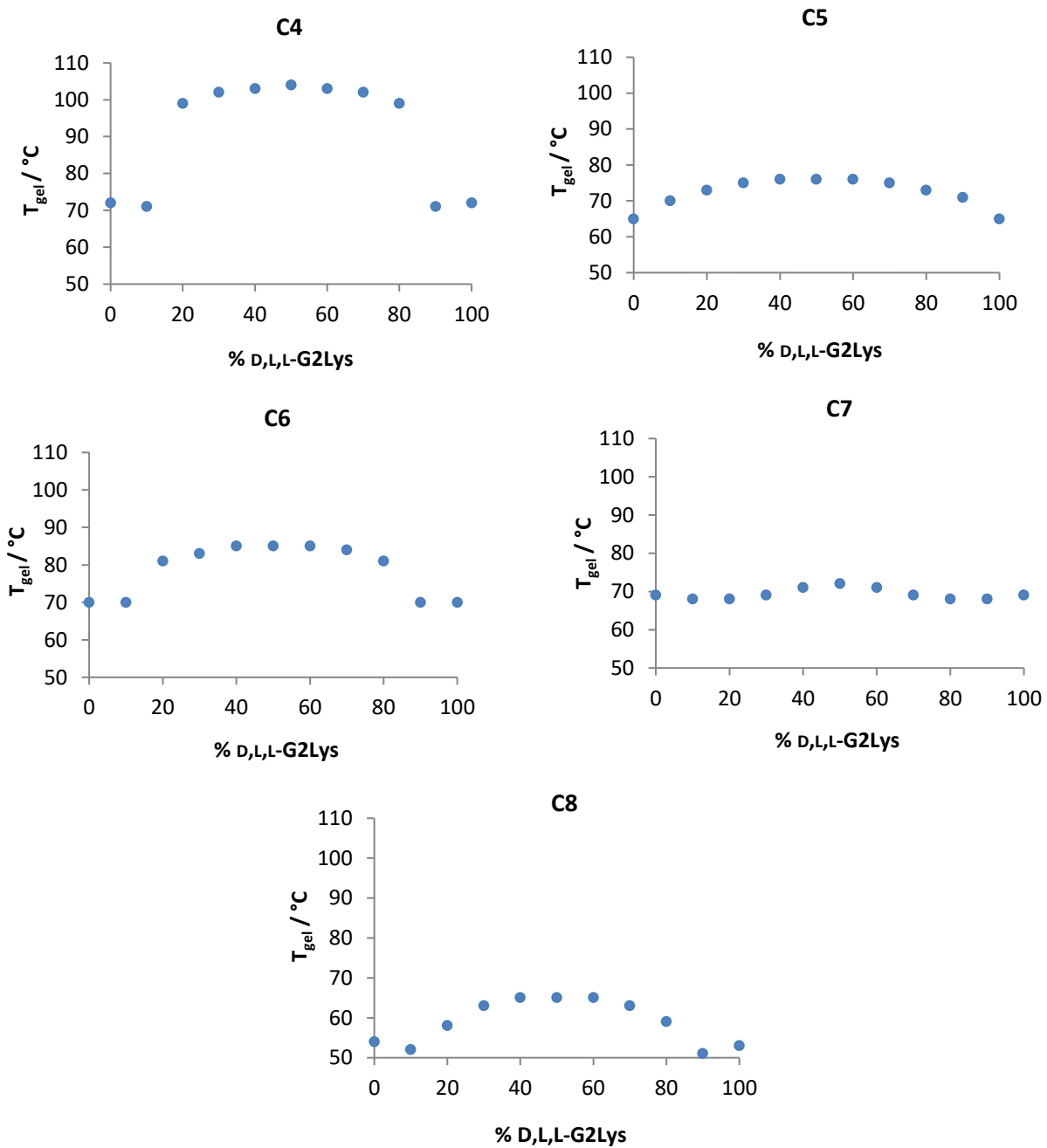


Figure S2. Effect of enantiomeric mixing on T_{gel} , as measured by tube inversion. Concentration of amine is 10 mM, and total concentration of dendron (D,L,L+L,D,D) is also 10 mM

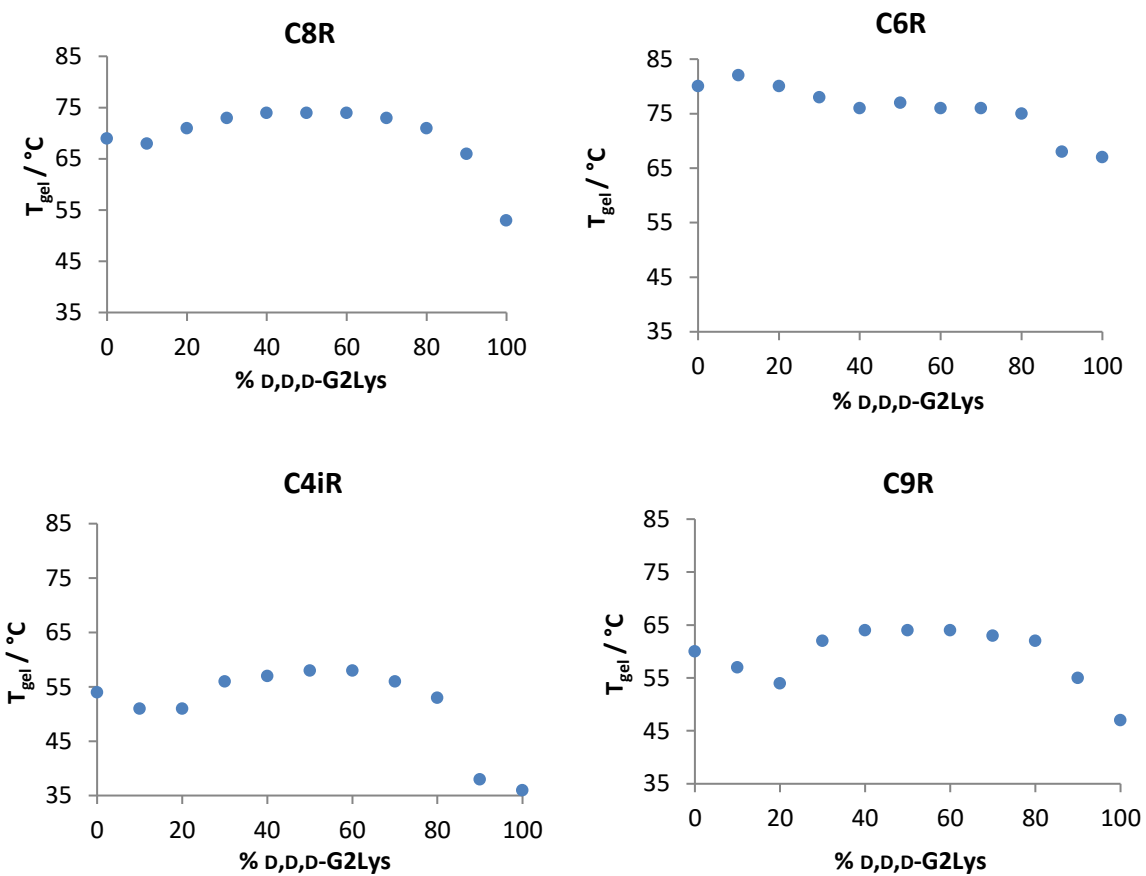


Figure S3. Effect of mixing L,L,L and D,D,D (total combined concentration 10 mM) on the T_{gel} value in the presence of different acyclic chiral amines.

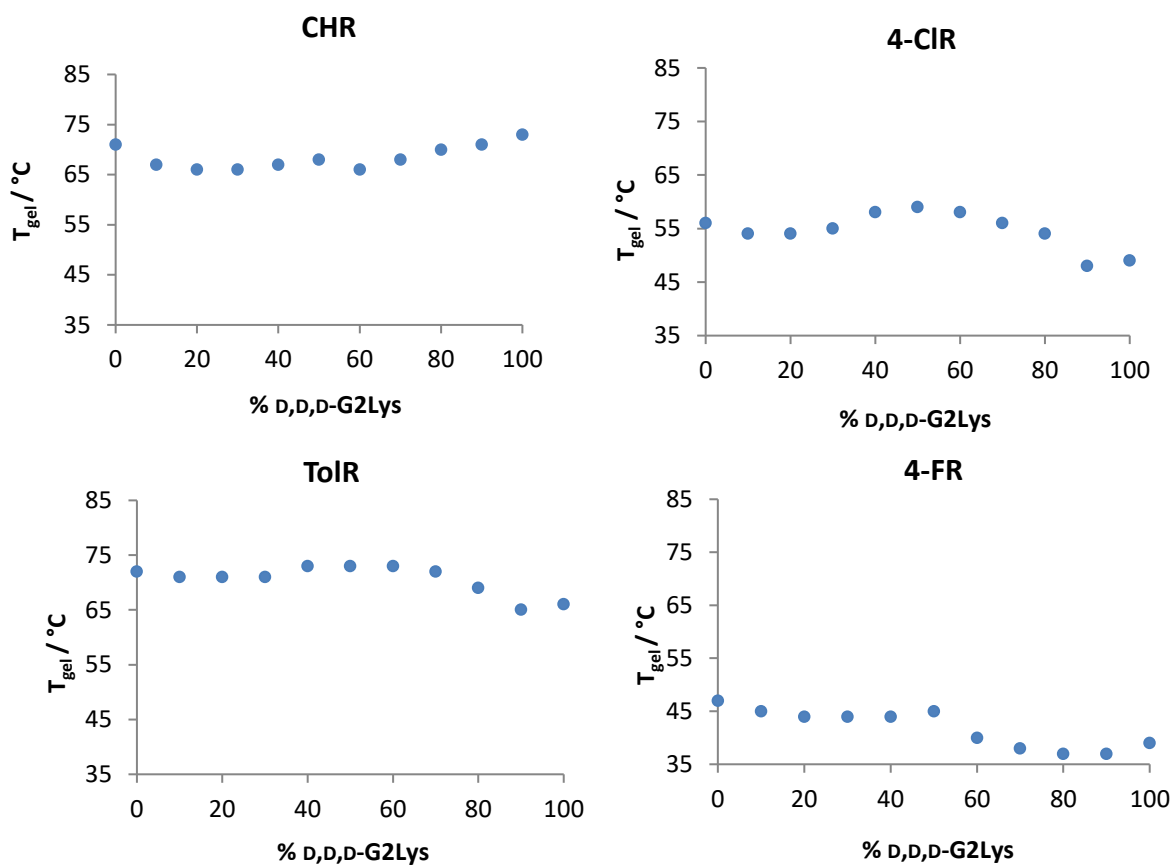


Figure S4. Effect of mixing L,L,L and D,D,D (total combined concentration 10 mM) on the T_{gel} value in the presence of different cyclic chiral amines.

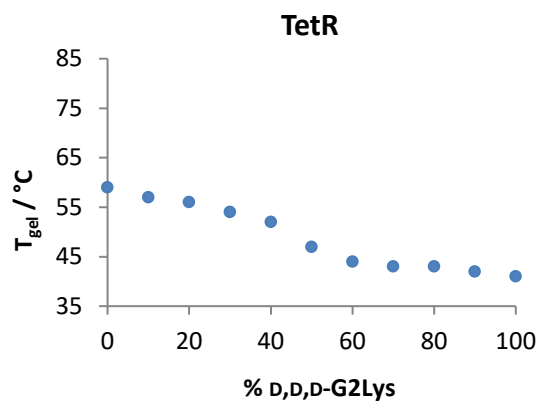
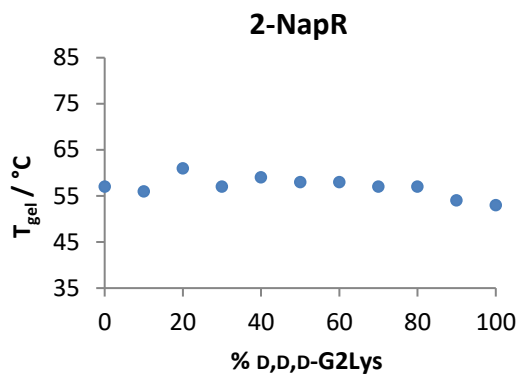
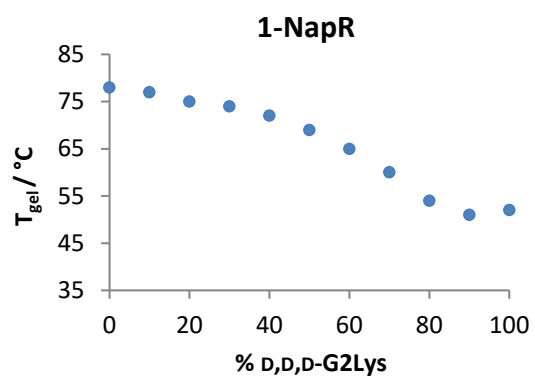


Figure S5. Effect of mixing L,L,L and D,D,D (total combined concentration, 10 mM) on the T_{gel} value in the presence of different hindered chiral amines (10 mM).

2. Variable Temperature NMR Spectroscopy Data

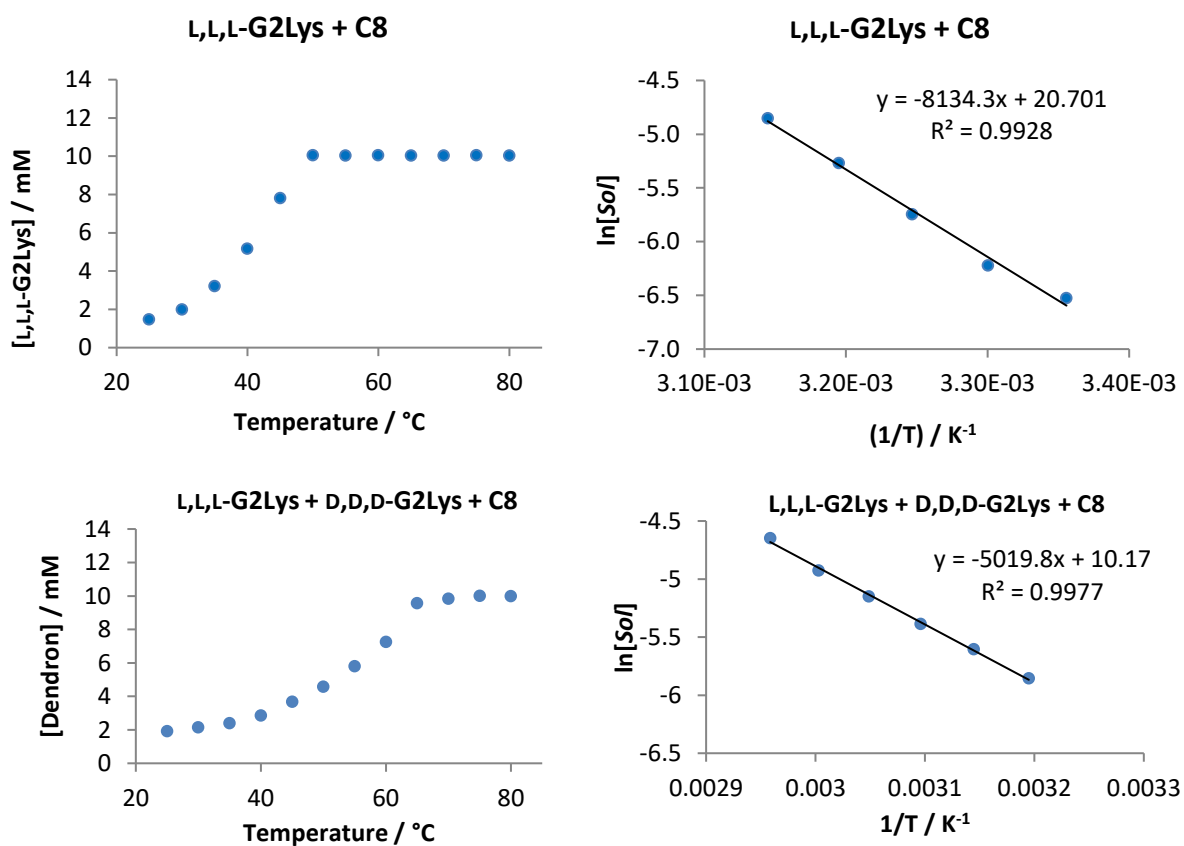


Figure S6. Concentration of lysine dendron visible in gels of **L,L,L-G2Lys**, or **L,L,L-G2Lys** and **D,D,D-G2Lys** with **C8** as temperature increases (solvent: toluene-*d*₈). Van 't Hoff plots of gels formed from **L,L,L-G2Lys** or **L,L,L-G2Lys** and **D,D,D-G2Lys** with **C8**.

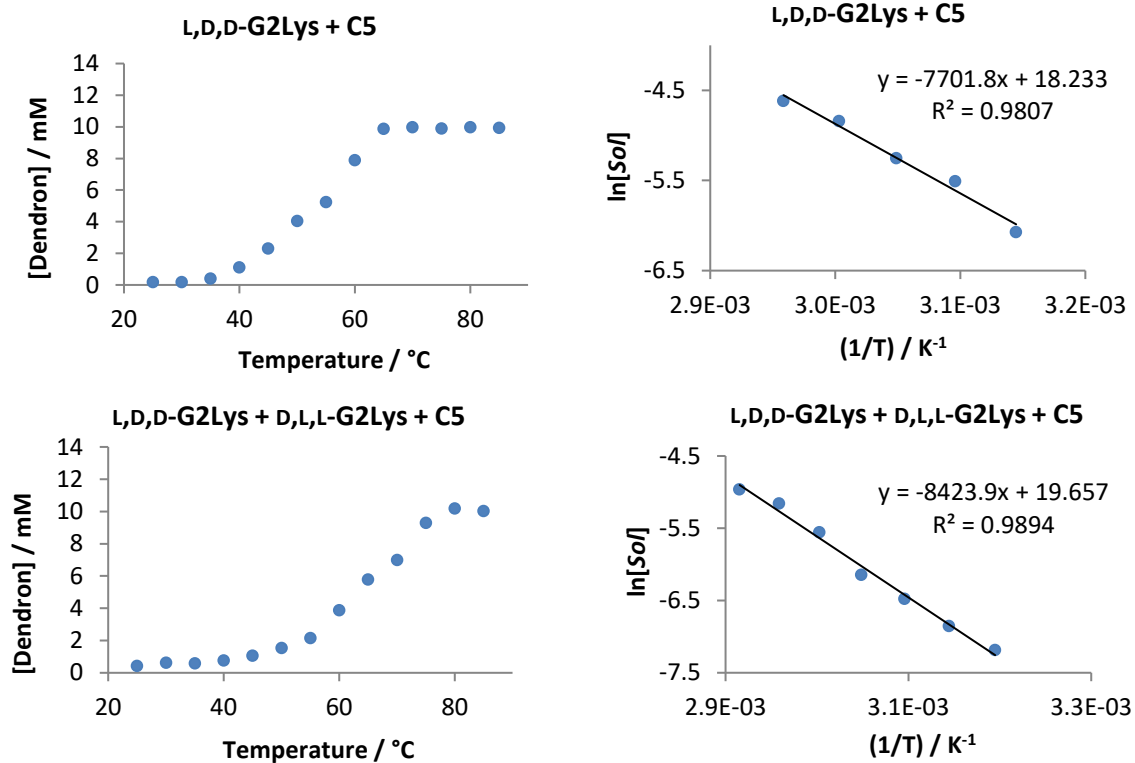


Figure S7. Concentration of lysine dendron visible in gels of **L,D,D-G2Lys**, or **L,D,D-G2Lys** and **D,L,L-G2Lys** with **C5** as temperature increases (solvent: toluene-*d*₈). Van 't Hoff plots of gels formed from **L,D,D-G2Lys** or **L,D,D-G2Lys** and **D,L,L-G2Lys** with **C5**.

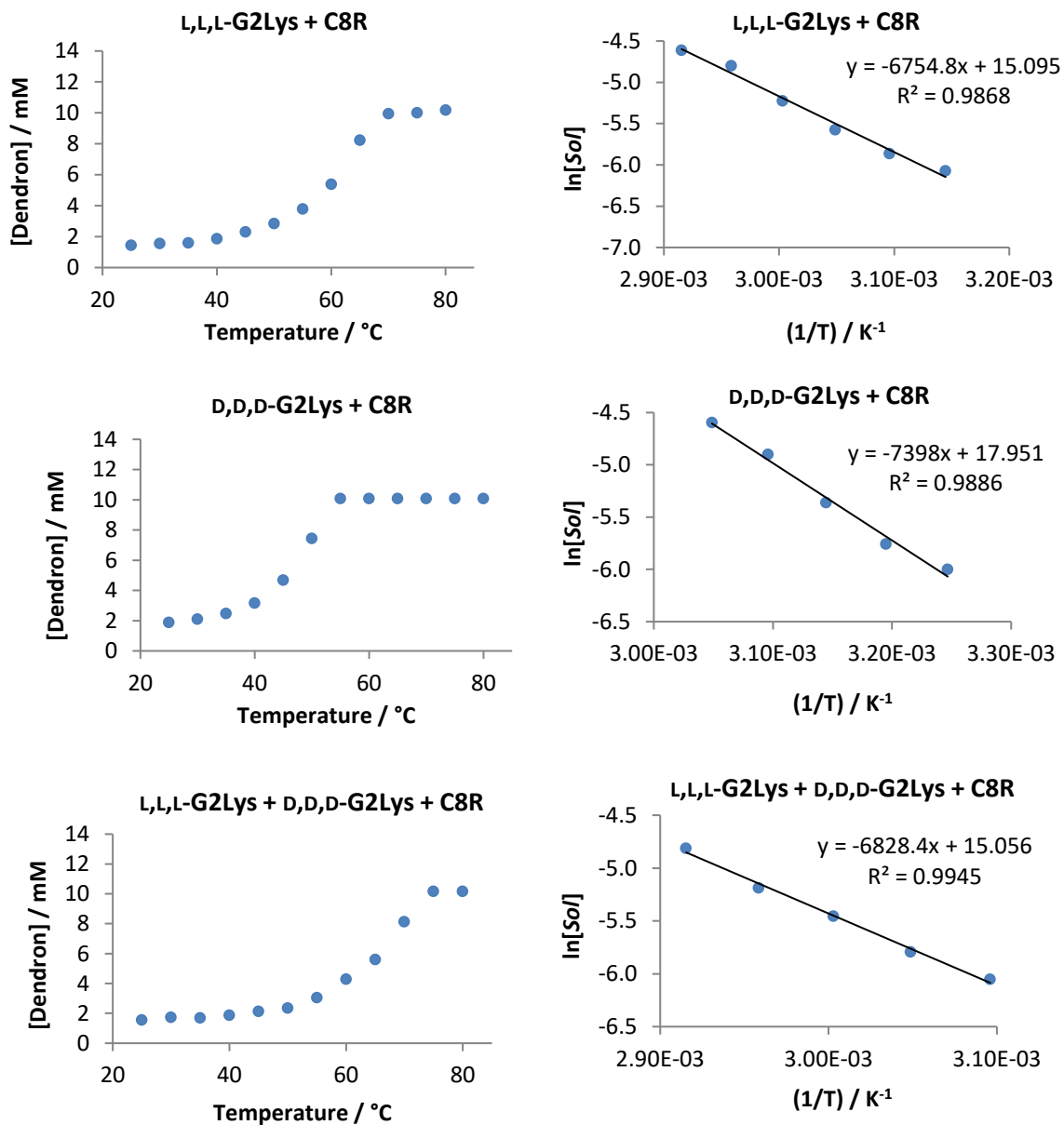


Figure S8. Concentration of lysine dendron visible in gels of **L,L,L-G2Lys**, or **D,D,D-G2Lys**, or **L,L,L-G2Lys** and **D,D,D-G2Lys** with **C8R** as temperature increases (solvent: toluene-*d*₈). Van't Hoff plots of gels formed from **L,L,L-G2Lys** or **D,D,D-G2Lys** or **L,L,L-G2Lys** and **D,D,D-G2Lys** with **C8R**.