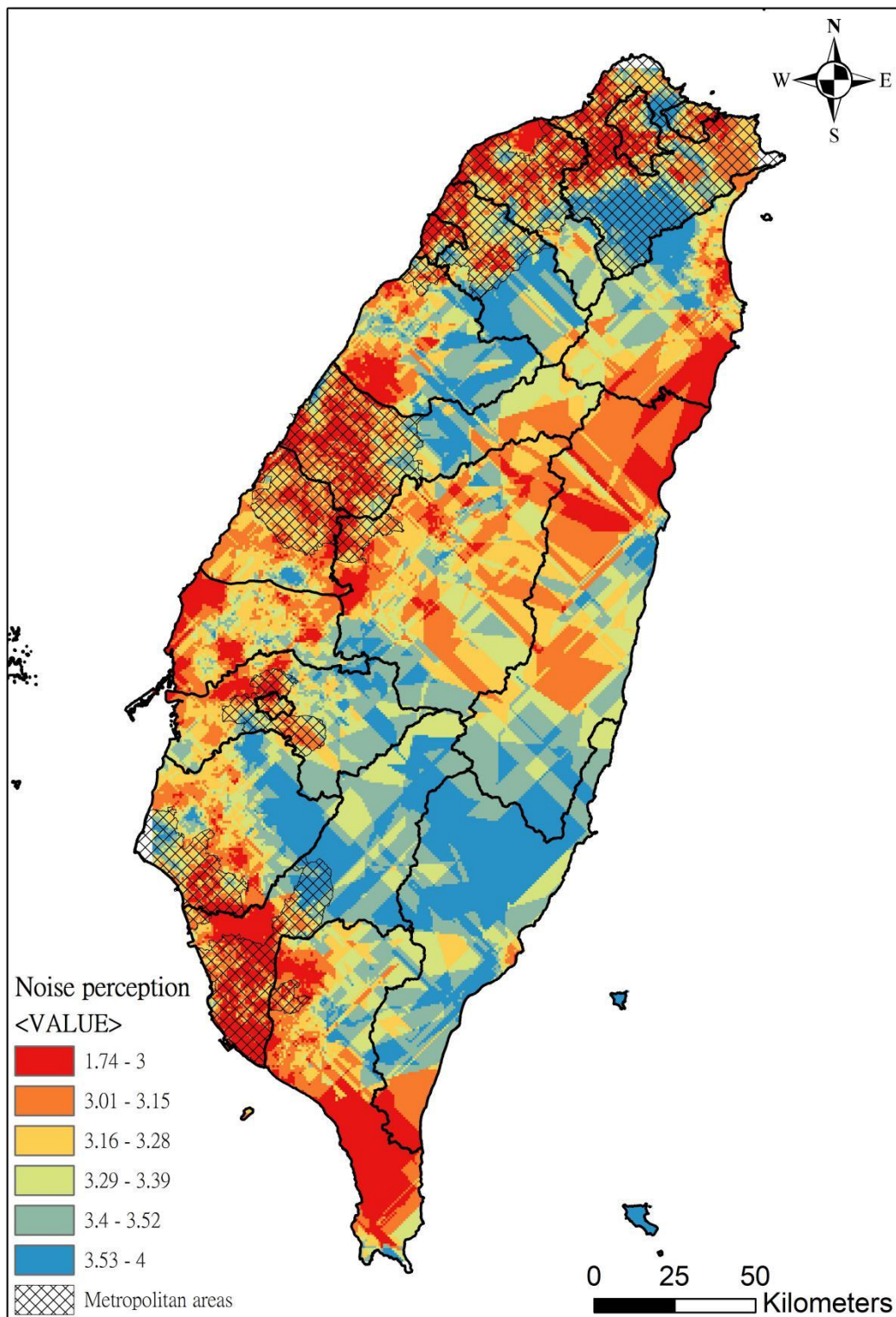
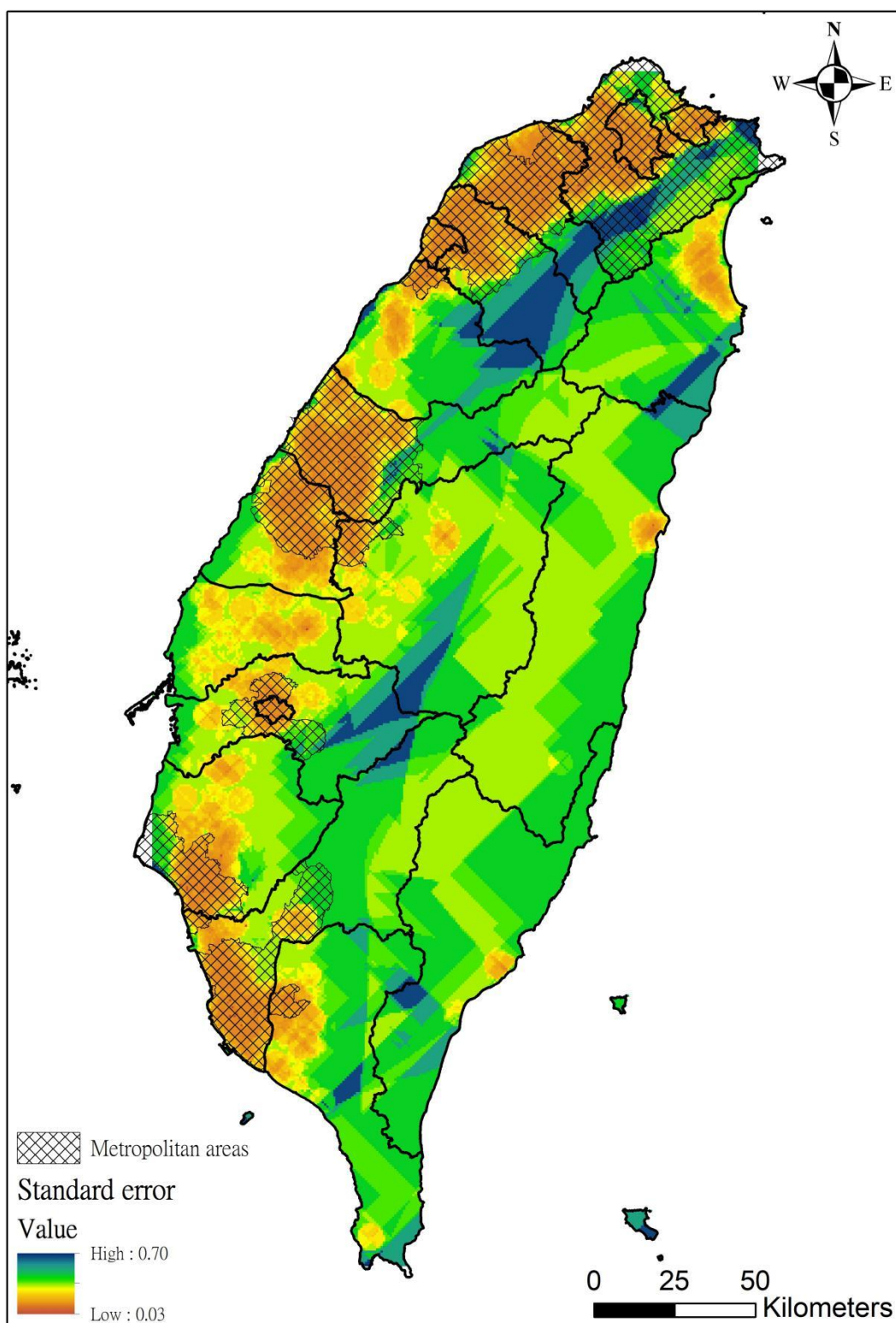


**Figure S1.** Distribution of the MJ participants for the years 2003-2015.



**Figure S2.** Perceived noise map (scale of 1-4 where 1: extremely serious, 2: serious, 3: not serious, and 4: not serious at all).



**Figure S3.** Standard error map of predicted perceived noise.

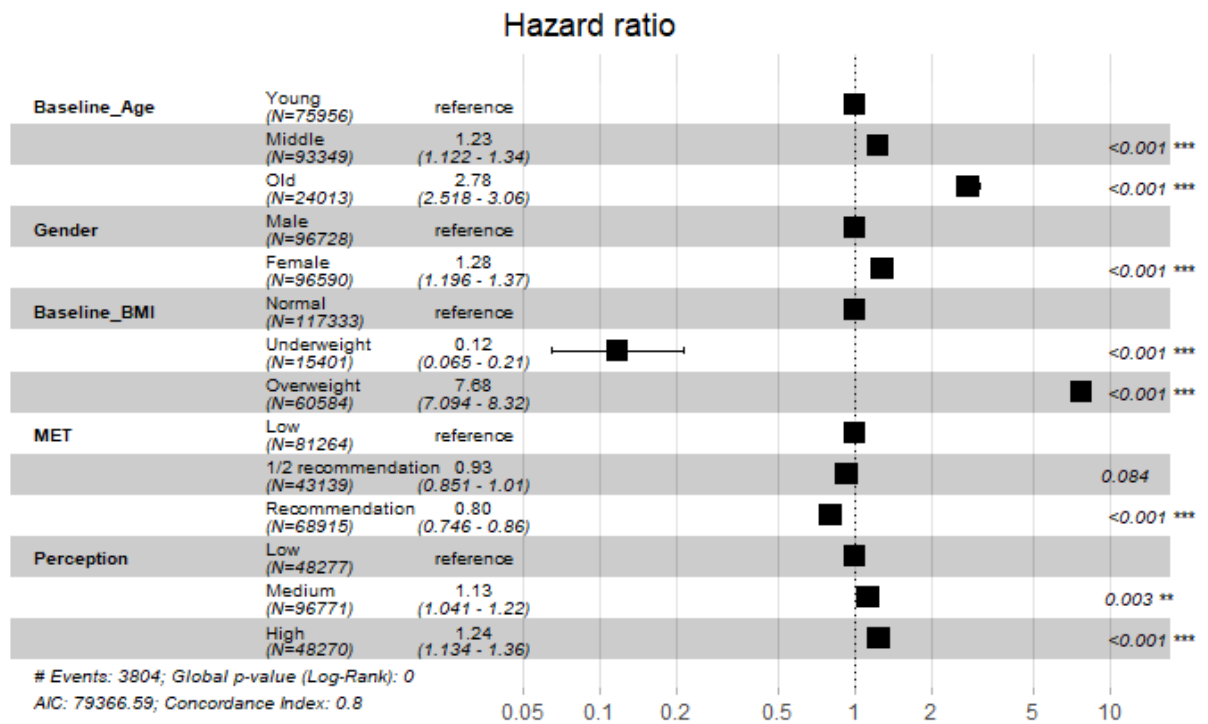


Figure S4. Hazard ratio (and 95% confidence intervals (CI)) of metabolic syndrome ( $R^2=0.71$ ).

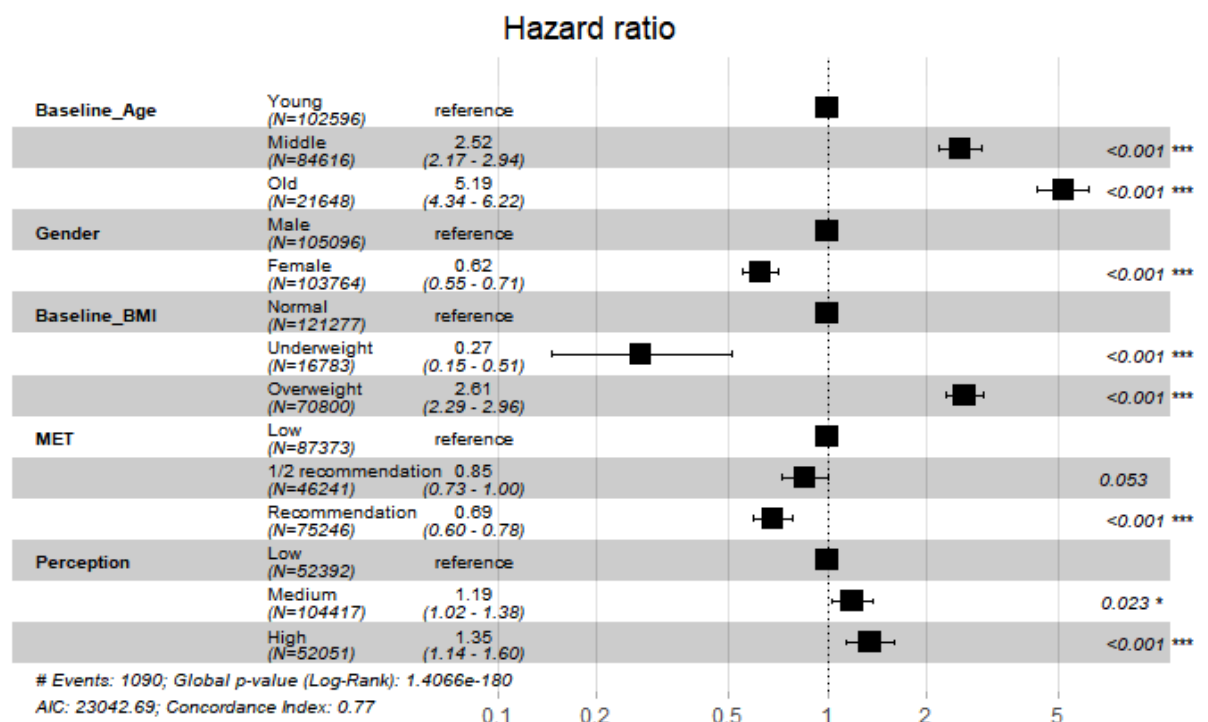
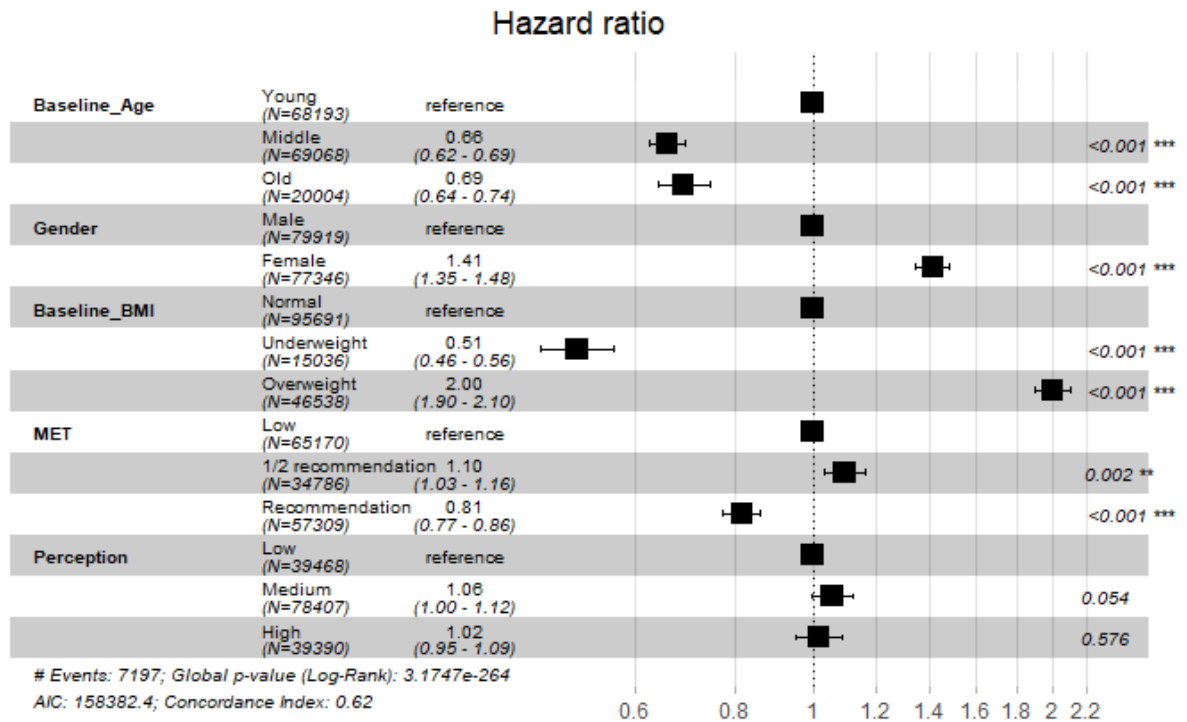
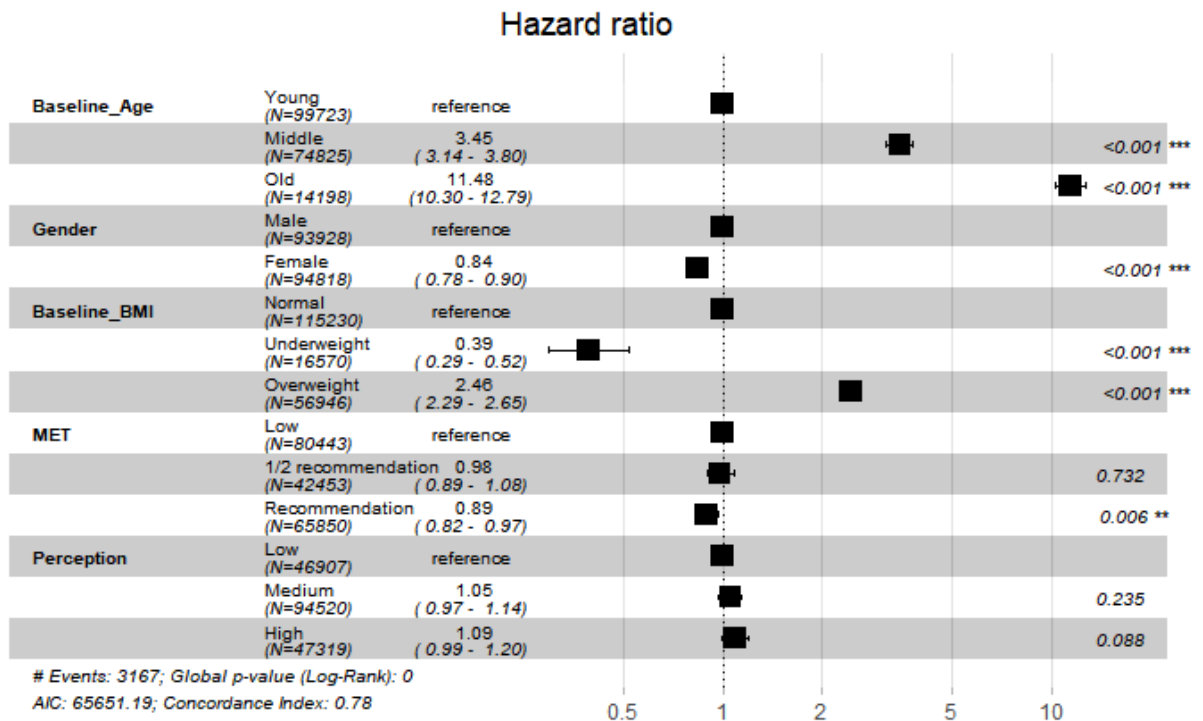


Figure S5. Hazard ratio (and 95% confidence intervals (CI)) of hypertriglyceridemia ( $R^2= 0.55$ ).





**Figure S6.** Hazard ratio (and 95% confidence intervals (CI)) of low HDL cholesterol ( $R^2=0.16$ ).



**Figure S7.** Hazard ratio (and 95% confidence intervals (CI)) of hypertension ( $R^2=0.50$ ).

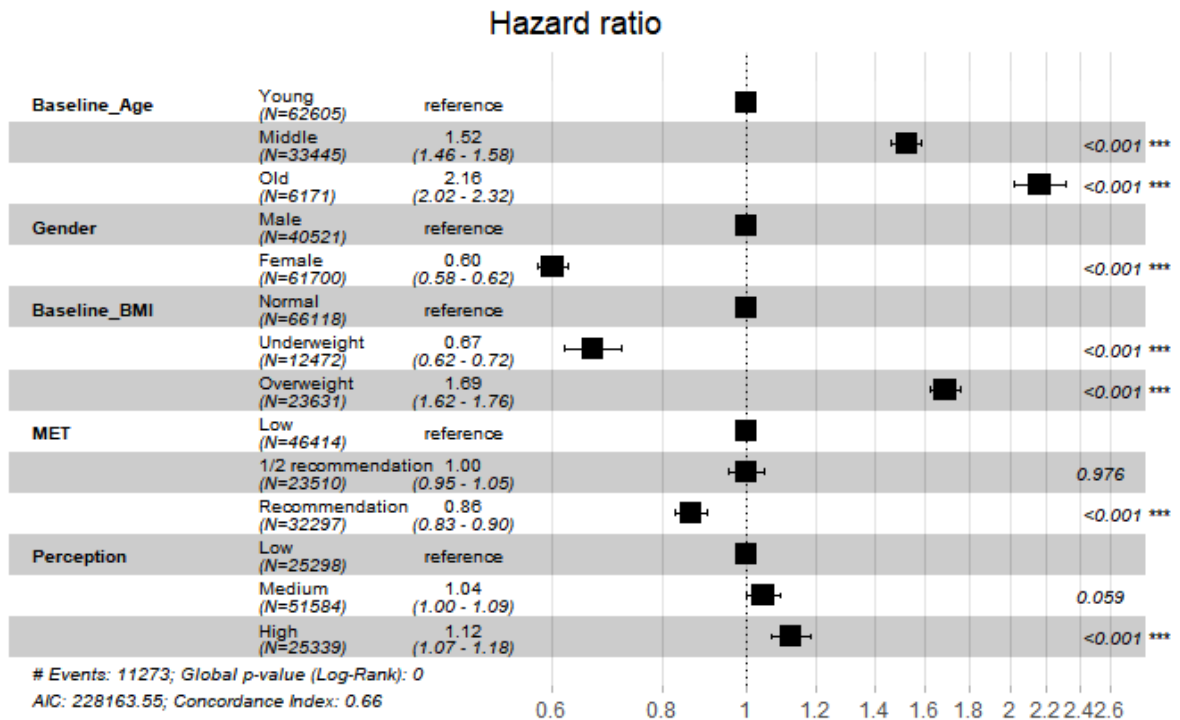


Figure S8. Hazard ratio (and 95% confidence intervals (CI)) of hyperglycemia ( $R^2=0.23$ ).

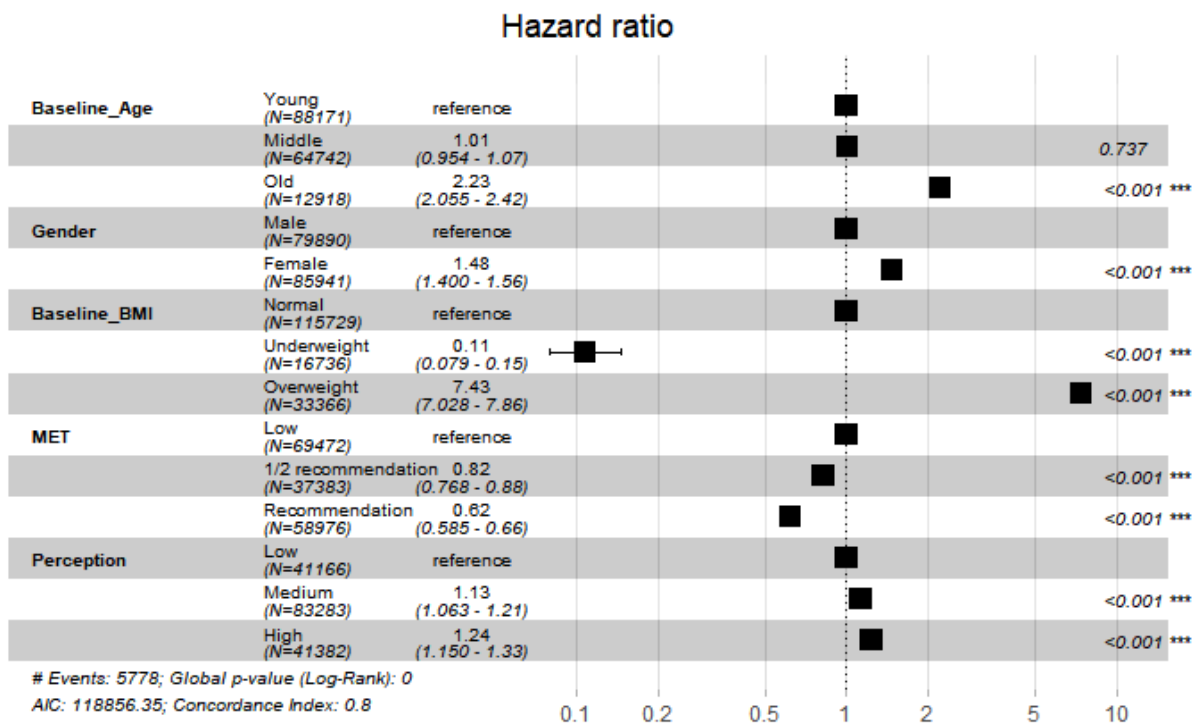


Figure S9. Hazard ratio (and 95% confidence intervals (CI)) of abdominal obesity ( $R^2=0.68$ ).