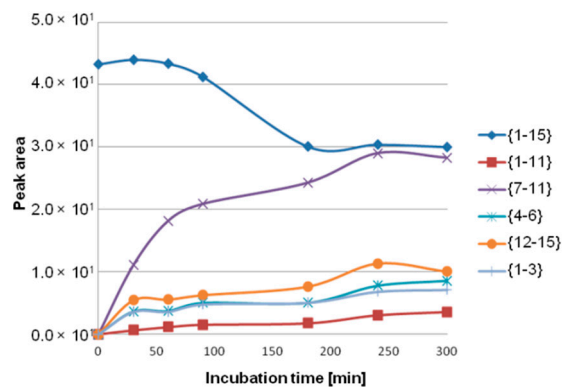
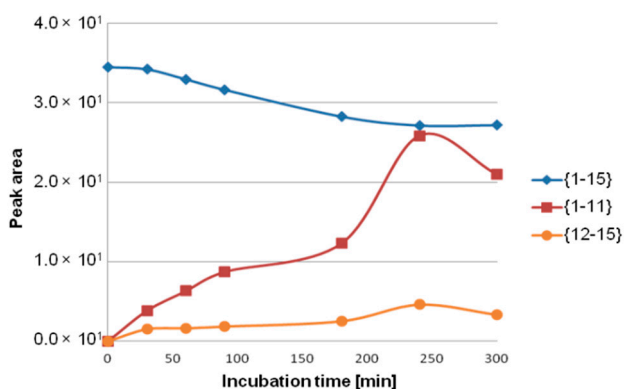


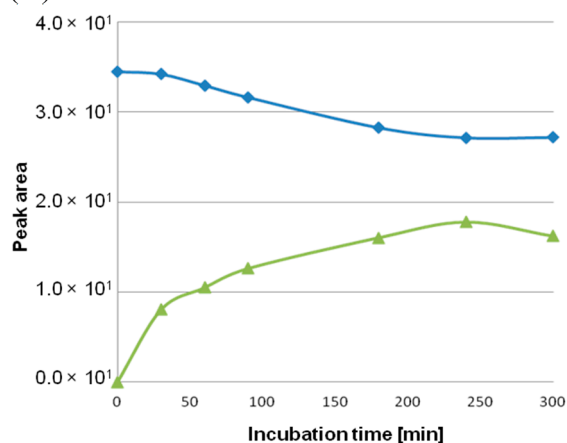
Supplementary Information

Figure S1. Time dependent data: **(A)** Time dependent incubation of NPNA with enzymes from fraction number 23. The main product is created in the highest amount after 4 h, fragment 1–11 [NAWGPWSKEQL]; **(B)** Time dependent incubation of NPNA with enzymes from fraction number 26. The main product is fragment 7–11 [SKEQL]; **(C)** Time dependent incubation of NPNA with enzymes from fraction number 35. The only identified product is fragment 4–15 [GPWSKEQLSPQA].

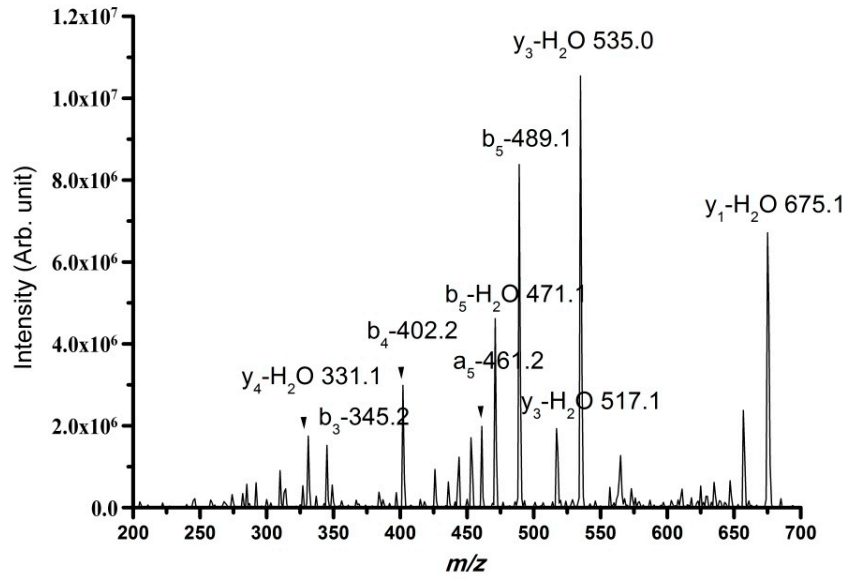


(A)

(B)



(C)

Figure S2. MS/MS spectrum for the peak at m/z 693.2, corresponding to peptide SAWGSW.**Figure S3.** MS/MS spectrum for the peak at m/z 1442.7, assigned to fragment WGPWSKEQLSPQ.