

Supporting Information

Pag 2 ¹H-NMR (300 MHz, CDCl₃) of compound (±)-1

Pag 3 ¹³C-NMR (75 MHz, CDCl₃) of compound (±)-1

Pag 4 HPLC chromatogram (Phenomenex, Lux 3U Amylose-2, 4.60 x 50 mm) of compound (±)-1

Pag 5 HPLC chromatogram (Phenomenex, Lux 3U Amylose-2, 4.60 x 50 mm) of compound (+)-1

Pag 6 ¹H-NMR (300 MHz, CDCl₃) of compound (±)-5

Pag 7 ¹³C-NMR (75 MHz, CDCl₃) of compound (±)-5

Pag 8 HPLC chromatogram (Phenomenex Lux 3U Cellulose-4 4.60 x 50 mm) of compound (±)-5

Pag 9 HPLC chromatogram (Phenomenex Lux 3U Cellulose-4 4.60 x 50 mm) of compound (+)-5

Pag 10 ¹H-NMR (400 MHz, CDCl₃) of compound (±)-6

Pag 11 ¹³C-NMR (100 MHz, CDCl₃) of compound (±)-6

Pag 12 HPLC chromatogram (Phenomenex Lux 3U Cellulose-4 4.60 x 150 mm) of compound (±)-6

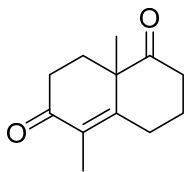
Pag 13 HPLC chromatogram (Phenomenex Lux 3U Cellulose-4 4.60 x 150 mm) of compound (±)-6

Pag 14 ¹H-NMR (400 MHz, C₆D₆) of compound (±)-7

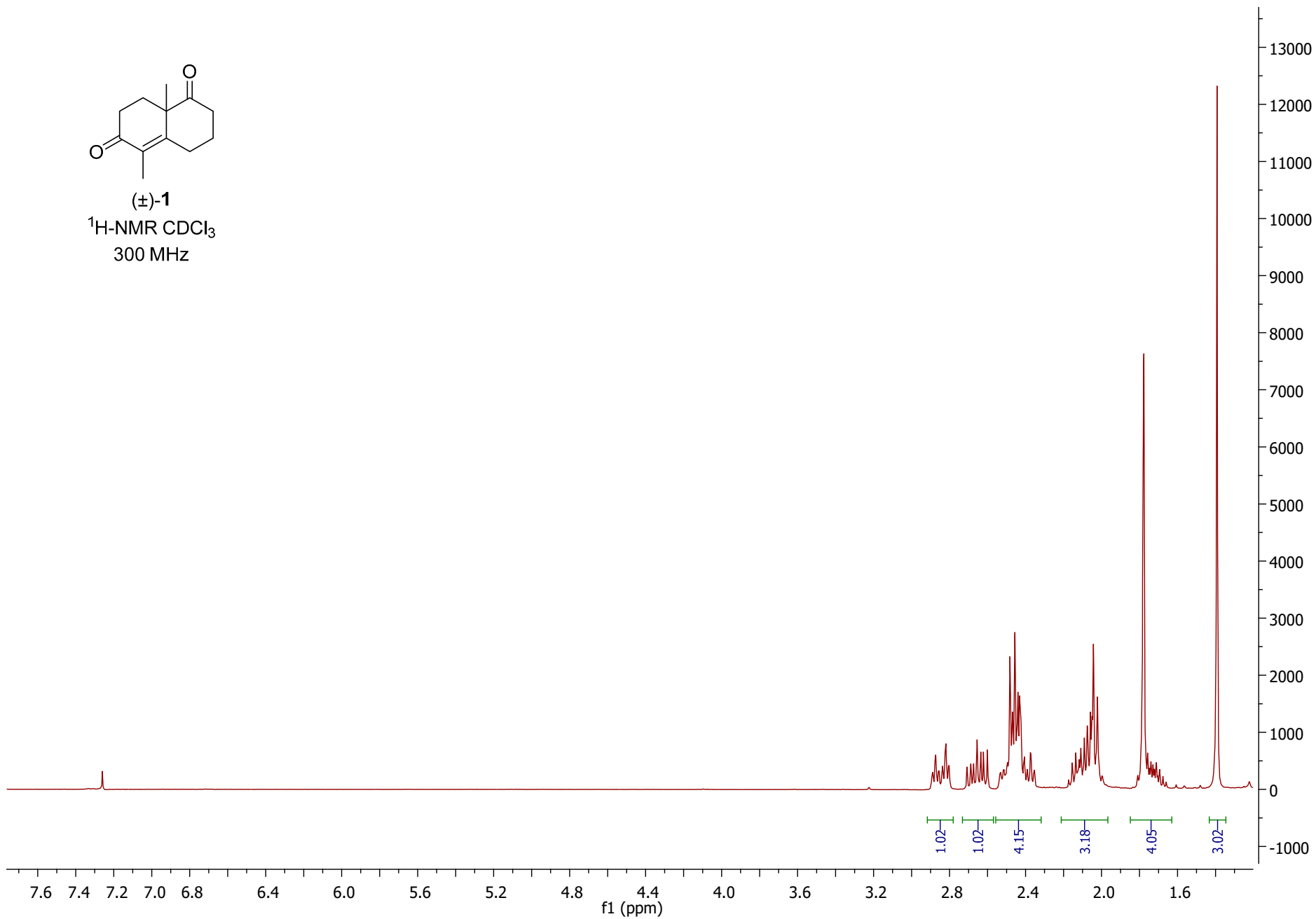
Pag 15 ¹³C-NMR (100 MHz, C₆D₆) of compound (±)-7

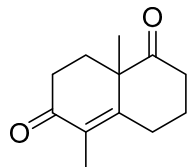
Pag 16 HPLC chromatogram (Phenomenex Lux 3U Cellulose-4 4.60 x 150 mm) of compound (±)-7

Pag 17 HPLC chromatogram (Phenomenex Lux 3U Cellulose-4 4.60 x 150 mm) of compound (+)-7



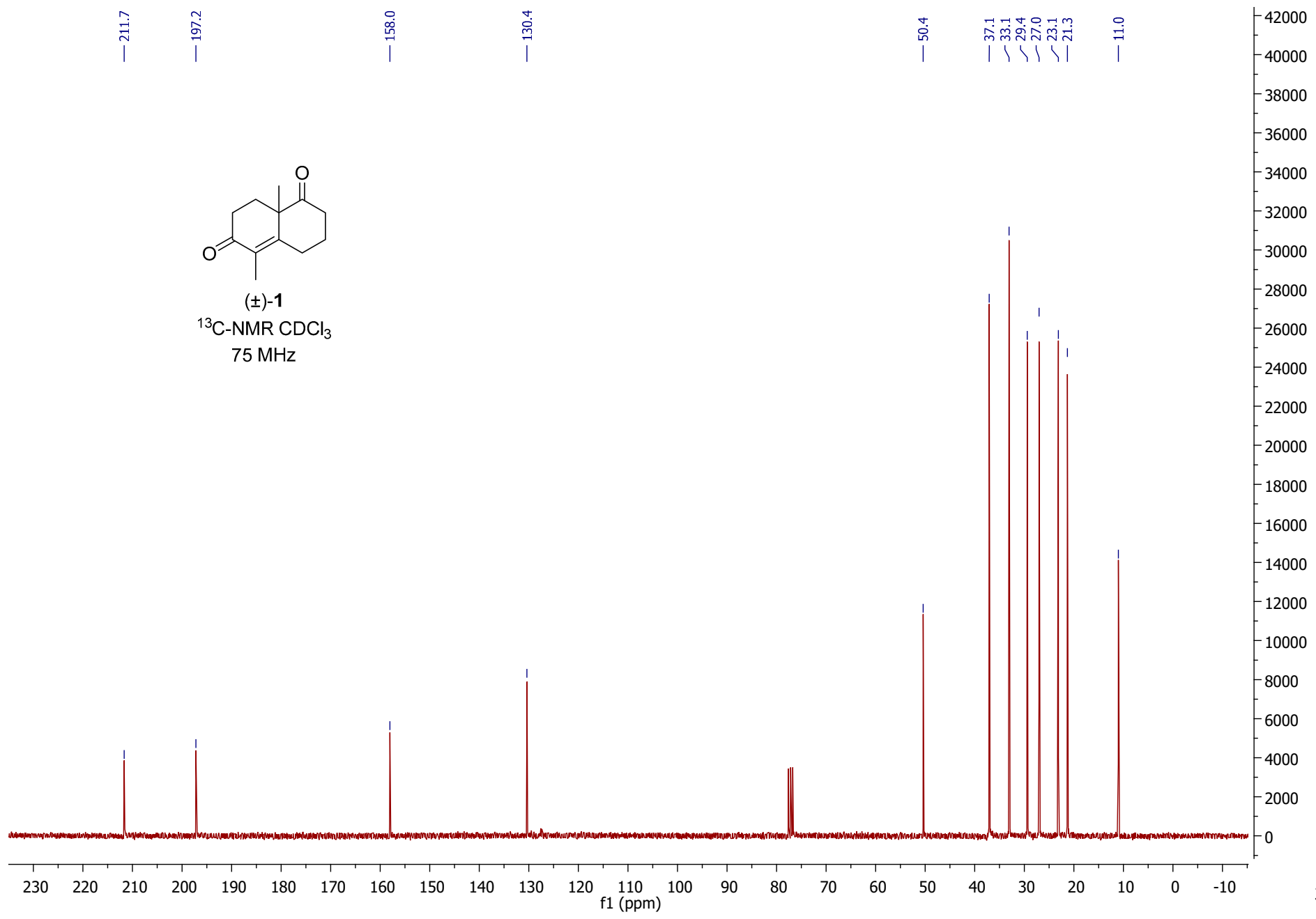
(±)-**1**
¹H-NMR CDCl₃
300 MHz



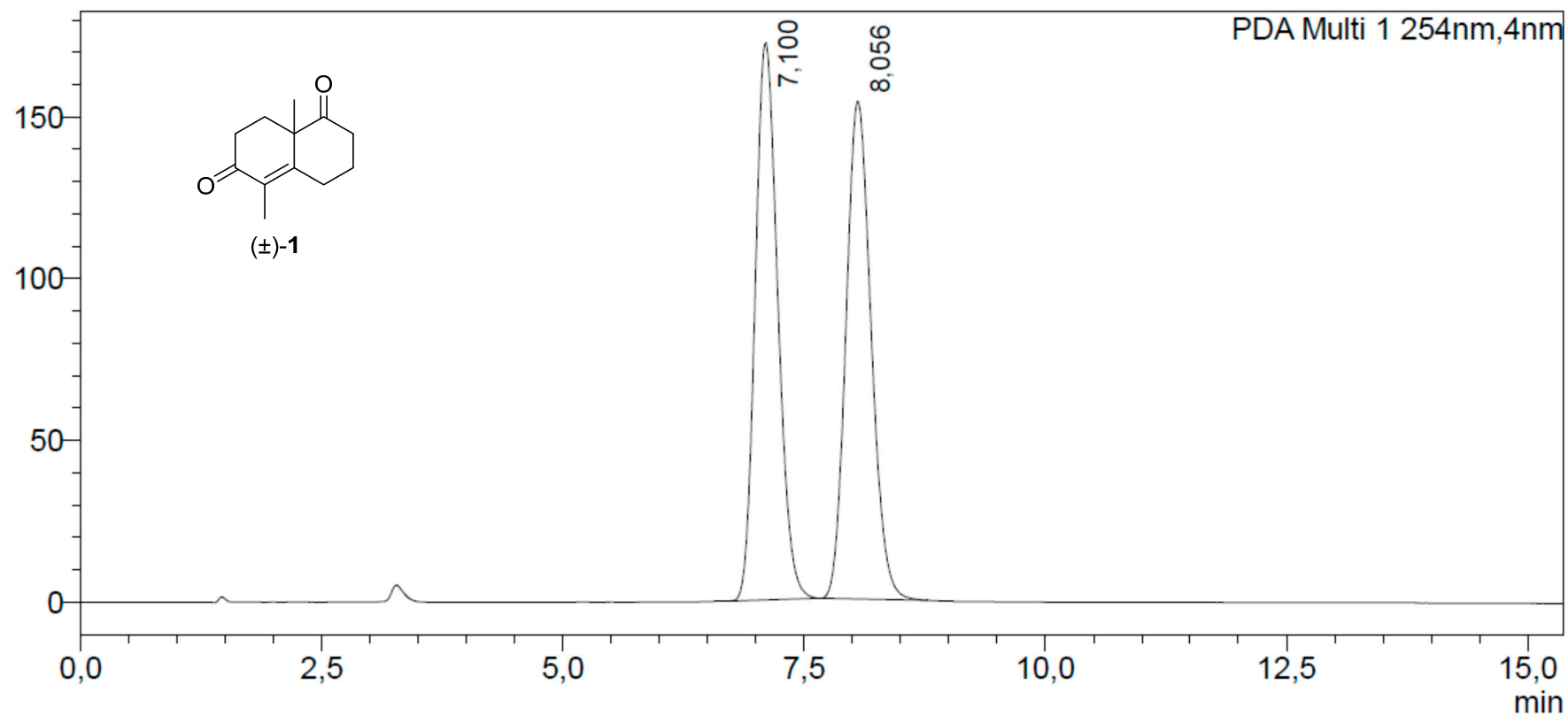


(±)-**1**

¹³C-NMR CDCl₃
75 MHz



mAU

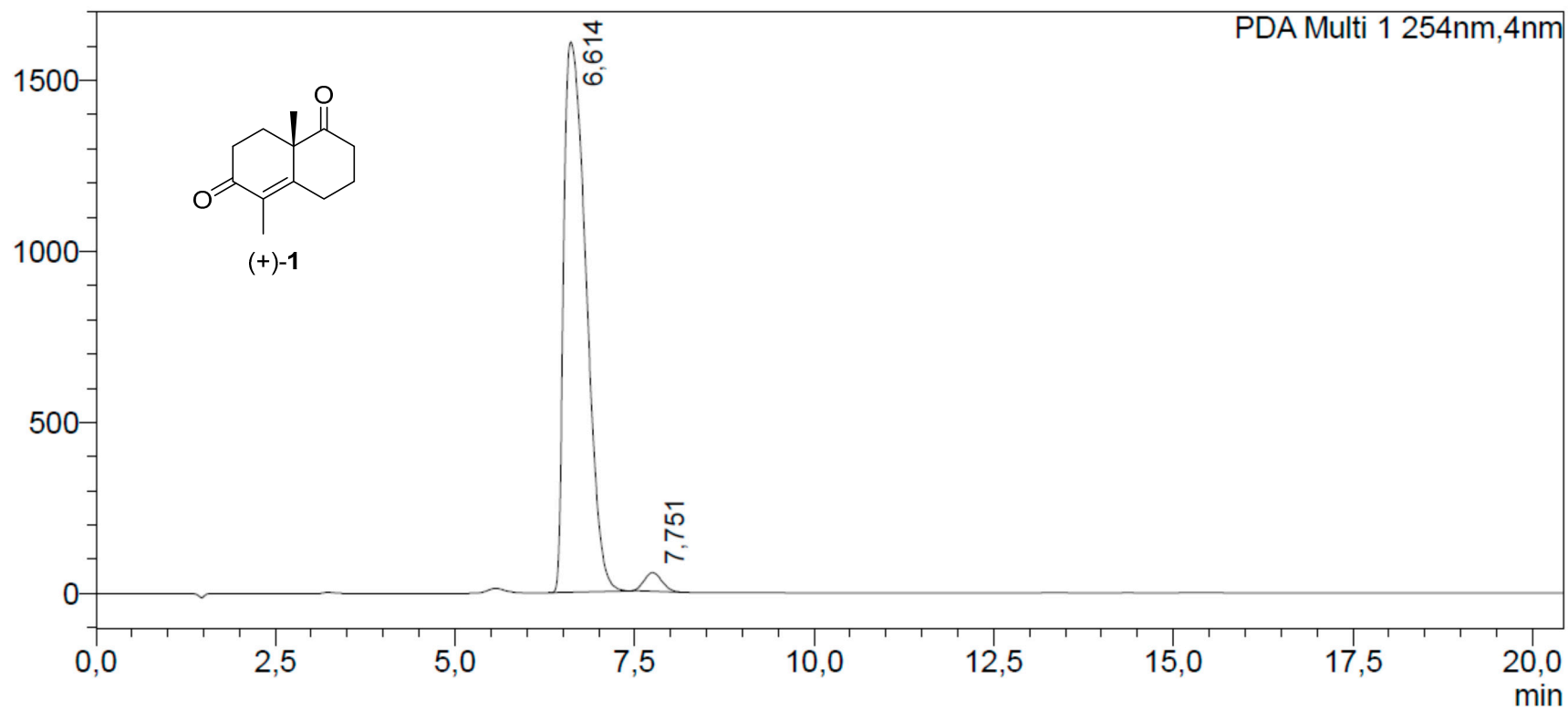


Column: Phenomenex, Lux 3U Amylose-2, 4.60 x 50 mm;

Flow rate: 0.5 mL/min

Eluent: isopropyl alcohol/*n*-hexane 1:9

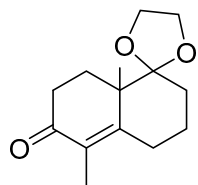
mAU



Column: Phenomenex, Lux 3U Amylose-2, 4.60 x 50 mm;

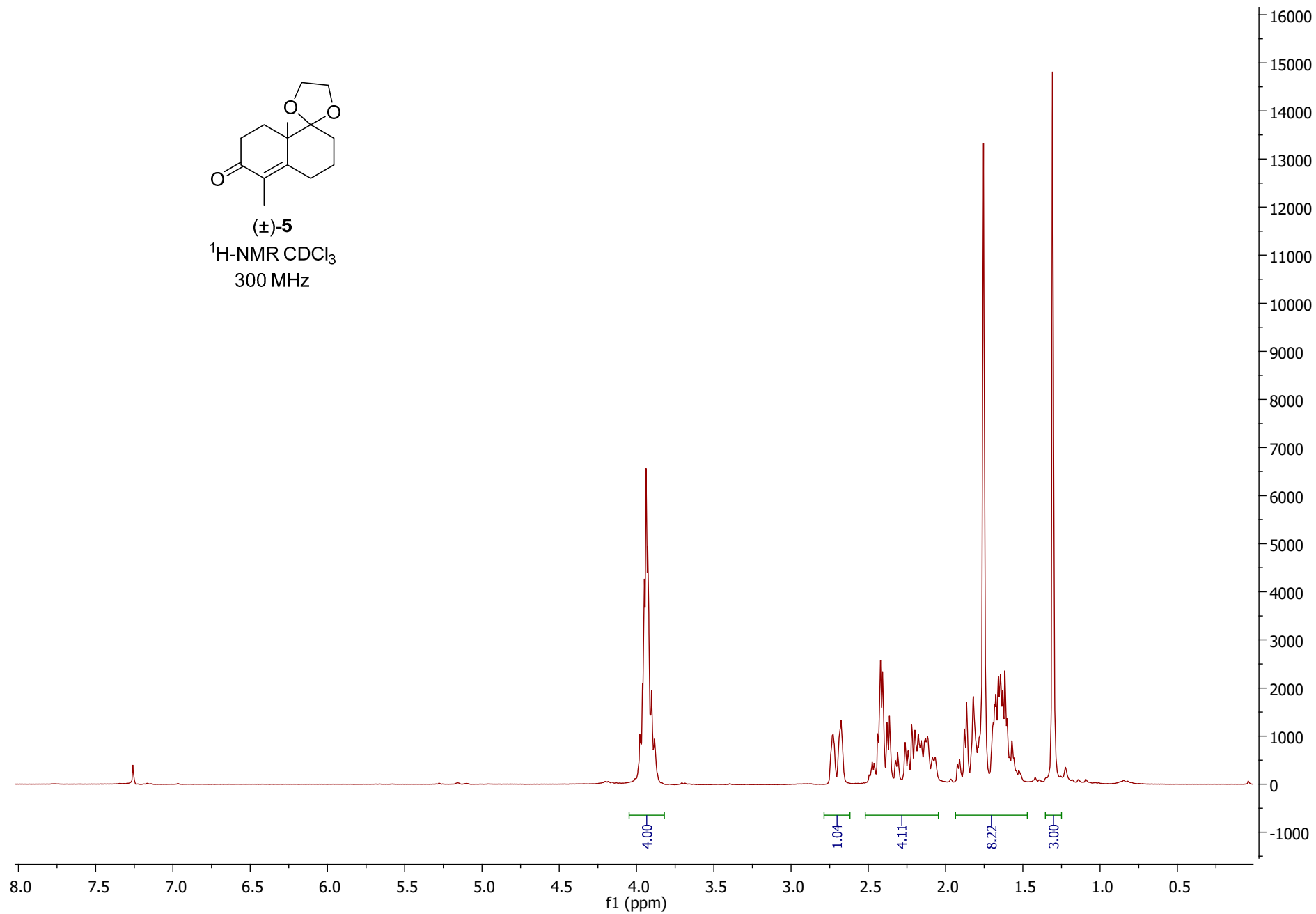
Flow rate: 0.5 mL/min

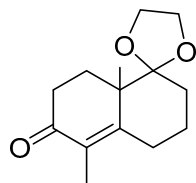
Eluent: isopropyl alcohol/*n*-hexane 1:9



(±)-**5**

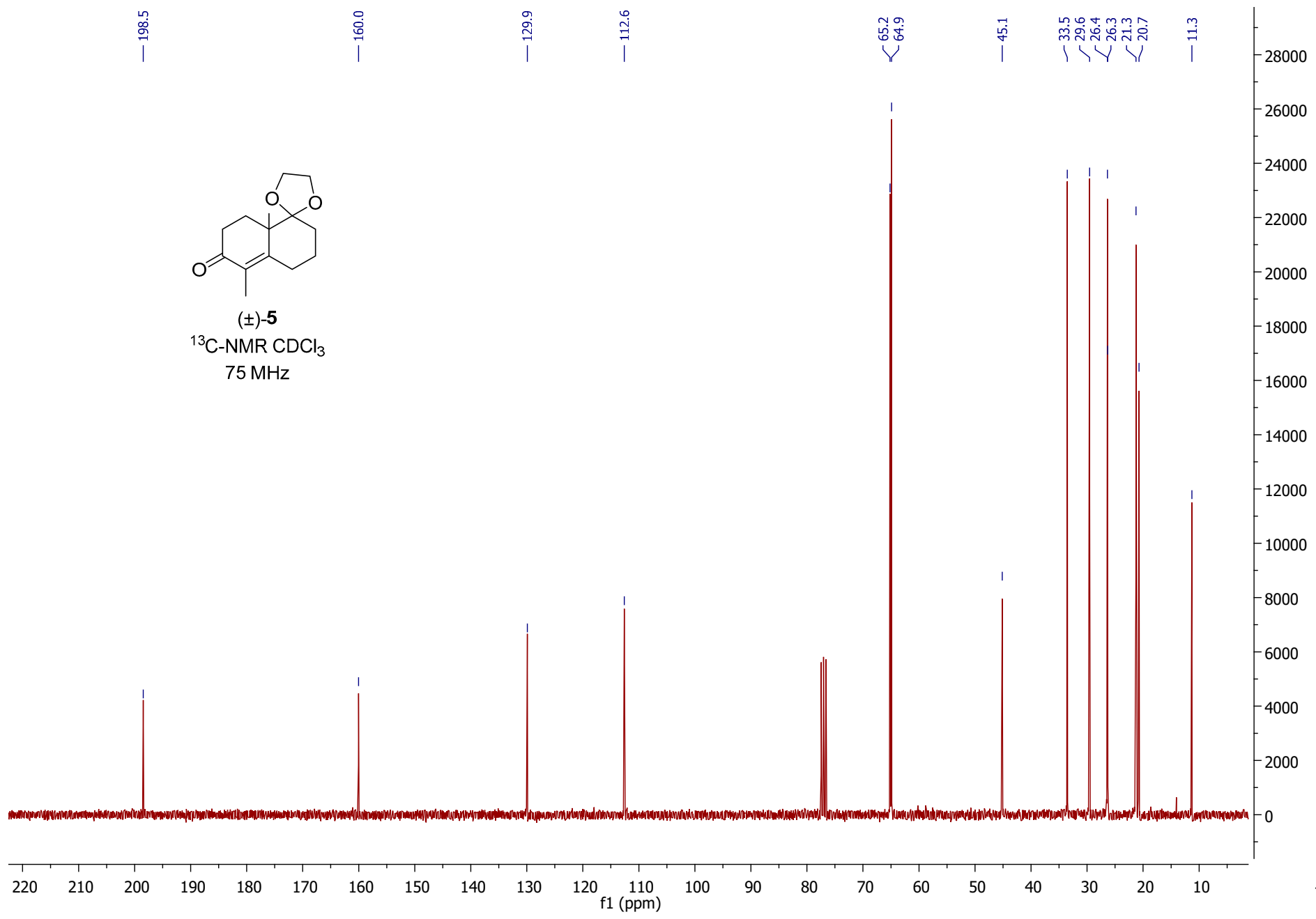
¹H-NMR CDCl₃
300 MHz



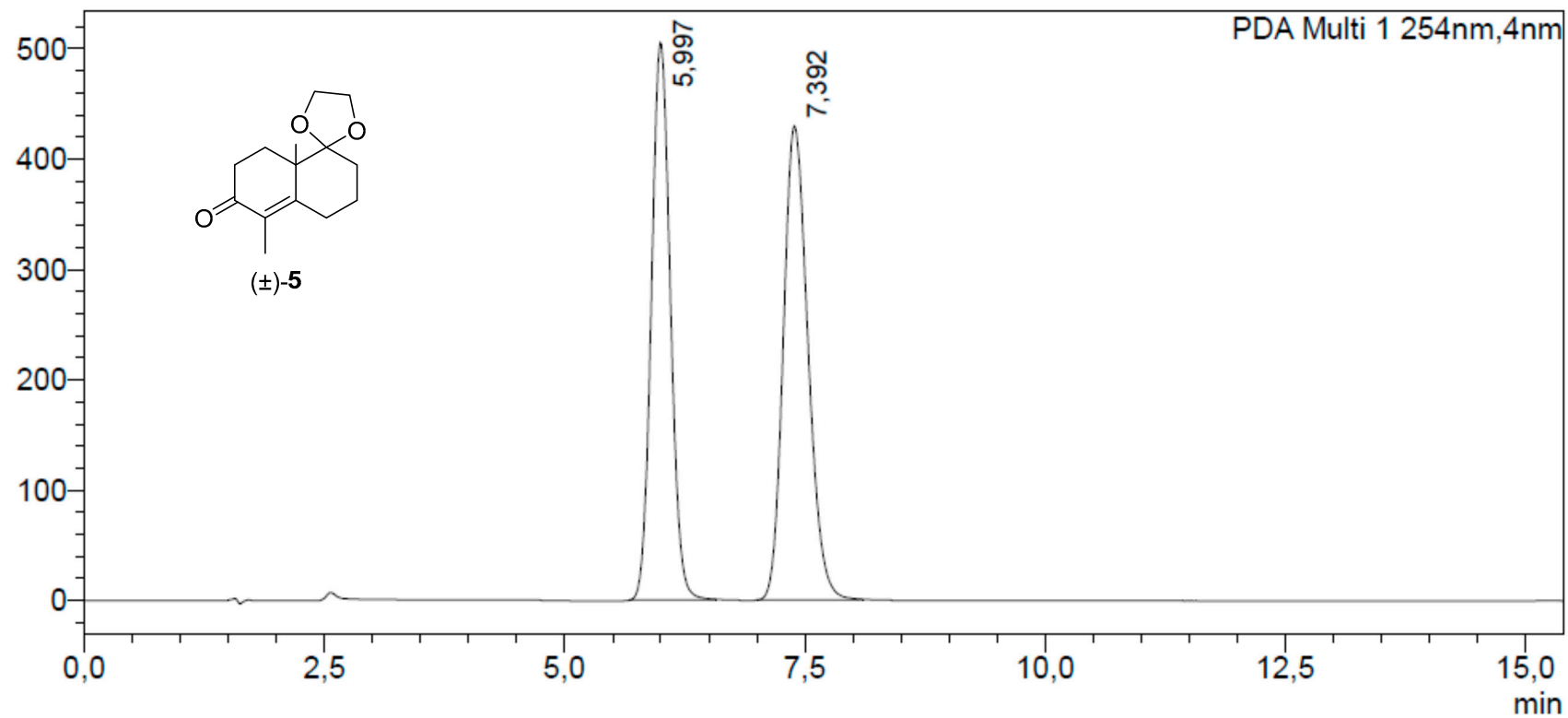


(±)-5

¹³C-NMR CDCl₃
75 MHz



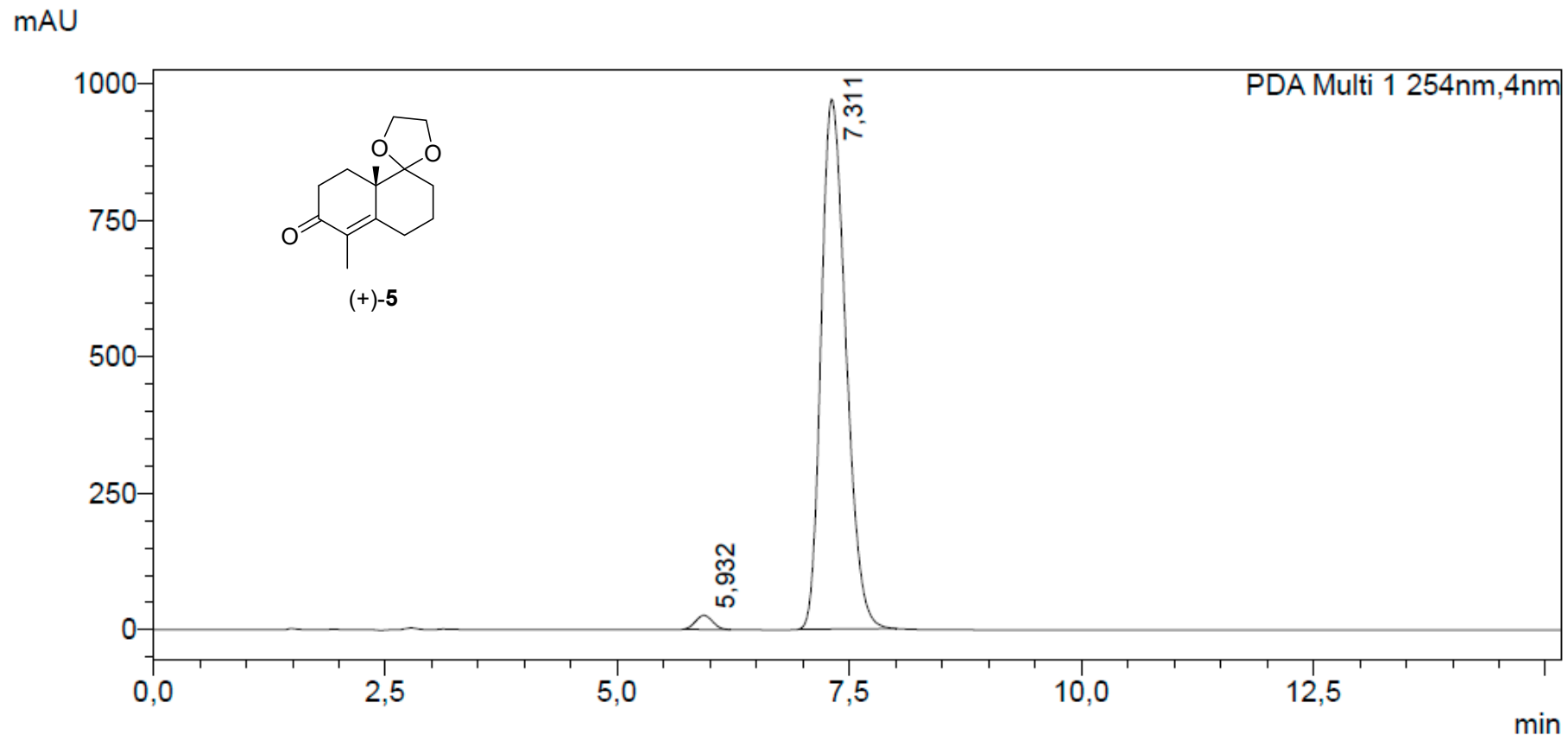
mAU



Column: Phenomenex Lux 3U Cellulose-4 4.60 x 50 mm;

Flow rate: 0.5 mL/min

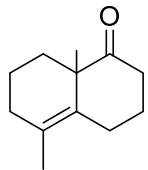
Eluent: isopropyl alcohol/*n*-hexane 1:9



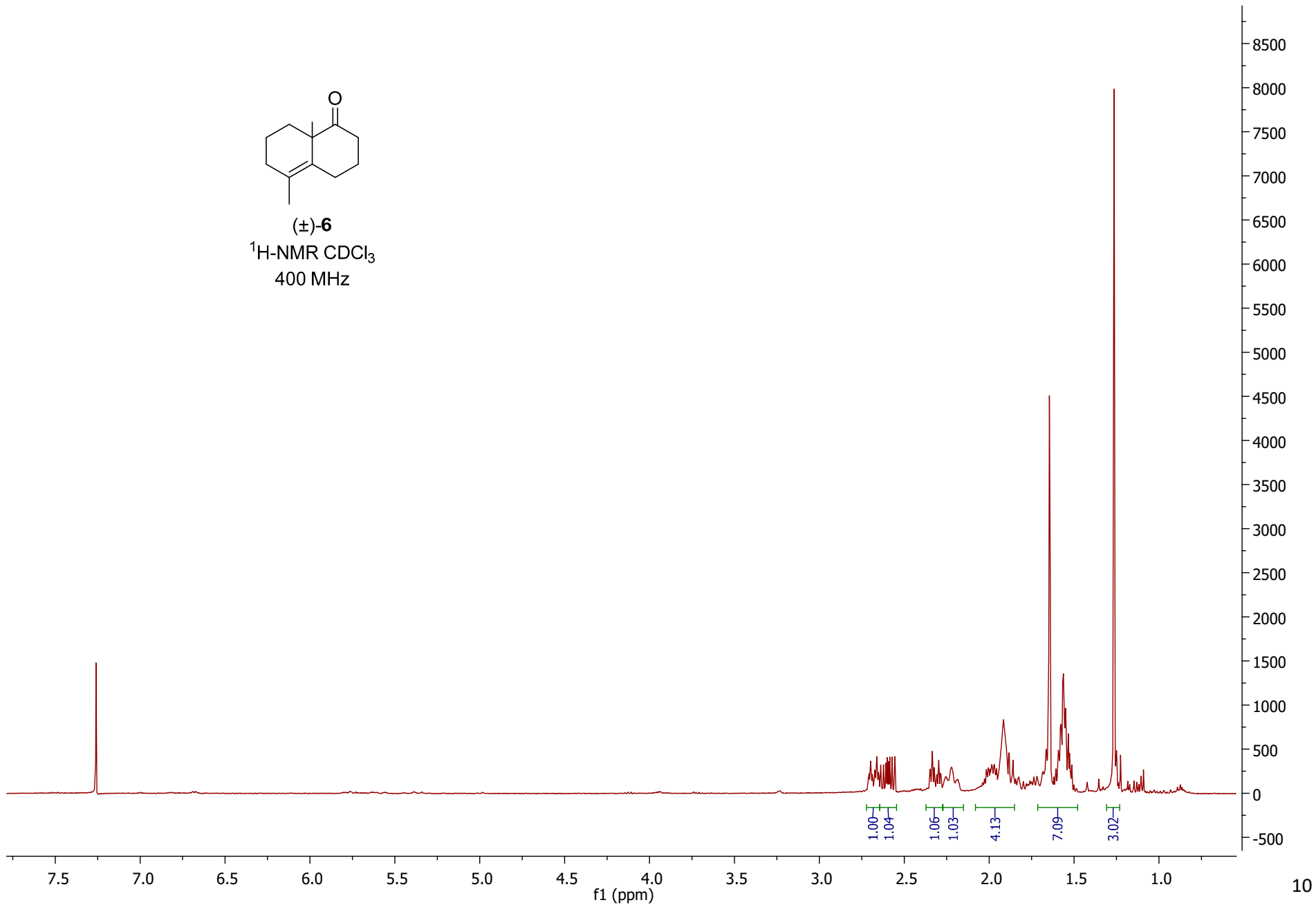
Column: Phenomenex Lux 3U Cellulose-4 4.60 x 50 mm;

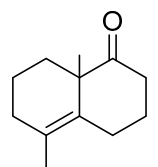
Flow rate: 0.5 mL/min

Eluent: isopropyl alcohol/*n*-hexane 1:9



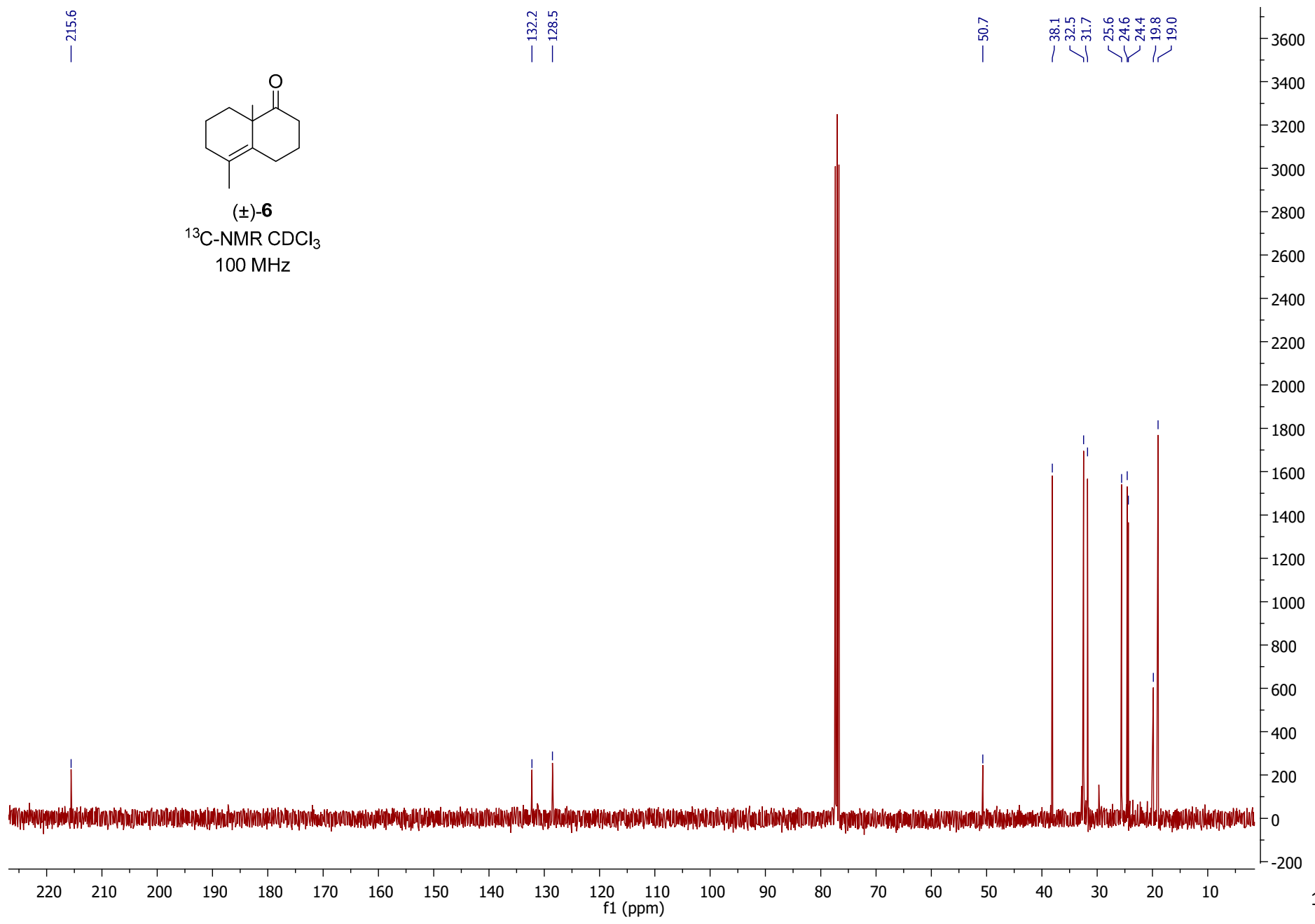
(±)-**6**
¹H-NMR CDCl₃
400 MHz



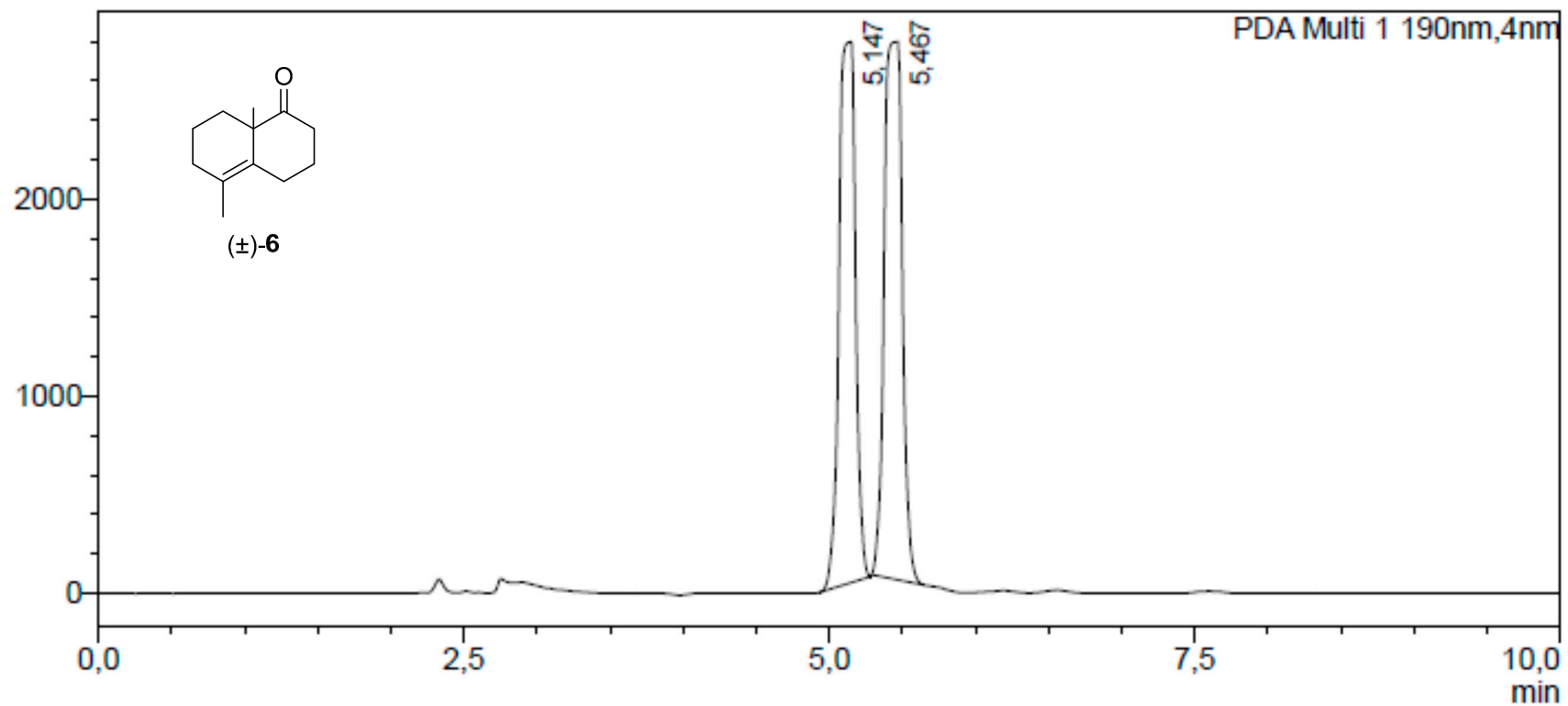


(±)-**6**

¹³C-NMR CDCl₃
100 MHz



mAU

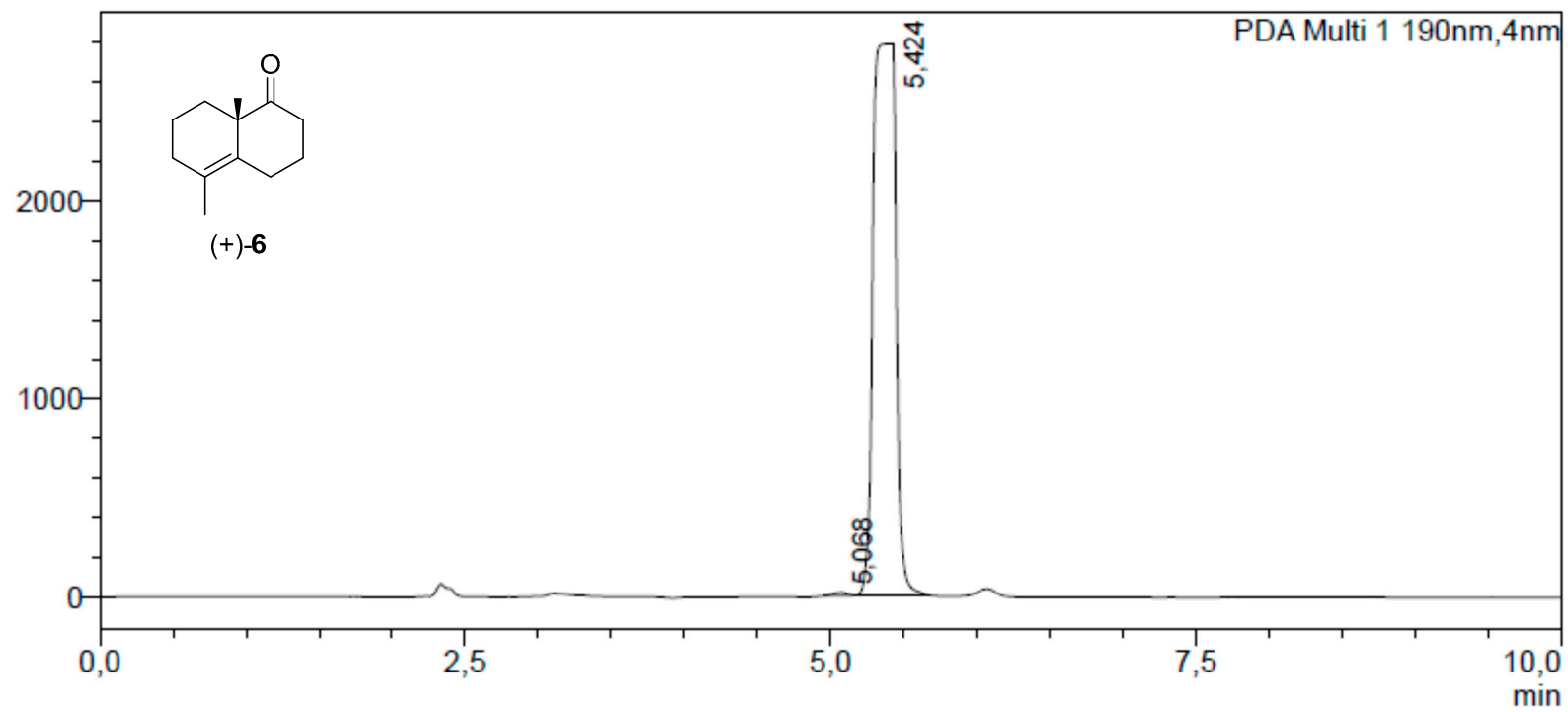


Column: Phenomenex Lux 3U Cellulose-4 4.60 x 150 mm;

Flow rate: 0.8 mL/min

Eluent: isopropyl alcohol/*n*-hexane 1:99

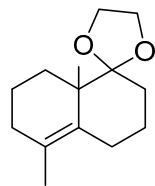
mAU



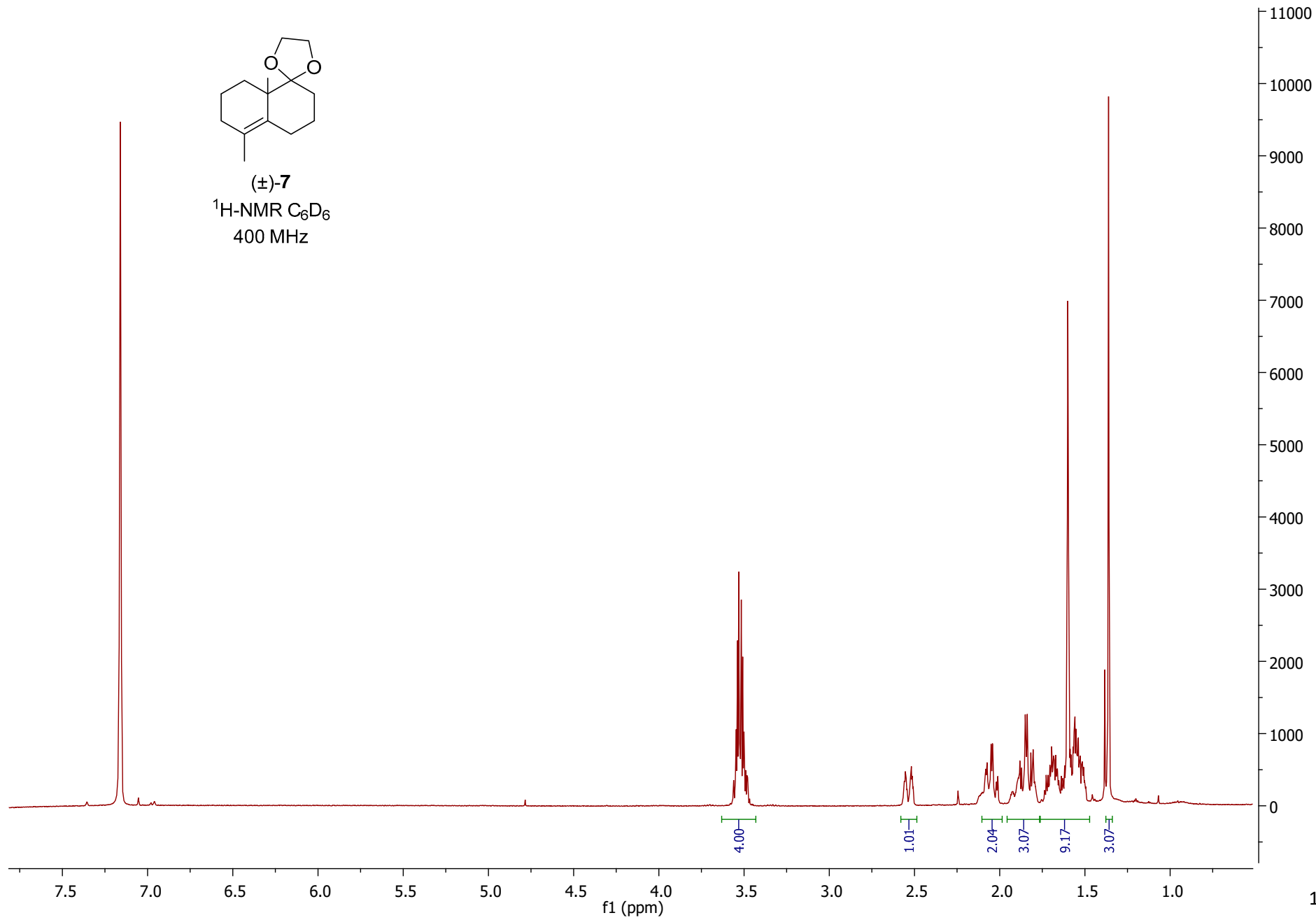
Column: Phenomenex Lux 3U Cellulose-4 4.60 x 150 mm;

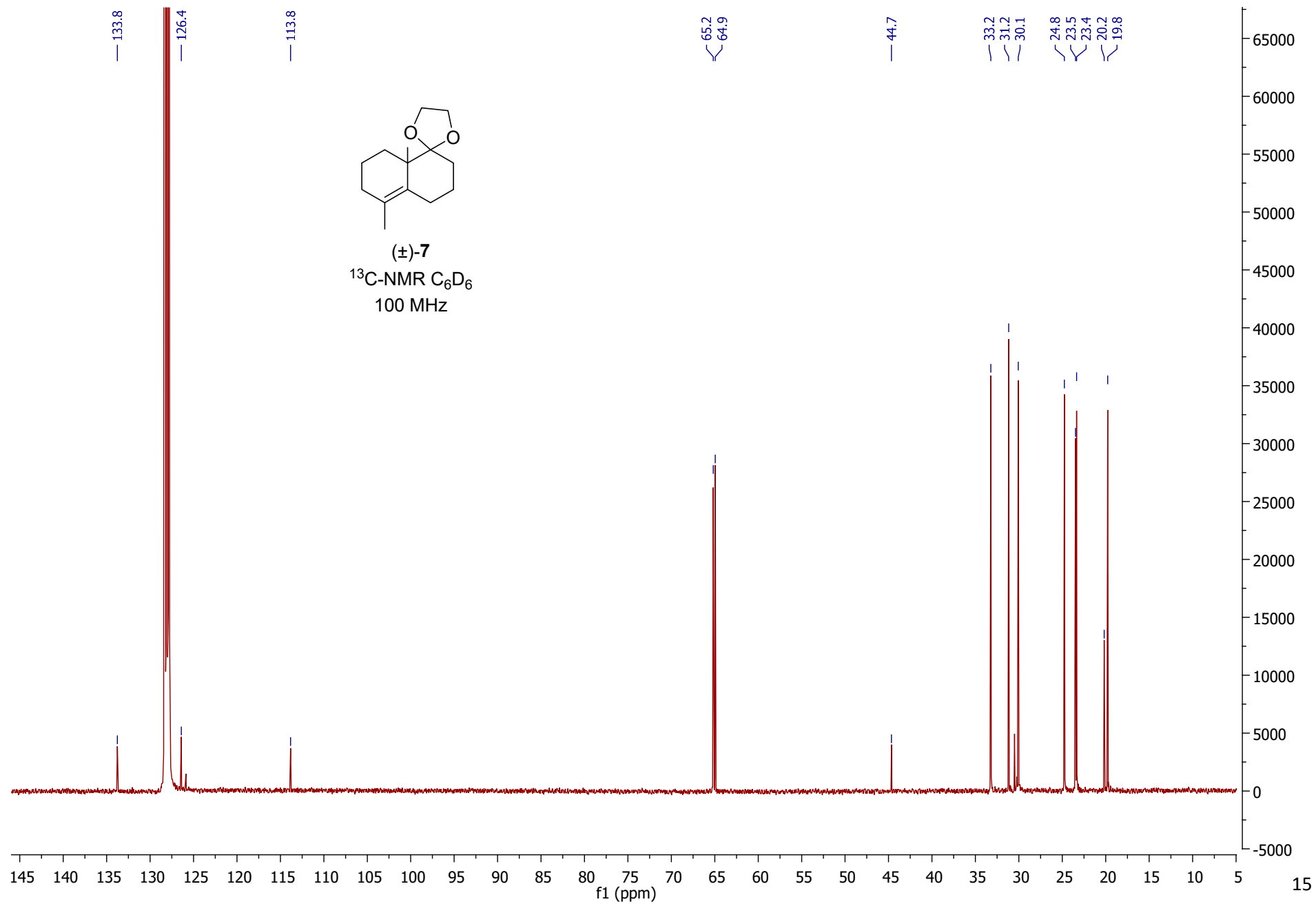
Flow rate: 0.8 mL/min

Eluent: isopropyl alcohol/*n*-hexane 1:99

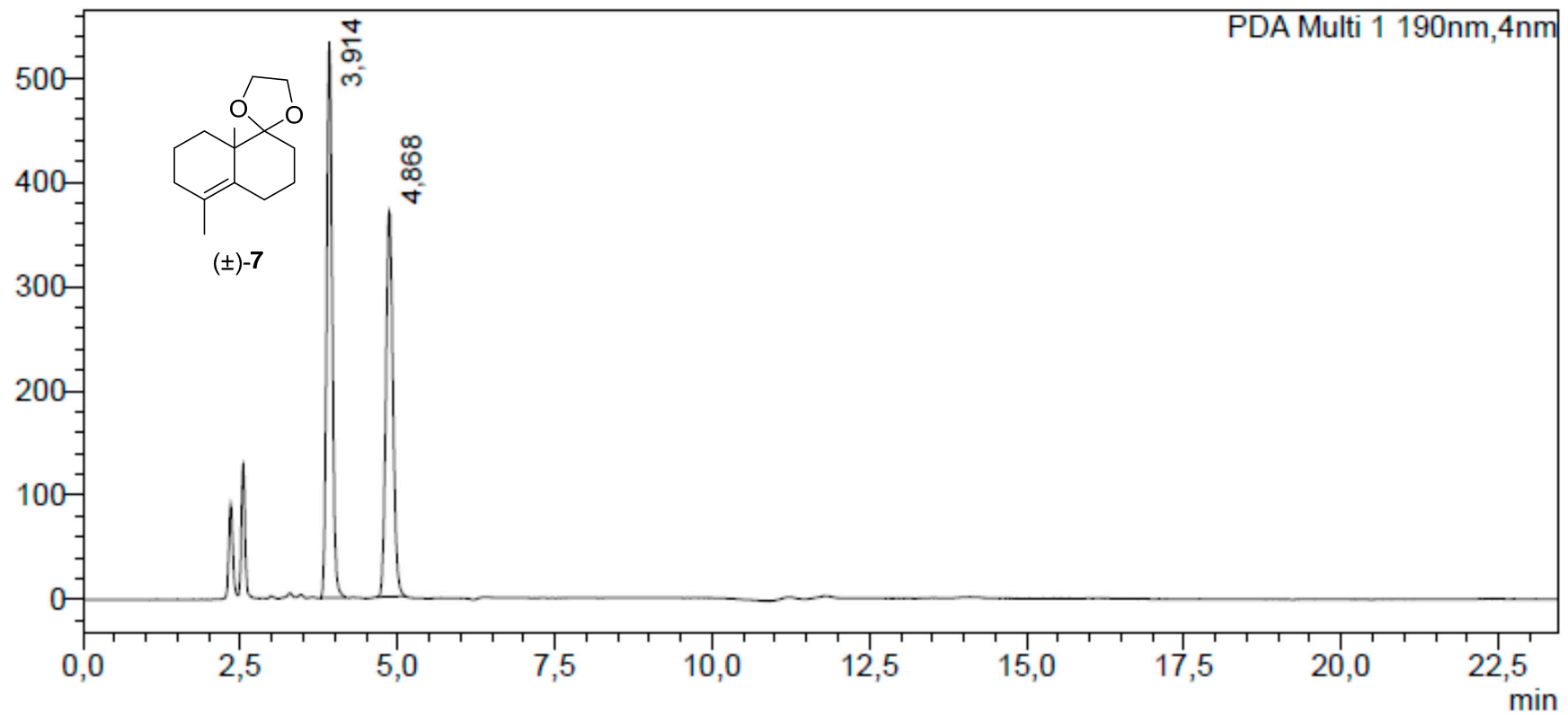


(±)-7
¹H-NMR C₆D₆
400 MHz





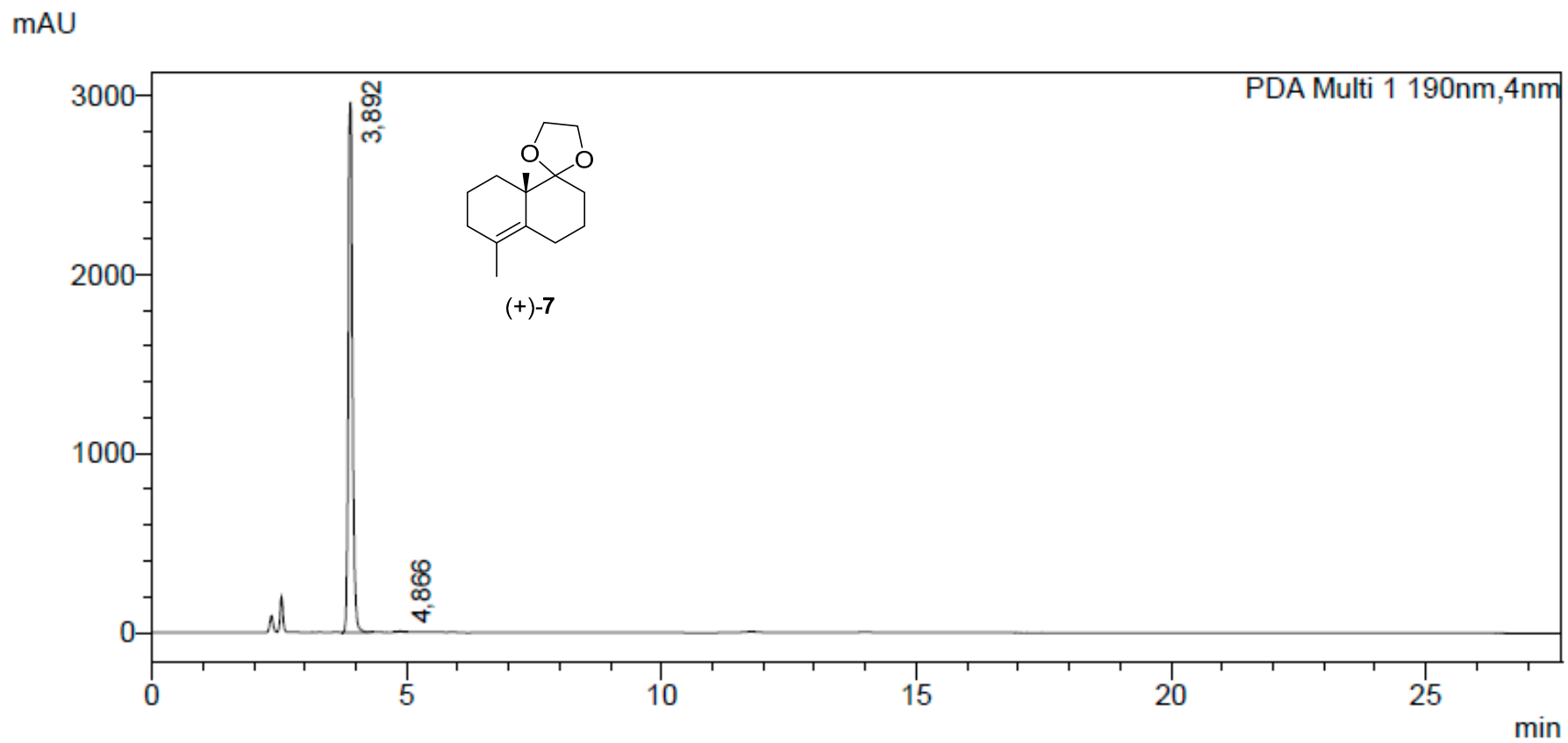
mAU



Column: Phenomenex Lux 3U Cellulose-4 4.60 x 150 mm;

Flow rate: 0.8 mL/min

Eluent: *n*-hexane



Column: Phenomenex Lux 3U Cellulose-4 4.60 x 150 mm;

Flow rate: 0.8 mL/min

Eluent: *n*-hexane