



Supplementary Materials for

Mass Spectrometry-Based Solid Phase Peptide Reaction Assay for Detecting Allergenicity Using an Immobilized Peptide-Conjugating Photo-Cleavable Linker

Hiroshi Miyazaki ¹, Yasutaka Samejima ², Kazuya Iwata ², Yuuki Minamino ², Shinya Hikida ², Hideto Ariumi ³, Hidefumi Ikeda ⁴, Yoshio Hamada ², Kunihiko Yamashita ^{1,*} and Kenji Usui ^{2,*}

¹ Medical Device Division, Innovation and Business Development Headquarters, Daicel Corporation, Minato-ku, Tokyo 108-8230, Japan; hs_miyazaki@jp.daicel.com

² Faculty of Frontiers of Innovative Research in Science and Technology (FIRST), Konan University, Chuo-ku, Kobe 650-0047, Japan; s1691021@s.konan-u.ac.jp (Y.S.); s1791005@s.konan-u.ac.jp (K.I.); nan1bbmst@yahoo.co.jp (Y.M.); hshinya513@gmail.com (S.H.); pynden@gmail.com (Y.H.)

³ Faculty of Pharmaceutical Sciences, Sanyo-Onoda City University, Sanyo-Onoda, Yamaguchi 756-0884, Japan; ariumih@rs.socu.ac.jp

⁴ Product Assurance Division, Mandom Corporation, Chuo-ku, Osaka 540-8530, Japan; hidefumi.ikeda@mandom.com

* Correspondence: ku_yamashita@jp.daicel.com (K.Y.); kusui@konan-u.ac.jp (K.U.); Tel.: +81-6-6210-8449 (K.Y.); +81-78-303-1418(K.U.)

Table of Contents

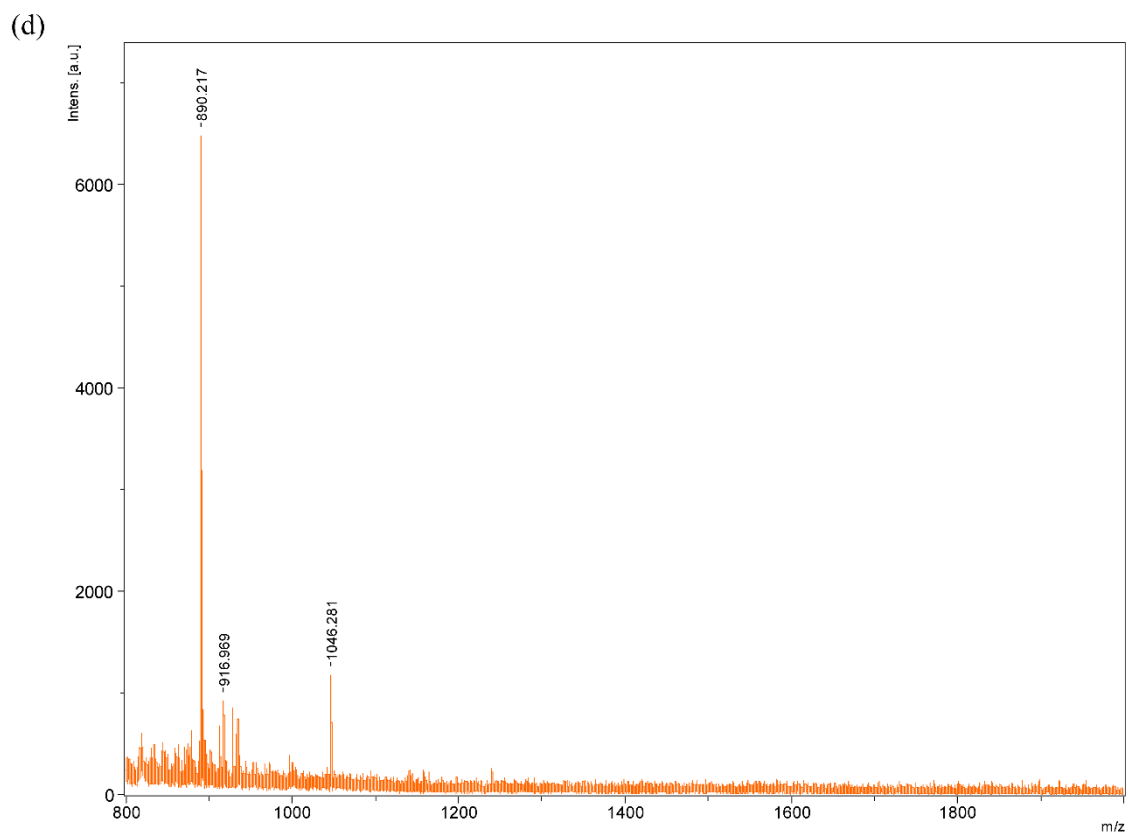
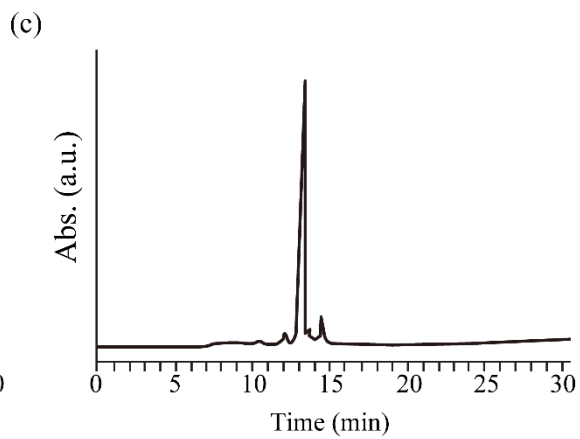
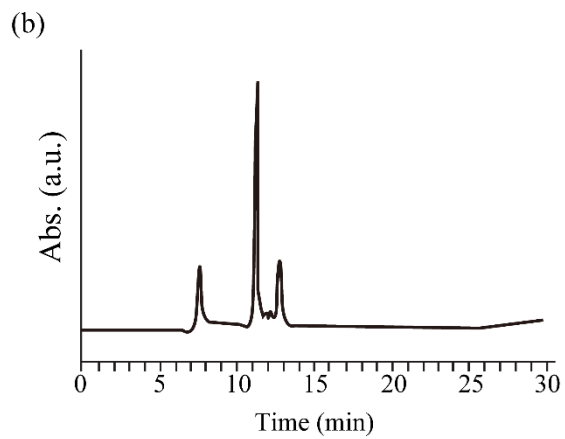
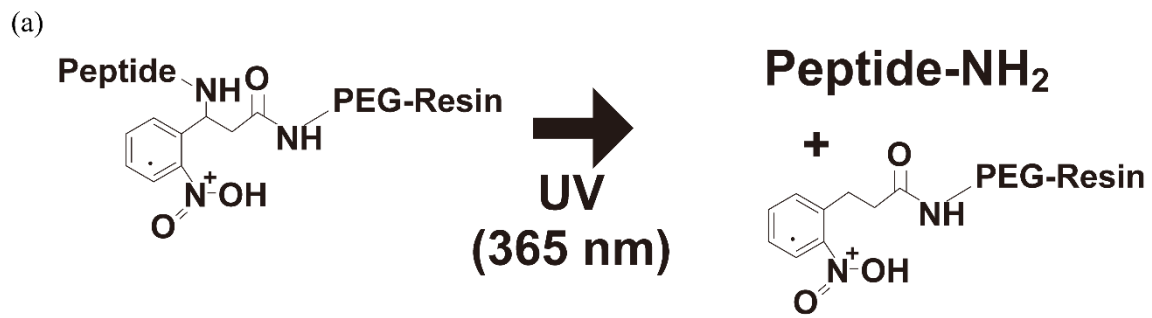
Page 1: Contents

Pages 2-3: Figure S1 for scheme of the photo cleavage and, HPLC chart and mass spectra of peptide-npp resins.

Page 4: Figure S2 for mass spectrum after the 100 mM FITC assay using Lys-peptide-npp resin.

Pages 5-7: Figure S3 for mass spectra of diluted cleavage solution after the 100 mM FITC reaction using Lys-peptide-npp resin.

Page 8: Figure S4 for mass spectrum after the reaction with 50 mL of 25 μ M FITC using Lys-peptide-npp resin.



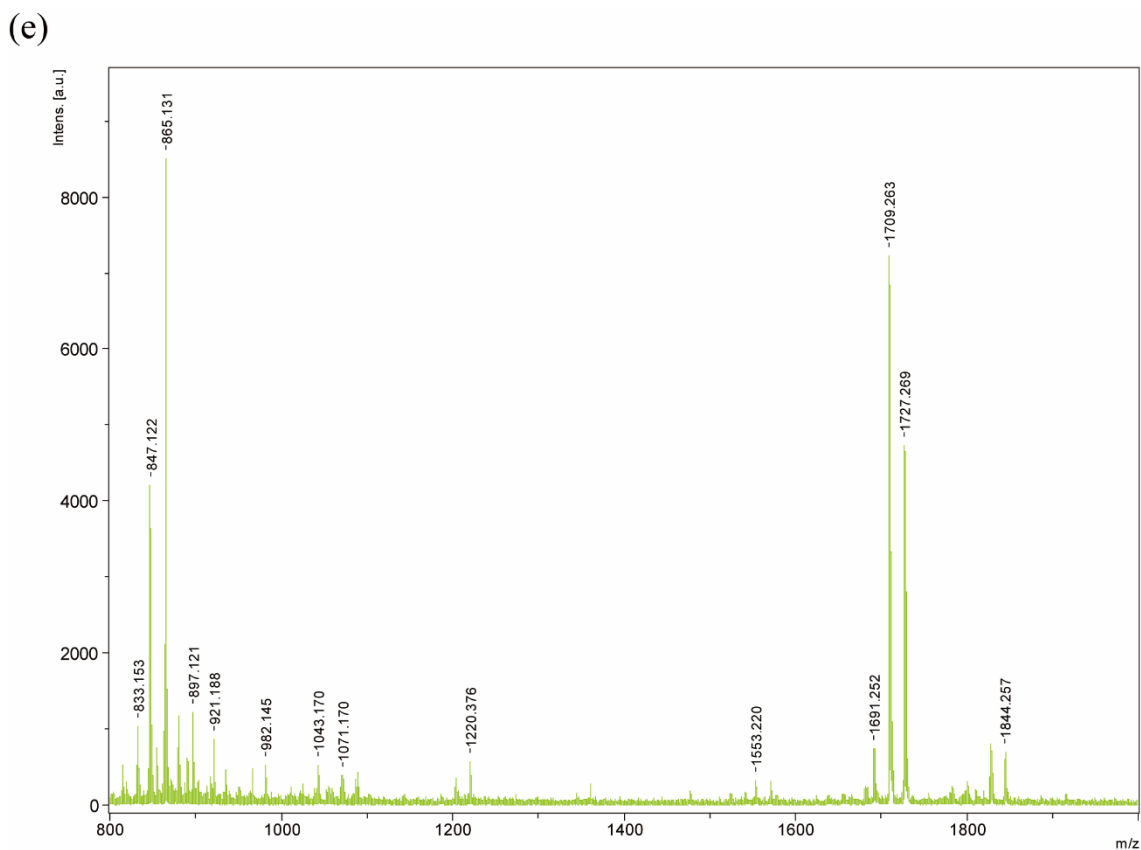


Figure S1 (a) Scheme of the photo cleavage in this study. (b) HPLC chromatographs of the cleaved peptide from the Lys-peptide-npp resin. (c) HPLC chromatographs of the cleaved peptide from the Cys-peptide-npp resin. (d) Mass spectrum after the cleavage of the peptide from Lys-peptide-npp resin. (e) Mass spectrum after the cleavage of the peptide from Cys-peptide-npp resin. The HPLC was performed using an Inertsil ODS-3 column. The eluate was monitored at 220 nm.

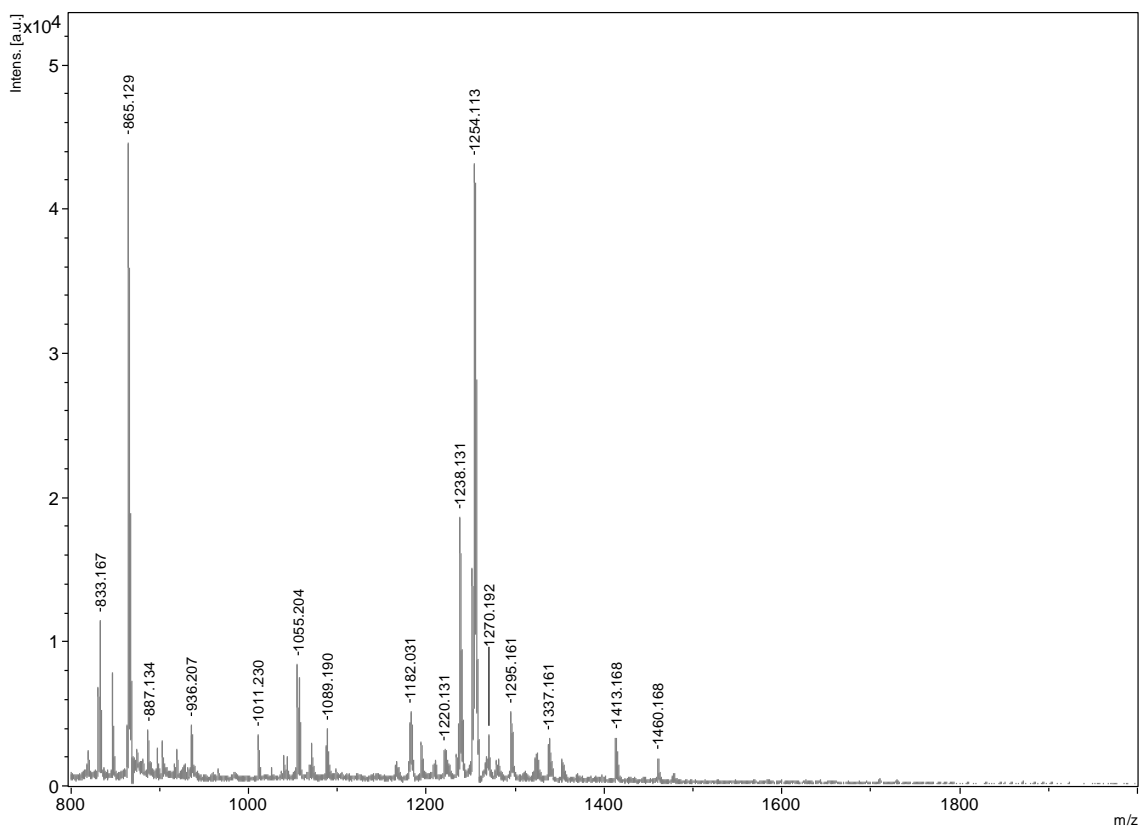
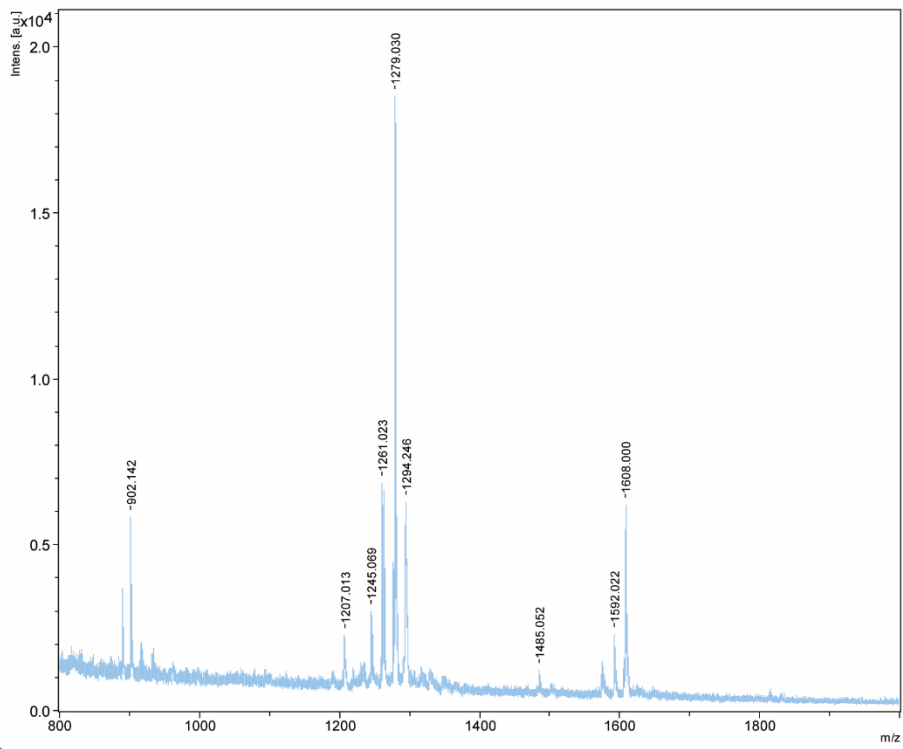
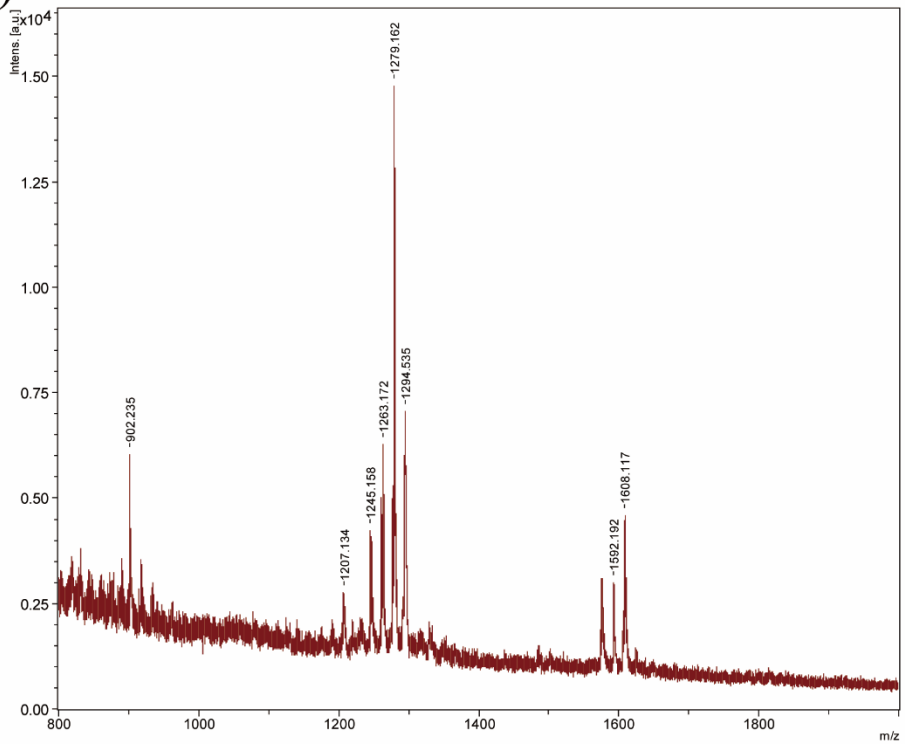


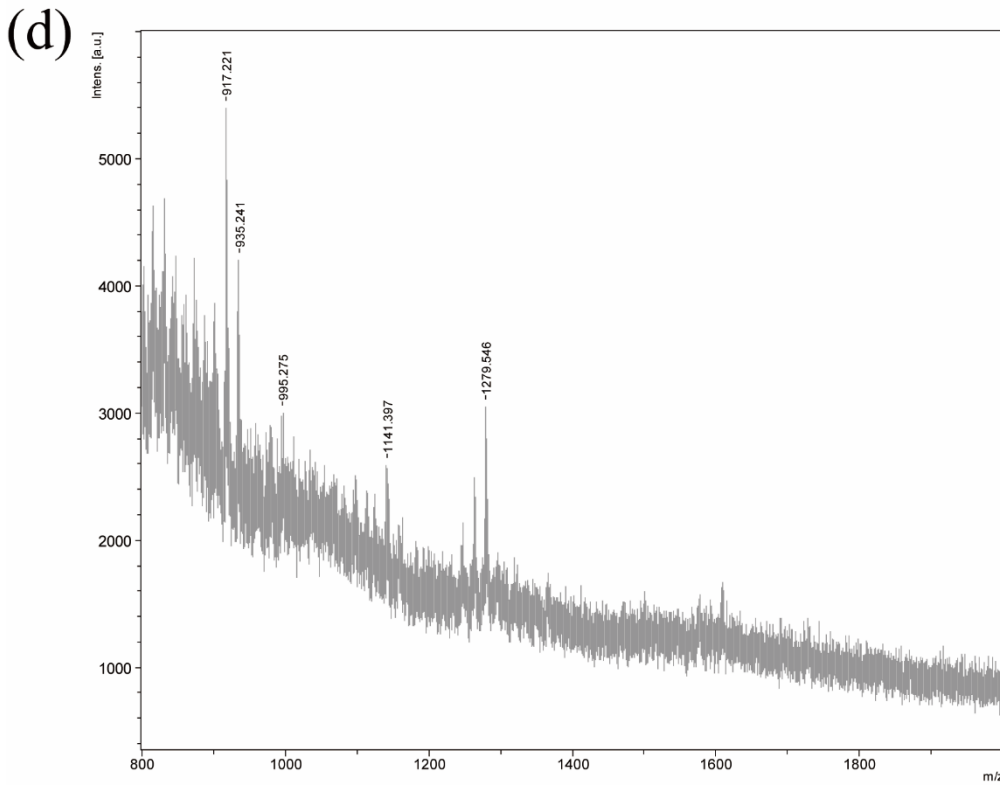
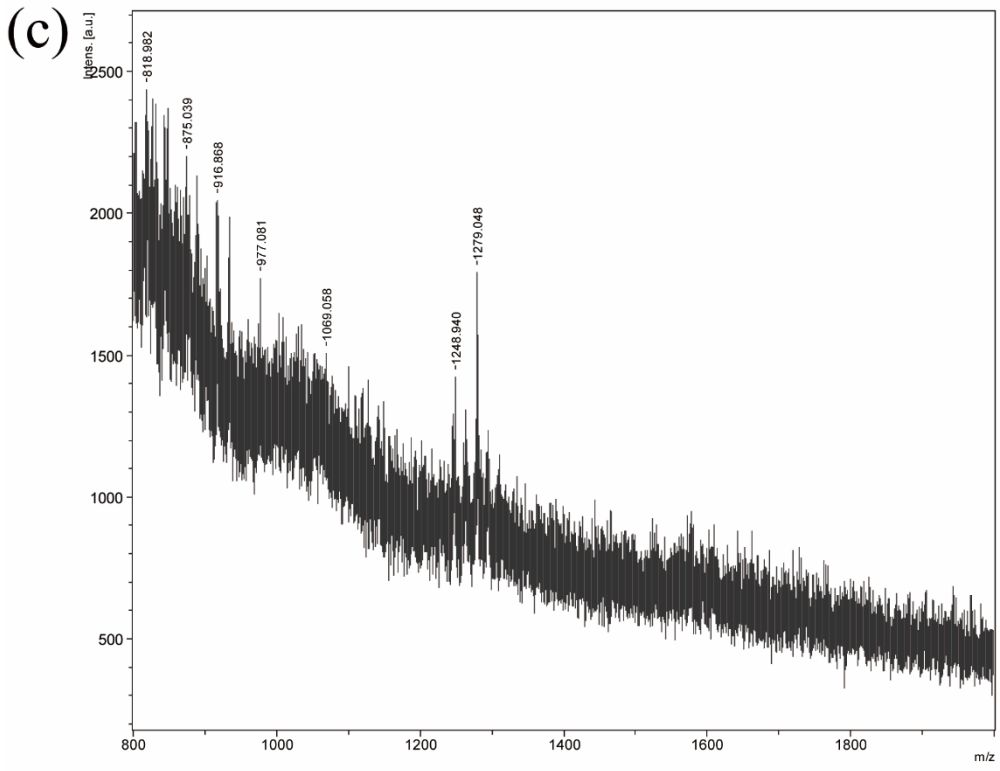
Figure S2. Mass spectrum after the 100 mM FITC assay using Lys-peptide-npp resin.

(a)



(b)





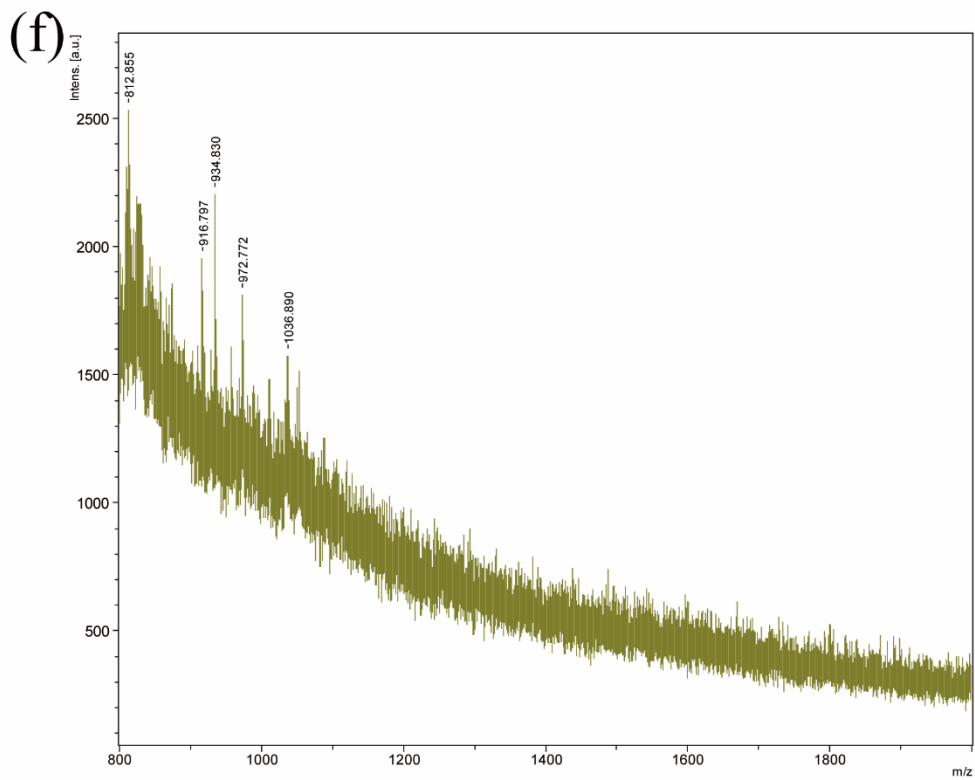
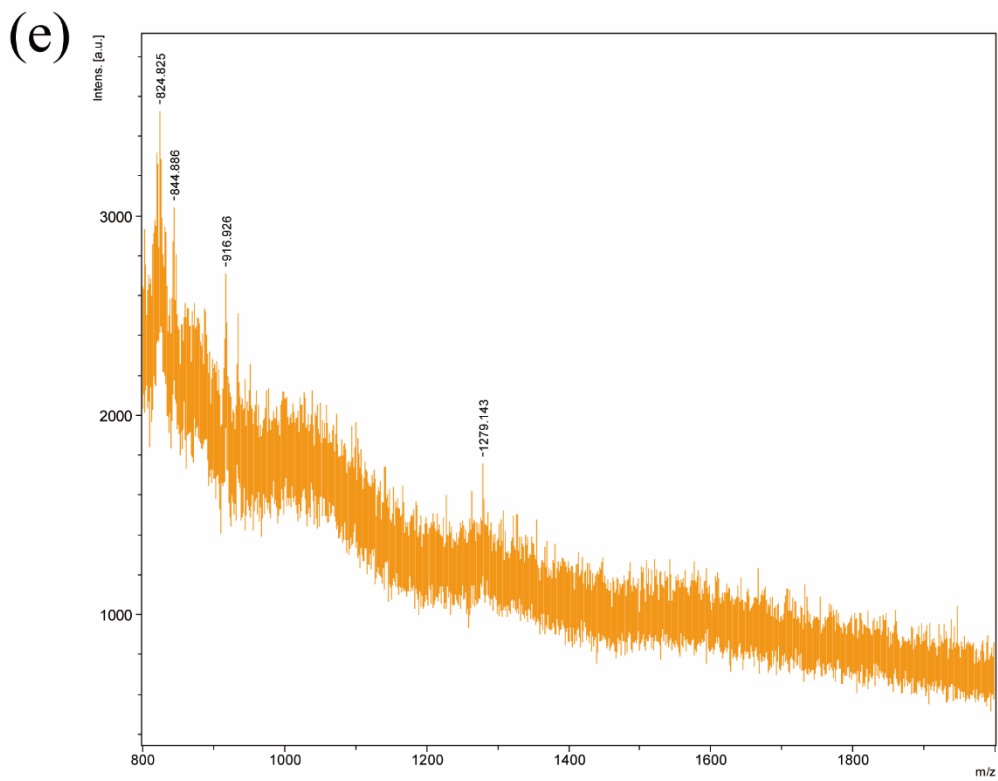


Figure S3. Mass spectra of diluted cleavage solution in various concentrations ((a) 10 mM, (b) 1 mM, (c) 100 μ M, (d) 75 μ M, (e) 50 μ M, (f) 25 μ M) after the 100 mM FITC reaction using Lys-peptide-npp resin.

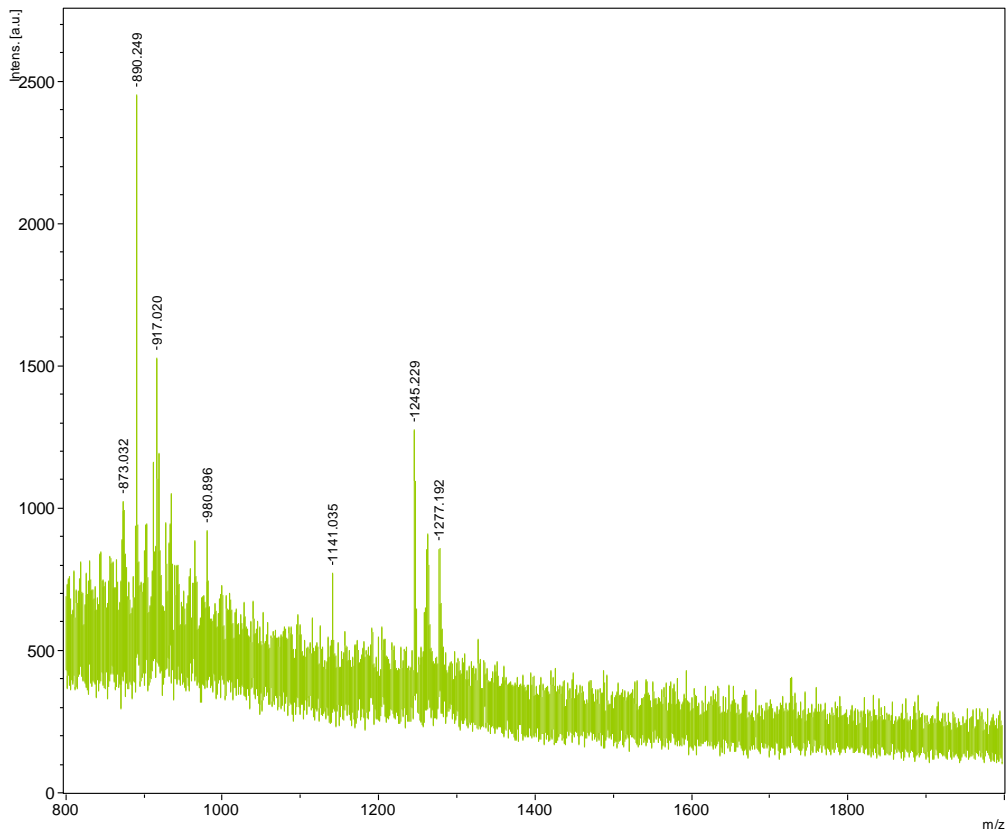


Figure S4. Mass spectrum after the reaction with 50 mL of 25 μ M FITC using Lys-peptide-npp resin.