



Supplementary Material

1 Supplementary Figures

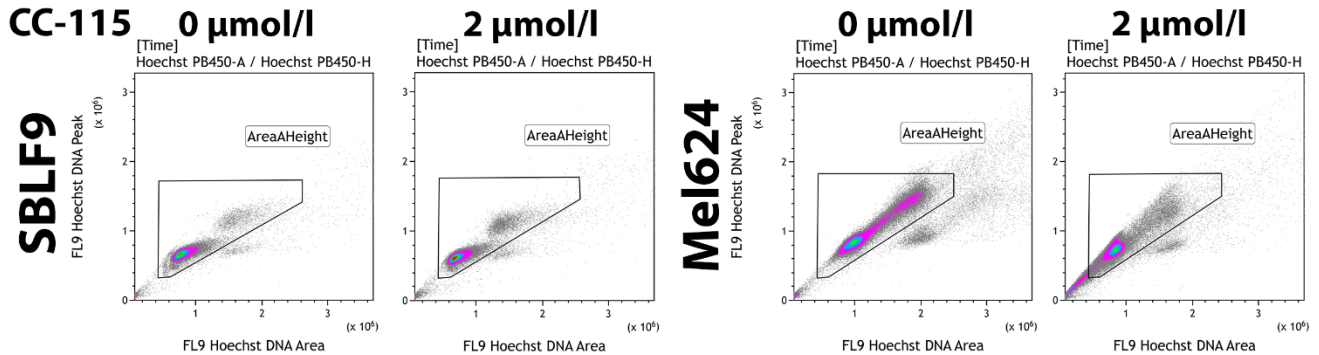


Figure S1

Figure S1: Gating strategy for cell cycle distribution

Flow cytometry was used for cell cycle analysis by Hoechst staining. Examples of representative data are displayed for healthy-donor skin fibroblasts (SBLF9) and melanoma cells (Mel624) for control and treatment with 2 $\mu\text{mol/l}$ CC-115. Graphs show DNA content Area plotted versus DNA content Height. Thereby doublets were excluded.