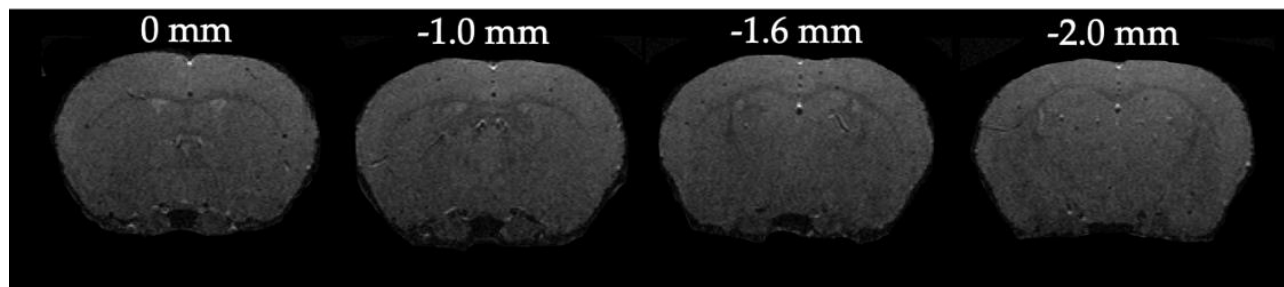


Supplementary Material

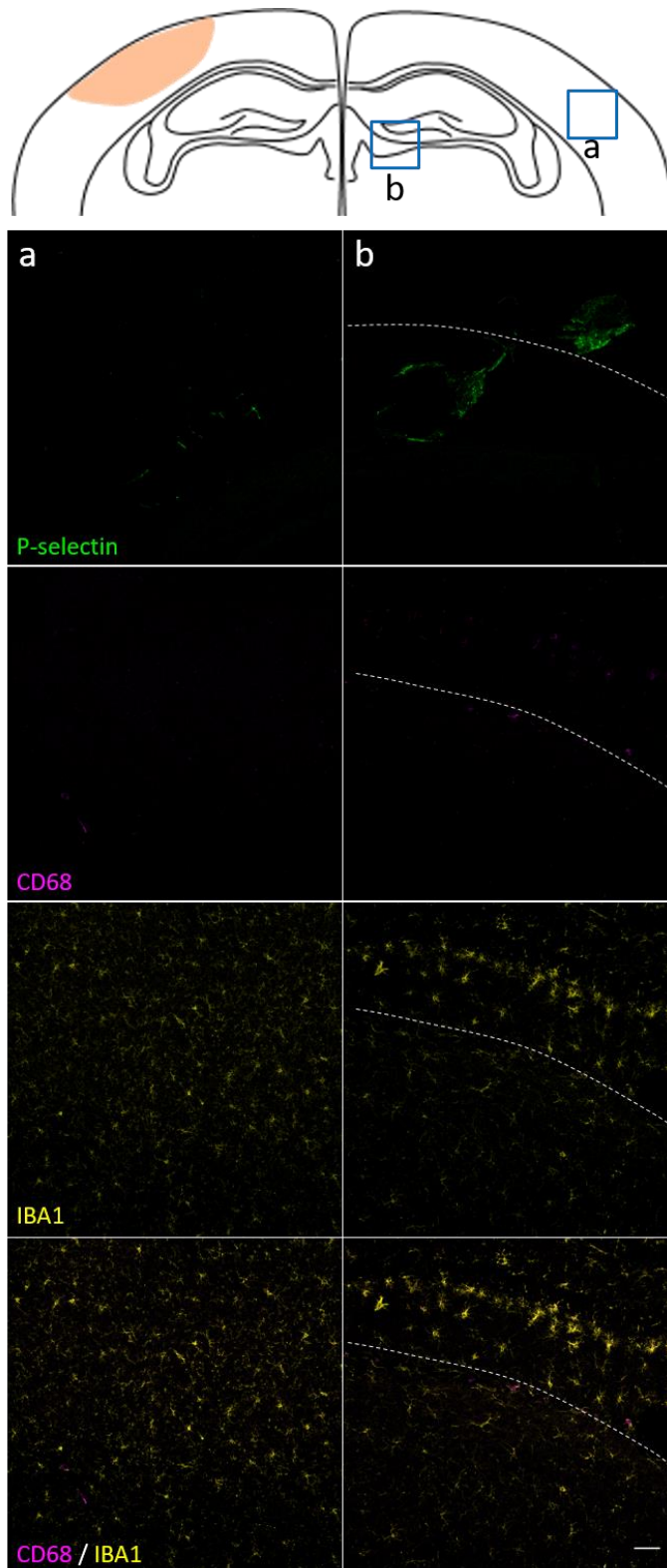
Supplementary Figures

GFEC



10 min after MPIOs- α -P-selectin

Supplementary Figure 1. Sham animal injected with MPIOs- α -P-selectin. Representative coronal slices (A.P.: 0, -1, -1.6, -2 mm from bregma) of a sham showing negligible signal voids 10 minutes after MPIOs- α -P-selectin injection.



Supplementary Figure 2. Spatial distribution of microglia/macrophages in relation to P-selectin 2 days post-TBI in the contralateral hemisphere. Representative micrographs of P-selectin, CD68, IBA1, and CD68/IBA1 in contralateral cortex (a) and hippocampus-thalamus (b). The white dotted line defines the border between the hippocampus (upper part of the image) and the thalamus (lower part of the image), as shown in the sketch. Negligible P-selectin or CD68 staining was detected in the contralateral hemisphere. Scale bar 50 μ m.