

Table S1: Average percentage cover of species per depth range PlatMX A Unconfirmed

Depth Range (m)	<i>Lophelia pertusa</i>	<i>Alcyonium digitatum</i>	Other Anemone	<i>Balanus balanus</i>	Bryozoan	Chirona <i>Chirona</i> hemerhameri	Brittlestars	<i>Mytilus edulis</i>	<i>Metridium dianthus</i>	Obelia Sp.	Other Invertebrate	Sponge Spp.	Tubularia Sp.	Unknown Invertebrate	Tubeworms	Infrastructure Surface	"No Data"	Scalebar	Unknown	Water	Algae
10 to 20	13.89	0.28	0.00	0.00	0.00	2.50	0.00	2.22	45.28	5.83	0.00	0.00	0.00	0.00	0.00	30.00	0.00	0.00	0.00	0.00	0.00
20 to 30	3.33	10.83	0.00	0.00	0.00	0.00	0.00	0.00	44.17	18.33	0.00	0.00	0.00	0.00	0.00	23.33	0.00	0.00	0.00	0.00	0.00
30 to 40	0.00	7.50	0.00	0.00	0.00	0.00	0.00	0.00	65.00	0.00	0.00	0.00	0.00	0.00	2.50	25.00	0.00	0.00	0.00	0.00	0.00
40 to 50	3.50	2.50	0.00	0.00	0.00	3.50	0.00	0.00	57.50	15.00	0.00	0.00	3.00	0.00	0.00	15.00	0.00	0.00	0.00	0.00	0.00
50 to 60	0.28	0.56	0.00	0.00	0.00	0.00	0.00	0.00	75.00	13.33	0.00	0.00	0.00	0.00	0.00	10.56	0.00	0.00	0.00	0.00	0.28
60 to 70	0.00	2.50	0.00	0.00	0.00	0.00	0.00	0.00	73.13	8.75	0.00	0.00	0.00	0.00	0.63	15.00	0.00	0.00	0.00	0.00	0.00
70 to 80	0.00	0.00	0.00	0.00	0.00	0.00	0.00	0.00	85.00	0.00	0.00	0.00	0.00	0.00	0.00	15.00	0.00	0.00	0.00	0.00	0.00
80 to 90	10.00	5.00	0.00	0.00	0.00	0.00	0.00	0.00	65.00	5.00	0.00	0.00	0.00	0.00	5.00	10.00	0.00	0.00	0.00	0.00	0.00
90 to 100	2.69	3.46	0.00	0.00	0.00	2.31	0.00	5.00	49.23	9.62	0.00	0.00	0.00	0.00	7.69	20.00	0.00	0.00	0.00	0.00	0.00
Average	3.74	3.63	0.00	0.00	0.00	0.92	0.00	0.80	62.14	8.43	0.00	0.00	0.33	0.00	0.00	1.76	18.21	0.00	0.00	0.00	0.03
St Dev	4.97	3.63	0.00	0.00	0.00	1.42	0.00	1.74	14.23	6.40	0.00	0.00	1.00	0.00	0.00	2.81	6.81	0.00	0.00	0.00	0.09

Table S2: Average percentage cover of species per depth range PlatMX A Confirmed

Depth Range (m)	<i>Lophelia pertusa</i>	<i>Alcyonium digitatum</i>	Other Anemone	<i>Balanus balanus</i>	Bryozoan	<i>Chirona hameri</i>	Brittlestars	<i>Mytilus edulis</i>	<i>Metridium dianthus</i>	Obelia Sp.	Other Invertebrate	Sponge Spp.	Tubularia Sp.	Unknown Invertebrate	tubeworms	Infrastructure Surface	"No Data"	Scalebar	Unknown	Water	Algae
10 to 20	0.00	0.00	0.00	0.00	0.00	0.00	0.14	6.11	78.89	0.69	0.00	0.00	0.00	0.00	0.00	0.14	13.61	0.00	0.00	0.00	0.42
20 to 30	0.00	0.00	0.00	0.00	0.00	0.00	0.00	0.83	89.17	1.67	0.00	0.00	0.00	0.00	0.00	0.00	8.33	0.00	0.00	0.00	0.00
30 to 40	0.00	0.00	0.00	0.00	0.00	0.00	0.00	0.00	67.50	10.00	0.00	0.00	5.00	0.00	0.00	2.50	15.00	0.00	0.00	0.00	0.00
40 to 50	0.00	0.00	0.00	0.00	0.00	0.00	0.00	0.00	90.00	0.00	0.00	0.00	0.00	0.00	0.00	0.00	10.00	0.00	0.00	0.00	0.00
50 to 60	0.00	0.00	0.00	0.00	0.00	0.00	0.00	0.00	90.28	2.78	0.00	0.00	0.00	0.00	0.00	1.39	5.56	0.00	0.00	0.00	0.00
60 to 70	0.00	0.00	0.00	0.00	0.00	0.00	0.00	0.00	86.25	2.50	0.00	0.00	0.00	0.00	0.00	0.00	11.25	0.00	0.00	0.00	0.00
70 to 80	0.00	0.00	0.00	0.00	0.00	0.00	0.00	0.00	90.00	0.00	0.00	0.00	0.00	0.00	0.00	0.00	10.00	0.00	0.00	0.00	0.00
80 to 90	0.00	0.00	0.00	0.00	0.00	0.00	0.00	0.00	85.00	10.00	0.00	0.00	0.00	0.00	0.00	0.00	5.00	0.00	0.00	0.00	0.00
90 to 100	0.00	0.77	0.00	0.00	0.00	0.00	0.00	0.00	64.62	5.38	0.00	0.00	0.00	0.00	0.00	11.54	17.69	0.00	0.00	0.00	0.00
Average	0.00	0.09	0.00	0.00	0.00	0.00	0.02	0.77	82.41	3.67	0.00	0.00	0.56	0.00	0.00	1.73	10.72	0.00	0.00	0.00	0.05
St Dev	0.00	0.26	0.00	0.00	0.00	0.00	0.05	2.02	9.97	3.95	0.00	0.00	1.67	0.00	0.00	3.78	4.21	0.00	0.00	0.00	0.14

Table S3: Average percentage cover of species per depth range PlatMX B Unconfirmed

Depth Range (m)	<i>Lophelia pertusa</i>	<i>Alcyonium digitatum</i>	Other Anemone	<i>Balanus balanus</i>	Bryozoan	<i>Chirona hameri</i>	Brittlestars	<i>Mytilus edulis</i>	<i>Metridium dianthus</i>	Obelia Sp.	Other Invertebrate	Sponge Spp.	Tubularia Sp.	Unknown Invertebrate	tubeworms	Infrastructure surface	"No Data"	Scalebar	Unknown	Water	Algae	
10 to 20	7.20	0.17	0.00	0.00	0.00	2.91	0.00	1.77	66.80	1.26	0.00	0.00	0.00	0.00	0.17	19.71	0.00	0.00	0.00	0.00	0.00	
20 to 30	0.67	0.00	0.00	0.00	0.00	0.00	0.00	0.00	82.00	1.00	0.00	0.00	0.00	0.00	0.00	0.00	16.33	0.00	0.00	0.00	0.00	0.00
30 to 40	1.00	7.00	0.00	0.00	0.00	0.00	0.00	0.00	68.00	4.00	0.00	0.00	0.00	0.00	0.00	0.00	20.00	0.00	0.00	0.00	0.00	0.00
40 to 50	2.40	0.40	0.00	0.00	0.00	1.80	0.00	0.20	81.40	0.60	0.00	0.00	0.00	0.00	0.00	0.00	13.20	0.00	0.00	0.00	0.00	0.00
50 to 60	0.00	0.11	0.00	0.00	0.00	0.00	0.00	0.00	91.78	0.78	0.00	0.00	0.00	0.00	0.00	0.00	7.33	0.00	0.00	0.00	0.00	0.00
60 to 70	0.50	0.00	0.00	0.00	0.00	0.00	0.00	0.50	87.50	2.00	0.00	0.00	0.00	0.00	0.00	0.00	9.25	0.00	0.00	0.00	0.00	0.25
70 to 80	0.00	0.00	0.00	0.00	0.00	0.00	0.00	0.00	80.00	0.00	0.00	0.00	0.00	0.00	0.00	0.00	20.00	0.00	0.00	0.00	0.00	0.00
80 to 90	6.00	0.00	0.00	0.00	0.00	0.00	0.00	0.00	82.00	8.00	0.00	0.00	0.00	0.00	0.00	0.00	4.00	0.00	0.00	0.00	0.00	0.00
90 to 100	1.85	2.46	0.00	0.00	0.00	2.00	0.00	4.00	60.62	4.00	0.00	0.31	0.00	0.00	0.00	5.85	18.92	0.00	0.00	0.00	0.00	0.00
Average	2.18	1.13	0.00	0.00	0.00	0.75	0.00	0.72	77.79	2.40	0.00	0.03	0.00	0.00	0.00	0.67	14.31	0.00	0.00	0.00	0.00	0.03
St Dev	2.64	2.34	0.00	0.00	0.00	1.16	0.00	1.36	10.34	2.54	0.00	0.10	0.00	0.00	0.00	1.94	6.14	0.00	0.00	0.00	0.00	0.08

Table S4: Average percentage cover of species per depth range PlatMX B Confirmed

Depth Range (m)	<i>Lophelia pertusa</i>	<i>Alcyonium digitatum</i>	Other Anemone	<i>Balanus balanus</i>	Bryozoan	<i>Chirona hameri</i>	Brittlestars	<i>Mytilus edulis</i>	<i>Metridium dianthus</i>	Obelia Sp.	Other Invertebrate	Sponge Spp.	Tubularia Sp.	Unknown Invertebrate	tubeworms	Infrastructure Surface	"No Data"	Scalebar	Unknown	Water	Algae
10 to 20	0.00	0.00	0.00	0.00	0.00	0.06	0.28	9.06	74.44	0.33	0.00	0.00	0.00	0.00	0.00	14.28	0.00	0.00	0.00	1.56	
20 to 30	0.00	0.00	0.00	0.00	0.00	0.00	0.00	1.67	86.33	0.33	0.00	0.00	0.00	0.00	0.33	10.33	0.00	0.00	0.00	1.00	
30 to 40	0.00	0.00	0.00	0.00	0.00	0.00	0.00	0.00	58.00	11.00	0.00	0.00	15.00	0.00	0.00	4.00	12.00	0.00	0.00	0.00	0.00
40 to 50	0.00	0.00	0.00	0.00	0.00	0.00	0.00	0.00	89.20	0.60	0.00	0.00	0.00	0.00	0.00	10.20	0.00	0.00	0.00	0.00	0.00
50 to 60	0.00	0.00	0.00	0.00	0.00	0.00	0.00	0.00	89.44	2.22	0.00	0.00	0.00	0.00	0.44	0.56	7.33	0.00	0.00	0.00	0.00
60 to 70	0.00	0.00	0.00	0.00	0.00	0.00	0.00	0.00	87.75	2.25	0.00	0.00	0.00	0.00	0.00	0.00	10.00	0.00	0.00	0.00	0.00
70 to 80	0.00	0.00	0.00	0.00	0.00	0.00	0.00	0.00	80.00	0.00	0.00	0.00	0.00	0.00	0.00	20.00	0.00	0.00	0.00	0.00	0.00
80 to 90	0.00	0.00	0.00	0.00	0.00	0.00	0.00	0.00	82.00	6.00	0.00	0.00	0.00	0.00	2.00	10.00	0.00	0.00	0.00	0.00	0.00
90 to 100	0.00	0.46	0.00	0.00	0.00	0.00	0.00	0.00	67.38	4.77	0.00	0.00	0.00	0.00	9.69	17.69	0.00	0.00	0.00	0.00	0.00
Average	0.00	0.05	0.00	0.00	0.00	0.01	0.03	1.19	79.38	3.07	0.00	0.00	1.67	0.00	0.05	1.84	12.41	0.00	0.00	0.00	0.30
St Dev	0.00	0.15	0.00	0.00	0.00	0.02	0.09	3.00	10.88	3.64	0.00	0.00	5.00	0.00	0.15	3.24	4.14	0.00	0.00	0.00	0.57

Table S5: Average percentage cover of species per depth range PlatMX Manual

Depth Range (m)	<i>Lophelia pertusa</i>	<i>Alcyonium digitatum</i>	Other Anemone	<i>Balanus balanus</i>	Bryozoan	<i>Chirona hameri</i>	Brittlestars	<i>Mytilus edulis</i>	<i>Metridium dianthus</i>	Obelia Sp.	Other Invertebrate	Sponge Spp.	Tubularia Sp.	Unknown Invertebrate	tubeworms	Infrastructure Surface	"No Data"	Scalebar	Unknown	Water	Algae
10 to 20	0.00	0.00	0.16	0.00	0.00	0.00	0.03	4.73	96.35	0.35	0.00	0.00	0.00	0.00	0.00	0.00	0.00	0.00	0.00	0.00	0.22
20 to 30	0.00	0.00	0.00	0.00	0.00	0.00	0.00	0.83	100.00	0.00	0.00	0.00	0.00	0.00	0.00	0.00	0.00	0.00	0.00	0.00	0.00
30 to 40	0.00	0.00	0.00	0.00	0.00	0.00	0.00	0.00	75.00	0.00	0.00	0.00	20.00	0.00	1.00	4.00	0.00	0.00	0.00	0.00	0.00
40 to 50	0.00	0.00	0.00	0.00	0.00	0.00	0.20	0.00	100.00	0.00	0.00	0.00	0.00	0.00	0.00	0.00	0.00	0.00	0.00	0.00	0.00
50 to 60	0.00	0.00	0.00	0.00	0.00	0.00	0.00	0.00	99.00	1.00	0.00	0.06	0.00	0.00	0.00	0.00	0.00	0.00	0.00	0.00	0.00
60 to 70	0.00	0.00	0.00	0.00	0.00	0.00	0.00	0.00	98.00	2.00	0.00	1.00	0.00	0.00	0.00	0.00	0.00	0.00	0.00	0.00	0.00
70 to 80	0.00	0.00	0.00	0.00	0.00	0.00	0.00	0.00	95.00	5.00	0.00	0.00	0.00	0.00	0.00	0.00	0.00	0.00	0.00	0.00	0.00
80 to 90	0.00	0.00	0.00	0.00	0.00	0.00	0.00	0.00	95.00	0.00	0.00	2.00	0.00	0.00	0.00	3.00	0.00	0.00	0.00	0.00	0.00
90 to 100	0.00	1.00	0.00	0.00	0.00	0.00	0.00	0.00	78.00	8.00	0.00	0.00	0.00	0.00	0.00	15.00	0.00	0.00	0.00	0.00	0.00
Average	0.00	0.11	0.02	0.00	0.00	0.00	0.03	0.62	92.93	1.82	0.00	0.34	2.22	0.00	0.11	2.44	0.00	0.00	0.00	0.00	0.02
St Dev	0.00	0.33	0.05	0.00	0.00	0.00	0.07	1.57	9.53	2.84	0.00	0.70	6.67	0.00	0.33	4.95	0.00	0.00	0.00	0.00	0.07

Table S6: Average percentage cover of species per depth range platEP A Unconfirmed

Depth Range (m)	<i>Lophelia pertusa</i>	<i>Alcyonium digitatum</i>	Other Anemone	<i>Balanus balanus</i>	Bryozoan	<i>Chirona hameri</i>	Brittlestars	<i>Mytilus edulis</i>	<i>Metridium dianthus</i>	Obelia Sp.	Other Invertebrate	Sponge Spp.	Tubularia Sp.	Unknown Invertebrate	tubeworms	Infrastructure Surface	"No Data"	Scalebar	Unknown	Water	Algae
10 to 20	0.00	5.00	0.00	0.00	0.00	0.00	0.00	5.71	67.14	0.00	0.00	0.00	0.00	0.00	0.00	21.43	0.00	0.71	0.00	0.00	0.00
20 to 30	8.00	12.00	0.00	0.00	0.00	1.00	0.00	17.00	34.00	0.00	0.00	0.00	0.00	0.00	0.00	0.00	28.00	0.00	0.00	0.00	0.00
30 to 40	3.75	7.50	0.00	0.00	0.00	0.63	0.00	0.00	57.50	1.88	0.00	0.00	0.00	0.00	0.00	1.88	26.25	0.00	0.00	0.00	0.63
40 to 50	2.33	6.67	0.00	0.00	0.00	1.33	0.00	0.33	53.33	1.33	0.00	0.00	0.33	0.00	0.00	8.67	23.33	0.00	0.00	0.00	2.33
50 to 60	1.00	23.00	0.00	0.00	0.00	0.50	0.00	0.50	26.00	1.00	0.00	0.50	0.00	0.00	0.00	9.50	36.00	0.00	1.50	0.00	0.50
60 to 70	2.00	19.67	0.00	0.00	0.00	1.00	0.00	0.33	50.67	1.33	0.00	0.00	0.00	0.00	0.00	5.33	18.33	0.00	0.67	0.00	0.67
70 to 80	1.36	5.45	0.00	0.00	0.00	1.82	0.00	0.00	52.73	0.91	0.00	0.00	0.00	0.00	0.00	3.64	31.82	0.00	0.00	0.00	2.27
80 to 90	0.00	0.00	0.00	0.00	0.00	0.00	0.00	0.00	60.00	0.00	0.00	0.00	0.00	0.00	0.00	5.00	35.00	0.00	0.00	0.00	0.00
Average	2.31	9.91	0.00	0.00	0.00	0.78	0.00	2.99	50.17	0.81	0.00	0.06	0.04	0.00	0.00	4.25	27.52	0.00	0.36	0.00	0.80
StDev	2.61	7.83	0.00	0.00	0.00	0.63	0.00	5.99	13.63	0.73	0.00	0.18	0.12	0.00	0.00	3.60	6.41	0.00	0.56	0.00	0.97

Table S7: Average percentage cover of species per depth range platEP A Confirmed

Depth Range (m)	<i>Lophelia pertusa</i>	<i>Alcyonium digitatum</i>	Other Anemone	<i>Balanus balanus</i>	Bryozoan	<i>Chirona hameri</i>	Brittlestars	<i>Mytilus edulis</i>	<i>Metridium dianthus</i>	Obelia Sp.	Other Invertebrate	Sponge Spp.	Tubularia Sp.	Unknown Invertebrate	tubeworms	Infrastructure Surface	"No Data"	Scalebar	Unknown	Water	Algae
10 to 20	0.00	2.14	0.00	0.00	0.00	0.00	7.14	13.57	54.29	0.00	0.00	0.00	0.00	0.00	0.00	1.43	21.43	0.00	0.00	0.00	0.00
20 to 30	0.00	0.00	0.00	0.00	0.00	0.00	21.00	4.00	48.00	1.00	0.00	0.00	0.00	0.00	0.00	6.00	20.00	0.00	0.00	0.00	0.00
30 to 40	0.00	0.00	0.00	0.00	0.00	0.00	0.00	0.00	80.00	0.56	0.00	0.00	0.00	0.00	0.00	0.56	18.89	0.00	0.00	0.00	0.00
40 to 50	0.00	5.33	0.00	0.00	0.00	0.00	0.00	0.00	78.33	0.00	0.00	0.00	0.00	0.00	0.00	2.00	14.33	0.00	0.00	0.00	0.00
50 to 60	0.00	18.50	0.00	0.00	0.00	1.50	0.00	0.00	33.00	0.50	0.00	5.00	0.00	0.00	0.00	13.00	28.50	0.00	0.00	0.00	0.00
60 to 70	0.00	16.67	0.00	0.00	0.00	1.00	0.00	0.33	59.00	1.00	0.00	0.00	0.00	0.00	0.00	2.33	19.67	0.00	0.00	0.00	0.00
70 to 80	0.00	0.45	0.00	0.00	0.00	0.00	0.00	0.00	74.09	2.73	0.00	0.00	0.00	0.00	0.00	1.82	20.91	0.00	0.00	0.00	0.00
80 to 90	0.00	0.00	0.00	0.00	0.00	0.00	0.00	0.00	55.00	15.00	0.00	0.00	0.00	0.00	0.00	0.00	30.00	0.00	0.00	0.00	0.00
Average	0.00	5.39	0.00	0.00	0.00	0.31	3.52	2.24	60.21	2.60	0.00	0.63	0.00	0.00	0.00	3.39	21.72	0.00	0.00	0.00	0.00
St Dev	0.00	7.76	0.00	0.00	0.00	0.59	7.49	4.78	16.33	5.09	0.00	1.77	0.00	0.00	0.00	4.28	5.14	0.00	0.00	0.00	0.00

Table S8: Average percentage cover of species per depth range platEP B Unconfirmed

Depth Range (m)	<i>Lophelia pertusa</i>	<i>Alcyonium digitatum</i>	Other Anemone	<i>Balanus balanus</i>	Bryozoan	<i>Chirona hameri</i>	Brittlestars	<i>Mytilus edulis</i>	<i>Metridium dianthus</i>	Obelia Sp.	Other Invertebrate	Sponge Spp.	Tubularia Sp.	Unknown Invertebrate Invertebrate	tubeworms	Infrastructure Surface	"No Data"	Scalebar	Unknown	Water	Algae
10 to 20	0.00	3.43	0.00	0.00	0.00	0.00	0.00	6.57	76.86	0.00	0.00	0.00	0.00	0.00	0.00	0.00	13.14	0.00	0.00	0.00	0.00
20 to 30	0.40	2.80	0.00	0.00	0.00	0.00	4.40	11.60	53.20	0.80	0.00	0.00	0.00	0.00	0.00	0.80	26.00	0.00	0.00	0.00	0.00
30 to 40	0.44	0.67	0.00	0.00	0.00	0.00	0.00	0.00	81.56	0.00	0.00	0.00	0.00	0.00	0.00	0.00	17.33	0.00	0.00	0.00	0.00
40 to 50	0.00	4.43	0.00	0.00	0.00	0.29	0.00	0.00	77.86	0.00	0.00	0.00	0.00	0.00	0.00	0.14	17.29	0.00	0.00	0.00	0.00
50 to 60	0.00	14.89	0.00	0.00	0.00	0.44	0.00	0.00	45.11	0.67	0.00	0.22	0.00	0.00	0.00	11.56	27.11	0.00	0.00	0.00	0.00
60 to 70	0.13	15.20	0.00	0.00	0.00	0.00	0.00	0.13	68.67	1.33	0.00	0.00	0.00	0.00	0.00	0.67	13.87	0.00	0.00	0.00	0.00
70 to 80	0.00	1.09	0.00	0.00	0.00	0.00	0.00	0.00	78.55	0.00	0.00	0.00	0.00	0.00	0.00	0.00	20.36	0.00	0.00	0.00	0.00
80 to 90	0.00	0.00	0.00	0.00	0.00	0.00	0.00	0.00	56.00	0.00	0.00	0.00	0.00	0.00	0.00	2.00	42.00	0.00	0.00	0.00	0.00
Average	0.12	5.31	0.00	0.00	0.00	0.09	0.55	2.29	67.22	0.35	0.00	0.03	0.00	0.00	0.00	1.90	22.14	0.00	0.00	0.00	0.00
StDev	0.19	6.18	0.00	0.00	0.00	0.17	1.56	4.41	13.90	0.52	0.00	0.08	0.00	0.00	0.00	3.96	9.51	0.00	0.00	0.00	0.00

Formatted Table

Table S9: Average percentage cover of species per depth range platEP B Confirmed

Depth Range (m)	<i>Lophelia pertusa</i>	<i>Alcyonium digitatum</i>	Other Anemone	<i>Balanus balanus</i>	Bryozoan	<i>Chirona hameri</i>	Brittlestars	<i>Mytilus edulis</i>	<i>Metridium dianthus</i>	Obelia Sp.	Other Invertebrate	Sponge Spp.	Tubularia Sp.	Unknown Invertebrate Invertebrate	tubeworms	Infrastructure Surface	"No Data"	Scalebar	Unknown	Water	Algae
10 to 20	0.00	0.00	0.00	0.00	0.00	0.00	6.57	14.29	65.43	0.29	0.00	0.00	0.00	0.00	0.00	0.29	13.14	0.00	0.00	0.00	0.00
20 to 30	0.00	0.40	0.00	0.00	0.00	0.40	25.20	1.20	46.80	0.80	0.00	0.00	0.00	0.00	0.00	6.40	18.80	0.00	0.00	0.00	0.00
30 to 40	0.00	0.00	0.00	0.00	0.00	0.00	0.00	0.00	83.33	0.00	0.00	0.67	0.00	0.00	0.00	0.00	16.00	0.00	0.00	0.00	0.00
40 to 50	0.00	5.20	0.00	0.00	0.00	0.40	0.00	0.00	76.67	0.00	0.00	0.00	0.00	0.00	0.00	1.07	16.67	0.00	0.00	0.00	0.00
50 to 60	0.00	11.40	0.00	0.00	0.00	1.20	0.00	0.00	44.20	5.40	0.00	3.40	0.00	0.00	0.00	10.60	23.80	0.00	0.00	0.00	0.00
60 to 70	0.00	17.43	0.00	0.00	0.00	1.57	0.00	0.00	63.29	2.71	0.00	0.00	0.00	0.00	0.00	1.86	13.14	0.00	0.00	0.00	0.00
70 to 80	0.00	0.55	0.00	0.00	0.00	0.00	0.00	0.00	76.55	6.18	0.00	0.00	0.00	0.00	0.00	2.18	14.55	0.00	0.00	0.00	0.00
80 to 90	0.00	8.00	0.00	0.00	0.00	0.00	0.00	0.00	48.00	12.00	0.00	0.00	0.00	0.00	0.00	0.00	32.00	0.00	0.00	0.00	0.00
Average	0.00	5.37	0.00	0.00	0.00	0.45	3.97	1.94	63.03	3.42	0.00	0.51	0.00	0.00	0.00	2.80	18.51	0.00	0.00	0.00	0.00
St Dev	0.00	6.48	0.00	0.00	0.00	0.61	8.88	5.01	15.26	4.24	0.00	1.19	0.00	0.00	0.00	3.78	6.47	0.00	0.00	0.00	0.00

Formatted Table

Table S10: Average percentage cover of species per depth range platEP Manual

Depth Range (m)	<i>Lophelia pertusa</i>	<i>Alcyonium digitatum</i>	Other Anemone	<i>Balanus balanus</i>	Bryozoan	<i>Chirona hameri</i>	Brittlestars	<i>Mytilus edulis</i>	<i>Metridium dianthus</i>	Obelia Sp.	Other Invertebrate	Sponge Spp.	Tubularia Sp.	Unknown Invertebrate Invertebrate	tubeworms	Infrastructure Surface	"No Data"	Scalebar	Unknown	Water	Algae
10 to 20	0	0	0	0	0	0	10	25	65	0	0	0	0	0	0	0.43	0	0	0	0	0
20 to 30	0	0	0	0	0	0	38	25	28	1	0	0	0	0	0	8	0	0	0	0	0
30 to 40	0	0	0	0	0	0	0	0	98	0	0	2	0	0	0	0	0	0	0	0	0
40 to 50	0	2	0	0	0	0	0	0	98	0	0	0.33	0	0	0	0.13	0	0	0	0	0
50 to 60	0	5	0	0	0	2	0	0	50	13	0	4	0	0	0	26	0	0	0	0	0
60 to 70	0	14	0	0	0	1	0.27	0	81	2	0	2	0	0	0	0	0	0	0	0	0
70 to 80	0	1	0	0	0	0	0	0	90	9	0	0.18	0	0	0	0	0	0	0	0	0
80 to 90	0	10	0	0	0	0	0	0	48	40	0	2	0	0	0	0	0	0	0	0	0
Average	0.00	4.57	0.00	0.00	0.00	0.43	5.47	3.57	70.43	9.29	0.00	1.50	0.00	0.00	0.00	4.88	0.00	0.00	0.00	0.00	0.00
St Dev	0.00	5.32	0.00	0.00	0.00	0.74	13.38	11.57	26.08	13.77	0.00	1.43	0.00	0.00	0.00	9.19	0.00	0.00	0.00	0.00	0.00

Formatted Table

Table S11: Average percentage cover of species per depth range PlatMS A Unconfirmed

Depth Range (m)	<i>Lophelia pertusa</i>	<i>Alcyonium digitatum</i>	Other Anemone	<i>Balanus balanus</i>	Bryozoan	<i>Chirona hameri</i>	Brittlestars	<i>Mytilus edulis</i>	<i>Metridium dianthus</i>	Obelia Sp.	Other Invertebrate	Sponge Spp.	Tubularia Sp.	Unknown Invertebrate	tubeworms	Infrastructure Surface	"No Data"	Scalebar	Unknown	Water	Algae	All Anemone
10 to 20	0.45	0.45	0.23	0.00	0.00	0.00	0.00	20.45	16.82	4.77	0.00	0.23	15.68	0.00	0.00	0.91	40.00	0.00	0.00	0.00	0.00	17.05
20 to 30	5.00	1.67	0.00	0.00	0.00	0.00	0.00	18.33	20.00	6.67	0.00	1.67	3.33	0.00	0.00	0.00	43.33	0.00	0.00	0.00	0.00	20.00
40 to 50	5.00	0.00	20.71	0.00	0.00	0.00	7.86	0.71	10.71	7.14	0.00	0.71	0.00	0.00	0.00	2.14	45.00	0.00	0.00	0.00	0.00	31.43
80 to 90	33.89	0.00	8.33	0.00	0.00	0.00	5.00	2.78	4.44	5.56	0.00	0.00	0.56	0.00	0.00	1.11	38.33	0.00	0.00	0.00	0.00	12.78
110 to 120	12.71	0.00	14.58	0.00	0.00	0.00	1.46	1.67	6.04	14.79	0.00	0.42	0.00	0.00	0.00	6.04	42.29	0.00	0.00	0.00	0.00	20.63
140 to 150	5.00	0.00	0.00	0.00	0.00	0.00	0.00	0.00	0.00	0.00	0.00	0.00	0.00	0.00	0.00	0.00	95.00	0.00	0.00	0.00	0.00	0.00
150 to 160	15.00	0.00	15.00	0.00	0.00	0.00	0.00	0.00	10.00	10.00	0.00	5.00	0.00	0.00	0.00	10.00	35.00	0.00	0.00	0.00	0.00	25.00
180 to 190	0.00	0.00	0.00	0.00	0.00	0.00	0.00	5.00	5.00	40.00	0.00	0.00	0.00	0.00	0.00	5.00	45.00	0.00	0.00	0.00	0.00	5.00
Average	9.63	0.27	7.36	0.00	0.00	0.00	1.79	6.12	9.13	11.12	0.00	1.00	2.45	0.00	0.00	3.15	47.99	0.00	0.00	0.00	0.00	16.48
St Dev	11.14	0.59	8.48	0.00	0.00	0.00	3.01	8.38	6.68	12.42	0.00	1.71	5.47	0.00	0.00	3.56	19.30	0.00	0.00	0.00	0.00	15.16

Formatted Table

Table S12: Average percentage cover of species per depth range PlatMS A Confirmed

Depth Range (m)	<i>Lophelia pertusa</i>	<i>Alcyonium digitatum</i>	Other Anemone	<i>Balanus balanus</i>	Bryozoan	<i>Chirona hameri</i>	Brittlestars	<i>Mytilus edulis</i>	<i>Metridium dianthus</i>	Obelia Sp.	Other Invertebrate	Sponge Spp.	Tubularia Sp.	Unknown Invertebrate	tubeworms	Infrastructure Surface	"No Data"	Scalebar	Unknown	Water	Algae	All Anemone
10 to 20	0.00	0.00	3.00	0.00	0.00	0.00	0.00	20.50	0.00	0.25	0.00	0.00	41.75	0.00	0.00	0.50	34.00	0.00	0.00	0.00	0.00	3.00
20 to 30	0.00	0.00	13.33	0.00	0.00	0.00	0.00	28.33	1.67	0.00	0.00	0.00	23.33	0.00	0.00	0.00	33.33	0.00	0.00	0.00	0.00	15.00
40 to 50	0.00	4.29	29.29	0.00	0.00	0.00	15.71	0.00	0.71	4.29	0.00	5.00	0.00	0.00	0.00	1.43	39.29	0.00	0.00	0.00	0.00	30.00
80 to 90	41.67	0.00	11.11	0.00	0.00	0.00	7.22	0.00	0.00	2.78	0.00	1.11	0.00	0.00	0.00	2.78	33.33	0.00	0.00	0.00	0.00	11.11
110 to 120	21.67	0.00	25.56	0.00	0.00	0.00	5.56	0.00	0.00	8.33	0.56	1.11	0.00	0.00	0.00	1.11	36.11	0.00	0.00	0.00	0.00	25.56
140 to 150	5.00	0.00	7.50	0.00	0.00	0.00	7.50	0.00	0.00	25.00	0.00	0.00	0.00	0.00	0.00	2.50	52.50	0.00	0.00	0.00	0.00	7.50
150 to 160	15.00	0.00	21.67	0.00	0.00	0.00	6.11	0.00	0.00	17.78	0.00	5.00	0.00	0.00	0.00	3.33	31.11	0.00	0.00	0.00	0.00	21.67
180 to 190	0.00	0.00	5.63	0.00	0.00	0.00	2.50	0.00	0.00	17.50	0.00	2.50	0.00	0.00	2.50	37.50	31.88	0.00	0.00	0.00	0.00	5.63
Average	10.42	0.54	14.63	0.00	0.00	0.00	5.58	6.10	0.30	9.49	0.07	1.84	8.14	0.00	0.31	6.14	36.44	0.00	0.00	0.00	0.00	14.93
St Dev	15.06	1.52	9.75	0.00	0.00	0.00	5.09	11.49	0.61	9.43	0.20	2.13	15.85	0.00	0.88	12.72	6.98	0.00	0.00	0.00	0.00	10.35

Formatted Table

Table S13: Average percentage cover of species per depth range PlatMS B Unconfirmed

Depth Range (m)	<i>Lophelia pertusa</i>	<i>Alcyonium digitatum</i>	Other Anemone	<i>Balanus balanus</i>	Bryozoan	<i>Chirona hameri</i>	Brittlestars	<i>Mytilus edulis</i>	<i>Metridium dianthus</i>	Obelia Sp.	Other Invertebrate	Sponge Spp.	Tubularia Sp.	Unknown Invertebrate tubeworms	Infrastructure Surface	"No Data"	Scalebar	Unknown	Water	Algae	All Anemone	
10 to 20	0.00	3.45	0.00	0.00	0.00	0.55	0.00	11.55	21.64	7.82	0.00	0.09	0.09	0.00	0.00	8.18	46.64	0.00	0.00	0.00	0.00	21.64
20 to 30	0.67	0.00	0.00	0.00	0.00	0.00	0.00	4.67	26.00	12.00	0.00	0.67	0.00	0.00	0.00	6.67	49.33	0.00	0.00	0.00	0.00	26.00
40 to 50	0.00	1.43	0.00	0.00	0.00	0.86	1.14	2.57	31.43	6.57	0.00	0.00	0.57	0.00	0.00	3.43	52.00	0.00	0.00	0.00	0.00	31.43
80 to 90	5.78	0.22	0.00	0.00	0.00	1.11	1.33	5.56	25.11	8.22	0.00	0.00	2.44	0.00	0.00	3.11	47.11	0.00	0.00	0.00	0.00	25.11
110 to 120	0.89	0.22	0.00	0.00	0.00	0.89	0.89	4.22	34.67	5.78	0.00	0.00	4.00	0.00	0.00	5.11	43.33	0.00	0.00	0.00	0.00	34.67
140 to 150	4.00	0.00	0.00	0.00	0.00	3.00	1.00	2.00	15.00	12.00	0.00	0.00	4.00	0.00	0.00	1.00	58.00	0.00	0.00	0.00	0.00	15.00
150 to 160	0.89	0.44	0.00	0.00	0.00	0.22	0.44	5.11	35.56	11.33	0.00	0.00	1.11	0.00	0.00	6.00	38.89	0.00	0.00	0.00	0.00	35.56
180 to 190	1.80	0.00	0.00	0.00	0.00	4.20	0.00	5.60	13.60	21.80	0.00	0.00	1.00	0.00	0.00	5.40	46.60	0.00	0.00	0.00	0.00	13.60
Average	1.75	0.72	0.00	0.00	0.00	1.35	0.60	5.16	25.37	10.69	0.00	0.09	1.65	0.00	0.00	4.86	47.74	0.00	0.00	0.00	0.00	25.37
St Dev	2.07	1.20	0.00	0.00	0.00	1.47	0.56	2.90	8.34	5.11	0.00	0.23	1.63	0.00	0.00	2.27	5.69	0.00	0.00	0.00	0.00	8.34

Table S14: Average percentage cover of species per depth range PlatMS B Confirmed

Depth Range (m)	<i>Lophelia pertusa</i>	<i>Alcyonium digitatum</i>	Other Anemone	<i>Balanus balanus</i>	Bryozoan	<i>Chirona hameri</i>	Brittlestars	<i>Mytilus edulis</i>	<i>Metridium dianthus</i>	Obelia Sp.	Other Invertebrate	Sponge Spp.	Tubularia Sp.	Unknown <i>Invertebrate</i> tubeworms	Infrastructure Surface	"No Data"	Scalebar	Unknown	Water	Algae	All Anemone	
10 to 20	0.00	0.00	1.60	0.00	0.00	0.00	0.00	23.70	1.60	1.30	0.00	0.00	37.70	0.00	0.00	0.20	33.90	0.00	0.00	0.00	0.00	3.20
20 to 30	0.00	0.00	0.00	0.00	0.00	0.00	0.00	34.00	5.33	0.00	0.00	0.00	25.33	0.00	0.00	0.67	34.67	0.00	0.00	0.00	0.00	5.33
40 to 50	0.00	5.43	32.86	0.00	0.00	0.00	8.29	0.00	2.00	3.71	0.86	1.71	0.00	0.00	0.57	2.00	42.29	0.00	0.29	0.00	0.00	34.86
80 to 90	34.44	0.00	8.67	0.00	0.00	0.00	9.33	0.00	0.22	5.11	0.44	0.22	0.00	0.22	0.22	4.89	36.22	0.00	0.00	0.00	0.00	8.89
110 to 120	21.56	0.22	12.00	0.00	0.00	0.00	4.67	0.00	5.33	14.00	0.22	1.78	0.22	0.22	1.11	1.78	36.67	0.00	0.22	0.00	0.00	17.33
140 to 150	7.00	0.00	5.00	0.00	0.00	0.00	10.00	0.00	0.00	20.00	0.00	1.00	0.00	0.00	2.00	2.00	52.00	0.00	1.00	0.00	0.00	5.00
150 to 160	13.78	0.00	16.22	0.00	0.00	0.00	7.11	0.22	2.00	19.78	0.00	2.22	0.00	0.00	0.44	8.22	30.00	0.00	0.00	0.00	0.00	18.22
180 to 190	0.00	0.00	4.25	0.00	0.00	0.50	3.50	0.00	1.50	21.50	0.00	1.75	0.00	0.00	1.00	34.00	32.00	0.00	0.00	0.00	0.00	5.75
Average	9.60	0.71	10.07	0.00	0.00	0.06	5.36	7.24	2.25	10.68	0.19	1.09	7.91	0.06	0.67	6.72	37.22	0.00	0.19	0.00	0.00	12.32
StDev	12.83	1.91	10.66	0.00	0.00	0.18	3.97	13.62	2.05	9.10	0.31	0.90	14.94	0.10	0.68	11.33	6.99	0.00	0.35	0.00	0.00	10.75

Formatted Table

Table S15: Average percentage cover of species per depth range PlatMS C Unconfirmed

Depth Range (m)	<i>Lophelia pertusa</i>	<i>Alcyonium digitatum</i>	Other Anemone	<i>Balanus balanus</i>	Bryozoan	<i>Chirona hameri</i>	Brittlestars	<i>Mytilus edulis</i>	<i>Metridium dianthus</i>	Obelia Sp.	Other Invertebrate	Sponge Spp.	Tubularia Sp.	Unknown Invertebrate tubeworms	Infrastructure Surface	"No Data"	Scalebar	Unknown	Water	Algae	All Anemone	
10 to 20	0.77	0.68	0.50	0.00	0.00	0.36	0.00	23.18	14.32	3.55	0.00	0.05	17.23	0.00	0.00	1.23	38.14	0.00	0.00	0.00	0.00	14.82
20 to 30	2.33	1.00	1.00	0.00	0.00	0.00	0.00	26.33	17.00	4.33	0.00	2.00	1.67	0.00	0.00	0.33	44.00	0.00	0.00	0.00	0.00	18.00
40 to 50	2.57	1.71	19.71	0.00	0.00	0.00	6.86	1.57	14.29	5.14	0.00	0.29	0.00	0.00	0.00	1.00	46.86	0.00	0.00	0.00	0.00	34.00
80 to 90	30.78	0.00	10.89	0.00	0.00	0.44	4.89	3.22	4.33	5.22	0.00	0.11	0.44	0.00	0.00	1.44	38.22	0.00	0.00	0.00	0.00	15.22
110 to 120	19.11	0.11	22.00	0.00	0.00	0.11	3.22	0.67	5.56	9.11	0.00	0.22	0.22	0.00	0.00	3.22	36.44	0.00	0.00	0.00	0.00	27.56
140 to 150	11.00	0.00	6.50	0.00	0.00	1.00	0.00	0.50	1.50	17.00	0.00	0.00	0.00	0.00	0.00	0.00	62.50	0.00	0.00	0.00	0.00	8.00
150 to 160	14.44	0.00	15.33	0.00	0.00	0.00	2.67	2.22	8.00	15.33	0.00	1.33	0.00	0.00	0.00	6.89	33.78	0.00	0.00	0.00	0.00	23.33
180 to 190	0.90	0.00	3.50	0.00	0.00	0.10	0.90	2.50	4.70	22.30	0.00	0.50	0.50	0.00	0.00	22.60	41.50	0.00	0.00	0.00	0.00	8.20
Average	10.24	0.44	9.93	0.00	0.00	0.25	2.32	7.52	8.71	10.25	0.00	0.56	2.51	0.00	0.00	4.59	42.68	0.00	0.00	0.00	0.00	18.64
StDev	10.80	0.64	8.39	0.00	0.00	0.35	2.57	10.71	5.72	7.06	0.00	0.72	5.97	0.00	0.00	7.60	9.04	0.00	0.00	0.00	0.00	9.15

Formatted Table

Table S16: Average percentage cover of species per depth range PlatMS C Confirmed

Depth Range (m)	<i>Lophelia pertusa</i>	<i>Alcyonium digitatum</i>	Other Anemone	<i>Balanus balanus</i>	Bryozoan	<i>Chirona hameri</i>	Brittlestars	<i>Mytilus edulis</i>	<i>Metridium dianthus</i>	Obelia Sp.	Other Invertebrate	Sponge Spp.	Tubularia Sp.	Unknown Invertebrate tubeworms	Infrastructure Surface	"No Data"	Scalebar	Unknown	Water	Algae	All Anemor	
10 to 20	0.00	0.00	4.40	0.00	0.00	0.00	0.00	25.75	0.10	0.35	0.00	0.00	36.70	0.00	0.00	0.60	32.10	0.00	0.00	0.00	0.00	4.50
20 to 30	0.00	0.00	10.00	0.00	0.00	0.00	0.00	32.50	0.00	0.50	0.00	0.00	24.00	0.00	0.00	0.00	33.00	0.00	0.00	0.00	0.00	10.00
40 to 50	0.00	6.00	31.57	0.00	0.00	0.00	10.86	0.00	0.14	4.57	0.43	1.57	0.00	0.00	0.00	1.00	43.86	0.00	0.00	0.00	0.00	31.71
80 to 90	36.56	0.00	9.44	0.00	0.00	0.00	8.67	0.00	0.11	5.44	0.22	0.33	0.00	0.00	0.11	3.78	35.33	0.00	0.00	0.00	0.00	9.56
110 to 120	21.78	0.00	20.89	0.00	0.00	0.00	5.22	0.00	0.11	13.67	0.33	1.56	0.22	0.00	0.22	2.11	33.89	0.00	0.00	0.00	0.00	21.00
140 to 150	5.50	0.00	7.00	0.00	0.00	0.00	5.50	0.00	0.00	25.50	0.00	1.00	0.00	0.00	0.00	0.50	55.00	0.00	0.00	0.00	0.00	7.00
150 to 160	15.67	0.00	16.11	0.00	0.00	0.00	3.78	0.11	0.00	23.56	0.11	3.11	0.00	0.00	0.33	5.78	31.44	0.00	0.00	0.00	0.00	16.11
180 to 190	0.00	0.00	7.25	0.00	0.00	0.00	3.75	0.00	0.38	22.75	0.00	1.75	0.00	0.00	0.50	29.63	34.00	0.00	0.00	0.00	0.00	7.63
Average	9.94	0.75	13.33	0.00	0.00	0.00	4.72	7.30	0.11	12.04	0.14	1.17	7.62	0.00	0.15	5.42	37.33	0.00	0.00	0.00	0.00	13.44
StDev	13.61	2.12	9.11	0.00	0.00	0.00	3.79	13.59	0.12	10.69	0.17	1.06	14.44	0.00	0.19	9.97	8.13	0.00	0.00	0.00	0.00	9.11

Formatted Table

Table S17: Average percentage cover of species per depth range PlatMS Manual

Depth Range (m)	<i>Lophelia pertusa</i>	<i>Alcyonium digitatum</i>	Other Anemone	<i>Balanus balanus</i>	Bryozoan	<i>Chirona hameri</i>	Brittlestars	<i>Mytilus edulis</i>	<i>Metridium dianthus</i>	Obelia Sp.	Other Invertebrate	Sponge Spp.	Tubularia Sp.	Unknown Invertebrate Invertebrate	tubeworms	Infrastructure Surface	"No Data"	Scalebar	Unknown	Water	Algae	All Anemone
10 to 20	0.00	0.00	0.00	0.00	0.00	0.00	0.67	37.62	16.24	1.90	0.00	1.43	50.00	0.00	0.00	1.90	0.00	0.00	0.00	0.00	0.00	16.24
20 to 30	0.00	0.00	0.00	0.00	0.00	0.00	0.00	61.25	11.25	0.00	0.00	0.00	33.75	0.00	0.00	0.00	0.00	0.00	0.00	0.00	0.00	11.25
40 to 50	0.00	5.71	0.00	0.00	0.00	0.00	22.00	0.00	42.86	7.14	0.14	6.71	1.43	0.00	0.00	0.00	0.00	0.00	0.00	0.00	0.00	42.86
80 to 90	66.67	0.00	0.00	0.00	0.00	0.00	10.56	1.89	12.00	0.00	0.00	1.78	0.00	0.00	0.56	0.00	0.00	0.00	0.00	0.00	0.00	12.00
110-120	45.00	0.00	0.00	0.00	0.00	0.00	5.10	0.40	29.70	13.00	0.20	2.10	0.00	0.10	0.00	0.00	0.00	0.00	0.00	0.00	0.00	29.70
140-150	15.00	0.00	0.00	0.00	0.00	0.00	21.00	1.00	5.50	5.00	0.50	7.50	0.00	0.00	0.00	0.00	0.00	0.00	0.00	0.00	0.00	5.50
150-160	40.78	0.33	0.00	0.00	0.00	0.00	8.11	0.11	31.67	33.33	0.00	3.44	0.00	0.00	0.22	0.00	0.00	0.00	0.00	0.00	0.00	31.67
180-190	1.11	0.00	0.00	0.00	0.00	0.00	2.22	0.00	10.33	29.44	0.00	0.00	0.00	0.00	0.11	43.33	0.00	0.00	0.00	0.00	0.00	10.33
Average	21.07	0.76	0.00	0.00	0.00	0.00	8.71	12.78	19.94	11.23	0.11	2.87	10.65	0.01	0.11	5.65	0.00	0.00	0.00	0.00	0.00	19.94
StDev	26.21	2.01	0.00	0.00	0.00	0.00	8.68	23.50	13.15	13.19	0.18	2.85	19.76	0.04	0.20	15.24	0.00	0.00	0.00	0.00	0.00	13.15

Formatted Table

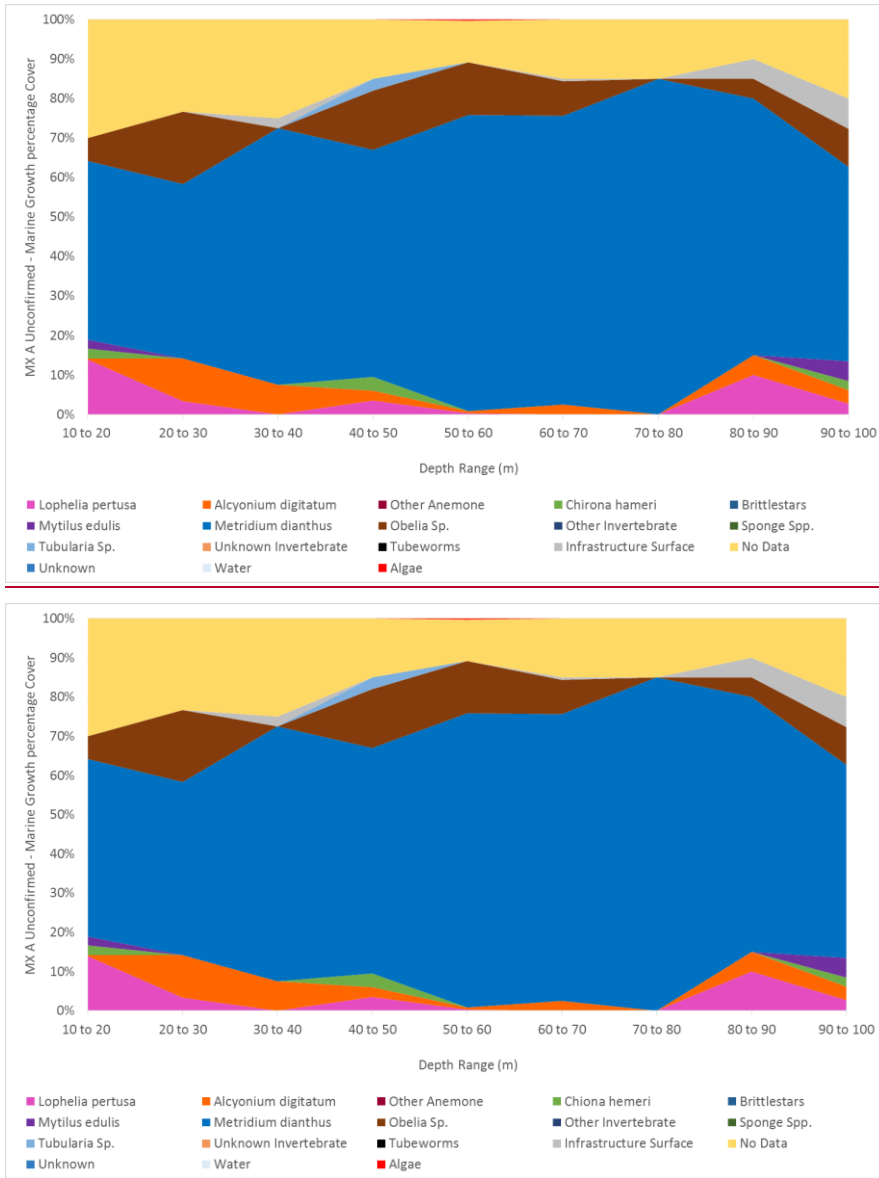


Figure S1: Percentage cover per species by depth range for PlatMX A Unconfirmed

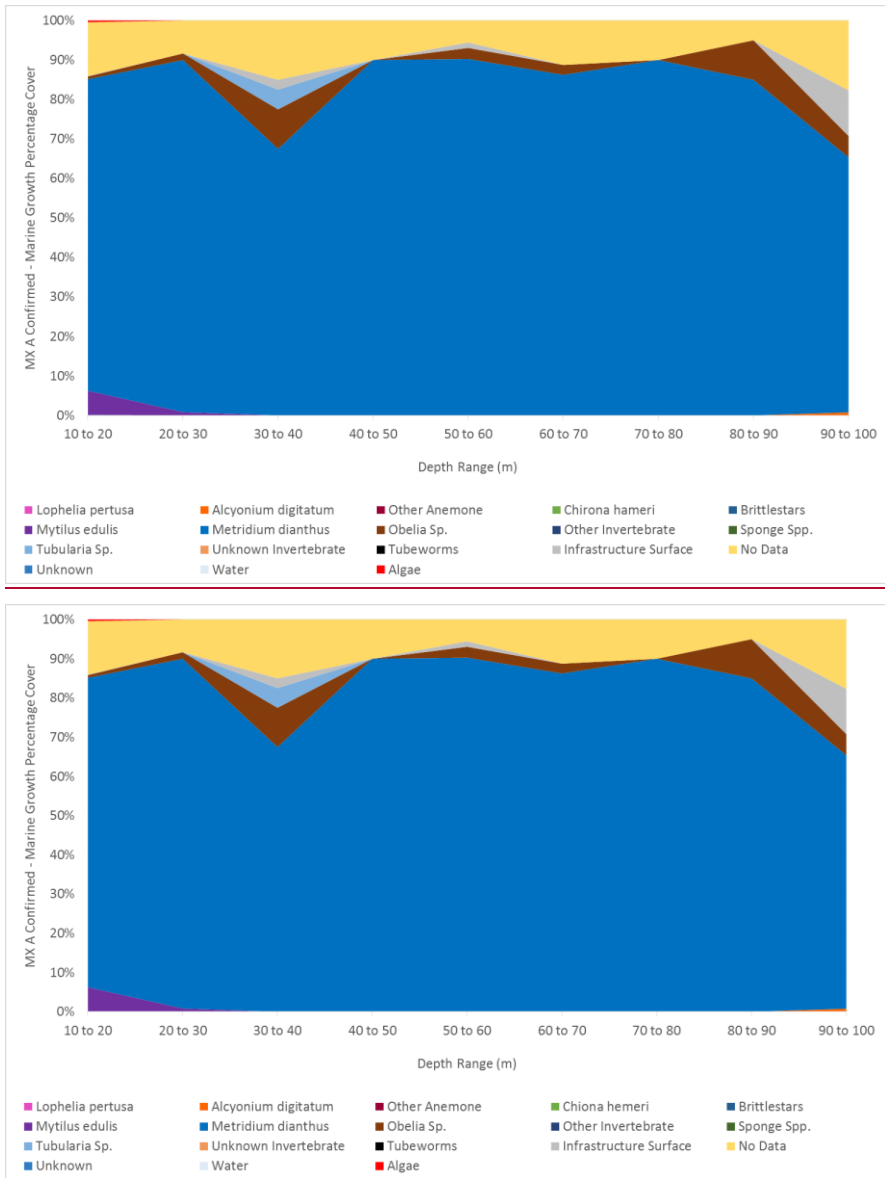


Figure S2: Percentage cover per species by depth range for PlatMX A Confirmed

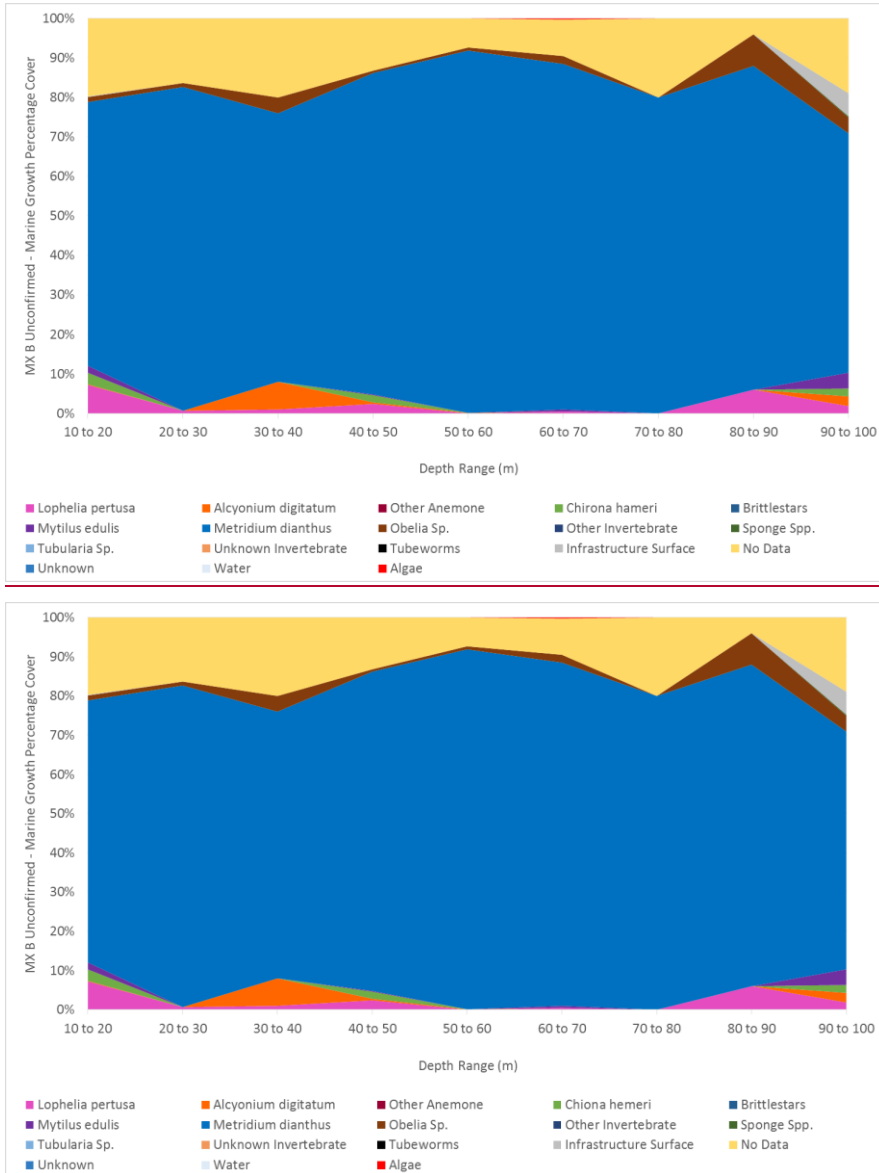


Figure S3: Percentage cover per species by depth range for PlatMX B Unconfirmed

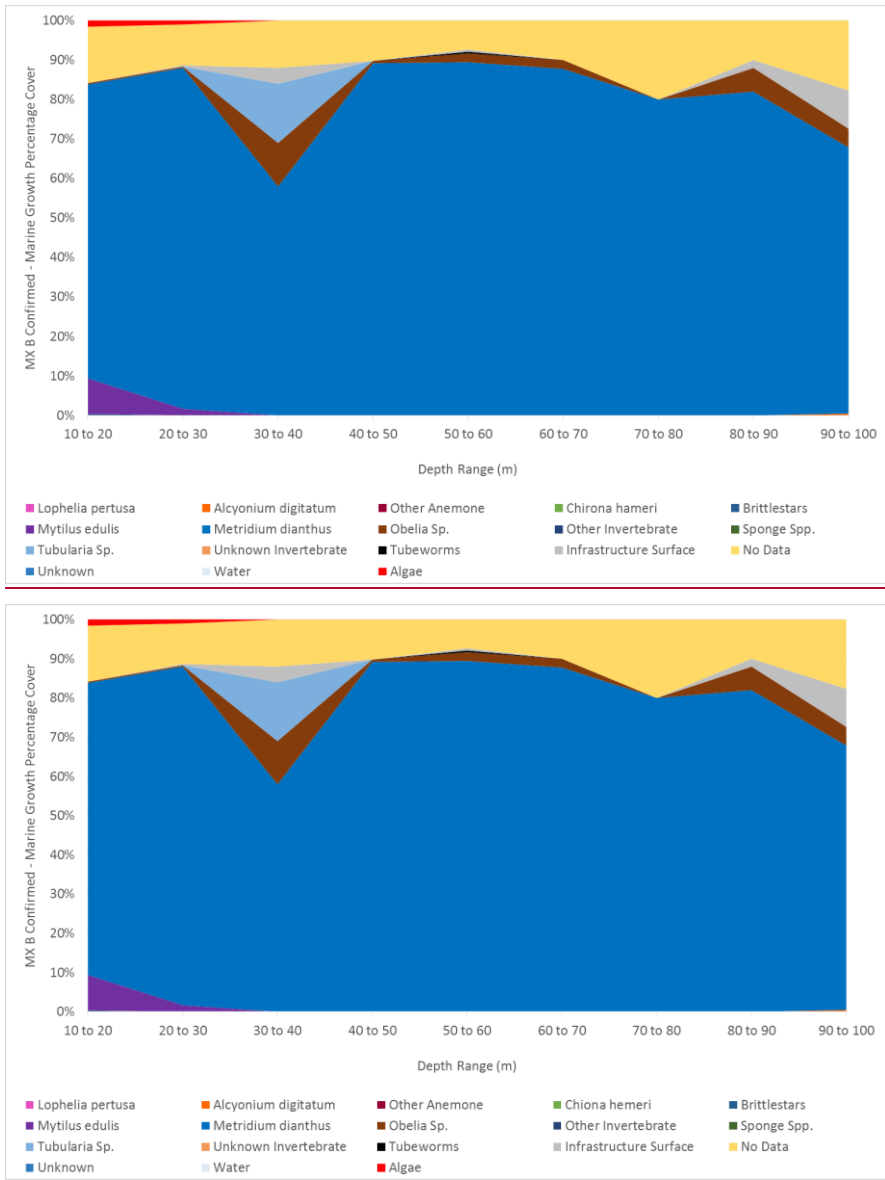


Figure S4: Percentage cover per species by depth range for PlatMX B Confirmed

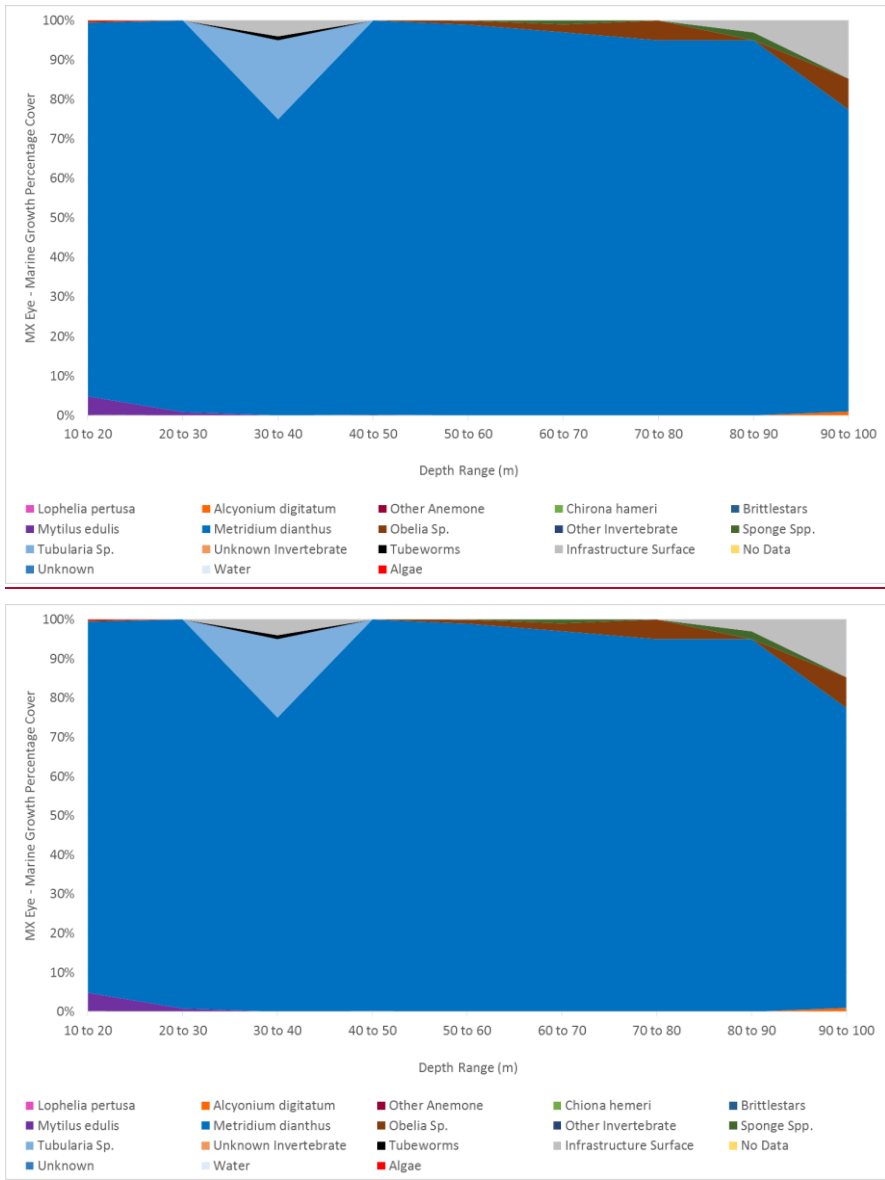


Figure S5: Percentage cover per species by depth range for PlatMX Manual

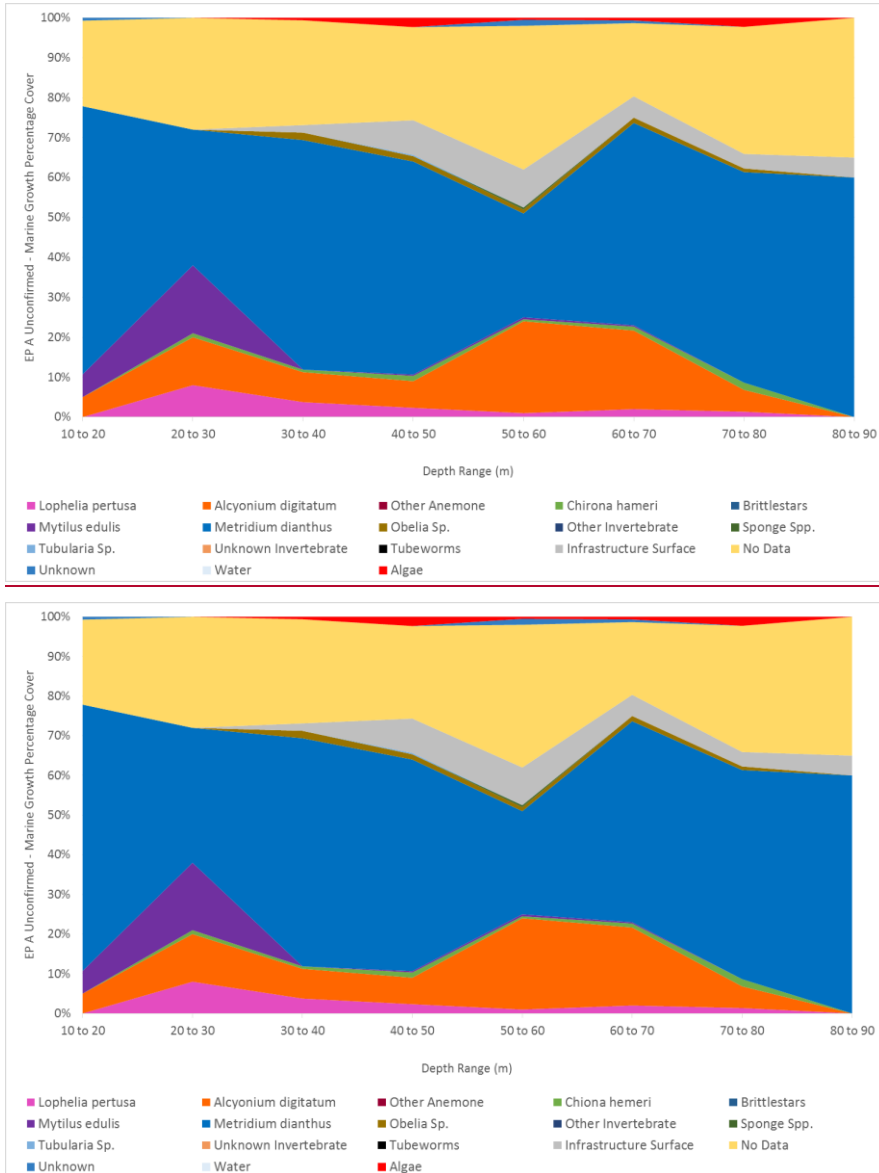


Figure S6: Percentage cover per species by depth range for PlatEP A Unconfirmed

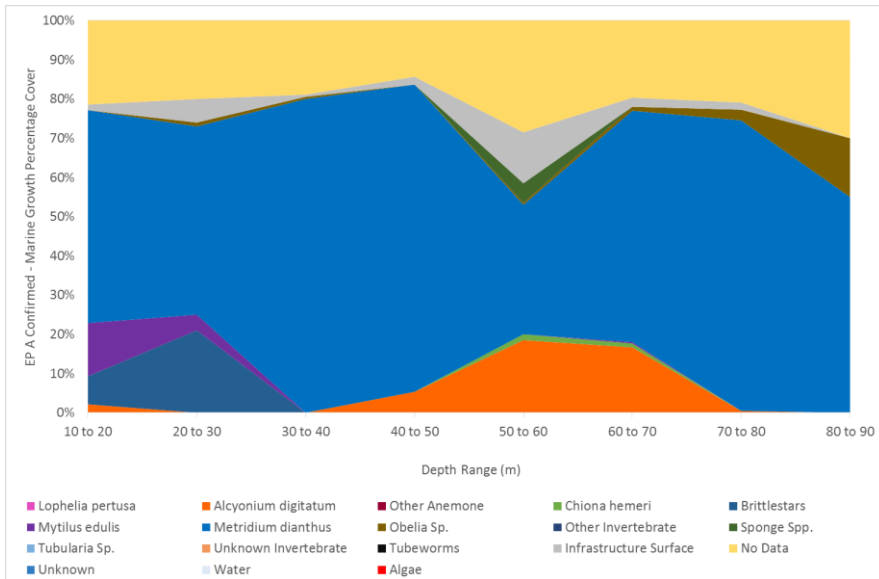
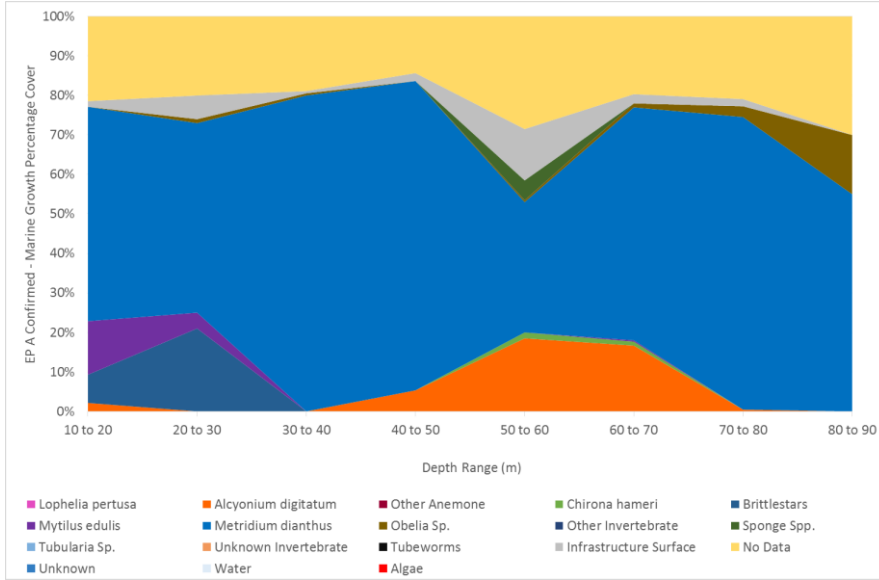


Figure S7: Percentage cover per species by depth range for platEP A Confirmed

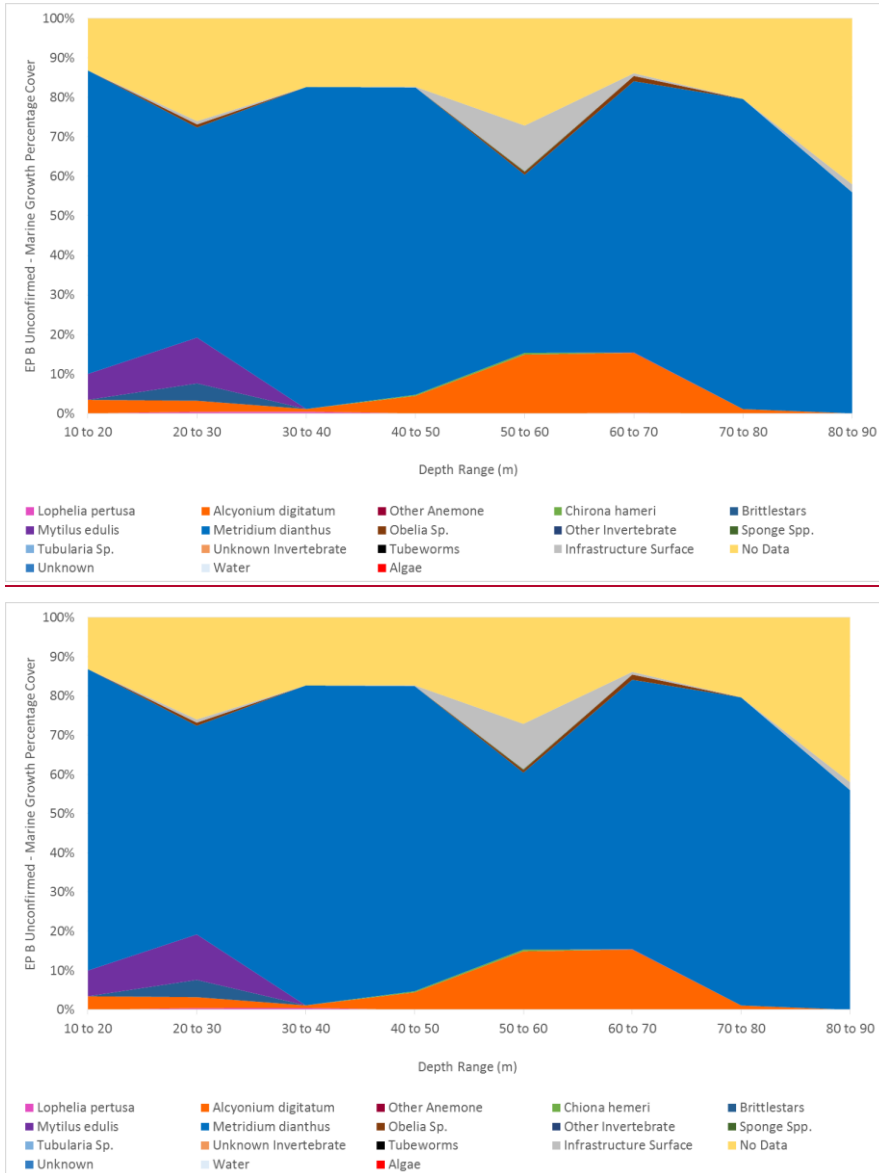


Figure S8: Percentage cover per species by depth range for platEP B Unconfirmed

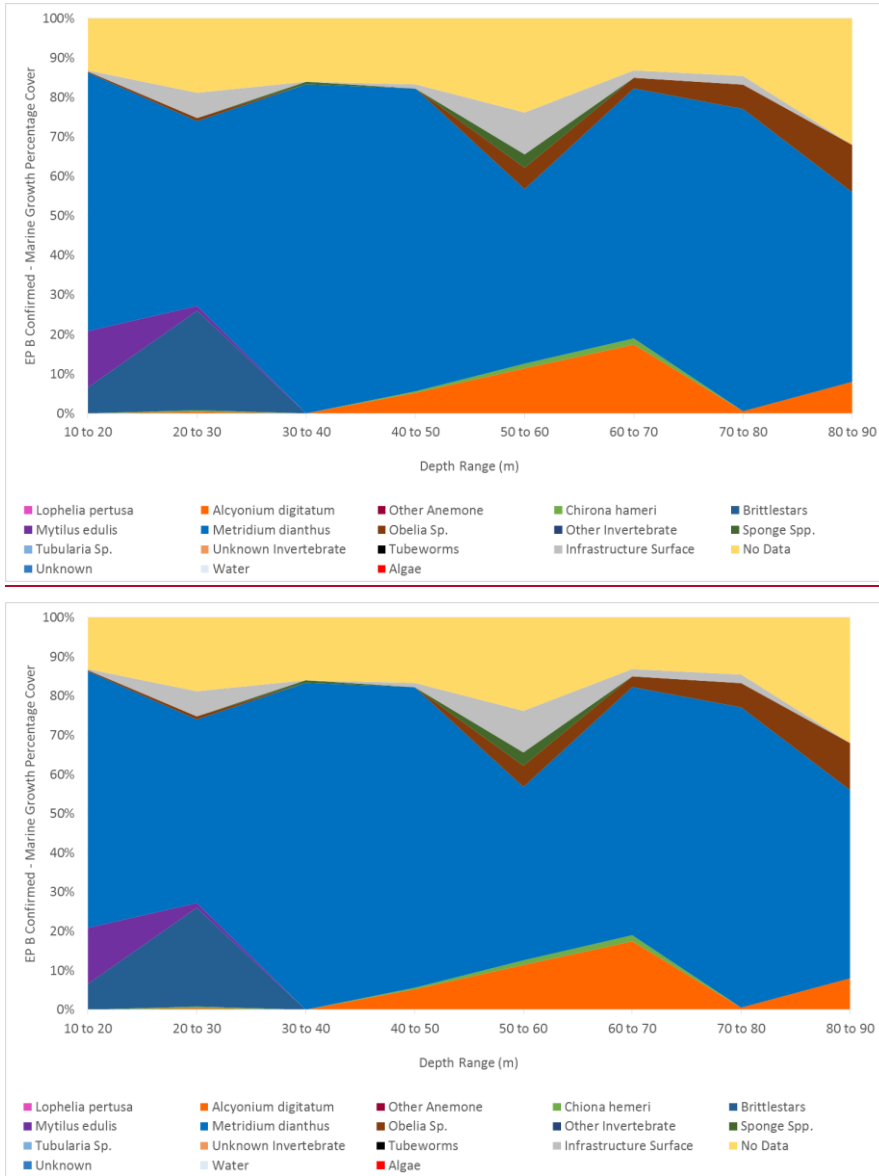


Figure S9: Percentage cover per species by depth range for platEP B Confirmed

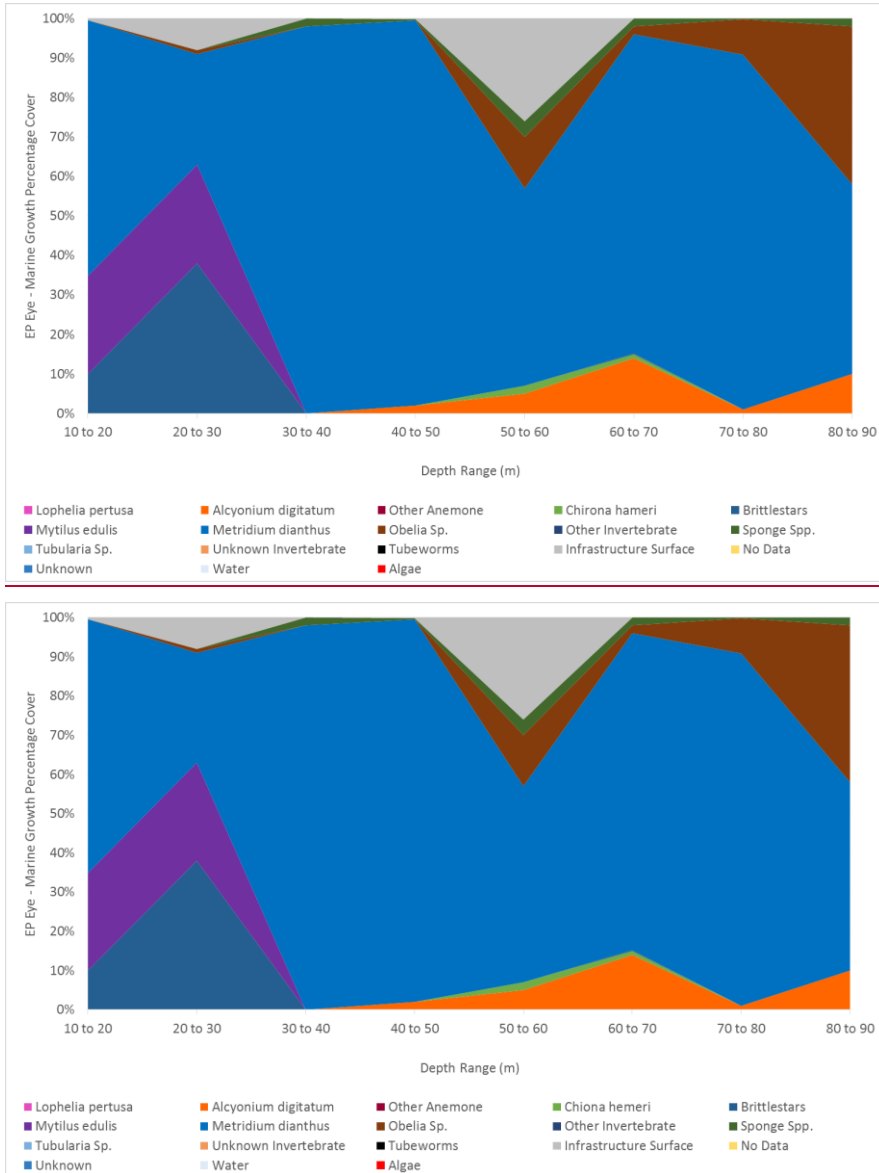


Figure S10: Percentage cover per species by depth range for PlatEP Manual

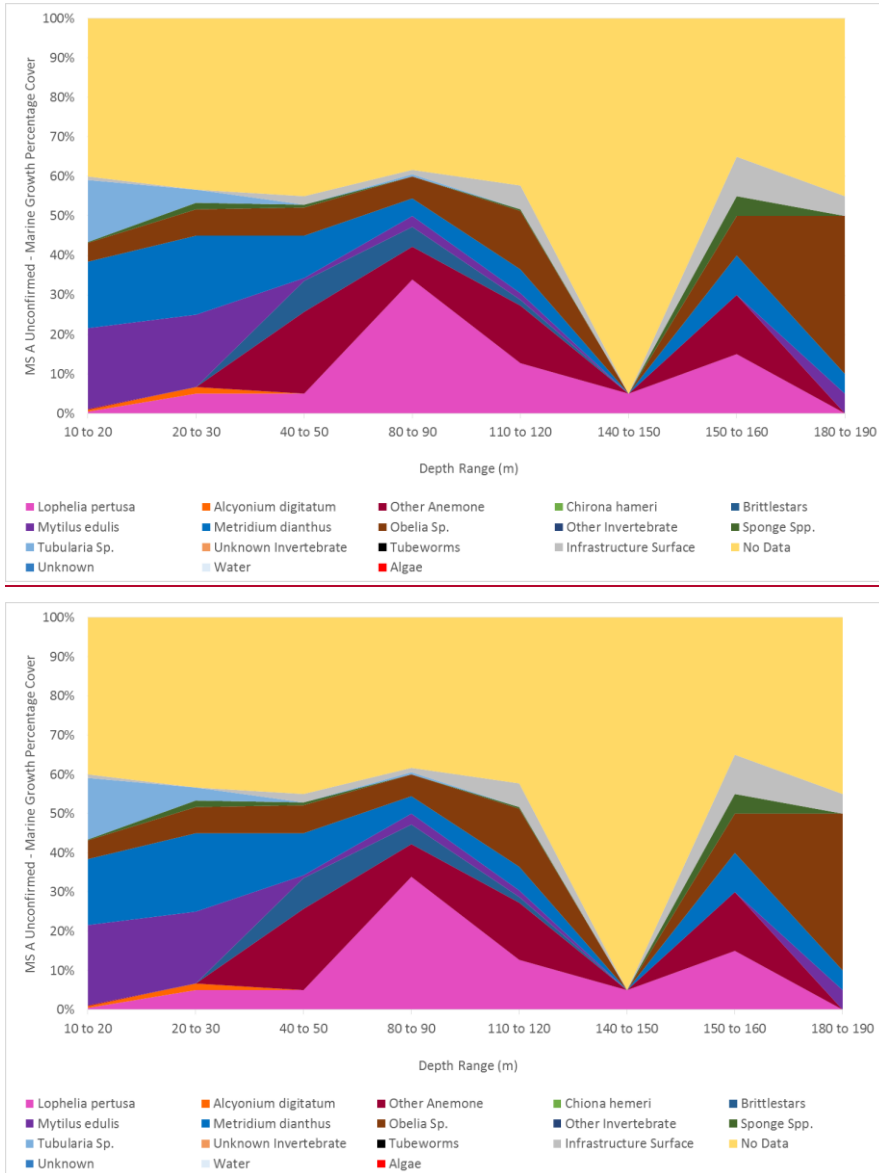


Figure S11: Percentage cover per species by depth range for PlatMS A Unconfirmed

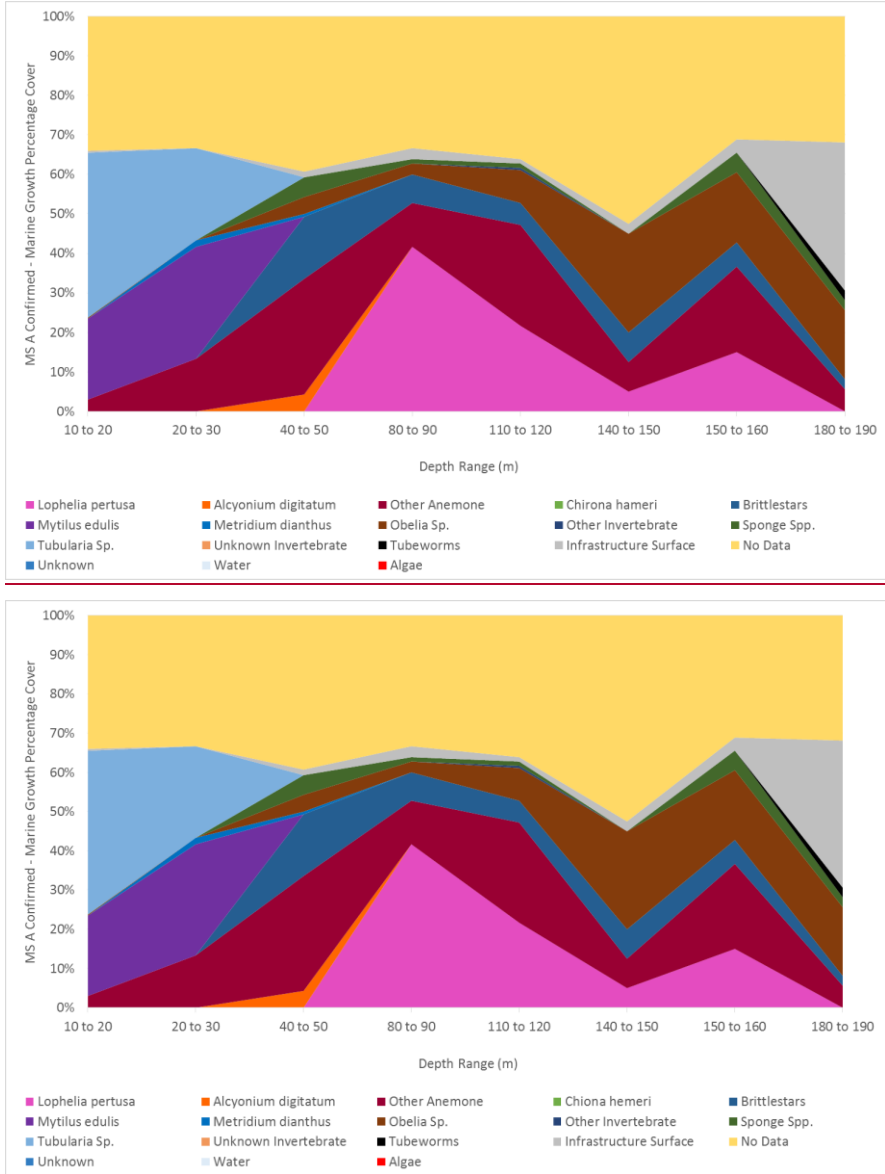


Figure S12: Percentage cover per species by depth range for PlatMS A Confirmed

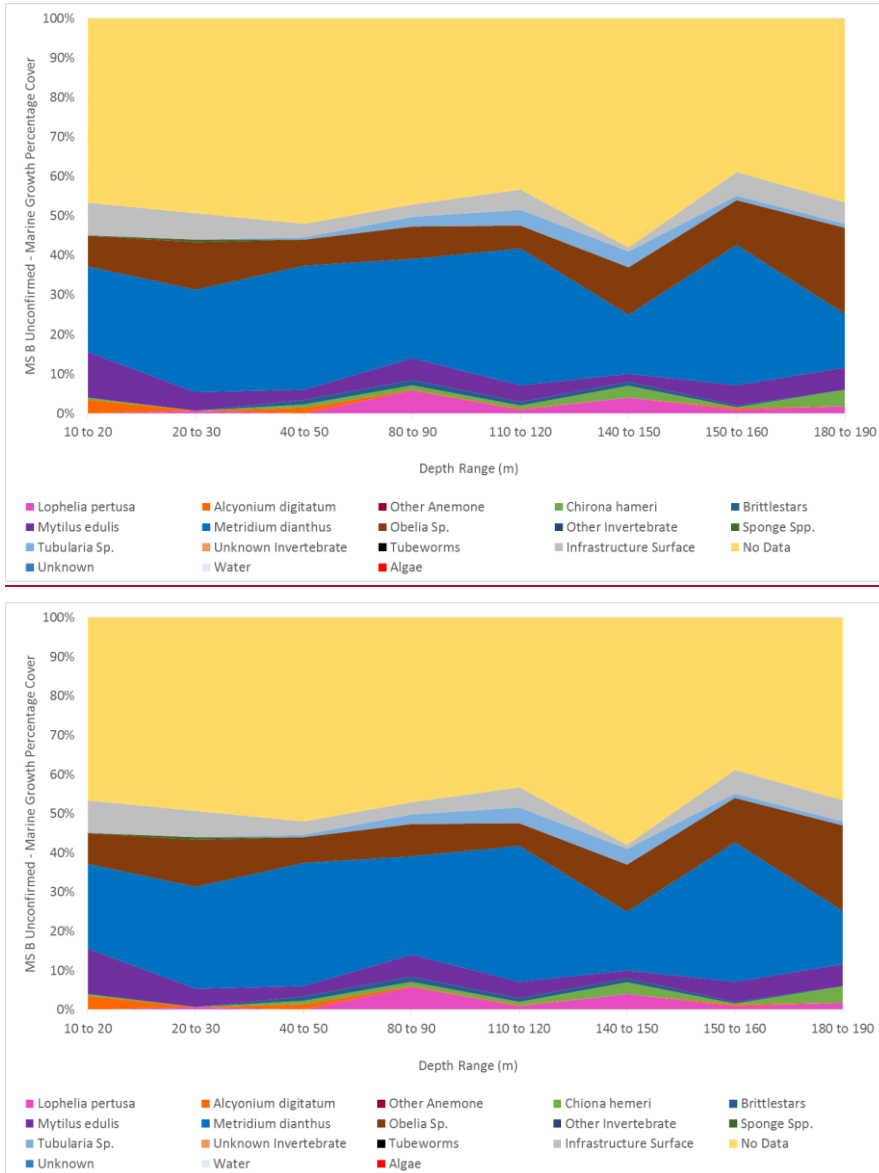


Figure S13: Percentage cover per species by depth range for PlatMS B Unconfirmed

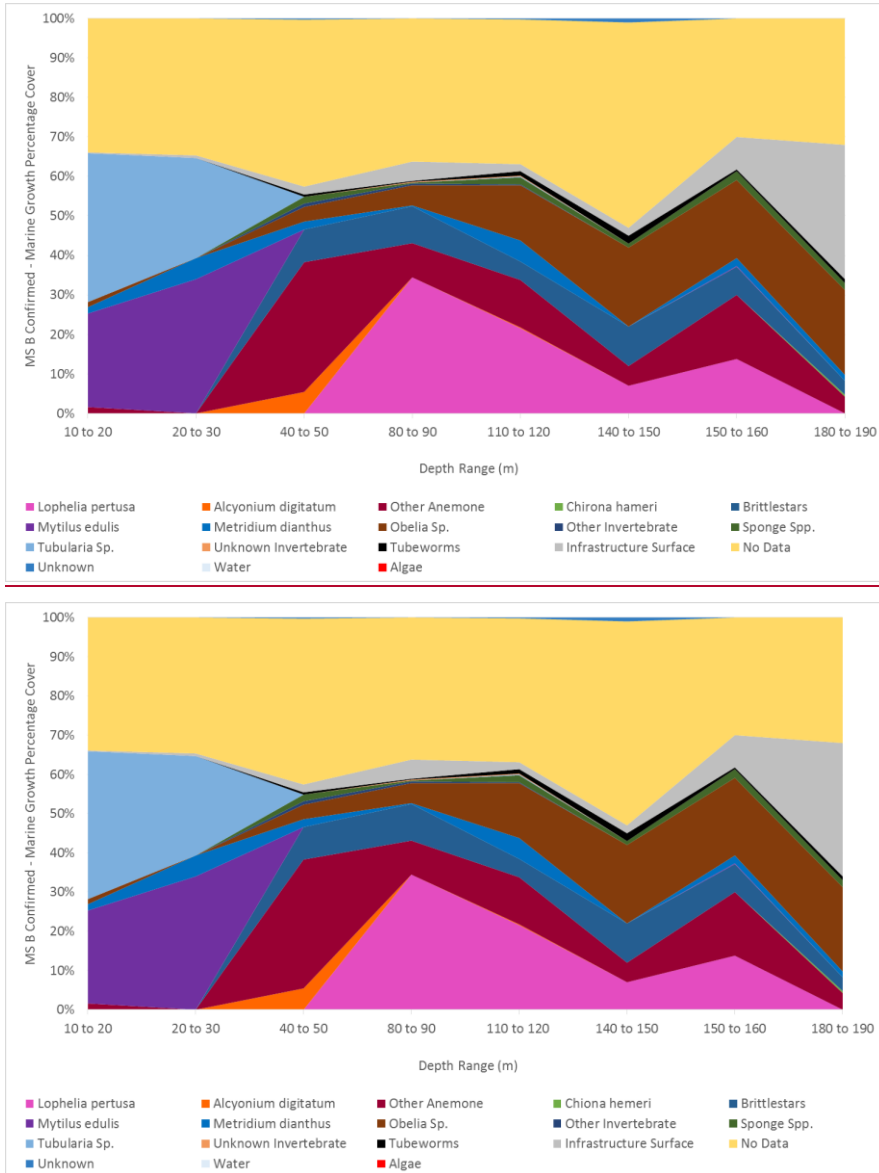


Figure S14: Percentage cover per species by depth range for PlatMS B Confirmed

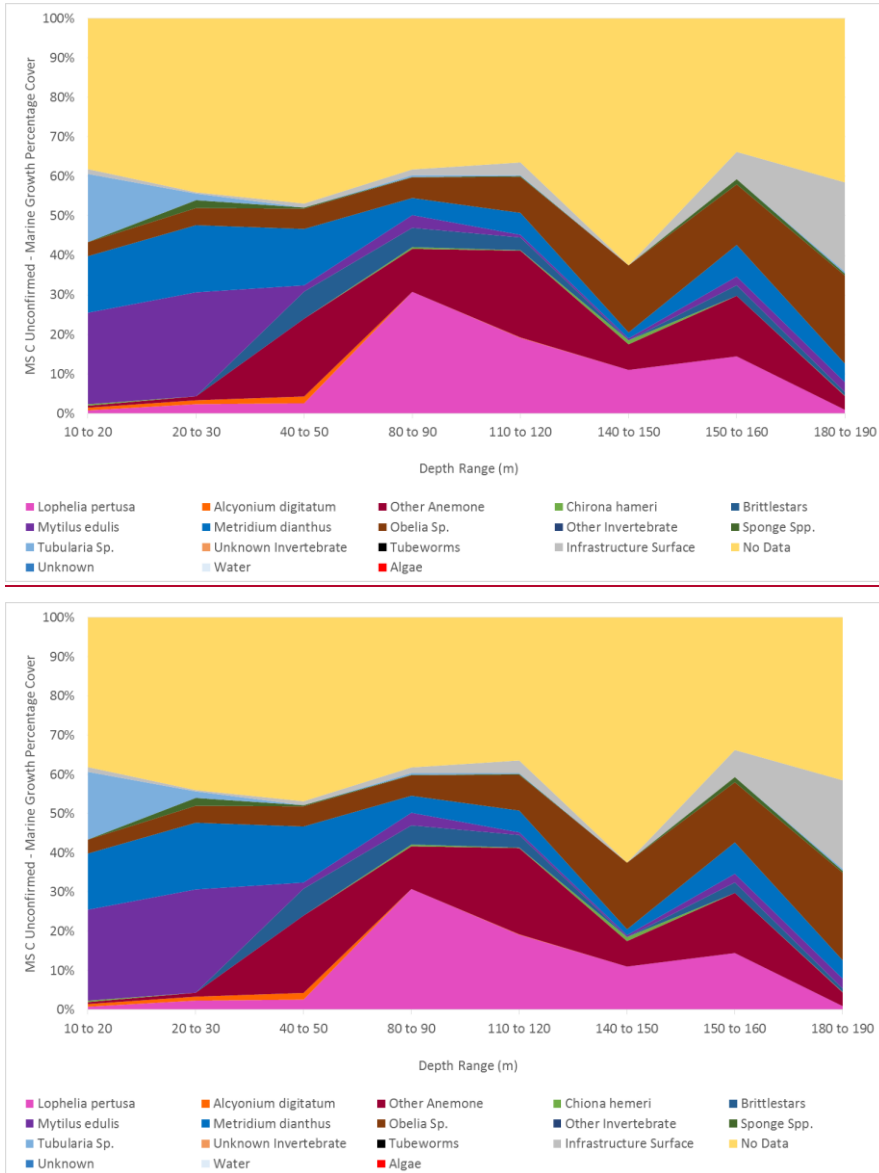


Figure S15: Percentage cover per species by depth range for PlatMS C Unconfirmed

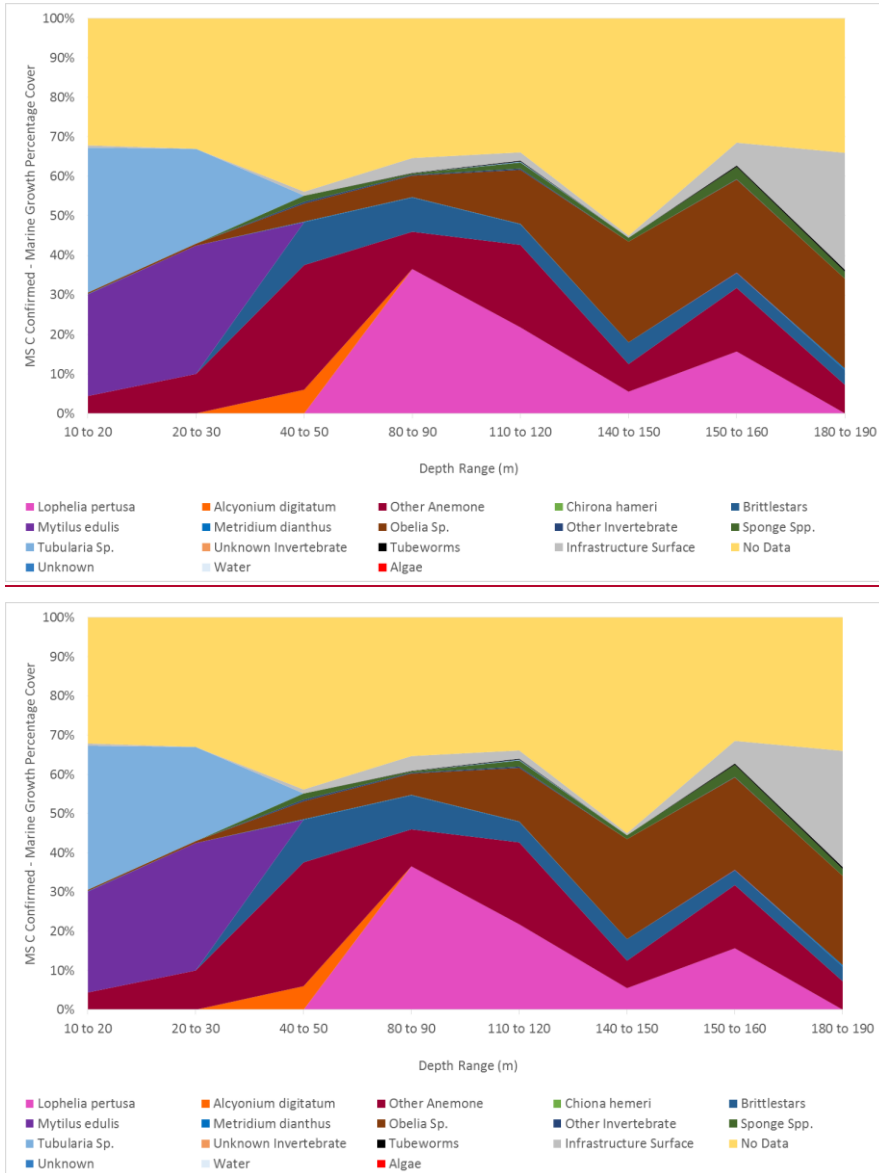


Figure S15: Percentage cover per species by depth range for PlatMS C Confirmed

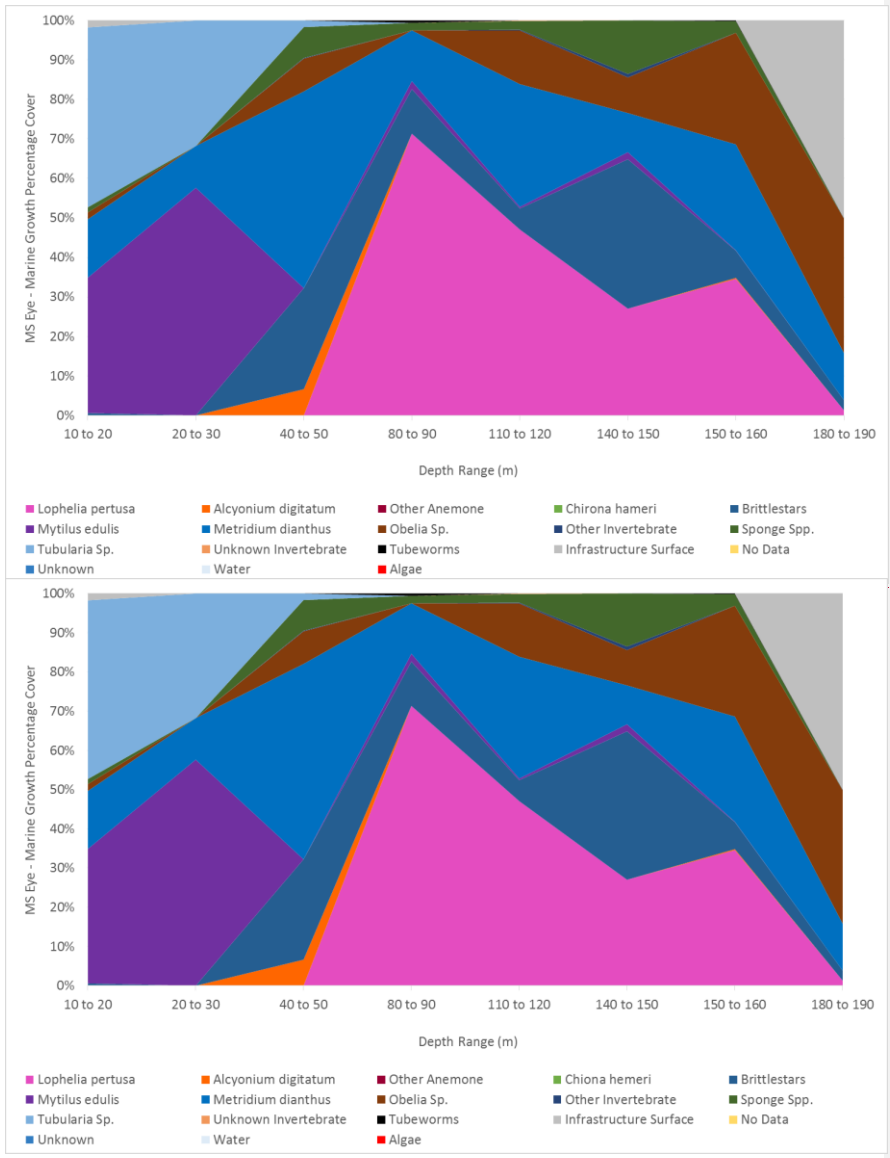


Figure S17: Percentage cover per species by depth range for PlatMS Manual