

Supplementary Material for the article entitled ***“Key environmental factors controlling planktonic foraminiferal and pteropod community’s response to Late Quaternary hydroclimate changes in the south Aegean Sea (eastern Mediterranean)”***

Christina Giamali *, George Kontakiotis *, Efterpi Koskeridou, Chryssanthi Ioakim and Assimina Antonarakou

Table S1. PCA scores based on planktonic foraminifera raw data

Samples	Axis 1	Axis 2	Axis 3
6	-4,313	-32,788	7,7202
14,5	-4,6598	-21,319	-1,5572
28	4,7154	-0,9131	-10,602
34	0,33655	-9,6357	0,80457
41,5	-8,7796	-14,322	2,7492
50,25	-11,724	10,724	-16,386
61	-10,958	-0,97797	-8,7426
61,5	-6,6687	1,8289	-13,592
62,5	0,83907	3,1257	-10,504
63,5	-0,9787	0,24503	-11,976
64,5	-5,8061	-1,8065	-7,2853
65,5	-16,064	1,9687	-2,673
66,5	-14,24	-0,30718	-2,3585
67,5	-14,14	-1,864	-2,5151
68,5	-13,489	-6,4413	3,2783
69,5	-16,752	4,4395	-3,2061
70,5	-15,422	-10,268	4,4148
71,5	-26,902	20,453	4,2837

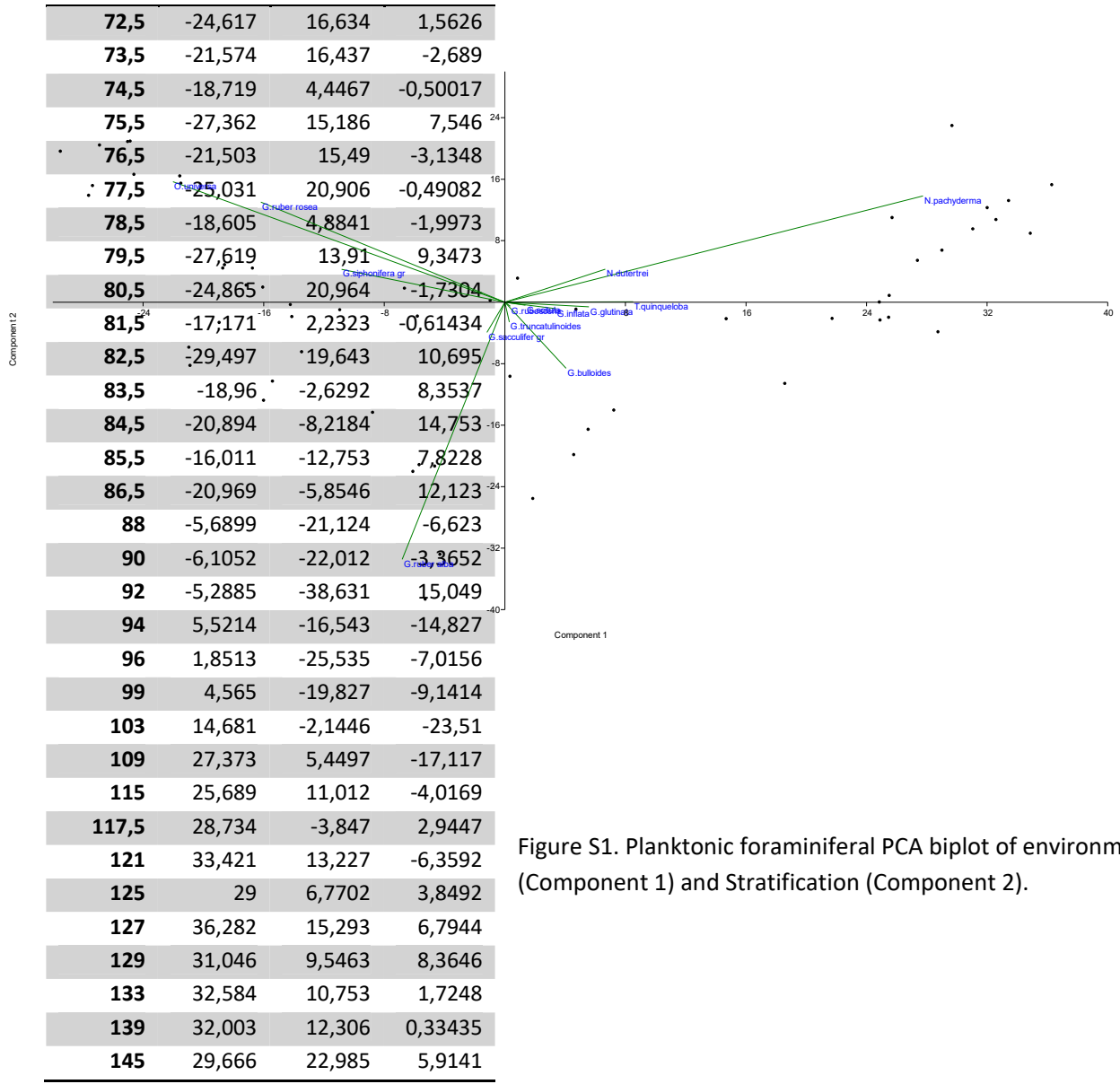


Figure S1. Planktonic foraminiferal PCA biplot of environmental factors of Temperature (Component 1) and Stratification (Component 2).

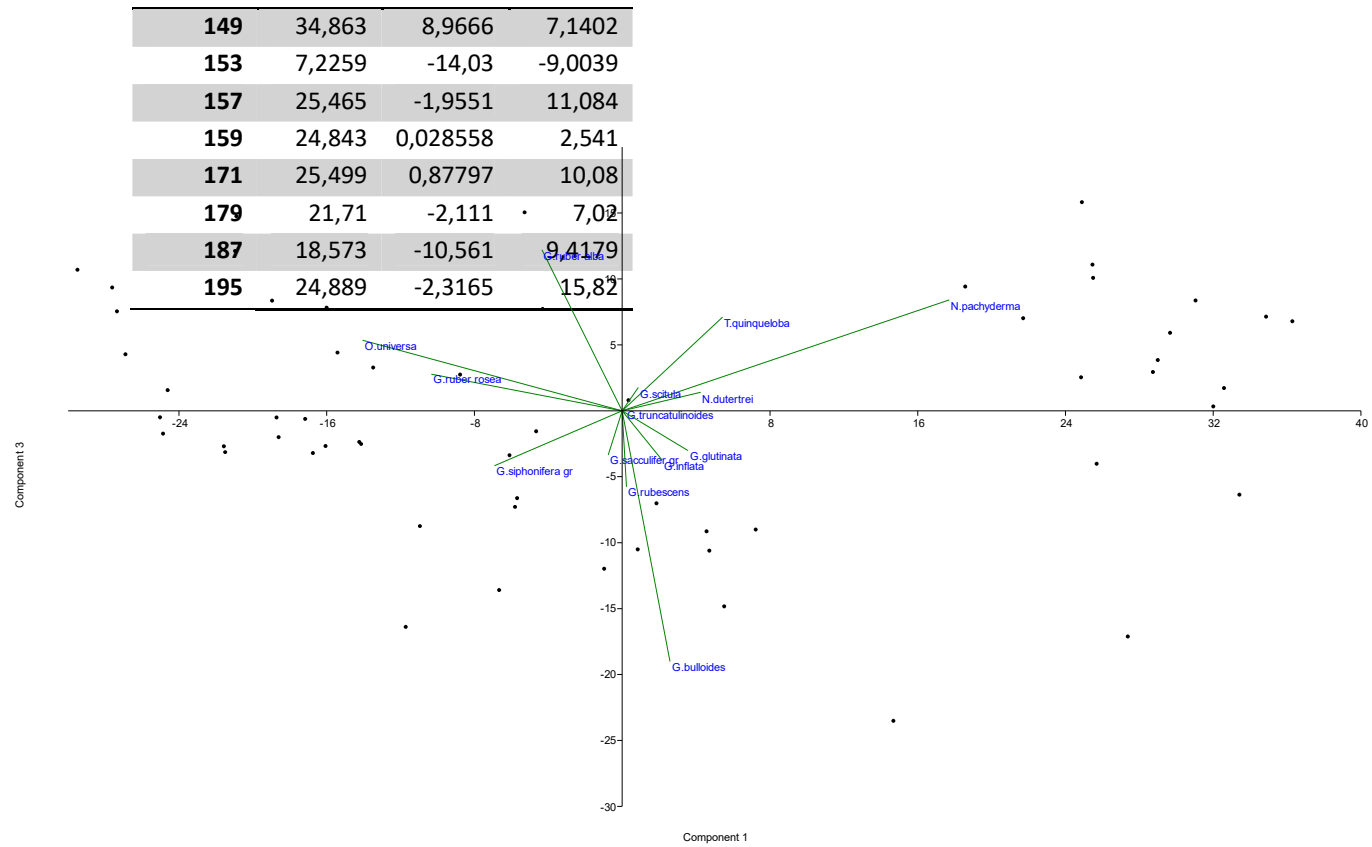


Figure S2. Planktonic foraminiferal PCA biplot of environmental factors of Temperature (Component 1) and Seasonality (Component 3).

Table S2. PCA scores based on pteropods raw data.

Samples	Axis 1	Axis 2	Axis 3
6	-18,936	16,996	4,6108
14,5	-22,155	25,367	8,9292
28	-16,41	-28,898	11,671
34	-13,718	-36,056	9,2887
41,5	-38,734	55,047	28,329
50,25	-16,924	-38,646	15,482
61	-12,375	-10,338	-3,6428
61,5	-12,896	-8,6204	-1,0049
62,5	-20,467	-8,8181	12,877
63,5	-14,734	1,822	-0,56054
64,5	-13,885	-12,637	1,2718
65,5	-25,096	15,49	15,109
66,5	-21,755	4,962	10,401
67,5	-18,2	-1,449	6,1824
68,5	-14,234	-2,4314	-0,59249
69,5	-15,726	-4,6745	1,9558
70,5	-17,87	-5,0881	6,4613
71,5	-15,011	-9,3514	1,2569
72,5	-15,18	-8,3629	3,1314
73,5	-17,971	-4,0507	6,2758
74,5	-18,994	-6,5161	8,7546
75,5	-21,737	-0,0933	9,7452
76,5	-15,426	-13,695	-1,1804
77,5	-20,751	-0,19095	8,7274
78,5	-19,782	-10,961	12,558
79,5	-20,149	-7,5799	13,125
80,5	-19,515	-3,0617	9,9163
81,5	-14,469	-3,6724	2,714
82,5	-20,781	8,7226	9,9909

83,5	-19,946	20,832	-2,2077
84,5	-21,329	-21,39	18,763
85,5	-16,515	-42,584	14,032
86,5	-21,958	11,949	0,55054
88	-17,915	14,344	-9,8801
90	-21,249	23,838	-3,2687
92	-15,747	16,301	-18,681
94	-14,039	13,863	-27,137
96	-10,986	7,0355	-22,828
99	-13,165	10,2	-23,054
103	-17,451	18,48	-11,289
109	6,2815	12,689	-6,8432
115	7,288	-4,4963	-29,101
117,5	-6,0663	3,1905	-22,116
121	-0,05319	-14,203	-16,935
125	-11,148	-2,881	-17,132
127	8,9703	-13,87	-37,839
129	12,55	34,346	22,397
133	12,584	4,1053	-19,147
139	24,324	5,8971	-14,964
145	32,488	-9,7567	-35,058
149	39,661	-7,6681	-21,947
153	76,071	0,21093	2,0367
157	83,666	2,0098	9,1821
159	88,098	3,0236	13,03
171	88,096	3,0033	12,687
179	87,971	2,9772	12,613
187	86,384	2,5996	10,912
195	87,013	2,7407	11,438

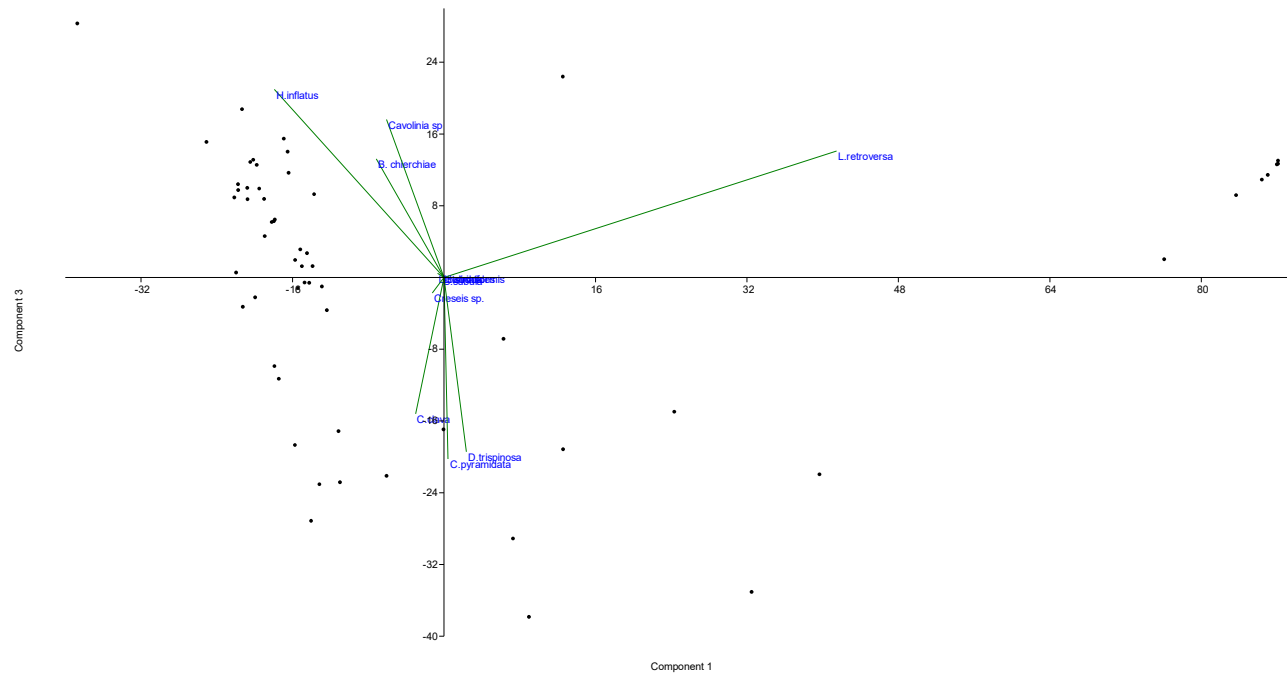


Figure S4. Pteropods PCA biplot of environmental factors of Temperature (Component 1) and Stratification (Component 3).