

Communication

# Enhanced Interface Structure and Properties of Titanium Carbonitride-Based Cermets with the Extra Solid Phase Reaction

## Supplementary Materials

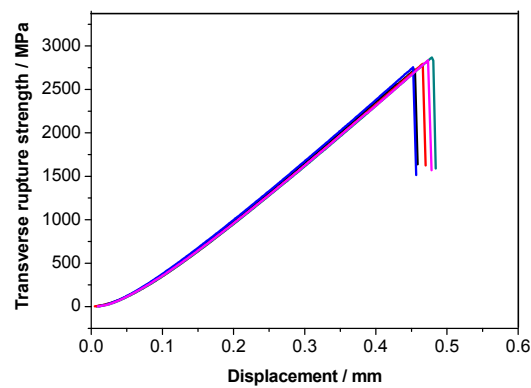


Figure S1. The curve of transverse rupture strength for cermets prepared by the extra solid phase reaction.

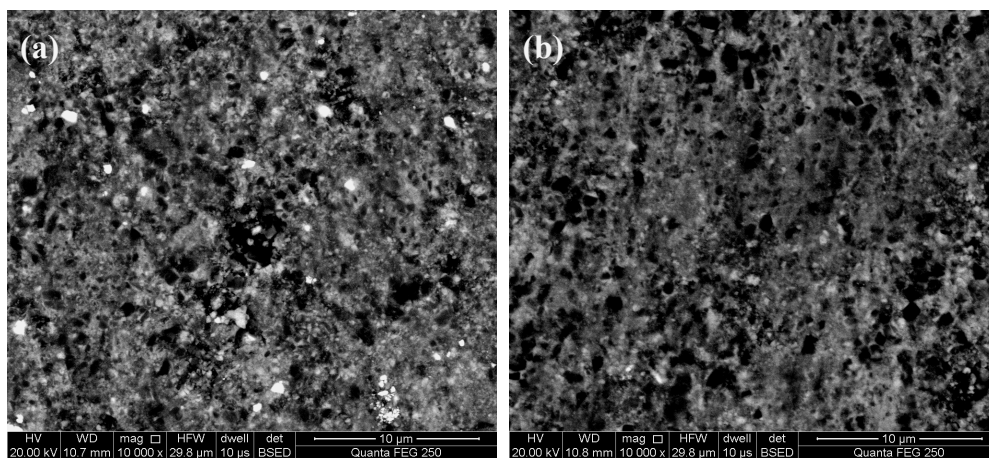
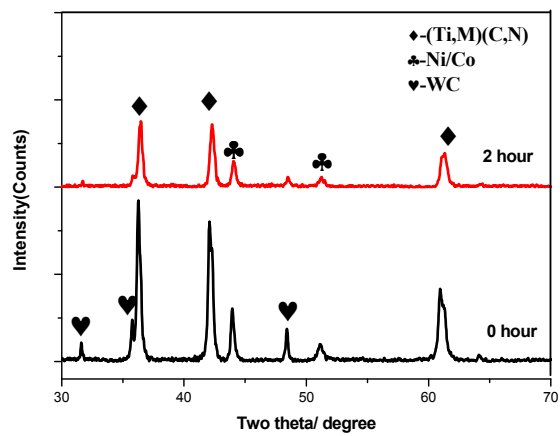


Figure S2. SEM micrographs of microstructure in Ti(C,N)-based cermets sintered at 1300 °C for 0 h (a) and 2 h (b).



**Figure S3.** XRD patterns of Ti(C,N)-based cermets sintered at 1300 °C for 0 h and 2 h.