



*medicina*



Article

---

# Opportunities of Amlodipine as a Potential Candidate in the Evaluation of Drug Compliance during Antihypertensive Therapy

---

Dmitrijs Kustovs, Inga Urtāne, Eduards Sevostjanovs, Eva Moreino and Kārlis Trušinskis

Special Issue

Hypertension and Related Cardiovascular Diseases: From Experimental and Clinical Correlation to Management and Treatment

Edited by  
Dr. Christina Antza



<https://doi.org/10.3390/medicina59020340>

## Article

# Opportunities of Amlodipine as a Potential Candidate in the Evaluation of Drug Compliance during Antihypertensive Therapy

Dmitrijs Kustovs <sup>1,\*</sup> , Inga Urtāne <sup>1</sup> , Eduards Sevostjanovs <sup>2</sup>, Eva Moreino <sup>3</sup> and Kārlis Trušinskis <sup>3</sup><sup>1</sup> Department of Pharmaceutical Chemistry, Riga Stradiņš University, LV-1007 Riga, Latvia<sup>2</sup> Laboratory of Physical Organic Chemistry, Latvian Institute of Organic Synthesis, LV-1006 Riga, Latvia<sup>3</sup> Department of Internal Disease, Riga Stradiņš University, LV-1007 Riga, Latvia

\* Correspondence: dmitrijs.kustovs@rsu.lv; Tel.: +371-26838461

**Abstract:** *Background and Objectives:* Blood pressure measurement is essential evidence to establish that the chosen medicine and dosage are appropriate, and also indirectly indicates whether the medicine is being used at all. Therefore, current research compares adherence to the target blood pressure at home and in the hospital between different age groups, using similar combinations of the drugs prescribed by the doctor within ongoing antihypertensive therapy. Moreover, it is very important to develop a method for the determination of amlodipine and its metabolite, which would be suitable for clinical applications, when the result is needed as quick as possible. *Materials and Methods:* This prospective study included patients aged  $\geq 18$  years who were diagnosed with hypertension. Subjects were divided into two age groups according to European Society of Cardiology (ESC) hypertension guidelines; older patients ( $\geq 65$  years) and adult patients ( $< 65$  years). Assessment of adherence rate to antihypertensive medications was performed using a measurement of systolic blood pressure and comparing this to ESC hypertension guideline data. A simple liquid chromatography-tandem mass spectrometer (LC-MS/MS) method for determination of amlodipine and dehydroamlodipine was developed and validated according to the European Medicines Agency guideline on bioanalytical method validation at the Latvian Institute of Organic Synthesis. *Results:* A total of 81 patients with arterial hypertension were enrolled in this study. A significant number of patients were overweight ( $N = 33, 40.7\%$ ) and obese ( $N = 36, 44.4\%$ ). To control arterial hypertension, 70 (86.4%) patients used fixed-dose combinations, where one of the components was amlodipine. Practically, 36 (44.4%) hypertensive subjects were not able to comply with target blood pressure. Nonetheless, 38 (46.9%) patients who received fixed-dose combinations were able to comply with target blood pressure. *Conclusions:* Adherence to ESC hypertension guideline proposed target blood pressure was relatively low among hypertensive subjects even though a significant number of patients were taking fixed-dose combinations. Therefore, optimizing prevention, recognition, and care of hypertensive young adults require intensive educational interventions. Moreover, survey data suggest that therapeutic drug monitoring using the validated simple, sensitive LC-MS/MS method is pivotal for further understanding factors influencing adherence.

**Keywords:** amlodipine; dehydro-amlodipine; adherence; hypertension; drug monitoring

**Citation:** Kustovs, D.; Urtāne, I.; Sevostjanovs, E.; Moreino, E.; Trušinskis, K. Opportunities of Amlodipine as a Potential Candidate in the Evaluation of Drug Compliance during Antihypertensive Therapy. *Medicina* **2023**, *59*, 340. <https://doi.org/10.3390/medicina59020340>

Academic Editor: Christina Antza

Received: 17 January 2023

Revised: 6 February 2023

Accepted: 7 February 2023

Published: 10 February 2023



**Copyright:** © 2023 by the authors. Licensee MDPI, Basel, Switzerland. This article is an open access article distributed under the terms and conditions of the Creative Commons Attribution (CC BY) license (<https://creativecommons.org/licenses/by/4.0/>).

## 1. Introduction

The prevalence of hypertension continues to rise, making it a leading global health issue. In 2019, the prevalence of hypertension was 34% in men and 32% in women aged 30–79. Hypertension has been identified as a risk factor for the 8.5 million deaths resulting from renal diseases, ischemic heart disease, stroke, and other vascular diseases [1]. The high prevalence and mortality rates associated with hypertension have led to increased research and highly potent drugs. Despite significant advances in the diagnosis and

treatment of arterial hypertension, the condition continues to pose a serious medical, social, and economic burden. Blood pressure control, which is the main goal of antihypertensive treatment, cannot be achieved with effective medication alone, but also requires cooperation with the patient [2]. Most patients require a combination of two or even three medicines to control their blood pressure within the recommended range. Therefore, such a complex antihypertensive regimen may require multiple medications to be administered several times during the day [3].

In turn, the use of multiple drugs and the possibility of the development of side effects reduces the patient's adherence and causes further cardiovascular complications.

According to the European Society of Cardiology (ESC) hypertension guideline, amlodipine (AML) often predominates as initial treatment as a single tablet or as a component of a fixed-dose combination (FDC) [4]. The drug is administered orally once daily in different dosages such as 2.5 mg, 5 mg and 10 mg tablets. The half-life of AML is 30–50 h, which is the longest compared to other dihydropyridine medications [5]. Although the many benefits of the drug, it may cause lower-extremity edema, which could make it necessary to change its dosage, become distressing to the patients or even cause patient self-managed medication discontinuation hindering adherence to the therapy. Thus, in most cases AML is administered in FDC with other antihypertensives to increase its efficacy and minimize possibility of adverse effects [6,7]. AML undergoes hepatic metabolism facilitated by cytochrome P450 enzymes (CYP). The metabolism converts AML into inactive metabolites such as a pyridine derivative. Metabolism of AML to dehydroamlodipine (DAML) is an NADPH-dependent reaction that involves the CYP3A4 enzyme [8]. Therefore, measuring the plasma concentration of DAML can help determine the successful metabolism of the drug, which correlates with its efficacy in managing high blood pressure.

Regardless of the medication prescribed, it is important that the patient is adherent and has regular blood pressure monitoring. A low level of adherence in chronic conditions is associated with poor outcomes and an additional burden on the healthcare systems [9–11]. A high level of adherence is essential for the management of chronic conditions and the effectiveness of prescribed therapies.

Furthermore, people believe that arterial blood pressure gradually increases during aging over time, hence is a normal condition of the body. However, ESC hypertension guidelines endorsed optimal blood pressure <130/80 mm Hg at the age <65 years, and 140/90 mm Hg for individuals older than 65 years. Likewise, ESC hypertension guideline outlines benefits of home blood pressure monitoring, where white-coat and masked hypertension can be identified because measurement in a home setting may be more relaxed than the doctor's office [4]. In addition, home blood pressure monitoring has stronger prognostic significance when compared with ambulatory blood pressure measurement along with being widely available and can be integrated into a normal daily routine. However, recent data show that accuracy of home blood pressure monitoring devices remains a limiting factor, where only 30% of the devices have acceptable validation [12]. Thus, assessment of home and ambulatory blood pressure data are an important procedure to evaluate and exclude previously mentioned factors and slow down the growing burden of hypertension.

## 2. Materials and Methods

### 2.1. Study Subjects

This study was an observational, descriptive study that was conducted at Pauls Stradiņš Clinical University Hospital in Latvia. Written informed consent was obtained from all subjects prior to participation and after nature of the study was explained and all questions regarding the study were answered. Subject data were collected through a face-to-face survey during the period of 1 March 2020 to 31 June 2021. The selection criteria were: subject age over 18 years, a patient must be diagnosed with arterial hypertension (primary or secondary) independently of their risk factors, and must take AML for at least six months. The exclusion criteria was severe hepatic impairment. A questionnaire was used to collect environmental and lifestyle data. Seated blood pressure was measured three times using an

automated blood pressure device (Diagnostic DM-400 IHB, Diagnosis, Białystok, Poland) following a manual procedure of blood pressure measurement. According to the 2018 ESC hypertension guidelines, it is recommended that older patients ( $\geq 65$  years) and adult patients ( $< 65$  years) target blood pressure should be  $< 140/90$  mmHg and  $< 130/80$  mmHg, respectively [4]. Subjects were divided into two age groups conforming to hypertension practice guidelines. Ethical approval for this study was obtained from the Riga Stradiņš University Ethics Committee on 27 February 2020 (approval ref: 6-1/02/63). Participation in the study was voluntary. The data were collected and processed in accordance with the General Data Protection Regulation (GDPR) 2016/679 on the protection of natural persons with regard to the processing of personal data.

## 2.2. Statistical Methods

Quantitative variables were described with arithmetical mean and standard deviation (SD) or median and the first (Q1) and third (Q3) quartiles, if data were not normally distributed. The independent samples *t*-test was used to test the difference in age between gender, as data were normally distributed and homogenous as assessed using the Shapiro-Wilk test with normal Q-Q plots and Levene's test, respectively. The difference of dose of amlodipine between age groups was tested using the Mann-Whitney U test, because data were not normally distributed. Categorical or qualitative variables were characterized as number and percentage. Categorical variables were compared with Pearson  $\chi^2$  test or Fisher exact test, depending on the violation or satisfaction of the assumption. The statistical analyzes were performed using SPSS 26 (IBM, Chicago, IL, USA) and G\*Power 3.1.9. software (Heinrich Heine Universität Düsseldorf, Düsseldorf, Germany). Differences were considered statistically significant at  $p < 0.05$ .

## 2.3. Method Validation

The analytical method was developed and validated according to the European Medicines Agency (EMA) guideline on bioanalytical method validation [13]. Validation of AML and DAML is described in Appendix A.

## 3. Results

### 3.1. Results from Participant Surveys

A total of 81 patients with hypertension were enrolled in this study. The core task was to establish a target population of patients with possible changes in drug compliance despite the wide range of FDC combinations and in whom it would be useful to determine the concentration of amlodipine in the blood in the case of continuous use of the antihypertensive medication. The mean age of the population was  $66.6 \pm 9.1$  years between 45 to 87. The average age difference between the genders was statistically significant—for men  $64.6 \pm 9.2$  years and women  $69.8 \pm 8.0$  years ( $t = 2.604$ ,  $df = 79$ ,  $p = 0.011$ ,  $d = 0.60$  (medium effect size), power = 0.86). All subjects had been taking AML for at least six months. Characteristics of participants and their AML therapy are shown in Table 1.

**Table 1.** Characteristics of study participants.

Characteristics	Value
Women, <i>n</i> (%)	31 (38.7)
Men, <i>n</i> (%)	50 (61.7)
Mean age, years $\pm$ SD:	66.6 $\pm$ 9.1
• women	69.8 $\pm$ 8.0

Table 1. Cont.

Characteristics	Value
• men	64.6 ± 9.2
Antihypertensive drug combination containing AML, n (%)	
• single	11 (13.6)
• double	40 (49.4)
• triple	30 (37.0)
Dose of AML (mg), n (%)	
• 2.5	7 (8.6)
• 5	50 (61.7)
• 10	24 (30.9)

To control arterial blood pressure, 40 (49.4%) and 30 (37.0%) patients used two and three-drug antihypertensive FDCs, where one of the active pharmaceutical ingredients was amlodipine, more often at a dose of 5 mg. Despite widespread use of FDCs, the average dose of amlodipine in patients over 65 years of age was higher; in patients under 65 years of age the dose of amlodipine was  $5.4 \pm 2.3$  mg (median = 5, Q1–Q3 5–5) and in patients over 65 years of age the dose of amlodipine was  $6.9 \pm 2.6$  mg (median = 5, Q1–Q3 5–10) ( $U = 555$ ,  $p = 0.005$ ,  $r = 0.32$  (medium effect size), power = 0.86). In order to evaluate answers regarding the regular use of the medicine, the average blood pressure values at home were compared to patient's measured blood pressure in the hospital (see Table 2).

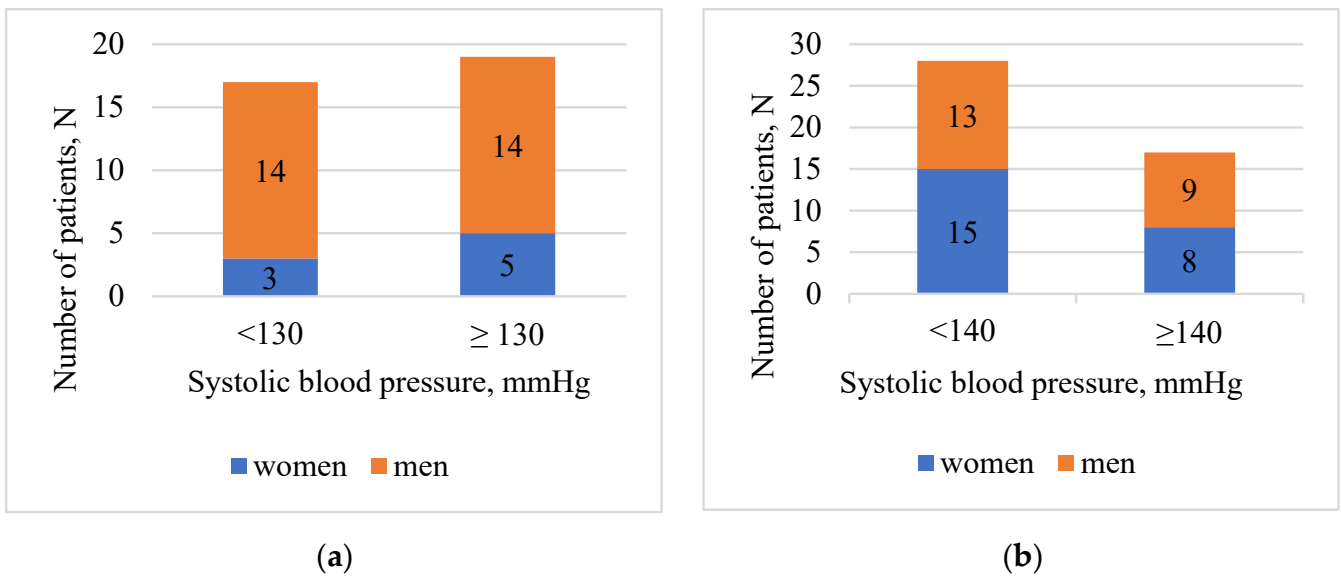
Findings showed that 32 (39.5%) subjects among all 36 (44.4%) hypertensive patients, were receiving FDC antihypertensive medications, where one of the components was AML. Most of the patients, 69 (85.2%) were overweight or obese. According to hospital and home systolic blood pressure measurements, patients in age group <65 years (hospital—52.8%, home—54.8%) were more careless about their health, and less compliant to target blood pressure as patients in  $\geq 65$  years (hospital—37.8%, home—26.7%) group. Furthermore, patients in age group  $\geq 65$  years were more often reaching target diastolic blood pressure (hospital—80.0%, home—97.7%). In addition, 16 (19.8%) patients confirmed that used to forget to take their medicines as prescribed by a doctor. In Figure 1 patients were divided into two groups: <65 years (a) and  $\geq 65$  years (b) according to gender. Each group was split into two subgroups according to hypertension guideline recommendations for target blood pressure values.

**Table 2.** Systolic (SBP), Diastolic (DBP) blood pressure at home and in hospital, body mass index (BMI) and medication use habits according to the age group.

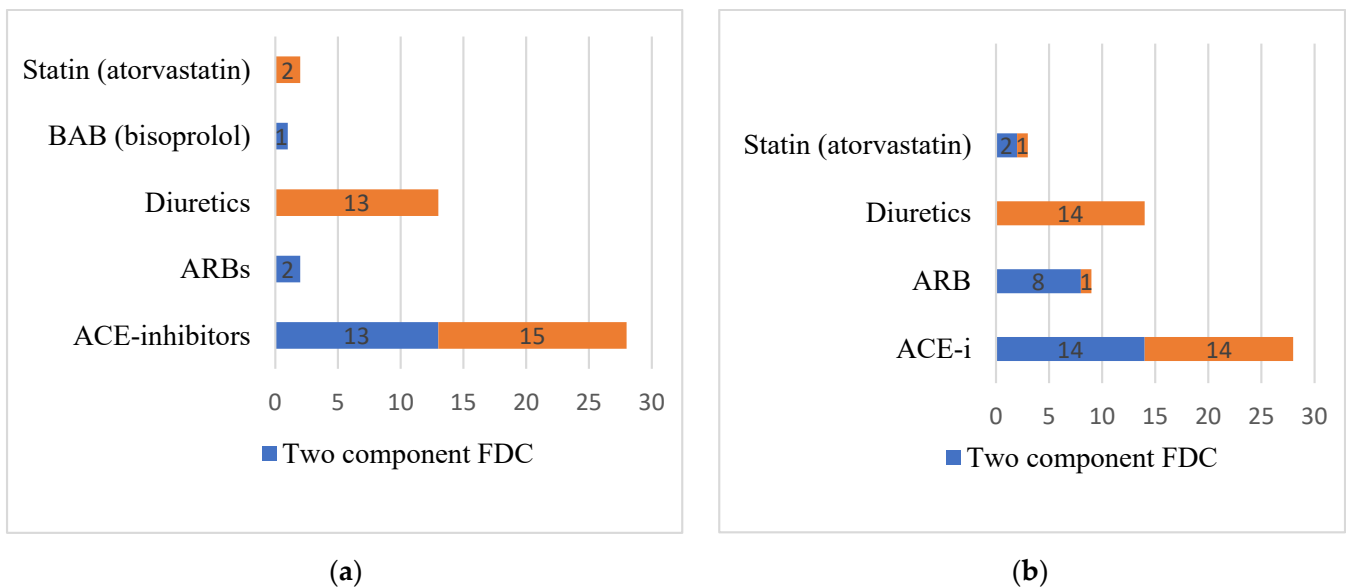
Results		Age Group		
		<65 Years (%)	≥65 Years (%)	
Total		36	45	
Female		8 (22.2)	23 (51.1)	
Male		28 (77.8)	22 (48.9)	
BMI, kg/m <sup>2</sup>	Women	18.5–24.99	0 (0)	1 (2.2)
		>25–29.99	4 (11.1)	10 (22.2)
		≥30	4 (11.1)	12 (26.7)
	Men	18.5–24.99	5 (13.9)	6 (13.3)
		>25–29.99	11 (30.6)	8 (2.2)
		≥30	12 (33.3)	8 (17.8)
Respondents that reached target SBP (measurement in hospital)		17 (47.2)	28 (62.2)	
Respondents that reached target SBP (measurement at home *)		14 (38.8)	32 (71.1)	
Respondents that reached target DBP (measurement in hospital)		14 (38.9)	36 (80.0)	
Respondents that reached target DBP (measurement at home *)		11 (35.5)	43 (97.7)	
AML formulations of patients with reached target SBP (<130 mm Hg at the age <65 years; <140 mm Hg at the age ≥65)	Single	3 (8.3)	4 (8.9)	
	Two component FDC	7 (19.4)	17 (37.8)	
	Three component FDC	7 (19.4)	7 (15.6)	
Respondents that failed to reach target SYS blood pressure (measurement in hospital)		19 (52.8)	17 (37.8)	
Respondents that failed to reach target SYS blood pressure (measurement at home *)		17 (54.8)	12 (26.7)	
Respondents that failed to reach target DBP (measurement in hospital)		22 (61.1)	9 (20.0)	
Respondents that failed to reach target DBP (measurement at home *)		20 (64.5)	1 (2.3)	
AML formulations of patients with non-reached target SBP (>130 mm Hg at the age <65 years; >140 mm Hg at the age ≥65)	Single	2 (5.6)	2 (4.4)	
	Two component FDC	9 (25.0)	7 (15.6)	
	Three component FDC	8 (22.2)	8 (17.8)	
Respondents that forget to take hypertension medications	Women	2 (5.6)	7 (15.6)	
	Men	14 (38.9)	8 (17.8)	

\* Five respondents (women—2, men—3) in <65 and one respondent (women—1) in ≥65 years group were not able to verify their home blood pressure measurements.

Data in Figure 1 represents that men without regard to age group, <65 or ≥65 years, have more often failed to reach their target blood pressure, 14 and 9, respectively. Furthermore, men in both age groups (N = 22, 27.2%) self-reported that they used to forget to take their antihypertensive medications more often compared to women (N = 9, 11.1%). Data in Figure 2 represent that most commonly seen pharmacological groups in double and triple FDCs in both age groups <65 or ≥65 years, are ACE-inhibitors and diuretics agents.



**Figure 1.** Hospital systolic blood pressure depending on the target blood pressure in the relevant age group. (a) Age group <65 years. (b) Age group ≥65 years.



**Figure 2.** Pharmacological groups used by patients in FDC with the amlodipine. (a) Age group <65 years. (b) Age group ≥65 years.

3.2. Results of AML and DAML Validation

Results of AML and DAML validation described in Appendix A.

4. Discussion

As comorbidities and the number of simultaneously used drugs increases with age, FDC is a major solution to improve compliance during arterial hypertension therapy and a tool to reach target blood pressure. Despite the simplified treatment regimen using FDCs, however, individual patient factors tend to influence the use of the drug. Even so, Shuangjiao et al. reported that medication literacy has a positive relationship with medication adherence. Therefore, adequate knowledge obtained from clinical professionals as well as community pharmacists, would improve patient attitude, behavior and adherence to medication therapy toward hypertension treatment [14].

Comparing the results with other studies will help understand the position of different authors regarding the adherence to target systolic blood pressure by comparing the variables such as age or age group, gender, and risks such as being overweight or obese.

Various authors have explored the relationship between adherence to antihypertensive medication and subgroups. For instance, the results of the current study paralleled Fleig et al., where the authors explored the effect of FDC of perindopril or amlodipine among patients with arterial hypertension. The researchers demonstrated that 80.6% of the patients treated with FDCs of perindopril/amlodipine were either overweight (BMI >25 and <30 kg/m<sup>2</sup>, 46.8%) or obese (BMI >30 kg/m<sup>2</sup>, 33.8%). Studies recorded similar patient characteristics when compared to the current study, which recorded 85.2% obese cases. Fleig et al. demonstrated that patient age could not influence blood pressure response. The outcome established that 70.6% of patients <65 years attained blood pressure values of <140/90 mm Hg compared to 66.3% among patients ≥65 years [15]. Similar results were also observed in the study by Pallangyo et al. that showed groups of ≤60 vs. >60 years displaying similar adherence of 76.8% vs. 77.1%, respectively [16]. This is inconsistent with the current research that showed that most of the patients aged 65 years reached their SBP target compared to the subgroup of <65 years. In this study, the sub-group of <65 years of age recorded a significant decrease in blood pressure, and a similar outcome was observed in patients 65 years and older. Finally, the authors assessed adherence to medication and found that 47.2% of patients showed perfect adherence to treatment, and adherence increased by 20.6% among previously treated patients, while 51.7% of patients without antihypertensive treatment showed perfect adherence [15]. Verma et al. conducted an on-treatment analysis to determine adherence among FDC therapy and multi-pill combination therapy and found no statistical difference in primary and secondary outcomes [17]. However, the intention-to-treat analysis demonstrated high adherence among the FDC group compared to the multi-pill group (70% vs. 42% of total days). Interestingly, other studies have revealed similar results compared to the current study. Choi et al. predicted medical adherence using regression analysis and established that subgroups of ≥65 years who were treated with antihypertensive drugs showed good adherence compared to the <65 years subgroup [18]. In another study, Sheppard et al. measured adherence to medications by testing the urine samples and conducting a statistical analysis to determine whether the blood pressure was controlled at <140/90 mm Hg among patients in the ≥ 65 years of age subgroup. Results from this study showed that a total of 182 participants, or 95.3% to 97.8%, were fully adherent to all of their antihypertensive medications [19]. Non-adherence to antihypertensive medication was generally low. Therefore, examining the relationship between the sub-groups and the desire to reach the target blood pressure revealed varied results compared to the current study.

Furthermore, Uchmanowicz et al. established that adherence to antihypertensive medications was also driven by other factors such as gender, marital status, and educational level. Thus, the authors utilized the Hill-Bone scale in testing the levels of adherence and showed that patients obtained an average of 12.05 points per question, corresponding to 1.34 points per question [20]. Males raised the 1.34 points compared to females. However, the results differed from the current study, which revealed that men often failed to reach their target SBP. Furthermore, Consolazio et al. demonstrated significant gender differences in the youngest age group, which showed that women appeared to be less commonly treated compared to men. However, women ≥ 65 years of age were treated more often than men [21]. Without considering the sub-group factor (<65 or ≥ 65 years), men recorded a significantly higher reduction in the SBP, while no significant reduction was observed in women. In other words, men were more compliant with antihypertensive therapy compared to women [22]. Conversely, Pallangyo et al. documented that males recorded similar adherence to females (75.6 vs. 77.6%) [16]. Furthermore, patients treated in primary care settings showed a significant reduction in SBP compared to patients treated in secondary and tertiary care settings. Hence, the current study agrees partially with the results from



other studies. While the current study disregards the role of subgroups, previous studies have revealed an important connection between age and gender.

The relationship between the challenge of forgetting and adherence to medications has been explored in various studies. In a qualitative study by Mostafavi et al. examining the barriers to medication adherence, the researchers developed four important themes, including the incompatibility of patients, environmental challenges of life, forgetting to take medications, and inefficient recommendations of family. The study demonstrated that forgetfulness was a barrier to medication adherence, and the challenge often occurs in the early stages of the disease [23]. Forgetfulness commonly occurs among patients taking only antihypertensive medications and at the onset of the diagnosis stage. Furthermore, Gavrilova et al. examined the adherence level to arterial hypertension and established that non-adherence to drug therapy occurred among 45.9% of the respondents. Thirty-six persons un-knowingly used the drug incorrectly, while 42 did it intentionally [24]. It was also established that the lowest adherence was recorded in patients taking medications for 2–4.9 years, but the adherence rate increased with increased hospitalization episodes. Differences in group adherence were controlled by factors such as net income, medical co-payment, employment, and the cost of treatment. Forgetfulness was also recorded among 38.3% of the patients and was considered a barrier to adherence [16]. While the current study established forgetfulness as a barrier to adherence, Gavrilova et al. found that some patients did it intentionally.

Due to the fact that this study was conducted during the COVID-19 era, it is important to examine how adherence changed during this period. Shimels et al. examined the magnitude of poor medication adherence among hypertensive and diabetic patients during the COVID-19 period. Shimels et al. noted that the magnitude of adherence to drug therapy was at 72%, when the patients failed to meet all the requirements [25]. Nearly 57% of the patients reported the impact of COVID-19 on the availability of medications, affordability, and follow-up visits. A cross-sectional study conducted during the COVID-19 pandemic established that the level of poor antihypertensive medication adherence was 63% and connected to several factors. Factors associated with poor medication adherence during COVID-19 were lack of formal education, existing comorbid conditions, poor knowledge about hypertension, poor patient-physician relationships, and unavailability of medication [26]. A study conducted in Turkey to assess blood pressure management and adherence to medication established that 58.7% had their blood pressure checked during the pandemic, while 15.5% changed their dosage or timing without doctors' approval [27]. In the study, 37.9% of patients were largely affected by the pandemic. Changes in medical adherence were impacted by failure to seek check-up services, fear of the pandemic, and impact on health.

In terms of clinical application, analysis of drug concentrations in blood serum is useful in detecting patient nonadherence to antihypertensive medication. Many recent studies found high rates of non-adherence to antihypertensive therapies which prompt simple and reliable monitoring of medication adherence with special attention to at-risk groups of patients [28–32]. Meantime, AML is the perfect first-line medicine available in a single fixed-dose combination form for different cardiovascular diseases with excellent pharmacokinetic parameters [33,34]. The large half-life period is perfect for TDM and assessment of adherence [35–37]. Regarding the assessment of amlodipine concentration in the serum, a number of methods to determine AML alone or in combination with other medications using LC-MS have been reported, but there is still scope for improvement [38–45]. Moreover, they do not detect DAML which is the principal metabolite in the AML metabolic dehydrogenation pathway. Quantification of the DAML using LC-MS/MS is crucial as it allows to understand metabolic rate of AML without implementing a separate analysis for the determination of cytochrome P450 metabolic activity. It is valuable to assess CYP metabolic activity during the pharmacotherapy, because CYP isozymes are involved in clinically important drug metabolisms. However, assessment of CYP metabolic activity is a time-consuming process in routine practice and inter-assay variability can lead to misin-

terpretation of the results [46,47]. Thus, LC-MS/MS analysis determining presence of the parent drug, its metabolite and both compound concentrations would be more informative in contrast to CYP metabolic activity process alone.

In the present manuscript, we have expanded the linearity range, which is approximately two times higher than those of most LC-MS/MS methods [39,40,42,44,45]. Improved dynamic range is an essential part of the quantification of drug response during personalized therapy. Moreover, sample preparation requires only 50 µL plasma, which is less than that in the published methods [39–42,44,45,48]; prepared using protein precipitation using a mixture of methanol-acetonitrile (3:1, *v/v*). Therefore, protein precipitation in the current procedure is low cost, requires minimal equipment, and a large number of samples can be prepared in a short time and the time or labor per sample is low during the daily routine.

## 5. Conclusions

Overall, the outcome of the current study established that nearby 50% of subjects did not achieve target values of systolic blood pressure and 85% of patients were overweight or obese. Moreover, the results agree partially with the results from other studies regarding adherence to antihypertensive medications. However, the current study disregards the role of subgroups, while previous studies have revealed an important connection between age and gender. Lastly, the age group <65 years reached target SBP and DBP in the hospital more often than at home, which was contrary to the patients in the age group ≥ 65 years. Moreover, further quantification of AML and its metabolite in patient plasma using the proposed simple, timesaving, highly sensitive validated LC-MS/MS method would help to unveil efficacy for improving blood pressure and patient outcomes depending on dosage among patients with elevated BMI, as well as affirm frequency of use of antihypertensive medication and uncover if the drug is not being used at all.

**Author Contributions:** All five authors contributed to the manuscript. D.K. and I.U.; data curation, E.S.; investigation, D.K. and E.S.; methodology, I.U.; project administration, I.U. and K.T.; resources, K.T.; supervision, I.U. and K.T.; validation, E.S.; visualization, D.K.; writing—original draft, D.K. and E.M.; writing—review and editing, E.S., E.M. and K.T. All authors have read and agreed to the published version of the manuscript.

**Funding:** The present study was part of the doctoral research program. The current doctoral research project was funded by the Riga Stradiņš University (Nr. 6-ZD-22/15/2021). The funder had no role in the design and conduct of the study; the collection, management, analysis, and interpretation of the data; and the preparation, review, or approval of the manuscript.

**Institutional Review Board Statement:** The study was conducted according to the guidelines of the Declaration of Helsinki and approved by the Riga Stradiņš University Research Ethics Committee, Decision No. 6-1/02/63 from 27 February 2020.

**Informed Consent Statement:** Informed consent was obtained from all subjects involved in the study. The authors affirm that all data collected, analyzed, and published will be free from any participant identifying details. The data were collected and processed in accordance with the General Data Protection Regulation (GDPR) 2016/679 on the protection of natural persons with regard to the processing of personal data.

**Data Availability Statement:** Data sharing not applicable.

**Conflicts of Interest:** The authors declare no conflict of interest.

## Appendix A

### Appendix A.1 Method Validation

The analytical method was developed and validated at the Latvian Institute of Organic Synthesis. The method was validated according to the EMA guideline on bioanalytical method validation and considers the acceptance criteria recommended for the following validation parameters: selectivity, carry-over, lower limit of quantification, linearity, matrix effect, accuracy, precision and stability [13]. Analyses were performed using Acquity

UPLC H-class (Waters) chromatograph (Waters Corporation, Milford, MA, USA) coupled to Xevo TQ-S (Waters) tandem mass spectrometer (Waters Corporation, Milford, MA, USA). Instrument and multiple reaction monitoring (MRM) parameters are shown in Table A1.

**Table A1.** Analytical parameters.

Chromatographic Parameters			
Column	Acquity UPLC BEH C18 (2.1 × 50 mm, 1.7 μm)		
Mobile phase	A: 0.1% aqueous formic acid B: acetonitrile		
Gradient	linear, 0 min—25% B, 1.5 min—98% B, 3.0 min—98% B, 3.5 min—25% B, 5.0 min—25% B		
Flow rate	0.4 mL/min		
Column temperature	40 °C		
Injection volume	5 μL		
Mass spectrometer parameters			
Ionization	positive electrospray		
Capillary voltage	3.0 kV		
Ion source temperature	140 °C		
Desolvation gas (N <sub>2</sub> ) flow	1000 L/h		
Desolvation temperature	600 °C		
MRM parameters			
Compound	MRM transition	Cone voltage, V	Collision energy, (eV)
AML	409.0 > 238.0	30	10
	409.0 > 294.0	30	10
DAML	407.0 > 286.0	30	25

#### Appendix A.2 Reagents

A pool of blank plasma was obtained from healthy volunteers and was used in the validation experiment. Methanol and acetonitrile (HPLC grade) were purchased from Merck and Honeywell, respectively. Formic acid (for mass spectrometry, ~98%) was obtained from Fluka Chemie GmbH. The AML besylate CRS (99.9%, Y0000049) and DAML (sc500192) standards were purchased from European Directorate for the Quality of Medicines of European Council and Santa Cruz Biotechnology respectively. Water was generated using a Milli-Q<sup>®</sup> ultra-pure water purification system (MilliporeSigma, Burlington, MA, USA).

#### Appendix A.3 Sample Preparation

AML (besylate) and DAML were dissolved in DMSO to prepare AML (calculated as free base) and DAML stock solutions in concentration of 10 mg/mL. DMSO stock solutions were used to spike human plasma with the desired concentration of analytes: 1.0; 2; 5; 10.0; 25.0 and 50.0 ng/mL for calibration standards and 1.0; 2.5; 20.0 and 40.0 ng/mL for quality control samples.

#### Appendix A.4 Sample Preparation for UPLC/MS/MS Analysis

A plasma sample (50 μL) was mixed with 450 μL of deproteinization solution acetonitrile-methanol (3:1, *v/v*). Samples were vortex-mixed and centrifuged at 10,000 rpm for 10 min. A supernatant (200 μL) was diluted with 800 μL of 0.1% aqueous formic acid solution, vortex-mixed, and used for UPLC/MS/MS analysis. Each sample was injected twice for quality controls and three times for calibration standards.

Appendix A.5 Results of AML and DAML Validation

Appendix A.5.1 Selectivity

Selectivity was tested in six different human plasma matrices. The method differentiates AML and DAML from endogenous human blood plasma components in all tested human plasma matrix samples. Peak responses (signal intensity) at retention time were similar to that of analytes in respective MRM channels in blank blood plasma samples were below 5% in comparison to the same human blood plasma spiked with amlodipine and dehydro-amlodipine at a lower limit of quantification (LLOQ) 1.0 ng/mL (see Table A2).

Table A2. Selectivity data for AML and DAML in human plasma.

Plasma Source	%, Response Blank Plasma vs. Spiked Plasma at LLOQ	
	AML	DAML
1	4.2	0.2
2	4.0	1.9
3	3.1	1.7
4	3.3	2.2
5	4.5	1.9
6	3.5	1.8

No interfering peaks were observed in chromatograms in any of the tested human blood plasma sources. AML and DAML MRM chromatograms of plasma source 1 are shown in Figures A1 and A2, respectively.

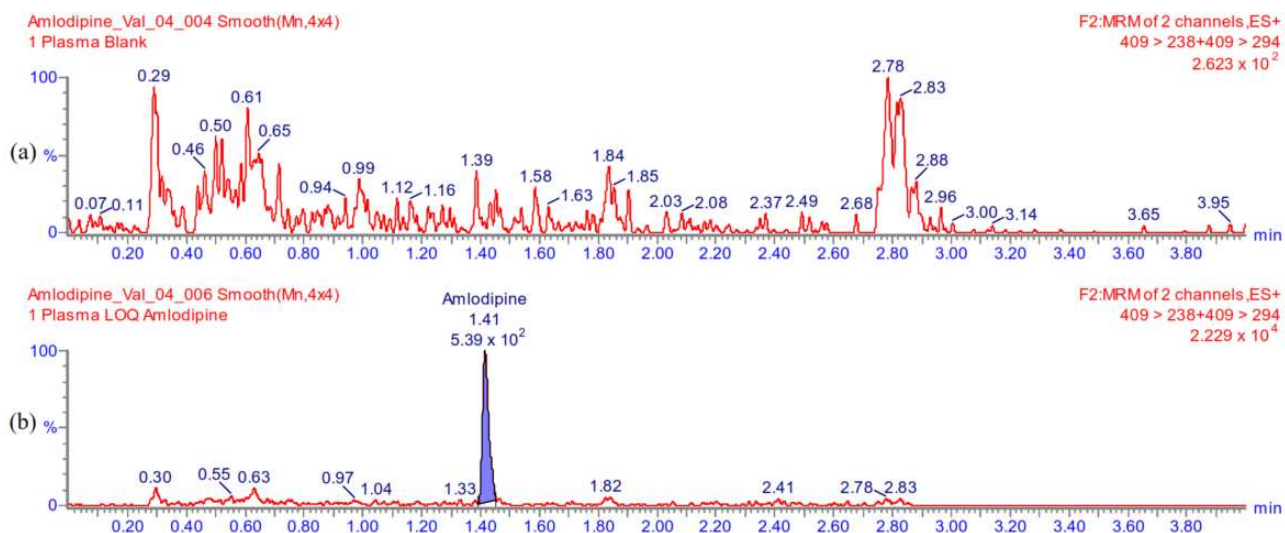
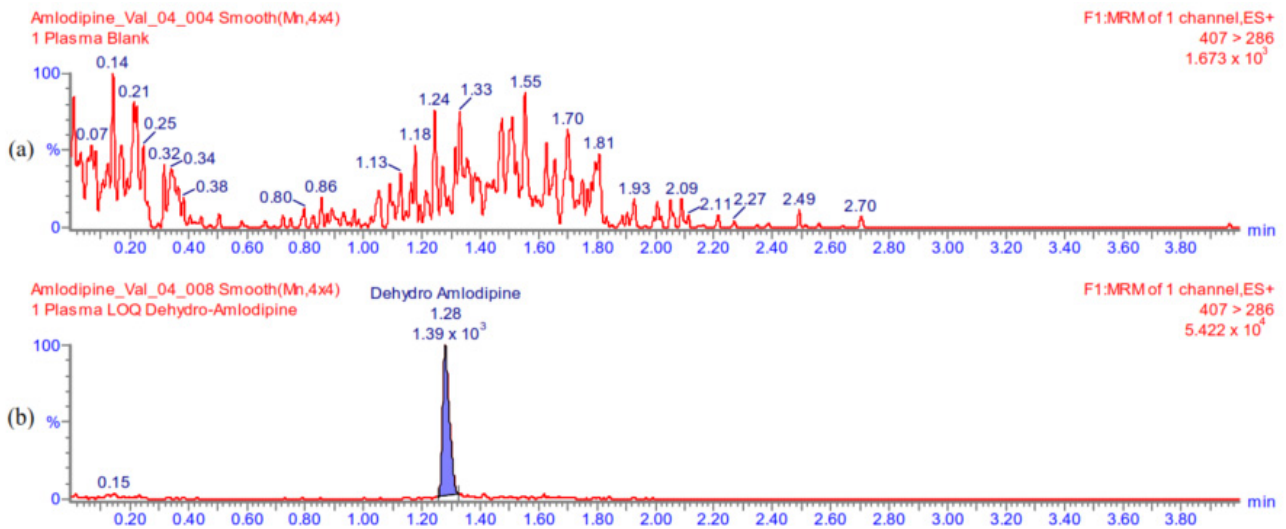
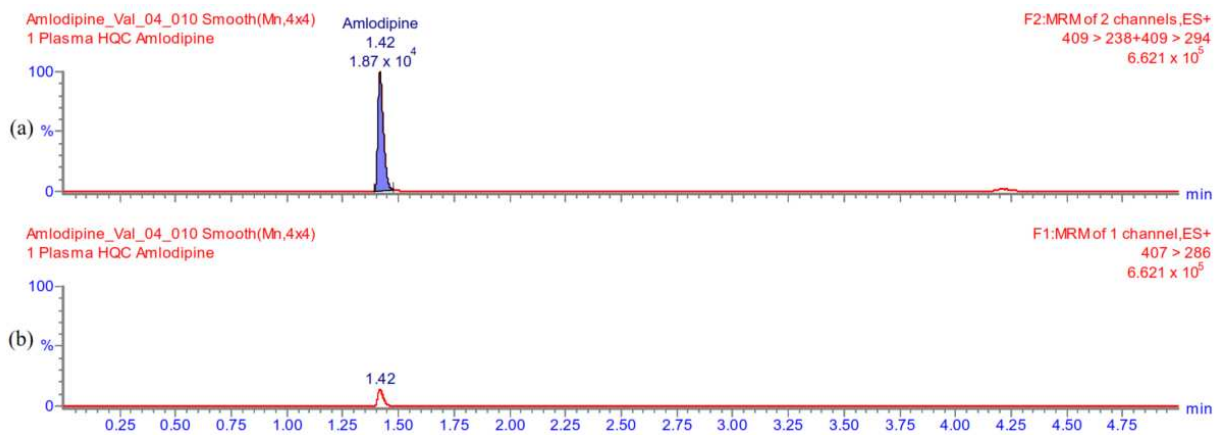


Figure A1. AML MRM chromatograms of human blood plasma source 1. (a) Blank plasma sample. (b) Plasma spiked with AML at 1.0 ng/mL.



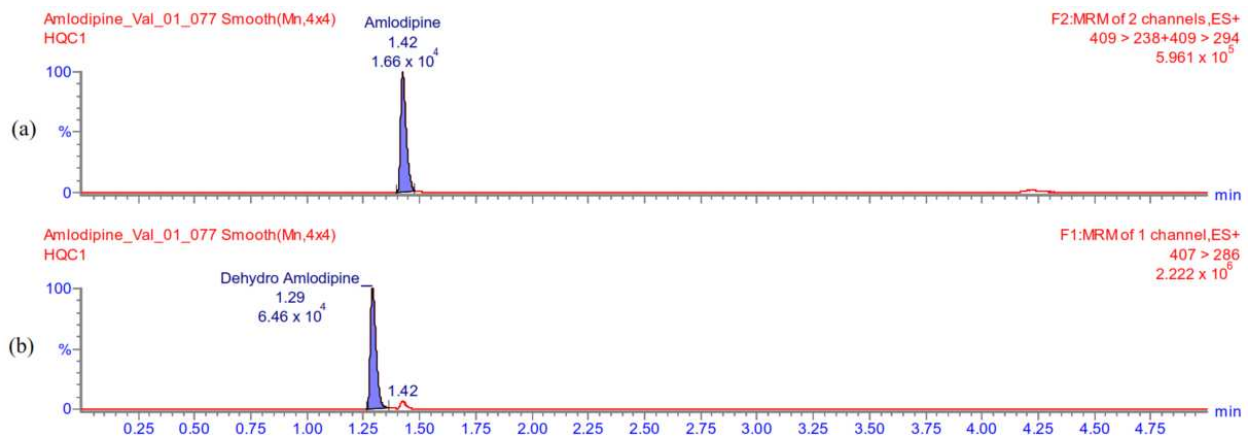
**Figure A2.** DAML MRM chromatograms of plasma source 1. (a) Blank plasma sample. (b) Plasma spiked with DAML at 1.0 ng/mL.

Although the method is selective with respect to human blood plasma components, there is interference caused by AML giving a false signal in the DAML MRM channel. In Figure A3 MRM chromatograms of human blood plasma samples spiked only with AML at 40.0 ng/mL are shown—see the peak in DAML MRM channel (b) which is at around 20% intensity of AML peak (a).



**Figure A3.** MRM chromatograms of human blood plasma samples spiked with AML at 40.0 ng/mL. (a) AML MRM chromatogram. (b) DAML MRM chromatogram (bottom plot).

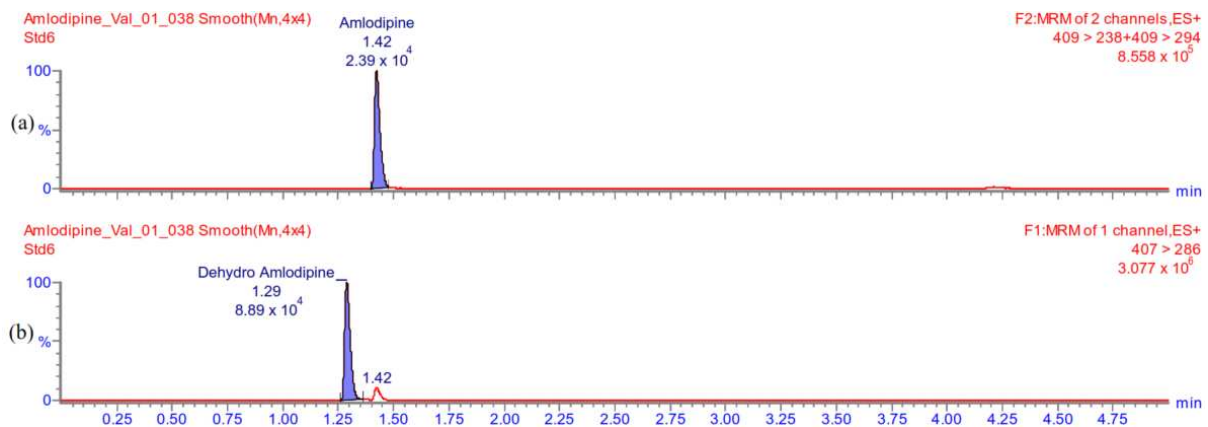
Despite the observed interference chromatographic separation of AML peak from DAML peak ensures specificity of the method (see Figure A4).



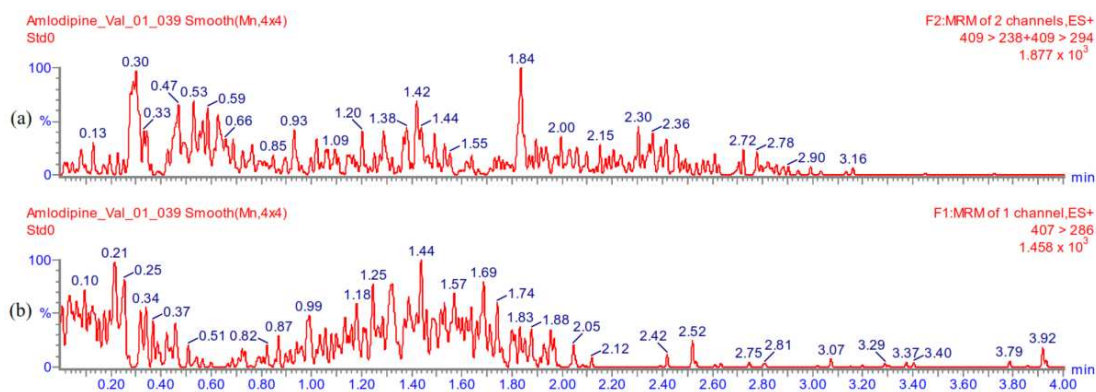
**Figure A4.** MRM chromatograms of human blood plasma sample spiked with AML and DAML. (a) AML (1.42 min) and (b) DAML (1.29 min) both at 40 ng/mL.

#### Appendix A.5.2 Carry-Over

Carry-over was tested using injecting the blank human blood plasma sample (see Figure A5) following the injections of the highest plasma calibration standard of 50.0 ng/mL (see Figure A6). No carry-over was observed for AML and DAML.



**Figure A5.** Chromatograms of highest plasma calibration standard 50.0 ng/mL. (a) AML and (b) DAML.



**Figure A6.** Chromatograms of back-calculated samples injected following the highest calibration standard analysis. (a) AML MRM channel and (b) DAML MRM channel.

### Appendix A.5.3 The Lowest Limit of Quantification

The lowest limit of quantification LLOQ is the lowest calibration standard (1.0 ng/mL) in plasma both for AML and its metabolite DAML. Signal to noise (S/N) of LLOQ samples concerning blank plasma samples were tested in six individual human plasma sources and its value was above the recommended minimum of five (see Table A3).

**Table A3.** Signal to noise values in human blood plasma spiked with AML and DAML at LLOQ 1.0 ng/mL.

Plasma Source	Signal to Noise	
	AML	DAML
1	24	45
2	25	52
3	32	58
4	30	45
5	22	51
6	28	56

### Appendix A.5.4 Linearity

The calibration range for AML and DAML in human blood plasma was from 1.0 ng/mL to 50.0 ng/mL. Calibration curves for all three runs for each analyte were linear. Calibration curve data (nominal concentration, back-calculated concentration and deviation, slope a, intercept b, and  $r^2$  values) for AML is shown in Table A4 and for DAML in Table A5, back-calculated concentration deviations were within the acceptable values of 15% for all calibration standards and 20% for standard level 1 (LLOQ). Calibration curves for AML and DAML (day 1) are shown in Figures A7 and A8, respectively.

**Table A4.** Calibration curve data for AML.

Standard Level	Nominal Conc., ng/mL	Day 1		Day 2		Day 3	
		Back Calc. Conc., ng/mL	Conc. Dev., %	Back Calc. Conc., ng/mL	Conc. Dev., %	Back Calc. Conc., ng/mL	Conc. Dev., %
1	1	0.91	−8.8	1.16	15.5	1.09	9.0
		1.09	9.0	1.12	11.9	1.05	5.3
		1.10	10.0	1.11	11.0	1.10	10.4
2	2	2.07	3.7	1.98	−1.0	2.04	2.0
		1.97	−1.6	1.83	−8.4	1.94	−3.2
		1.94	−3.1	1.77	−11.3	2.10	5.1
3	5	4.96	−0.8	4.96	−0.7	4.90	−2.1
		5.04	0.7	4.69	−6.3	4.76	−4.8
		5.03	0.6	4.98	−0.4	4.64	−7.3
4	10	9.76	−2.4	9.96	−0.4	9.50	−5.0
		9.66	−3.4	9.56	−4.4	9.32	−6.8
		9.50	−5.0	9.40	−6.0	9.50	−5.0

**Table A4.** *Cont.*

Standard Level	Nominal Conc., ng/mL	Day 1		Day 2		Day 3	
		Back Calc. Conc., ng/mL	Conc. Dev., %	Back Calc. Conc., ng/mL	Conc. Dev., %	Back Calc. Conc., ng/mL	Conc. Dev., %
5	25	24.57	−1.7	24.63	−1.5	24.50	−2.0
		24.64	−1.4	24.43	−2.3	25.22	0.9
		25.40	1.6	24.82	−0.7	24.32	−2.7
6	50	50.12	0.2	51.02	2.0	51.25	2.5
		51.27	2.5	51.26	2.5	50.91	1.8
		49.98	0.0	50.32	0.6	50.87	1.7
Calibration curve parameters							
		Day 1		Day 2		Day 3	
	A	478.63		412.26		378.34	
	B	−55.19		−96.62		−98.69	
	r <sup>2</sup>	0.9994		0.9989		0.9988	

**Table A5.** Calibration curve data for DAML.

Standard Level	Nominal Conc., ng/mL	Day 1		Day 2		Day 3	
		Back Calc. Conc., ng/mL	Conc. Dev., %	Back Calc. Conc., ng/mL	Conc. Dev., %	Back Calc. Conc., ng/mL	Conc. Dev., %
1	1	1.05	5.3	1.04	3.5	1.02	2.1
		1.05	5.0	1.03	3.1	1.03	3.0
		1.04	3.7	1.03	3.3	1.04	3.7
2	2	1.95	−2.7	1.97	−1.5	2.01	0.4
		1.94	−2.9	2.00	0.1	2.03	1.4
		2.01	0.4	1.99	−0.6	2.05	2.4
3	5	4.94	−1.3	4.89	−2.2	4.85	−3.0
		4.98	−0.4	4.92	−1.6	4.89	−2.2
		4.79	−4.2	4.89	−2.3	4.90	−2.1
4	10	9.99	−0.1	9.70	−3.0	9.79	−2.2
		9.77	−2.3	9.99	−0.1	9.78	−2.2
		9.88	−1.2	9.75	−2.5	9.62	−3.8
5	25	25.16	0.6	25.38	1.5	25.19	0.8
		24.72	−1.1	25.55	2.2	25.22	0.9
		24.85	−0.6	25.20	0.8	24.83	−0.7



Table A5. Cont.

Standard Level	Nominal Conc., ng/mL	Day 1		Day 2		Day 3	
		Back Calc. Conc., ng/mL	Conc. Dev., %	Back Calc. Conc., ng/mL	Conc. Dev., %	Back Calc. Conc., ng/mL	Conc. Dev., %
6	50	49.66	-0.7	49.60	-0.8	51.02	2.0
		50.33	0.7	49.35	-1.3	50.17	0.3
		50.91	1.8	50.73	1.5	49.58	-0.8
Calibration curve parameters							
		Day 1		Day 2		Day 3	
	A	1750.97		1587.51		1419.38	
	B	-235.98		-264.37		-233.04	
	r <sup>2</sup>	0.9998		0.9997		0.9997	

Compound name: Amlodipine  
 Correlation coefficient:  $r = 0.999715$ ,  $r^2 = 0.999431$   
 Calibration curve:  $478.634 * x + -55.1933$   
 Response type: External Std, Area  
 Curve type: Linear, Origin: Exclude, Weighting: 1/x, Axis trans: None

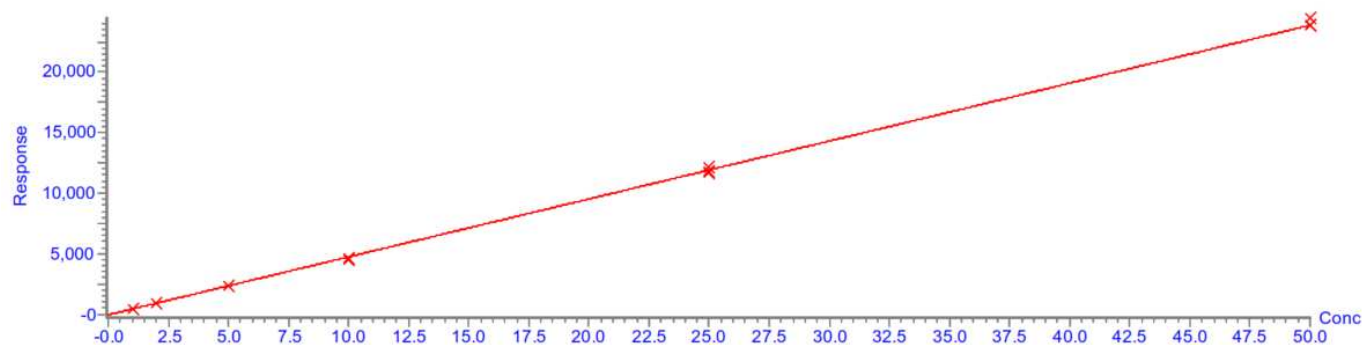


Figure A7. AML calibration curve in human plasma, concentration range 1–50 ng/mL, day 1.

Compound name: Dehydro Amlodipine  
 Correlation coefficient:  $r = 0.999881$ ,  $r^2 = 0.999761$   
 Calibration curve:  $1750.97 * x + -235.979$   
 Response type: External Std, Area  
 Curve type: Linear, Origin: Exclude, Weighting: 1/x, Axis trans: None

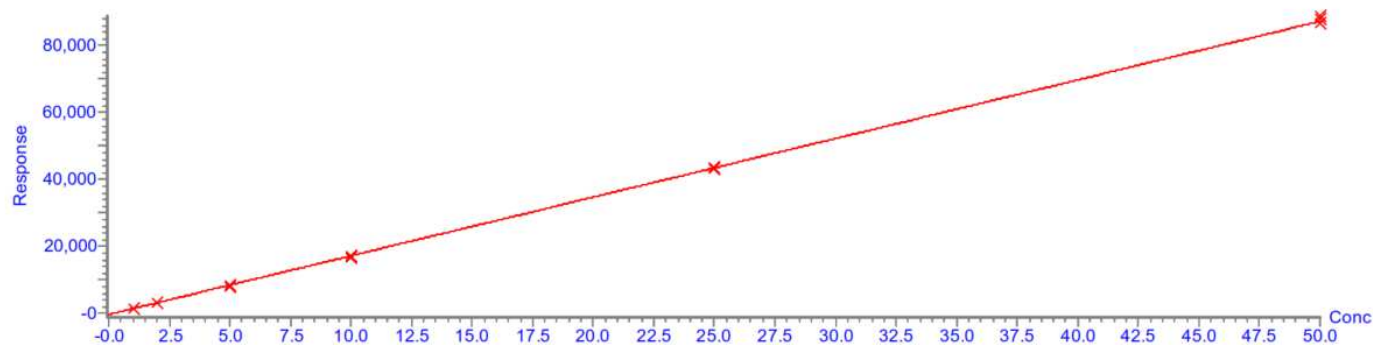


Figure A8. DAML calibration curve in human plasma, concentration range 1–50 ng/mL, day 1.

### Appendix A.5.5 Accuracy and Precision

Accuracy and precision of the method were determined by analyzing five samples per level at four concentration levels: LLOQ 1.0 ng/mL, low QC 2.5 ng/mL, medium QC 20.0 ng/mL, and high QC 40.0 ng/mL spiked in human plasma. Three runs on three different days were performed. Accuracy was expressed as mean concentration deviation from nominal concentration or relative error (RE, %). Precision was expressed as the coefficient of variation (CV, %) between the measurement of five replicates. Obtained accuracy and precision values were within 20% for plasma samples spiked at LLOQ level and within 15% for low, medium, and high QC level samples. Summary data of accuracy and precision for AML and DAML is shown in Tables A6 and A7, respectively.

**Table A6.** Accuracy and precision data for AML.

QC Level, Conc., ng/mL	Day 1			Day 2			Day 3			Between-Run		
	Mean Conc., ng/mL	RE, %	CV, %	Mean Conc., ng/mL	RE, %	CV, %	Mean Conc., ng/mL	RE, %	CV, %	Mean Conc., ng/mL	RE, %	CV, %
LLOQ 1.0 ng/mL	0.98	−1.80	3.68	1.09	9.10	6.38	1.15	15.11	3.36	1.07	7.48	8.01
LQC 2.5 ng/mL	2.31	−7.40	4.70	2.64	1.70	2.69	2.62	4.96	3.72	2.49	−0.25	6.45
MQC 20.0 ng/mL	17.61	−12.00	0.70	19.83	−0.90	2.61	20.11	0.57	1.20	19.18	−4.08	6.26
HQC 40.0 ng/mL	35.44	−11.40	0.69	39.96	−0.10	1.26	41.22	3.04	1.69	38.87	−2.82	6.71

**Table A7.** Accuracy and precision data for DAML.

QC Level, Conc., ng/mL	Day 1			Day 2			Day 3			Between-Run		
	Mean Conc., ng/mL	RE, %	CV, %	Mean Conc., ng/mL	RE, %	CV, %	Mean Conc., ng/mL	RE, %	CV, %	Mean Conc., ng/mL	RE, %	CV, %
LLOQ 1.0 ng/mL	1.07	7.20	2.99	1.14	14.00	2.07	1.15	15.06	4.14	1.12	12.08	4.35
LQC 2.5 ng/mL	2.53	1.20	3.45	2.66	6.40	1.80	2.68	7.34	4.14	2.63	5.01	4.03
MQC 20.0 ng/mL	18.77	−6.20	1.19	20.04	0.20	1.56	20.93	4.66	0.84	19.91	−0.43	4.75
HQC 40.0 ng/mL	37.83	−5.40	1.10	39.98	−1.60	2.10	41.92	4.79	0.85	39.71	−0.73	4.59

### Appendix A.5.6 Matrix Effect

Matrix effect was tested using six individual sources of human plasma. It was calculated as the ratio of the analyte peak area in the presence of matrix (spiked post-extraction plasma) to the peak area in absence of matrix. Determination was achieved at low QC 2.5 ng/mL and high QC 40.0 ng/mL. The average matrix factor was slightly above 1, indicating an insignificant “positive” matrix effect. The coefficient of variation for matrix factor determined from six human plasma sources was less than 7% indicating small variation between tested human plasma sources (see Table A8).

**Table A8.** Matrix effect for AML and DAML in six human plasma sources.

Analyte	QC Level, Conc., ng/mL	Plasma Source	Matrix Effect	Average Matrix Effect	CV, %
AML	LQC 2.5 ng/mL	1	1.06	1.01	3.7
		2	1.03		
		3	1.04		
		4	0.96		
		5	1.00		
		6	0.98		
	HQC 40.0 ng/mL	1	1.03	1.02	2.0
		2	1.05		
		3	1.00		
		4	1.00		
		5	1.00		
		6	1.02		
DAML	LQC 2.5 ng/mL	1	1.15	1.07	4.1
		2	1.08		
		3	1.06		
		4	1.04		
		5	1.03		
		6	1.04		
	HQC 40.0 ng/mL	1	1.13	1.01	6.4
		2	0.98		
		3	0.96		
		4	1.01		
		5	0.95		
		6	1.04		

Appendix A.5.7 Stability

Stability was tested for spiked human blood plasma samples stored at room temperature for four hours (bench-top stability) and for extracted plasma samples stored in an autosampler at 10 °C for 24 h (on-instrument stability). Table-top stability of AML was 84% for LQC and 87% for HQC samples, DAML concentration measured after 4 h at room temperature was more than 90% with respect to nominal concentration (see Table A9). No degradation of AML and DAML was found in extracted plasma samples kept in an autosampler at 10 °C for 24 h (see Table A10). Long-term stability data for AML plasma samples have been reported previously [38,49–52].

**Table A9.** Bench-top stability (4 h, room temperature) for AML and DAML spiked in human plasma.

QC Level, Conc., ng/mL	AML		DAML	
	Average Concentration Found, ng/mL	Stability, %	Average Concentration Found, ng/mL	Stability, %
LQC 2.5 ng/mL	2.11	82.4	2.42	96.7

Table A9. Cont.

QC Level, Conc., ng/mL	AML		DAML	
	Average Concentration Found, ng/mL	Stability, %	Average Concentration Found, ng/mL	Stability, %
HQC 40.0 ng/mL	34.80	87.0	36.49	91.2

Table A10. On-instrument stability (24 h, 10 °C) for AML and DAML in extracted human plasma samples.

QC Level, Conc., ng/mL	AML		DAML	
	Average Concentration Found, ng/mL	Stability, %	Average Concentration Found, ng/mL	Stability, %
LQC 2.5 ng/mL	2.82	112.8	2.80	112.1
HQC 40.0 ng/mL	41.39	103.5	41.67	104.2

## References

- Zhou, B.; Carrillo-Larco, R.M.; Danaei, G.; Riley, L.M.; Paciorek, C.J.; Stevens, G.A.; Gregg, E.W.; Bennett, J.E.; Solomon, B.; Singleton, R.K.; et al. Worldwide trends in hypertension prevalence and progress in treatment and control from 1990 to 2019: A pooled analysis of 1201 population-representative studies with 104 million participants. *Lancet* **2021**, *398*, 957–980. [[CrossRef](#)] [[PubMed](#)]
- WHO. *Adherence to Long-Term Therapies: Evidence for Action*; World Health Organization: Geneva, Switzerland, 2003.
- De Cates, A.N.; Farr, M.R.B.; Wright, N.; Jarvis, M.C.; Rees, K.; Ebrahim, S.; Huffman, M.D. Fixed-dose combination therapy for the prevention of cardiovascular disease. *Cochrane Database Syst. Rev.* **2014**, CD009868. [[CrossRef](#)]
- McCormack, T.; Boffa, R.J.; Jones, N.R.; Carville, S.; McManus, R.J. The 2018 ESC/ESH hypertension guideline and the 2019 NICE hypertension guideline, how and why they differ. *Eur. Heart J.* **2019**, *40*, 3456–3458. [[CrossRef](#)] [[PubMed](#)]
- Van Zwieten, P.A. Amlodipine: An overview of its pharmacodynamic and pharmacokinetic properties. *Clin. Cardiol.* **1994**, *17*, III3–6. [[PubMed](#)]
- Toal, C.B.; Meredith, P.A.; Elliott, H.L. Long-acting dihydropyridine calcium-channel blockers and sympathetic nervous system activity in hypertension: A literature review comparing amlodipine and nifedipine GITS. *Blood Press* **2012**, *21*, 3–10. [[CrossRef](#)] [[PubMed](#)]
- Vukadinović, D.; Scholz, S.; Messerli, F.H.; Weber, M.A.; Williams, B.; Böhm, M.; Mahfoud, F. Peripheral edema and headache associated with amlodipine treatment: A meta-Analysis of randomized, placebo-controlled trials. *J. Hypertens.* **2019**, *37*, 2093–2103. [[CrossRef](#)] [[PubMed](#)]
- Zhu, Y.; Wang, F.; Li, Q.; Zhu, M.; Du, A.; Tang, W.; Chen, W. Amlodipine metabolism in human liver microsomes and roles of CYP3A4/5 in the dihydropyridine dehydrogenation. *Drug Metab. Dispos.* **2013**, *42*, 245–249. [[CrossRef](#)]
- Alghurair, S.A.; Hughes, C.A.; Simpson, S.H.; Guirguis, L.M. A systematic review of patient self-reported barriers of adherence to antihypertensive medications using the world health organization multidimensional adherence model. *J. Clin. Hypertens.* **2012**, *14*, 877–886. [[CrossRef](#)]
- Iuga, A.O.; McGuire, M.J. Adherence and health care costs. *Risk Manag. Health Policy* **2014**, *7*, 35–44. [[CrossRef](#)]
- Burnier, M.; Egan, B.M. Adherence in Hypertension. *Circ. Res.* **2019**, *124*, 1124–1140. [[CrossRef](#)]
- George, J.; MacDonald, T. Home blood pressure monitoring. *Eur. Cardiol. Rev.* **2015**, *10*, 95–101. [[CrossRef](#)] [[PubMed](#)]
- European Medicines Agency. *European Medicines Agency, Guideline on Bioanalytical Method Validation*; European Medicines Agency: London, UK, 2012.
- Shi, S.; Shen, Z.; Duan, Y.; Ding, S.; Zhong, Z. Association Between Medication Literacy and Medication Adherence Among Patients With Hypertension. *Front. Pharmacol.* **2019**, *10*, 822. [[CrossRef](#)] [[PubMed](#)]
- Fleig, S.V.; Weger, B.; Haller, H.; Limbourg, F.P. Effectiveness of a Fixed-Dose, Single-Pill Combination of Perindopril and Amlodipine in Patients with Hypertension: A Non-Interventional Study. *Adv. Ther.* **2018**, *35*, 353–366. [[CrossRef](#)] [[PubMed](#)]
- Pallangyo, P.; Komba, M.; Mkojera, Z.S.; Kisenge, P.R.; Bhalia, S.; Mayala, H.; Kifai, E.; Richard, M.K.; Khanbhai, K.; Wibonela, S.; et al. Medication Adherence and Blood Pressure Control Among Hypertensive Outpatients Attending a Tertiary Cardiovascular Hospital in Tanzania: A Cross-Sectional Study. *Integr. Blood Press. Control* **2022**, *15*, 97–112. [[CrossRef](#)]

17. Verma, A.A.; Khuu, W.; Tadrous, M.; Gomes, T.; Mamdani, M.M. Fixed-dose combination antihypertensive medications, adherence, and clinical outcomes: A population-based retrospective cohort study. *PLoS Med.* **2018**, *15*, e1002584. [[CrossRef](#)]
18. Choi, H.Y.; Oh, I.J.; Lee, J.A.; Lim, J.; Kim, Y.S.; Jeon, T.-H.; Cheong, Y.-S.; Kim, D.-H.; Kim, M.-C.; Lee, S.Y. Factors affecting adherence to antihypertensive medication. *Korean J. Fam. Med.* **2018**, *39*, 325–332. [[CrossRef](#)]
19. Sheppard, J.P.; Albasri, A.; Gupta, P.; Patel, P.; Khunti, K.; Martin, U.; McManus, R.J.; Hobbs, F.D.R. Measuring adherence to antihypertensive medication using an objective test in older adults attending primary care: Cross-sectional study. *J. Hum. Hypertens.* **2021**, *36*, 1106–1112. [[CrossRef](#)]
20. Uchmanowicz, B.; Chudiak, A.; Uchmanowicz, I.; Rosińczuk, J.; Froelicher, E.S. Factors influencing adherence to treatment in older adults with hypertension. *Clin. Interv. Aging* **2018**, *ume 13*, 2425–2441. [[CrossRef](#)]
21. Consolazio, D.; Gattoni, M.E.; Russo, A.G. Exploring gender differences in medication consumption and mortality in a cohort of hypertensive patients in Northern Italy. *BMC Public Health* **2022**, *22*, 768. [[CrossRef](#)]
22. Bhagavathula, A.S.; Shah, S.M.; Aburawi, E.H. Medication adherence and treatment-resistant hypertension in newly treated hypertensive patients in the United Arab Emirates. *J. Clin. Med.* **2021**, *10*, 5036. [[CrossRef](#)]
23. Najimi, A.; Mostafavi, F.; Sharifirad, G.; Golshiri, P. Barriers to medication adherence in patients with hypertension: A qualitative study. *J. Educ. Health Promot.* **2018**, *7*, 24. [[CrossRef](#)] [[PubMed](#)]
24. Gavrilova, A.; Bandere, D.; Logviss, K.; Šmits, D.; Urtāne, I. Adherence level to arterial hypertension treatment: A cross-sectional patient survey and retrospective analysis of the nhs prescription database. *Healthcare* **2021**, *9*, 1085. [[CrossRef](#)] [[PubMed](#)]
25. Shimels, T.; Kassu, R.A.; Bogale, G.; Bekele, M.; Getnet, M.; Getachew, A.; Shewamene, Z.; Abraha, M. Magnitude and associated factors of poor medication adherence among diabetic and hypertensive patients visiting public health facilities in Ethiopia during the COVID-19 pandemic. *PLoS ONE* **2021**, *16*, e0249222. [[CrossRef](#)]
26. Abdisa, L.; Alemu, A.; Heluf, H.; Sertsu, A.; Dessie, Y.; Negash, B.; Ayana, G.M.; Letta, S. Factors associated with poor medication adherence during COVID-19 pandemic among hypertensive patients visiting public hospitals in Eastern Ethiopia: A cross-sectional study. *BMJ Open* **2022**, *12*, 64284. [[CrossRef](#)] [[PubMed](#)]
27. Özcan, A.; Aydın Avcı, İ. The influence of the pandemic on fear of contagion, blood pressure management and adherence to medication in hypertensive older adults in Turkey. *J. Hum. Hypertens.* **2022**, *36*, 852–859. [[CrossRef](#)] [[PubMed](#)]
28. Kulkarni, S.; Rao, R.; Goodman, J.D.H.; Connolly, K.; O’Shaughnessy, K.M. Nonadherence to antihypertensive medications amongst patients with uncontrolled hypertension: A retrospective study. *Medicine* **2021**, *100*, e24654. [[CrossRef](#)] [[PubMed](#)]
29. Gebreyohannes, E.A.; Bhagavathula, A.S.; Abebe, T.B.; Tefera, Y.G.; Abegaz, T.M. Adverse effects and non-adherence to antihypertensive medications in University of Gondar Comprehensive Specialized Hospital. *Clin. Hypertens.* **2019**, *25*, 1. [[CrossRef](#)]
30. Corrao, G.; Rea, F.; Ghirardi, A.; Soranna, D.; Merlino, L.; Mancia, G. Adherence with antihypertensive drug therapy and the risk of heart failure in clinical practice. *Hypertension* **2015**, *66*, 742–749. [[CrossRef](#)] [[PubMed](#)]
31. Wagmann, L.; Vollmer, A.C.; Lauder, L.; Mahfoud, F.; Meyer, M.R. Assessing adherence to antihypertensive medication by means of dose-dependent reference plasma concentration ranges and ultra-high performance liquid chromatography-ion trap mass spectrometry analysis. *Molecules* **2021**, *26*, 1495. [[CrossRef](#)]
32. Adidja, N.M.; Agbor, V.N.; Aminde, J.A.; Ngwasiri, C.A.; Ngu, K.B.; Aminde, L.N. Non-adherence to antihypertensive pharmacotherapy in Buea, Cameroon: A cross-sectional community-based study. *BMC Cardiovasc. Disord.* **2018**, *18*, 1–9. [[CrossRef](#)]
33. Fares, H.; DiNicolantonio, J.J.; O’Keefe, J.H.; Lavie, C.J. Amlodipine in hypertension: A first-line agent with efficacy for improving blood pressure and patient outcomes. *Open Heart* **2016**, *3*, e000473. [[CrossRef](#)]
34. Ozawa, Y.; Hayashi, K.; Kobori, H. New Generation Calcium Channel Blockers in Hypertensive Treatment. *Curr. Hypertens. Rev.* **2006**, *2*, 103–111. [[CrossRef](#)] [[PubMed](#)]
35. Abernethy, D.R. Pharmacokinetics and pharmacodynamics of Amlodipine. *Cardiology* **1992**, *80*, 31–36. [[CrossRef](#)] [[PubMed](#)]
36. Meredith, P.A.; Elliott, H.L. Clinical Pharmacokinetics of Amlodipine. *Clin. Pharmacokinet.* **1992**, *22*, 22–31. [[CrossRef](#)] [[PubMed](#)]
37. Koraćević, G.P.; Dakić, S.S.; Veličković-Radovanović, R.M.; Apostolovic, S.; Krstić, N.H.; Tasic, I.; Zdravkovic, M.; Antonijević, N.M.; Damjanović, G.N.; Kostić, T.L. Amlodipine as an antiischemic drug is superior to long acting nitrates. *Open Med.* **2015**, *10*, 50–56. [[CrossRef](#)]
38. Sirikatitham, A.; Panrat, K.; Tanmanee, N.W. Determination of amlodipine in human plasma by electrospray ionization LC-MS/MS method: Validation and its stability studies. *Songklanakarin J. Sci. Technol.* **2008**, *30*, 455–462.
39. Nirogi, R.V.S.; Kandikere, V.N.; Mudigonda, K.; Shukla, M.; Maurya, S. Sensitive and rapid liquid chromatography/tandem mass spectrometry assay for the quantification of amlodipine in human plasma. *Biomed. Chromatogr.* **2006**, *20*, 833–842. [[CrossRef](#)]
40. Bhatt, J.; Singh, S.; Subbaiah, G.; Shah, B.; Kambli, S.; Ameta, S. A rapid and sensitive liquid chromatography-tandem mass spectrometry (LS-MS/MS) method for the estimation of amlodipine in human plasma. *Biomed. Chromatogr.* **2007**, *21*, 169–175. [[CrossRef](#)]
41. Kristoffersen, L.; Øiestad, E.L.; Opdal, M.S.; Krogh, M.; Lundanes, E.; Christophersen, A.S. Simultaneous determination of 6 beta-blockers, 3 calcium-channel antagonists, 4 angiotensin-II antagonists and 1 antiarrhythmic drug in post-mortem whole blood by automated solid phase extraction and liquid chromatography mass spectrometry. *Method developm. J. Chromatogr. B Anal. Technol. Biomed. Life Sci.* **2007**, *850*, 147–160. [[CrossRef](#)]

42. Ma, Y.; Qin, F.; Sun, X.; Lu, X.; Li, F. Determination and pharmacokinetic study of amlodipine in human plasma by ultra performance liquid chromatography-electrospray ionization mass spectrometry. *J. Pharm. Biomed. Anal.* **2007**, *43*, 1540–1545. [[CrossRef](#)]
43. Ramani, A.V.; Sengupta, P.; Mullangi, R. Development and validation of a highly sensitive and robust LC-ESI-MS/MS method for simultaneous quantitation of simvastatin acid, amlodipine and valsartan in human plasma: Application to a clinical pharmacokinetic study. *Biomed. Chromatogr.* **2009**, *23*, 615–622. [[CrossRef](#)] [[PubMed](#)]
44. Zou, Q.; Zhan, Y.; Ge, Z.; Wei, P.; Ouyang, P. Liquid chromatography-mass spectrometry method for the determination of amlodipine in human plasma and its application in a bioequivalence study. *Arzneimittel Forschung Drug Res.* **2009**, *59*, 383–391. [[CrossRef](#)] [[PubMed](#)]
45. Jangala, H.; Vats, P.; Khuroo, A.H.; Monif, T. Development and Validation of a LC-MS/MS Method for the Simultaneous Estimation of Amlodipine and Valsartan in Human Plasma: Application to a Bioequivalence Study. *Sci. Pharm.* **2014**, *82*, 585–600. [[CrossRef](#)] [[PubMed](#)]
46. Kim, Y.-H.; Bae, Y.-J.; Kim, H.S.; Cha, H.-J.; Yun, J.-S.; Shin, J.-S.; Seong, W.-K.; Lee, Y.-M.; Han, K.-M. Measurement of human cytochrome P450 enzyme induction based on mesalazine and mosapride citrate treatments using a luminescent assay. *Biomol. Ther.* **2015**, *23*, 486–492. [[CrossRef](#)] [[PubMed](#)]
47. Fowler, S.; Zhang, H. In vitro evaluation of reversible and irreversible cytochrome P450 inhibition: Current status on methodologies and their utility for predicting drug-drug interactions. *AAPS J.* **2008**, *10*, 410–424. [[CrossRef](#)]
48. Danafar, H.; Hamidi, M. Method validation of amlodipine and atorvastatin by liquid chromatography–mass spectrometry (LC–MS) method in human plasma. *Cogent Med.* **2016**, *3*, 1129790. [[CrossRef](#)]
49. Meyyanathan, S.N.; Muralidharan, S.; Rajan, S.; Gopal, K.; Suresh, B. A Simple Sample Preparation with HPLC—UV Method for Estimation of Amlodipine from Plasma: Application to Bioequivalence Study. *Open Chem. Biomed. Methods J.* **2008**, *1*, 22–27. [[CrossRef](#)]
50. Lv, C.-M.; Wei, C.-M.; Bu, F.-L.; Chen, R.; Wang, X.-L.; Li, R.; Wang, B.-J.; Guo, R.-C. Determination of Amlodipine in Human Plasma by LC-MS/MS and Its Bioequivalence Study in Healthy Chinese Subjects. *Pharmacol. Pharm.* **2013**, *4*, 191–200. [[CrossRef](#)]
51. Taguchi, R.; Naito, T.; Sato, H.; Kawakami, J. Validated LC-MS/MS method for the simultaneous determination of amlodipine and its major metabolites in human plasma of hypertensive patients. *Ther. Drug Monit.* **2017**, *39*, 625–631. [[CrossRef](#)] [[PubMed](#)]
52. Wang, T.; Wang, Y.; Lin, S.; Fang, L.; Lou, S.; Zhao, D.; Zhu, J.; Yang, Q.; Wang, Y. Evaluation of pharmacokinetics and safety with bioequivalence of Amlodipine in healthy Chinese volunteers: Bioequivalence Study Findings. *J. Clin. Lab. Anal.* **2020**, *34*, e23228. [[CrossRef](#)]

**Disclaimer/Publisher’s Note:** The statements, opinions and data contained in all publications are solely those of the individual author(s) and contributor(s) and not of MDPI and/or the editor(s). MDPI and/or the editor(s) disclaim responsibility for any injury to people or property resulting from any ideas, methods, instructions or products referred to in the content.