

Figure S1: 300 MHz  $^1\text{H}$ -NMR spectrum of **2** in  $\text{CDCl}_3$

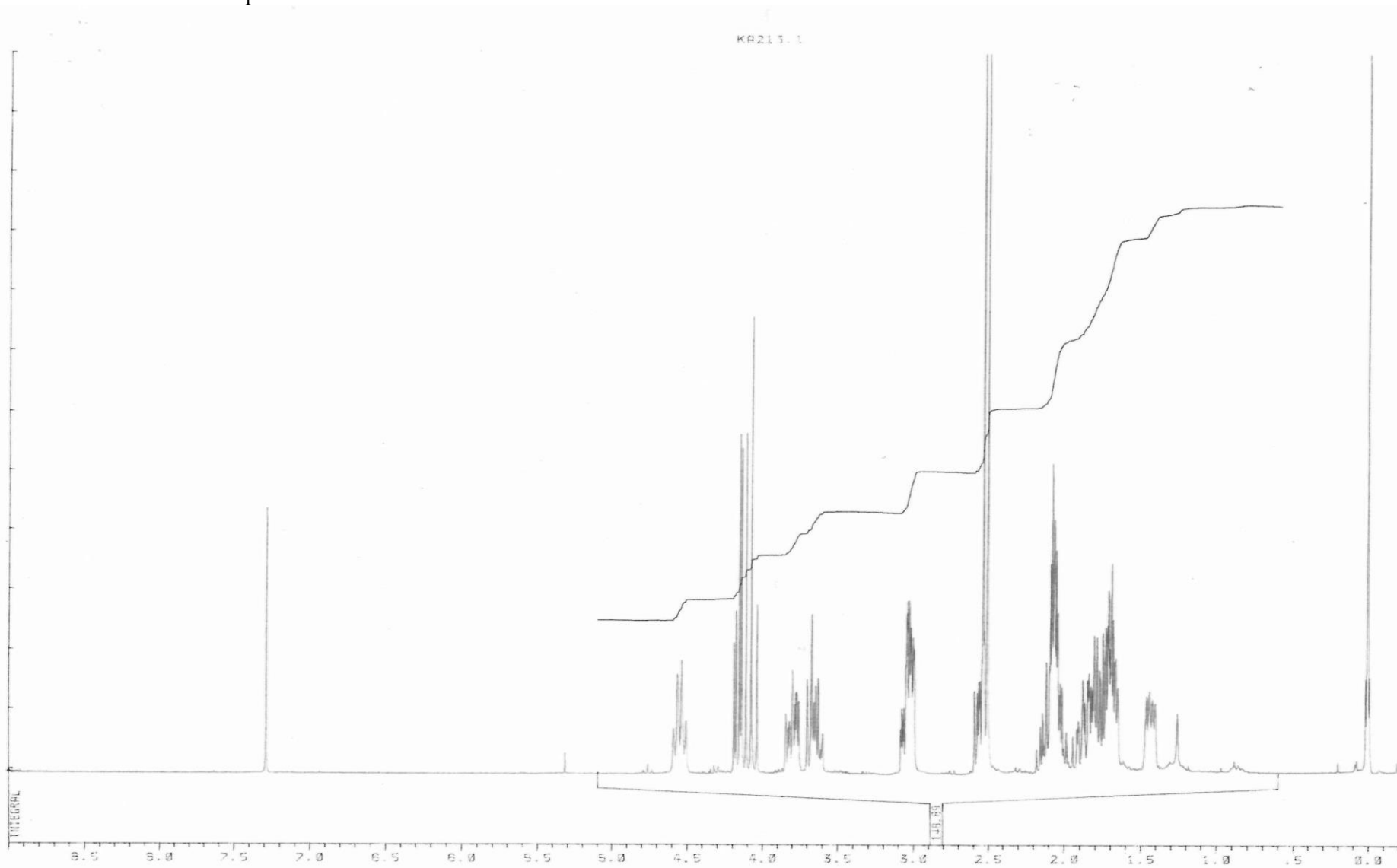


Figure S2: 75 MHz normal and DEPT <sup>13</sup>C-NMR spectra of **2** in CDCl<sub>3</sub>

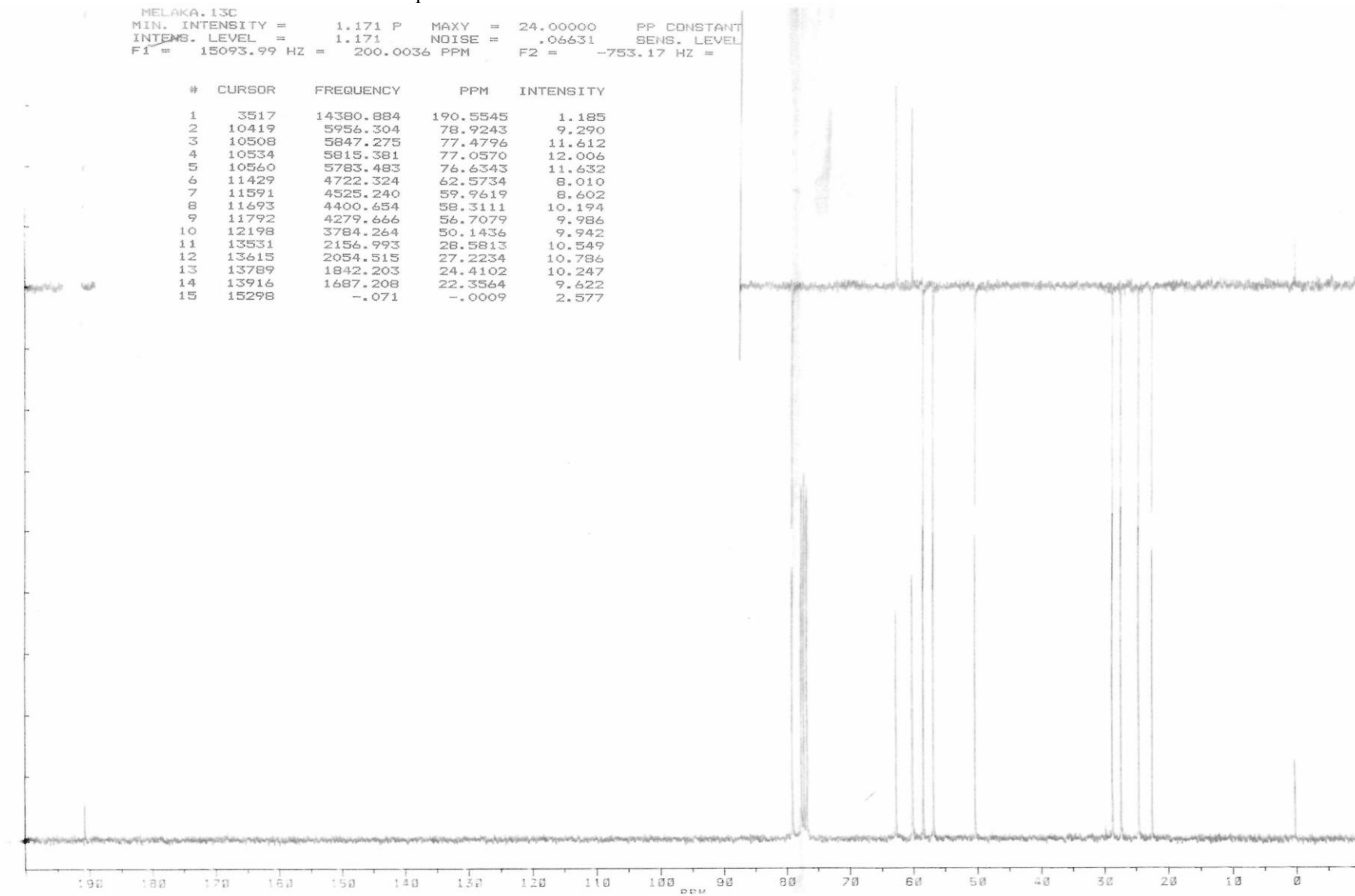


Figure S3: COSY 2D H-H correlation NMR spectrum of 2

04112018-23-raa-raa-M.11.ser  
2D 1H,1H-DQF-COSY (mag. mode)  
KA213a

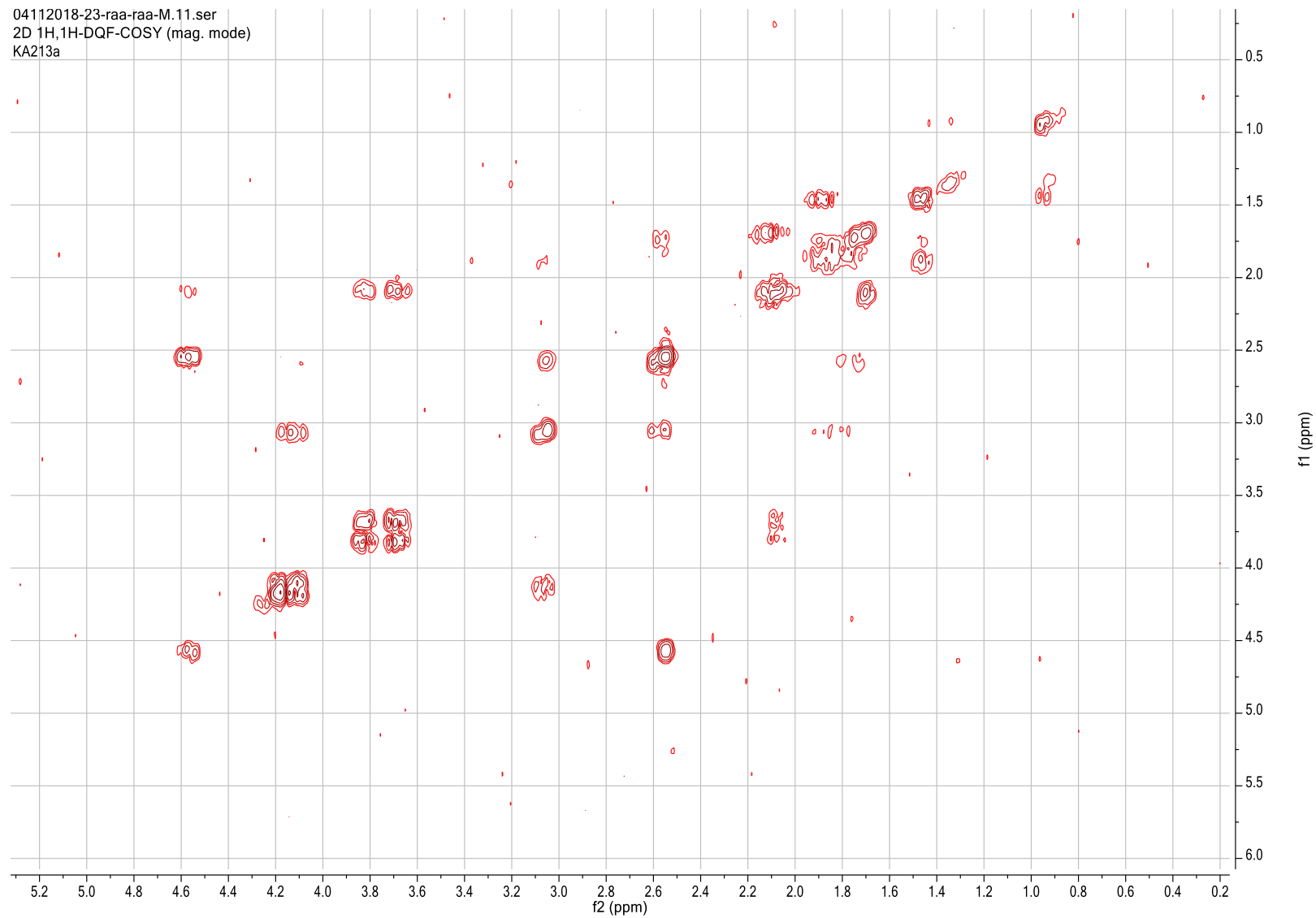


Figure S4: HSQC 2D C-H correlation NMR spectrum of **2** (red = CH<sub>2</sub>, blue = CH)

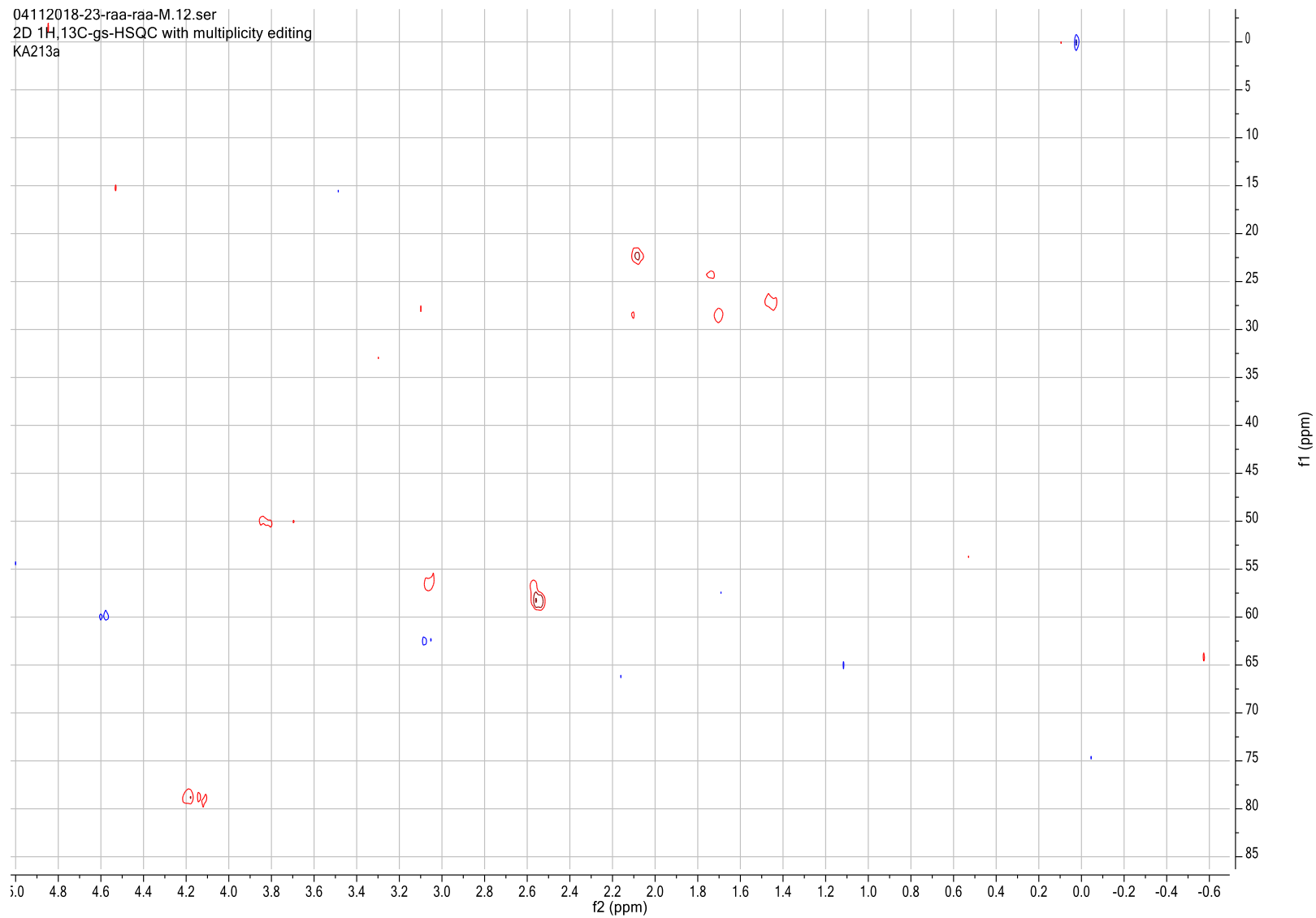


Figure S5: Electron impact mass spectrum of 2

