

Supplementary Information

2-((*E*)-2-((*E*)-4-chloro-5-(2-((*E*)-5-methoxy-3,3-dimethyl-1-(3-phenylpropyl)indolin-2-ylidene)ethylidene)-1,1-dimethyl-1,2,5,6-tetrahydropyridin-1-ium-3-yl)vinyl)-5-methoxy-3,3-dimethyl-1-(3-phenylpropyl)-3*H*-indol-1-ium.

Emmanuel Ramsey Buabeng^{1,2}, Maged Henary*^{1,2}

¹Department of Chemistry, 100 Piedmont Avenue SE, Georgia State University, Atlanta, GA 30303, USA;

²Center for Diagnostics and Therapeutics, 100 Piedmont Avenue SE, Georgia State University, Atlanta, GA 30303, USA

* Corresponding author, mhenary1@gsu.edu; Tel: 4044135566; Fax: 4044135505

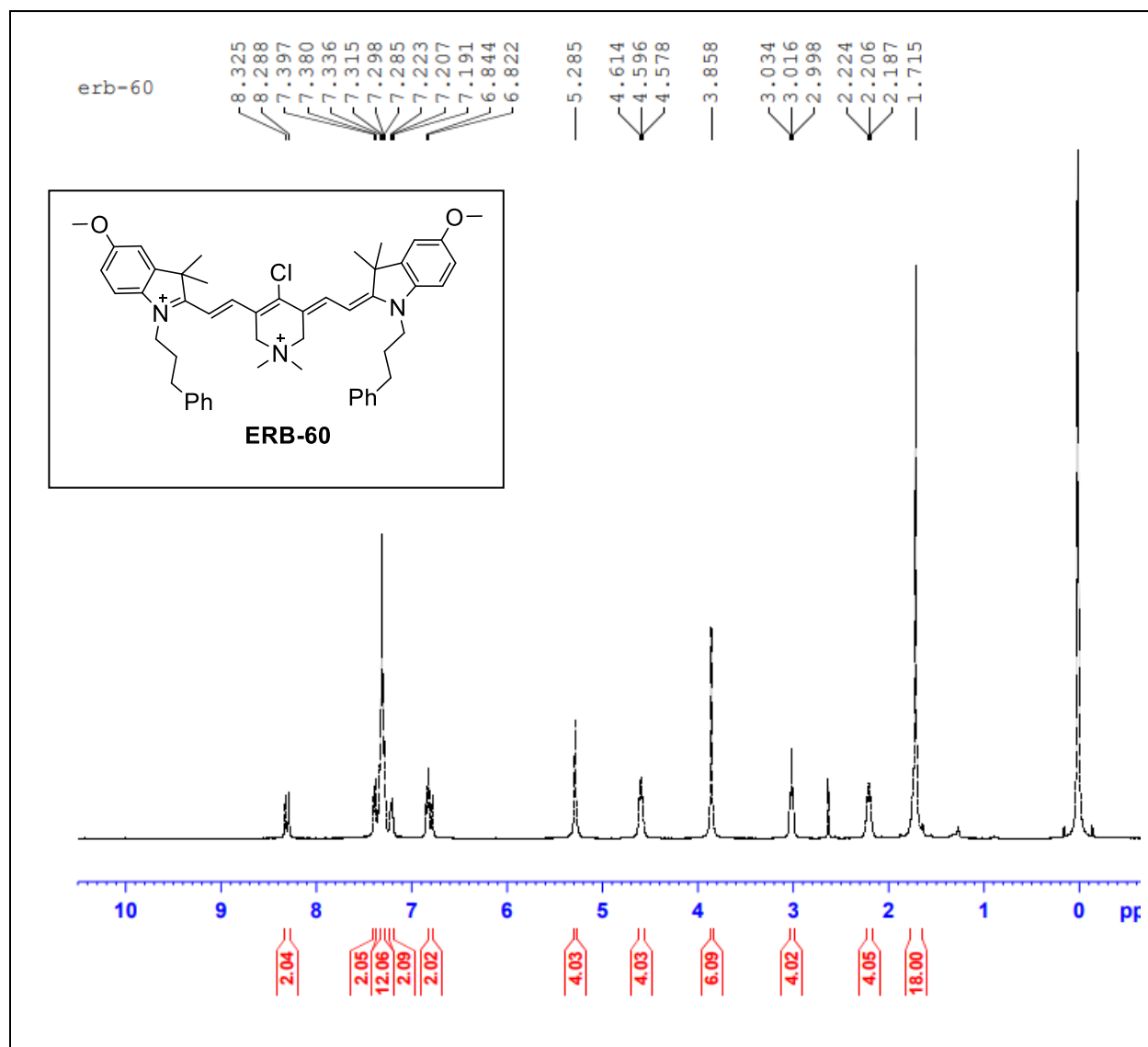


Figure S1. ^1H NMR spectrum of **ERB-60**.

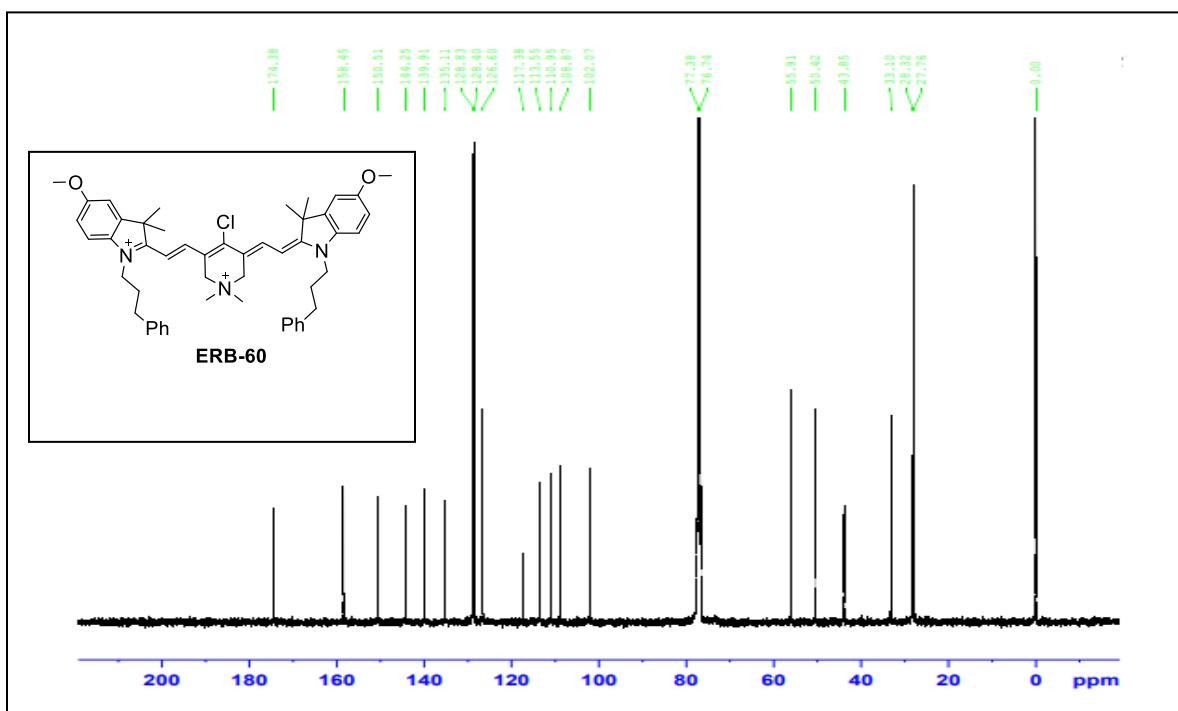
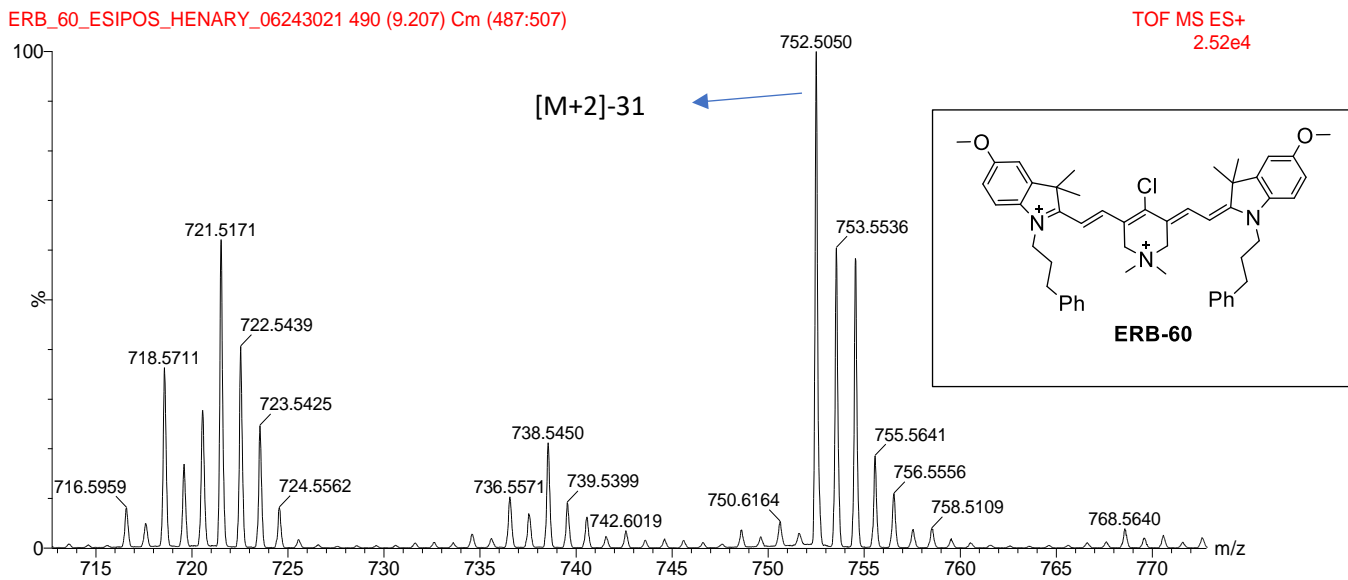


Figure S2. ^{13}C NMR Spectrum of ERB-60.

ERB_60_ESIPOS_HENARY_06243021 490 (9.207) Cm (487:507)



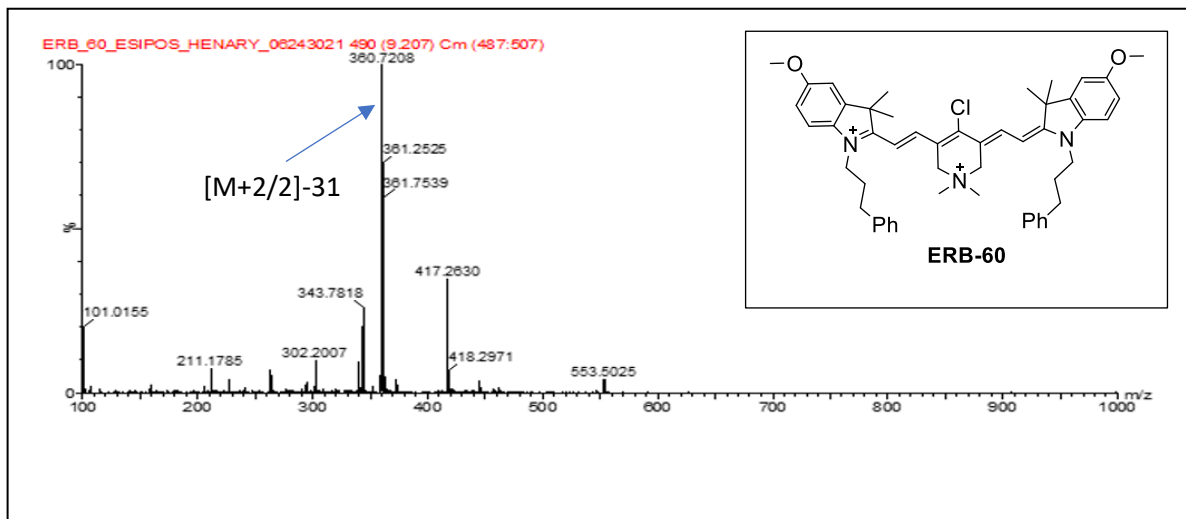
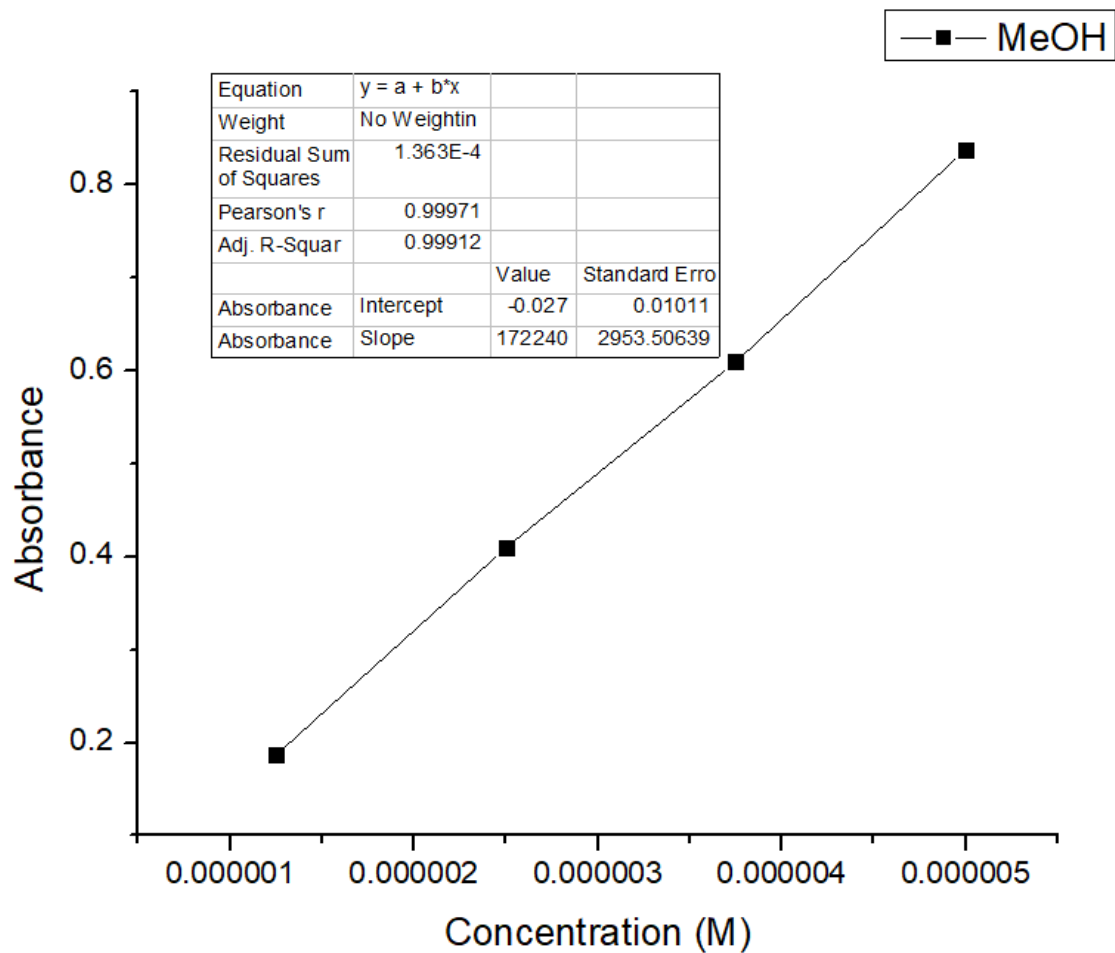


Figure S3. Mass Spectrum of ERB-60 with the removal of one Methoxy group.



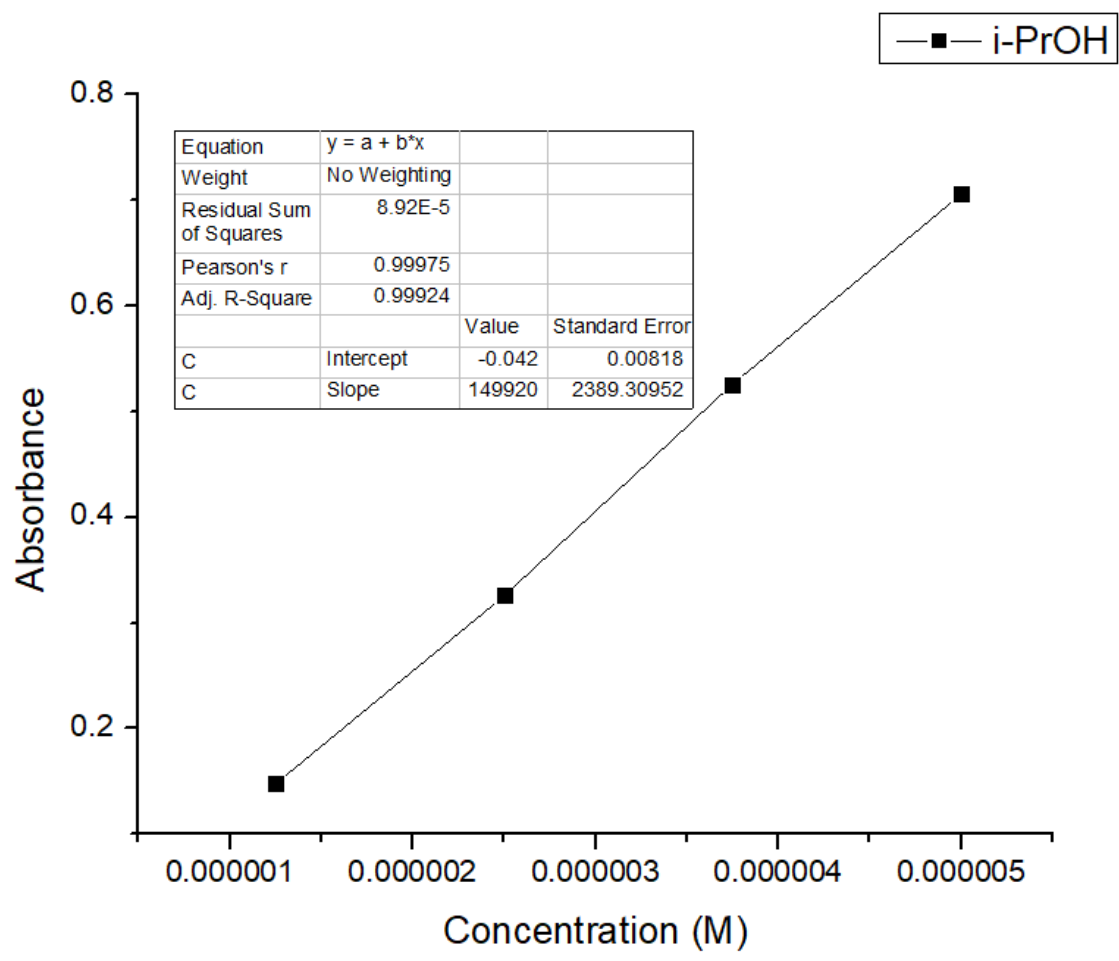
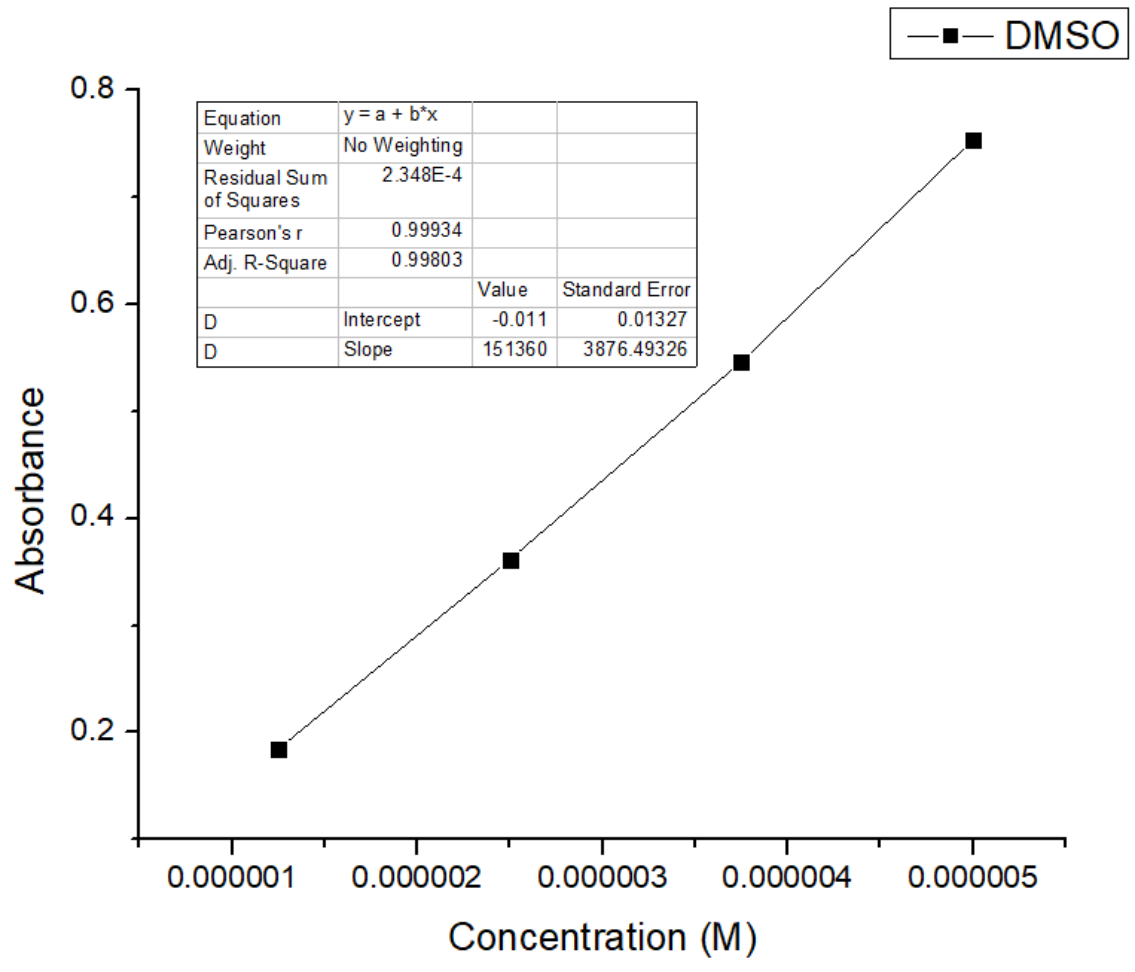


Figure S4. A linear regression plot of **ERB-60** in MeOH and *i*-PrOH.



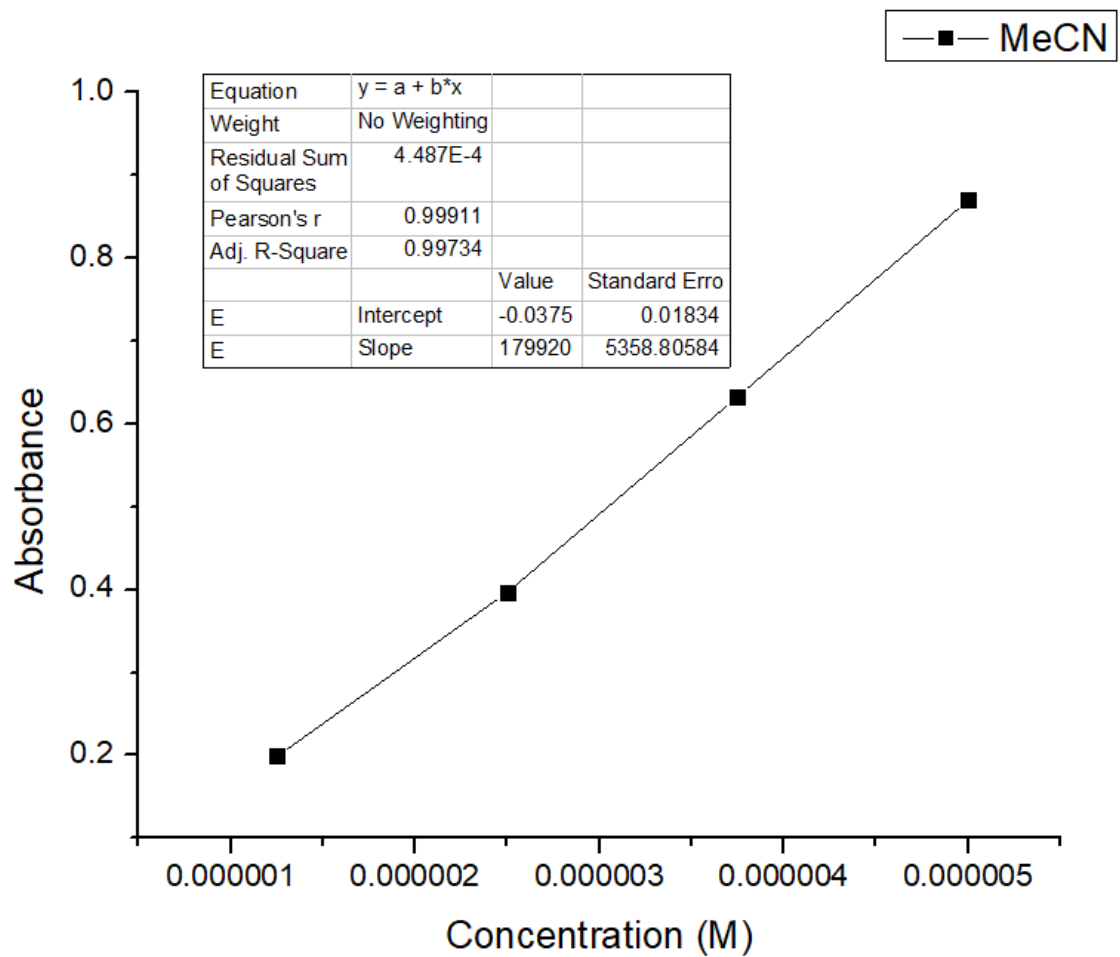
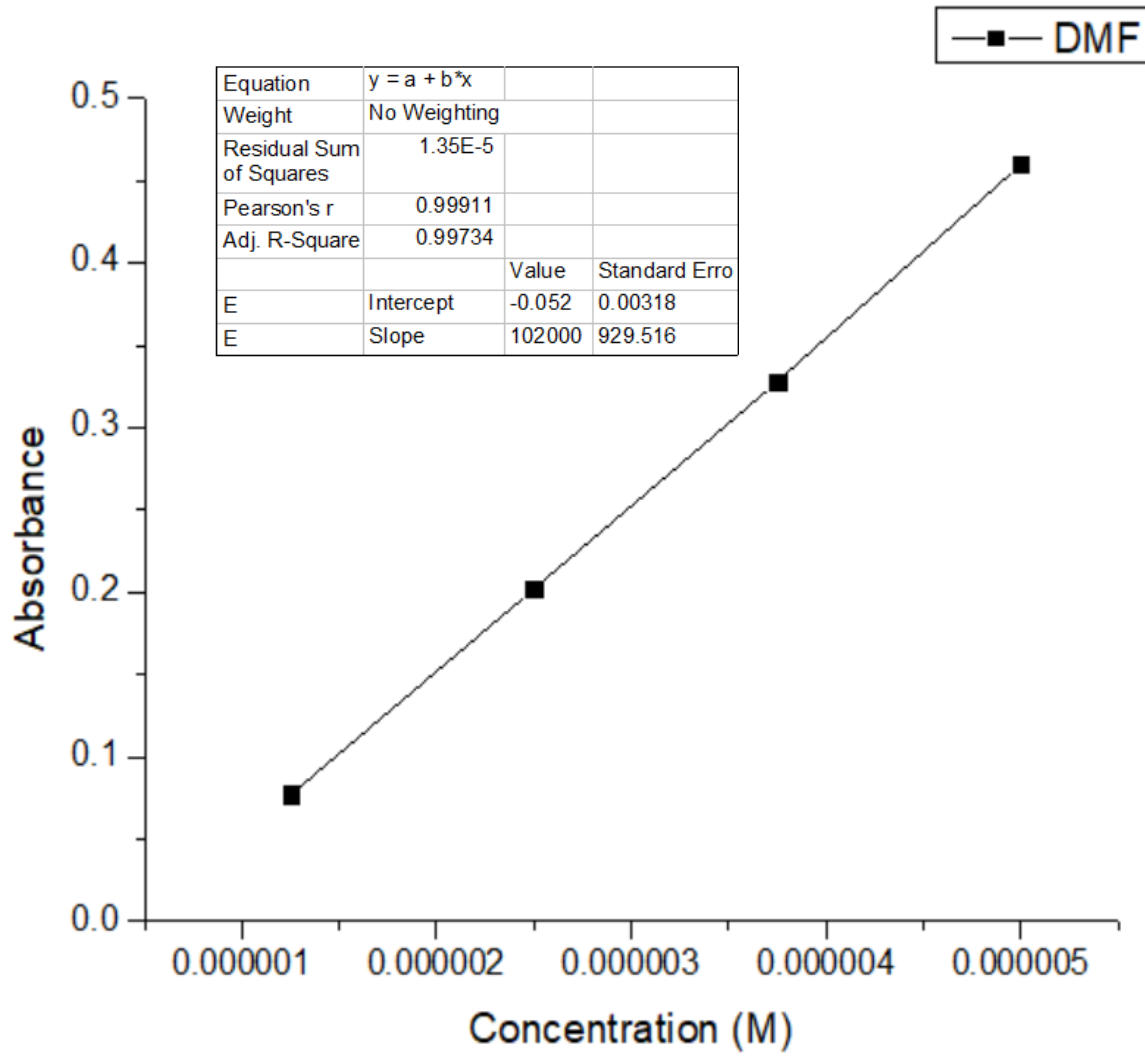


Figure S5. A linear regression plot of **ERB-60** in DMSO and MeCN.



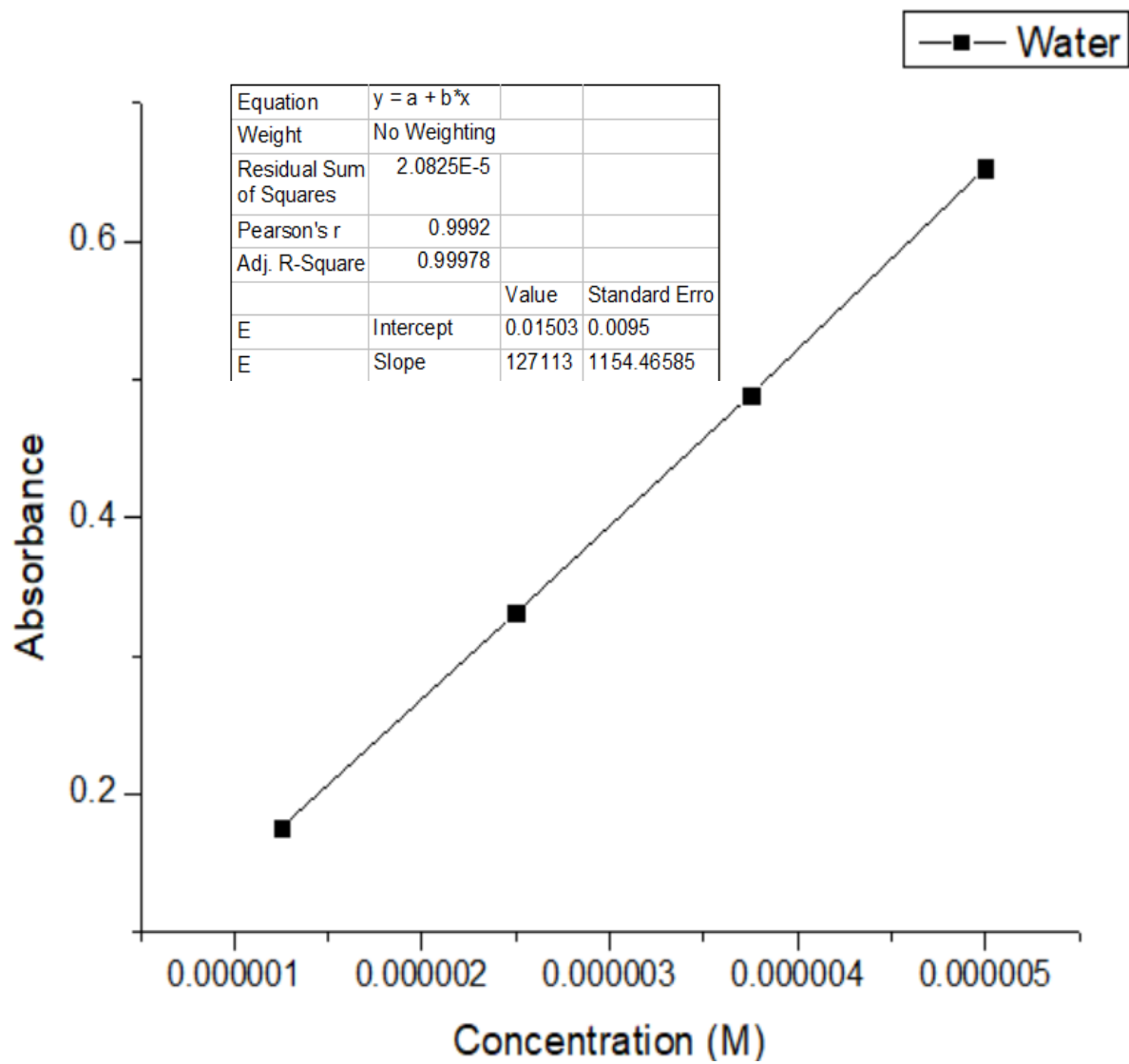


Figure S6. A linear regression plot of **ERB-60** in DMF and Water.