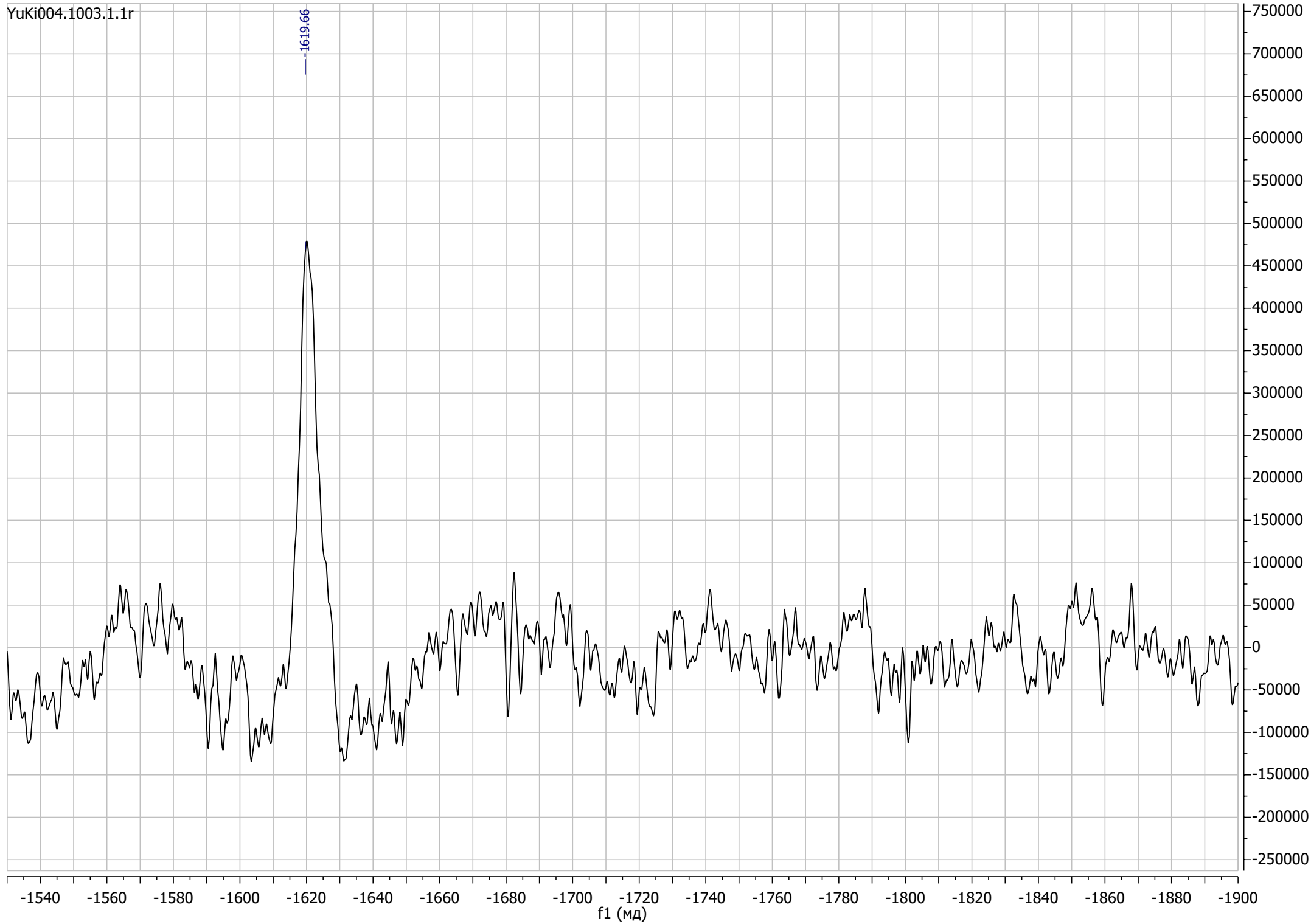


YuKi004.1003.1.1r



Display Report

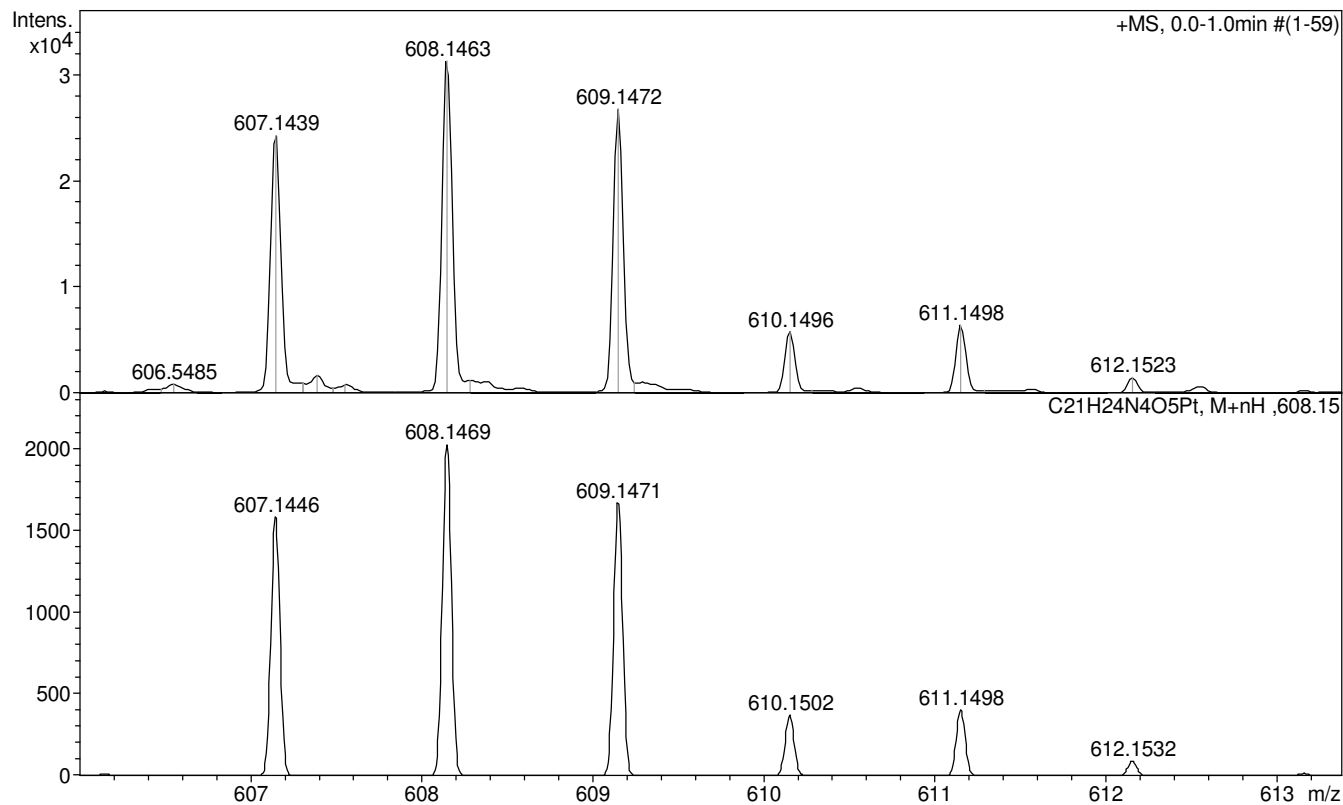
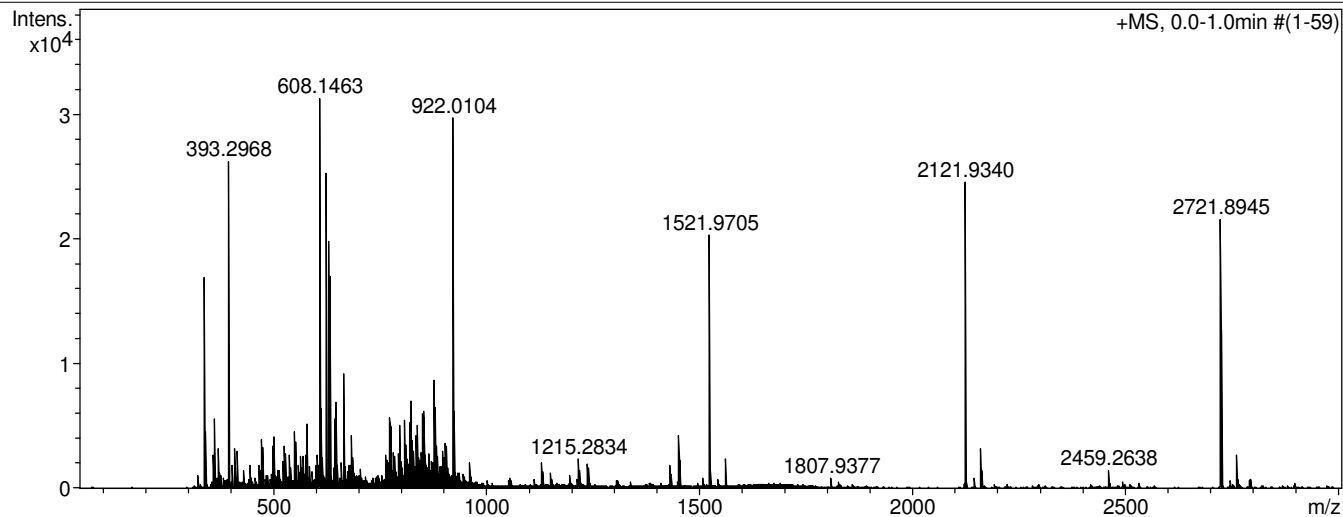
Analysis Info

Analysis Name D:\Data\Chizhov\Chem_Dept\Milaeva\Podrugina\Nov_07_2022\yuki004_&clb.d
Method tune_wide.m
Sample Name /CHIZ yuki004
Comment CH3CN 100 %, dil. 200, calibrant added

Acquisition Date 07.11.2022 13:25:34
Operator BDAL@DE
Instrument / Ser# micrOTOF 10248

Acquisition Parameter

Source Type	ESI	Ion Polarity	Positive	Set Nebulizer	0.4 Bar
Focus	Not active			Set Dry Heater	180 °C
Scan Begin	50 m/z	Set Capillary	4500 V	Set Dry Gas	4.0 l/min
Scan End	3000 m/z	Set End Plate Offset	-500 V	Set Divert Valve	Waste



Display Report

Analysis Info

Analysis Name D:\Data\Chizhov\Chem_Dept\Milaeva\Podrugina\Nov_07_2022\yuki004_&clb.d
Method tune_wide.m
Sample Name /CHIZ yuki004
Comment CH3CN 100 %, dil. 200, calibrant added

Acquisition Date 07.11.2022 13:25:34
Operator BDAL@DE
Instrument / Ser# micrOTOF 10248

Acquisition Parameter

Source Type	ESI	Ion Polarity	Positive	Set Nebulizer	0.4 Bar
Focus	Not active			Set Dry Heater	180 °C
Scan Begin	50 m/z	Set Capillary	4500 V	Set Dry Gas	4.0 l/min
Scan End	3000 m/z	Set End Plate Offset	-500 V	Set Divert Valve	Waste

