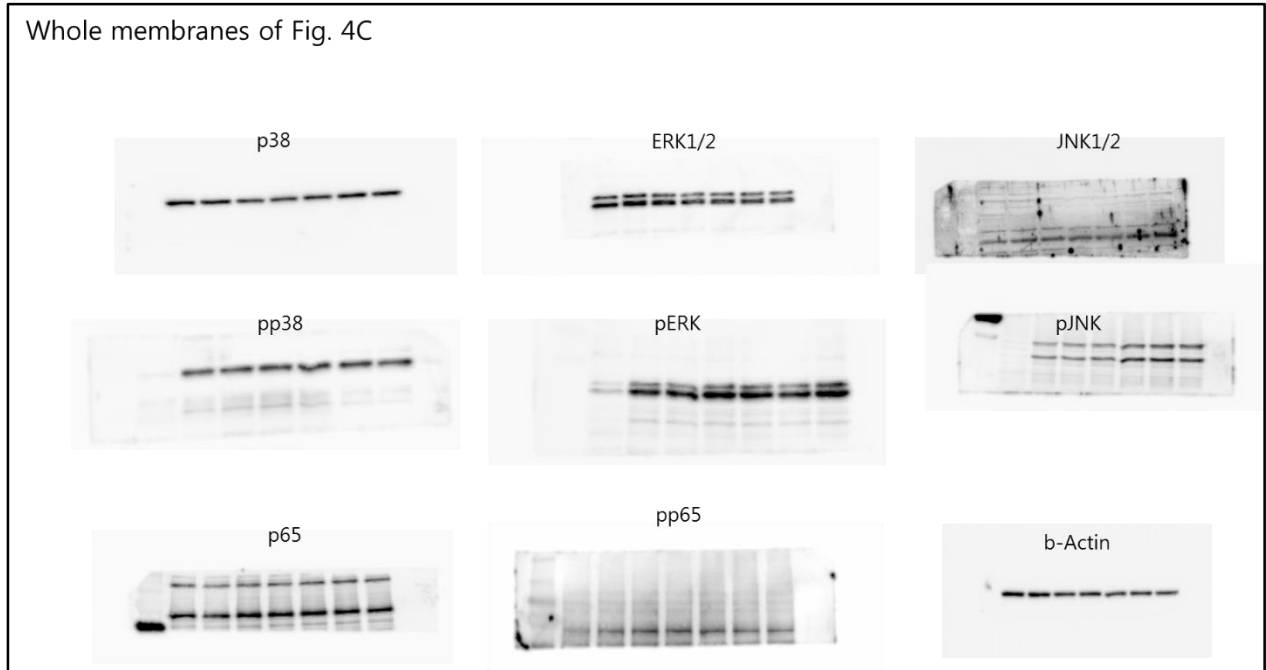


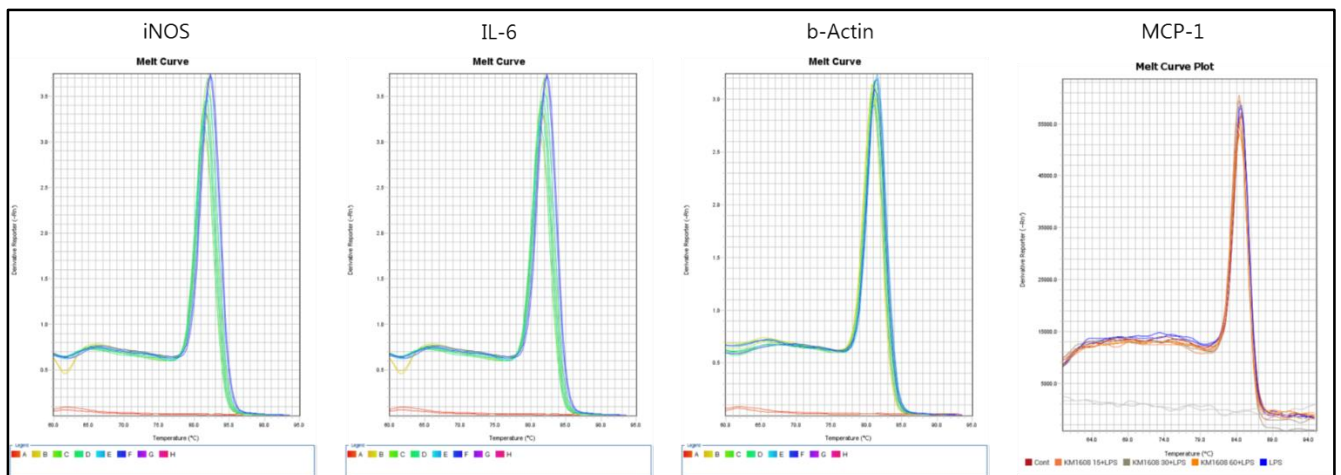
# Supplemental experimental Information

## 1. Whole western blot membranes of Fig 5C.

Whole membranes of Fig. 4C



## 2. Melt curve of Fig 3



### 3. Antibody source and usage information for western blots.

<b>Antibody</b>	<b>Dilution</b>	<b>Catalog number</b>	<b>Sources</b>
iNOS (D6B6S)	1:1000	#13120	Cell Signaling Technology, Denver, MA, USA
Phospho-ERK1/2 (T202/Y204)	1:2500	#4370	Cell Signaling Technology, Denver, MA, USA
Phospho-JNK (T183/Y185)	1:2500	#4671	Cell Signaling Technology, Denver, MA, USA
Phospho-p38 (T180/Y182)	1:2500	#4511	Cell Signaling Technology, Denver, MA, USA
Phospho-p65 (S536)	1:2500	#3033	Cell Signaling Technology, Denver, MA, USA
Phospho-c-Jun (S73)	1:2500	#13038	Cell Signaling Technology, Denver, MA, USA
phospho-Akt (T308)	1:2000	#13038	Cell Signaling Technology, Denver, MA, USA
c-Jun (60A8)	1:2000	#9165	Cell Signaling Technology, Denver, MA, USA
Akt	1:2000	#9272	Cell Signaling Technology, Denver, MA, USA
ERK1 (C-16)	1:3000	SC-93	Santa Cruz Biotechnologies, Santa Cruz, CA, USZ
JNK (FL)	1:1000	SC-571	Santa Cruz Biotechnologies, Santa Cruz, CA, USZ
p38 (C-20)	1:2500	SC-535	Santa Cruz Biotechnologies, Santa Cruz, CA, USZ
p65 (C-20)	1:2500	SC-372	Santa Cruz Biotechnologies, Santa Cruz, CA, USZ
b-Actin (I-19)	1:3000	SC-1616	Santa Cruz Biotechnologies, Santa Cruz, CA, USZ