

Supporting Information

Sulfonylimino group transfer reaction using imino- λ^3 -iodanes with I₂ under metal-free conditions

Akira Yoshimura ^{1,2,*}, Cody L. Makitalo ², Melissa E. Jarvi ², Michael T. Shea ², Pavel S. Postnikov ¹, Gregory T. Rohde ³, Viktor V. Zhdankin ², Akio Saito ⁴, and Mekhman S. Yusubov ¹

¹ The Tomsk Polytechnic University, 634050 Tomsk, Russia

² Department of Chemistry and Biochemistry, University of Minnesota Duluth, MN 55812, USA

³ Marshall School, Duluth, Minnesota 55811 USA

⁴ Division of Applied Chemistry, Institute of Engineering, Tokyo University of Agriculture and Technology, 2-24-16 Naka-cho, Koganei, Tokyo 184-8588, Japan

* Correspondence: yoshimura@tpu.ru; ayoshimu@d.umn.edu

Table of Contents:	pp
1. <i>X-Ray crystallography data of 5</i>	p.2
2. <i>Spectra of products</i>	p.3

X-Ray crystallography data of 5

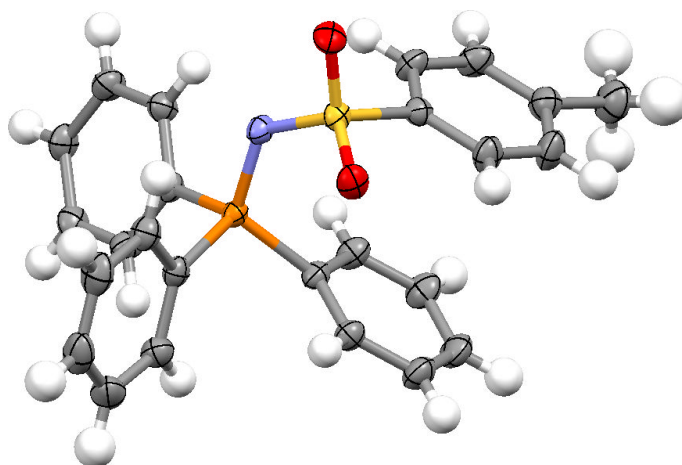


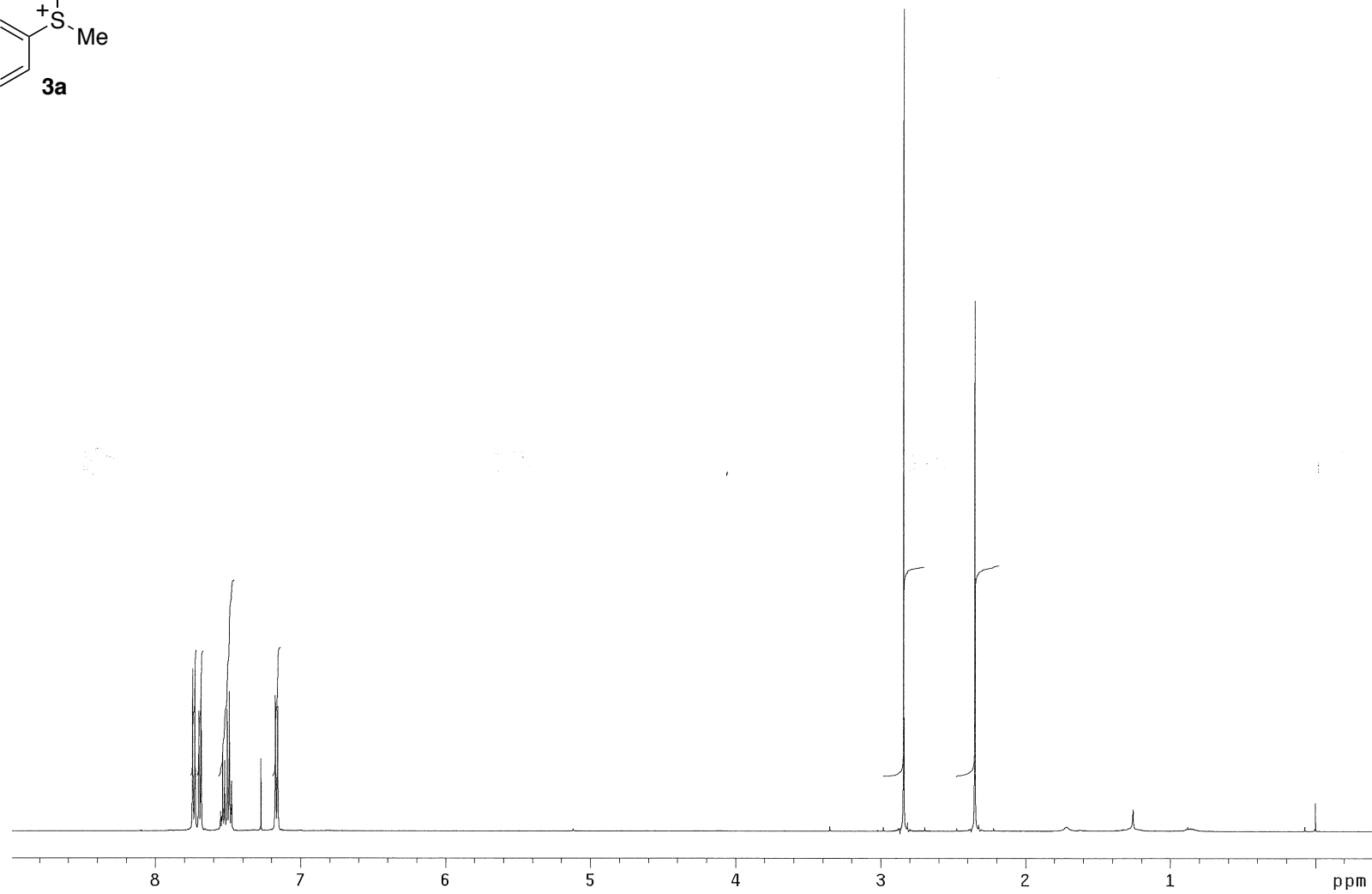
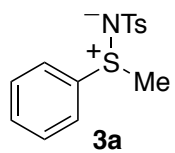
Figure S1. X-Ray crystal structure of **5**.

Single crystals of product **5** suitable for X-ray crystallographic analysis were obtained by slow crystallization from dichloromethane solution. X-ray diffraction data for **5** were collected on Rigaku RAPID II Image Plate using graphite-monochromated MoK α radiation ($\lambda = 0.71073 \text{ \AA}$) at 173 K. The unit cell of 8.9064(5), 10.5791(6), 13.0086(9), 99.870(7), 107.920(8) and bond metrics for **5** matched the previously reported compound.¹

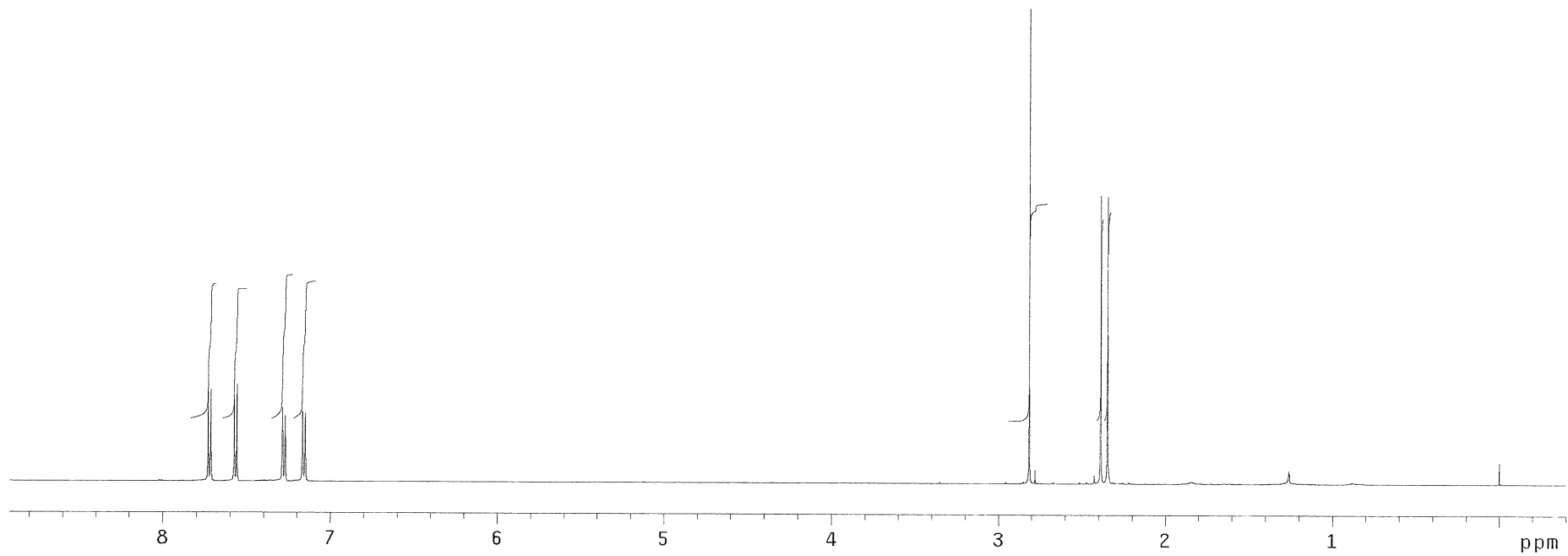
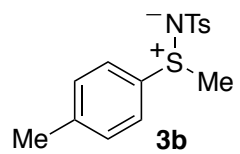
Reference

Cameron, A. F.; Hair, N. J.; Morris, D. G. Structural investigations of ylides. IV. Crystal and molecular structure of N-(*p*-toluenesulfonyl)iminotriphenylphosphorane. *Acta Crystallogr., Sect. B* **1974**, *30*, 221-225.

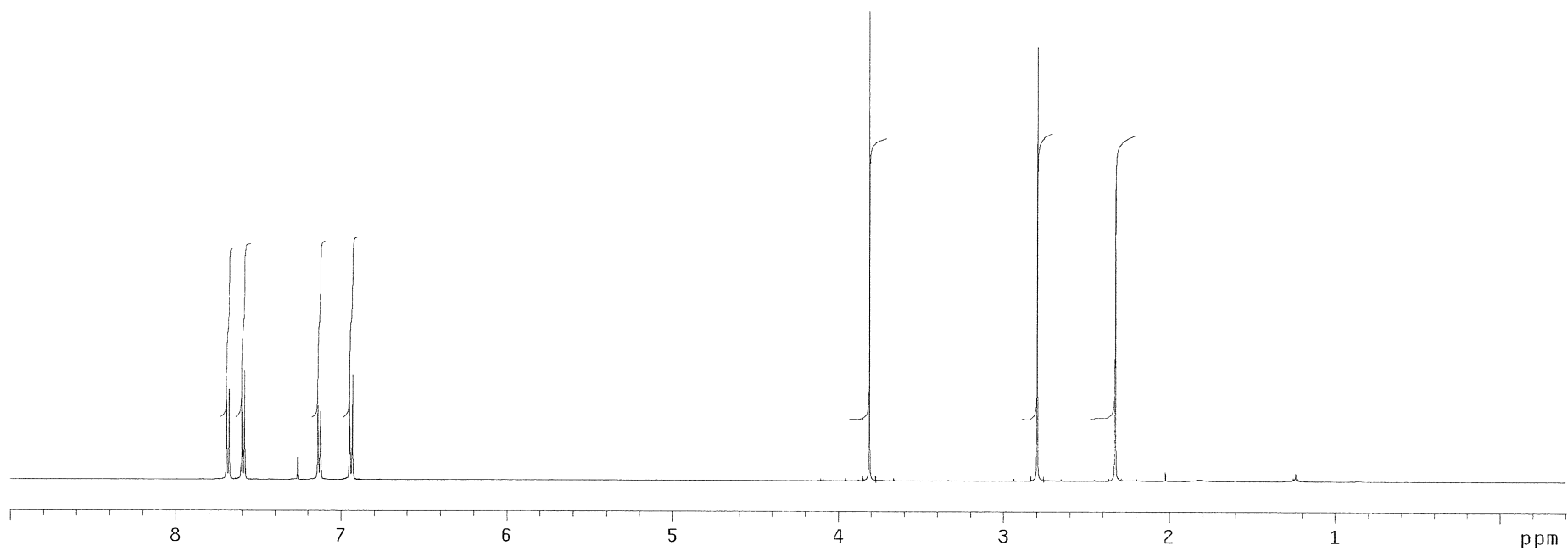
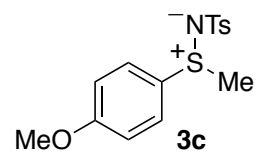
^1H NMR (500 MHz, CDCl_3)



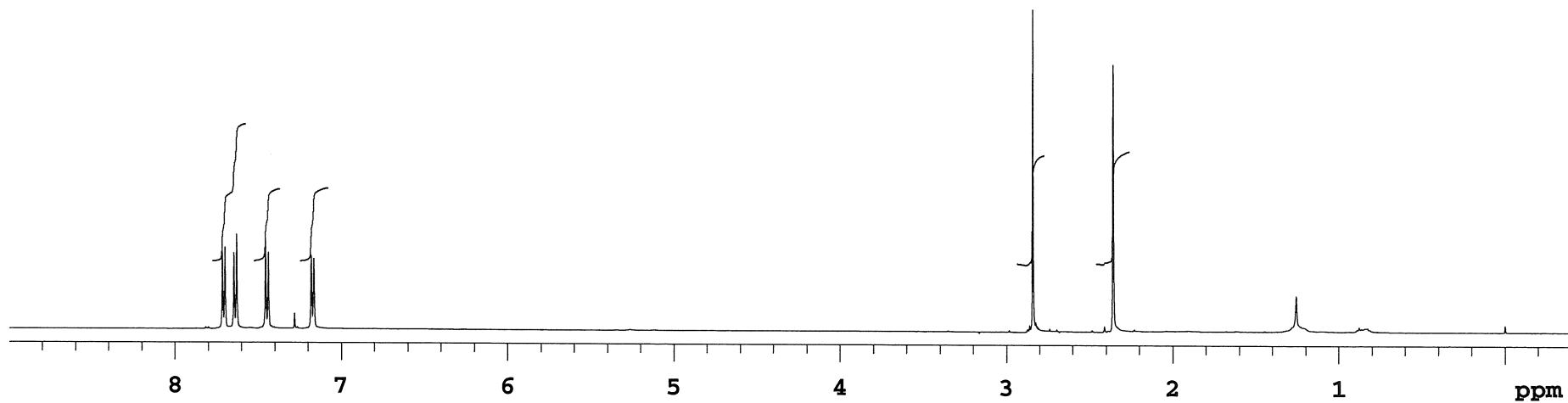
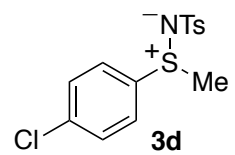
^1H NMR (500 MHz, CDCl_3)



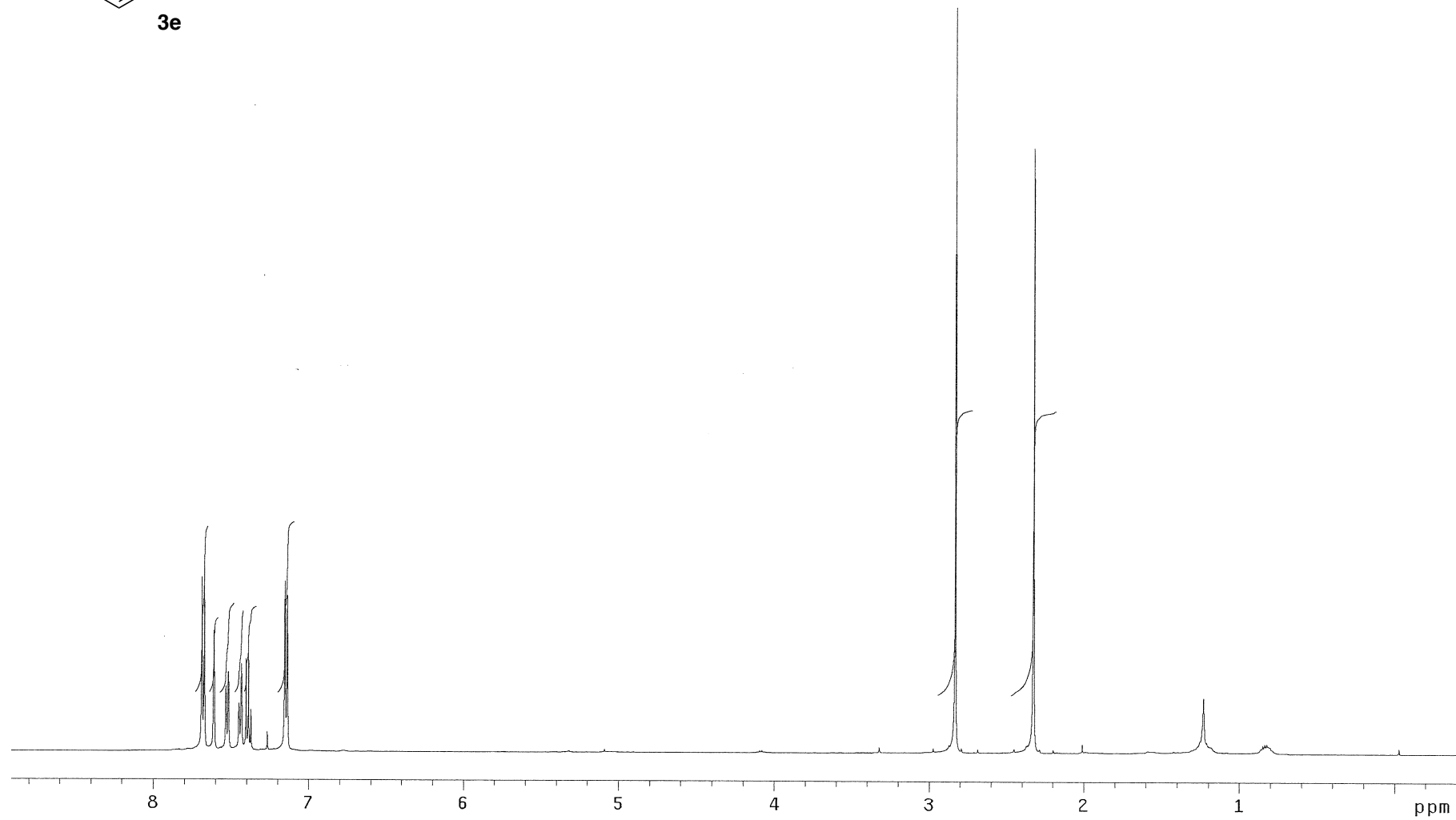
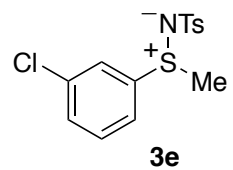
^1H NMR (500 MHz, CDCl_3)



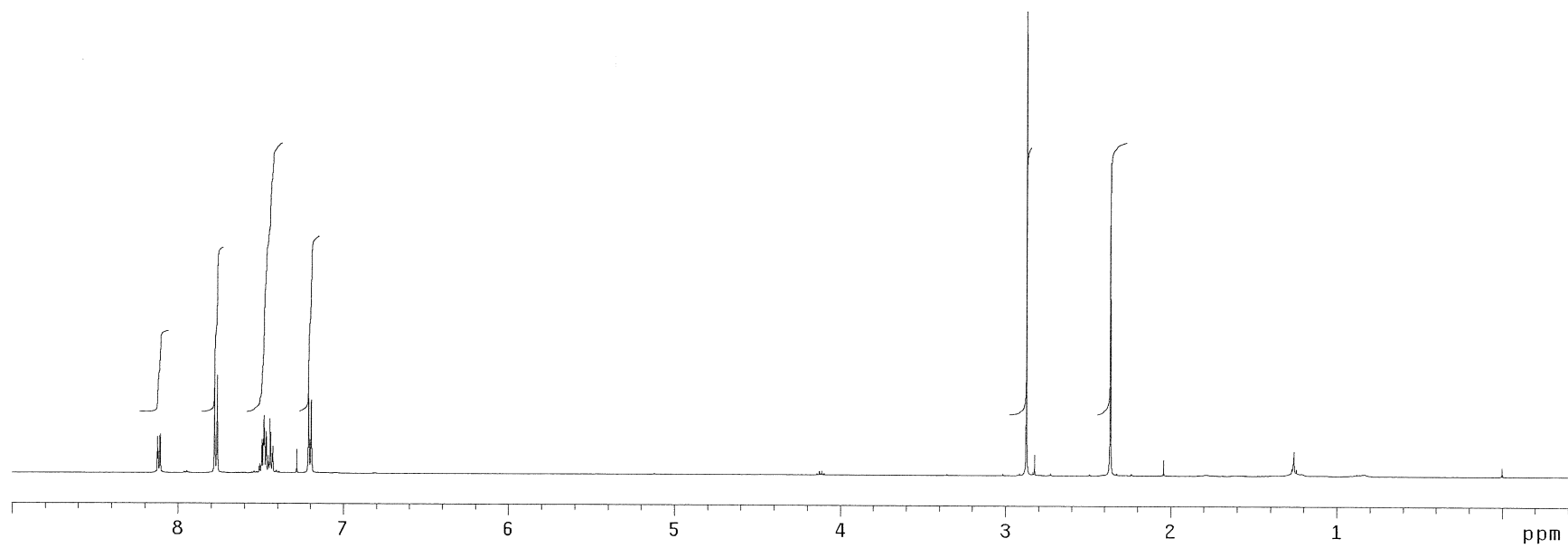
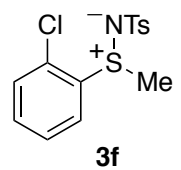
^1H NMR (500 MHz, CDCl_3)



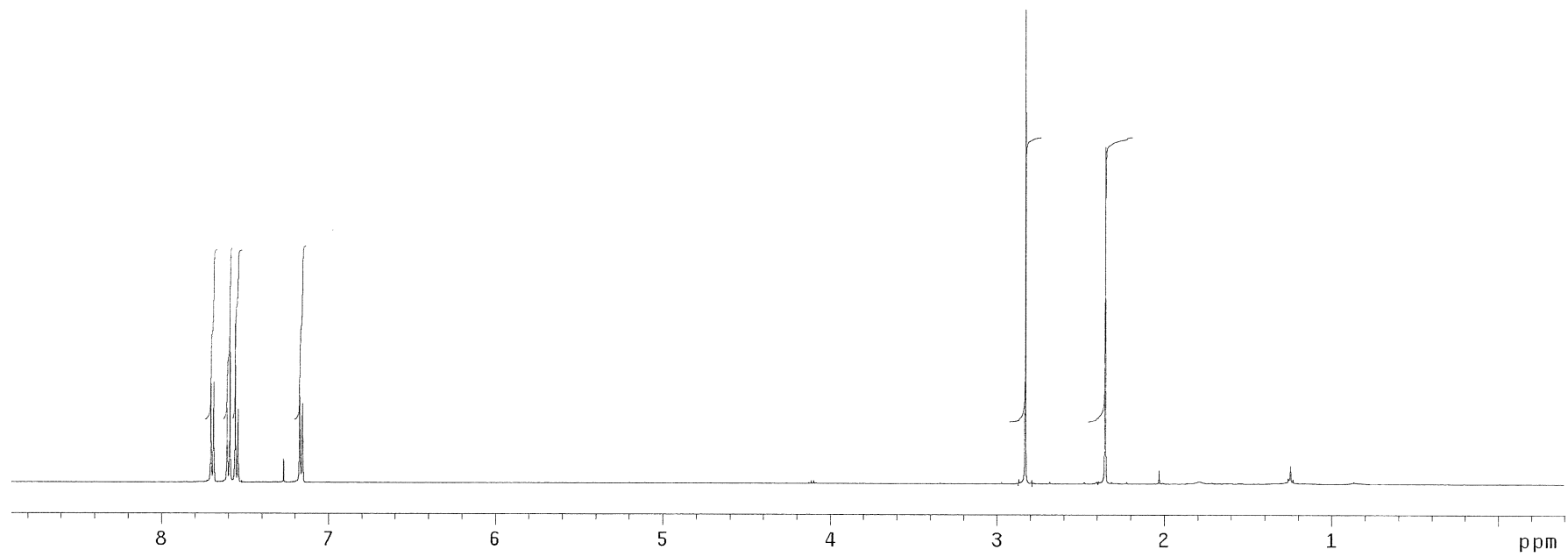
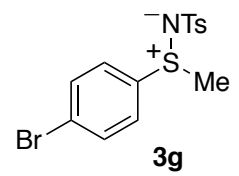
^1H NMR (500 MHz, CDCl_3)



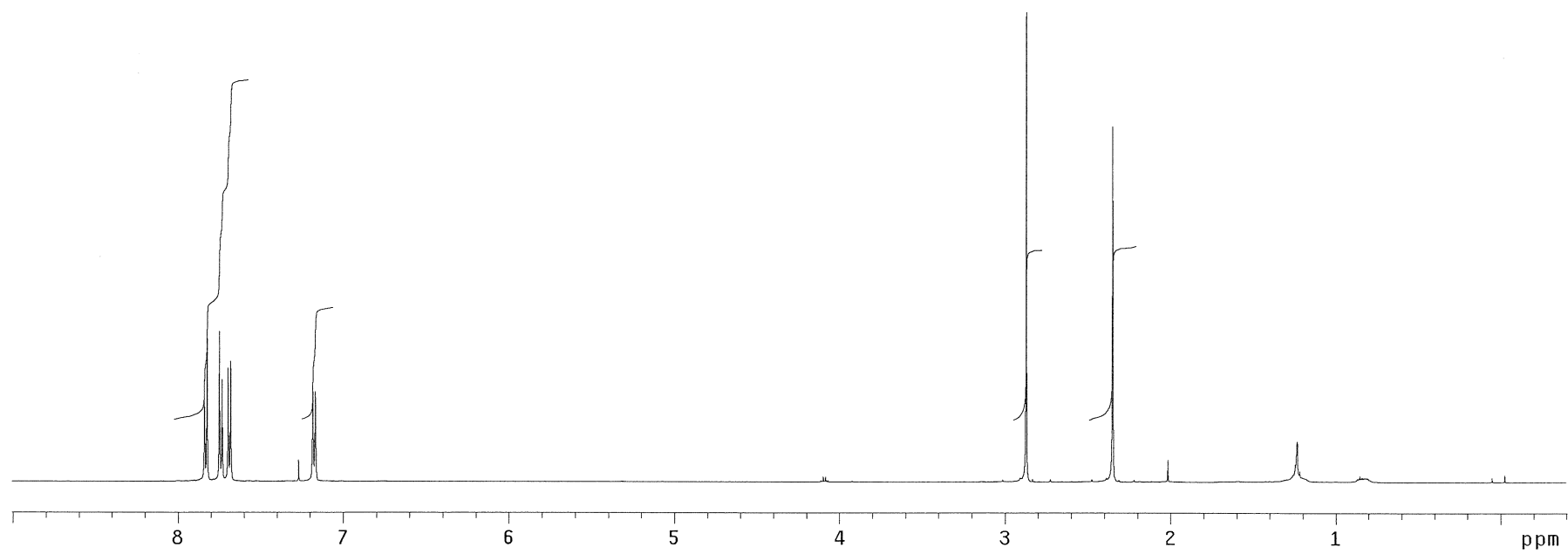
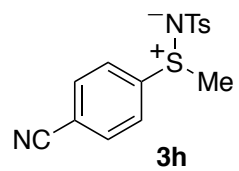
^1H NMR (500 MHz, CDCl_3)



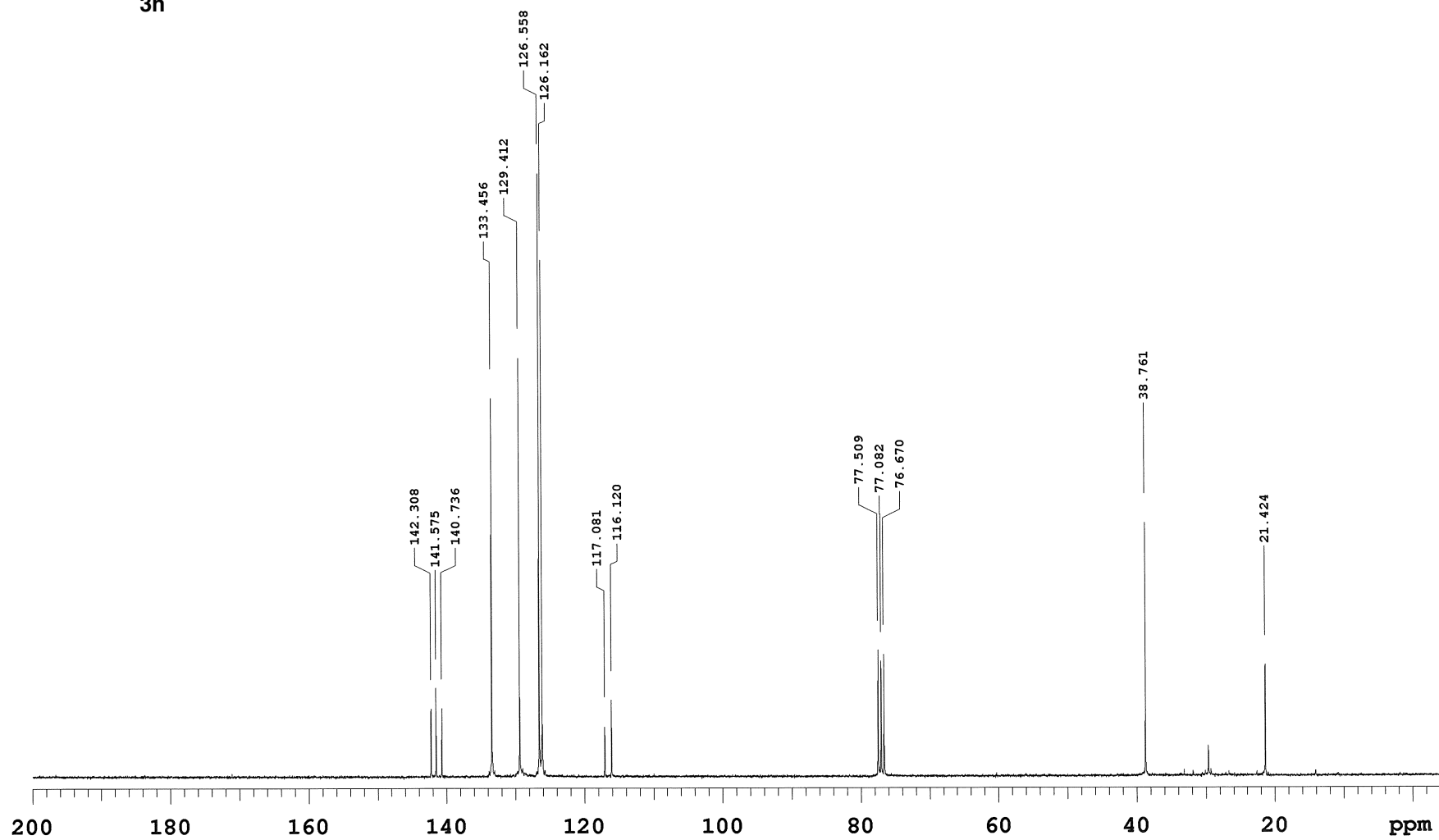
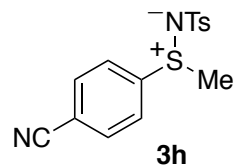
^1H NMR (500 MHz, CDCl_3)



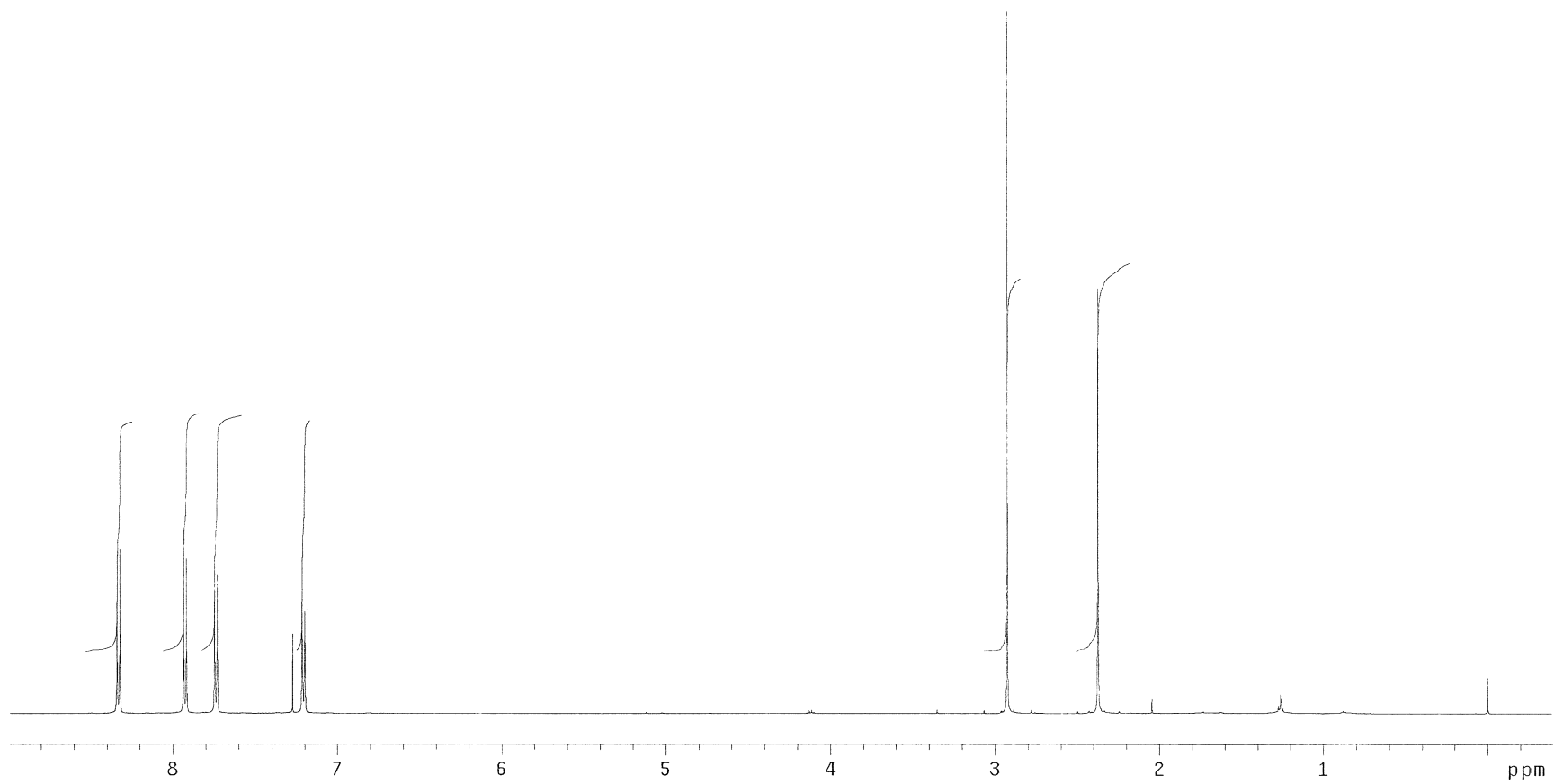
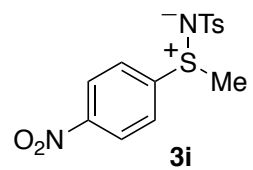
^1H NMR (500 MHz, CDCl_3)



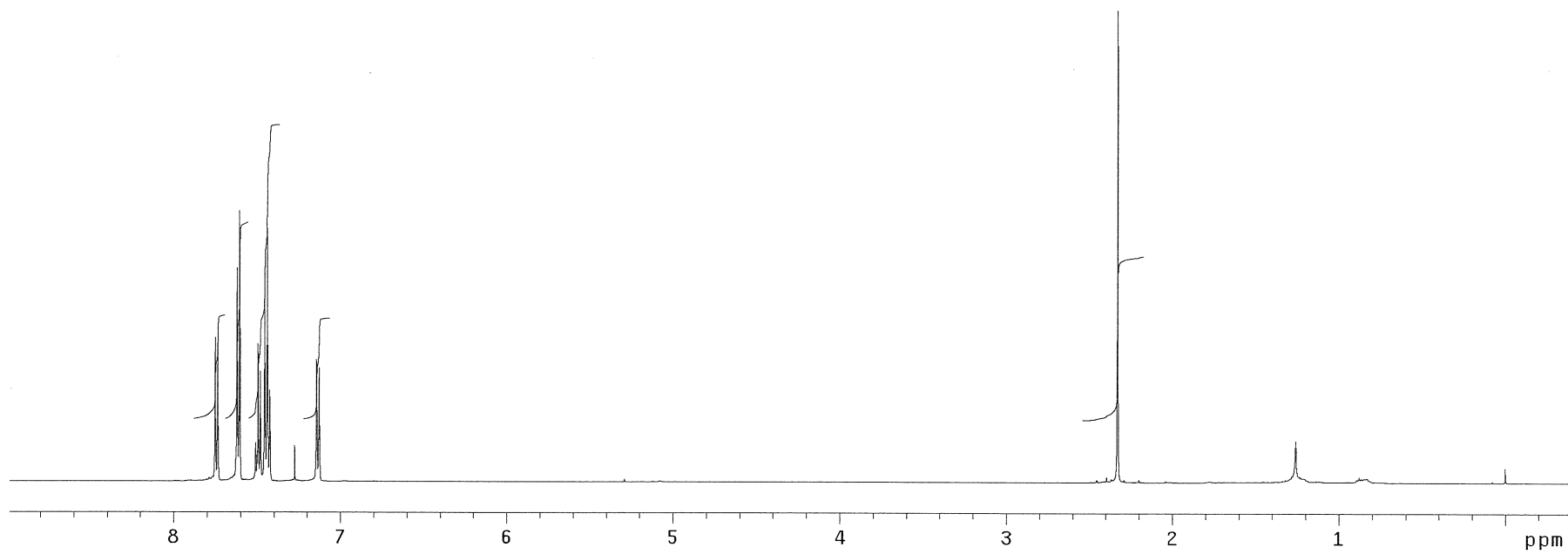
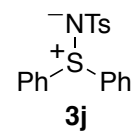
^{13}C NMR (75 MHz, CDCl_3)



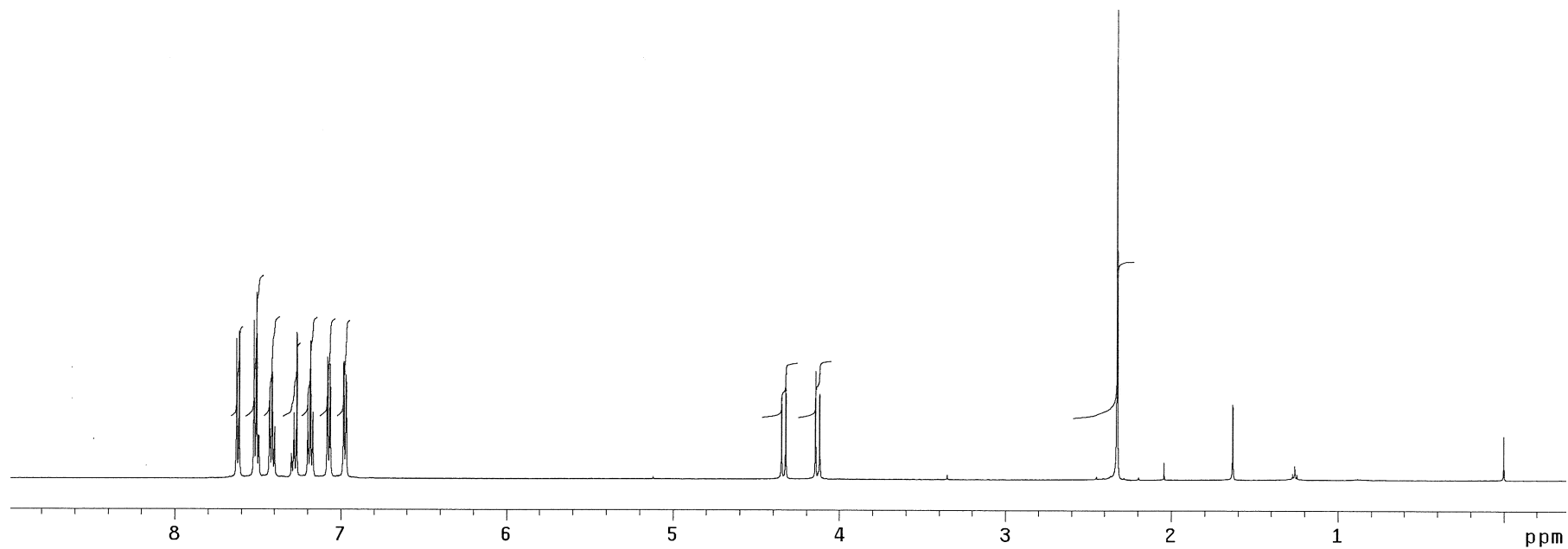
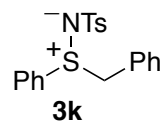
^1H NMR (500 MHz, CDCl_3)



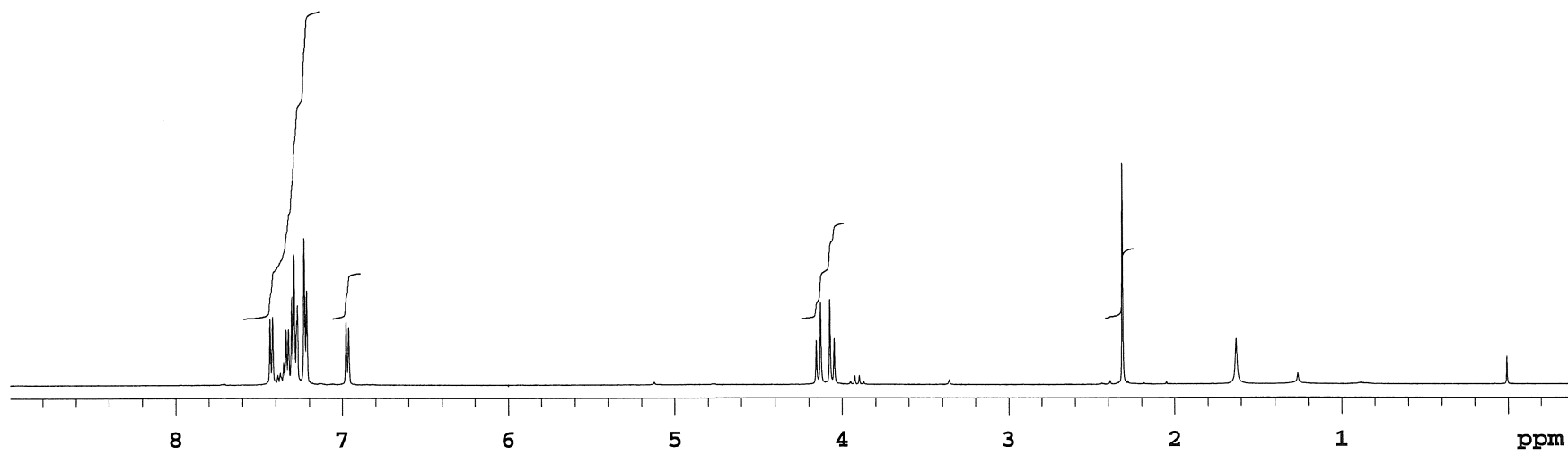
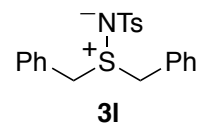
^1H NMR (500 MHz, CDCl_3)



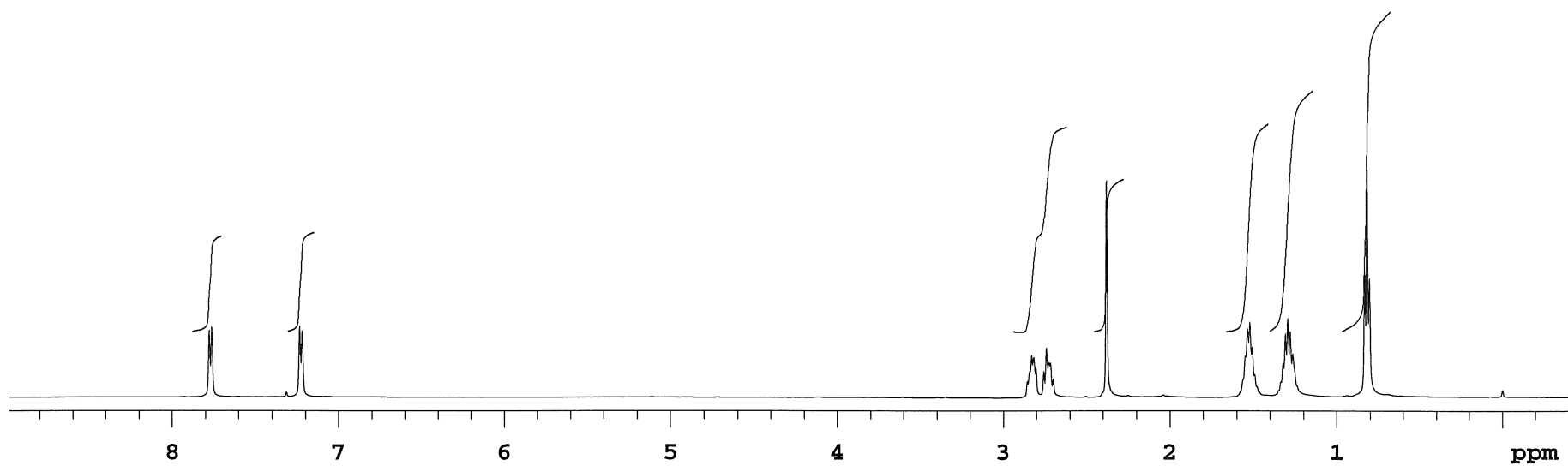
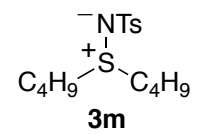
^1H NMR (500 MHz, CDCl_3)



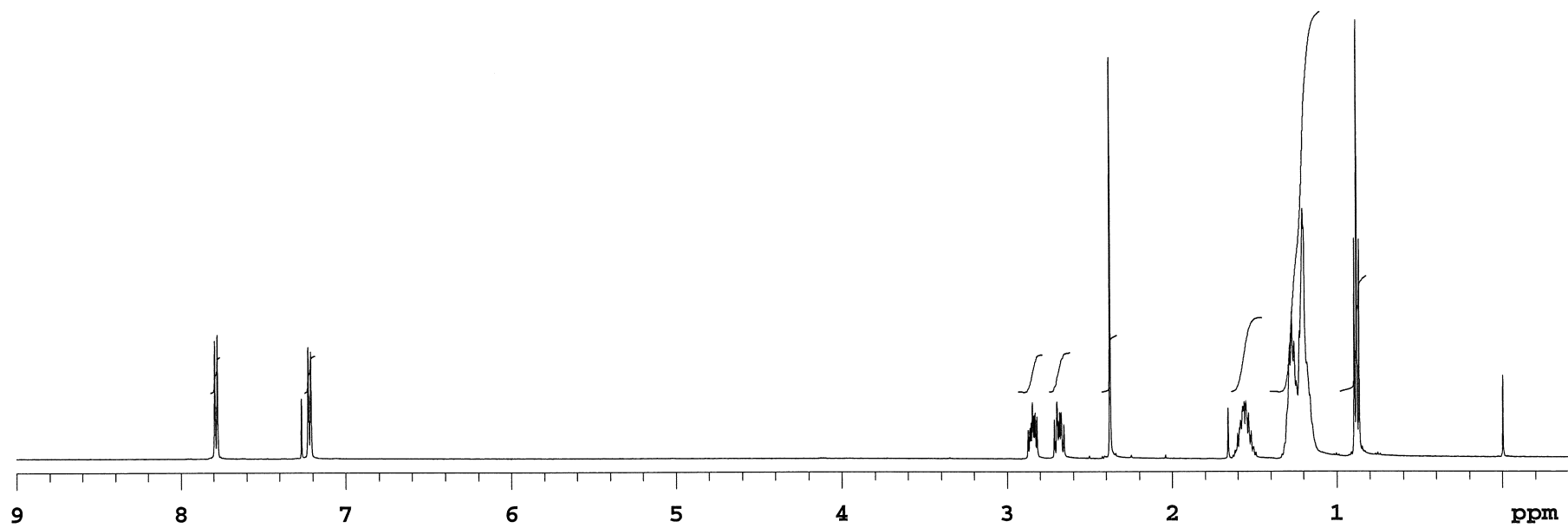
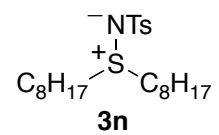
^1H NMR (500 MHz, CDCl_3)



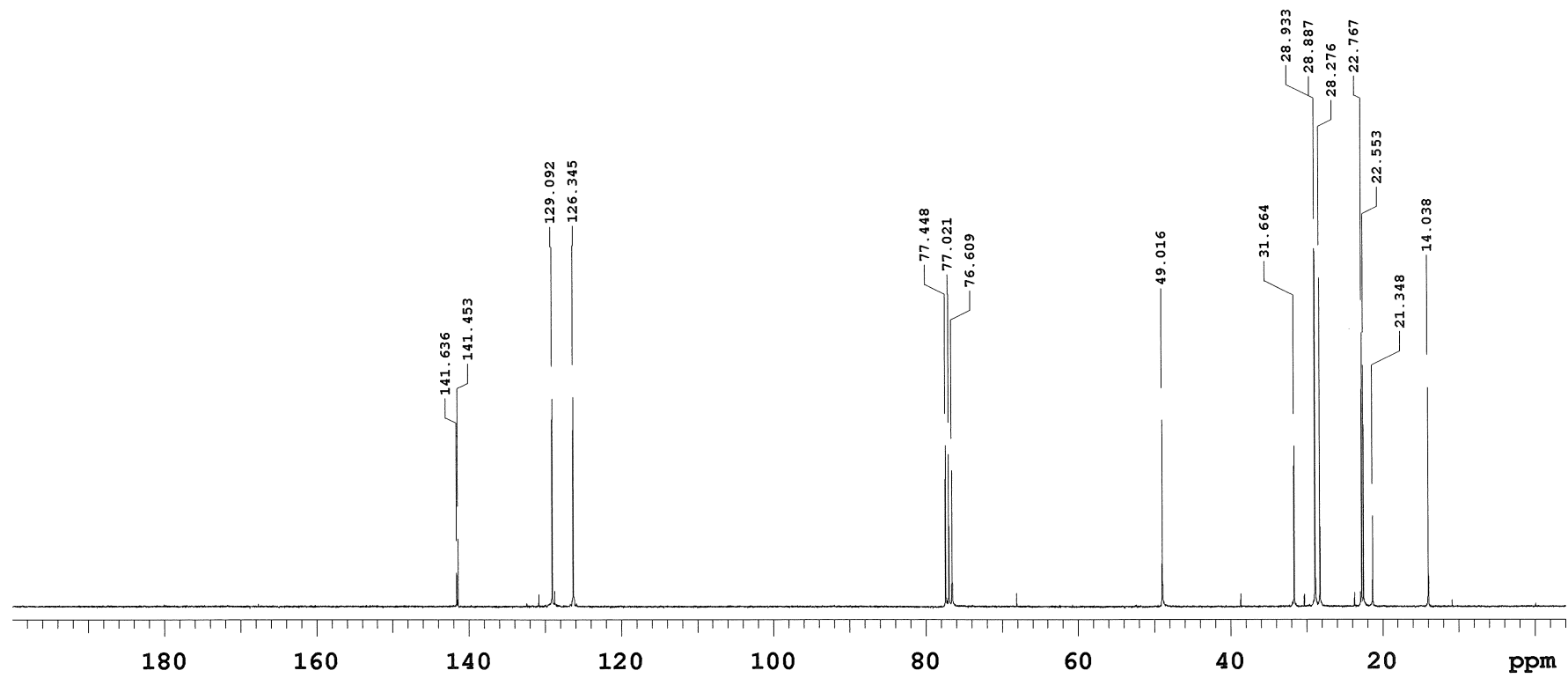
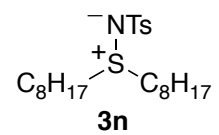
^1H NMR (500 MHz, CDCl_3)



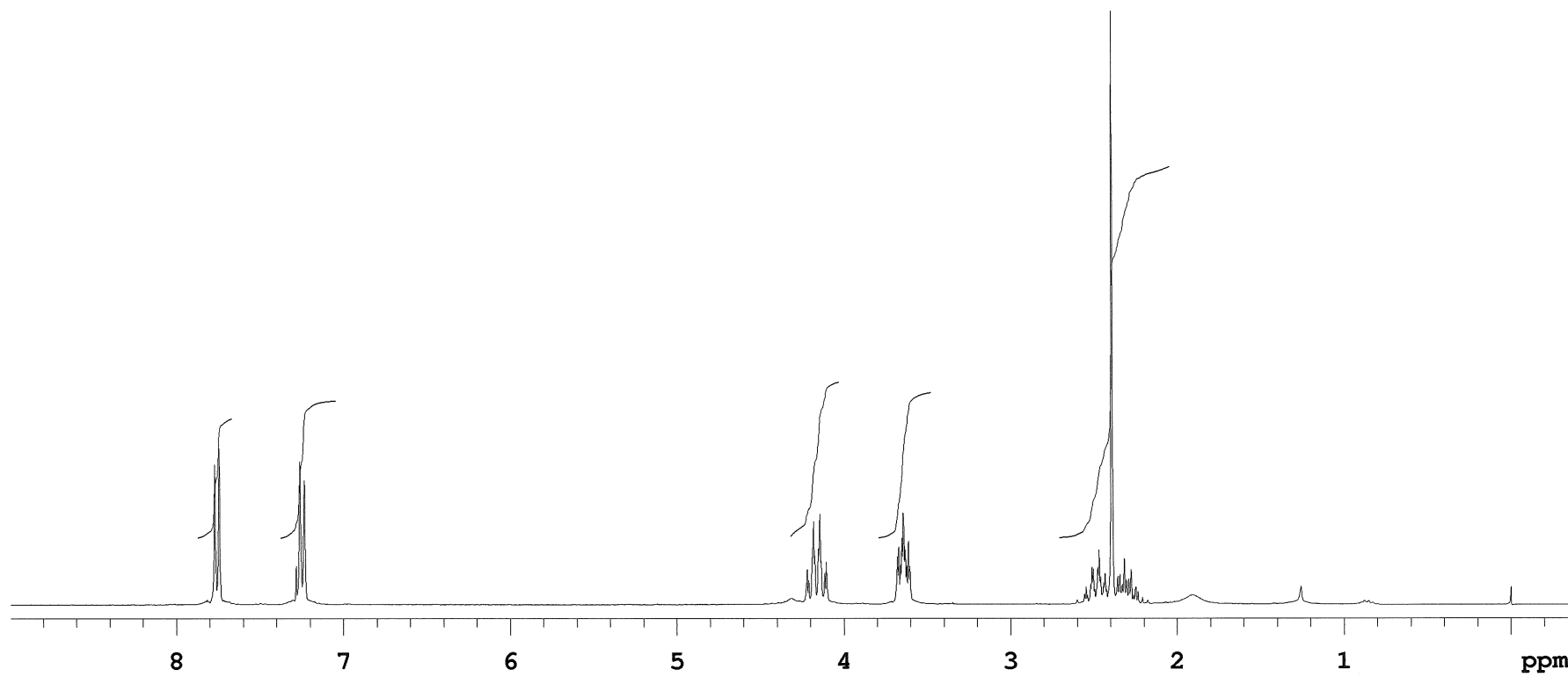
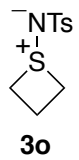
^1H NMR (500 MHz, CDCl_3)



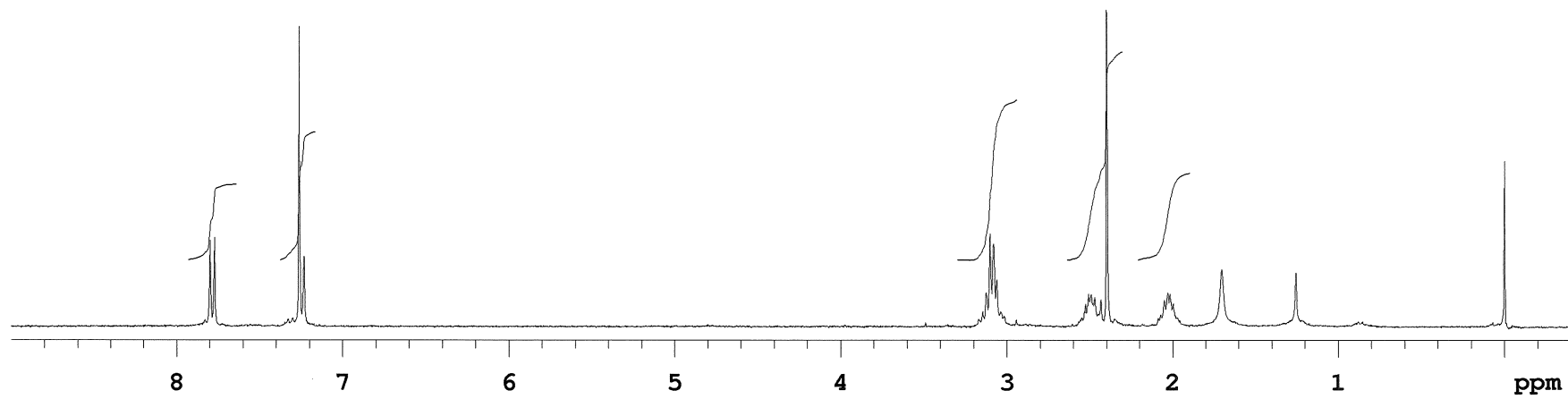
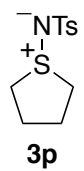
^{13}C NMR (75 MHz, CDCl_3)



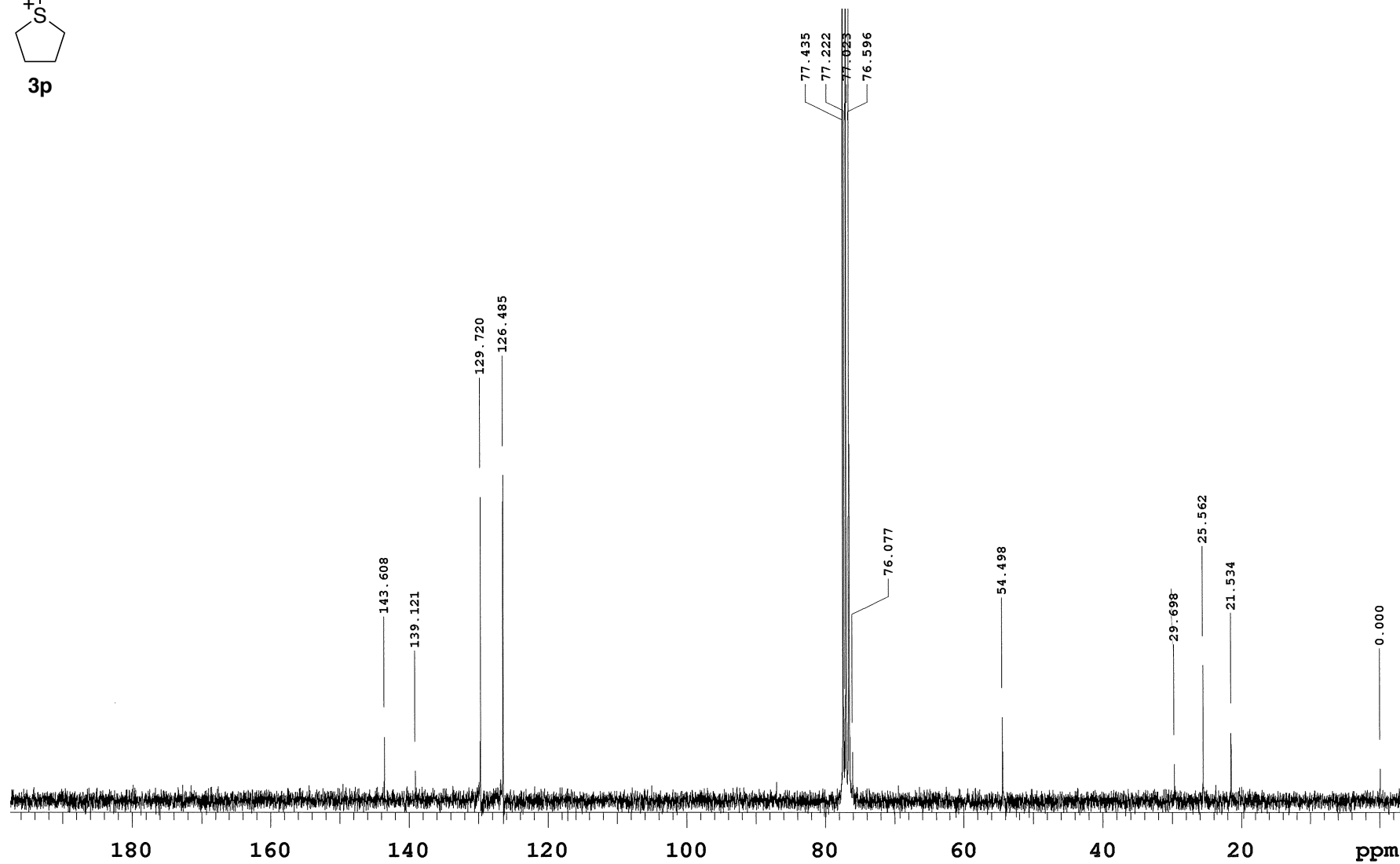
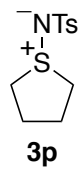
^1H NMR (300 MHz, CDCl_3)



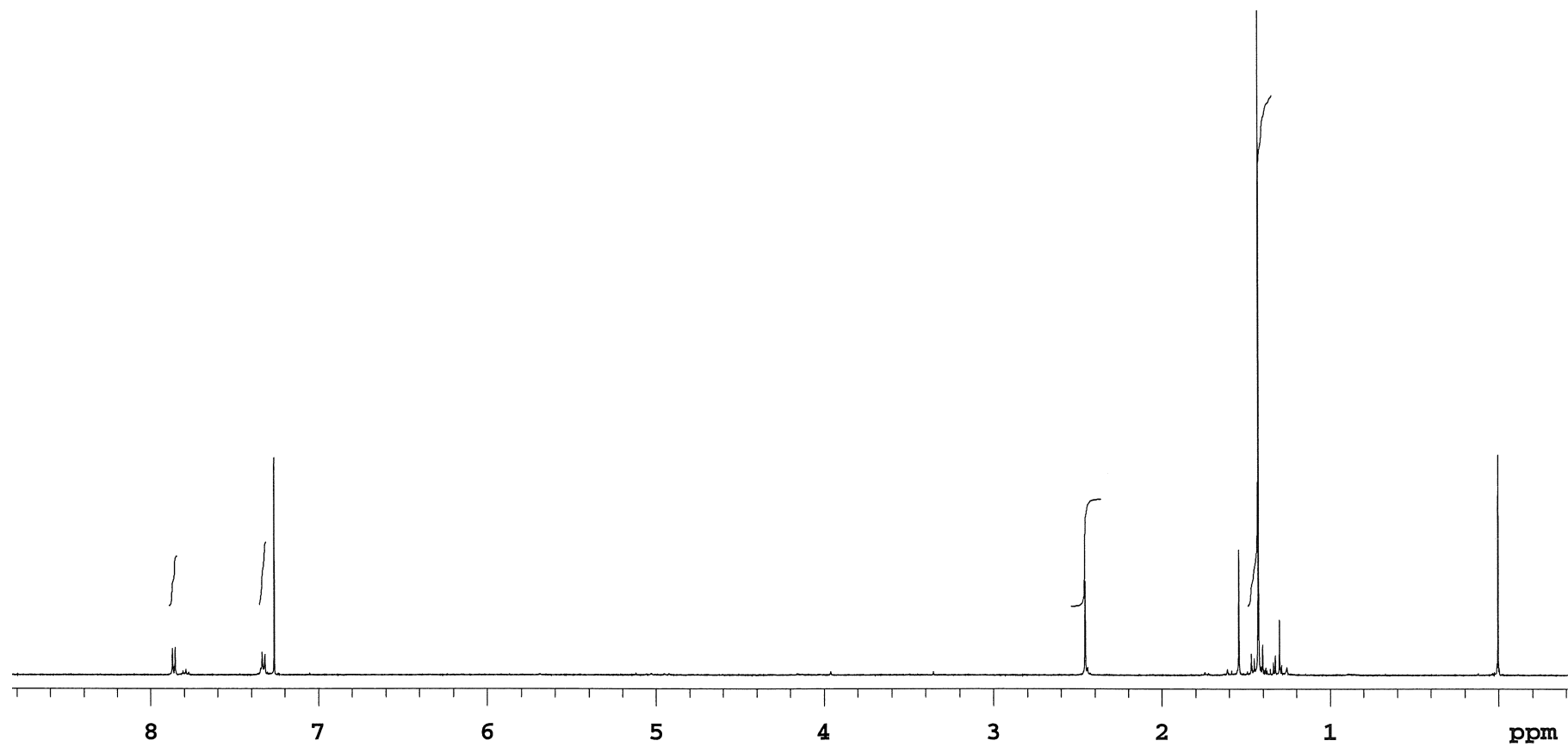
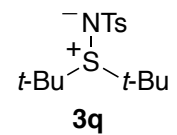
^1H NMR (300 MHz, CDCl_3)



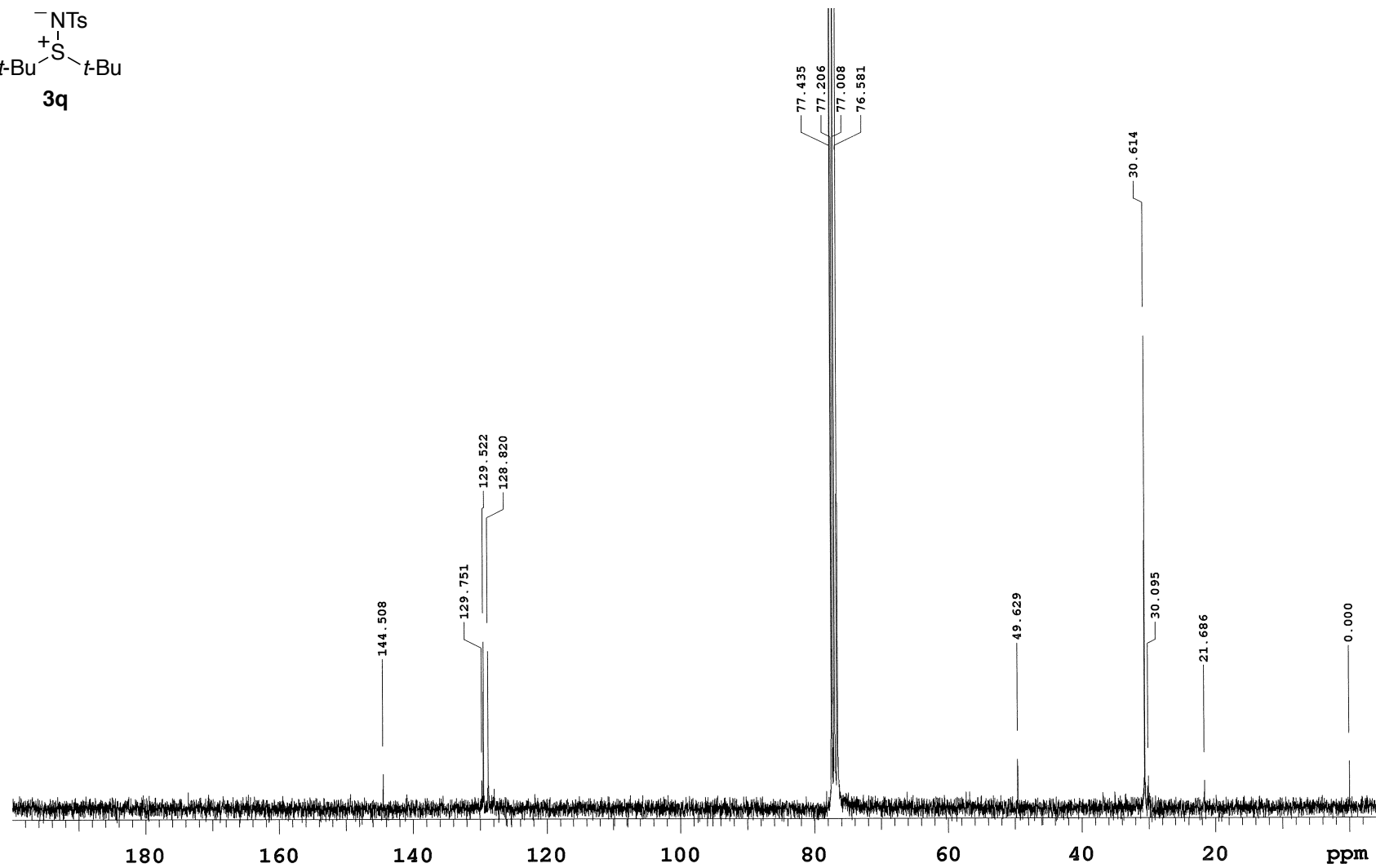
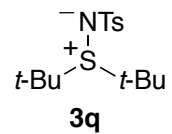
^{13}C NMR (75 MHz, CDCl_3)



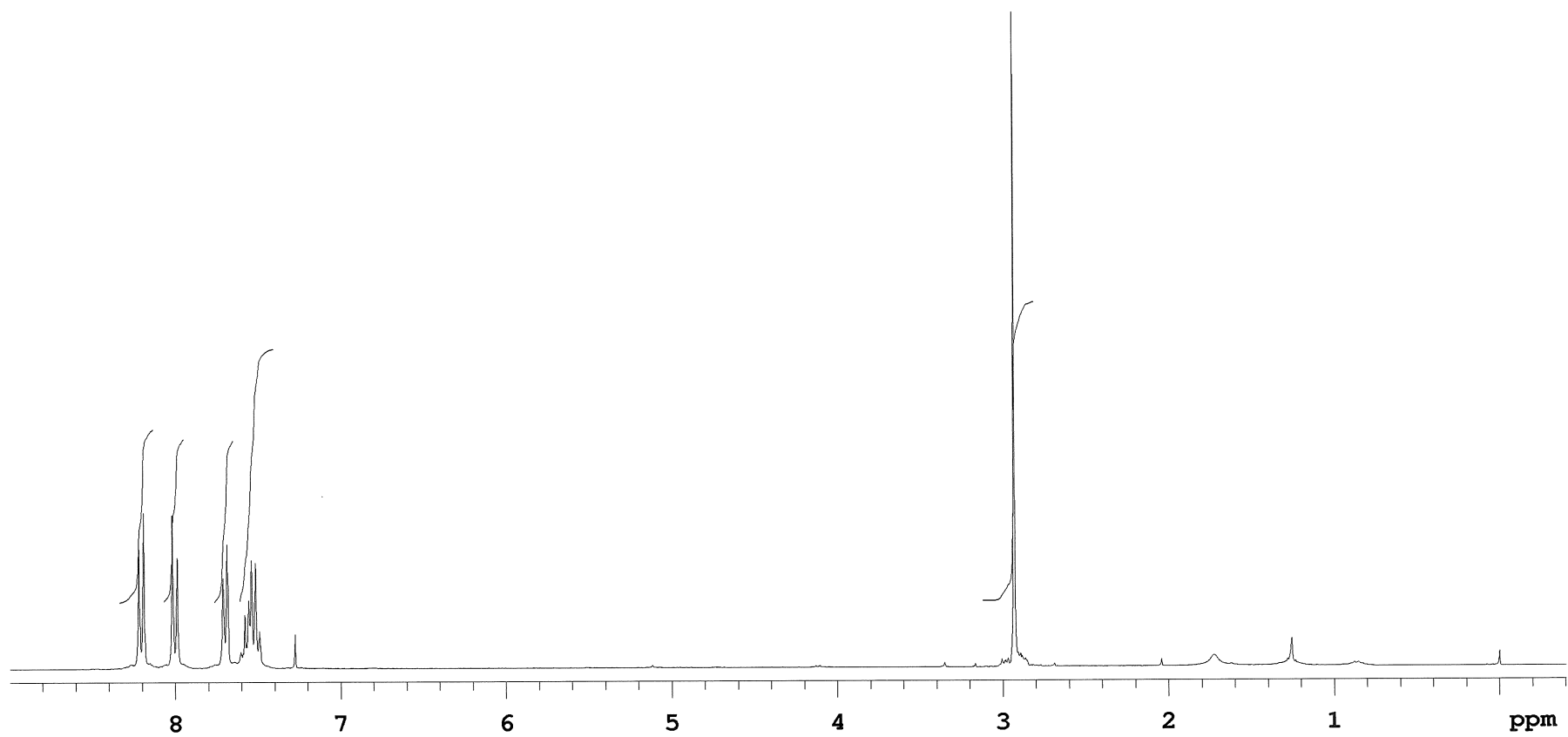
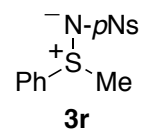
^1H NMR (500 MHz, CDCl_3)



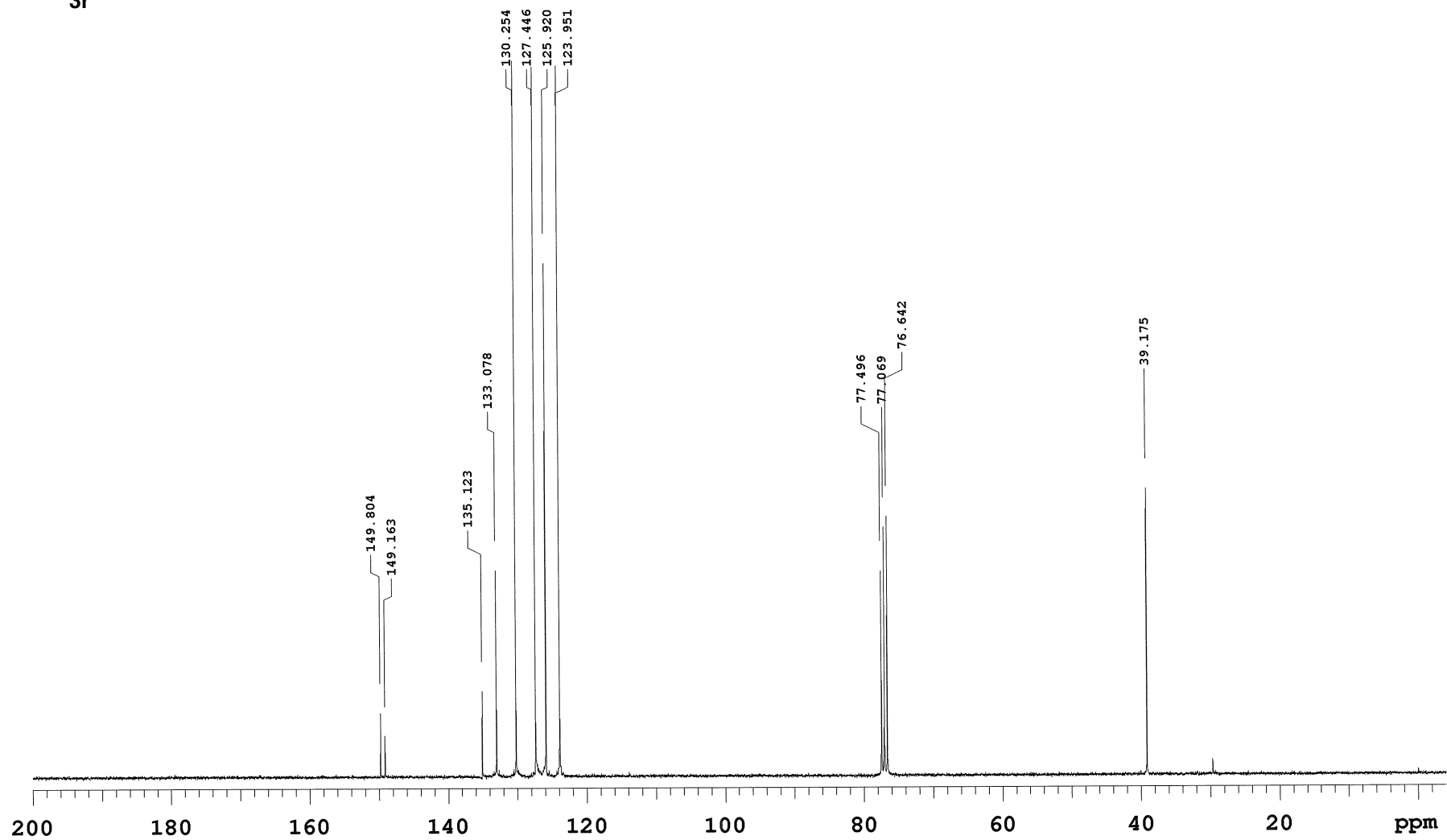
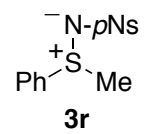
^{13}C NMR (75 MHz, CDCl_3)



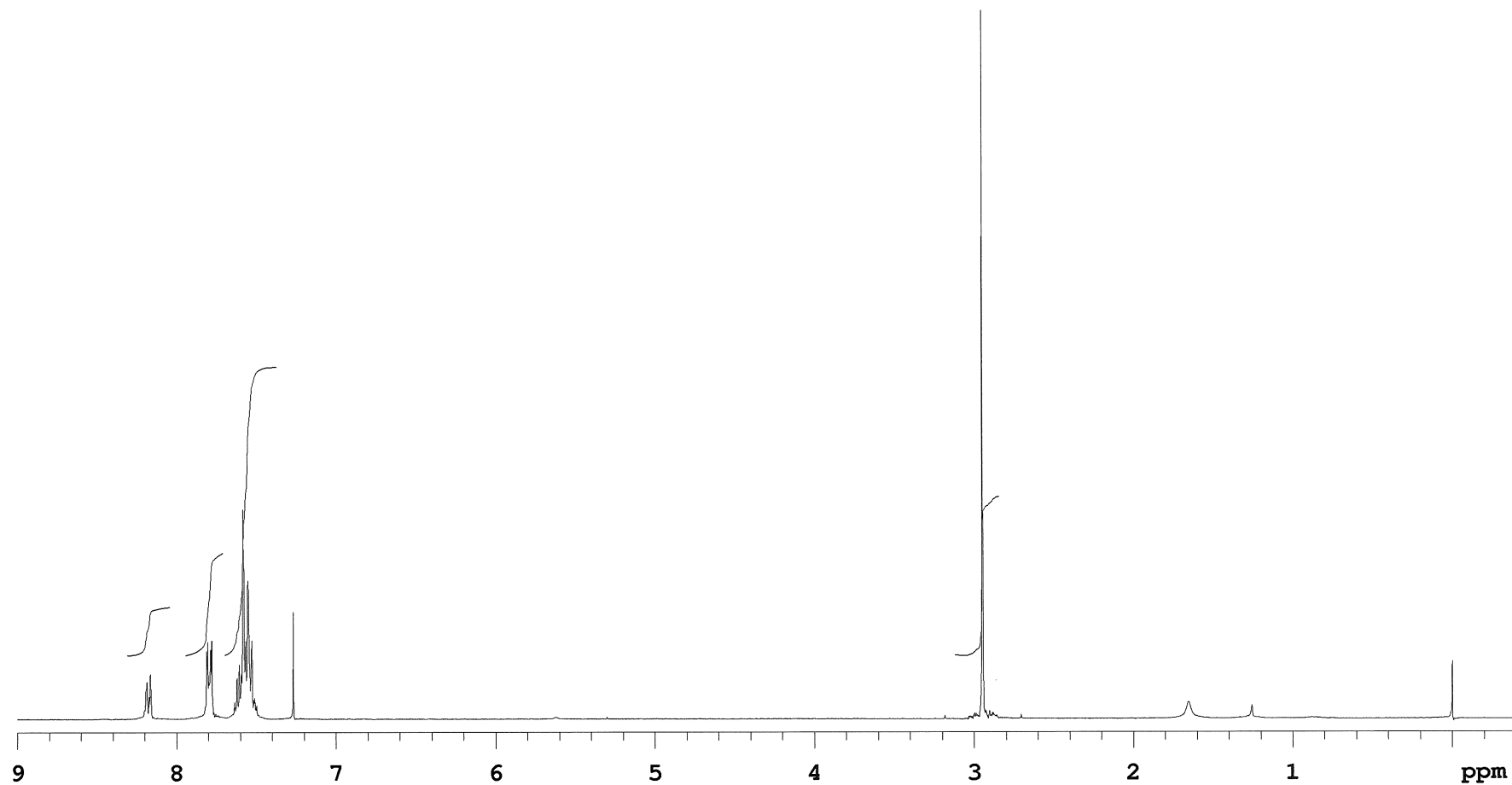
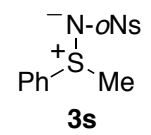
^1H NMR (300 MHz, CDCl_3)



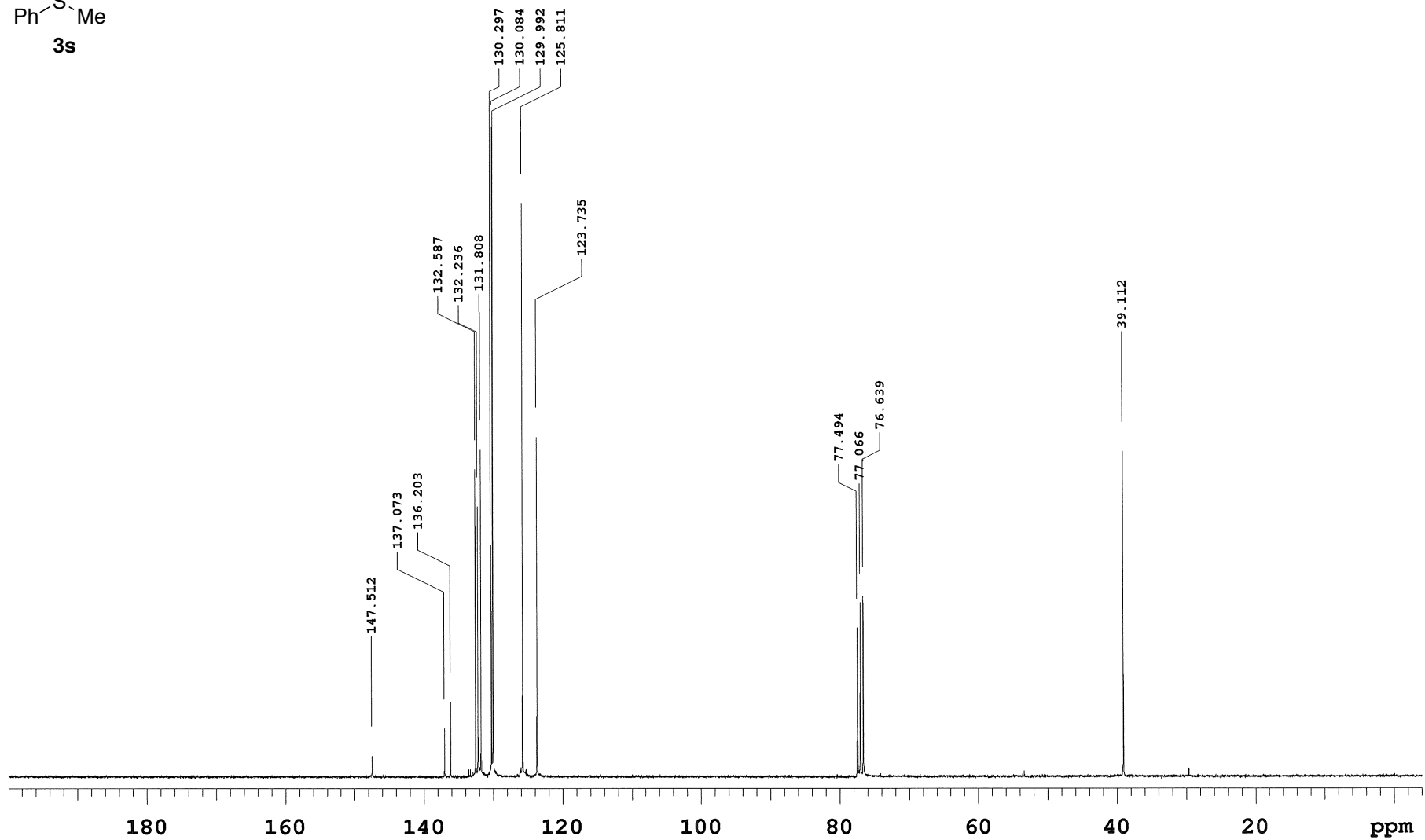
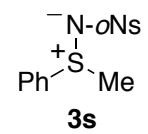
^{13}C NMR (75 MHz, CDCl_3)



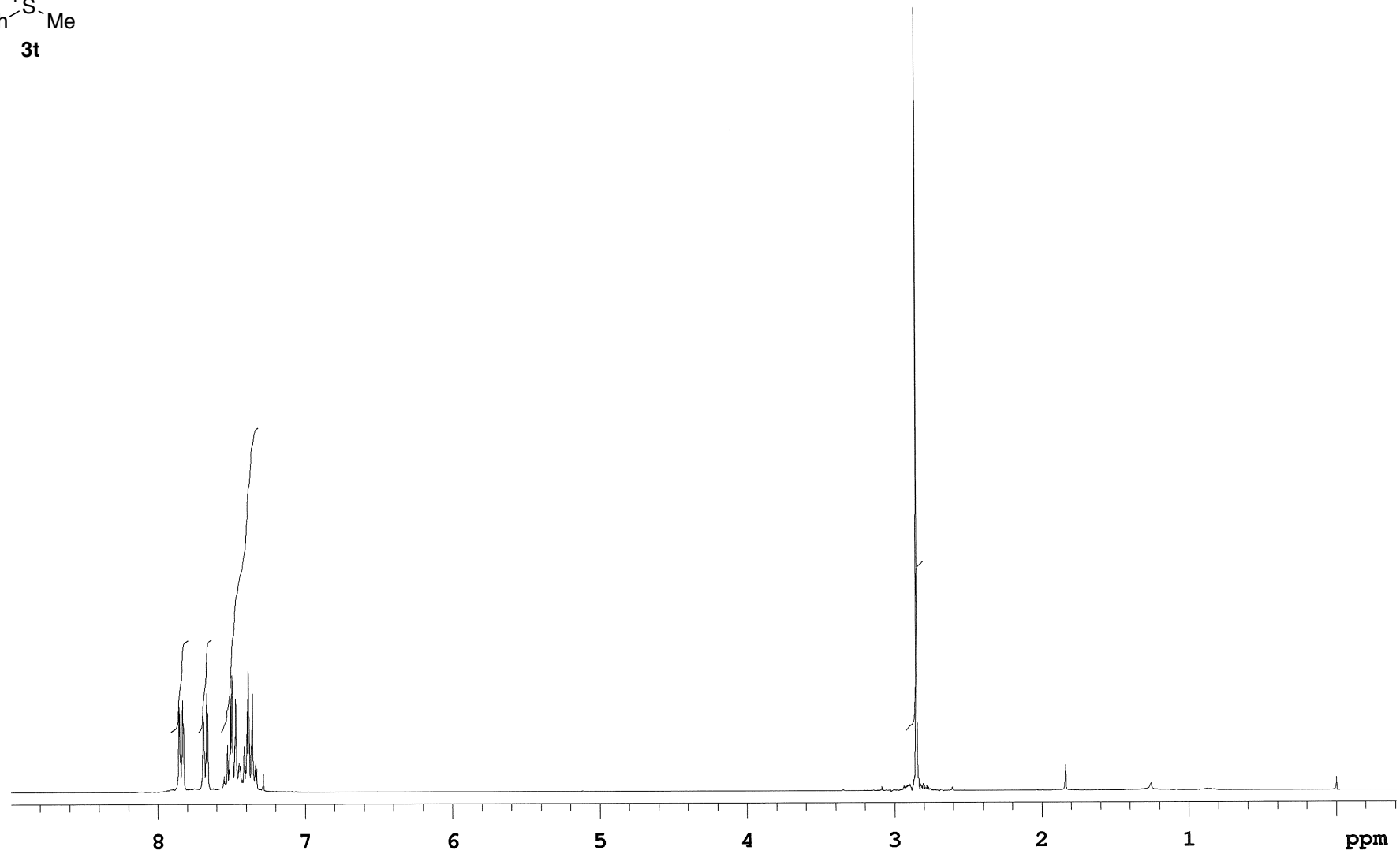
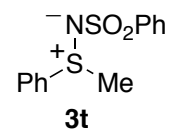
^1H NMR (300 MHz, CDCl_3)



^{13}C NMR (75 MHz, CDCl_3)



^1H NMR (300 MHz, CDCl_3)



^1H NMR (500 MHz, CDCl_3)

