

# Initial In Vitro and In Vivo Evaluation of a Novel CCK2R Targeting Peptide Analog Labeled with Lutetium-177

Anton Amadeus Hörmann <sup>1</sup>, Maximilian Klingler <sup>1</sup>, Maliheh Rezaeianpour <sup>1,3</sup>,  
Nikolas Hörmann <sup>2</sup>, Ronald Gust <sup>2</sup>, Soraya Shahhosseini <sup>3</sup> and Elisabeth von Guggenberg <sup>1,\*</sup>

<sup>1</sup> Department of Nuclear Medicine, Medical University of Innsbruck, 6020 Innsbruck, Austria; anton.hoermann@i-med.ac.at (A.A.H.); Maximilian.Klingler@i-med.ac.at (M.K.); m.rezaeianpour@yahoo.com (M.R.)

<sup>2</sup> Department of Pharmaceutical Chemistry, University of Innsbruck, 6020 Innsbruck, Austria; nikolas.hoermann@uibk.ac.at (N.H.); ronald.gust@uibk.ac.at (R.G.)

<sup>3</sup> Pharmaceutical Chemistry and Radiopharmacy Department, School of Pharmacy, Shahid Beheshti University of Medical Sciences, 1991953381 Tehran, Iran; soraya.shahhosseini@gmail.com

\* Correspondence: elisabeth.von-guggenberg@i-med.ac.at; Tel.: +43-512-504-80960

## Table of Contents

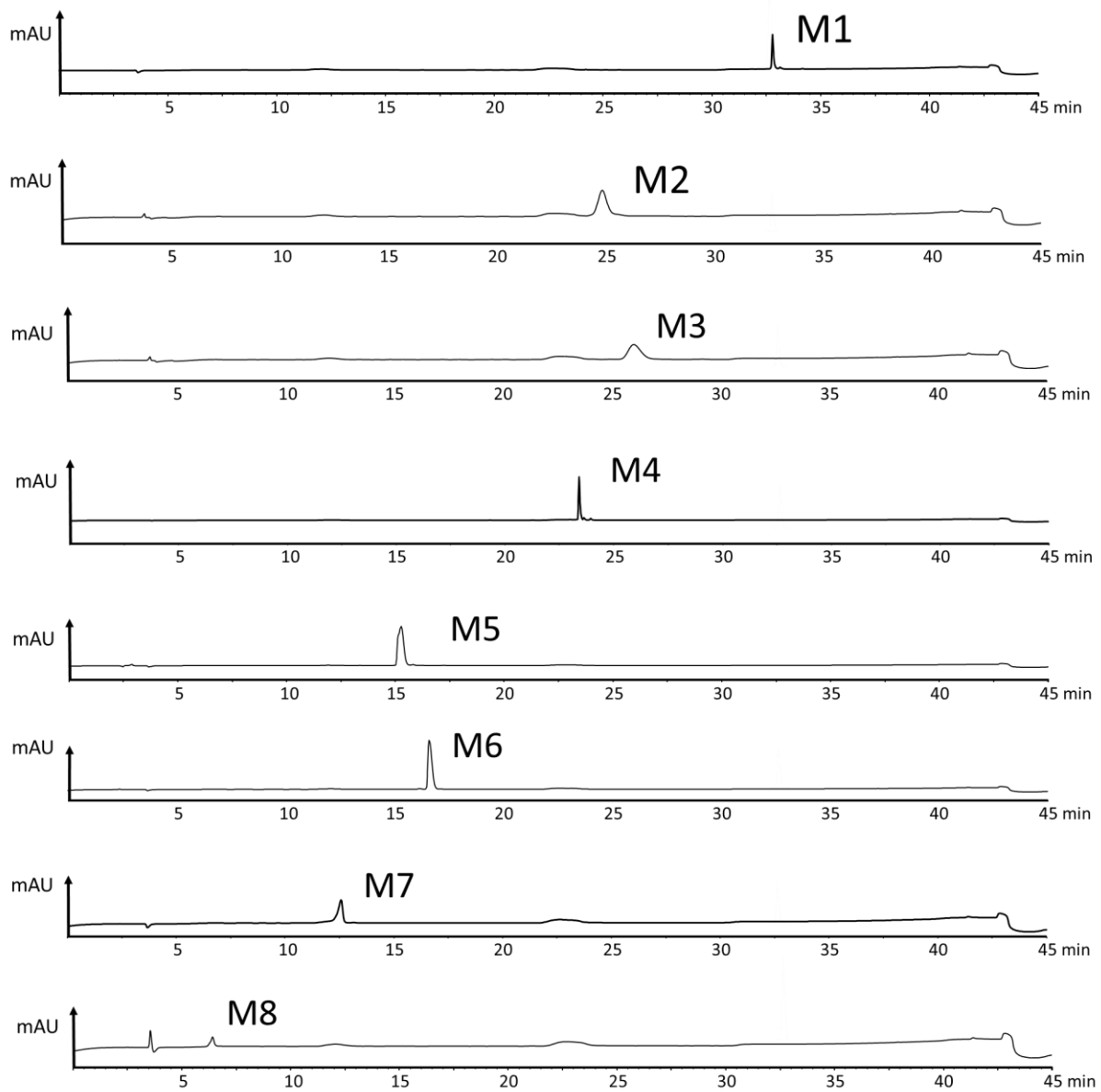
Figures S. 2

**Figure S1:** Representative UV-chromatogram of the metabolites **M1-M8**

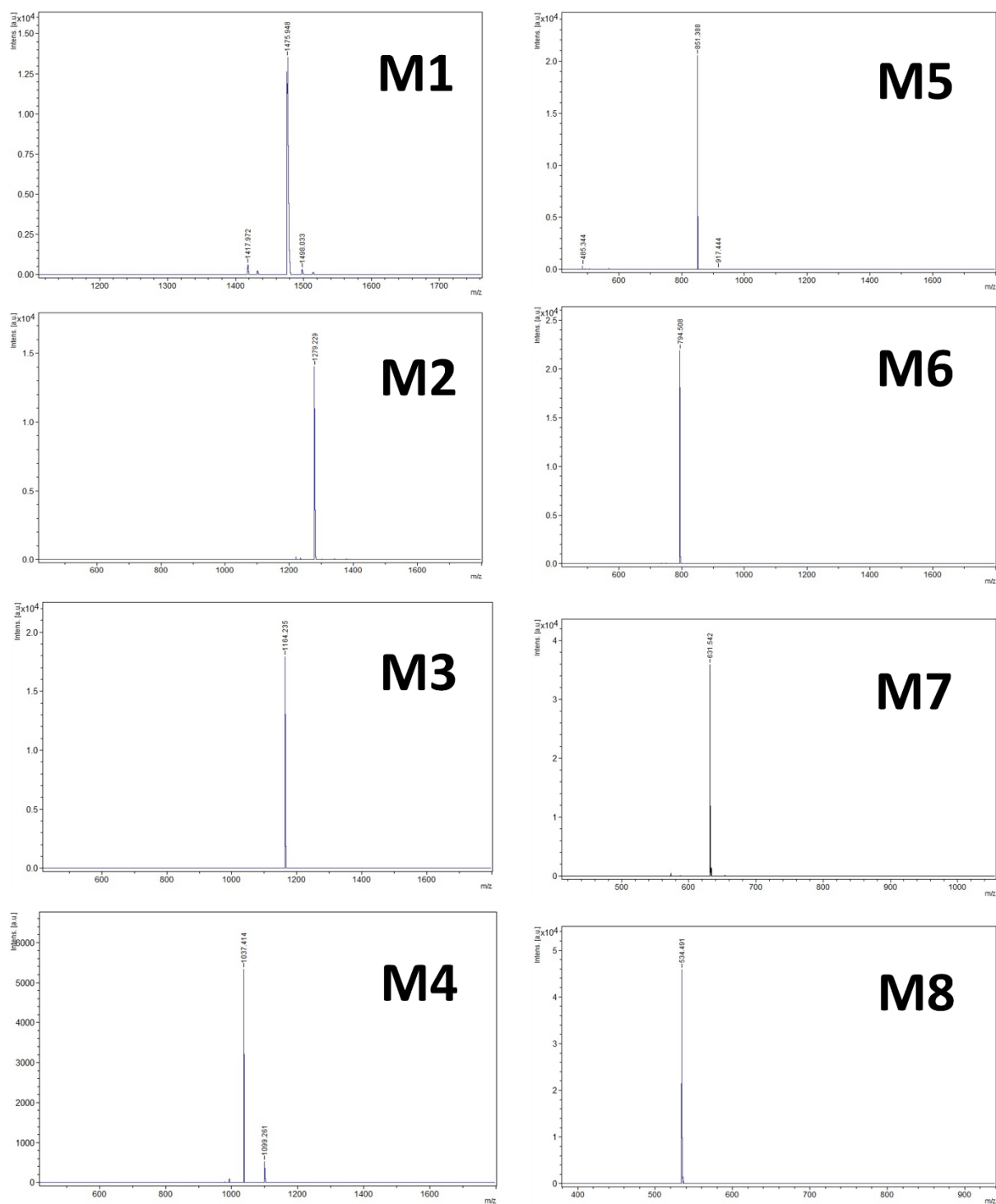
**Figure S2:** MALDI-TOF-MS of the different synthesized metabolites **M1-M8**

**Figure S3:** 400 MHz <sup>1</sup>H NMR of D-glutamic acid dimethyl ester

**Figure S4:** Representative radiochromatogram of [<sup>177</sup>Lu]Lu-**1** and [<sup>177</sup>Lu]Lu-**M1** co-analyzed in different ratios of approx. 1:1 (a) 2:1 (b) and 10:1 (c) using the radiodetector equipped with the high sensitivity loop (250 µL)



**Figure S1:** Representative UV-chromatogram of the metabolites **M1-M8**



**Figure S2:** MALDI-TOF MS spectra of the synthesized metabolites M1-M8

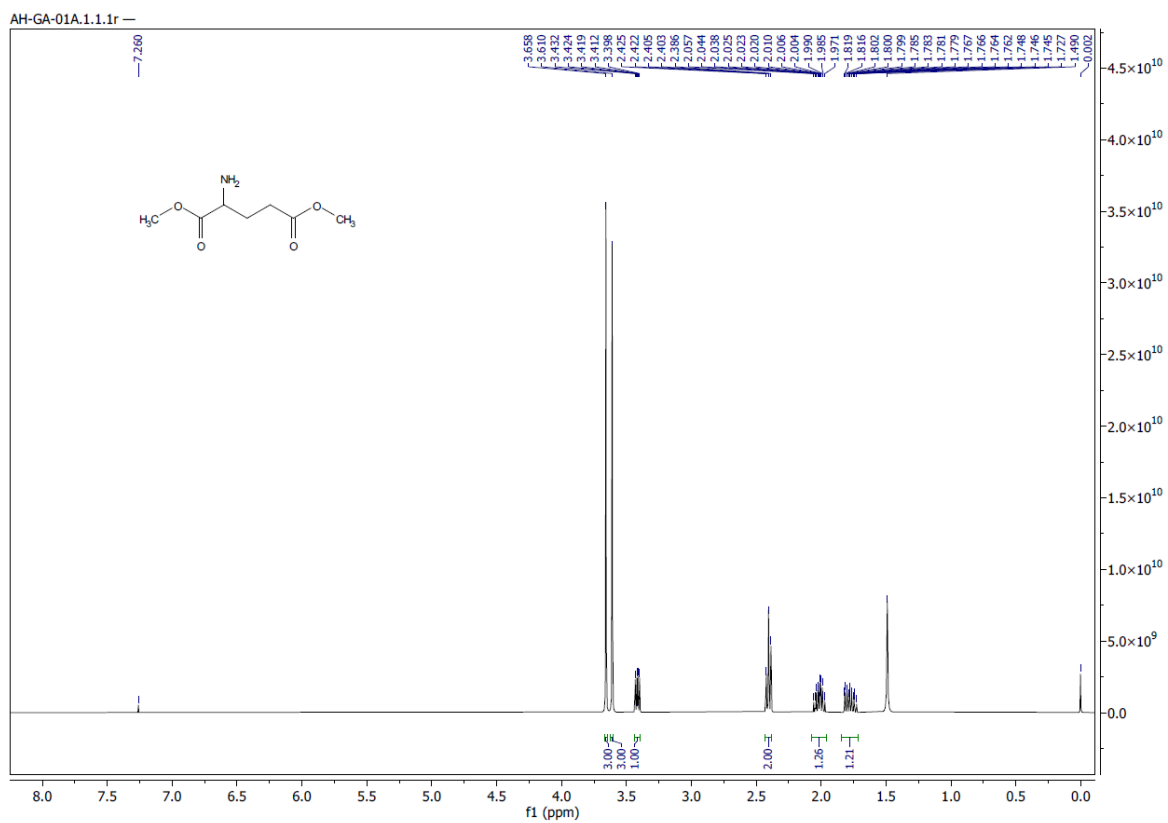
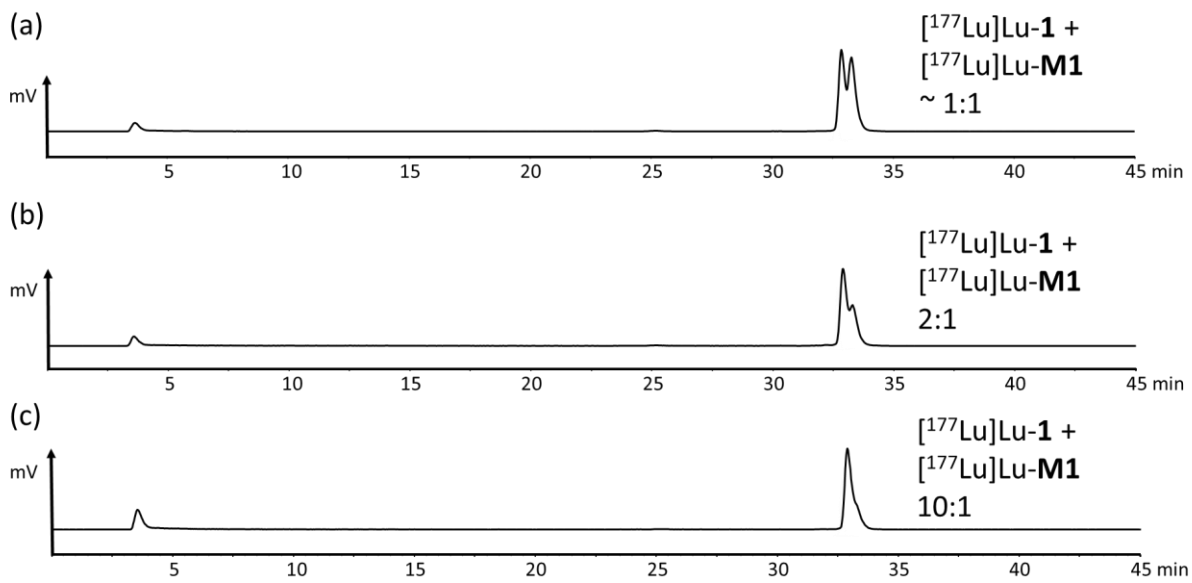


Figure S3: 400 MHz  $^1\text{H}$  NMR of D-glutamic acid dimethyl ester



**Figure S4:** Representative radiochromatogram of  $[^{177}\text{Lu}]\text{Lu-1}$  and  $[^{177}\text{Lu}]\text{Lu-M1}$  co-analyzed in different ratios of approx. 1:1 (a) 2:1 (b) and 10:1 (c) using the radiodetector equipped with the high sensitivity loop (250  $\mu\text{L}$ )