

Electrochemical Detection of Ultratrace Lead Ion through Attaching and Detaching DNA Aptamer from Electrochemically Reduced Graphene Oxide Electrode

Su Hwan Yu[†], Chang-Seuk Lee[†], and Tae Hyun Kim^{*}

Department of Chemistry, Soonchunhyang University, Asan 31538, Korea; shsh422@naver.com (S.H.Y.) ; eriklee0329@sch.ac.kr (C.-S.L.)

* Correspondence: thkim@sch.ac.kr; Tel.: +82-41-530-4722

† These authors contributed equally to this work.

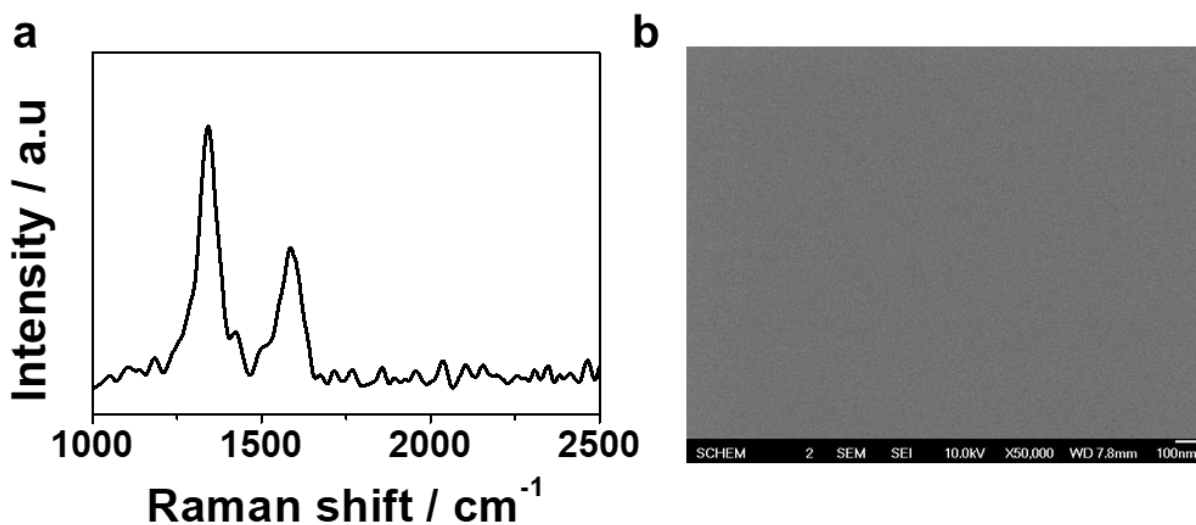


Figure S1. (a) Raman spectra of GCE; (c) SEM image of GCE.

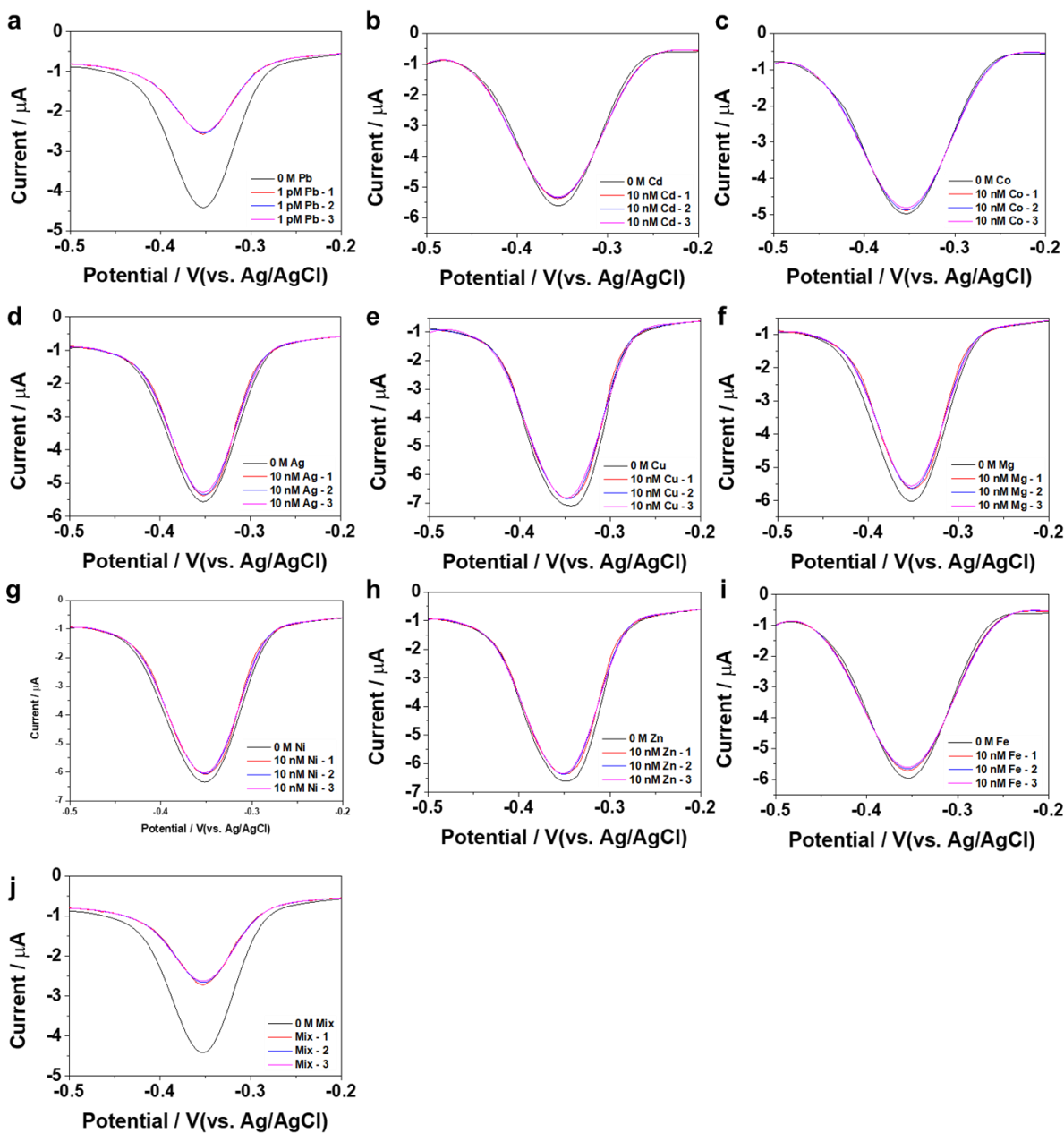


Figure S2. DPV curves of Apt/ERGO/GCE in the absence and presence of (a) 1 pM Pb^{2+} , (b) 10 nM Cd^{2+} , (c) 10 nM Co^{2+} , (d) 10 nM Ag^+ , (e) 10 nM Cu^{2+} , (f) 10 nM Mg^{2+} , (g) 10 nM Ni^{2+} , (h) 10 nM Zn^{2+} , (i) 10 nM Fe^{2+} , and (j) mixed solution in 10 mM Tris buffer at pH 7.4. Mixed solution (Mix) contained 1 pM Pb^{2+} and various metal ions (Cd^{2+} , Co^{2+} , Ag^+ , Cu^{2+} , Mg^{2+} , Ni^{2+} ,

Zn²⁺, Fe²⁺) of 10 nM. Each measurement was performed three times. The accumulation time for Apt (1 μM) coating was 20 min and the incubation time for Pb²⁺ detection was 20 min.

Table S1. Parameters values obtained from fittings of the impedance plots represented in Figure 2b.

EIS plot	R_{ct}(Ω)	C(μF)
Bare GCE	467.28	0.35
ERGO/GCE	336.68	0.24
Apt/ERGO/GCE	2077.49	1.74

Table S2. Parameters values obtained from fittings of the impedance plots represented in Figure 2c.

Concentration	R_{ct}(Ω)	C(μF)
0 M	2077.49	1.74
1 fM	1737.12	1.63
1 pM	1530.82	1.19
1 nM	1392.62	0.77