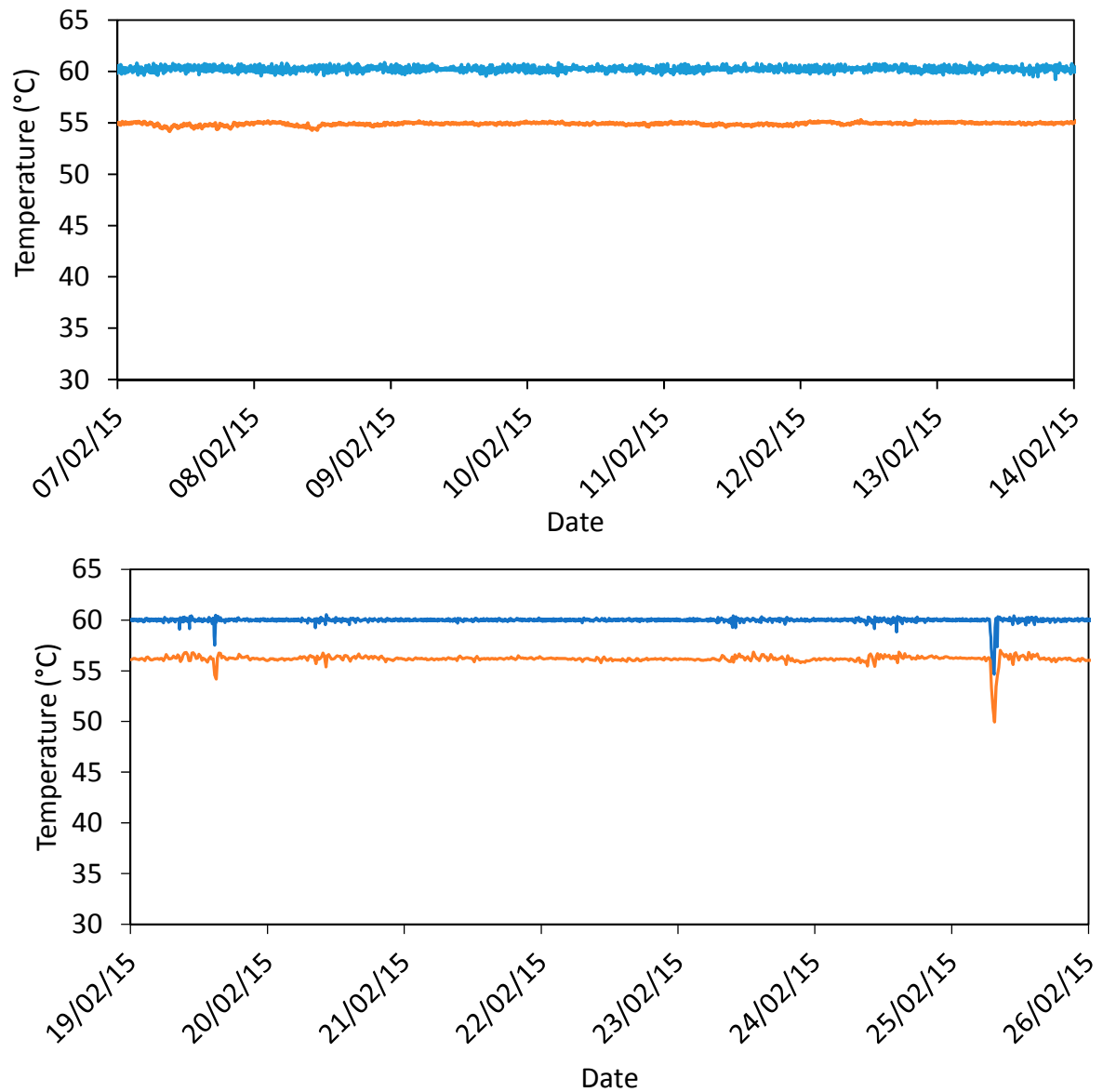


# Supplementary Materials: Combination of Heat Shock and Enhanced Thermal Regime to Control the Growth of a Persistent *Legionella pneumophila* Strain

Emilie Bédard, Inès Boppe, Serge Kouamé, Philippe Martin, Linda Pinsonneault, Louis Valiquette, Jules Racine and Michèle Prévost



**Figure S1.** Temperature measured at the water heater outlet (blue) and on the return loop prior to the water heater (orange) for systems A and B.

**Table S1.** Mean temperature measured on horizontal and vertical pipes monitored for hot water and recirculation.

System	Riser	Floor	Duration (d)	Hot Water Temp. (°C) Mean ± SD		Mean Recirc. Temp. (°C) Mean ± SD		Temp. Loss (°C) Horizontal Loop
				Vertical	Horizontal	Vertical	Horizontal	
A	na	2	17	58.7 ± 0.09	55.8 ± 0.21	53 ± 0.50	55.9 ± 0.36	0
		3	30	57.1 ± 0.28	57.4 ± 0.12	48.8 ± 0.55	54.8 ± 0.14	2.6
		4	17	58.4 ± 0.08	58.7 ± 0.09	50.7 ± 0.78	52.4 ± 1.06	6.3
		5	17	58.5 ± 0.09	58.6 ± 0.09	48.6 ± 0.91	52.5 ± 1.81	6.1
		6	17	58.8 ± 0.08	56.3 ± 0.08	47.7 ± 0.99	50.9 ± 0.79	5.4
		7	17	58.3 ± 0.09	58.2 ± 0.26	48.2 ± 1.34	39.8 ± 4.12	18.4
		8	17	58.9 ± 0.09	58.9 ± 0.10	52.0 ± 0.97	44.9 ± 1.02	14.0
		9	17	59.0 ± 0.11	58.4 ± 0.15	53.0 ± 0.55	53.1 ± 0.54	5.3
		10	17	59.2 ± 0.18	58.5 ± 0.57	58.3 ± 0.16	50.1 ± 0.57	8.4
		B	12N	2	24	54.8 ± 2.56	57.4 ± 2.71	54.2 ± 2.46
3	24			55.1 ± 2.58	58.5 ± 2.87	54.7 ± 2.58	55.5 ± 2.60	3
11R	2		24	58.3 ± 2.76	57.6 ± 2.72	49.5 ± 2.05	53.4 ± 2.42	4.2
	3		24	-	56.2 ± 2.65	-	53.5 ± 2.47	2.7
11J	3		24	57.5 ± 2.77	57.3 ± 2.75	53.6 ± 2.45	55.8 ± 2.60	1.5
	4		24	57.9 ± 2.78	58.0 ± 2.79	50.3 ± 2.51	55.5 ± 2.56	2.5
	5		24	-	58.1 ± 2.80	-	55.3 ± 2.56	2.8
	6		24	-	57.9 ± 2.72	-	54.4 ± 2.64	3.5
4P	2		24	-	56.5 ± 2.70	-	53.2 ± 2.41	3.3
	5		24	55.5 ± 2.58	57.2 ± 2.67	51.4 ± 2.27	51.1 ± 2.69	6.1
	6		24	55.4 ± 2.60	56.8 ± 2.67	43.1 ± 1.59	52.5 ± 2.34	4.3
SS & 1	3		3	56.9 ± 0.96	56.5 ± 1.38	53.6 ± 1.53	44.1 ± 1.04	12.4

Table S2. Faucet characterization and sampling plan.

System	Riser	Floor	ID	Type of Faucet	Connection Material	Mitigated	Sampling			Lp
							T° Profiles	Cu-Cold Water	Cu-Hot Water	
A	n.a.	10	A	Manual	Flexible piping		x		x	x
		10	B	Manual	Flexible piping		x		x	x
		9	C	Foot-operated	Copper		x	x	x	x
		8	D	Manual	Flexible piping	x	x		x	x
		7	E	Manual	Copper		x	x	x	x
		7	F	Manual	Flexible piping		x	x	x	x
		7	G	Manual	Copper		x	x	x	
		6	H	Electronic	Flexible piping	x	x		x	x
		5	I	Electronic	Flexible piping	x	x		x	x
		5	J	Manual	Flexible piping		x	x	x	x
		4	K	Electronic	Flexible piping	x	x		x	
		3	L	Electronic	Flexible piping	x	x		x	x
		1	M	Manual	Flexible piping		x	x		
B		6	4P	N	Electronic	Flexible piping	x		x	x
		6	11J	O	Manual	Flexible piping			x	
		5	11J	P	Foot operated	Flexible piping		x		x
		4	11J	Q	Manual	Copper		x	x	x
		4	4P	R	Manual	Flexible piping		x	x	x
		4	4P	S	Manual	Flexible piping		x		x
		3	11R	T	Manual	-		x		x
		2	11R	U	Manual	Flexible piping		x	x	x
		2	12N	V	Manual	Flexible piping		x	x	x
		1	-	W	Manual	Copper		x	x	x
SS	-	X	Manual	Flexible piping		x		x	x	