

Supplementary Materials: Allogenic Fc - Domain Facilitated Uptake of IgG in Nasal Lamina Propria: Friend or Foe for Intranasal CNS Delivery?

Simone Ladel, Johannes Flamm, Arghavan Soleimani Zadeh, Dorothea Filzwieser, Julia-Christina Walter, Patrick Schlossbauer, Ralf Kinscherf, Katharina Lischka, Harald Luksch and Katharina Schindowski

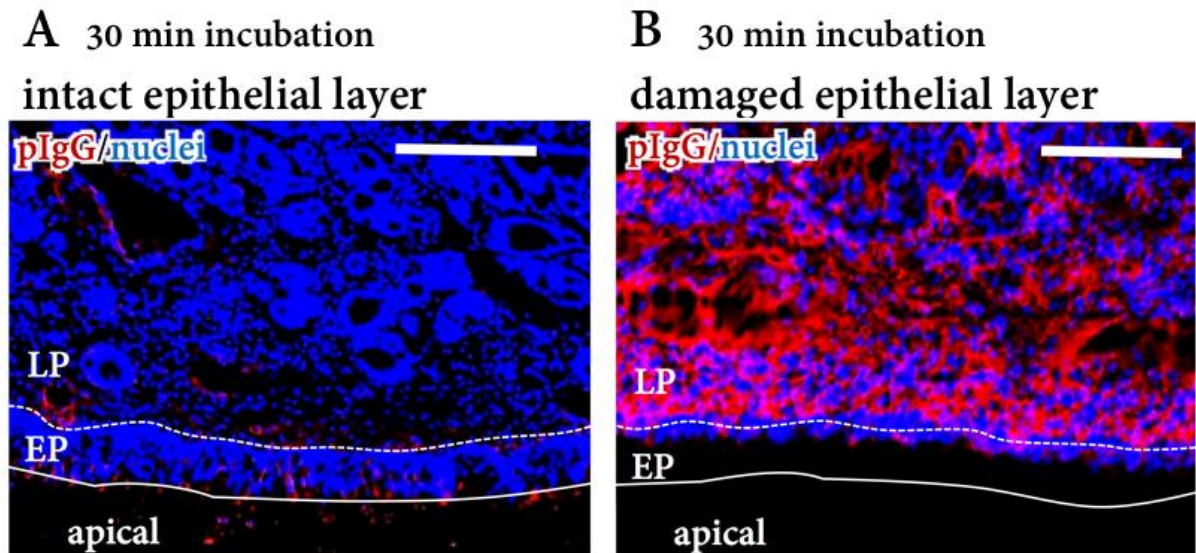


Figure S1. Influence of damaged epithelial layer on the experimental readout. (A) While only small amounts of exogenous IgG can cross the epithelial barrier within 30 min of incubation, (B) a loss of the epithelial layer that may occur during the specimen preparation or during the experimental procedure results in a massive penetration within the same incubation time.