

Figure S1. Comparisons among manually and weka-segmented Arabidopsis leaves. **(A)** Col-0, wild type Columbia-0 accession; **(B)** *cyp79 b2/b3*, the Botrytis-susceptible *cytochrome p450 79-b2* and *-b3* double mutant; **(C)** *lacs2-3*, the Botrytis-resistant *long-chain acyl-coa synthase2* mutant. Green, healthy pixels; yellow, chlorotic pixels; purple, necrotic pixels.

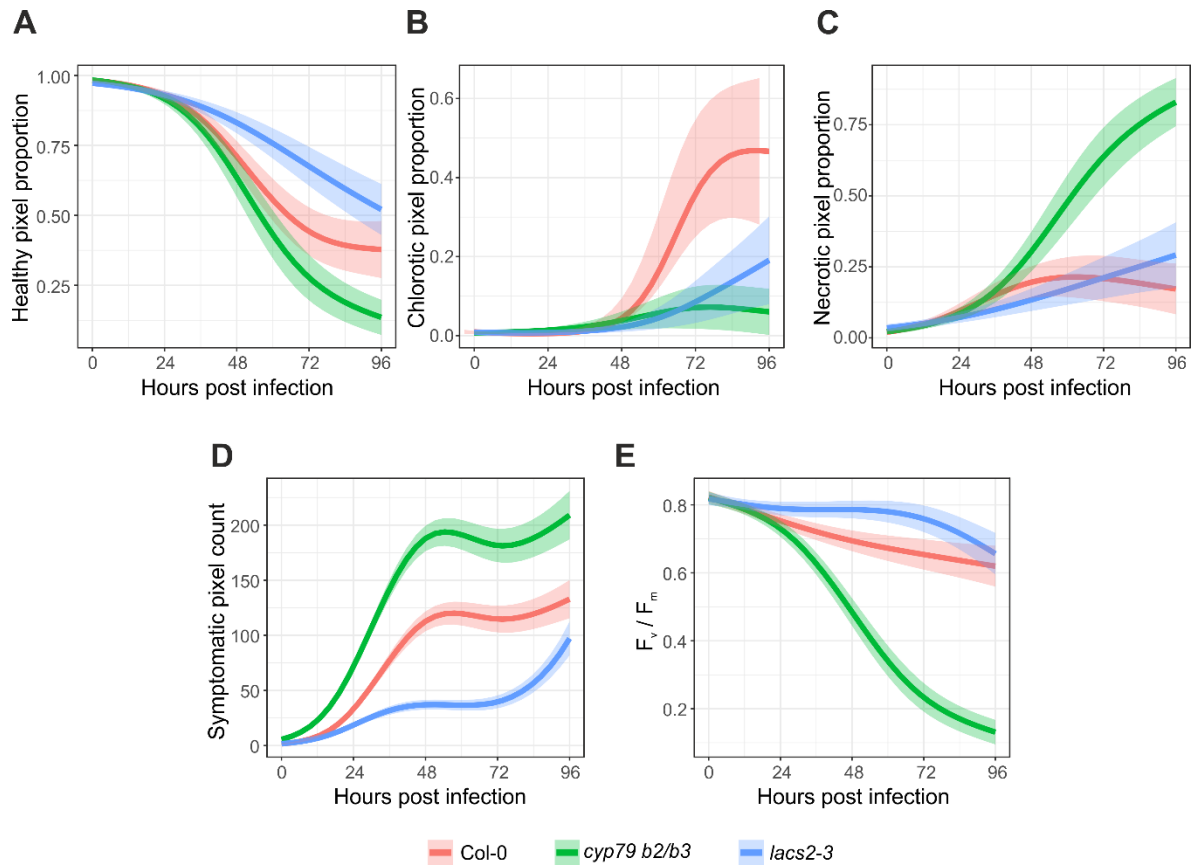


Figure S2. Model fit for all parameters used in this study. (A) Healthy pixel proportion; (B) Chlorotic pixel proportion; (C) Necrotic pixel proportion of the total pixels in the leaf; (D) Symptomatic area estimated by counting all pixels with F_v/F_m values below 0.75; (E) Maximum quantum yield of photosystem II was used as a severity measurement. (A–C) used red green blue (RGB) imaging and (D,E) used chlorophyll fluorescence imaging. Col-0, wild type Columbia-0 accession; *cyp79 b2/b3*, the Botrytis-susceptible *cytochrome p450 79-b2* and *-b3* double mutant; *lacs2-3*, the Botrytis-resistant *long-chain acyl-coa synthase2* mutant; F_v/F_m , maximum quantum yield of photosystem II or severity.