

Article

Landslide Activity Maps Generation by Means of Persistent Scatterer Interferometry

Silvia Bianchini ^{1,2,*}, Gerardo Herrera ², Rosa Maria Mateos ^{2,3}, Davide Notti ^{2,4},
Inmaculada Garcia ^{2,5}, Oscar Mora ⁶ and Sandro Moretti ¹

¹ Earth Sciences Department, University of Firenze, Via La Pira 4, I-50121 Firenze, Italy;
E-Mail: sandro.moretti@unifi.it

² Geohazards InSAR Laboratory and Modeling group (InSARlab), Geological Survey of Spain (IGME), C/. Alenza 1, E-28003 Madrid, Spain; E-Mails: g.herrera@igme.es (G.H.);
rm.mateos@igme.es (R.M.M.); inmaculada.garcia@igme.es (I.G.)

³ Geological and Mining Institute of Spain, Urbanización Alc ázar del Genil, 4. Edificio Zulema bajos, E-18006 Granada, Spain

⁴ Earth and Environmental Science Department, University of Pavia, Via Ferrata 1, I-27100 Pavia, Italy; E-Mail: davide.notti@unipv.it

⁵ Geological and Mining Institute of Spain, Avenida Ciudad Quer éaro s/n., E-07007 Palma de Majorca, Spain

⁶ Altamira Information, C/. C òrsega 381-387, E-08037 Barcelona, Spain;
E-Mail: oscar.mora@altamira-information.com

* Author to whom correspondence should be addressed; E-Mail: silvia.bianchini@unifi.it;
Tel.: +39-055-275-7777; Fax: +39-055-275-7788.

Received: 18 September 2013; in revised form: 11 November 2013 / Accepted: 13 November 2013 /
Published: 25 November 2013

Abstract: In this paper a methodology is proposed to elaborate landslide activity maps through the use of PS (Persistent Scatterer) data. This is illustrated through the case study of Tramuntana Range in the island of Majorca (Spain), where ALOS (Advanced Land Observing Satellite) images have been processed through a Persistent Scatterer Interferometry (PSI) technique during the period of 2007–2010. The landslide activity map provides, for every monitored landslide, an assessment of the PS visibility according to the relief, land use, and satellite acquisition parameters. Landslide displacement measurements are projected along the steepest slope, in order to compare landslide velocities with different slope orientations. Additionally, a ground motion activity map is also generated, based on active PS clusters not included within any known landslide phenomenon, but

even moving, potentially referred to unmapped landslides or triggered by other kinds of geomorphological processes. In the Tramuntana range, 42 landslides were identified as active, four as being potential to produce moderate damage, intersecting the road Ma-10, which represents the most important road of the island and, thus, the main element at risk. In order to attest the reliability of measured displacements to represent landslide dynamics, a confidence degree evaluation is proposed. In this test site, seven landslides exhibit a high confidence degree, medium for 93 of them, and low for 51. A low confidence degree was also attributed to 615 detected active clusters with a potential to cause moderate damage, as their mechanism of the triggering cause is unknown. From this total amount, 18 of them intersect the Ma-10, representing further potentially hazardous areas. The outcomes of this work reveal the usefulness of landslide activity maps for environmental planning activities, being exportable to other radar data and different geomorphological settings.

Keywords: SAR (Synthetic Aperture Radar); Persistent Scatterer Interferometry; landslides

1. Introduction

Differential SAR (Synthetic Aperture Radar) Interferometry techniques can offer great support to natural hazard detection and monitoring since they provide ground displacement data characterized by rapid and easily updatable measurements, millimetric and centimetric precision, high spatial resolution, good temporal sampling, and wide area coverage, consequently, reducing efforts and costs. In particular, multi-temporal interferometric techniques, *i.e.*, Persistent Scatterer Interferometry (PSI), have recently demonstrated to be a valuable and successful tool to detect slope instability and map geomorphological processes, such as slow-moving landslides [1–12].

At present, the availability of large stacks of SAR data from both historical and new-generation satellite sensors permits to spatially and temporally detect landslide displacements at regional and local scale with improved resolution and precision [13–20], especially on wide areas that are too large or inaccessible to be investigated through conventional monitoring techniques.

Nevertheless, PSI techniques hold some limitations, mainly due to the acquisition geometry of the satellite systems. PSI-based displacement data are mono-dimensional along the satellite LOS (Line Of Sight); consequently, they are dependent on the relationships between sensor acquisition geometry, the local topography, and the real direction of movement. This is critical when dealing with landslides, as only a fraction of slope movement component can be captured in the LOS. Additionally, the same ground movement can be estimated with opposite sign and different module from ascending and descending orbits, making the slope dynamics interpretation not immediately intelligible [6,8,21–23].

In this paper, a methodology to fully exploit PS data acquired in L-band by ALOS (Advanced Land Observing Satellite) satellite equipped with PALSAR (Phased Array type L-band Synthetic Aperture Radar) sensor is presented for detecting and representing landslide displacements in the Tramuntana range in the island of Majorca (Spain), taking into account both satellite parameters and geomorphological features. The main aim is assessing the ground velocity, the geometrical visibility,

and radar detection suitability of the phenomena, and generating landslide activity maps, which can represent alert maps of the study area.

The Tramuntana range is the main mountainous alignment of Majorca, where a wide range of slope movements occurs, among which the most frequent ones are rockfalls, rotational, and complex landslides [24]. The Tramuntana range is also characterized by a high exposure of elements at risk, due to the presence of several tourist resorts and apartments, and the Ma-10 road that represents the main road of the island and suffered several damages across time, due to both rockfalls and landslides.

After elaborating landslide and ground motion activity maps, an innovative confidence degree evaluation is finally carried out, in order to attest the reliability of these provided products, resting upon the availability of PS and further external data, *i.e.*, damages inventory.

2. Study Area: The Tramuntana Range, Majorca (Spain)

The study area is the Tramuntana Range in Majorca (Spain), the main mountainous alignment of the island, extended up 1,480 km² in the northwestern part of Majorca [25] (Figure 1a). This Alpine range spreads parallel to the north coast, being approximately 90 km maximum long and meanly 15 km wide. The mountain line exceeds 600 m a.s.l. (above sea level) everywhere, and the central sector (Lluc area) is the highest, with several peaks higher than 1,000 m, including Puig Major (1,445 m a.s.l.), which is the highest peak on Majorca island [26]. The north coastal side of Tramuntana mountain range is the most abrupt and rugged, with prevalent very high cliffs overlooking the sea and steep slopes with 30–40% gradient percentage, while the southern side is smoother, characterized by a gentler gradient (Figure 1c). Flat regions cover 4% of the total area. Slopes S-SE oriented are slightly frequent than the other orientations, due to the structural outline of the range (Figure 1d).

The present geomorphologic setting is determined by the geological structure of the chain and was formed during the Miocenic structuring linked to the Alpine fold, characterized by a series of NW overlapping thrusts [27]. From the geological point of view, the main framework of the Tramuntana range is constituted by Mesozoic carbonate rocks (limestones and dolostones) (Figure 1b). The lowest units of the stratigraphic sequence of the Tramuntana range are composed of Triassic siliceous sandstone (Buntsandstein, Lower Triassic), dolostones and marls (Rhaetian, Upper Triassic), and in some places clay and gypsum (Keuper, Upper Triassic). Jurassic limestones and Lias dolostones overlap the Triassic series. The upper units are conglomerate and marls (Paleogene-Miocene) and recent colluvial sediments composed of Quaternary coarse debris, which cover most of the slopes with several meters of thickness (Figure 1b).

From a structural point of view, the Tramuntana range is an NE-SW directed imbricated system of overlapping thrusts [28]. The regional detachment level of the nappe thrusts is located in the Keuper sediments (clays with gypsum and altered volcanic rocks) [27,29].

2.1. Landslide Movements on Tramuntana Range

The landslides of the Tramuntana range have been studied and described by Mateos [30] and Mateos *et al.* [25,28]. The variety of lithologies cropping out in this mountain chain determines a wide range of slope movements [24]. Therefore, the geological structure of the Tramuntana range conditions the typology and the spatial distribution of the recent mass movements, as well as the presence of

faults and discontinuities that often control the planes and the local failure surfaces of ground motions. Shallow landslides are frequent phenomena: most of the movements are translational slides and earth flows or complex movements, mostly involving the soft sediments from the Upper Triassic (clays with gypsum), and the Paleogene-Neogene loam deposits that occasionally outcrop along the mountain range. Movements, such as debris slides and debris flows, are also widespread as most of the slopes in the Tramuntana range are covered with these coarse colluviums. Nevertheless, the most frequent slope movements in the Tramuntana range are rockfalls due to the predominance of Jurassic rocky massifs made of limestone and dolostones [30].

The steep topography of the chain, related to its geological and structural complexity, determines an intense slope dynamics [25], quickened by the Mediterranean climate. The island of Majorca has a typically Mediterranean climate, with mild winters and warm-dry summers. The maximum precipitation takes place during the autumn months due to the arrival of the first cold air masses, which contrast with the high temperature retained by the sea. This phenomenon is known as “gota fría” (cold rain), in which heavy storms are accompanied by intense rainfall with episodes of up to 250 mm in 24 h [25]. The orography of the island clearly controls the distribution of precipitation. The central sector of the Tramuntana range registers an average annual precipitation of 1,200 mm, which gradually drops towards the extreme SW of the range, where average annual precipitation is no more than 300 mm. Mateos *et al.* [25] reveals that recent rockfalls have also occurred after several freeze-thaw cycles, being a determining and unusual factor in this warm region.

The economy of the Tramuntana range is based exclusively around tourism, which accounts for 95% of its income. In particular, the dwellings and the road network are of great importance in this area as it welcomes 8.5 million visitors every year [25].

The occurrence of many shallow landslides cause huge damages on the island, e.g., the Estellencs landslide (1971, 1979, 2010), the Fornalutx landslide (1924, 1974, 2002), and the Biniarroi landslide (1721, 1813, 1943) that are the most important mass movements that occurred in the Balearic islands, due to both their dimensions and caused damages [26].

A total of 918 events have been recorded in the Tramuntana range, being 65% rockfalls and 35% landslides. From this amount, 19% of the events have produced damage to buildings, structures and infrastructure. Recently, during the years 2008 to 2010, Majorca experienced one of the coldest and wettest winters in living memory, leading to the occurrence of 34 mass movements that produced damages to dwellings and road networks. Extensive damages occurred, especially on the Ma-10 Road, which is the main road of the northern part of Tramuntana range with an intense vehicular traffic, causing, therefore, significant economic losses, estimated at about 11M Euro [25].

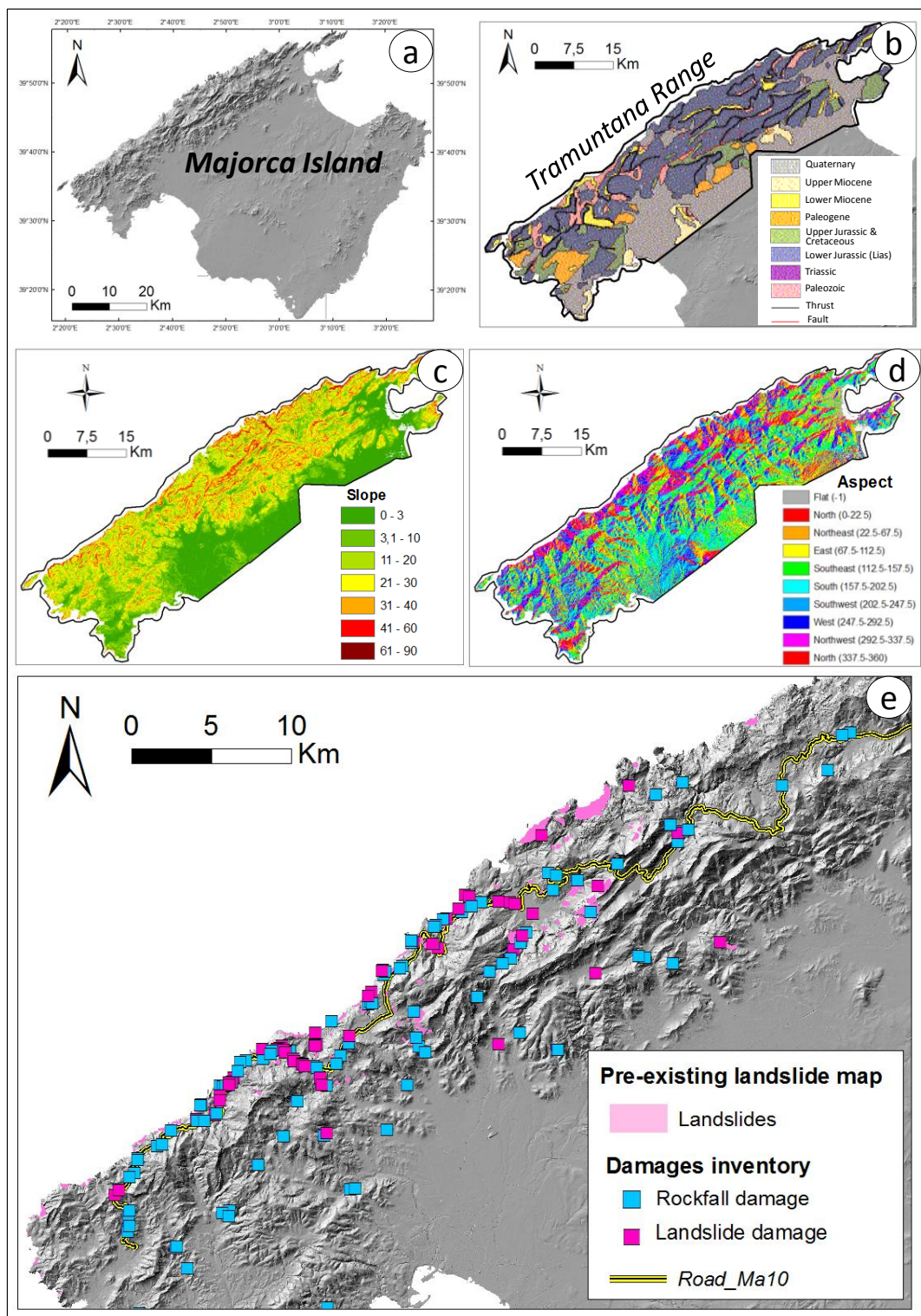
The rockfall and landslide damage inventory dated up to 2011 is pointed out in Figure 1e: it was elaborated at a 1:1,000 scale from different sources, and accounts 172 records (56 of them corresponding to landslide occurrences and 116 to rockfalls).

The available pre-existing inventory of ground movements in Tramuntana range includes rockfalls and landslides, covering the period 2008–2010 (Figure 1e). It was produced at a 1:5,000 scale by means of orthophoto and field-work [25,30].

The PSI technique for mapping and monitoring mass movements can only be applied to slow-moving landslide phenomena that are classified, according to Cruden and Varnes [31], as extremely slow (velocity < 16 mm/yr) and very slow landslides (16 mm/yr < velocity < 1.6 m/yr), due

to the acquisition parameters (*i.e.*, signal wavelength, revisit cycle) of the satellite systems. Thus, the comparison of the PS spatial distribution with the mass movement inventory was primarily focused on the inventoried slow-moving phenomena, *i.e.*, landslides, and on the related damage inventory due to landslides. The pre-existing landslide inventory contains 206 landslides covering an area of 11 km².

Figure 1. Background and pre-existing information of the study area: (a) Geographical location; (b) Geological setting of Tramuntana Range study area; (c) Slope map; (d) Aspect map; (e) Pre-existing landslides and damages inventory of Tramuntana Range.



3. PSI Processing and Radar Data

Available radar data consist of 14 SAR images acquired by ALOS-PALSAR satellite in L-band (24 cm wavelength), in the period of 2007–2010, in ascending orbit on the Tramuntana range and processed using the Stable Point Network (SPN) technique [29,30]. The SPN is an advanced differential interferometric processing technique that includes both the SB (Small Baseline) and the PS (Persistent Scatterers) approaches [2]. In Table 1, the main acquisition characteristics of the SAR dataset used in this work are shown.

Table 1. Main acquisition parameters of the Synthetic Aperture Radar (SAR) satellite ALOS dataset in the Tramuntana range.

Sensor	ALOS
Band	L
Acquisition orbit	Ascending
Temporal interval	01/01/2007–28/06/2010
Incidence angle (°)	39
Tracking angle (°)	346
Repeat cycle (days)	46
Number of images	14
Pixel resolution (m)	37×37

SPN technique allows detecting millimetric and centimetric displacements with high accuracy. This advanced interferometric technique uses a stack of SAR images (typically 20–30) to measure ground deformations with millimetric precision [32]. During the processing, the ground scatterers not affected by temporal decorrelation are identified; these are called persistent scatterers or stable points. They are natural objects over the ground surface, which give a very good reflection to the satellite throughout the entire stack of images. These points present a reduced level of noise, which allows for very reliable measurements. Furthermore, the atmospheric effects are estimated and compensated during the processing to derive highly accurate elevation and displacement values for each stable point. The highly precise error compensation allows for the generation of time series charts that provide a visualization of the evolution of the displacement of each stable PS point. Urban, semi-urban or rural areas can be studied in great detail, both in terms of high spatial resolution and the historical variation of the displacement over long time periods.

In the study area, ALOS PS data show a high coherence, being 0.90 up to 1 for the 51% of the total PS amount. Regarding the recorded motion rates, the velocity values measured along the LOS (V_{LOS}) range between about -30 mm/yr (away from the satellite direction) and $+30$ mm/yr (Table 2). Given the widespread presence of rocks with sparse vegetation in the study area, ALOS-PALSAR is an appropriate sensor as it is capable of measuring ground rates also in rural and natural zones, due to its high penetration coefficient to the soil.

Table 2. Amounts and velocity rates of Persistent Scatterer (PS) ALOS populations.

V_{LOS}	
PS number	722,331
PS density (PS/km²)	488
Velocity range(mm/yr) [min, max]	[-28.1, +24.50]
Average Velocity (mm/yr)	-0.2
IQR (0 ± σ)	0.0 ± 2.3
V_{SLOPE}	
PS number	326,604
PS density(PS/km²)	197
Velocity range(mm/yr) [min, max]	[-64.7, 0.00]
Average Velocity(mm/yr)	-3.9
Range within 68% PS from 0	0.0--4.5

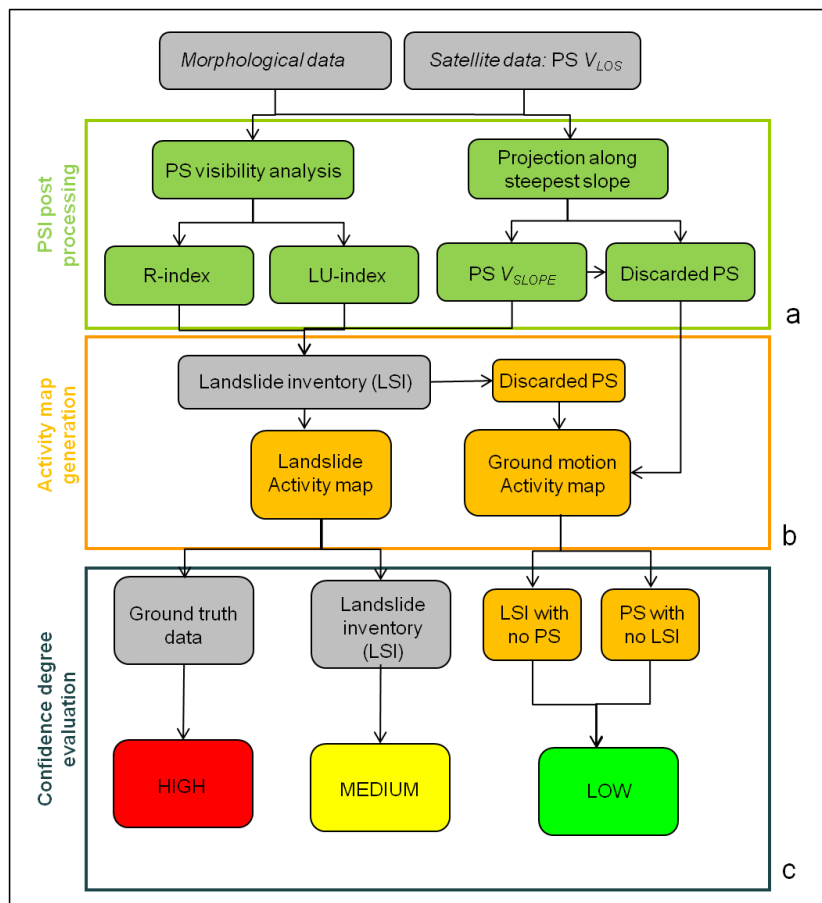
4. Methodology

The landslide activity map integrates the PSI data, the post-processing derived products and the improved landslide inventory.

Input data (grey panels in Figure 2) include morphological and satellite PS data, the pre-existing landslide inventory (LSI), as well as ground truth data, *i.e.*, damage database and field survey of the study area. Within the PSI post processing stage (Figure 2a), the visibility of the targeted study area is assessed and the LOS PS displacements are projected downslope. The visibility assessment, calculated through the computation of two indexes (R- and LU-index), is useful to identify slopes, PS targets, or landslides with an adequate geometry for satellite measurements (*i.e.*, slope direction parallel to the satellite LOS direction), to be distinguished from those where geometrical distortions will be introduced in the measurement. These geometrical distortions, characteristic of mountainous environments, come out from the combination of the local topography with respect to the satellite acquisition parameters [8,34] and can be reduced through the projection of satellite Line Of Sight velocities (V_{LOS}) along the local steepest slope (V_{SLOPE}). In a second stage (Figure 2b), PSI data and post-processing derived products are integrated with the landslide inventory to generate a “landslide activity map”. Therefore, for every landslide phenomenon, both the landslide visibility assessments as well as the displacement measurements are provided.

Separately, we also analyze PS benchmarks that were discarded through the downslope projection and that are not referred to any landslide of LSI, but even moving, since they could deal with unmapped landslides or other kinds of terrain motion processes. These clusters of moving PS are considered for the generation of a “ground motion activity map”, being the target of further necessary field investigations that could explain the mechanisms generating measured displacements. In the last step (Figure 2c), the confidence degree of the activity maps is evaluated (high, medium, or low). This evaluation aims at assessing how reliable the PSI measured displacement is to represent a landslide movement. It is important to stress that the reliability on the PSI measurement itself is not evaluated, but whether this measurement is related to landslide dynamic or not.

Figure 2. Methodology flow chart: (a) PSI post-processing phase, (b) Activity map generation, (c) Confidence degree evaluation.



5. PSI Post-Processing Phase

5.1. PS Visibility Analysis

The geometrical visibility of the area of interest is evaluated with respect to the morphology and land-use, and to the acquisition geometry of the available satellite system [8,22,34,35]. The R- and LU-indexes [8] are calculated for the whole area and assigned to each PS. Then, these indexes are also assigned to every landslide by computing the average or the moda value of all the PS included within its boundary, in order to assess how good the ground surface covered by each phenomenon is to backscatter the satellite radar signal with respect to its relief and land use.

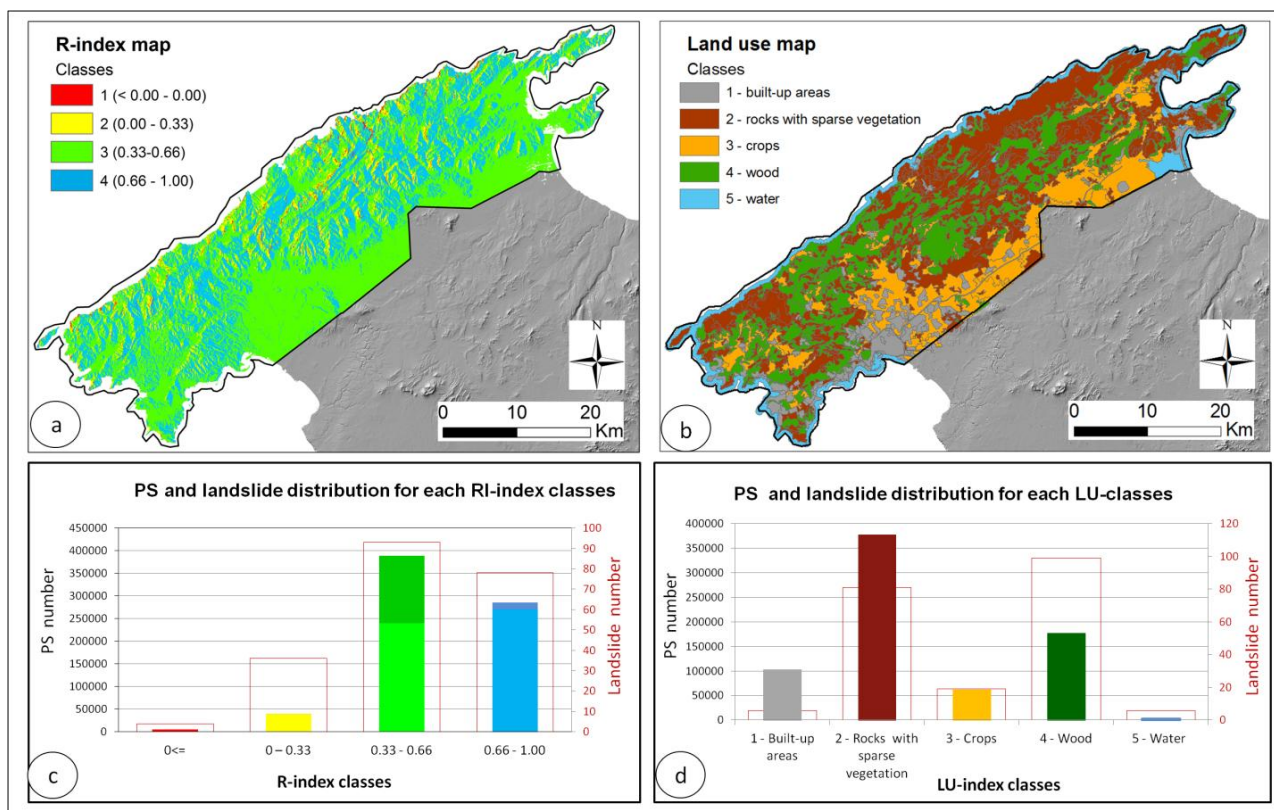
The R-Index (RI) is based on the approach proposed by Notti *et al.* [8] and it is calculated through Equation (1) that represents the ratio between the slant range and the ground range, taking into account the acquisition geometry of the radar (*i.e.*, incidence angle = θ ; angle from North of the satellite track = α) and the geometry of the ground surface (slope and aspect layers, S and A, respectively, derived from a Digital Elevation Model –DEM- with 20 m resolution):

$$RI = -\sin(S \cdot \sin(A - \alpha + 90) - \theta) \tag{1}$$

The RI ranges from the maximum value +1 to -1 and four classes are defined (Figure 3). In particular, it assumes negative or around 0 values (class 1) when no PS can be detected or when

geometrical distortions (*i.e.*, layover and shadow effects for negative values and foreshortening effect for $RI \approx 0$) strongly affect the area. Values from 0.66 to +1 are estimated when the suitability of the area to be investigated through the PS dataset is the best: this means that the slope direction of the area is approximately parallel to the satellite LOS direction (class 4). RI values from 0.33 to 0.66 include either PS located on slopes with an acceptable geometry with respect to the satellite LOS or PS located in flat areas (column portion with darker colors in Figure 3c). RI values between 0.00 and 0.33 indicate that the slope geometry is not favorable for the satellite acquisition geometry and a lower PS number is retrieved. As it expected, in the Tramuntana range, a greater number of PS is found for an increasing RI, as long as the PS located in flat areas (darker color columns in Figure 3c) are removed.

Figure 3. PS detection suitability based on Relief and Land use Visibility maps: (a) R-Index map of ALOS data (L-band); (b) Histogram of PS amount in each R-index classes. Red-contoured columns indicate the number of landslides with a certain average each R-class; (c) Land use map; (d) Histogram of PS amount and landslide number in each LU-index classes. Red-contoured columns indicate the number of landslides with a certain average each R-class.



In order to assess the suitability of every landslide to be monitored by ALOS PALSAR satellite, the average RI of all the PS included within the landslide geometry is calculated. From this analysis, 78 landslides exhibit the best geometry to be monitored (*i.e.*, slope direction approximately parallel to the satellite LOS direction). Assuming that the landslide propagation follows the steepest slope, the measured LOS displacements will represent, almost completely, the real motion of these landslides. On the other hand, there are 133 landslides with $RI < 0.66$, where the geometry of the slope will prevent LOS displacement from fully representing the real landslide motion.

The Land Use Index (LU-index) calculation permits to analyze the effect of the land coverage on PS detectability [8]. Five main categories of land use, based on the theoretical radar signal penetration properties, are defined: (i) areas with buildings and structures; (ii) rocks, talus of wide dimensions, rocky areas with sparse vegetation; (iii) cultivated fields; (iv) scrublands with bushes and woods; and (v) water reservoirs. Land-use categories on Tramuntana range, extracted from the Corine Land Cover of the Balearic Islands, are homogenized and reduced to the five classes (Figure 3b). In Figure 3d, the PS number in each LU class is also shown. It can be seen that rocky outcrops with sparse vegetation show the highest number of PS, followed by scrubland with bushes and woods. This is due to the dominant presence of massive rock outcrops in vegetated areas all through the Tramuntana range. The calculation of the LU moda value for all the PS detected within each landslide reveals that 180 landslides (85% of the total) are monitored in vegetated environments with a dominant presence of massif rocks (classes 2 and 4) (Figure 3d).

5.2. LOS Displacement Projection along the Steepest Slope

PS displacement represents the one-dimensional projection in the satellite LOS direction of the real movement that actually occurs in all three dimensions. In order to overcome the differences given by ground geometry and satellite LOS, all the PS average yearly V_{LOS} (mm/yr) are projected into the same direction of the steepest slope, by means of Equation (2), obtaining V_{SLOPE} (mm/yr) [22,23]. Thus, this downslope projection is designed to compare landslide velocities with different slope orientations, enriching V_{LOS} information.

$$\begin{aligned} V_{SLOPE} &= V_{LOS} / C \\ C &= \cos \beta \end{aligned} \quad (2)$$

The C coefficient is the fraction of the 3D displacement that can be measured by PS targets and β the angle between the steepest slope and the LOS direction (Figure 4b). Several limitations of this method must be taken into account: when β is almost 90° , C is close to 0 and V_{SLOPE} tends to infinity. Following the work done by Herrera *et al.* [21], an absolute maximum value of $\beta = 72^\circ$ corresponding to $\cos \beta = 0.3$ is fixed and, as a result, V_{SLOPE} cannot be higher than 3.33 times the V_{LOS} . This threshold corresponds to the condition number of 15 proposed by Cascini *et al.* [22] as the number for the inversion matrix solving the algebraic system used for the projection process. In order to reduce any V_{SLOPE} exaggeration, it is assumed $C = -0.3$ when $-0.3 < C < 0$ and $C = 0.3$ when $0 < C < 0.3$. Whereas PS V_{SLOPE} values turn positive ($V_{SLOPE} > 0$) they are discarded [21]. This is because a positive V_{SLOPE} would represent uphill movement. Although positive displacements may be present at the toe of landslides where vertical movements can occur, the horizontal displacement vector should remain oriented downhill [21].

Additionally, the velocity for only PS localized over $\geq 5^\circ$ slopes is projected, since in this study area landslides are unreported when the slope is smaller. Finally, the downslope projection assumes that the local steepest slope is the most probable direction of movement and so the landslide motion is parallel to the slope. Nevertheless the surface runoff of some mass movements could be not parallel to the slope, e.g., at the crown of a rotational landslide where also vertical motions can take place.

In the Tramuntana range the V_{SLOPE} calculation reduces the V_{LOS} PS population to 45% (Table 2).

Even though the reduction of PS data is significant, this transformation improves their integration with the landslides inventory. Exploiting the V_{LOS} measurements, only 71 landslides (with almost 1 PS) show a negative displacement (*i.e.*, downhill displacement or away from the satellite), whereas 95 of them exhibit a positive V_{LOS} (*i.e.*, uplift or towards the satellite). As it was explained in the previous section, this is due to the distortion introduced by the satellite acquisition geometry with respect to the slope relief. Once the V_{LOS} is projected along the steepest slope, a total of 148 landslides reveal a negative displacement, among which 77 landslides (with almost 1 PS) show an average $V_{SLOPE} < -5$ mm/yr (Table 3).

Table 3. Amounts and velocity rates of PS ALOS populations.

	Landslides with PS Number ≥ 1	Landslides with PS Number > 4
N °Landslides PS V_{LOS}	166	96
$V_{LOS} < -3$	10	2
$-3 < V_{LOS} < +3$	144	88
$V_{LOS} > +3$	12	6
N °Landslides PS V_{SLOPE}	148	77
$V_{SLOPE} < -5$	77	42
$-10 < V_{SLOPE} < -5$	64	38
$V_{SLOPE} < -10$	13	7
Active Clusters with PS Out-Points Number > 4 PS		
N ° Active clusters		
$V_{LOS} < -3$		333
$V_{LOS} > +3$		455
$V_{SLOPE} < -5$		4189
$V_{SLOPE} < -10$		615

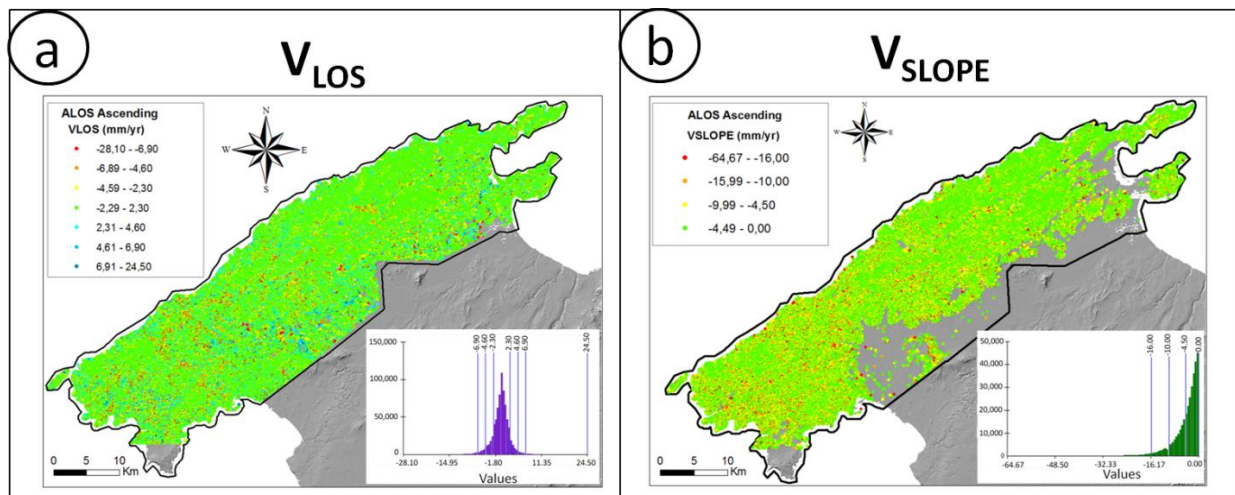
5.3. Velocity Thresholds Determination

Velocity thresholds need to be established for distinguishing moving from not moving PS. Some authors, such as Herrera *et al.* [21] and Righini *et al.* [9], consider 2 mm/yr as the V_{LOS} stability threshold for PSI C-band data. Other works [11] use a threshold of 5 mm/yr for V_{SLOPE} obtained by a calibration procedure. However, there are no previously published thresholds for PSI L-band data results, due to the reduced number of applications.

Herein, authors use velocity threshold criteria based on the statistical analysis of PS velocity distributions. As V_{LOS} and V_{SLOPE} PS populations show different velocity distribution patterns, being the first approximately normal (Gaussian) and the second negatively skewed due to the PS reduction, the two PS distributions are classified separately (Figure 4).

The classification of V_{LOS} into velocity classes is based on the Inter-Quantile Range (IQR) around zero (Figure 4a). The central position (Q2) is zero, while Q1 and Q3 are the upper and lower positions, found by adding/detracting the standard deviation (σ) value to Q2 ($0 \pm \sigma$). Thus, the IQR, which represents the “dispersion” of data around zero, is considered the stable threshold range. The further lower and upper velocity classes are derived using the σ value.

Figure 4. Velocity threshold classification: (a) IQR classification for V_{LOS} (b) V_{SLOPE} classification.



Thus, the velocity stable range for L-band radar displacement measurements (V_{LOS}) is basically chosen taking into account the statistical velocity distribution and the standard deviation of the ALOS dataset in the study area.

Most of the published PSI analyses establish the stability V_{LOS} threshold at ± 2 mm/yr [9,21]. Taking into account that V_{LOS} sensitivity increases with the radar frequency, a greater threshold would be expected for L-band (1.2 GHz). Evidently, ALOS L-band PS data have a higher standard deviation than C-band in similar conditions, but this outcome also depends on the number of images, on the temporal period and quality of selected points. In this case, L-band results are approaching C-band map quality with a reduced number of images (*i.e.*, 14 images) over a long time (*i.e.*, some years) period.

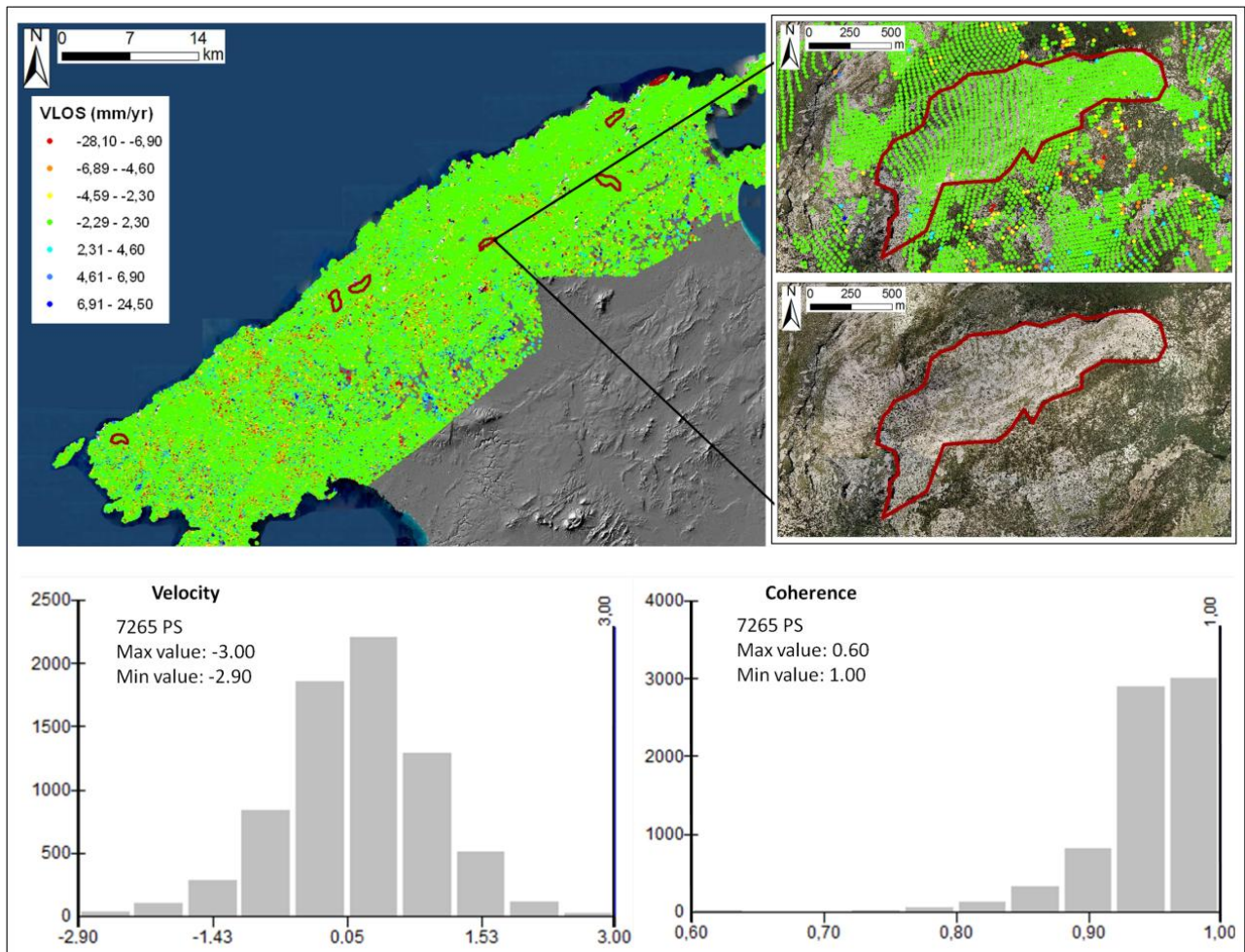
In Figure 5a total of 7,265 PS points (1% of the whole dataset) were selected within some different rock outcrops assumed as good stable scattering areas over the Tramuntana Range. These PS targets are characterized by a good coherence (values from 0.60 to 1.00) and show a V_{LOS} velocity distribution ranging from -2.9 to $+3$ mm/yr that is consequently assumed as a reasonable motionless velocity range.

Taking into account that the V_{SLOPE} PS population is negatively skewed, the classification of V_{SLOPE} into velocity classes is based on determining the V_{SLOPE} stable range where a certain percentage (*i.e.*, 68%) of the PS population is found from zero [21]. In the study area, the velocity ranges of the V_{LOS} and V_{SLOPE} PS distributions are ± 2.3 mm/yr and -4.5 mm/yr, respectively (Table 2).

In order to classify landslides as active or no-active, considering landslide average V_{LOS} and V_{SLOPE} velocities, the thresholds of ± 3 mm/yr for V_{LOS} and -5 mm/yr for V_{SLOPE} are chosen, being slightly greater than those identified for the PS population (*i.e.*, rounded up to the next integer) (Table 2).

Being this facet a critical and uncertain issue for radar landslide mapping and monitoring, another threshold is set at -10 mm/yr. This threshold, proposed by Mansour *et al.* [36] from a literature review, establish that moderate damages are produced to buildings and infrastructures when the displacement rate is between -10 and -100 mm. This threshold is adopted as the activity maps are elaborated, as final purpose, for supporting environmental planning and management strategies in order to highlight areas characterized by higher hydrogeological hazard, hence, they need to be addressed to potential damages detection and prevention.

Figure 5. PS Velocity and coherence distribution within some sample rocky outcrops assumed as stable over the Tramuntana range study area.

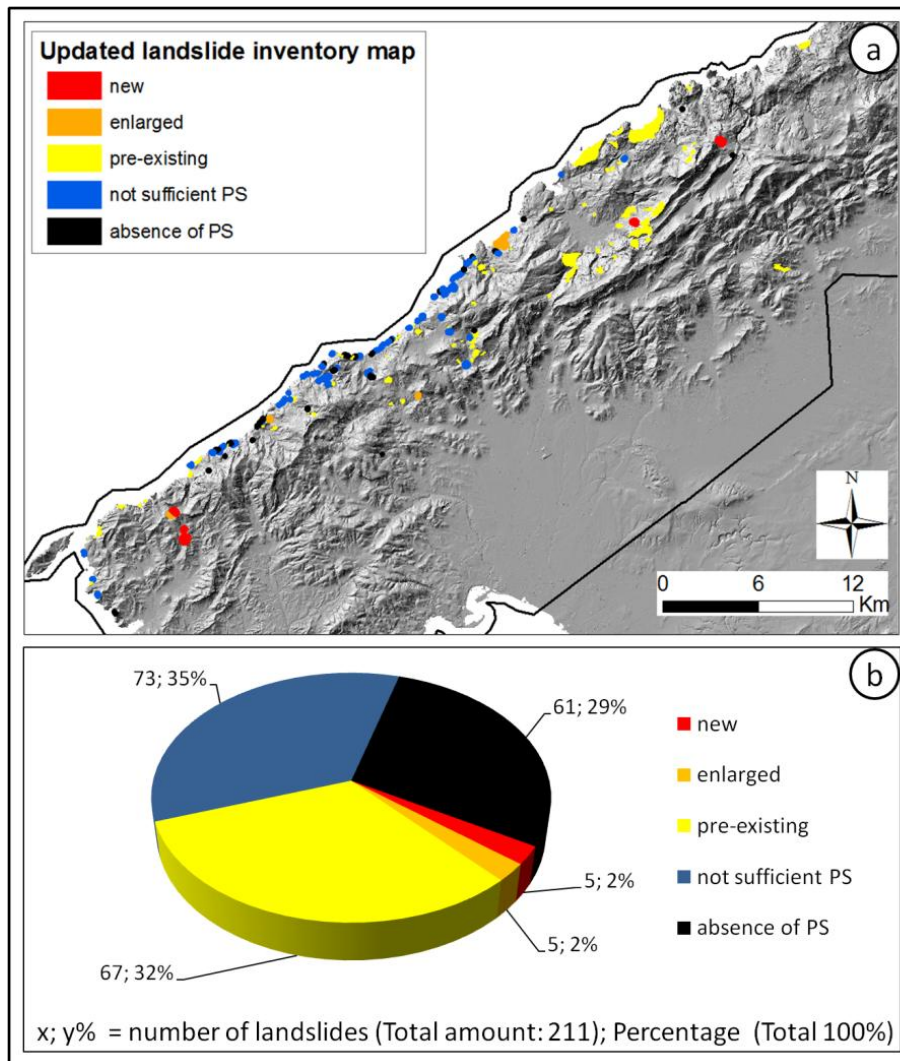


6. Activity Maps Generation

6.1. PSI Data Comparison with Landslide Inventory and Field Surveys

The landslides detection and mapping, by means of PSI, in the area of interest were carried out by exploiting the V_{LOS} and V_{SLOPE} displacements. The radar-interpretation method [5,9] throughout PS data, integrated with the analysis of auxiliary data (*i.e.*, DEM layer, topography, orthophotos) and field survey observations, allowed the improvement of the inventory, updating boundaries of pre-mapped phenomena, and detecting some new ones, not previously mapped. The final updated database totally includes 211 landslides, with 77 phenomena confirmed by radar interpretation corresponding to an area of 8.6 km². In particular (Figure 6), five landslides (2% of the total) are newly detected and 72 are previously mapped, among which five enlarged phenomena (2%) and 67 not modified phenomena (32%). It is worth to highlight that the interpretation of landslide motion rates was focused only on those phenomena with a minimum radar target density (*i.e.*, 4 PS), in order to increase the reliability of the representative velocity evaluations [6,8,21,37]. A field survey was performed on Tramuntana range in February 2013, and permitted to confirm the presence of new landslide phenomena and the boundaries enlargement.

Figure 6. (a) Updating of Landslide inventory map in Tramuntana Range and (b) statistical evaluation of landslide database improvement.

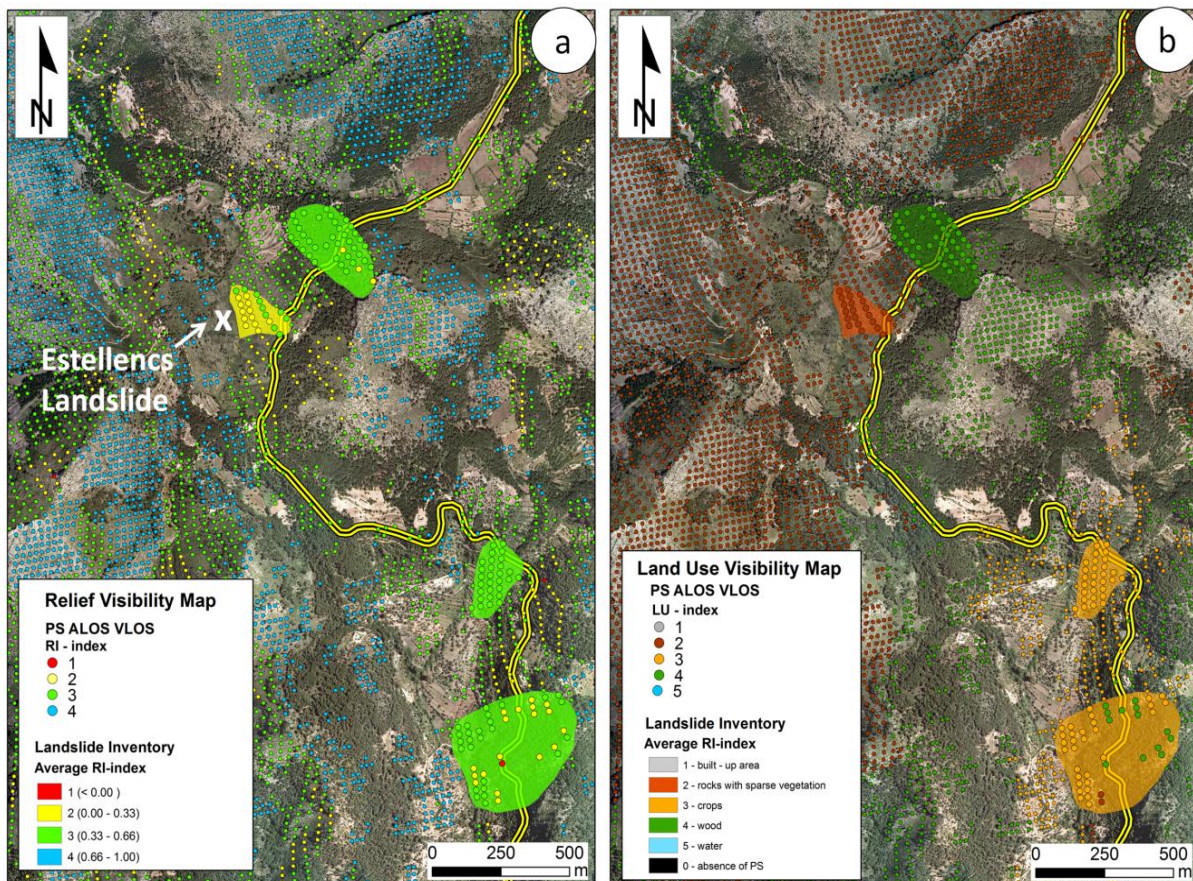


6.2. Landslide Activity Map

The “landslide activity map” integrates the PSI data (PS V_{LOS}) and the post-processing derived products (RI, LU, C, and V_{SLOPE}) with the improved landslide inventory. As a result, for every landslide the following information are obtained from all the PS located within the landslide boundaries: (i) the PS landslide visibility based on the geometry (RI average value) and on the land use (LU moda value); (ii) the percentage of the real landslide motion measured by the satellite (C average); and (iii) the average V_{LOS} and V_{SLOPE} (Figures 7–9).

Regarding the two maps of landslide average V_{LOS} and V_{SLOPE} velocities (Figures 8a and 9a), they are based respectively on the average V_{LOS} of all the PS retrieved within the boundaries of the phenomena and on the average V_{SLOPE} of the PS projected downslope and included within the landslide boundaries. A landslide activity map based on the average PS V_{SLOPE} is also produced, setting the landslide stability threshold as -10 mm/yr, corresponding to the literature threshold proposed by Mansour *et al.* [36], which deals with damages that could be produced by displacement with a given movement rate (Figure 8b).

Figure 7. Landslide activity maps: (a) Visibility map based on R-index; (b) Visibility map based on LU-Index.



In Figures 7–9, an example of the landslide activity maps in Estellencs area is shown. Three new landslide phenomena were mapped in this area, close to the landslide triggered in March 2010 (x in Figure 7a). This landslide exhibits the worst relief visibility (especially in the bottom part, Figure 7a), but the best land use visibility (rocks and sparse vegetation, Figure 7b). The PS measurements indicate that at least two of these landslides are active (Figure 8a) showing a $V_{LOS} > +3$ mm/yr (towards the satellite) due to the orientation of the slope with respect to the satellite acquisition geometry. For this reason all of these landslides show a negative C coefficient (Figure 8b), being necessary to project V_{LOS} along the steepest slope. As a result from the operation of downslope projection, their average V_{SLOPE} ranges from -9 to -13 mm/yr (Figure 9a), all of them being classified as active ($V_{SLOPE} < -5$ mm/yr) and with the potential to produce moderate damages ($V_{SLOPE} < -10$ mm/yr) to the Ma-10 road (Figure 9b). According to Mansour *et al.* [36], moderate road damages are produced by landslides, with velocities in the 10 to 100 mm/yr range, whereas major damages occur in the 100 to 1,600 mm/yr range. In this area, major damages were only produced in the Ma-10 road (2 Meuro reparation cost) by the Estellencs landslide (x in Figure 7a) in March 2010 [23,24].

Figure 8. Landslide activity maps: (a) Average V_{LOS} landslide map; (b) Projectability map based on C Coefficient.

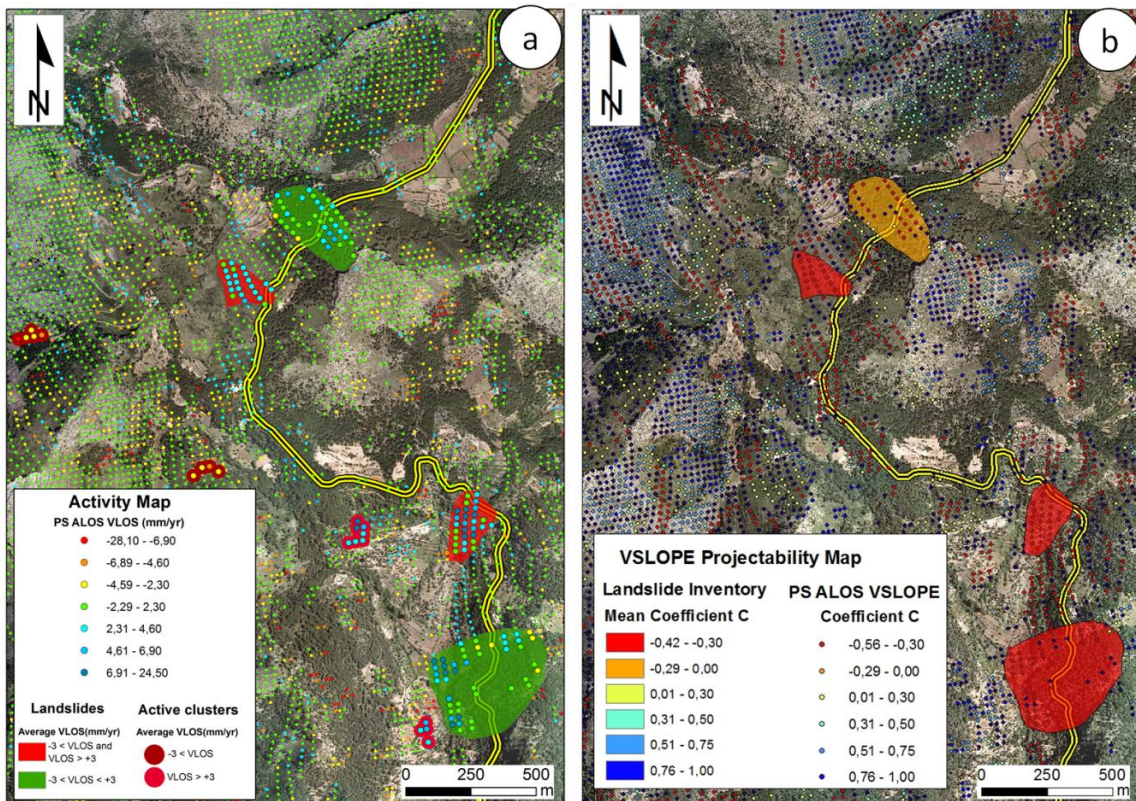
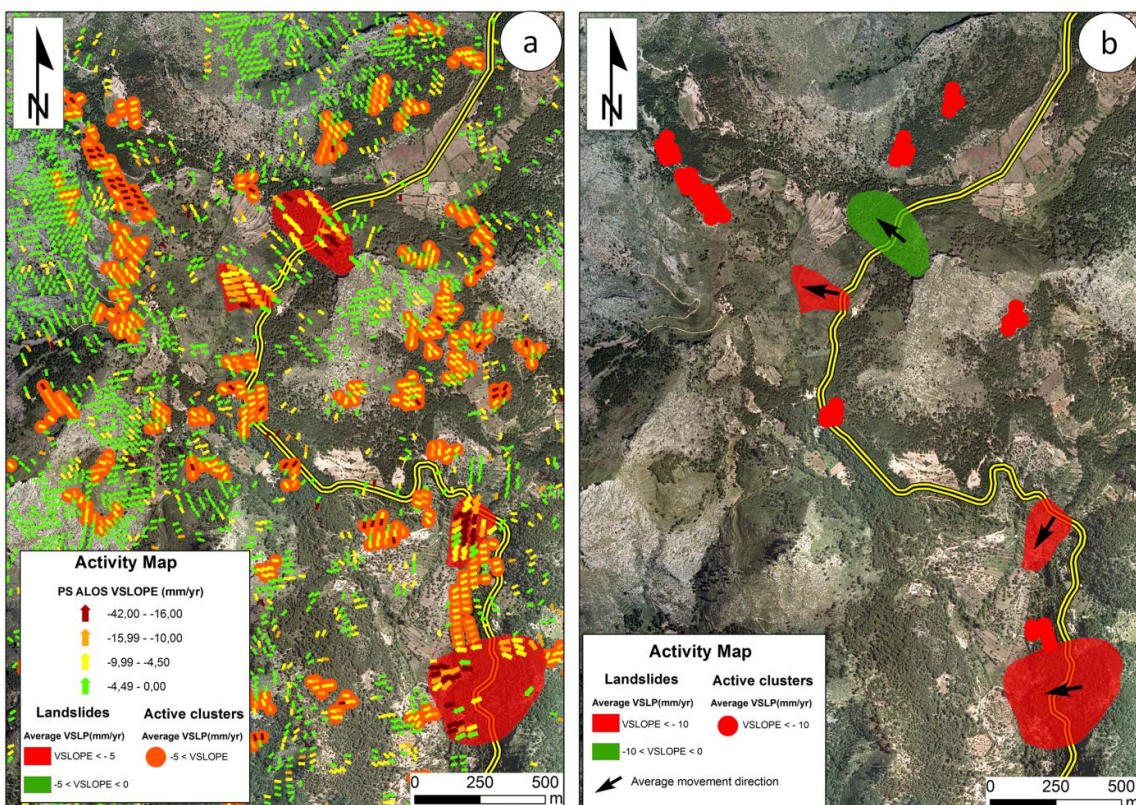
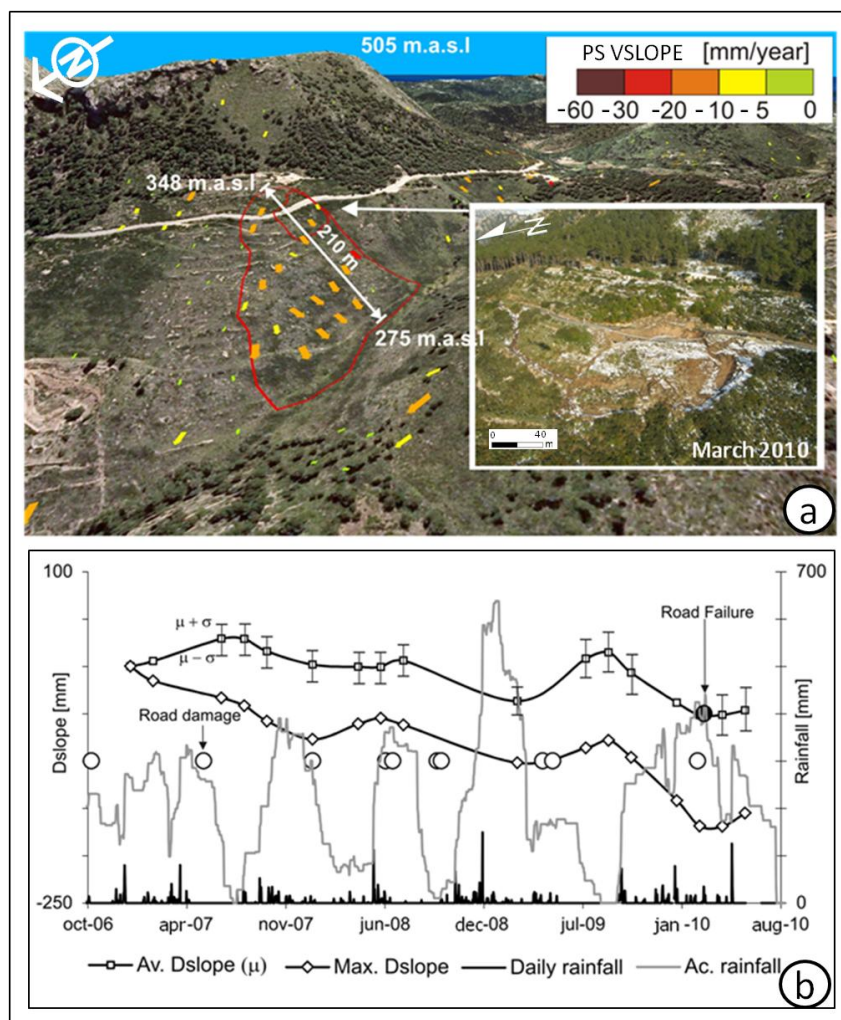


Figure 9. Landslide activity maps: (a) Average V_{SLOPE} landslide map; (b) Average V_{SLOPE} landslide map with -10 mm/yr threshold according to [31].



This landslide, a rotational movement with associated mudflow at the foot, was triggered on 8 March 2010, in soft Keuper sediments, after an intense rainy period (a peak of 436 mm of accumulated rain in the previous 90 days) (Figure 10). Nevertheless, before this date, since 2006, 11 moderate damage events were reported by the road maintenance service (Figure 10). During the ALOS PALSAR monitoring period (2007–2010) 22 PS were detected within the boundaries of this landslide, measuring an average V_{LOS} of +3 mm/yr, and an average V_{SLOPE} of -11 mm/yr oriented to the NW. Being the average coefficient for all the PS -0.14, the -0.3 correction factor C was introduced. In the case that this factor was not introduced the average V_{SLOPE} would be -30 ± 13 mm/yr, which is almost 10 times the average V_{LOS} . The PS time series are also projected into the steepest slope (D_{SLOPE}). The temporal evolution of the average D_{SLOPE} measured by all the PS reveals, in March 2010, a cumulated displacement of -46 ± 23 mm, reaching a maximum value of -170 mm in the upper part (Figure 10). Aliasing problems are probably responsible for the uplift observed from February to August 2009, since there are only two SAR images available for a 138-day period. However, an acceleration trend observed between August 2009 and March 2010 could be related to the acceleration of the moving mass before the total failure of the road occurred on 8 March 2010.

Figure 10. Mapped landslide in Estellencs area: (a) 3D view of enlarged landslide and photo of 8 March 2010, event; (b) Temporal evolution of total displacement rate projected downslope.



6.3. Ground Motion Activity Map

The “Ground motion activity map” is derived from the moving PS not included within landslide boundaries (hereafter called “outpoints”). These outpoints can be related either to unknown landslides or to other types of geomorphological processes, such as erosion or downhill creep, characteristic of mountainous environments [7,38]. In order to identify unstable areas, the outpoints with $V_{LOS} < -3$, $V_{LOS} > +3$ mm/yr, or $V_{SLOPE} < -5$ mm/yr are clustered following the procedure proposed by Meisina *et al.* [6]. These clusters derive from the 26 m radius of the circumscribed circle where the multi-look PS area is inscribed. Clusters of at least 4 PS are selected and their average velocity is computed, in order to identify potentially hazardous unmapped areas (the so-called “active clusters”). In the Tramuntana range, 788 active clusters were identified considering V_{LOS} , and 4189 considering V_{SLOPE} (Table 3). Taking into account the -10 mm/yr damage threshold proposed by Mansour *et al.* [36] and commented above, the amount of active clusters is reduced to 615 (Table 3). From this amount, 18 of them intersect the Ma-10 Road, being the most hazardous ones and requiring additional field surveys. Punctual field checks revealed that some of these active clusters are related to movements of soil fillings (road embankments, tailing dams from quarries, or waste dams from construction works).

7. Confidence Degree Evaluation

The confidence degree of landslide and ground motion activity maps can be evaluated throughout their comparison with external independent sources, such as damages inventories, *in situ* measurements, field checks, *etc.* This evaluation aims at assessing if measured displacement represents landslides dynamics. It is important to highlight that the reliability on the PSI measurement itself is not evaluated, but whether this measurement is related to landslide activity or not. Three confidence degree levels are established—low, medium, and high—depending upon ground truth data availability.

In the Tramuntana range, the confidence degree determination of the activity maps was performed through the use of Ma-10 road damage database, which is the most relevant element at risk with high exposure in the area of interest. Comparing LSI and damages to the road, it can be seen that 18 landslides intersect the Road M-10: five of them caused damages in 2007–2010, and 13 produced damages before 2007 (Table 4).

ALOS PS data acquired in 2007–2010 monitored 11 landslides intersecting the Road, among which two phenomena produced damages in this period and nine produced damages before 2007, classified as “True” and “False” landslides, respectively (Table 4). The two landslide polygons that intersect the road and produced damages in 2007–2010, detected by ALOS data, show an average V_{SLOPE} of -8 and -11 mm/yr. According to the 10 mm/yr landslide damage threshold adopted by Mansour *et al.* [36], the former would be a “True Negative” (*i.e.*, inactive landslide producing damages), whereas the latter would be a “True Positive” (*i.e.*, active landslide producing damages). Among the nine landslides detected by ALOS that did not produce damages to the road, three of them are “False Positives” (*i.e.*, active landslides not producing damages), and six of them are “False Negatives” (*i.e.*, inactive landslides not producing damages).

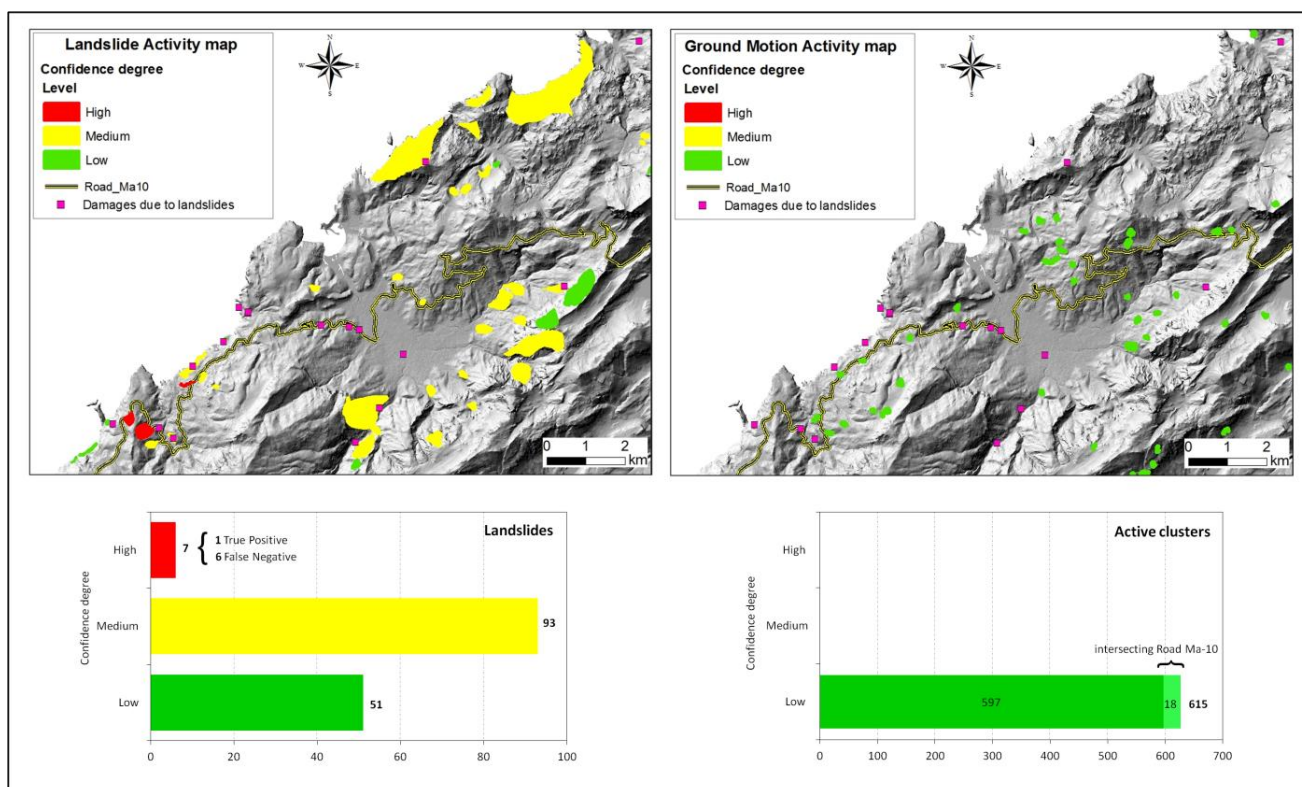
Table 4. Amounts and velocity rates of PS ALOS populations.

Reported Road Ma-10 Damages	Reported Road Damages Detected by ALOS PS in 2007–2010		Average Velocity	
	True	False	Positive	Negative
			($V_{SLOPE} < -10$ mm/yr)	($V_{SLOPE} > -10$ mm/yr)
5 landslides (damages in 2007–2010)	2		1	1
13 landslides (damages previous to 2007)		9	3	6

According to this analysis, our success rate is 63% over the 11 landslides that were monitored with ALOS data in the period 2007–2010. Consequently, a high confidence degree is attributed to seven landslides, specifically, one “True Positive” and six “False Negative” phenomena, as measured displacements (active/inactive) can be correlated with reported damages (occurred/not occurred).

A medium confidence degree is assigned to the rest of detected landslides (93 phenomena) with more than 4 PS or more than 50% of their spatial extension covered by PS pixel area. In these landslides, it cannot be confirmed that measured displacement (active/inactive) is related to landslide activity. However it is the most probable explanation since displacement measurements were gathered within the landslide boundaries.

Figure 11. Confidence degree evaluation of Activity maps.



A low confidence degree is attributed to those landslides where neither sufficient number of PS data (or no PS at all), nor ground information, provide evidence of terrain displacement. This confidence

degree is also attributed to all the active clusters derived from moving PS out-points, since the mechanism of the triggering cause is unknown. Thus, a low confidence degree is allocated to 51 detected landslides with less than 4 PS or less than 50% of their surface covered by PS pixel area, and to all the 615 active clusters with an average $V_{\text{SLOPE}} < -10$ mm/yr, 18 of which intersect the Ma-10 Road (Figure 11).

8. Discussion

Overall, the PSI analysis of ALOS PALSAR images in the Tramuntana Range reveals a good performance for mapping and monitoring landslides in a rural environment, due to the high penetration capacity of the L-band sensor and a sufficient sampling of SAR images for a three-year temporal span (2007–2010). This time interval coincides with the most critical rainy and cold period of the study area, when several landslide phenomena were triggered.

The reduced geometrical decorrelation combined with the long satellite revisiting time in L-band (*i.e.*, 46 days for ALOS system) leads to successful applications of L-band data especially for conventional differential interferometry, *e.g.*, [39–42]. However, the use of L-band PSI allows a feasible investigation on natural areas such as Tramuntana range covered by rocky outcrops and scrubland, due to its lower volumetric and temporal decorrelation in vegetated zones with respect to C-band data, which are usually used in literature [6,9,37] for landslide detection and mapping. Furthermore, L-band SAR data yields an intrinsic capability to detect faster ground movements with respect to C-band, just due to the longer orbital repeat cycle and wavelength.

The PSI post-processing stage permits to evaluate how good is the area to backscatter the radar signal, permitting to assess the suitability of the detected PS in terms of the satellite acquisition geometry, the relief, and the land-use. In the Tramuntana range, 37% of the landslides exhibit the best geometry to be monitored (*i.e.*, average RI > 0.66; slope direction approximately parallel to the satellite LOS direction), whereas for 63% a certain geometrical distortion will be introduced in the PS measurement (average RI < 0.66). Concerning the land use, rocky outcrops with sparse vegetation and scrubland with bushes or woods show the highest number of PS, because this land use class represents the most widespread one in the Tramuntana range and because of the presence of many good stable reflectors retrieved in L-band. In particular, 180 landslides (85% of the total) are successfully monitored in a vegetated environment with a dominant presence of massif rocks (23 PS/landslide on average), confirming the high penetration capacity on the ground of ALOS PALSAR sensor.

The projection of the V_{LOS} along the steepest slope permits to homogenize landslide velocities with different slope orientations. This procedure significantly reduces the PS population (45% in the Tramuntana range), but enriches the V_{LOS} interpretation. The number of landslides monitored with a sufficient number of PS (> than 4 PS or more than 50% of the landslide area covered by PS) using the V_{LOS} dataset is 96, being reduced to 80% (77 landslides) when V_{SLOPE} dataset is considered.

However, it is worth to highlight that the downslope projection of V_{LOS} values is only valid when the landslide movement is parallel to the slope. This requirement typically holds for planar slides with slow-moving flow, but not for rotational landslides, which generally possess a vertical movement at the crown and horizontal movement at the toe. In the Tramuntana range, the projection procedure turns

out to be suitable since the most frequent phenomena, besides rockfalls, are translational slides, debris slides, and earth/debris flows.

In order to classify landslides velocity from L-band radar displacement measurements, the thresholds of ± 3 mm/yr for landslide average V_{LOS} and -5 mm/yr for landslide average V_{SLOPE} are chosen. These values are slightly greater than those identified for the PS population (*i.e.*, rounded up to the next integer) (Table 2), and they account for 77% and 68%, respectively, of the PS population. Most of the published landslide PSI analyses have been conducted on C-band (5.3 GHz) and establish the stability V_{LOS} threshold at ± 2 mm/yr [9,21]. Taking into account that the V_{LOS} sensitivity increases with the radar frequency, a proportionally greater threshold would be expected for L-band (1.2 GHz), *i.e.*, higher by a factor of more than four. ALOS L-band data have a higher standard deviation than C-band in similar conditions, but this feature also depends on the number of images, the temporal period and the quality of selected points. In this case, in the Tramuntana range L-band results are close to C-band map quality with a reduced number of images over a long acquisition time period. Moreover, it is worth to underline that ALOS PS data in the study area show a high coherence and hence a low standard deviation is achieved even within L-band dataset. Therefore, the chosen ± 3 mm/yr threshold that is only 50% greater than the commonly adopted C-band threshold is assumed as a reasonable range for landslide movements based on L-band V_{LOS} distribution.

By the way, being a critical issue for landslide monitoring, and the adopted threshold potentially small, a -10 mm/yr threshold is set to identify active landslides. This threshold, proposed by Mansour *et al.* [36] from a literature review, establishes that moderate damages are produced to buildings and infrastructures when the displacement rate is between -10 and -100 mm/yr. The adoption of this threshold for landslide activity maps elaboration is adequate, as the final purpose of these maps is to highlight areas where potential damages could be produced, as a support to environmental planning and management strategies.

The landslide activity map integrates the PSI data, the post-processing derived products (RI, LU, C, and V_{SLOPE}) with the landslide inventory (LSI), permitting to improve the interpretation of measured displacements with respect to landslide dynamics. In the Tramuntana range, 35 landslides were identified as inactive and 42 of them as active, from which seven of them overpass the -10 mm/yr threshold.

The “Ground motion activity map” consists of a set of active PS clusters that are not included within the mapped landslide boundaries, and that can be related to either unknown landslides or to other types of geomorphological processes. In the Tramuntana range 615 active clusters show a velocity above the 10 mm/yr threshold (18 of them intersecting the Ma-10) representing potentially hazardous areas.

The confidence degree of landslide and ground motion activity maps is evaluated throughout their comparison with external independent sources, aiming to assess if measured displacement represents the landslide dynamics or not. In the Tramuntana range, the confidence degree determination of the activity maps was performed through the use of the damages database on Ma-10 road, which is the most relevant element at risk with high exposure in the area of interest. A high confidence degree is attributed to seven landslides as measured displacements (active/inactive) can be correlated with reported damages (occurred/not occurred). Particular attention is paid to Estellencs landslide, where the acceleration trend observed between August 2009 and March 2010 could be related to the acceleration of the moving mass before the total failure of the road occurred on 8 March 2010.

A medium confidence degree is assigned to 93 landslides as PSI measured displacement (active/inactive) coincide with the landslide boundaries, but there are no external sources to confirm landslide activity. A low confidence degree is attributed to 51 landslides where an insufficient number of PS (or no PS at all) provides evidence of terrain displacement. This confidence degree is also attributed to the 615 detected active clusters since their mechanism of the triggering cause is unknown.

Overall, the landslide database on the Tramuntana range (Figure 1e) has been enhanced by detecting and analyzing landslide phenomena and further unstable areas (Figure 11) characterized by higher motion rates. The reliability of the delivered maps has been assessed through the confidence degree evaluation, making this “added value” interesting and useful for the policy decisions and strategies concerning risk mitigation and urban-environmental design.

9. Conclusions

In this paper landslide and ground motion activity maps are elaborated through the use of PS (Persistent Scatterers) ALOS data in L-band, over the Tramuntana Range in the island of Majorca (Spain), extensively affected by mass movements across time, especially during the last years.

The landslide activity map provides, for every monitored landslide, an assessment of the PS visibility according to the relief, land use and satellite acquisition parameters. The average V_{LOS} and V_{SLOPE} velocities are also attributed to every landslide, providing an estimate of their state of activity and their potential to cause damages. Additionally, a ground motion activity map is also generated, based on active PS clusters not included within any mapped landslide phenomenon. Finally, a confidence degree evaluation is carried out to attest the reliability of measured displacements to represent landslide dynamics. In the Tramuntana range 42 landslides were identified as active ($V_{SLOPE} < -5\text{mm/yr}$) and seven of them with a potential to produce moderate damage ($V_{SLOPE} < -10\text{mm/yr}$). A high confidence degree was attributed to seven landslides, a medium one to 93, and a low confidence degree to 51 landslide phenomena and to 615 active clusters, 18 of them intersecting the Ma-10 and thus representing further potentially hazardous areas.

Overall, the outcomes of this work reveal the usefulness of landslide activity maps for environmental planning activities, being exportable to other radar data and different geomorphological settings.

Acknowledgments

This work was carried out by Silvia Bianchini during a research internship in the Geohazards InSAR laboratory (InSARlab), Geoscience Research Department of the Geological Survey of Spain (IGME, Madrid), within the DORIS project (Ground Deformation Risk Scenarios: an Advanced Assessment Service) funded by the EC-GMES-FP7 initiative (Grant Agreement n 242212).

The damage inventory was provided by the Civil Protection of Majorca Island. The pre-existing available mass-movement inventory was carried out collecting various historical compilation of the slope movements on Majorca island by Mateos *et al.* [23] and Mateos [27] and *in situ* information and provided with the support from the Emergency and Road Maintenance Services of Balearic Islands.

Conflicts of Interest

The authors declare no conflict of interest.

References

1. Mantovani, F.; Soeters, R.; Van Western, C.J. Remote Sensing techniques for landslide studies and hazard zonation in Europe. *Geomorphology* **1996**, *15*, 213–225.
2. Ferretti, A.; Prati, C.; Rocca, F. Permanent Scatterers in SAR Interferometry. *IEEE Trans. Geosci. Remote Sens.* **2001**, *39*, 8–20.
3. Hilley, G.E.; Burgmann, R.; Ferretti, A.; Novali, F.; Rocca, F. Dynamics of slow-moving landslides from Permanent Scatterer analysis. *Science* **2004**, *304*, 1952–1955.
4. Farina, P.; Moretti, S.; Colombo, D.; Fumagalli, A.; Manunta, P. Landslide Risk Analysis by Means of Remote Sensing Techniques: Results from the ESA/SLAM project. In Proceedings of the International Geoscience and Remote Sensing Symposium (IGARSS), Anchorage, Alaska, 20–24 September 2004; pp. 62–65.
5. Farina, P.; Colombo, D.; Fumagalli, A.; Marks, F.; Moretti, S. Permanent Scatterers for landslide investigations: outcomes from the ESA-SLAM project. *Eng. Geol.* **2006**, *88*, 200–217.
6. Meisina, C.; Zucca, F.; Notti, D.; Colombo, A.; Cucchi, G.; Giannico, C.; Bianchi, M. Geological Interpretation of PSInSAR Data at Regional Scale. *Sensors* **2008**, *8*, 7469–7492.
7. Herrera, G.; Davalillo, J.C.; Mulas, J.; Cooksley, G.; Monserrat, O.; Pancioli, V. Mapping and monitoring geomorphological processes in mountainous areas using PSI data: Central Pyrenees case study. *Nat. Hazards Earth Syst. Sci.* **2009**, *9*, 1587–1598.
8. Notti, D.; Davalillo, J.C.; Herrera, G.; Mora, O. Assessment of the performance of X-band satellite radar data for landslide mapping and monitoring: Upper Tena Valley case study. *Nat. Hazards Earth Syst. Sci.* **2010**, *10*, 1865–1875.
9. Righini, G.; Pancioli, V.; Casagli, N. Updating landslide inventory maps using Persistent Scatterer Interferometry (PSI). *Int. J. Remote Sens.* **2012**, *33*, 2068–2096.
10. Žibret, G.; Komac, M.; Jemec, M. PSInSAR displacements related to soil creep and rainfall intensities in the Alpine foreland of western Slovenia. *Geomorphology* **2012**, *175–176*, 107–114.
11. Cigna F.; Bianchini S.; Casagli N. How to assess landslide activity and intensity with Persistent Scatterer Interferometry (PSI): The PSI-based matrix approach. *Landslides* **2013**, *10*, 267–283.
12. Liu, P.; Li, Z.; Hoey T.; Kincal, C.; Zhang, J.; Zeng, Q.; Muller, J. Using advanced InSAR time series techniques to monitor landslide movements in Bading of the Three Gorges region, China. *Int. J. Appl. Earth Obs. Geoinf.* **2013**, *21*, 253–264.
13. Crosetto, M.; Monserrat, O.; Iglesias, R.; Crippa, B. Persistent Scatterer Interferometry: potential, limits and initial C- and X-band comparison. *Photogramm. Eng. Remote Sens.* **2010**, *76*, 1061–1069.
14. Lu, P.; Casagli, N.; Catani, F.; Tofani, V. Persistent Scatterers Interferometry Hotspot and Cluster Analysis (PSI-HCA) for detection of extremely slow-moving landslides. *Int. J. Remote. Sens.* **2012**, *33*, 466–489.

15. Lu, P.; Catani, F.; Tofani, V.; Casagli, N. Quantitative hazard and risk assessment for slow-moving landslides from Persistent Scatterer Interferometry. *Landslides* **2013**, doi:10.1007/s10346-013-0432-2.
16. Herrera, G.; Notti, D.; Garc ía-Davalillo, J.C.; Mora, O.; Cooksley, G.; S á nchez, M.; Arnaud, A.; Crosetto, M. Analysis with C- and X-band satellite SAR data of the Portalet landslide area. *Landslides* **2011**, *8*, 195–206.
17. Bovenga, F.; Wasowski, J.; Nitti, D.O.; Nutricato, R.; Chiaradia, M.T. Using COSMO/SyMed X-band and ENVISAT C-band SAR interferometry for landslides analysis. *Remote Sens. Environ.* **2012**, *119*, 272–285.
18. Tofani, V.; Raspini, F.; Catani, F.; Casagli, N. Persistent Scatterer Interferometry (PSI) Technique for landslide characterization and monitoring. *Remote Sens.* **2013**, *5*, 1045–1065.
19. Strozzi, T.; Ambrosi, C.; Raetz, H. Interpretation of aerial photographs and satellite SAR Interferometry for the inventory of landslides. *Remote Sens.* **2013**, *5*, 2554–2570.
20. Del Ventisette, C.; Ciampalini, A.; Manunta, M.; Calò, F.; Paglia, L.; Ardizzone, F.; Mondini, A.C.; Reichenbach, P.; Mateos, R.M.; Bianchini, S.; *et al.* Exploitation of large archives of ERS and ENVISAT C-band SAR data to characterize ground deformations. *Remote Sens.* **2013**, *5*, 3896–3917.
21. Herrera, G.; Gutiérrez, F.; Garc ía-Davalillo, J.C.; Guerrero, J.; Galve, J.P.; Fernández-Morodo, J.A.; Cooksley, G. Multi-sensor advanced DInSAR monitoring of very slow landslides: the Tena valley case study (central Spanish Pyrenees). *Remote Sens. Environ.* **2013**, *128*, 31–43.
22. Cascini, L.; Fornaro, G.; Peduto, D. Advanced low- and full-resolution DInSAR map generation for slow-moving landslide analysis at different scales. *Eng. Geol.* **2010**, *112*, 29–42.
23. Colesanti, C.; Wasowski, J. Investigating landslides with space-borne Synthetic Aperture Radar (SAR) Interferometry. *Eng. Geol.* **2006**, *88*, 173–199.
24. Mateos, R.M.; Aza ñ on, J.M. Los movimientos de ladera en la Sierra de Tramuntana de la Isla de Mallorca: Tipos, características y factores condicionantes. *Rev. Soc. Geol. España.* **2005**, *18*, 89–99.
25. Mateos, R.M.; Garc ía-Moreno, I.; Herrera, G.; Mulas, J. Damage Caused by Recent Mass-Movements in Mallorca (Spain), a Region with a High Risk due to Tourism. In Proceedings of The Second World Landslide Forum, Rome, Italy, 3–9 October 2011; p. 35.
26. Mateos, R.M.; Garc ía-Moreno, I.; Aza ñ on, J.M. Freeze-thaw cycles and rainfall as triggering factors of mass movements in a warm Mediterranean region: The case of the Tramuntana Range (Mallorca, Spain). *Landslides* **2012**, *9*, 417–432.
27. Gelabert, B.; Sabat, F.; Rodríguez-Perea, A. A structural outline of the Serra de Tramuntana of Mallorca (Balearic Islands). *Tectonophysics* **1992**, *203*, 167–183.
28. Mateos, R.M.; Aza ñ on, J.M.; Morales, R.; López-Chicano, M. Regional prediction of landslides in the Tramuntana Range (Mallorca) using probability analysis of intense rainfall. *Geomorphology* **2007**, *51*, 287–306.
29. Alvaro, M. La tectónica de cabalgamientos de la Sierra Norte de Mallorca (Islas Baleares). *Bol. Geol. Min.* **1987**, *98*, 34–41.
30. Mateos, R.M. Los Movimientos de Ladera en la Serra de Tramuntana (Mallorca). Caracterización Geomecánica y Análisis de Peligrosidad. Ph.D. Thesis, Colección Digital de Tesis de la Universidad Complutense de Madrid, Madrid, Spain, 2006.

31. Cruden, D.M.; Varnes, D.J. Landslide Types and Processes. In *Landslides: Investigation and Mitigation*: Sp. Rep. 247; Turner, A.K., Schuster, R.L., Eds.; Transportation Research Board, National research Council, National Academy Press: Washington, DC, USA, 1996; pp. 36–75.
32. Arnaud, A.; Adam, N.; Hanssen, R.; Inglada, J.; Duro, J.; Closa, J.; Eineder, M. ASAR ERS Interferometric Phase Continuity. In Proceedings of the International Geoscience and Remote Sensing Symposium (IGARSS), Toulouse, France, 21–25 July 2003.
33. Duro, J.; Closa, J.; Biescas, E.; Crosetto, M.; Arnaud, A. High Resolution Differential Interferometry Using Time Series of ERS and ENVISAT SAR Data. In Proceedings of 6th Geomatic Week Conference, Barcelona, Spain, 8–11 February 2005.
34. Colombo, A.; Mallen, L.; Pispico, R.; Giannico, C.; Bianchi, M.; Savio, G. Mappatura regionale delle aree monitorabili mediante l'uso della tecnica PS. In Proceedings of 10th National Conference ASITA, Bolzano, Italy, 4–17 Novembre 2006.
35. Plank, S.; Singer, J.; Minet, C.; Thruro, K. Pre-survey suitability evaluation of the differential synthetic aperture radar interferometry method for landslide monitoring. *Int. J. Remote Sens.* **2012**, *33*, 6623–6637.
36. Mansour, M.F.; Morgenstern, N.R.; Derek Martin, C. Expected damage from displacement of slow-moving slides. *Landslides* **2011**, *8*, 117–131.
37. Bianchini, S.; Cigna, F.; Righini, G.; Proietti, C.; Casagli, N. Landslide HotSpot Mapping by means of Persistent Scatterer Interferometry. *Environ. Earth Sci.* **2012**, *67*, 1155–1172.
38. Wasowski, J.; Refice, A.; Bovenga, F.; Nutricato, R.; Gostelow, P. On the applicability of SAR Interferometry techniques to the detection of slope deformations. In Proceedings of 9th International Association of Engineering Geologists (IAEG) Congress, Durban, South Africa, 16–20 September 2002.
39. Strozzi, T.; Farina, P.; Corsini, A.; Ambrosi, C.; Thüring, M.; Zilger, J.; Wiesmann, A.; Wegmüller, U.; Werner C. Survey and monitoring of landslide displacements by means of L-band satellite SAR interferometry. *Landslides* **2005**, *2*, 193–201.
40. Engelbrecht, J.; Inggs, M. Differential interferometry techniques on L-band data employed for the monitoring of surface subsidence due to mining. *South Afr. J. Geomatics* **2013**, *2*, 82–93.
41. Zhou, L.; Zhang, D.; Wang, J.; Huang, Z.; Pan, D. Mapping land subsidence related to underground coal fires in the Wuda Coalfield (Northern China) using a small stack of ALOS PALSAR differential interferograms. *Remote Sens.* **2013**, *5*, 1152–1176.
42. Garc ía-Davalillo, J.; Herrera, G.; Notti, D.; Strozzi T.; Álvarez-Fernández, I. DInSAR analysis of ALOS PALSAR images for the assessment of very slow landslides: The Tena Valley case study. *Landslides* **2013**, doi:10.1007/s10346-012-0379-8.