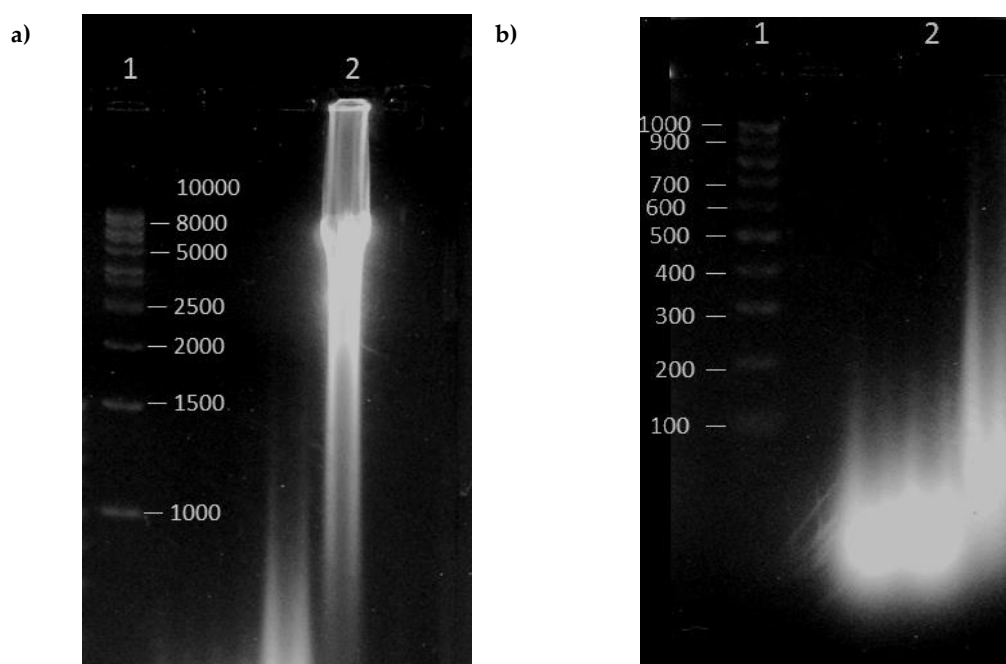
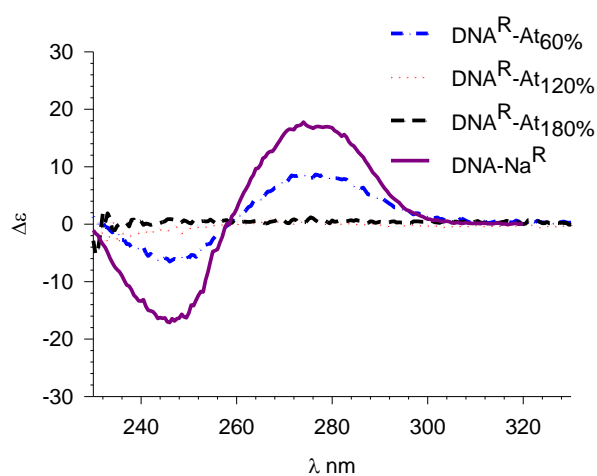


# Supplementary Materials: Interaction between DNA and Drugs Having Protonable Basic Groups: Characterization through Affinity Constants, Drug Release Kinetics, and Conformational Changes

Liliana P. Alarcón, Yolima Baena and Rubén H. Manzo



**Figure S1.** Agarose gel electrophoresis of DNA-Na was run on 1% agarose and visualized with SYBR Green I. a) lane 1 DNA size standard 1 Kb ladder; lane 2 DNA-Na<sup>R</sup>. b) Lane 1 DNA size standard 100 bp low ladder; lane 2 DNA-Na.



**Figure S2.** Circular dichroism spectra of an aqueous dispersion of reference DNA-Na<sup>R</sup> and DNA-At<sub>60-180</sub> complex.