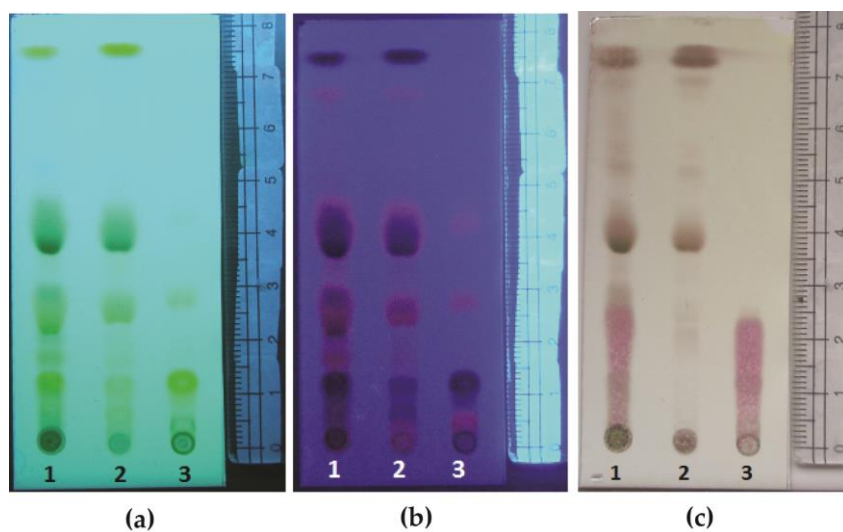


## SUPPLEMENTARY MATERIALS



**Figure S1.** Chromatogram (TLC profile) of *P. lanceolata* extract after chlorophyll removal using *n*-hexane partition. (1) Dichloromethane extract of *P. lanceolata* leaves; (2) *n*-Hexane-soluble fraction and (3) *n*-Hexane-insoluble fraction (HIFPL) of the *P. lanceolata* leaf extract. Partition of the extract with *n*-hexane resulted in the removal of non-polar constituents, including chlorophylls and other non-polar inert constituents to yield HIFPL. Thin layer chromatography analysis was performed on a silica gel F254 using eluent of *n*-hexane: ethyl acetate (4:1). The TLC spots were detected in UV254 nm (a), UV366 nm (b) and after spraying with cerium sulfate followed by heating at 105 °C for 4 minutes (c).