

Article

## The Effects of Air Permeability, Background Ventilation and Lifestyle on Energy Performance, Indoor Air Quality and Risk of Condensation in Domestic Buildings

Arman Hashemi <sup>1,†,\*</sup> and Narguess Khatami <sup>2,†</sup>

<sup>1</sup> Centre for Sustainable Development, Department of Engineering, University of Cambridge, Cambridge CB2 1PZ, UK

<sup>2</sup> School of Civil and Building Engineering, Loughborough University, Loughborough LE11 3TU, UK; E-Mail: n.khatami@lboro.ac.uk

† These authors contributed equally to this work.

\* Author to whom correspondence should be addressed; E-Mail: a.hashemi@eng.cam.ac.uk; Tel.: +44-(0)-1223-760-561.

Academic Editor: Masa Noguchi

*Received: 12 February 2015 / Accepted: 31 March 2015 / Published: 8 April 2015*

---

**Abstract:** Effective and efficient ventilation is essential when improving energy performance and Indoor Air Quality (IAQ) of buildings. Reducing air permeability can considerably improve the energy performance of buildings; however, making the buildings more airtight may result in lower rates of natural ventilation which may in turn increase the risks of condensation and unacceptable IAQ. This study evaluates the effects of different air permeability rates, background ventilation and occupants' lifestyles on the energy performance as well as the risk of condensation and CO<sub>2</sub> concentration in domestic buildings. Dynamic computer simulations were conducted in EnergyPlus. Results indicated direct relations between the ventilation rates, energy performance and IAQ. Higher air permeability along with background ventilation resulted in considerably better IAQ while energy consumption increased by up to four times. Occupants' lifestyles were identified as a major contributor to the risk of condensation.

**Keywords:** energy efficiency; air permeability; airtightness; natural ventilation; indoor air quality; condensation; lifestyle; domestic buildings

---

## 1. Introduction

Britain has the oldest housing stock in the developed world [1]. According to BRE [2] more than 65% and 49% of domestic buildings in the UK have uninsulated walls and single glazed windows respectively. It is estimated that domestic buildings are responsible for one third of the UK carbon emissions [3,4]. Improving the quality and energy performance of new and existing buildings has therefore been one of the major priorities of the UK Government during the recent years. This is not only to achieve the CO<sub>2</sub> emission targets set for 2050 [5,6] but also to tackle fuel poverty which affects more than 2.3 million households [7]. National schemes such as the Green Deal [8] and Warm Front intend to improve energy efficiency of buildings through better insulation and reduced air permeability to reduce the risk of thermal discomfort as well as unnecessary heat loss [9]. Building regulations and standards have also been increasing thermal insulation and airtightness requirements to improve the energy performance of new and refurbished buildings in the UK.

According to Xing *et al.* [10] improving airtightness is an effective way of reducing energy consumption in buildings. Yet, high airtightness could result in insufficient ventilation rates which may in turn lead to poor indoor air quality (IAQ), high risk of condensation and reduced comfort and productivity [11,12]. According to the Scottish Government [13], when refurbishing existing properties, heating, ventilation and thermal insulation should be considered together as ignoring one could result in poor indoor conditions, higher risk of condensation and unnecessary energy consumption.

The results of a study by Staepels *et al.* [14] suggest that increasing airtightness in new buildings would not necessarily deteriorate the IAQ as Relative Humidity (RH%) and CO<sub>2</sub> levels may remain within the acceptable ranges. On the contrary, results of another study by of Hobday [15] reveal that although increasing airtightness helps to reduce energy consumption and risk of thermal discomfort, it could considerably increase the risk of poor IAQ. Boulanger *et al.* [16] also reported considerably higher RH% levels in airtight buildings. Moreover, results of studies by Elsharkawy and Rutherford [17] indicate that in energy efficient buildings, the occupants' lifestyle does not change as fast as the other parameters and therefore, in actual buildings both energy consumption and IAQ are worse than the predicted conditions.

For very low air permeability rates, such as 1 m<sup>3</sup>/h.m<sup>2</sup>@50 pa in Zero Carbon Homes, mechanical ventilation systems are required [18,19] to maintain an acceptable IAQ in the building in order to avoid negative effects on the health and wellbeing of the occupants. Nevertheless, the results of a study by Wing and Huang [20] show that applying mechanical ventilation in domestic buildings increased the number of sick building syndrome incidents and affected occupants' perceived comfort. Although the situation slightly improved for buildings where fresh air was supplied by means of mechanical ventilation, CO<sub>2</sub> levels and occupants comfort remained worse than naturally ventilated buildings.

It should be noted that application of mechanical ventilation in UK domestic buildings is not a common practice and natural ventilation remains the main strategy for the majority of new and refurbished houses in the UK. Reducing air permeability could therefore result in higher risk of condensation, and unacceptable IAQ, affecting the health and wellbeing of the occupants of these buildings. To this end, this study intends to investigate the effects of air permeability, background ventilation and occupants' lifestyles on the energy performance, indoor air quality and risk of

condensation in naturally ventilated domestic buildings. The ultimate aim is to determine the most efficient way to improve energy efficiency in buildings without sacrificing IAQ.

## 2. Methodology

Dynamic Thermal Simulations (DTS) were conducted in EnergyPlus to evaluate building performance. Combined Heat and Moisture Finite Element was considered as the heat balance algorithm in order to achieve more accurate results for simulating moisture and the risk of condensation. London Gatwick was considered for the weather data.

Simulations were conducted for the heating seasons from October to the end of March when occupants are less likely to open the windows/vents and there are therefore higher risks of condensation and poor IAQ. According to the findings of a study by Hashemi *et al.* [21] on some UK domestic buildings, bedrooms have a considerably poorer IAQ compared to other areas of the building. Therefore, for the purpose of this study, a 3 m × 3 m × 2.4 m (length × width × height) room with a 1 m × 1 m window and masonry insulated cavity walls was modelled as the representative of a double bedroom.

Two occupants were defined as the only sources of internal heat gain and CO<sub>2</sub> generation in the simulated zone. According to ASHRAE 55 [22] total heat gain of 120 W was assumed for seated and 72 W for sleeping occupants. The occupancy schedule was defined as fully occupied from 6 pm to 8 am during weekdays and 24 h during all other days. The bedrooms were supposed to be occupied for 8 h during working days and 9 h during all other days. An average heating set-point of 18 °C was considered during the occupied periods. This was specified based on the CIBSE Guide A [23] guidelines in which temperature of 17 °C–19 °C is suggested for bedrooms.

In total, 30 different scenarios were simulated for five airtightness rates (1, 3, 5, 7 and 10 m<sup>3</sup>/h.m<sup>2</sup>@50 Pa) with two Trickle Vents (TV) positions (permanently closed or open) and three different lifestyle conditions of (Dry, Moist and Wet). It should be noted that according to approved document L1A, the limiting air permeability in domestic buildings is 10 m<sup>3</sup>/h.m<sup>2</sup>@50 Pa [24]. CIBSE Technical Memoranda TM23: 2000 also recommends an air permeability of 5 m<sup>3</sup>/h.m<sup>2</sup>@50 Pa as the best practice for naturally ventilated dwellings [25]. For the purpose of background/whole building ventilation a TV of 5000 mm<sup>2</sup> was considered based on the approved document part F of the UK building regulations [26]. Background ventilation is necessary to maintain the minimum IAQ requirements in the building. The ventilation was supposed to be through infiltration and TV only and no obstructions such as curtains or blinds were considered.

Regarding moisture generation, three lifestyle categories of “Dry”, “Moist” and “Wet” occupancy conditions were modelled based on the guidelines provided in Annex B, Table B.3 of BS 5250 [27]. According to the provided guidelines, Dry, Moist and Wet occupancy conditions are defined as excess generated moisture of up to 0.3 kPa, 0.6 kPa and more than 0.6 kPa, respectively. For the Moist and Wet occupancy, internal humidity is higher than normal levels, while dry occupancy is representative of those conditions where occupants are out of the building during the daytime and generate lower amount of moisture. Therefore, for the purpose of simulations, excess vapour pressure values of 0.3 kPa, 0.6 kPa and 0.9 kPa were assumed as the Dry, Moist and Wet occupancy conditions, respectively. According to the BS 5250, the daily moisture generation of, for example, two occupants for Dry, Moist and Wet occupancy conditions are 4 kg, 8 kg and 11 kg, respectively. Since window surface temperatures are

usually lower than the rest of the building elements, risk of condensation and mould growth around windows is usually higher than in other areas of buildings. The total number of hours when there was a risk of condensation on the window are therefore reported.

Moreover, as suggested by BB101 [28] and BS EN 15251 [29], CO<sub>2</sub> concentration can be used as an indicator of IAQ in occupied spaces. High CO<sub>2</sub> levels in occupied zones is an indicator of unacceptable IAQ and insufficient ventilation. The indoor air quality was therefore investigated by reporting CO<sub>2</sub> concentration level during occupied periods. For this reason, frequency of the times when CO<sub>2</sub> levels were higher than 1000, 1500 and 5000 parts per million (ppm) are reported. The 1000 ppm value is the target value suggested by BS EN 15251:2007 [29] as the acceptable IAQ while 1500 ppm is the concentration value in which usually all the occupants show some symptom of sick building syndrome [30] and the 5000 ppm is the concentration value in which occupants' health can be affected [31].

In addition, the effects of the application of each of 30 scenarios on energy consumption were also studied and the total heating energy consumptions were reported. It should be noted that the reported heating energy is for the studied thermal zone only and the results should either be divided by the total area or the volume of the heated zone in order to achieve heating energy per square/cubic meters as a more appropriate indicator for comparison with other buildings. Table 1 summarises the conditions considered for the simulations.

**Table 1.** Summary of conditions/scenarios considered for the simulations.

Summary of Conditions					
<b>Simulation Conditions</b>	Simulation period: 6 Months (October-March)	Weather Data: London Gatwick	Heating Set-point: 18 °C	Occupancy pattern: 6 pm–8 am working days; Occupied all other times	Number of occupants: 2
<b>Construction</b>	Masonry cavity with insulated walls	External walls U-Value: 0.35 W/m <sup>2</sup> ·K	Window U-Value: 1.97 W/m <sup>2</sup> K	Room size: 3 m × 3 m × 2.4 m	-
<b>Boundary conditions</b>	Exposed: South wall; Roof	Ground: Floor	Adiabatic: North, East and West walls	Total exposed wall area: 7.2 m <sup>2</sup>	-
<b>Air Permeability Rates</b>	1 m <sup>3</sup> /h·m <sup>2</sup> @50 Pa	3 m <sup>3</sup> /h·m <sup>2</sup> @50 Pa	5 m <sup>3</sup> /h·m <sup>2</sup> @50 Pa	7 m <sup>3</sup> /h·m <sup>2</sup> @50 Pa	10 m <sup>3</sup> /h·m <sup>2</sup> @50 Pa
<b>Occupancy Conditions</b>	Dry: 0.3 Kpa excess vapour pressure	Moist: 0.6Kpa excess vapour pressure	Wet: 0.9 Kpa excess vapour pressure	-	-
<b>TV Conditions</b>	Open	Closed	Area: 5000 mm <sup>2</sup>	Position: South façade	Discharge coefficient: 0.65
<b>Simulation Outputs</b>	CO <sub>2</sub> : 1000 ppm, 1500 ppm, 5000 ppm	Risk of Condensation (h)	Energy Consumption (KW)	-	-

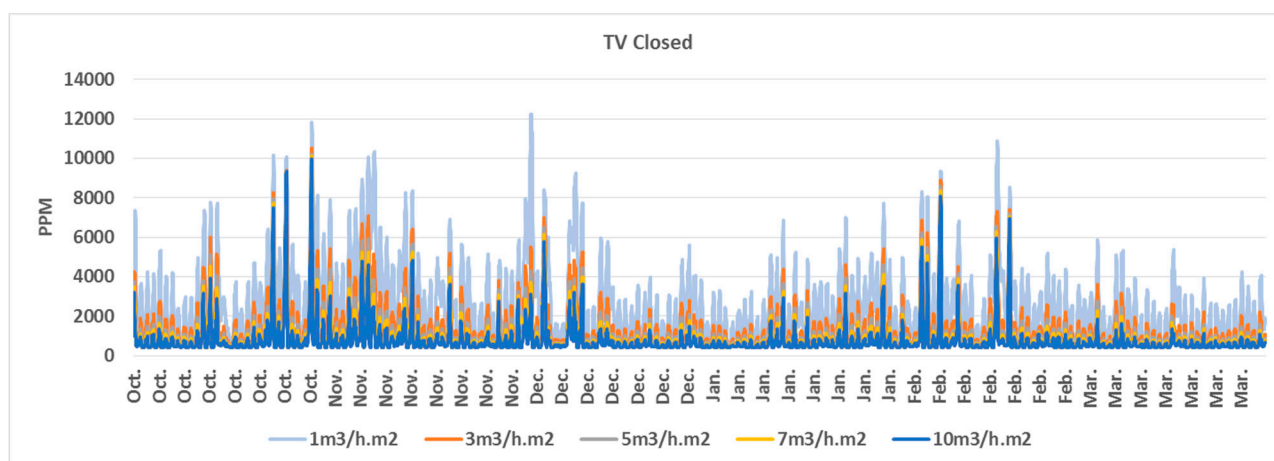
### 3. Results

#### 3.1. Indoor Air Quality

The results of simulations were evaluated for different airtightness values for the TV open and closed conditions. According to the results for the air permeability of 1 m<sup>3</sup>/h·m<sup>2</sup>@50 Pa when the TV was closed, CO<sub>2</sub> concentration levels were above 1000 ppm, 1500 ppm and 5000 ppm for 85%, 69% and 10% of all occupied periods, respectively. The IAQ improved considerably when the TV was opened,

reducing the above figures to 54%, 31% and 1.5% of the entire occupied periods. Opening the TV helped to reduce risk of poor IAQ by 85% reflecting the period of time when CO<sub>2</sub> level was higher than 5000 ppm.

For the 3 m<sup>3</sup>/h.m<sup>2</sup>@50 Pa air permeability, the results indicated considerable reduction to around 31% during which CO<sub>2</sub> was above 1500 ppm. However CO<sub>2</sub> remained above 1000 ppm in 54% of the occupied periods. The IAQ continued to improve for all other air permeability values. For the air permeability of 10 m<sup>3</sup>/h.m<sup>2</sup>@50 Pa, CO<sub>2</sub> concentration was respectively in 8.3% and 1% of the times above 1500 ppm and 5000 ppm. This means 79%, 88% and 90% improvements in the CO<sub>2</sub> concentration for 1000, 1500 and 5000 ppm compared to 1 m<sup>3</sup>/h.m<sup>2</sup>@50 Pa. Figure 1 and Table 2 summarise the results of simulations for different air permeability values when the TV was closed.



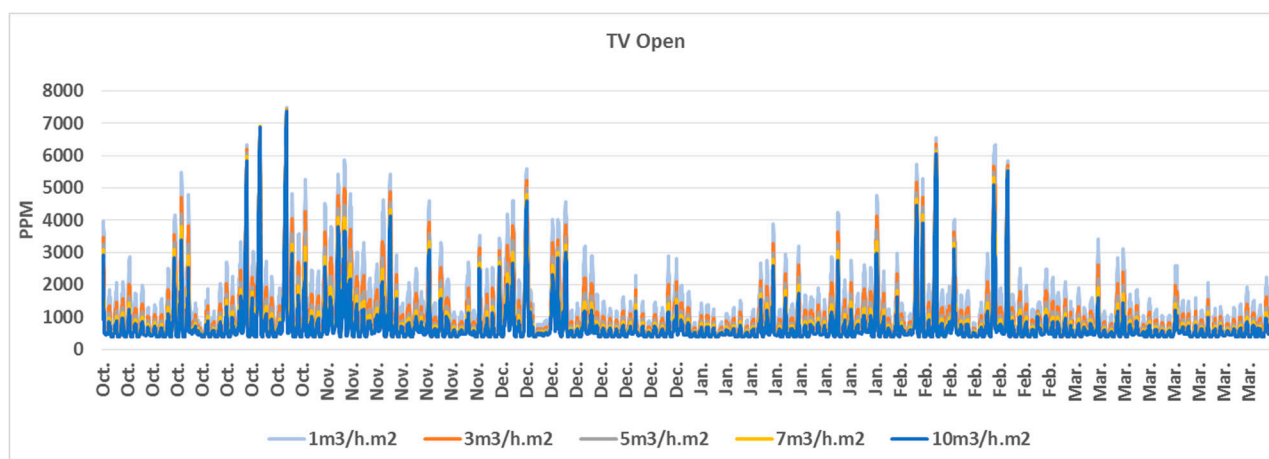
**Figure 1.** CO<sub>2</sub> concentration values for different air permeability rates Oct.–Mar. (TV Closed).

**Table 2.** Percentage of occupied time when CO<sub>2</sub> concentration was above, 1000, 1500 and 5000 ppm (TV Closed).

Air Permeability					
Values (TV Closed)	1m <sup>3</sup> /h.m <sup>2</sup> @ 50 Pa	3m <sup>3</sup> /h.m <sup>2</sup> @ 50 Pa	5m <sup>3</sup> /h.m <sup>2</sup> @ 50 Pa	7m <sup>3</sup> /h.m <sup>2</sup> @ 50 Pa	10m <sup>3</sup> /h.m <sup>2</sup> @ 50 Pa
<b>CO<sub>2</sub> Concentration</b>					
1000 ppm	85.3%	54.3%	36.3%	25.8%	17.8%
1500 ppm	69.6%	31.3%	17.7%	12.0%	8.3%
5000 ppm	10.3%	2.3%	1.5%	1.3%	1.0%

Opening the TV also significantly improved the IAQ. The best conditions in terms of IAQ was, as expected, achieved for the air permeability of 10 m<sup>3</sup>/h.m<sup>2</sup>@50 Pa. For this condition, CO<sub>2</sub> concentration was above 1000 ppm and 1500 ppm for 14.5% and 6.8% of the occupied periods, respectively. The CO<sub>2</sub> concentration was above 5000 ppm for 0.6% of the times. This implies a 73%, 78% and 60% improvement in the CO<sub>2</sub> concentration over the 1 m<sup>3</sup>/h.m<sup>2</sup>@50 Pa air permeability case for 1000, 1500 and 5000 ppm, respectively. Figure 2 and Table 3 summarise the results of simulations for different air permeability values when TV was open.

According to the results, increasing the air permeability by 2 m<sup>3</sup>/h.m<sup>2</sup>@50 Pa and/or opening the TV had almost identical effects on the CO<sub>2</sub> concentration values. For instance a 3 m<sup>3</sup>/h.m<sup>2</sup>@50 Pa air permeability with open TV would result in almost the same CO<sub>2</sub> concentration levels for the air permeability of 5 m<sup>3</sup>/h.m<sup>2</sup>@50 Pa with closed TV.



**Figure 2.** CO<sub>2</sub> concentration values for different air permeability rates Oct.-Mar. (TV Open).

**Table 3.** Percentage of occupied time when CO<sub>2</sub> concentration was above, 1000, 1500 and 5000 ppm (TV Open).

Air Permeability	1 m <sup>3</sup> /h.m <sup>2</sup> @ 50 Pa	3 m <sup>3</sup> /h.m <sup>2</sup> @ 50 Pa	5 m <sup>3</sup> /h.m <sup>2</sup> @ 50 Pa	7 m <sup>3</sup> /h.m <sup>2</sup> @ 50 Pa	10 m <sup>3</sup> /h.m <sup>2</sup> @ 50 Pa
Values (TV Open)					
CO <sub>2</sub> Concentration					
1000 ppm	54.3%	36.7%	25.8%	19.4%	14.5%
1500 ppm	31.1%	17.5%	11.7%	8.7%	6.8%
5000 ppm	1.5%	1.0%	0.7%	0.6%	0.6%

### 3.2. Risk of Condensation

This section evaluates the effects of different occupancy conditions/lifestyles (“Dry”, “Moist” and “Wet” occupancy) on the risk of condensation. The results show strong relations between the risk of condensation and lifestyle as an indicator of generated moisture by the occupants during the day. According to the results, there is a very high risk of condensation for all Wet occupancy conditions regardless of the air permeability and/or the position of the TV. The situation moderately improved for the Moist and considerably improved for the Dry occupancy conditions. Tables 4 and 5 summarise the risk of condensation for different air permeability values and lifestyle conditions with and without TV.

The risk of condensation was negligible for almost all Dry occupancy conditions except for the 1 m<sup>3</sup>/h.m<sup>2</sup>@50 Pa air permeability during October when 159 h of condensation was observed when the TV was closed. Higher air permeability did not generally improve the situation although it greatly improved the conditions in October for the 1 m<sup>3</sup>/h.m<sup>2</sup>@50 Pa air permeability. Similar effects were observed for the rest of airtightness rates when the TV was opened. The results also indicate that, apart from October, opening the TV did not improve the conditions, and marginally deteriorated the situations resulting in slightly higher risk of condensation. A possible explanation for this may be that opening the TV would reduce the surface temperature of the window and surrounding walls resulting in higher risk of condensation. More research is required in this respect.

Natural and background ventilation due to the higher air permeability and/or through TVs, seem to be adequate for the dry occupancy conditions only. Wet occupancy conditions increased the risk of condensation by up to 2.7 times compared to the Moist conditions. Yet, none of the Moist and Wet

occupancy conditions achieved desirable results as very high risk of condensation was observed for these conditions compared to the Dry occupancy condition. Either mechanical or purge ventilation through windows/vents may be required to mitigate the risk of condensation in these conditions.

**Table 4.** Number of hours when there was a risk of condensation for different air permeability rates and occupancy conditions (TV Closed).

TV Closed	1 m <sup>3</sup> /h.m <sup>2</sup> @ 50 Pa	3 m <sup>3</sup> /h.m <sup>2</sup> @ 50 Pa	5 m <sup>3</sup> /h.m <sup>2</sup> @ 50 Pa	7 m <sup>3</sup> /h.m <sup>2</sup> @ 50 Pa	10 m <sup>3</sup> /h.m <sup>2</sup> @ 50 Pa
<b>Dry Occupancy</b>					
October	159.1	5.7	0.0	0.0	0.0
November	40.2	0.0	0.1	0.1	0.3
December	9.2	3.1	3.5	4.0	5.2
January	0.4	0.9	1.5	2.2	3.5
February	3.2	6.5	8.6	9.9	11.9
March	0.2	0.4	0.8	1.3	1.7
Total (Hours)	212.3	16.6	14.5	17.5	22.6
<b>Moist Occupancy</b>					
October	161.4	21.8	12.6	18.5	24.0
November	71.4	80.4	105.6	117.8	125.6
December	211.9	222.5	229.9	235.6	241.3
January	286.3	323.8	331.6	335.1	338.7
February	232.8	250.0	264.5	271.3	277.1
March	72.6	117.6	139.3	149.7	161.4
Total (Hours)	1036.4	1016.1	1083.5	1128	1168.1
<b>Wet Occupancy</b>					
October	206.9	133.8	185.7	224.3	257.1
November	305.7	357.7	393.3	411.8	422.1
December	634.2	593.7	569.1	558.4	546.2
January	613.7	580.2	561.9	549.2	524.4
February	556.2	517.9	506.6	489.7	478.9
March	479.2	477.7	474.0	472.2	470.5
Total (Hours)	2795.9	2661	2690.6	2705.6	2699.2

**Table 5.** Number of hours when there was a risk of condensation for different air permeability rates and occupancy conditions (TV Open).

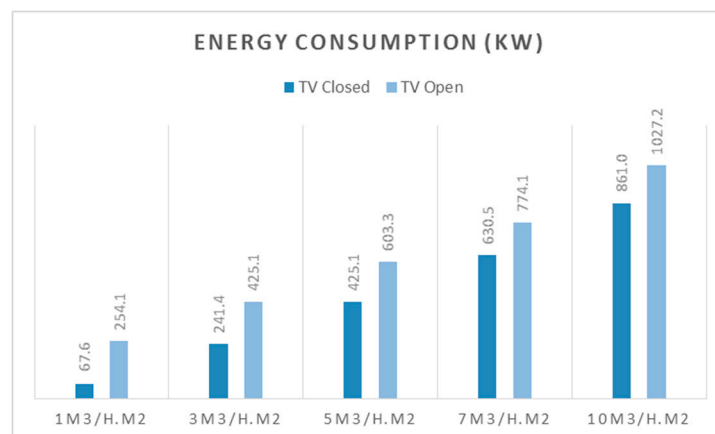
TV Open	1 m <sup>3</sup> /h.m <sup>2</sup> @ 50 Pa	3 m <sup>3</sup> /h.m <sup>2</sup> @ 50 Pa	5 m <sup>3</sup> /h.m <sup>2</sup> @ 50 Pa	7 m <sup>3</sup> /h.m <sup>2</sup> @ 50 Pa	10 m <sup>3</sup> /h.m <sup>2</sup> @ 50 Pa
<b>Dry Occupancy</b>					
October	3.5	0.0	0.0	0.0	0.0
November	0.0	0.1	0.1	0.3	0.5
December	2.4	3.3	4.2	5.0	6.1
January	0.9	1.5	2.2	3.1	4.1
February	6.5	8.5	9.9	11.4	13.0
March	0.3	0.8	1.4	1.6	1.9
Total (Hours)	13.6	14.2	17.8	21.4	25.6

Table 5. Cont.

TV Open	1 m <sup>3</sup> /h.m <sup>2</sup> @ 50 Pa	3 m <sup>3</sup> /h.m <sup>2</sup> @ 50 Pa	5 m <sup>3</sup> /h.m <sup>2</sup> @ 50 Pa	7 m <sup>3</sup> /h.m <sup>2</sup> @ 50 Pa	10 m <sup>3</sup> /h.m <sup>2</sup> @ 50 Pa
<b>Moist Occupancy</b>					
October	12.0	11.4	14.3	18.5	22.6
November	78.8	104.4	117.5	122.9	129.3
December	221.4	230.1	234.9	240.2	243.8
January	324.8	331.7	335.3	337.7	340.0
February	250.1	264.1	270.6	275.0	279.8
March	115.5	138.6	150.0	158.1	166.6
Total (Hours)	1002.6	1080.3	1122.6	1152.4	1182.1
<b>Wet Occupancy</b>					
October	133.7	187.1	225.9	248.5	271.3
November	356.4	395.3	412.4	419.8	427.4
December	597.6	570.4	559.0	551.8	543.0
January	580.3	562.4	549.2	533.0	514.3
February	518.1	506.9	489.9	481.9	474.4
March	476.9	474.0	472.0	471.2	469.5
Total (Hours)	2663	2696.1	2708.4	2706.2	2699.9

### 3.3. Energy Consumption

Energy consumption was also investigated for all of the scenarios. The results of the simulations reveal direct relations between energy consumption and ventilation rates in general, and air permeability and background ventilation in particular. According to the results, energy consumption during heating seasons increased by around thirteen times (from 7.5 kW/m<sup>2</sup> to 96.6 kW/m<sup>2</sup>) for the closed TV condition when the air permeability increased from 1 to 10 m<sup>3</sup>/h.m<sup>2</sup>@50 Pa (such an increase in energy consumption may not occur in real world conditions). For the open TV, energy consumption increased by around four times. It should be noted that the background ventilation is necessary to achieve acceptable IAQ in airtight buildings, and therefore, this fourfold increase in energy consumption may be a better reflection of the real world conditions. Figure 3 summarises the energy performance of the building from October to March for different air permeability ranges when the TV was open or closed.



**Figure 3.** Total energy consumption between October and March for different air permeability rates when TV was open or closed.



Tables 6 and 7 also compare the relative increases in energy consumption for different scenarios during the heating seasons. According to the results of simulations for the TV open conditions, increasing air permeability by  $2 \text{ m}^3/\text{h.m}^2@50 \text{ Pa}$  could increase the energy consumptions between 29%–42%. In scenarios where TV was closed, this figure was between 37%–76% excluding the  $1 \text{ m}^3/\text{h.m}^2@50 \text{ Pa}$  air permeability (where there results are unrealistically low). The energy consumption increased by 2.4 times when comparing  $3 \text{ m}^3/\text{h.m}^2@50 \text{ Pa}$  with  $10 \text{ m}^3/\text{h.m}^2@50 \text{ Pa}$  for the TV open conditions. This figure was around 4 times when comparing  $1 \text{ m}^3/\text{h.m}^2@50 \text{ Pa}$  with  $10 \text{ m}^3/\text{h.m}^2@50 \text{ Pa}$ . The energy consumption increased by 3.6 times when comparing  $3 \text{ m}^3/\text{h.m}^2@50 \text{ Pa}$  with  $10 \text{ m}^3/\text{h.m}^2@50 \text{ Pa}$  for the TV closed conditions.

**Table 6.** Total energy consumption for different air permeability rates (TV Closed).

Air Permeability Values (TV Closed)	$1 \text{ m}^3/\text{h.m}^2@50 \text{ Pa}$	$3 \text{ m}^3/\text{h.m}^2@50 \text{ Pa}$	$5 \text{ m}^3/\text{h.m}^2@50 \text{ Pa}$	$7 \text{ m}^3/\text{h.m}^2@50 \text{ Pa}$	$10 \text{ m}^3/\text{h.m}^2@50 \text{ Pa}$
<b>Energy Consumption</b>					
Annual (KW)	68.9	265.2	493.6	713.8	1044.2
Heating Seasons (KW)	67.6	241.4	425.1	630.5	861.0
Relative Increase %	100.0%	357.3%	629.2%	933.2%	1274.3%
Relative Increase Compared to the previous %	N/A	100%	176.1%	148.3%	136.6%

**Table 7.** Total energy consumption for different air permeability rates (TV Open).

Air Permeability Values (TV Open)	$1 \text{ m}^3/\text{h.m}^2@50 \text{ Pa}$	$3 \text{ m}^3/\text{h.m}^2@50 \text{ Pa}$	$5 \text{ m}^3/\text{h.m}^2@50 \text{ Pa}$	$7 \text{ m}^3/\text{h.m}^2@50 \text{ Pa}$	$10 \text{ m}^3/\text{h.m}^2@50 \text{ Pa}$
<b>Energy Consumption</b>					
Annual (KW)	269.2	495.0	718.6	934.0	1249.9
Heating Seasons (KW)	254.1	425.1	603.3	774.1	1027.2
Relative Increase %	100.0%	167.3%	237.4%	304.7%	404.3%
Relative Increase Compared to the previous %	N/A	100%	141.9%	128.5%	132.7%

#### 4. Conclusions

Improving the energy performance of new and existing buildings has been one of the major priorities of the UK Government during the recent years. National schemes such as the Green Deal and Warm Front intend to improve energy efficiency of buildings through better insulation and reduced air permeability. However, improving building energy performance without considering its effects on the other factors such as indoor air quality may negatively affect the health and wellbeing of the occupants. This paper demonstrated the effects of different air permeability rates and background ventilation on the energy performance, indoor air quality (IAQ) and risk of condensation in domestic buildings.

The results of this study reveal invers relations between energy performance and indoor air quality/ventilation rates in buildings. Higher ventilation rates by means of infiltration and/or background ventilation through, for example, Trickle Vents (TV) significantly decreased the risk of unacceptable IAQ; however, they increased the energy consumption by up to 4 times. Although very low air permeability rates significantly reduce energy consumption, they may not be capable of providing

acceptable IAQ if they rely on background ventilation alone. Larger ventilation areas and/or mechanical ventilation may therefore be required to achieve acceptable indoor air quality in airtight buildings.

The results of this study also reveal that occupants' behaviours/occupancy conditions are important factors in mitigating or increasing the risk of condensation in naturally ventilated buildings. Risk of condensation increased by up to 2.7 times for Wet occupancy conditions compared to Moist occupancy. Nevertheless, neither higher air permeability nor background ventilation through TVs are effective in controlling condensation in buildings with Moist and/or Wet occupancy conditions. However, for the Dry occupancy conditions, where the excess vapour pressure is not more than 0.3 kPa of the internal vapour pressure, all air permeability rates along with the background ventilation through TVs can achieve acceptable results in terms of the risk of condensation. For higher moisture generation rates, purge or mechanical ventilation may be required to effectively remove the excess moisture at the source. This said, it should be noted that other factors such as poor ventilation, design and detailing can also contribute to high risks of condensation, damp and mould growth in new and refurbished buildings.

Based on the results of this study, it could be argued that for naturally ventilated homes with Dry occupancy conditions, an air permeability of  $3 \text{ m}^3/\text{h}\cdot\text{m}^2@50 \text{ Pa}$  could achieve optimum results in terms of energy consumption and IAQ if adequate background ventilation is provided to achieve acceptable indoor air quality (e.g.,  $\text{CO}_2$  concentrations less than 1% of the occupied times above 5000 ppm). For the buildings where TV or other means of background ventilation is not provided, a minimum air permeability of  $10 \text{ m}^3/\text{h}\cdot\text{m}^2@50 \text{ Pa}$  is recommended to achieve acceptable IAQ. It should be noted that these figures may apply to households with a maximum of two occupants. For bigger households, higher air permeability rates and/or background ventilation may be required to achieve acceptable results.

Providing more airtight buildings along with controllable background ventilation may improve occupants' perceived thermal comfort by giving them more control over their environments. However as people are usually unaware of  $\text{CO}_2$  levels in the environment, [32] they may keep the TVs closed which may in turn increase the risk of poor indoor air quality particularly during colder seasons when occupants are less likely to open the windows/vents. Moreover, in view of the high costs of achieving airtight buildings, as far as energy performance and IAQ are concerned, it may be more economical to consider higher air permeability rates instead of increasing airtightness along with more background ventilation to achieve acceptable IAQ in naturally ventilated buildings.

In summary, the results of this study show that increasing airtightness may escalate the risk of poor IAQ by reducing the rate of ventilation; however, this relation was not as evident for the risks of condensation. The latter requires more investigation. The current building regulations and standards are less concerned about the IAQ in general and generated moisture in particular (as the most critical pollutant in domestic buildings [33,34]). It is therefore recommended to include detailed  $\text{CO}_2$  and moisture control strategies/requirements in the building regulations and standards, as well as in the national energy efficiency schemes, not only to improve the energy performance of buildings but also to improve the health and wellbeing of the occupants of new and refurbished buildings. It is also recommended to refurbish buildings by carefully considering their current performance and evaluating the effects of refurbishment strategies on their future performance in terms of changes in risks of condensation and poor IAQ. Moreover, it should be noted that people's behaviours and lifestyles may not change as quickly as the building regulations are. Any modifications in the building regulations and

standards should therefore take into account the effects of occupancy conditions and occupants' behaviours in order to avoid negatively affecting their health and wellbeing.

### Author Contributions

The authors contributed equally to this work.

### Conflicts of Interest

The authors declare no conflict of interest.

### References

1. EST. *Energy-Efficient Refurbishment of Existing Housing*; Energy Saving Trust: London, UK, 2007.
2. BRE. *Energy Use in Homes: A Series of Reports on Domestic Energy Use in England. Energy Summary Report*; Building Research Establishment: Watford, UK, 2005.
3. English Heritage. *Energy Efficiency and Historic Buildings, Application of Part L of the Building Regulations to Historic and Traditionally Constructed Buildings*; English Heritage: Birmingham, UK, 2012.
4. DECC. *Energy Consumption in the UK (2013)*; Department for Energy and Climate Change: London, UK, 2013.
5. DECC. *Climate Act Impact 2008 Assessment*; Department of Energy & Climate Change: London, UK, 2009.
6. TSB. *Retrofit Revealed, The Retrofit for the Future Projects—Data Analysis Report*; Technology Strategy Board: Swindon, UK, 2013.
7. Department of Energy and Climate Change (DECC). *Annual Fuel Poverty Statistics Reports*; DECC: London, UK, 2014.
8. Department of Energy and Climate Change (DECC). *The Green Deal: A Summary of the Government's Proposals*; DECC: London, UK, 2010.
9. Hong, S.H.; Ridley, I.; Oreszczyn, T. The impact of energy efficient refurbishment on the airtightness in English dwellings. In Proceedings of the 25th AIVC Conference "Ventilation and retrofitting", Prague, Czech Republic, 15–17 September 2004.
10. Xing, Y.; Hewitt, N.; Griffiths, P. Zero carbon buildings refurbishment—A Hierarchical pathway. *Renew. Sustain. Energy Rev.* **2011**, *15*, 3229–3236.
11. Bakó-Biró, Z.; Clements-Croome, D.J.; Kochhar, N.; Awbi, H.B.; Williams, M.J. Ventilation rates in schools and pupils' performance. *Build. Environ.* **2012**, *48*, 215–223.
12. Seppanen, O.; Fisk, W.J.; Lei, Q.H. Ventilation and performance in office work. *Indoor Air* **2005**, *6*, 28–36.
13. The Scottish Government. *Technical Handbook—Domestic*; The Scottish Government: Scotland, UK, 2013.

14. Staepels, L.; Verbeeck G.; Roels S.; van Gelder L.; Bauwens G. Do Ventilation Systems Accomplish the Necessary Indoor Air Quality in Low Energy Houses? In Proceedings of the 11th REHVA World Congress & 8th International Conference on IAQVEC, Prague, Czech Republic, 16–19 June 2013.
15. Hobday, R.A. *Indoor Environmental Quality in Refurbishment. Historic Scotland Research Report 12*; Historic Scotland: Edinburgh, Scotland, UK, 2011.
16. Boulanger, X.; Mouradian, L.; Pele, C.; Pamart, P.; Bernard, N. Lessons learned on ventilation systems from the IAQ calculations on tight energy performant buildings. In *Optimising Ventilative Cooling and Airtightness for [Nearly] Zero-Energy Buildings, IAQ and Comfort*, Proceedings of the 33rd Air Infiltration and Ventilation Centre, Copenhagen, Denmark, 11 October 2012.
17. Elsharkawy, H.; Rutherford, P. Retrofitting social housing in the UK: Home energy use and performance in a pre-Community Energy Saving Programme (CESP). *Energy Build.* **2015**, *88*, 25–33.
18. Department for Communities and Local Government (DCLG). *Code for Sustainable Homes, Impact Assessment*; DCLG: London, UK, 2009.
19. Laverge, J.; van den Bossche, N.; Heijmans, N.; Janssens, A. Energy saving potential and repercussions on indoor air quality of demand controlled residential ventilation strategies. *Build. Environ.* **2011**, *46*, 1497–1503.
20. Wing, N.H.; Huang, B. Comparative study of the indoor air quality of naturally ventilated and air-conditioned bedrooms of residential buildings in Singapore. *Build. Environ.* **2004**, *39*, 1115–1123.
21. Hashemi, A.; Liyanage, C.; Hadjri, K.; Khatami, N. Assessing the risks of dampness and mould growth in renovated properties. In Proceedings of the ZEMCH2014 International Conference: Mass Customisation and Sustainability in Housing, Londrina, Brazil, 4–6 June 2014.
22. ASHRAE. *Thermal Environmental Conditions for Human Occupancy*; American Society of Heating, Refrigerating, and Air-Conditioning Engineers (ASHRAE): Atlanta, GA, USA, 2004.
23. Chartered Institution of Building Services Engineers (CIBSE). *Guide A: Environmental Design*; CIBSE: London, UK, 2006.
24. HM Government. *The Building Regulations 2010 (ed 2013), Approved Document L1 A, Conservation of Fuel and Power in New Dwellings*; HM Government: London, UK, 2013.
25. CIBSE. *Technical Memoranda TM23: Testing Buildings for air Leakage*; Chartered Institution of Building Services Engineers (CIBSE): London, UK, 2000.
26. HM Government. *The Building Regulations 2010, Approved document F. Ventilation*; HM Government: London, UK, 2010.
27. BSI. Code of Practice for Control of Condensation in Buildings. In *BS EN 5250:2002*; British Standards Institute: London, UK, 2002.
28. DFE. *Ventilation of School Buildings: Regulations, Standards Design Guidance. Building Bulletin 101*; Department for Education and Employment: London, UK, 2006.
29. BSI. Indoor environmental input parameters for design and assessment of energy performance of buildings addressing indoor air quality, thermal environment, lighting and acoustics. In *BS EN 15251:2007*; British Standards: London, UK, 2007.
30. Petty, S.E. *Forensic Engineering: Damage Assessments for Residential and Commercial Structures*; Taylor & Francis: Boca Raton, FL, USA, 2013.

31. Emmerich, S.J.; Persily, A.K. *State-of-the-Art Review of CO<sub>2</sub> Demand Controlled Ventilation Technology and Application*; National Technical Information Service (NTIS): Springfield, IL, USA, 2001.
32. Khatami, N.; Cook, M.J.; Hudleston, N. Opportunities for Improving Environmental Performance of Retrofitted Lightweight Offices in Temperate Climates. In Proceedings of the ROOMVENT 2011: The 12th International Conference on Air Distribution in room, Trondheim, Norway, 19–22 June 2011.
33. EST. *Improving Airtightness in Dwellings*; Energy Saving Trust: London, UK, 2005.
34. EST. *Energy Efficient Ventilation in Dwellings—A Guide for Specifiers*: GPG268; Energy Saving Trust: London, UK, 2006.

© 2015 by the authors; licensee MDPI, Basel, Switzerland. This article is an open access article distributed under the terms and conditions of the Creative Commons Attribution license (<http://creativecommons.org/licenses/by/4.0/>).