

Table S1 Relationship between AMO/PDO and SPEI

	AMO	PDO
Pearson's r	-0.389*	0.307

Note: * is significant at 0.05.

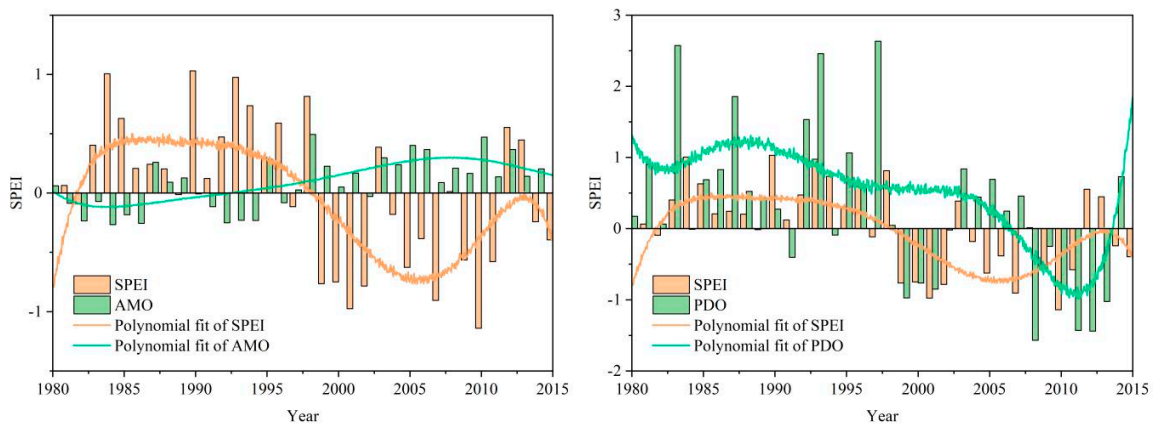


Figure S1 Polynomial fit of SPEI and AMO/PDO

Table S2. Drought at different levels detected by percentage of stations (1980-1999 vs. 2000-2012)

Years	Mild drought	Moderate drought	Severe drought	Extreme drought
1980-1999	18.54%	14.79%	4.55%	0.51%
2000-2012	13.72%	10.87%	3.40%	0.10%

(Tong et al., 2019)

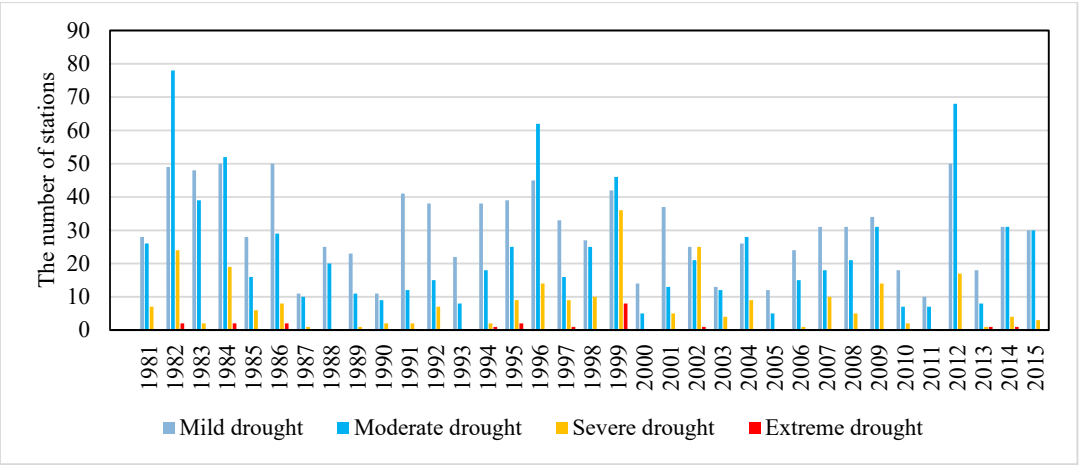


Figure S2. Drought at different levels detected by percentage of stations (1980-1999 vs. 2000-2012)