

Supplemental Material: Brevisulcenals-A1 and A2, Sulfate Esters of Brevisulcenals, Isolated from the Red Tide Dinoflagellate *Karenia brevisulcata*

Masayuki Satake, Raku Irie, Patrick T. Holland, D Tim Harwood, Feng Shi, Yoshiyuki Itoh, Fumiaki Hayashi and Huiping Zhang

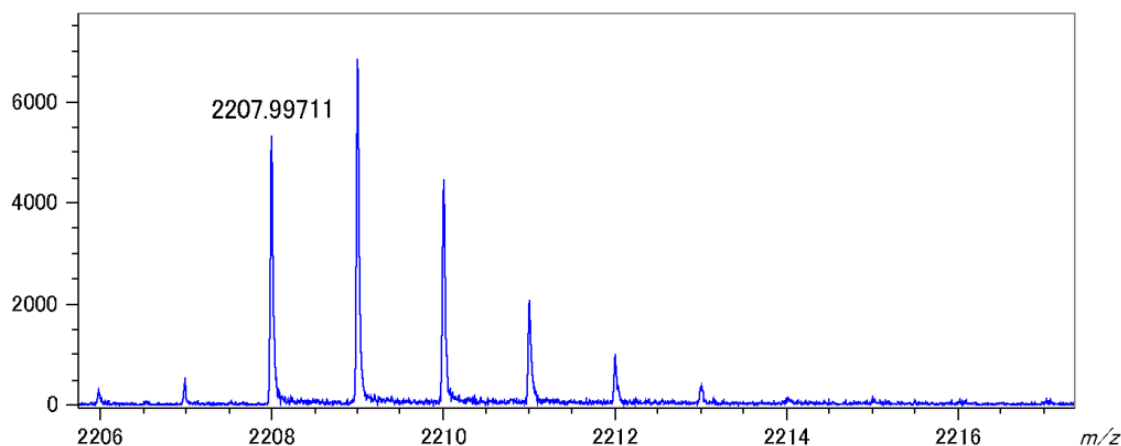


Figure S1. Spiral MALDI MS of KBT-A2.

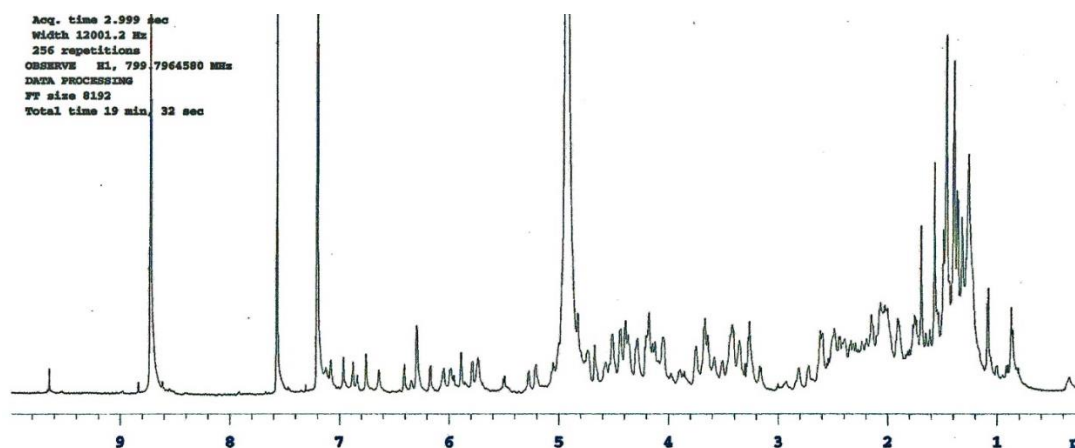


Figure S2. ¹H NMR spectrum of KBT-A2 (800 MHz, pyridine-*d*₅).

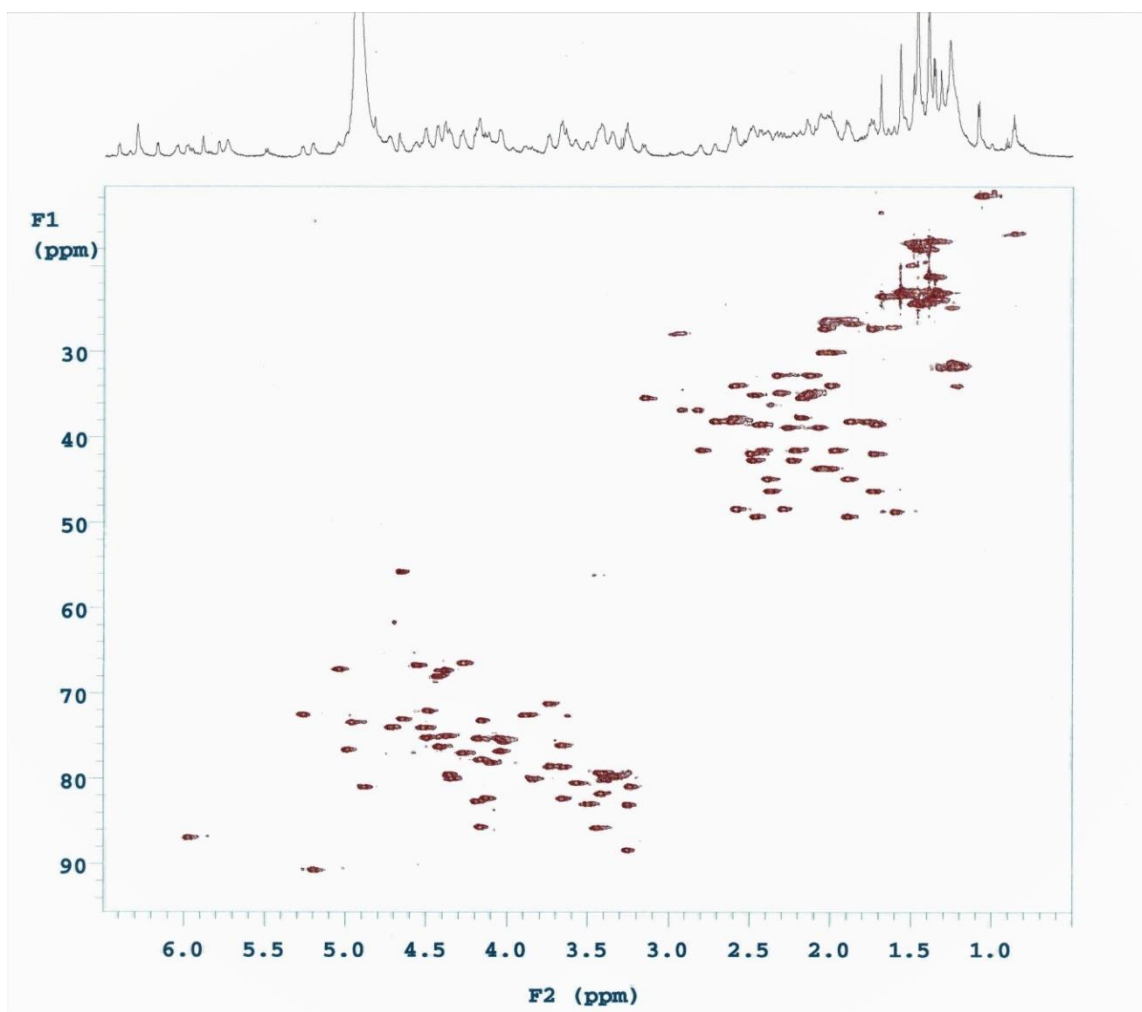


Figure S3. HSQC of KBT-A2 (800 MHz, pyridine-*d*₅).

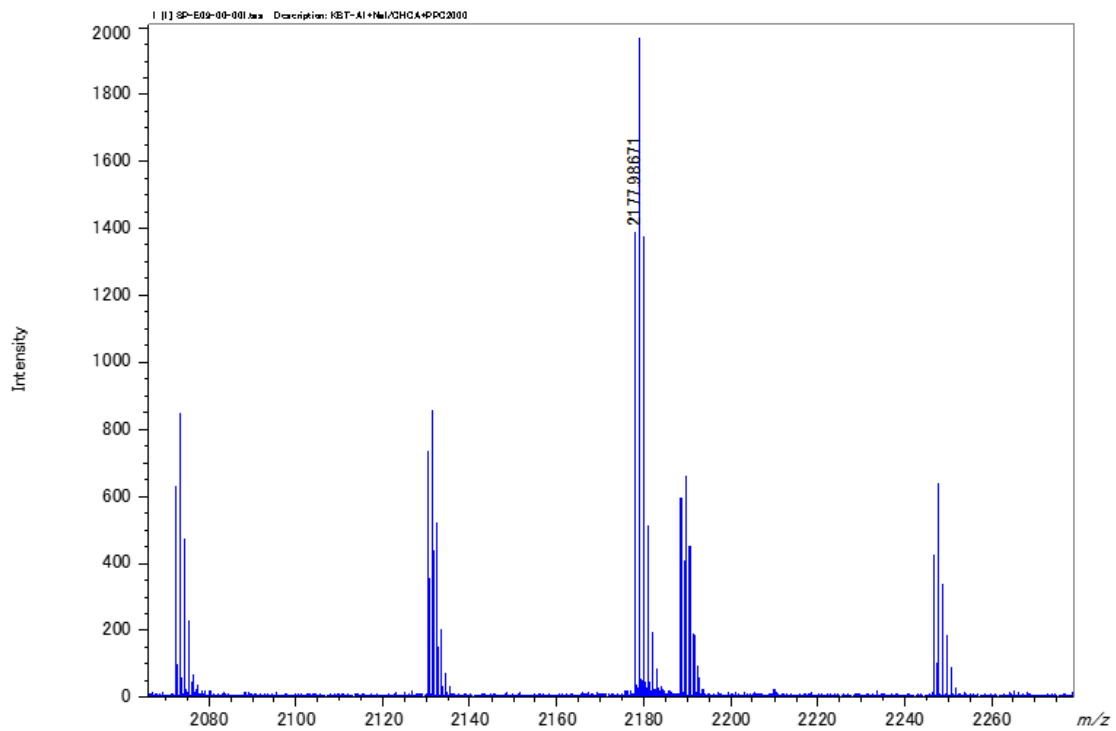


Figure S4. Spiral MALDI MS of KBT-A1.

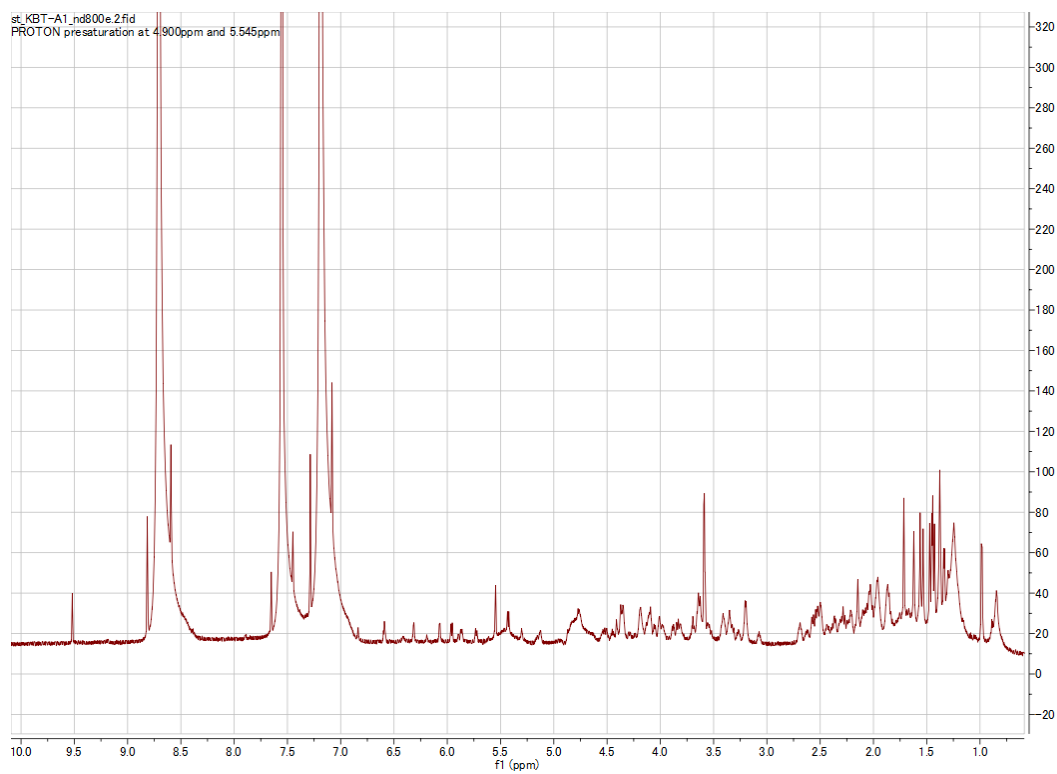


Figure S5. ¹H NMR spectrum of KBT-A1 (800 MHz, pyridine-*d*₅).

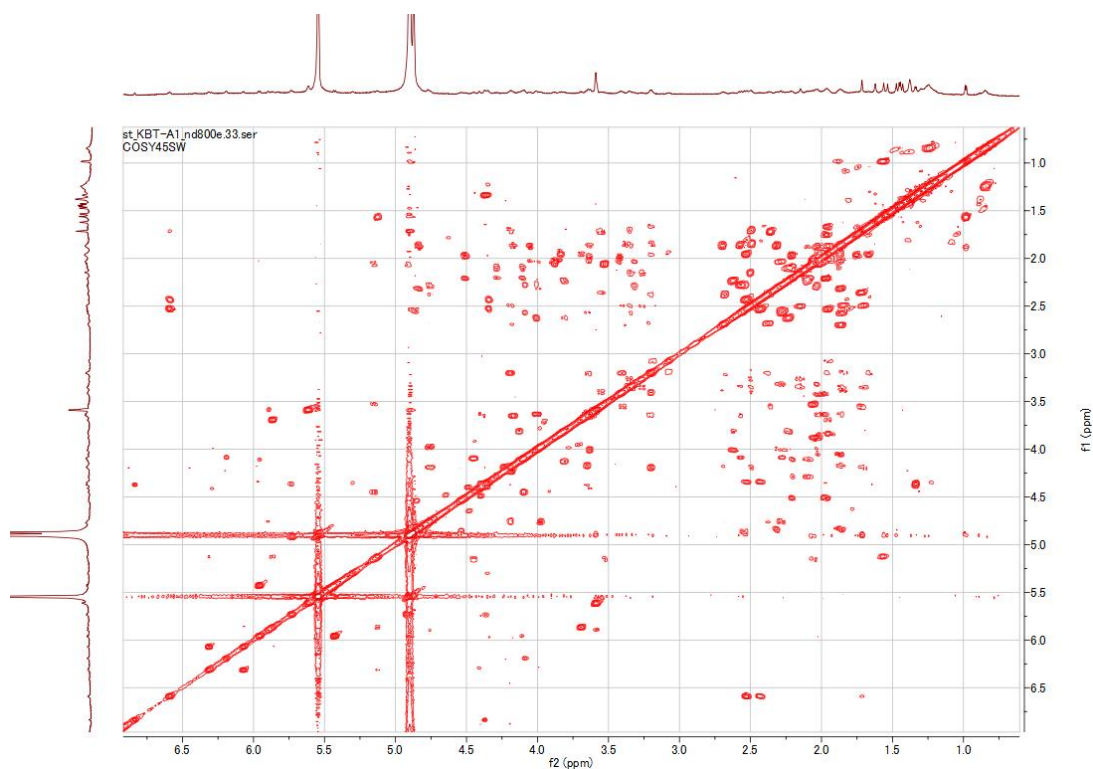


Figure S6. ^1H - ^1H COSY of KBT-A1 (800 MHz, pyridine- d_5).

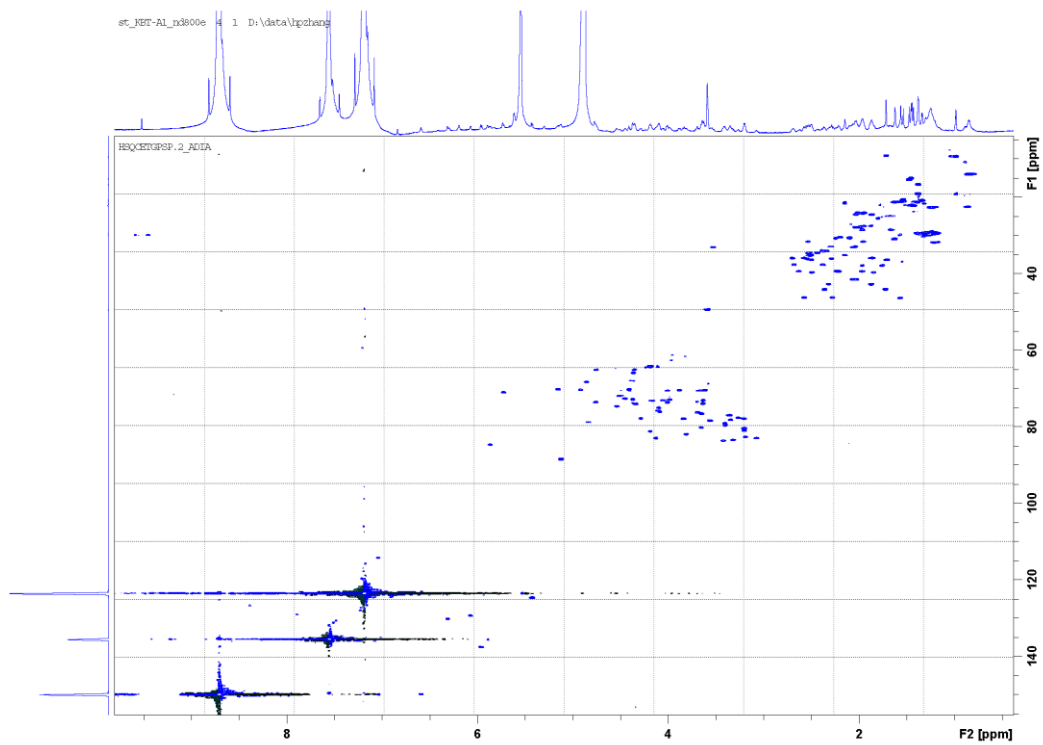


Figure S7. HSQC of KBT-A1 (800 MHz, pyridine- d_5).

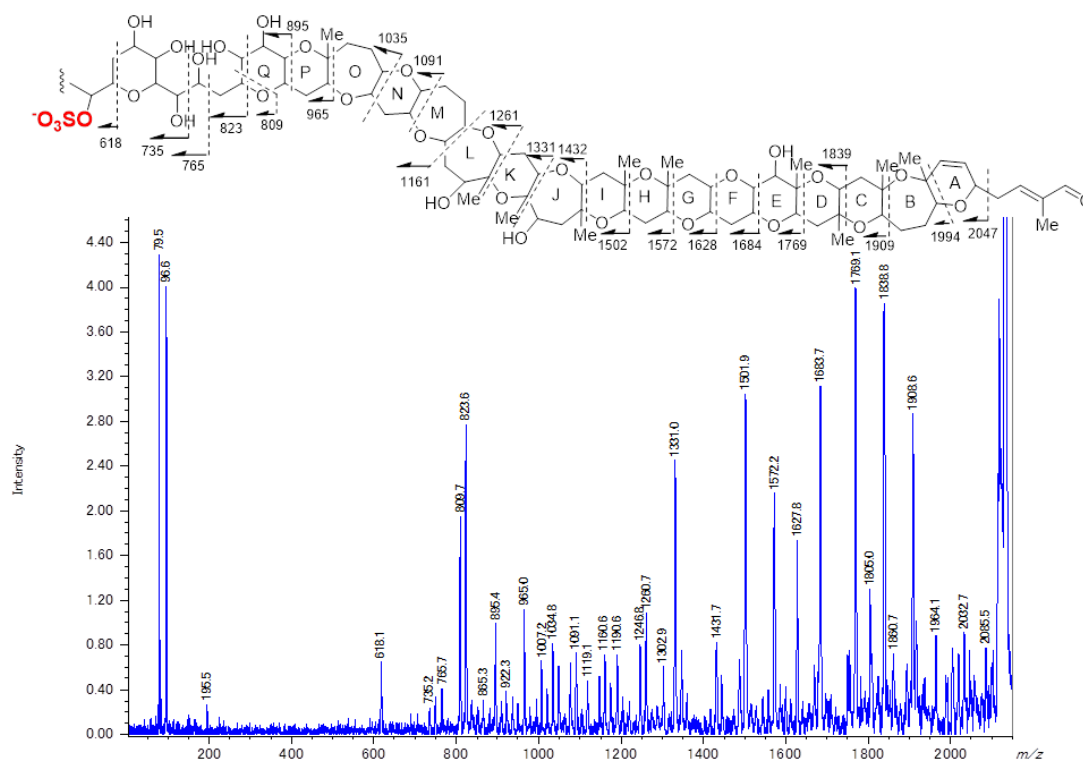


Figure S8. Spiral MLADI TOF-TOF of KBT-A1.

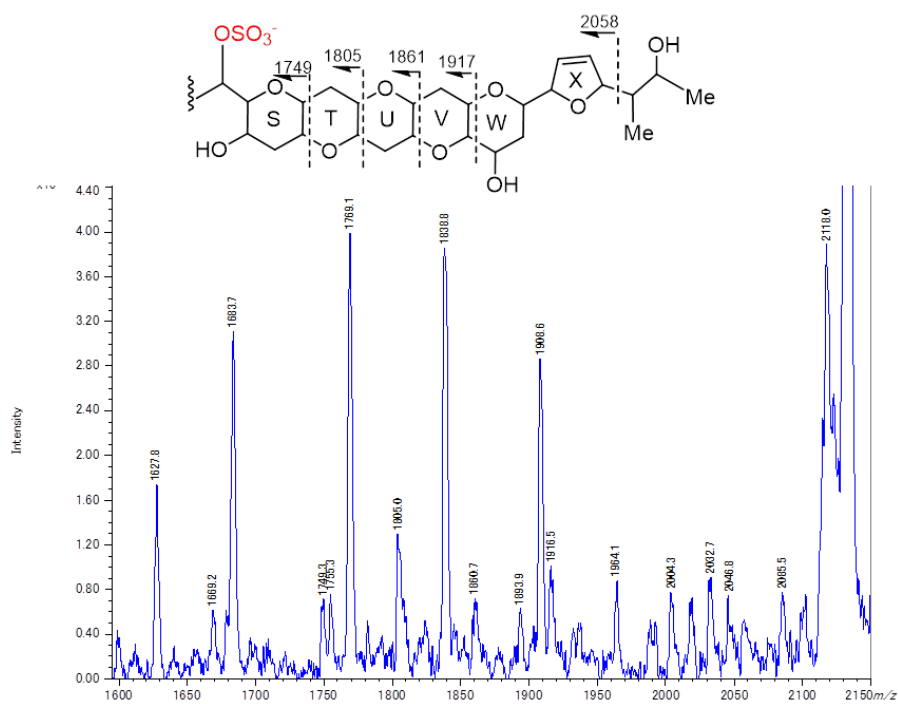


Figure S9. Spiral MALDI TOF-TOF of KBT-A1 (m/z 1600–2150).