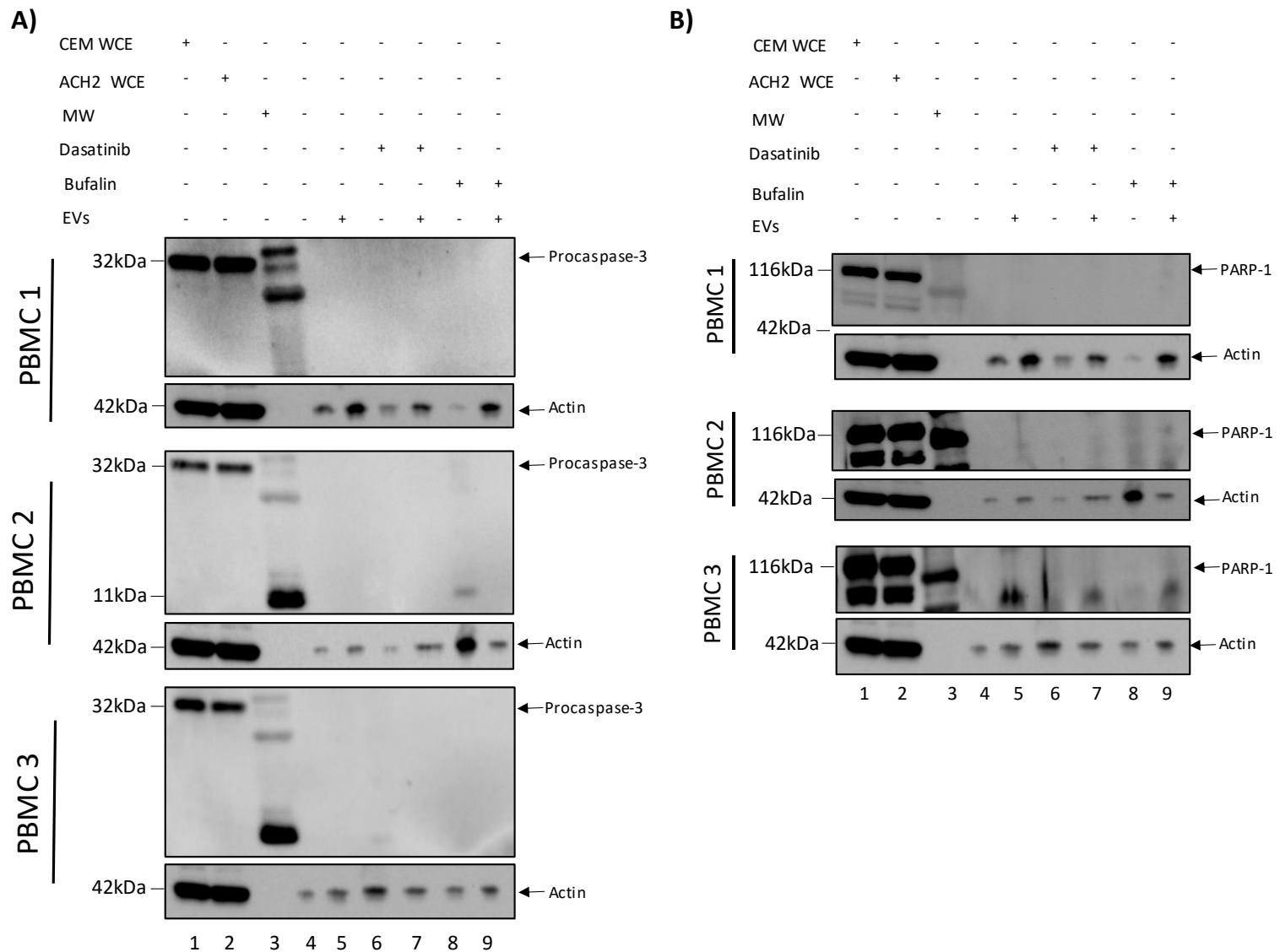
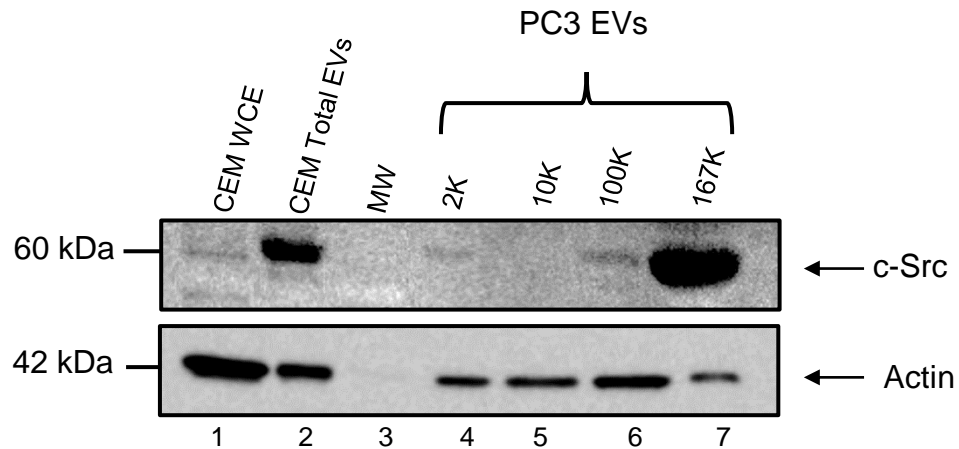


**Figure S1: EV characterization using ZetaView.** EVs were isolated from CEM cells and PBMCs via a 90-minute ultracentrifugation at 100,000 X g. Characterization of EVs including concentration (A), peak size (B), and average size (C) was performed using ZetaView NTA and analyzed with Microsoft Excel in three technical replicates for each sample.





**Figure S3: c-Src is present in extracellular vesicles (EVs) derived from different cell lines and EV populations.** 2K, 10K, 100K, and 167K EV populations were isolated from PC3 cells via ultracentrifugation and Western blotted for c-Src. CEM whole cell extracts (WCEs) and CEM total EVs (comprising of 2K, 10K, and 100K EV populations) were used as positive controls, while actin served as a loading control.