

Correction

Correction: Wuttichaikitcharoen, P. and Babel, M.S. Principal Component and Multiple Regression Analyses for the Estimation of Suspended Sediment Yield in Ungauged Basins of Northern Thailand. *Water* 2014, 6, 2412–2435

Piyawat Wuttichaikitcharoen * and Mukand Singh Babel

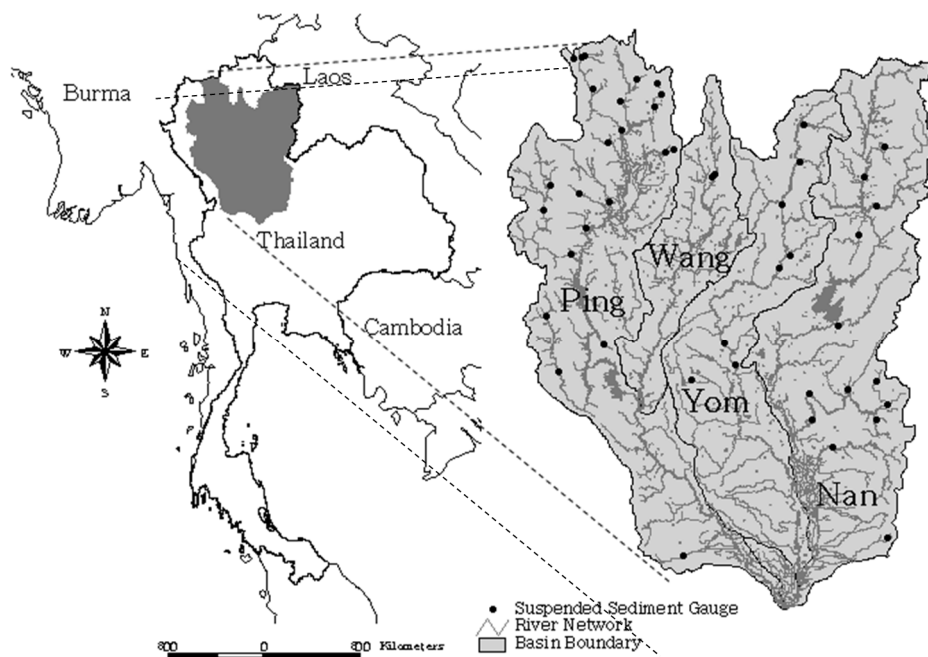
Water Engineering and Management Program, School of Engineering and Technology,
Asian Institute of Technology, P.O. Box 4, Klong Luang, Pathumthani 12120, Thailand;
E-Mail: msbabel@ait.asia

* Author to whom correspondence should be addressed; E-Mail: piyawat@rmutl.ac.th;
Tel.: +66-818-822-763; Fax: +66-25-246-425.

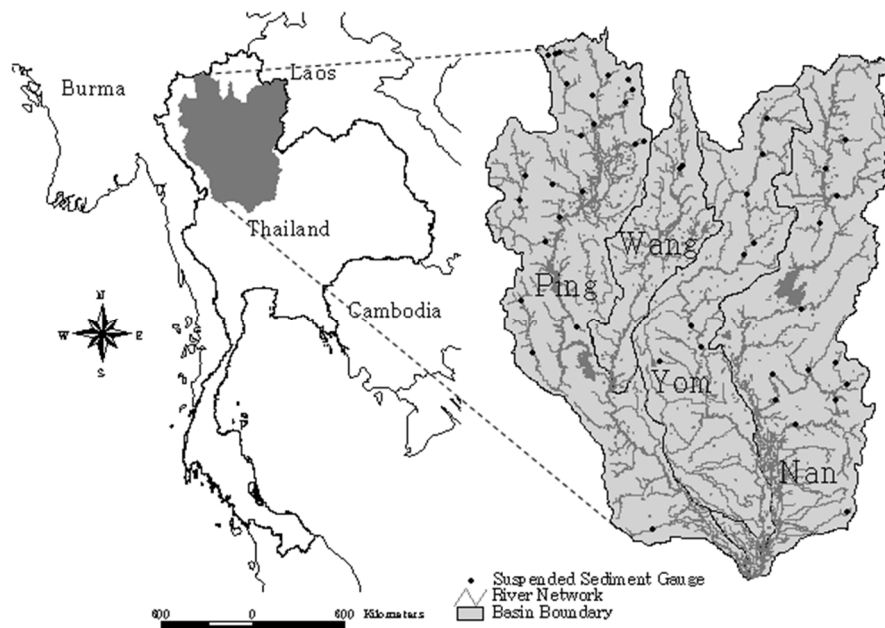
Received: 23 September 2014 / Accepted: 24 September 2014 / Published: 25 September 2014

The authors wish to make the following correction to their paper [1]. Due to an error, there are two repeated dotted lines in Figure 1. The former Figure 1 (labelled here as Previous Figure 1) should be replaced by a new version (labeled here as New Figure 1):

Previous Figure 1. The study area showing the locations of suspended sediment gauging stations.



New Figure 1. The study area showing the locations of suspended sediment gauging stations.



The authors would like to apologize for any inconvenience caused to the readers by this change.

Reference

1. Wuttichaikitcharoen, P.; Babel, M.S. Principal Component and Multiple Regression Analyses for the Estimation of Suspended Sediment Yield in Ungauged Basins of Northern Thailand. *Water* **2014**, *6*, 2412–2435.

© 2014 by the authors; licensee MDPI, Basel, Switzerland. This article is an open access article distributed under the terms and conditions of the Creative Commons Attribution license (<http://creativecommons.org/licenses/by/3.0/>).