

Article

Effect of Primary Variables on A Confined Plunging Liquid Jet Reactor

Bader S. Al-Anzi ^{1,2,*}

Supplementary Information

Figure S1 is an actual impression that shows the role of the mesh installed inside the downcomer. It is evident that a dense group of fine bubbles ejected at the bottom of the downcomer. This increased the net entrainment rate and hence the performance of the system as an aerator.

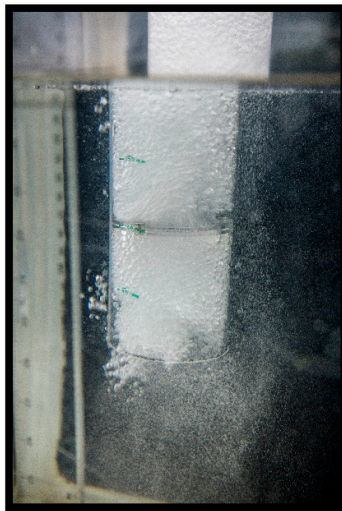


Figure S1. Image shows very fine bubbles leaving the downcomer due to mesh effect.