

Supplementary Materials for:

## How different are manometric, gravimetric and automated volumetric BMP results?

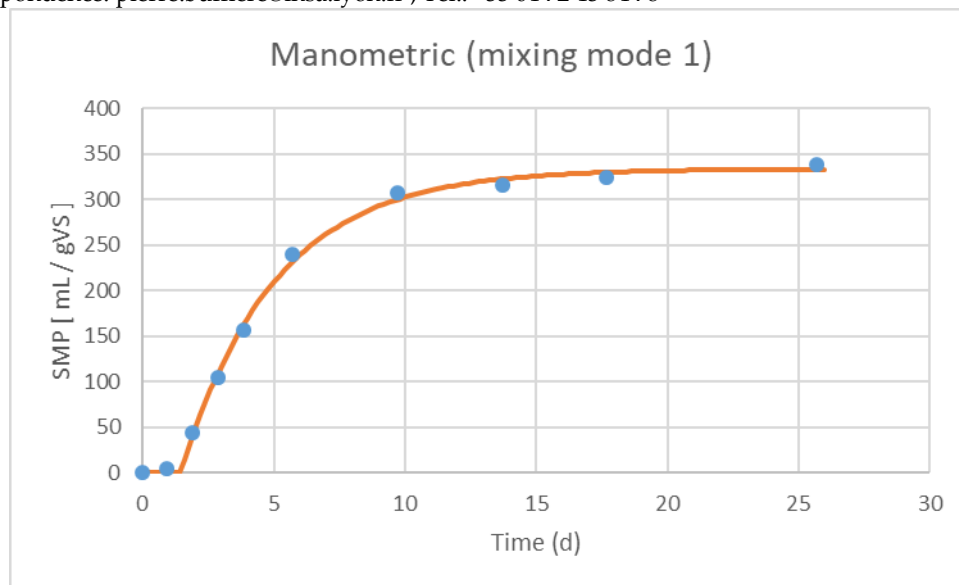
Corrado Amodeo<sup>1</sup>, Sasha D. Hafner<sup>2</sup>, Ruben Teixeira Franco<sup>3</sup>, Hassen Benbelkacem<sup>1</sup>, Paul Moretti<sup>1</sup>, Rémy Bayard<sup>1</sup> and Pierre Buffière<sup>1,\*</sup>

<sup>1</sup> Université de Lyon, INSA-Lyon, DEEP Laboratory – Wastes Water Environment Pollution, EA 7429, 9 Rue de la physique, F-69621 Villeurbanne Cedex, France; pierre.buffiere@insa.lyon.fr (P.B.)

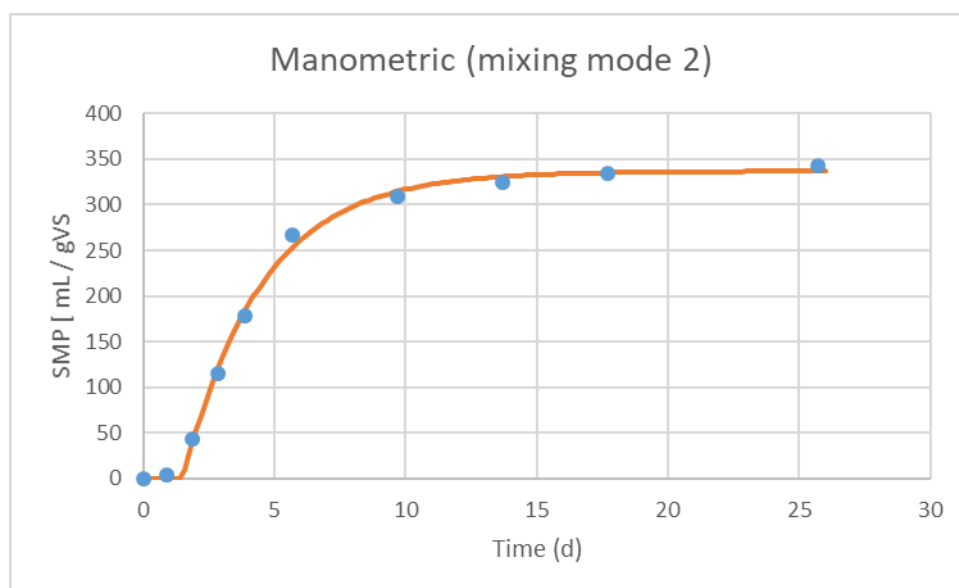
<sup>2</sup> Hafner Consulting LLC, Reston Virginia 20191 USA; sasha@hafnerconsulting.com

<sup>3</sup> Arkolia Energies, 16 Rue des Vergers, F34130 Mudaison, France ; rteixeirafranco@arkolia-energies.com

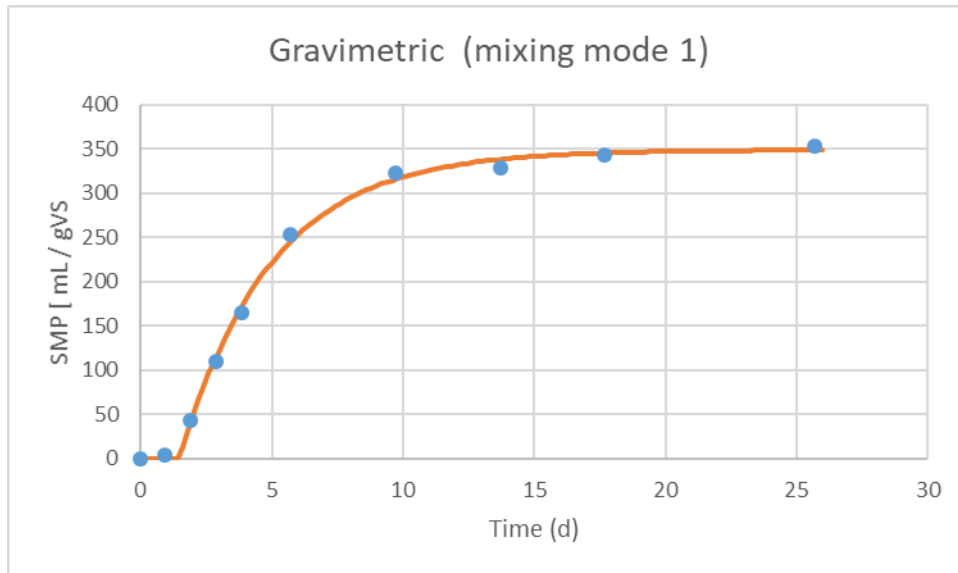
\* Correspondence: pierre.buffiere@insa.lyon.fr ; Tel.: +33 04 72 43 84 78



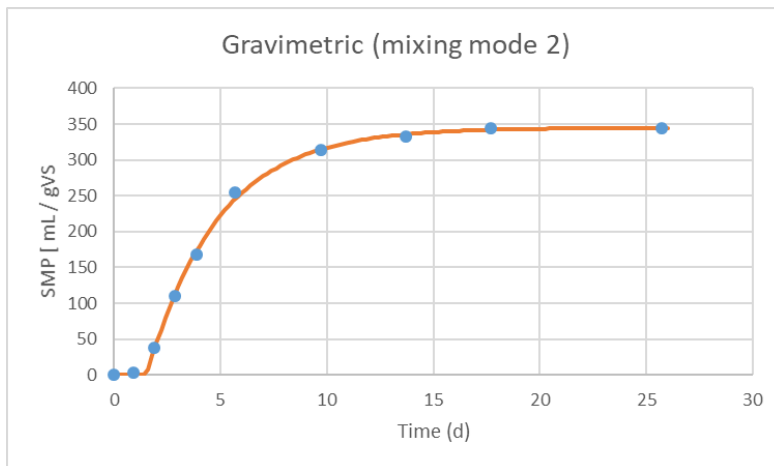
**Figure S1.** Model calibration example for specific methane production of manometric method (mixing mode 1) along test duration. Lines illustrate the BMP first order model calibrated on real measures.



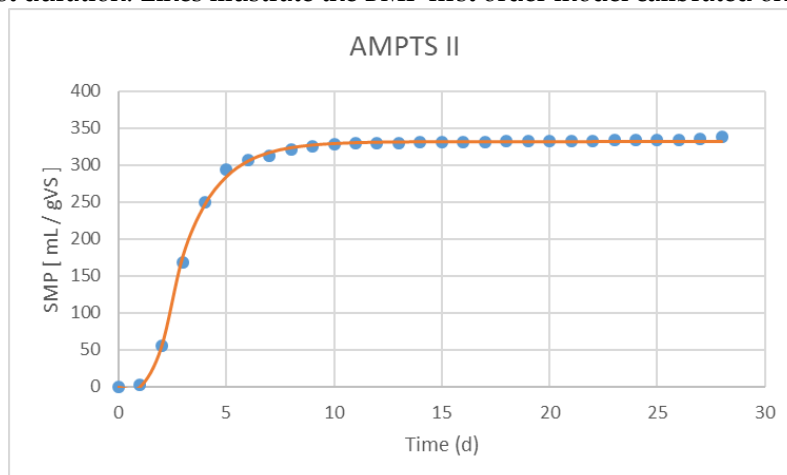
**Figure S2.** Model calibration example for specific methane production of manometric method (mixing mode 2) along test duration. Lines illustrate the BMP first order model calibrated on real measures.



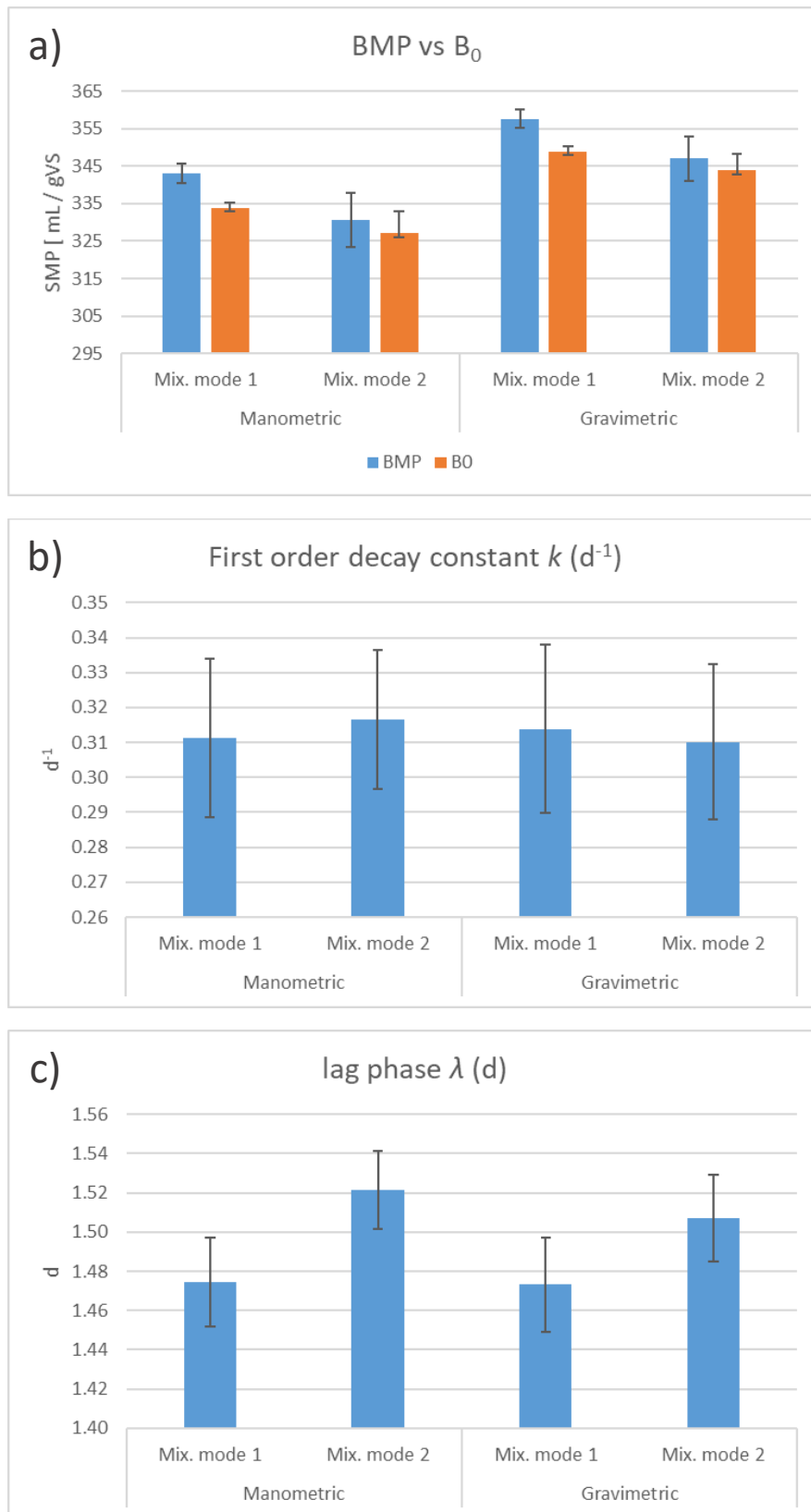
**Figure S3.** Model calibration example for specific methane production of gravimetric method (mixing mode 1) along test duration. Lines illustrate the BMP first order model calibrated on real measures.



**Figure S4.** Model calibration example for specific methane production of gravimetric method (mixing mode 2) along test duration. Lines illustrate the BMP first order model calibrated on real measures.



**Figure S5.** Model calibration for specific methane production of AMPTS II. Lines illustrate the BMP first order model calibrated on real measures.



**Figure S6.** Model comparison. (a) BMP values and B<sub>0</sub> for manometric and gravimetric method, mixing mode 1 and mixing mode 2; (b)  $k$  values for manometric and gravimetric method, mixing mode 1 and mixing mode 2; (c)  $\lambda$  values for manometric and gravimetric method, mixing mode 1 and mixing mode 2.