

Contributing to sustainability of a health research field and community – examples from the SNF NRP 74 “Smarter Health Care”

Fourth Sustainability Forum - UN Sustainability & Health SDG 3

Basel, June 3 2019

Milo Puhan, prof. epidemiology & public health
president steering committee NRP 74

Health services research studies how to...





3 goals of NRP 74, all targeted towards sustainability

Research

Provide insight into healthcare structure and utilisation in Switzerland, particular focus on patients with chronic conditions

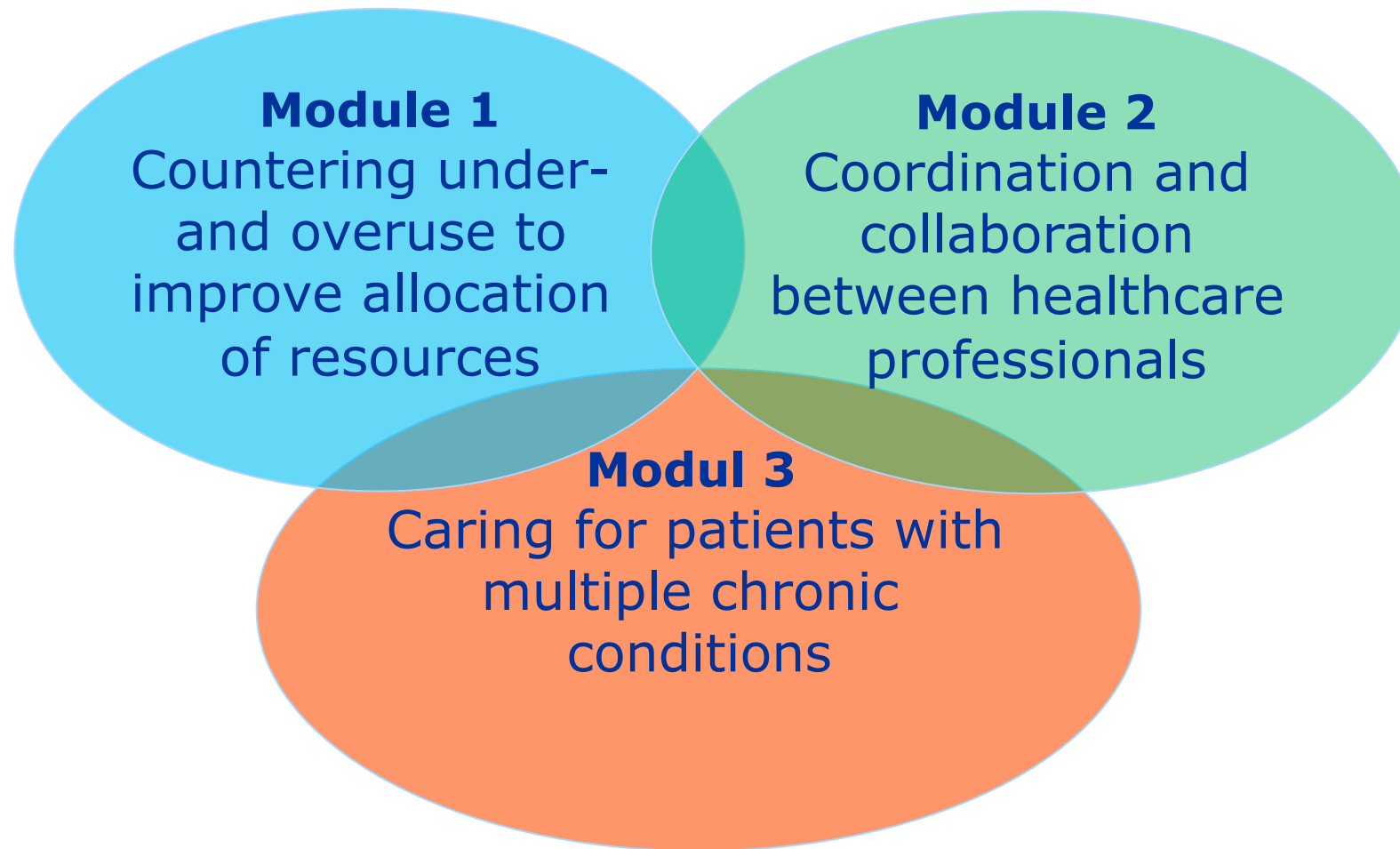
Knowledge transfer

Foster exchange between researchers, stakeholders and the public

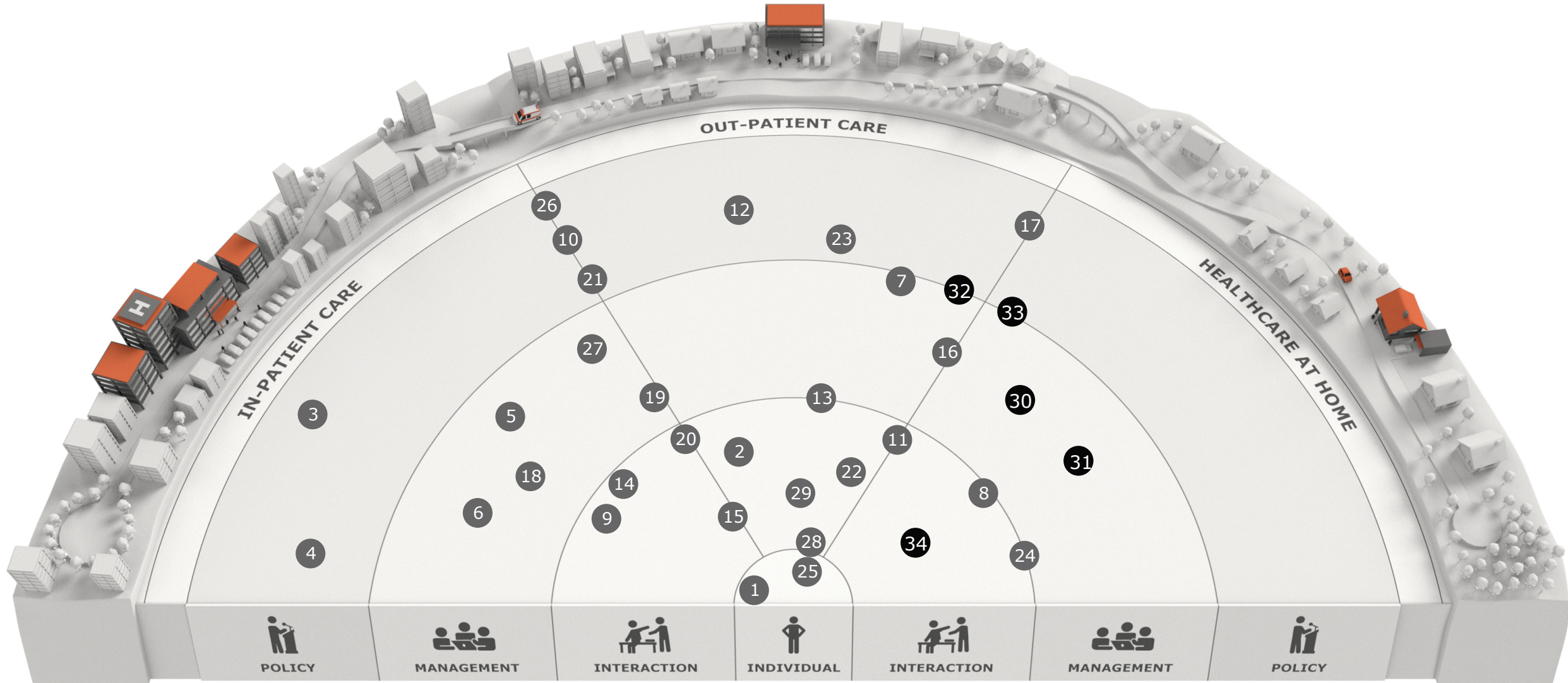
Research community

Create a strong community conducting world-leading, excellent research

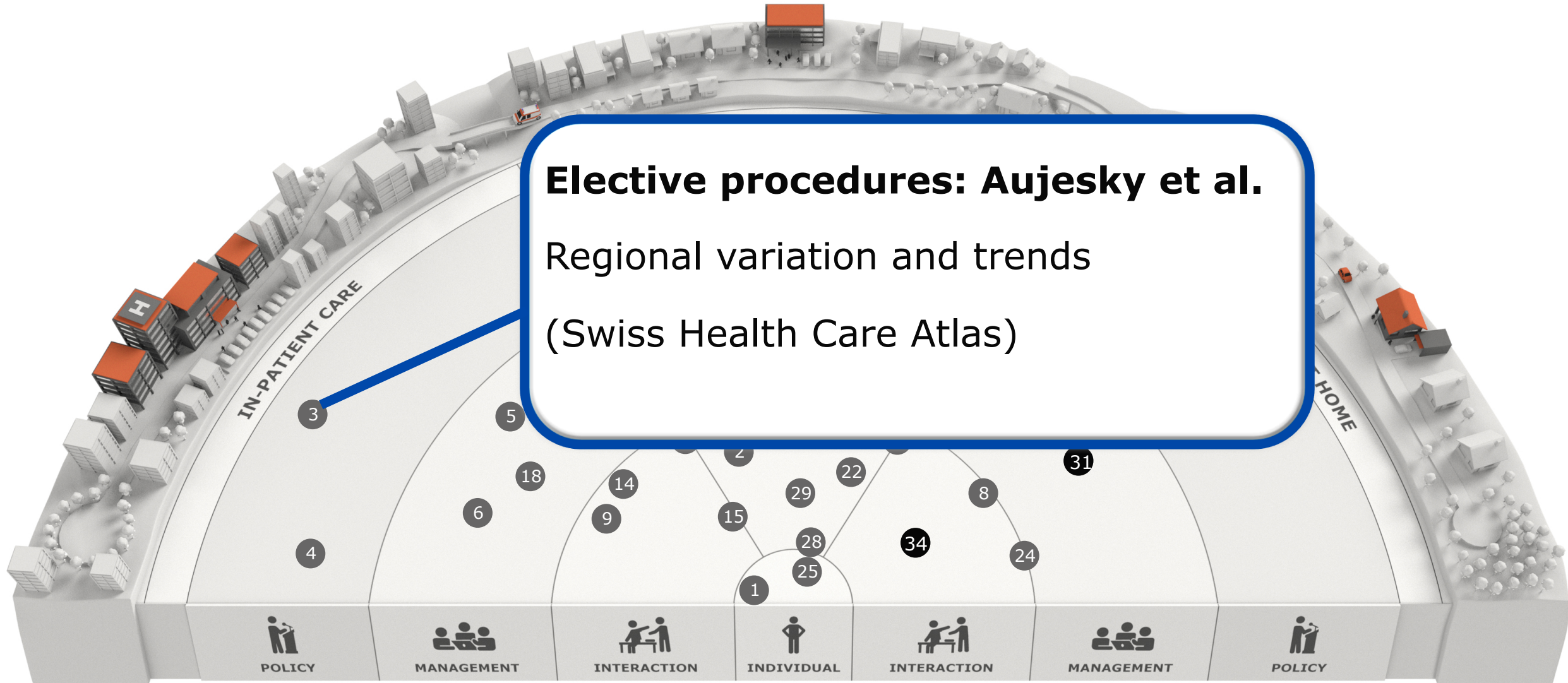
Research areas of NRP 74



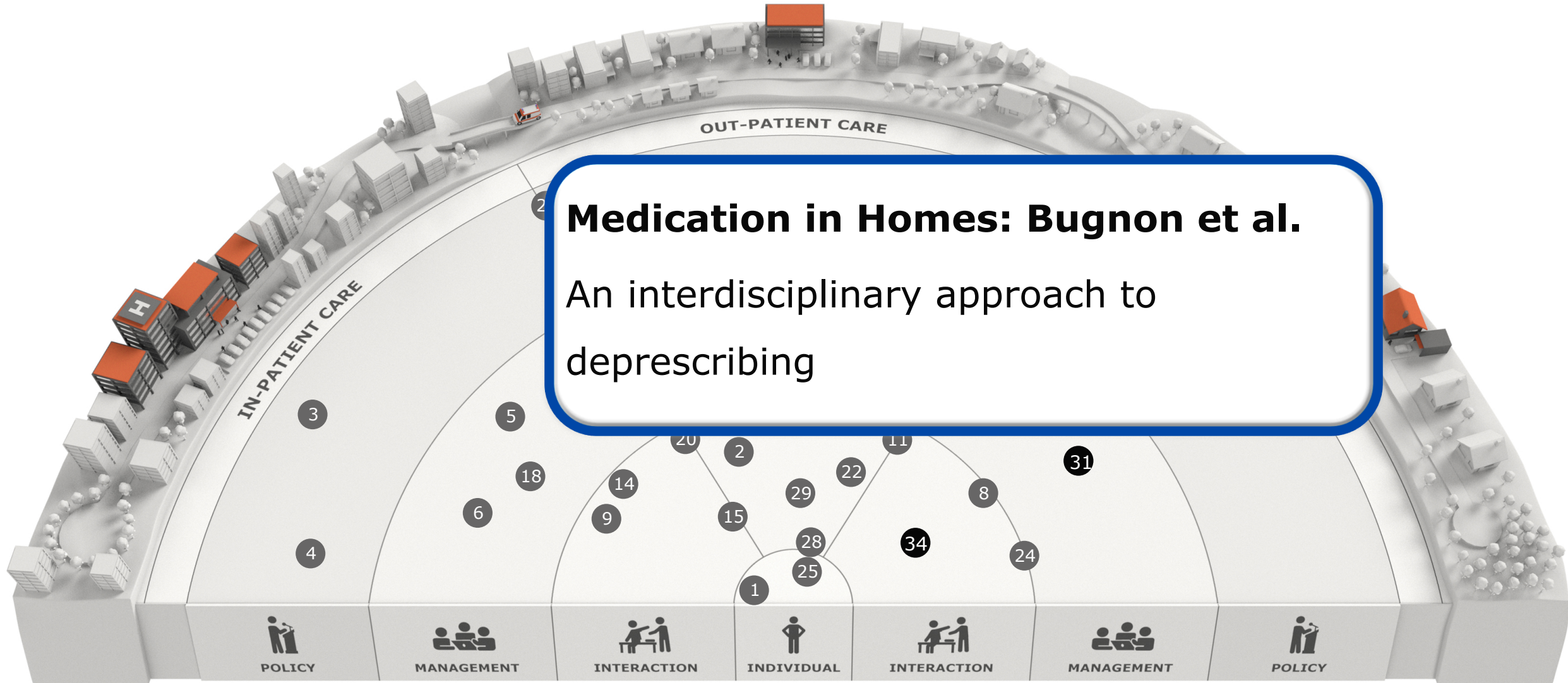
Funded projects according to health care setting



From regional variation in health care delivery



and polypharmacy in nursing homes

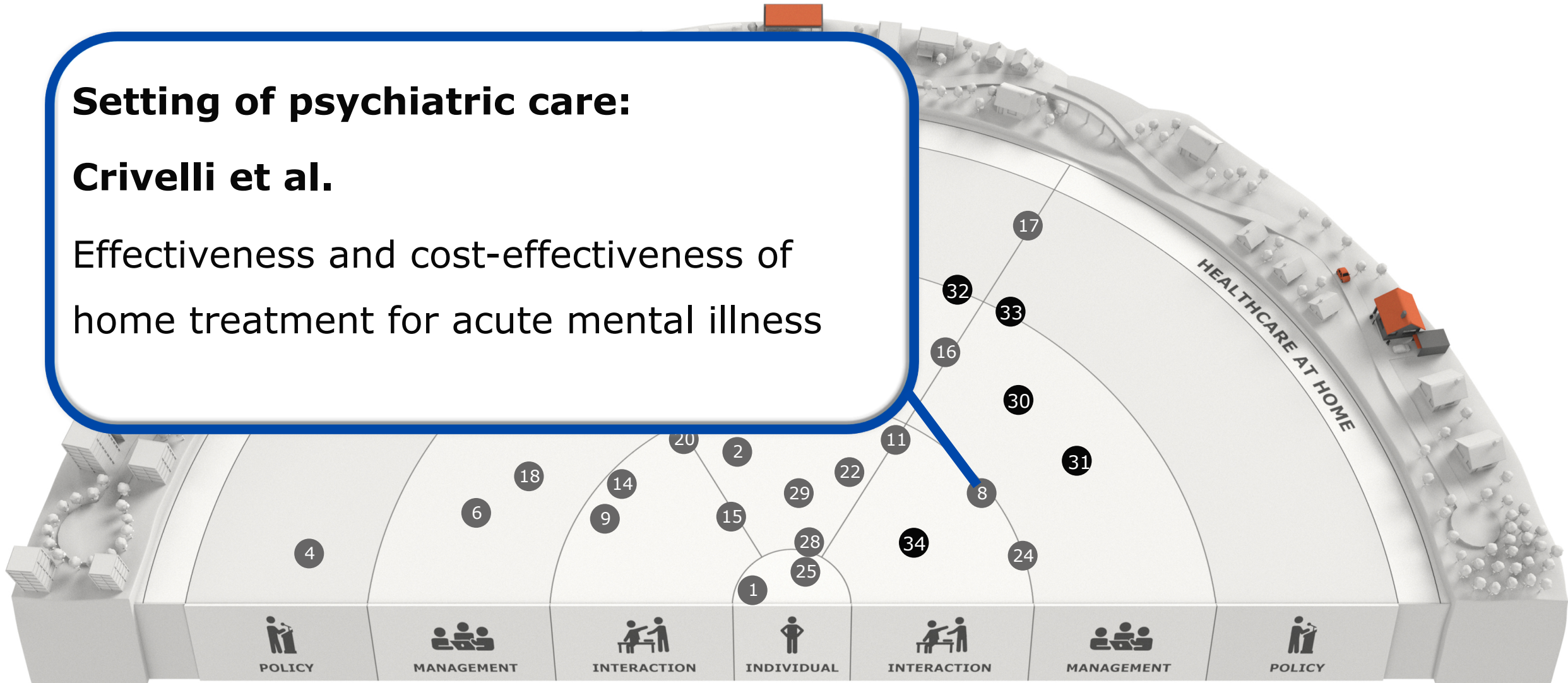


to home treatment

Setting of psychiatric care:

Crivelli et al.

Effectiveness and cost-effectiveness of
home treatment for acute mental illness

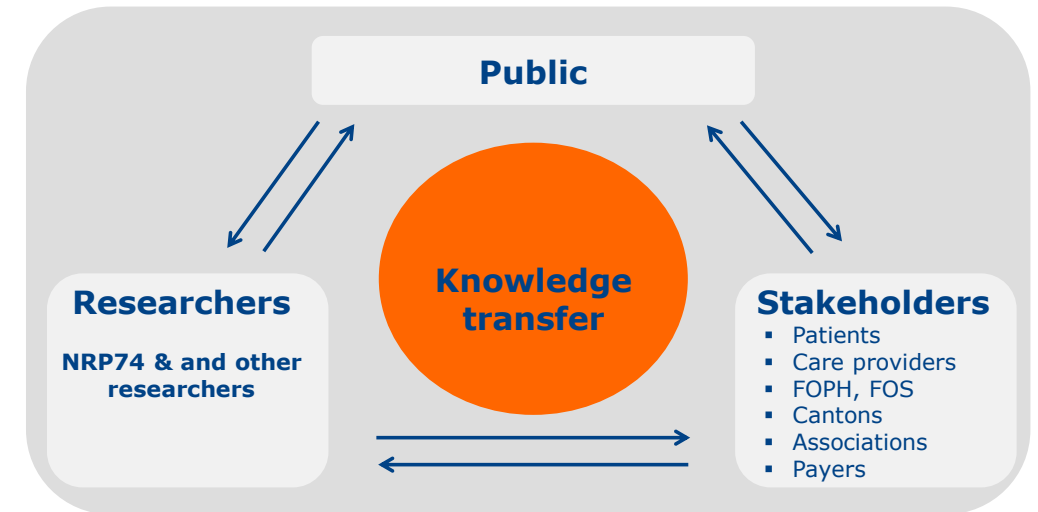


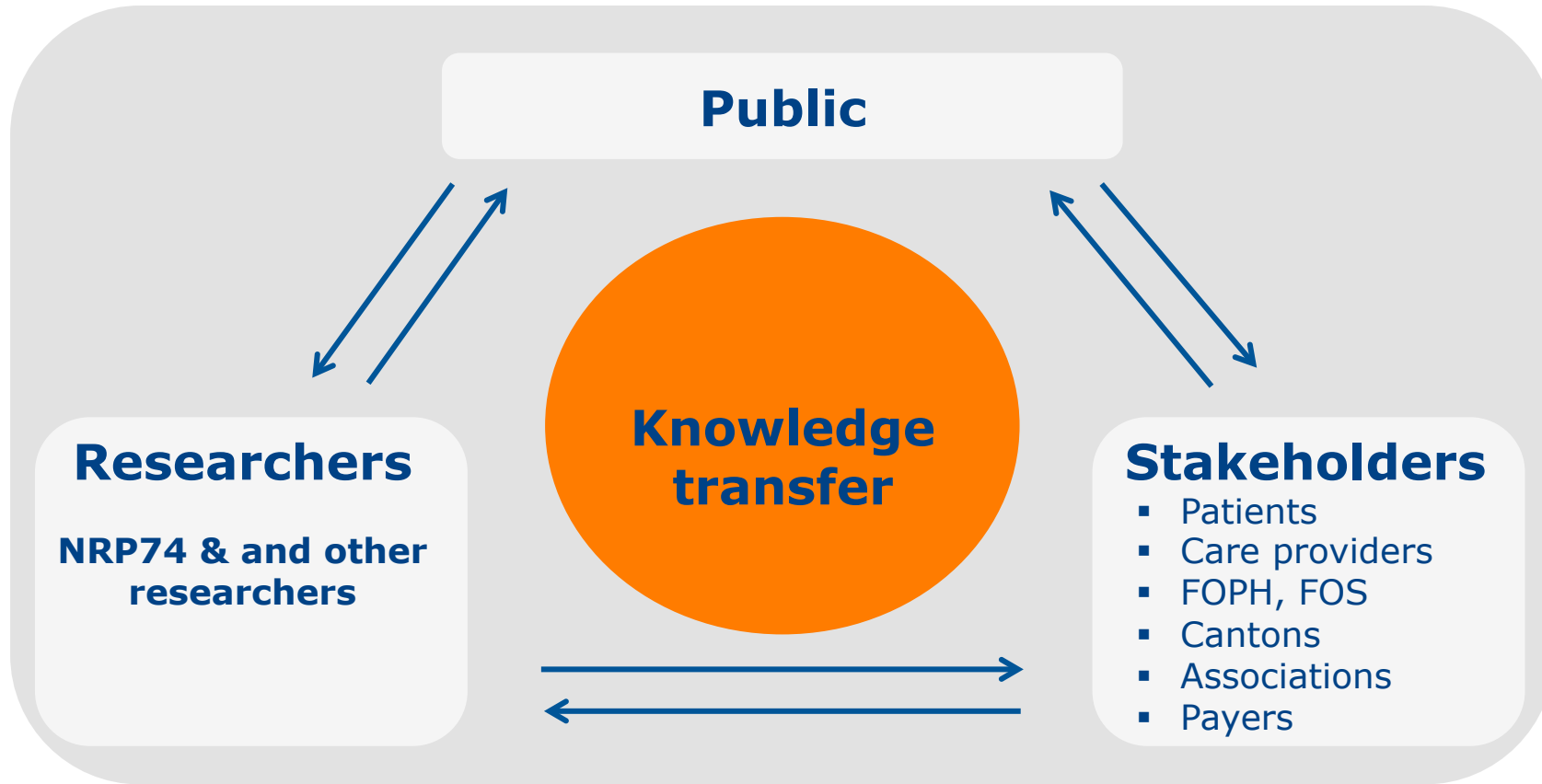
Foster exchange between researchers, stakeholders and the public

Research

Knowledge transfer

Research community





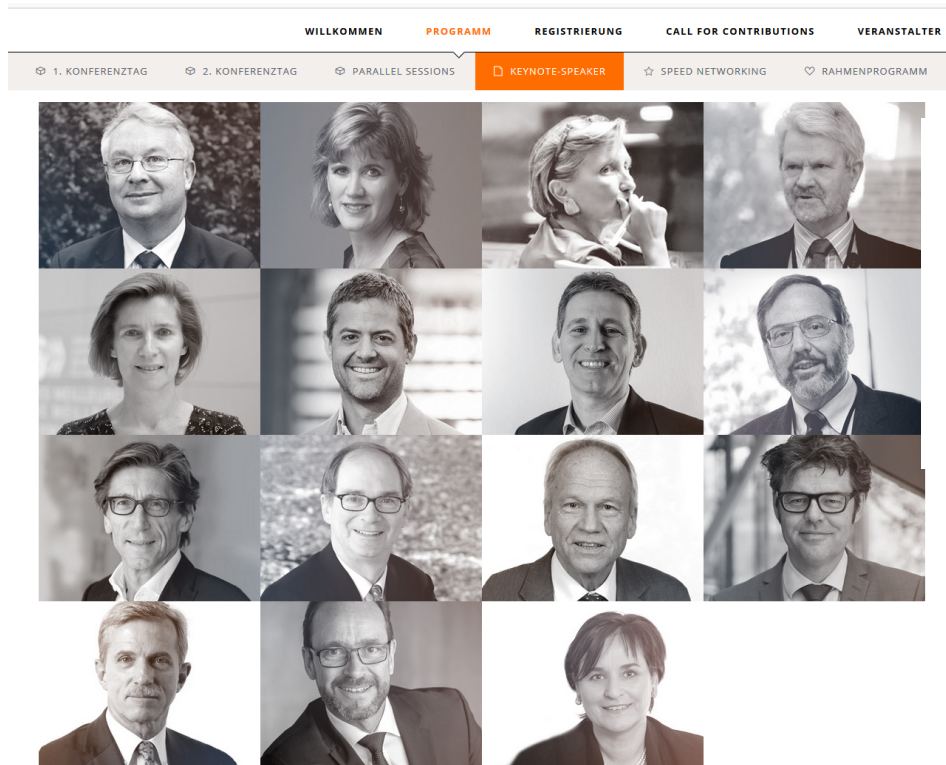
Key principles

Open-minded

Mutual learning

Focus on needs and solutions

Unique opportunities to connect science and policy



Who cares?

Wennberg International Collaborative Spring Policy Meeting
April 12-13, 2018, Zurich, Switzerland

<https://www.wennberg-zurich.org/welcome.html>

Strengthening the research community and promoting international excellence

Research

Knowledge transfer

Research community



**Emerging Health
Care Leaders**

Special program for young scientists

Emerging Health Care Leaders

To create a strong community of health services researchers

To train and empower early career scientists

To facilitate collaborations

Training individuals – building a research community

**Training of
individuals**



**Building a
research
community**

**“If you want to go quickly, go alone.
If you want to go far, go together.”**

— AFRICAN PROVERB



Rolf Heusser

rolf.heusser-gretler@uzh.ch



Guiding Principles

Focused on early career scientists

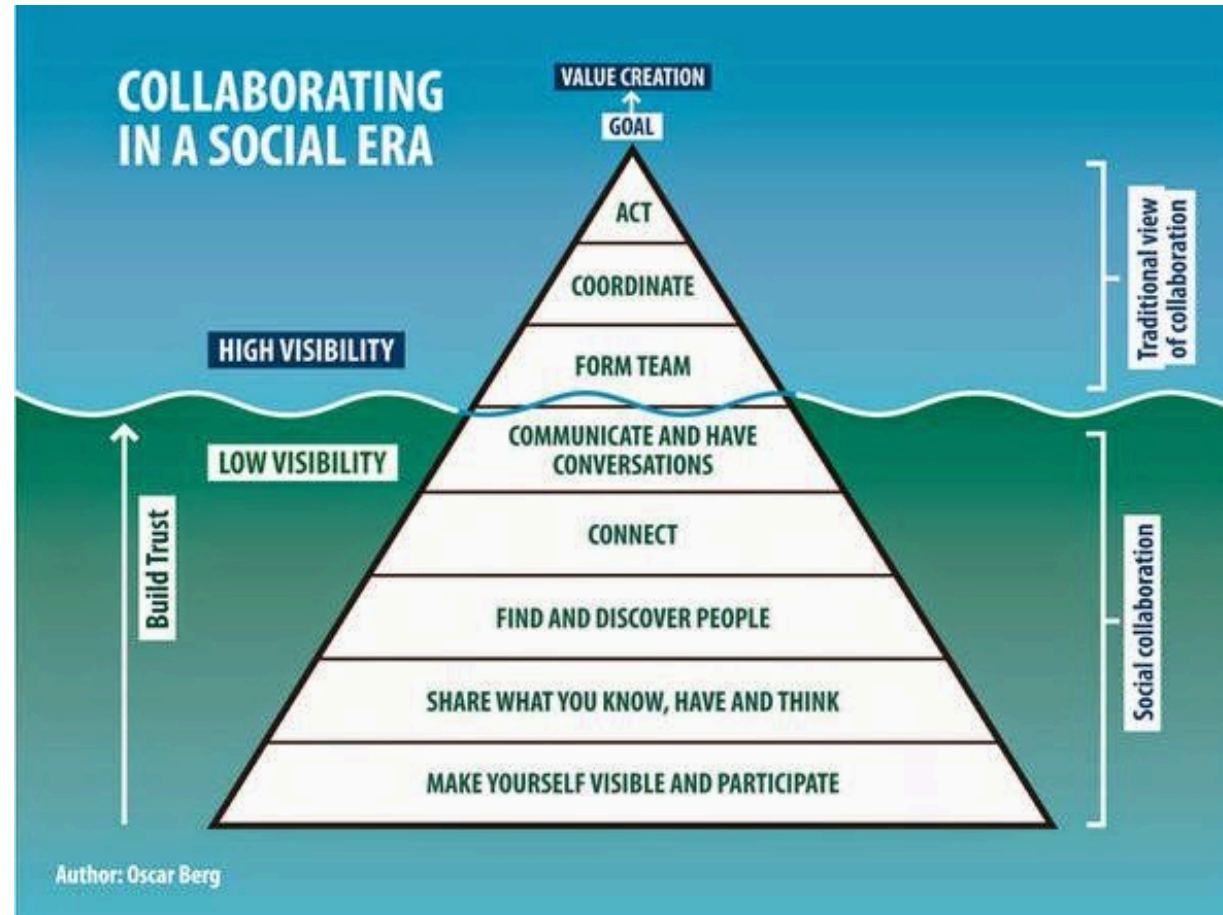
Needs-driven (scholars, PIs, external stakeholders)

Service-oriented, subsidiarity principle

Inclusive approach

Innovative Spirit

Gradually building the research community



<http://www.oscarberg.net/blog//2014/11/the-collaboration-pyramid-revisited.html>

The EHCL program in 2018

Training of individuals

- 7 professional skill trainings
- Individual goal-oriented coaching for scholars



Building a research community

- 3 "Spark Sessions" national and international experts
- 6 community building activities
- "Expert Visitor Grant Programme" (3 events)

Evaluation Summaries 2018

Enjoyment



Personal and professional relevance



Engagement of speakers and moderators



Overall event environment





A quote from one of the EHCL scholars

"The EHCL community is a close community where most of the scholars know each other and learn from each other. Not only on content and methods but also discuss career possibilities and personal issues. Most of the scholars have different professional backgrounds and that makes it interesting."

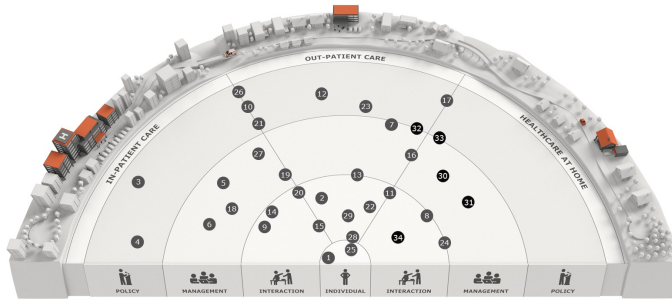


A quote from one of the primary investigators

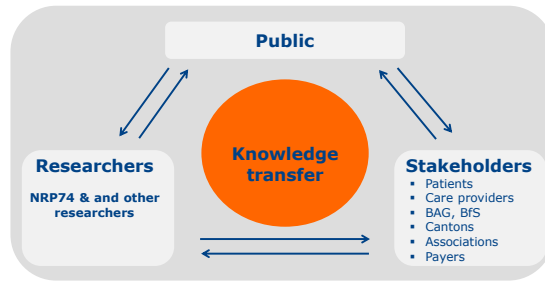
"My student, like many other scholars, has difficulties dividing their time between the projects, the EHCL community, and personal life. There is just not enough time in academia to join all aspects 100%. And they feel guilty about it. It is great that the scholars can discuss this challenge together and 'not feel alone' in this situation."

Strive for sustainability of «Smarter Health Care»

Research



Knowledge transfer



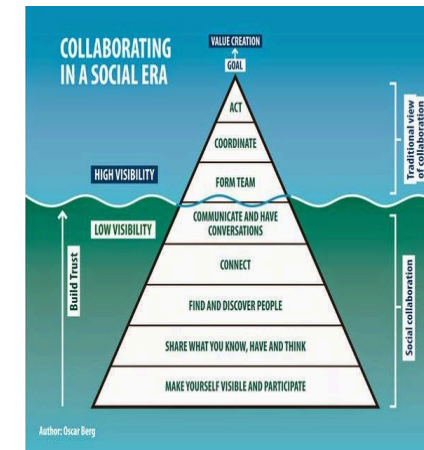
Research community

Training of
individuals



Building a research
community

Professional skills
Career reflection
Selected methods
and subject courses



Common grant
Common paper
Discuss
Build trust
Inform
Get to know